

MAZOUT, Brûleur, FIOUL, Combust, RIELLO, RBL, R.B.L, Baltur , POUR CHAURIDIÈRE DE CHAUFFAGE DOMESTIQUE

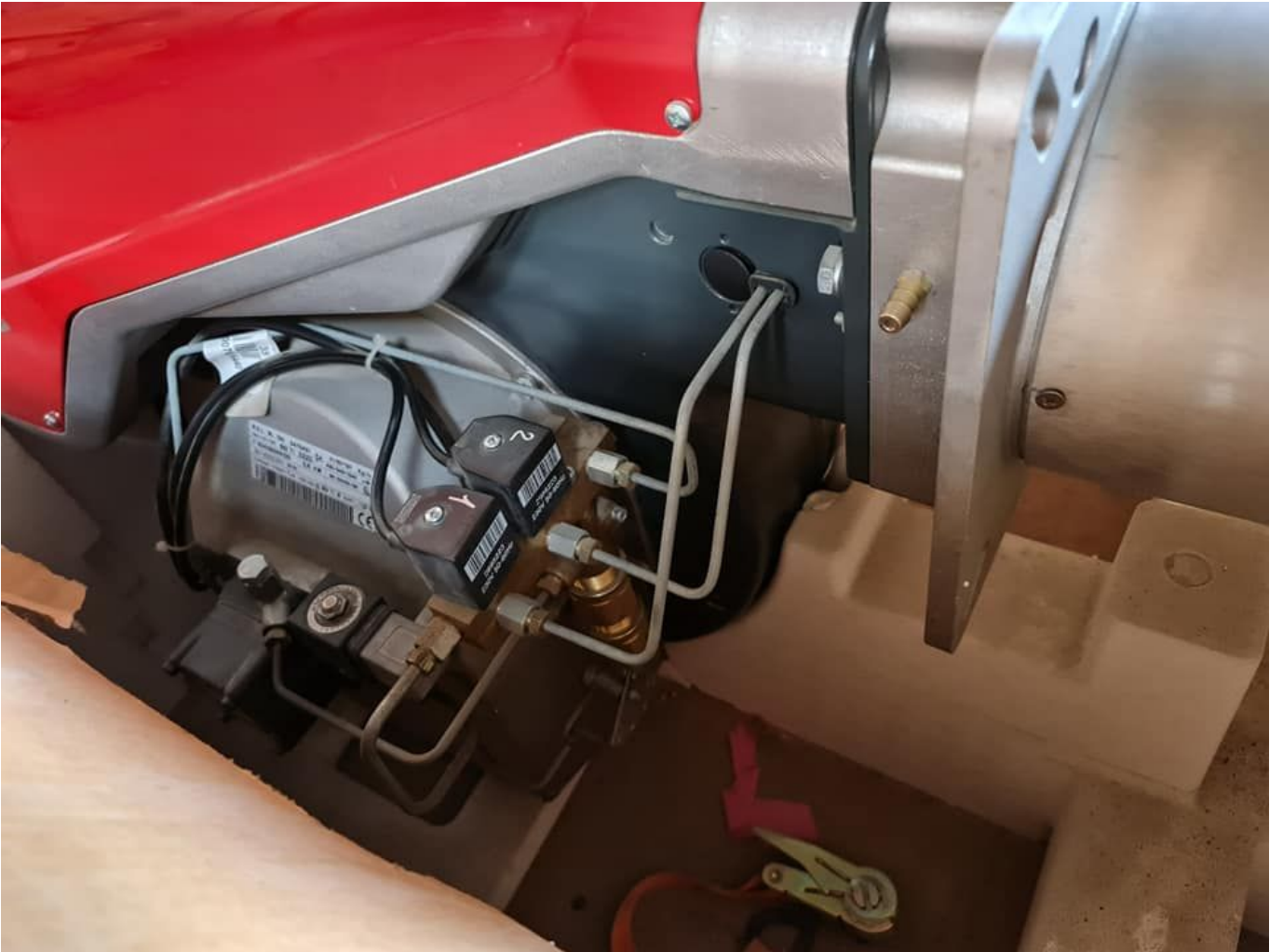
Category: Plomberie,Technologie

written by Lilianne | 29 January 2021

MAZOUT, Brûleur, FIOUL, Combust, RIELLO, RBL, R.B.L, Baltur , POUR CHAURIDIÈRE
DE CHAUFFAGE DOMESTIQUE



Private Picture Copyright : WWW.MBSM.PRO



696440

R.E.L. RL 130 3475431			41/80+130 Kg/n
TIPO/TYP/TYPE	662 T1 DZZO		486/948+1540 kW
N°	02428000129	2,6 kW	BN 5G426/99 
3N~400/230V 50 Hz			
Combust. / Heizöl / Fuel		max.visc @ 20 °C	6 mm ² /s (1,5°E)



Private Picture Copyright : WWW.MBSM.PRO

R.B.L.	RL 190	3092152		64/120+206 Kg/h
TPO/TYP/TYPE	2152D	DZZO		759/1423+2443 KV
N°	02478000225	5,5 kW		
3N ~ 400/230V		50 Hz		
Combust./Heizöl/Fuel max.visc @ 20°C 6 mm \varnothing (1,5"E)				
<small>RELO S.p.A. I-37045 Legnago (VR)</small>				









Private Picture Copyright : WWW.MBSM.PRO

baltur

Cento (FE)
s.r.l.

BGN 300P

N. Matr. 2240049 Anno 1995
Serial Nr. 2240049 Year 1995
Combustibile Metano
Fuel Natural gas
Bistadio Basse pressione
Two stage Low pressure
Gas Categoria I
Potenza termica non
Rated input
7.5 kW 3N 50 Hz 220/380 V

1	2	3	4	5	6
collegato in linea					

N02488000983	TIPO/TYP TYPE	2116 0	220 V ~ 50/60 Hz	0.9 kW
		80 ÷ 450 Kg/h	990 ÷ 5200	kW
Combust. Heizöl / Fuel	max. visc. @	50°C	500 mm ² /s (69 °E)	0224
TI 10 PR 50°2116				R.B.L.
		<input type="checkbox"/> DUE STADI PROGRESSIVI GLEITEND ZWEISTUFIG		
		<input type="checkbox"/> MODULANTE MODULIEREND		





