

Compressor, NL7.3FT, SECOP, 105G6726, DANFOSS, 6726, 105G, 105 G 6726, 105G 6726, 1/5 HP, 180W, LBP, Zanussi, Kiriazi Electric Company, TGV 335L, NO FROST, TSV 320L, FC 83L , R134A, 125G, 220-240V 50Hz, CSIR

Category: compressor

written by Lilianne | 16 February 2021

R134a is a low pressure refrigerant, very efficient for high temperature applications.

This makes it ideal in air conditioning applications that may leak refrigerant like car air conditioning.

Now it is being phased out because of its high global warming potential and replaced by R134

R404a is a high pressure refrigerant ideal for applications in low and medium temperature.

You want low pressure refrigerants in household applications like refrigerators that may be inside kitchens with (possible) high ambient temperature, so you make sure nothing will blow up. For the same reason you want R134a in your car air conditioning.

R404a instead has pressures slightly above atmospheric in low temperature applications where R134a would have negative pressures and its heat transmission coefficients would be much lower.

Type de gaz	App	HP	Watt	Modèle	TL
R134A	LBP	1/6	134	TLY5.1FK	
R134A	LBP	1/4	183	TLES7FT.4	

R134A	LBP	1/5	156	NL6FT.2	NL
R134A	LBP	1/5	185	NL7.3FT (RSIR)	
R134A	LBP	+ 1/4	219	NL9FT.2 (RSIR)	
R134A	LBP	1/4	185	NL7.3FT (CSIR)	
R134A	LBP	+ 1/4	219	NL9FT.2 (CSIR)	
R134A	LBP	1/3	284	NL10FT	
R134A	MBP	1/3	621	NL11MF	
R404A	LBP	1/3	433	NL7CLX	
R404A	LBP	1/3	471	NL8.4CLX	
R134A	LBP	1/4	187	NLY6F	
R134A	LBP	+ 4 / (1)	213	NLY7F	
R134A	LBP	1/3	237	NLY9FK	
R600A	LBP	+ 1/4	227	NLE13KTK.2	
R600A	LBP	1/3	253	NLE15KTK.2	
R600A	LBP	+ 1/4	225	NLX13KK.3	
R600A	LBP	1/3	254	NLX15KK.3	

R134A	LBP / MBP / 1/3 HBP	264	SC12G	
R134A	LBP / MBP / 1/2 HBP	392	SC18G	
R134A	LBP / MBP / 3/4 HBP	456	SC21G	SC
R134A	MBP 3/4	1073	SC21MFX	
R134A	LBP 3/4	567	SC21FTX	
R404A	LBP 1	1033	ST21CL	
R404A	LBP 1	986	SC18CLX.2	
R404A	MBP 1/2	359/650	SC15MLX	
R404A	MBP 7/8	762/1584	SC18MLX	

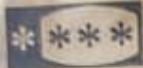
# KIRIAZI

ELECTRIC  
COMPANY



®

CE



Product	No Frost Refrigerator	Class	T
Model	E 335N/3	Current / Amp.	1.1/~
Rated Voltage	220-240V/50HZ	Refrigerant	R 134a 125g
Rated input of lamp	1 x 25 W	Total Gross Volume	335 L
Ins : Basic	Type II IPX4	Total Storge Volume	320 L
Freezing Capacity	4 kg/24hr	Freezer Capacity	83L
ES 6000 / 2008		Tow Door Ref.	
ES 3793 / 2006			
Serial Number		Made in Egypt	



REDMI NOTE 8  
AI QUAD CAMERA



REDMI NOTE 8  
AI QUAD CAMERA





Private Picture Copyright : [WWW.MBSM.PRO](http://WWW.MBSM.PRO)

Mbsm\_dot\_pro\_private\_PDF\_NL7.3FTTélécharger

Mbsm\_dot\_pro\_private\_PDF\_nl73ft\_105g6731\_r134a\_220v\_50hz\_11-2011\_desd406c102Télécharger

Refrig	Applic		oil cooling		Evaporating temperature [°C]											Evaporating tem		
					-35	-30	-25	-20	-15	-10	-5	0	5	10	15	-25	-10	
R134a	LBP	PL50F	101G0220		1/20	14	26	40	56	74	95						60	86
		TL53FT	102G4324		1/16	21	34	50	69	92	120						62	93
		TL54FT	102G4424		1/10	27	43	63	88	117	152						88	123
		TL55FT	102G4524		1/8+	48	71	98	131	170	216						114	165
		TL55.7FT.3	102G4615		1/6	66	90	120	156	200	253						120	170
		TL56.5FT.3	102G4703		1/5			136									139	
		NL6FT	105G6628		1/6	60	84	115	152	198	253						123	184
		NL6.1FT	105G6620		1/6	60	84	115	152	198	253						123	184
		NL7FT	105G6728	105G6738	1/5	71	100	136	181	235	299						145	220
		NL7.3FT	105G6726		1/5	71	100	136	181	235	299						145	220
		NL8.4FT	105G6865		1/4	87	120	162	213	275	350						169	252
		NL9FT	105G6828	105G6838	1/4	87	120	162	213	275	350						169	252
		NL10FT	105G6829	105G6839	1/3	113	158	213	281	361	455						215	316
		NLE7.3FT	105G6710		1/4	92	118	154	201	258	325						148	221
		SC12FT	104G8205	104G8215	1/3	103	163	233	314	408	517	645					265	380
		SC15FT	104G8505		1/2	126	197	280	376	489	620	772					311	451
		SC18FTX	104G8805		5/8	144	229	325	437	567	719	896					365	517
		SC21FTX 50Hz	104G8105		3/4	192	296	415	553	713	901	1119					428	613
		SC21FTX 60Hz	104G8106		3/4	240	345	470	620	800	1012	1262					475	707
	LBP/MBP/HBP	TL2.5G	102G4251		1/12	11	23	36	51	69	90	116	145	179	219	264	60	84
		TL3G	102G4350		1/12		25	41	59	81	106	136	170	211	258	312	66	96
		TL4G	102G4452		1/8		41	58	80	107	140	180	226	280	342	413	83	118
		TL5G	102G4550		1/6		56	79	107	139	178	224	278	341	414	497	100	149
		FR6G	103G6660		1/5		48	83	124	171	226	290	365	452	552		109	172
		FR7.5G	103G6680	103G6690	1/5		62	99	142	193	254	325	408	505	618		126	194
		FR8.5G	103G6780	103G6790	1/4		85	123	171	228	298	381	478	592	722		151	231
		FR10G	103G6880	103G6890	1/4		92	136	188	250	324	412	516	638	779		179	265
		FR11G	103G6980		1/3		115	170	233	307	395	501	628	780			202	317
		TL6.5MF	102G4781		1/4			174	219	279	349	425	520				202	
		NL6.1MF	105G6660		1/5			141	189	245	312	390	482	588	709		187	
		NL7.3MF	105G6772		1/4			179	236	304	385	480	591	719	867		227	
		NL8.4MF	105G6879		1/4+			213	277	353	445	553	679	825	994		261	
		NL10MF	105G6885		1/3			266	346	441	554	687	843	1023	1231		323	
		NLE10MF	105G6888		1/3	88	137	194	262	343	440	554	688	845		198	308	
		NL11MF	105G6151		3/8			292	380	485	609	756	927	1125	1354		360	
		SC10G	104G8000		5/16	23	60	113	183	268	369	486	618	764	925	1100	181	290
		SC12G	104G8240	104G8250	3/8	65	113	175	252	348	464	603	768	960	1182	1437	227	355
		SC15G	104G8520	104G8530	1/2			164	290	424	568	728	908	1110	1340	1600	233	440
		SC18G	104G8820	104G8830	1/2+			283	394	526	684	870	1087	1337	1624	1950	273	507

model	watt	HP	LBP/MBP	نوع گاز	توضیحات
SC12G	248	1/3	LBP/MBP	134	
SC18G	392	1/2	LBP/MBP	134	
SC21G	456	3/4	LBP/MBP	134	
SC21MFX	1073	3/4	MBP	134	هیپکریک SC21G
SC21FTX	567	3/4	LBP	134	هیپکریک SC21G
SC12CL	629		LBP	404	
SC15CL	782		LBP	404	
SC18CLX.2	986		LBP	404	
TLS5FT(PTC)	134	1/6	LBP	134	
TLES5.7FT(PTC)	163	1/5	LBP	134	
TLES6.5FT(PTC)	183	1/4	LBP	134	سلفن NL7
NL6FT.2(PTC)*	156	1/5	LBP	134	
NL7FT.2(PTC)*	185	1/4	LBP	134	
NL9FT.2(PTC)*	219	1/4+	LBP	134	
NL10FT	284	1/3	LBP	134	هیپکریک SC12G (پارک و ملز)
NL11MF	621	1/3	MBP	134	هیپکریک SC12G (پارک و ملز)
NL7CLX	433		LBP	404	
NL8.4CLX	471		LBP	404	
NL7.3MF	393		MBP	134	
NL8.4MF	455		MBP	134	
NLY6F	187		LBP	134	سلفن NL7 - High efficiency (۷۵٪ راندمان)
NLY7F	213		LBP	134	سلفن NL9 - High efficiency (۷۵٪ راندمان)
NLY9FK	237		LBP	134	High efficiency (۷۵٪ راندمان)
BD50F	72		LBP/MBP	134	
BD350GH	167		LBP/MBP	134	
GS21MLX	2200		MBP	404	
GS26CLX	1430		LBP	404	
GS34CLX	2072		LBP	404	
GS26MLX	2866		MBP	404	
GS34MLX	3726		MBP	404	

(LBP @ -33.3°C ASHRAE) زیر صفر  
(MBP @ -6.7°C ASHRAE) بالای صفر