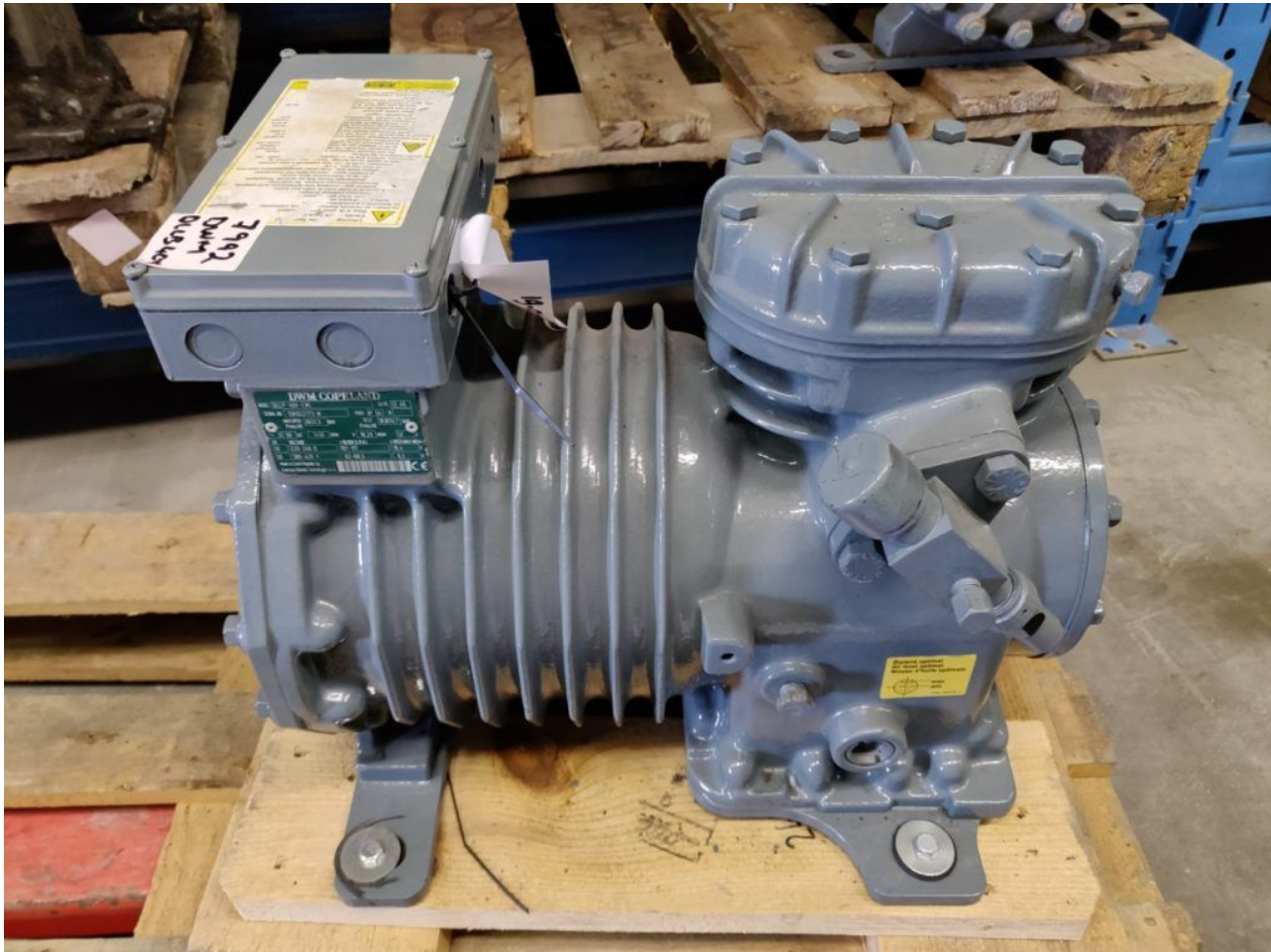


# Mbsm.pro, Compressor, DLLP-40X, DLLP-40X-EWL, DWM, Copeland, Semi-Hermetic Compressor, 4 Hp, R507, 400V /3PH/ 50hz

Category: compressor

written by Lilianne | 18 March 2022



Private Picture Copyright : WWW.MBSM.PRO

## Product Specifications

### Size and Dimensions

|                                  |            |
|----------------------------------|------------|
| <b>Bolt Hole Size</b>            | 295×279 mm |
| <b>Connection Size (Liquid)</b>  | 5/8"       |
| <b>Connection Size (Suction)</b> | 1 1/8"     |
| <b>Width</b>                     | 330 mm     |
| <b>Height</b>                    | 385 mm     |
| <b>Length</b>                    | 470 mm     |
| <b>Weight</b>                    | 93 kg      |

### General Information

**Model Number** DLLP-40X-EWL

## Product Range K, L & S Standard Series

### Technical Information

|                                  |                        |
|----------------------------------|------------------------|
| <b>Compressor Horsepower</b>     | 4 HP                   |
| <b>Optional Capacity Control</b> | % N/A                  |
| <b>Compressor Displacement</b>   | 18.2 m <sup>3</sup> /h |
| <b>Number Of Cylinders</b>       | 2                      |
| <b>Oil Charge</b>                | 2 ltr                  |
| <b>Oil Switch Required</b>       | No                     |
| <b>Phase</b>                     | 3                      |
| <b>VBIS Tag</b>                  | RE-Co-SHC              |

### Power Information

|                                  |        |
|----------------------------------|--------|
| <b>Locked Rotor Current: (A)</b> | 68.5 A |
| <b>Maximum Operating Current</b> | 9.5 A  |
| <b>Power Supply</b>              | 415V   |

## Info de Base.

N° de Modèle.

DLLP-40X-EWL

### Description de Produit

#### Compresseur de réfrigération (DLLP Semi-Hermetic-40X-EWL)

Nsp/DL nouvelle série refroidis par air 1.0 à 5 HP

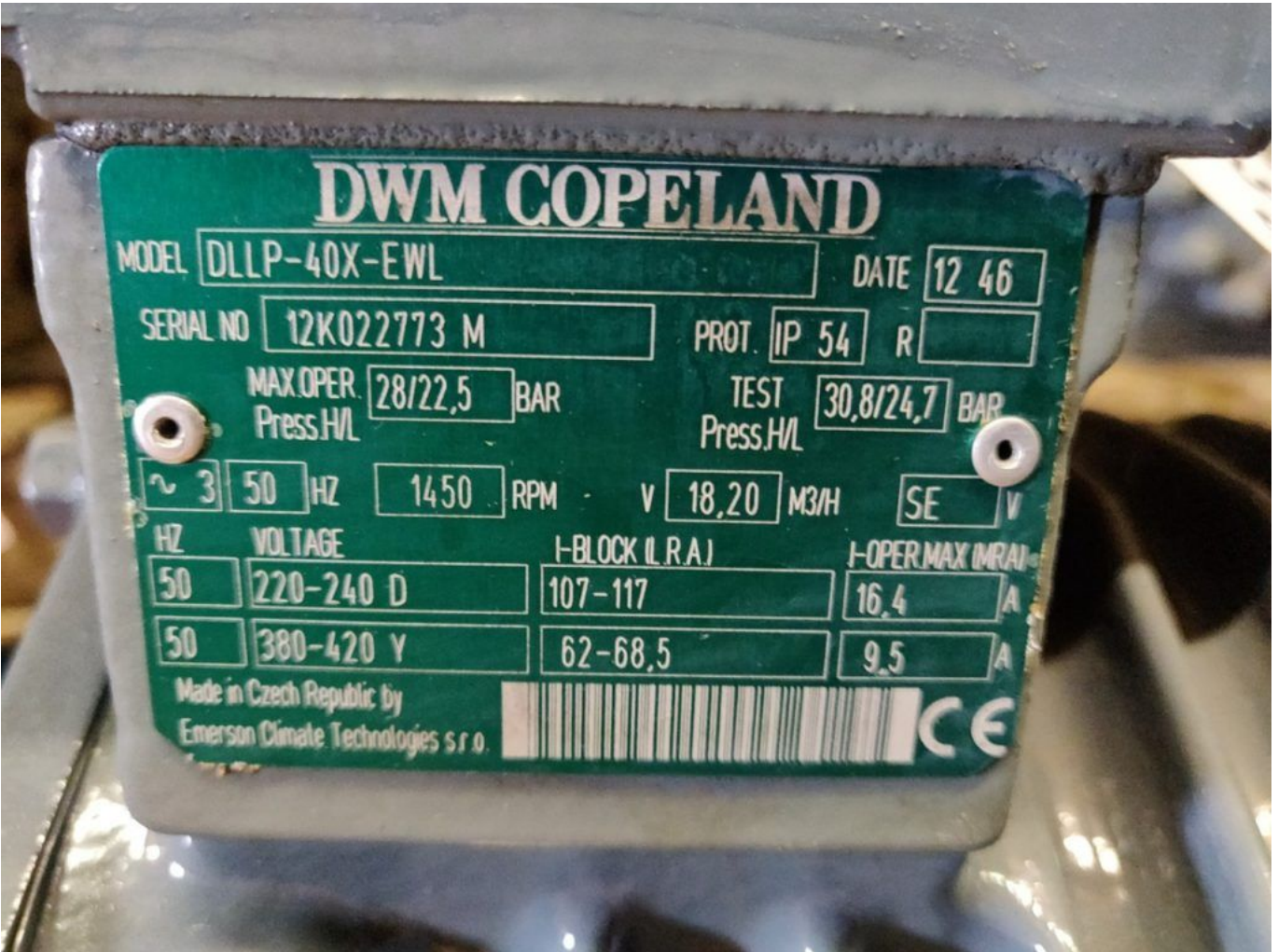
R134A/R404a réfrigérant R507

Les compresseurs DWM sont adaptés

Pour une large gamme d'applications soit sous la forme d'un seul des compresseurs, des unités de condensation ou comme équipement multi-compresseur

| Modèle        | Nom de HP | Déplacement m <sup>3</sup> /hr | Température d'évaporation (Capacité R404A/R507) |        |       |       |       |       |       |        |       | Amplification électrique s/ph |      |        |
|---------------|-----------|--------------------------------|---|--------|-------|-------|-------|-------|-------|--------|-------|-------------------------------|------|--------|
|               |           |                                | -35   | -30    | -25   | -20   | -15   | -10   | -5    | 0      | 5     | Rla*                          | Mcc* | L.R.Un |
| DKSJ-15X-EWL  | 1.5       | 6.3                            | 937   | 1260   | 1635  | 2075  | 2595  | 3200  | 3905  |        |       | 3.2                           | 3.5  | 20.4   |
| DLE-20X-EWL   | 2         | 9.9                            | 871   | 1430   | 2070  | 2810  | 3665  | 4655  | 5805  | 7130   | 8655  | 4.6                           | 5.7  | 37.6   |
| DLJ-30X-EWL   | 3         | 14.5                           | 1770  | 2540   | 3425  | 4460  | 5665  | 7070  | 8705  | 10590  | 12760 | 6.7                           | 8.0  | 53     |
| DLL-40X-EWL   | 4         | 18.1                           | 2273  | 3330   | 4558  | 5996  | 7670  | 9615  | 11870 | 14460  | 17460 | 7.9                           | 9.5  | 68.5   |
| DLSG-40X-EWL  | 4         | 22.5                           | 2980  | 4175   | 5625  | 7300  |       |       |       |        |       | 7.4                           | 8.9  | 53.4   |
| D2SC-65X-EWL  | 6.5       | 26.9                           |   | 5100   | 6750  | 8700  | 10900 | 13500 | 16400 | 19800  | 23700 | 12.7                          | 16.2 | 85.3   |
| D3SA-75X-AWM  | 7.5       | 32.2                           |   | 5600   | 7650  | 10500 | 12850 | 16100 | 19800 | 24100  | 28900 | 14.2                          | 17.9 | 82     |
| D3SC-100X-AWM | 10        | 38                             |   | 7150   | 9500  | 12250 | 15500 | 19300 | 23800 | 29000  | 35000 | 16.8                          | 21.6 | 106    |
| D3SS-150X-AWM | 15        | 49.9                           |   | 10350  | 13550 | 17200 | 21400 | 26300 | 32000 | 38500  | 46000 | 23.2                          | 30.2 | 125    |
| D4SA-200X-AWM | 20        | 56                             |   | 10650  | 14250 | 18400 | 23200 | 28800 | 35000 | 42500  | 51000 | 24.2                          | 30.5 | 160    |
| D4SH-250X-AWM | 25        | 70.8                           |   | 13300  | 17600 | 22600 | 28300 | 3500  | 42500 | 51500  | 62000 | 31.1                          | 40.1 | 192    |
| D4SJ-300X-AWM | 30        | 84.7                           |   | 15800* | 21200 | 27400 | 34500 | 43000 | 52500 | 64000  | 76500 | 36.2                          | 47.7 | 218    |
| D6SH-350X-AWM | 35        | 106                            |   | 19600* | 26000 | 33500 | 42000 | 52000 | 63500 | 76500  | 92000 | 49.6                          | 62.4 | 284    |
| D6SJ-400X-AWM | 40        | 127                            |   | 23100* | 30500 | 39000 | 49000 | 60500 | 74000 | 89000  | 1e+05 | 55.2                          | 71.8 | 347    |
| D6SK-500X-AWM | 50        | 151.8                          |   | 27200* | 36500 | 47000 | 59500 | 73500 | 90500 | 109500 | 1e+05 | 71                            | 94.7 | 415    |
| D8SJ600XB-1   | 60        | 181                            |   | 33000  | 44000 | 56500 | 71500 | 88500 | 1e+05 | 13500  | 15800 | 84                            | 107  | 544    |
| DKL20X-EWL    | 2         | 7.4                            | 940   | 1330   | 1790  | 2330  | 2950  | 3700  | 4500  |        |       | 2.6                           | 3.83 | 20.4   |
| DKSL20X-EWL   | 2         | 9.1                            | 1390  | 1860   | 2410  | 3060  | 3820  | 4700  | 5700  |        |       | 3.2                           | 4.7  | 20.4   |
| DLL30X-EWL    | 3         | 18.2                           | 2268  | 3293   | 4503  | 5918  |       |       |       |        |       | 5.5                           | 7.3  | 53     |
| D2SA-45X-EWL  | 4.5       | 22.4                           | 3160*   | 4300   | 56500 | 7250  | 9100  | 11250 | 13700 |        |       | 7.4                           | 11.4 | 68.5   |

|               |     |       |       |       |       |       |       |       |       |       |      |      |     |
|---------------|-----|-------|-------|-------|-------|-------|-------|-------|-------|-------|------|------|-----|
| D3SA-75X-AWM  | 7.5 | 32.2  | 5600  | 7650  | 10050 | 12850 | 16100 | 19800 | 24100 | 28900 | 10.5 | 17.9 | 82  |
| D3SC-75X-AWM  | 7.5 | 38    | 5013* | 6800  | 9000  | 11700 | 14850 | 18600 | 22900 |       | 12.4 | 18.7 | 82  |
| D3SS-100X-AWM | 10  | 49,9  |       | 9950  | 12900 | 16300 | 20300 | 24900 | 30500 |       | 16.3 | 26   | 109 |
| D4SF-100X-AWM | 10  | 56    |       | 11250 | 14600 | 18500 | 23200 | 28700 | 35000 |       | 16.9 | 27.1 | 105 |
| D4SL-150X-AWM | 15  | 70,8  |       | 14700 | 18900 | 23900 | 29700 | 36500 | 44000 |       | 21.7 | 35,6 | 156 |
| D4ST-200X-AWM | 20  | 84,7  |       | 17200 | 22400 | 28500 | 35500 | 44000 | 53500 |       | 24.2 | 42,4 | 175 |
| D6SL-250X-AWM | 25  | 106   |       | 21400 | 27700 | 35000 | 43500 | 53000 | 64000 |       | 31,4 | 56,5 | 199 |
| D6ST-320X-AWM | 32  | 127   |       | 25000 | 32000 | 40500 | 50500 | 62000 | 75000 |       | 39.2 | 62,9 | 255 |
| D6SU-400X-AWM | 40  | 151,8 |       | 29600 | 38500 | 49000 | 61500 | 75500 | 92000 |       | 47.3 | 78   | 304 |
| D8SJ-450X-BWM | 45  | 181   |       | 35500 | 46500 | 59000 | 74000 | 91000 | 1e+05 |       | 53.3 | 90,8 | 458 |



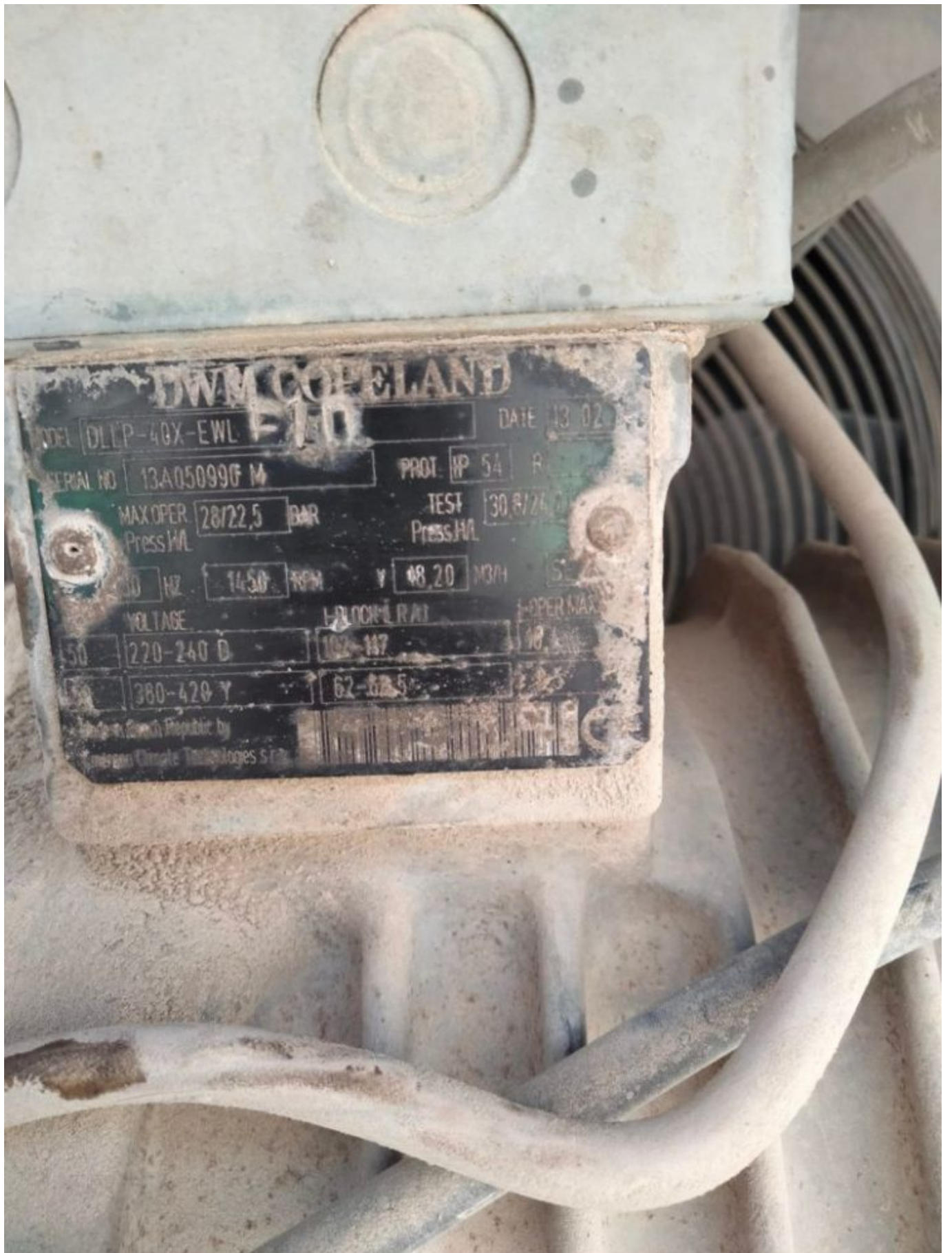




Private Picture Copyright: [WWW.MBSM.PRO](http://WWW.MBSM.PRO)







**DWM COPELAND**

MODEL DLLP-40X-EWL **510** DATE 13 02

SERIAL NO 13A050990 M PROT. HP 54 R

MAX OPER Press 28/22.5 BAR TEST Press 30.8/24.0

50 HZ 1450 RPM Y 48.20 M3/H

VOLTAGE 220-240 D 102-117 L-OPER MAX

380-420 Y 62-67.5

Made in Czech Republic by American Climate Technologies S.r.o.

**Barcode**

# FRIGA-BOHN

BE 2996889

|   |        |                   |                  |             |     |
|---|--------|-------------------|------------------|-------------|-----|
|  |        | +3904 72 47 14 44 |                  | 017 8198    |     |
| parts.service@hestrafeurope.com   |        |                   |                  |             |     |
| Model MUC 620 R   |        |                   |                  |             |     |
| Code PF5C07900  |        |                   | Serial N NG 3076 |             |     |
| Motor   | 1      | 1                 | 230              | $i_{max}$   | 0.7 |
|   | CLAS.B | 50/60             | V                | VA          | Y   |
| EER   |        | PDVE00158         |                  | PDVE00159   |     |
| V/1   |        | V/3               |                  | A Vol (dm3) |     |
| dttt  |        |                   |                  |             |     |

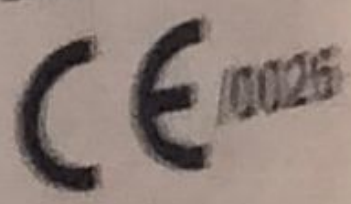




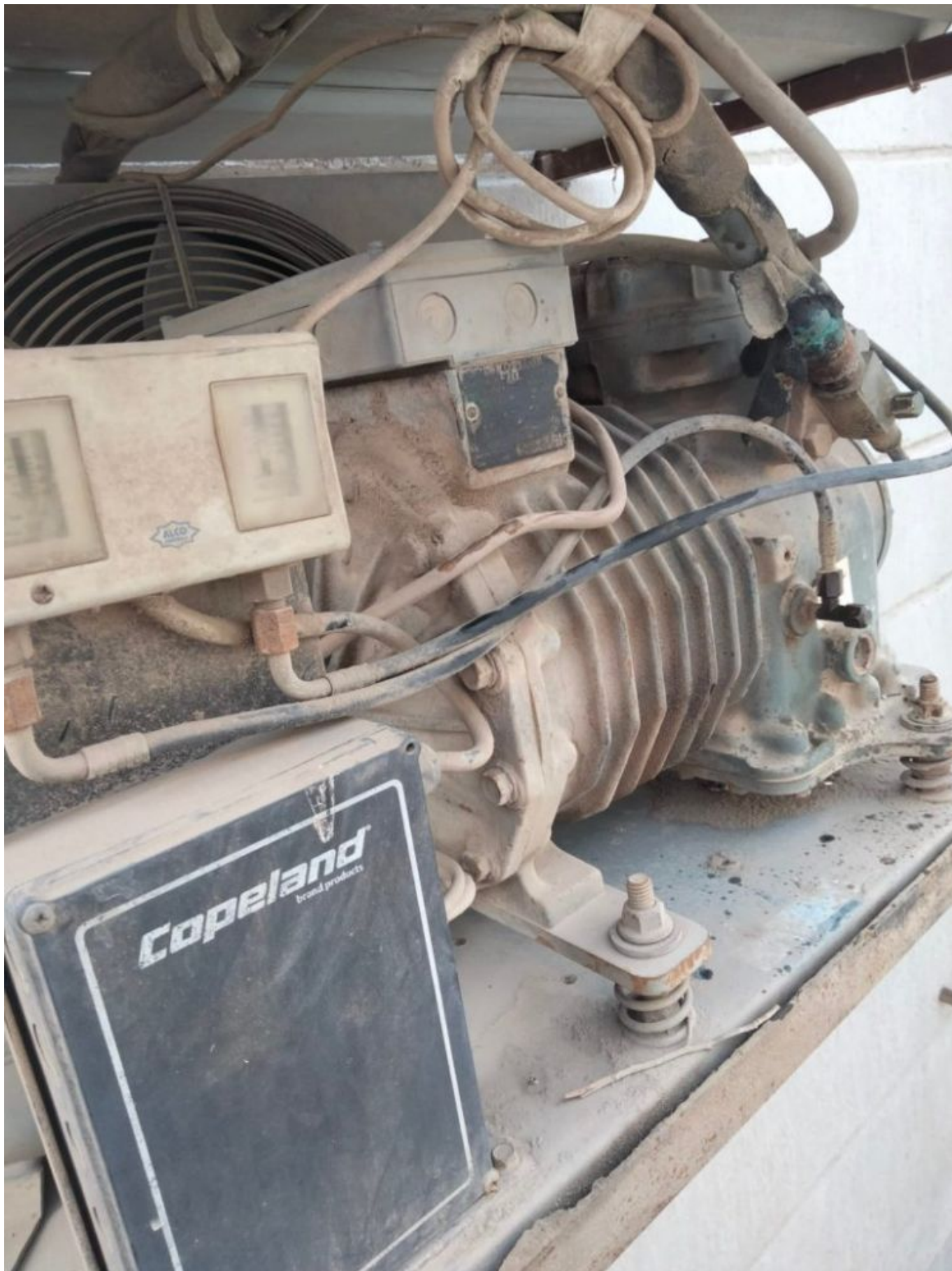
**CULOBEL** plant: PV-Czech  
Ul. Smozina 400, CZ-739 11 Frýdlant n. O.  
Ph: +420 585 530 900 Fax: +420 585 575 177  
[www.culobel.com](http://www.culobel.com)

RECEIVER 7.85L E1506 577-0523-01 id3154360

|                                       |         |                  |
|---------------------------------------|---------|------------------|
| Max Allowable pressure(PS):           | 33 bar  | Production date: |
| Test pressure (PT):                   | 48 bar  | 26.04.2013       |
| Max design Temp (TS <sub>max</sub> ): | 100°C   | Lotnumber: 053   |
| Min design Temp (TS <sub>min</sub> ): | -40°C   |                  |
| Refrigerant group:                    | 2       |                  |
| Total Volume (V):                     | 7.85 lt |                  |
| Final examination:                    | 2013    |                  |







Private Picture Copyright : [WWW.MBSM.PRO](http://WWW.MBSM.PRO)

Mbsm\_dot\_pro\_private\_PDF\_DLLP-40X-EWL Télécharger