

Mbsm.pro, Compressors, LG, CMA series, CMA053LHEG, 1/6 HP, Cma069lhem, 1/4 HP, Lbp, 195W, 667BTU, 220-240V 50Hz, 1 ph, Refrigerator, 19 Cf, T wansa 530, WRTW-530-NFSSC5, 530 L, 200 w, R134a, 153 G

Category: compressor

written by Lilianne | 22 March 2022



Private Picture Copyright: WWW.MBSM.PRO

## Information on Wansa Top Mount Refrigerator 19 Cft:

Brand WANSA

Article Number 125822

Model Number WRTW-530-NFSSC5

General

Features Reversible Door

Energy Efficiency Rating A+

Size (Cubic Feet) 19 CFT

Capacity Litres / Kilograms 530 Litre

No. of Wired Shelves 3

[Mbsm\\_dot\\_pro\\_private\\_PDF\\_Refrigerator\\_Compressor\\_151207-2Télécharger](#)

[Mbsm\\_dot\\_pro\\_private\\_PDF\\_CMA069LHEMTélécharger](#)



Private Picture Copyright: [WWW.MBSM.PRO](http://WWW.MBSM.PRO)



Private Picture Copyright : WWW.MBSM.PRO

**Regular Models:**

Model	Ref	App.	Voltage	Cooling Capacity			Power Input	Wire Type
				HP	W/hr	Btu/hr		
CMA042LHEGR134a		LBP	220V/50HZ	1/10HP	107W	365Btu	79W	Al-wire
CMA053LHEGR134a		LBP	220~240V/50HZ1/6HP		150W	512Btu	102W	Al-wire
CMA057LHEGR134a		LBP	220~240V/50HZ1/5HP		163W	556Btu	115W	Al-wire
CMA069LHEMR134a		LBP	220~240V/50HZ1/4HP		195W	667Btu	128W	Al-wire
NS36LAEG	R134a	LBP	220~240V/50HZ1/10HP		77W	262Btu	89W	Cu-wire
MSA43LBEG	R134a	LBP	220~240V/50HZ1/8HP		116W	397Btu	106W	Cu-wire
CMA053LAEMR134a		LBP	220~240V/50HZ1/6HP		148W	504Btu	93W	Cu-wire
CMA057LAEMR134a		LBP	220~240V/50HZ1/5HP		163W	558Btu	102W	Cu-wire
CMA069LBEMR134a		LBP	220~240V/50HZ1/4HP		195W	667Btu	116W	Cu-wire
CMA075LAEMR134a		LBP	220~240V/50HZ1/3HP		219W	746Btu	130W	Cu-wire
MA98LAEM	R134a	LBP	220~240V/50HZ1/3HP		279W	953Btu	183W	Cu-wire
LX95LHBM	R134a	LBP	220V/50HZ	1/3HP	267W	910Btu	173W	Cu-wire
LX110LAJM	R134a	LBP	220~240V/50HZ1/2HP		323W	1104Btu	232W	Cu-wire



Private Picture Copyright : WWW.MBSM.PRO

## R134a 220V~240V / 50Hz

## LBP HERMETIC COMPRESSOR FOR REFRIGERATOR

Part No.	Application	Series	Dis cc	Cooling Capacity			Power (w)	COP (w/w)	EER (Btu/w.h)
				(kcal/hr)	(w/he)	(Btu/hr)			
NS24LAEG	LBP	NS	2.4	38	44	151	76	0.58	1.99
NS24LBEG	LBP	NS	2.4	36	42	143	64	0.65	2.23
NS30LAEG	LBP	NS	3.0	54	63	214	84	0.78	2.65
NS36LAEG	LBP	NS	3.6	66	77	262	89	0.86	2.94
MSA30LAEG	LBP	MSA	3.0	67	78	266	80	0.97	3.30
MSA43LBEG	LBP	MSA	4.3	100	116	397	106	1.11	3.78
MSA43LAEM	LBP	MSA	4.3	100	116	397	94	1.23	4.20
MA98LAEM	LBP	MA	9.8	240	279	953	183	1.52	5.20
MA53LHEM	LBP	MA	5.3	129	150	512	106	1.42	4.83
MA57LHEM	LBP	MA	5.7	138	160	548	113	1.42	4.85
MA62LHEM	LBP	MA	6.2	150	174	596	137	1.27	4.35
MA69LHEM	LBP	MA	6.9	172	200	683	146	1.38	4.70

Private Picture Copyright : [WWW.MBSM.PRO](http://WWW.MBSM.PRO)

## R600a 220V~240V / 50Hz

## HERMETIC COMPRESSOR FOR REFRIGERATOR

Part No.	ASHRAE (Eva/Cond <sup>d</sup> +/-23.3°C/54.4°C)								
	PTC/ *M~RSCR, *G~RSIR						e-PTC/RSCR		
	Cooling Capacity			Power	COP	EER	Power	COP	EER
	(kcal/hr)	(w/he)	(Btu/hr)	(w)	(w/w)	(Btu/w.hr)	(w)	(w/w)	(Btu/w.h)
CMA057NAEM	84	98	335	51.20	1.91	6.53	49.7	1.97	6.73
CMA062NAEM	96	112	382	58.40	1.92	6.55	56.9	1.97	6.72
CMA069NAEM	103	120	410	62.50	1.92	6.56	61.0	1.97	6.72
CMA075NAEM	120	139	475	72.10	1.93	6.58	70.6	1.97	6.72
CMA082NAEM	129	151	514	78.00	1.93	6.59	76.5	1.97	6.72
CMA089NAEM	139	162	553	83.70	1.94	6.61	82.2	1.97	6.73
CMA098NAEM	155	180	615	94.8	1.90	6.48	93.3	1.93	6.59
CMA0110NAEM	167	194	662	106.40	1.82	6.23	104.9	1.85	6.31
**CMA121NBEM	187	218	744	119.30	1.83	6.24	117.8	1.85	6.32
CMA057NHEM	84	98	335	54.40	1.80	6.15			
CMA062NHEM	97	113	386	61.10	1.85	6.31			
CMA069NHEM	103	120	410	65.00	1.84	6.28			
CMA075NHEM	120	139	475	75.00	1.85	6.33			
CMA082NHEM	127	148	504	80.00	1.84	6.29			
CMA089NHEM	138	161	548	87.00	1.84	6.30			
CMA098NHEM	156	181	618	99.30	1.82	6.22	97.8	1.85	6.32
CMA082NJEG	127	148	505	89.70	1.65	5.63			
CMA089NJEG	138	160	546	97.60	1.64	5.60			
CMA098NJEG	155	180	615	112.50	1.60	5.46			
CMA098NJEM	152	177	604	108.00	1.64	5.60			

Private Picture Copyright : [WWW.MBSM.PRO](http://WWW.MBSM.PRO)

**LG compressor**



Power Source	Model	Cooling Capacity				Motor Input		EER		COP		Oil Charge [cc]
		[Btu/hr]		[Watts]		[Watts]		[Btu/W.hr]		[W/W]		
1PH, 220-240V, 50Hz	QJ208P	11800	12000	3458	3516	1093	1121	10.8	10.7	3.16	3.14	410
	QJ222P	12900	13000	3780	3810	1183	1203	10.9	10.8	3.20	3.17	410
	QJ236P	13600	13700	3985	3985	1308	1343	10.4	10.2	3.05	2.97	410
	QJ250P	14500	14650	4249	4293	1355	1382	10.7	10.6	3.14	3.11	410
	QJ264P	15200	15350	4454	4498	1407	1529	10.8	10.6	3.17	2.94	410
	QJ282P	16250	16400	4762	4806	1519	1561	10.7	10.5	3.13	3.08	500
	QJ292P	16700	16900	4894	4952	1575	1625	10.6	10.4	3.11	3.05	500
	QJ306P	18000	18100	5275	5275	1748	1810	10.3	10.0	3.02	2.93	500
	QJ325P	18700	18900	5480	5538	1820	1890	10.3	10.0	3.01	2.93	500

Private Picture Copyright: WWW.MBSM.PRO

# Wansa

**Type** WRTW-530-NFSSC5

**Voltage** 220-240V

**Frequency** 50Hz

**Rated Current** 1.1A

**Defrosting Power** 200W

**Electricity Consumption** 1.55kw.h/24h

**Gross Capacity** 530L

**Climate Classification** T

**Classification of Protection Against Electric Shock** Class I

**Foming Agent** C<sub>5</sub>H<sub>10</sub>(CP)

**Lamp Power** Max 2W

**Refrigerant and Inject Amount** R134a/153g

**Freezing Capacity** 5.5kg/24h

**Weight** 86kg

**Date of Production:** 2013 12 **Serial Number:** 1343370051

## Diagram of Circuit Principles

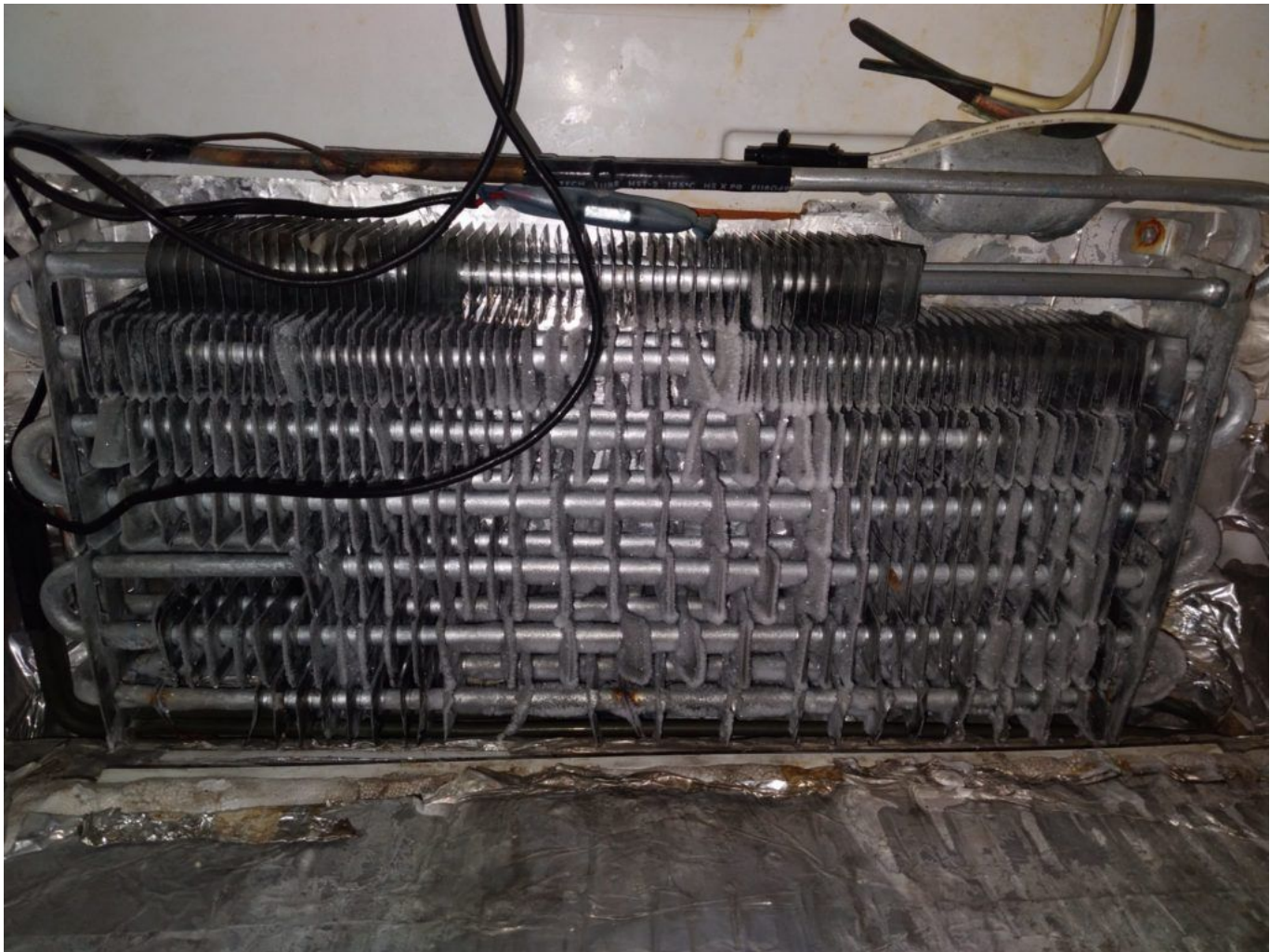
MADE IN CHINA

CB

Private Picture Copyright: WWW.MBSM.PRO



Private Picture Copyright: [WWW.MBSM.PRO](http://WWW.MBSM.PRO)



Private Picture Copyright: [WWW.MBSM.PRO](http://WWW.MBSM.PRO)





# Compressor LG CMA053LHEG

The LG CMA053LHEG 1 / 6HP Compressor is made of innovative, durable and highly efficient materials. The compressor uses pistons driven by a crankshaft to provide high-pressure refrigerant from the low to high side of a cooling system.

- Manufacturer: LG
- Model: CMA053LHEG
- Cooling Capacity HP: 1 / 6HP
- Cooling Capacity: 150W / 512BTU
- Refrigerant Gas: R134A
- Country of Manufacture: China

The package includes:

- Compressor LG CMA053LHEG
- PTC Relay
- Over Load Protector (OLP)
- Capacitor (M)
- Plastic protective cover for PTC, OLP
- Mounting accessories (screws, washers, nuts, rubber bands)

[Mbsm\\_dot\\_pro\\_private\\_PDF\\_LG\\_Refrigerator\\_Compressor\\_CatalogueTélécharger](#)

Fixed-Frequency ★ Series CMA R600a (Test Condition : Ashrae)

Eva/Cond=23.3/54.4

PTC/\*M RSCR,\*G RSIR

Rating	Series	Model	Cooling Capacity			Power (W)	COP (W/W)	EER (Btu/W.hr)
			(kcal/hr)	(W/hr)	(Btu/hr)			
220~240V 50Hz	CMA LBP	CMA053LAEM	127	148	504	93	1.59	5.42
		CMA057LAEM	141	163	558	102	1.61	5.50
		CMA069LAEM	165	192	655	119	1.61	5.50
		CMA075LAEM	188	219	746	130	1.68	5.74
		CMA053LHEG	129	150	512	106	1.42	4.83
		CMA053LHEM	129	150	512	102	1.48	5.05
		CMA057LHEG	140	163	556	115	1.42	4.83
		CMA057LHEM	138	160	548	110	1.46	4.98
		CMA062LHEM	153	178	607	117	1.52	5.19
		CMA062LHEG	153	178	607	122	1.46	4.98
115V 60Hz	CMA LBP	CMA069LHEM	168	195	667	128	1.52	5.20
		CMA069LBEM	168	195	667	116	1.68	5.75
		CMA042LHCG	111	129	441	91	1.42	4.84
		CMA053LHCG	144	167	572	118	1.42	4.84
220~240V 50/60Hz	CMA LBP	CMA042LHCM	111	129	441	88	1.47	5.01
		CMA053LHCM	155	167	572	112	1.50	5.10
		**CMA053LKTM	120	140	486	96	1.45	4.96
220~240V 50Hz	CMA LBP	**CMA057LKTM	129	150	512	102	1.47	5.02
		**CMA062LKEM	140	163	556	109	1.49	5.10
220v 60Hz	CMA HBP	**CMA069LKTM	158	184	627	122	1.51	5.14
		CMA042HHDM	405	471	1608	183	2.58	8.80
220v 60Hz	CMA HBP	CMA053HHDM	514	598	2041	229	2.61	8.90
220v 60Hz		CMA062HHDM	615	715	2442	277	2.58	8.80
220v 60Hz		CMA075HADM	740	860	2938	334	2.58	8.80

Model	Ref	App.	Voltage	Cooling Capacity			Power Input	Wire Type
				HP	W/hr	Btu/hr		

CMA042LHEG	R134a	LBP	220V/50HZ	1/10HP	107W	365Btu	79W	Al-wire
CMA053LHEG	R134a	LBP	220~240V/50HZ	1/6HP	150W	512Btu	102W	Al-wire
CMA057LHEG	R134a	LBP	220~240V/50HZ	1/5HP	163W	556Btu	115W	Al-wire
CMA069LHEM	R134a	LBP	220~240V/50HZ	1/4HP	195W	667Btu	128W	Al-wire
NS36LAEG	R134a	LBP	220~240V/50HZ	1/10HP	77W	262Btu	89W	Cu-wire
MSA43LBEG	R134a	LBP	220~240V/50HZ	1/8HP	116W	397Btu	106W	Cu-wire
CMA053LAEM	R134a	LBP	220~240V/50HZ	1/6HP	148W	504Btu	93W	Cu-wire
CMA057LAEM	R134a	LBP	220~240V/50HZ	1/5HP	163W	558Btu	102W	Cu-wire
CMA069LBEM	R134a	LBP	220~240V/50HZ	1/4HP	195W	667Btu	116W	Cu-wire
CMA075LAEM	R134a	LBP	220~240V/50HZ	1/3HP	219W	746Btu	130W	Cu-wire
MA98LAEM	R134a	LBP	220~240V/50HZ	1/3HP	279W	953Btu	183W	Cu-wire
LX95LHBM	R134a	LBP	220V/50HZ	1/3HP	267W	910Btu	173W	Cu-wire
LX110LAJM	R134a	LBP	220~240V/50HZ	1/2HP	323W	1104Btu	232W	Cu-wire

Model	Ref	App.	Voltage	Cooling Hp	Capacity W/hr	Power Input	COP (W/W)	Wire Type
CSB057NJEG	R600a	LBP	220V/50HZ	1/10HP	100W	77W	1.30	Al-wire
CSB069NJEG	R600a	LBP	220V/50HZ	1/8HP	126W	90W	1.40	Al-wire
CSB075NJEG	R600a	LBP	220V/50HZ	1/6HP	139W	102W	1.36	Al-wire
CSB089NJEG	R600a	LBP	220V/50HZ	1/5HP	160W	98W	1.64	Al-wire
CMA098NJEG	R600a	LBP	220V/50HZ	1/5+HP	180W	112W	1.60	Al-wire
CMA110NJEM	R600a	LBP	220V/50HZ	1/4HP	194W	122W	1.58	Al-wire
CMA121NBEM	R600a	LBP	220V/50HZ	1/4+HP	220W	119W	1.85	Al-wire

Model	reference number	application.	energy	Cooling capacity			energy wire	
				mobile phone	W/hour	Btu/hr	Input	Type
CMA053LHEG	R134a	pulp	220~240V/50HZ	1/6HP	150W	512Btu	102W	Al-wire
CMA057LHEG	R134a	pulp	220~240V/50HZ	1/5HP	163W	556Btu	115W	Al-wire
<b>CMA069LHEM</b>	<b>R134a</b>	<b>pulp</b>	<b>220~240V/50HZ</b>	<b>1/4HP</b>	<b>195W</b>	<b>667Btu</b>	<b>128W</b>	<b>Al-wire</b>
NS36LAEG	R134a	pulp	220~240V/50HZ	1/10HP	77W	262Btu	89W	Cu-wire
MSA43LBEG	R134a	pulp	220~240V/50HZ	1/8HP	116W	397Btu	106W	Cu-wire
CMA053LAEM	R134a	pulp	220~240V/50HZ	1/6HP	148W	504Btu	93W	Cu-wire
CMA057LAEM	R134a	pulp	220~240V/50HZ	1/5HP	163W	558Btu	102W	Cu-wire
CMA069LBEM	R134a	pulp	220~240V/50HZ	1/4HP	195W	667Btu	116W	Cu-wire
CMA075LAEM	R134a	pulp	220~240V/50HZ	1/3HP	219W	746Btu	130W	Cu-wire
MA98LAEM	R134a	pulp	220~240V/50HZ	1/3HP	279W	953Btu	183W	Cu-wire
LX110LAJM	R134a	pulp	220~240V/50HZ	1/2 HP	323W	1104Btu	232W	Cu-wire