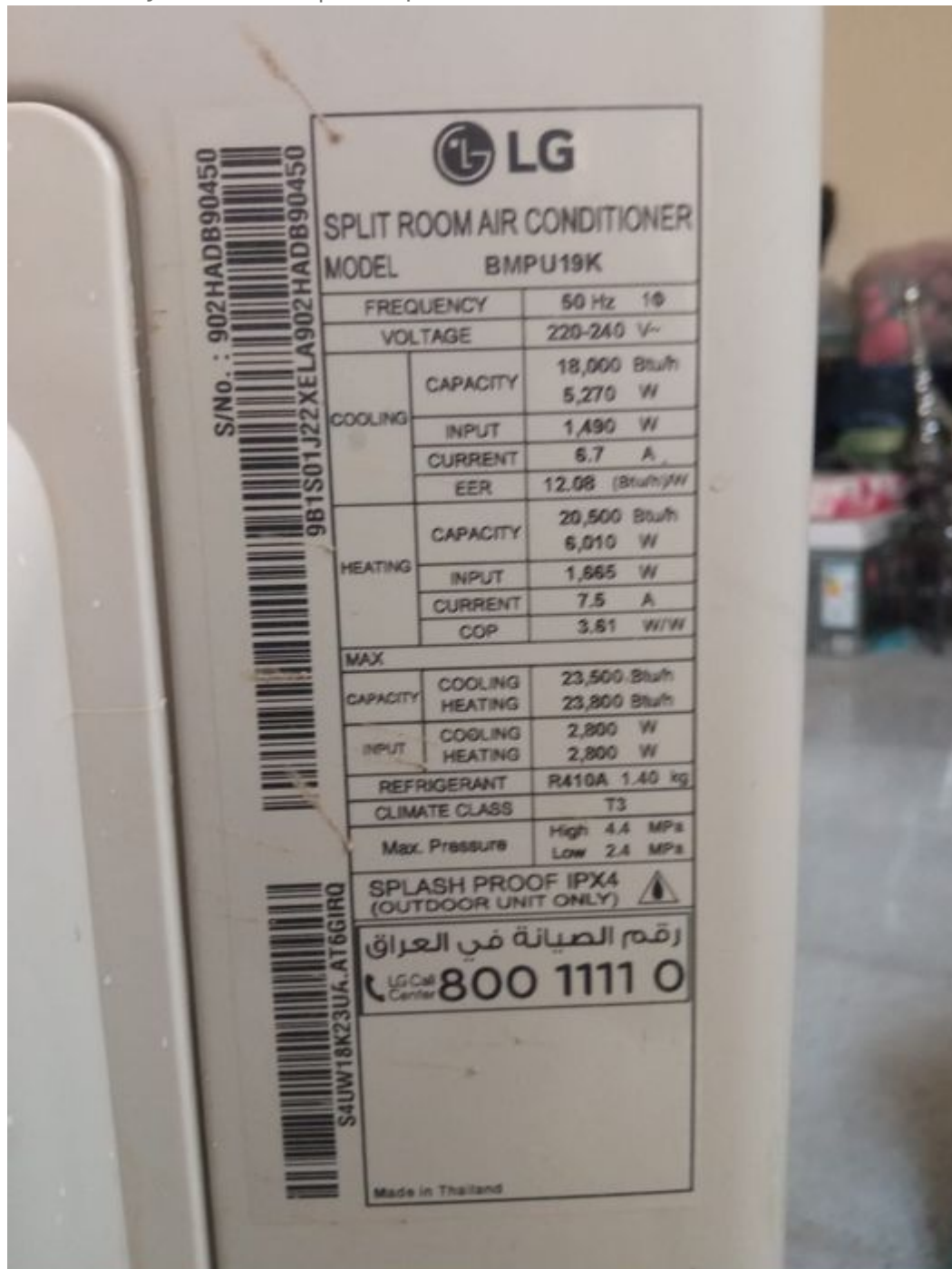


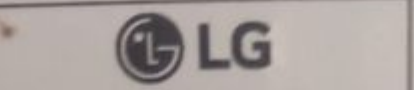
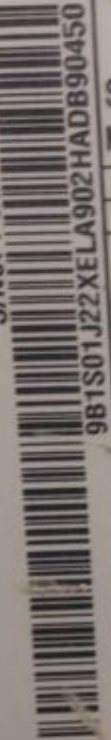
# Mbsm.pro, LG, SPLITROOM, AIR CONDITIONER, BMPU19K, 19000 btu, r410, 1400 g

Category: air conditioner

written by Lilianne | 2 September 2022

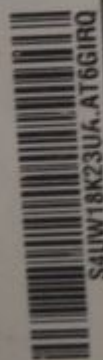


S/NO. : 902HADB90450



**SPLIT ROOM AIR CONDITIONER**  
**MODEL BMPU19K**

FREQUENCY		50 Hz 1Φ
VOLTAGE		220-240 V~
COOLING	CAPACITY	18,000 Btu/h 5,270 W
	INPUT	1,190 W
	CURRENT	6.7 A
	EER	12.08 (Btu/h/W)
HEATING	CAPACITY	20,500 Btu/h 6,010 W
	INPUT	1,665 W
	CURRENT	7.5 A
	COP	3.51 W/W
MAX		
CAPACITY	COOLING	23,500 Btu/h
	HEATING	23,800 Btu/h
INPUT	COOLING	2,800 W
	HEATING	2,800 W
REFRIGERANT		R410A 1.40 kg
CLIMATE CLASS		T3
Max. Pressure		High 4.4 MPa Low 2.4 MPa



**SPLASH PROOF IPX4**  
**(OUTDOOR UNIT ONLY)** ⚠️

رقم الصيانة في العراق  
LG Call Center **800 111 0**

Made in Thailand