

Mbsm.pro, Compressor, SC12/12CL, 104L 4088, Compressor twin, SECOP, 104L4088, R404A/R507, 3/8 hp, mhbp

Category: compressor

written by Lilianne | 6 April 2024



Replacement Secop / Danfoss SC12 CSIR Compressor

refrigerant R404a/R507

type SC12CL

power 3/8 HP

cylinder capacity 12,87 cm³

motor system CSIR

voltage 220-240 V

height 209 mm

power at -10°C 1220 W

power at -5°C 1505 W

power at 0°C - W

power at +5°C - W

power at -30°C 410 W

power at -25°C 568 W

power at -20°C 754 W

power at -15°C 971 W

power at +10°C - W

test method ASHRAE

application LBP

frequency 50 Hz

weight 12,5 k

SECOP Part reference – 104L2623-HST DANFOSS

AHT Part Reference – 234339

Mondial Framec – 4109024, 1147206

SC12/12CL LBP/MBP Twin Compressor R404A/R507 220-240V 50Hz

Data Sheet (Replaces CF.54.G1.02)

General

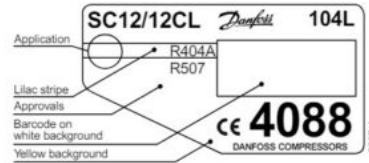
Compressor	SC12/12CL
Code number	104L4088

Application

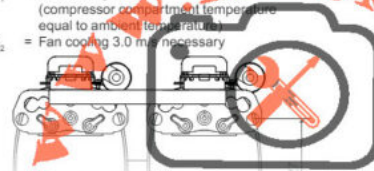
Application	LBP/MBP	
Evaporating temperature range	°C	-45 to -5
Voltage range	V/Hz	198 - 254 /50
Motor type	CSIR	
Max. ambient temperature	°C	38
Comp. cooling at ambient temp.	32°C	F ₂
	38°C	F ₂

Design

Displacement	cm ³	2 x 12.87
Oil quantity	cm ³	1220
Maximum refrigerant charge	g	2200



- S = Static cooling normally sufficient
- O = Oil cooling
- F₁ = Fan cooling 1.5 m/s (compressor compartment temperature equal to ambient temperature)
- F₂ = Fan cooling 3.0 m/s necessary



https://www.mbsm.pro/pro/__mbsm-pro-compressor-SC12-12CL.pdf