

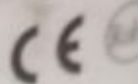
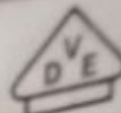
Mbsm.pro, Compressor, T3, 3.3 hp,
30000 btu, nht52vbat, 14 A,
Mitsubishi Compressor, r22, 4.5 bar

Category: compressor,Invention
written by Lilianne | 30 August 2022



SIAM COMPRESSOR INDUSTRY

MITSUBISHI ELECTRIC GROUP



REFRIGERANT COMPRESSOR

MODEL **NHT52VBAT**

MANUFACTURING DATE **18052012**

POWER SOURCE

220-240V 1~ 50Hz

POWER INPUT **2970 W** AT **50** Hz

LRA **86/94** A

REFRIGERANT **R-22**

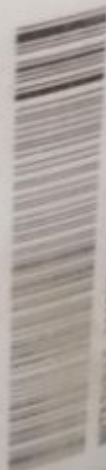
OIL **1.30 L**

AP **2.74** MPa

SP **10.5** MPa

THERMALLY PROTECTED

MADE IN THAILAND



NHT52VBAT-011205-1-0000

Mbsm.pro, Compressor, T3, 3.3 hp, 30000 btu, nht52vbat, 14 A, Mitsubishi Compressor

Mbsm.pro, Retardateur d'ampérage de démarrage , Exécution de 3000 W sur un ampérage max 10 a

Category: Invention,Technologie

written by Lilianne | 30 August 2022

Mbsm.pro, Retardateur d'ampérage de démarrage , Exécution de 3000 W sur un ampérage max 10 a

$3000 \text{ w} = 3000/220 \text{ v} = 13.636 \text{ a}$

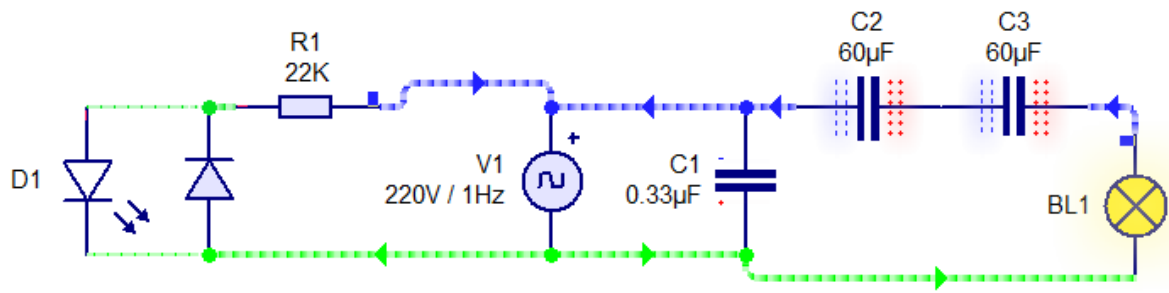
le but c'est démarrer une machine 3000 W sous un disjoncteur 10 A

$10 \text{ A} = 220 \text{ V} * 10 \text{ A} = 2200 \text{ W}$

$3000 \text{ W} - 2200 \text{ W} = 800 \text{ w} = 800 \text{ W} / 220 \text{ V} = 3.636 \text{ A}$

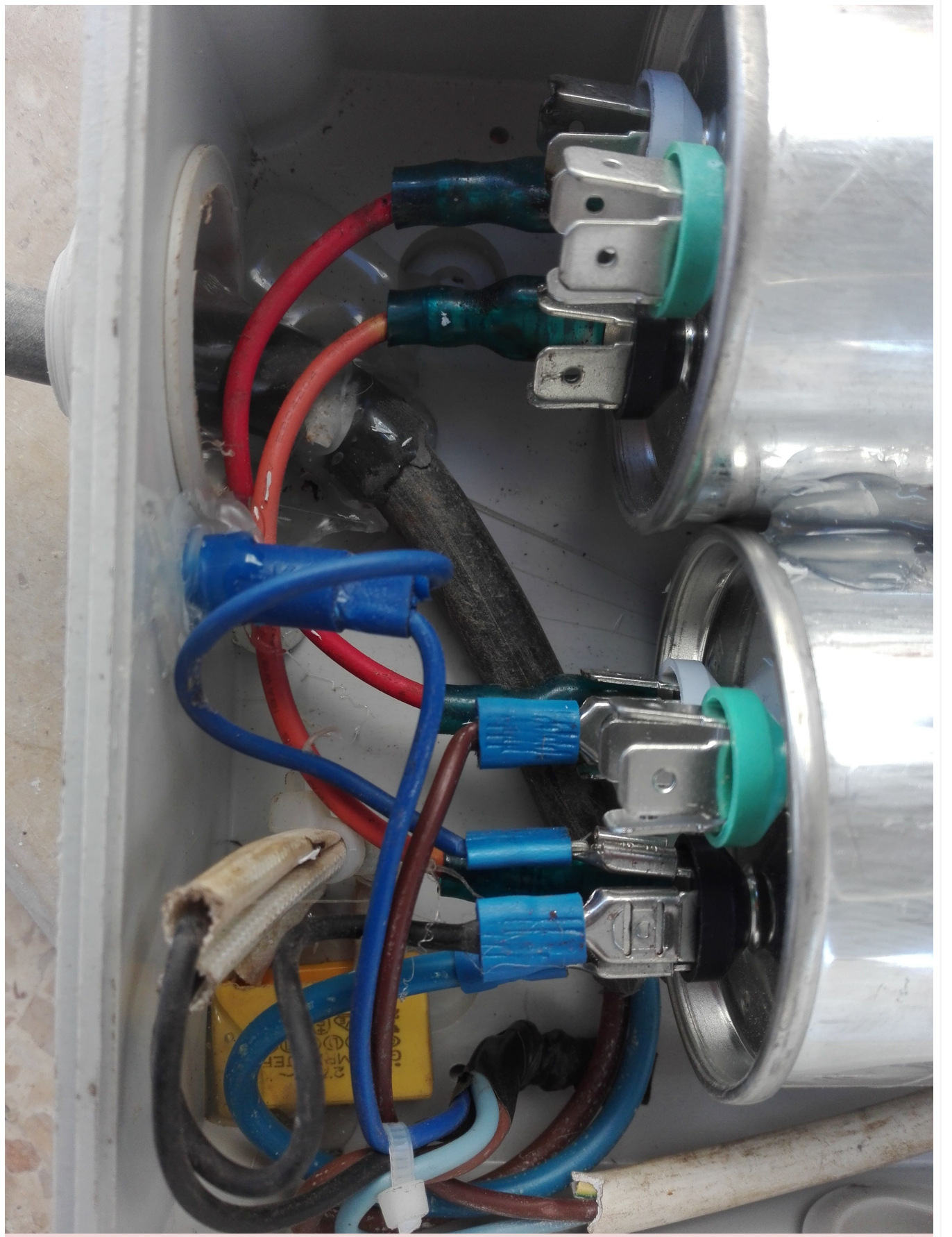


www.mbsm.pro



Picture5 Mbsm Dot Pro : www.mbsm.pro



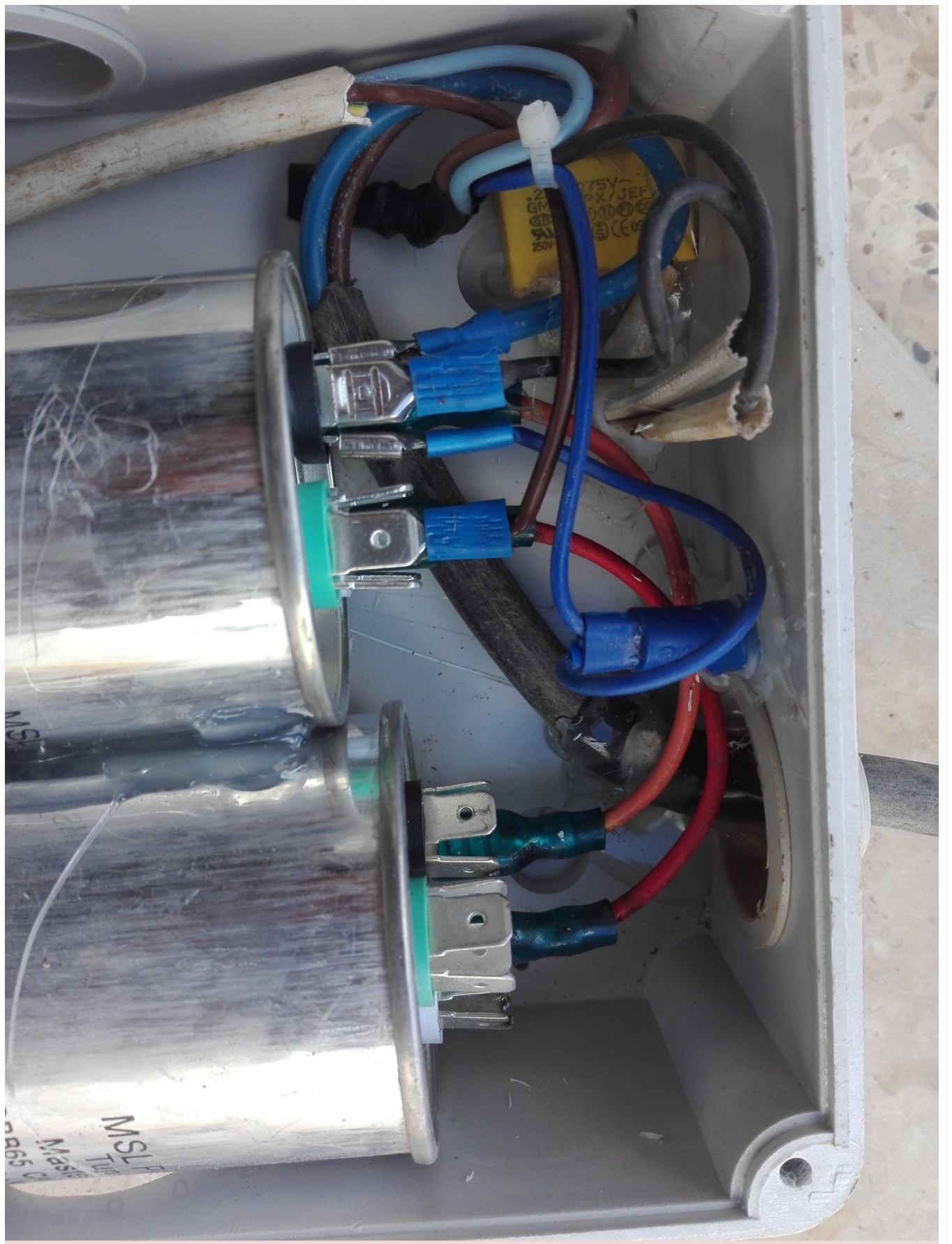






MSL PA
Tunis
Master
CBB65 CAP
60+5 μ F \pm 5%
450VAC B
40/85/21
TUV Vegetab

MSL PA
Tunis
Master
CBB65 CAP
60+5 μ F \pm 5%
450VAC B
40/85/21
TUV Vegetab



Invention , Compresseur d'air 24 bar , www.mbsm.pro

Category: Invention

written by Lilianne | 30 August 2022

Invention , Compresseur d'air 24 bar , www.mbsm.pro



Invention , Bombe de Détartrage acide 40 bar , une solution des Plombiers professionnels

Category: Invention,Non classé

written by Lilianne | 30 August 2022

Invention , Bombe de Détartrage acide 40 bar , une solution des Plombiers professionnels

Il suffit de 5 litre d'acide de détartrage et d'un compresseur minimum 8.5 bar ,en peu détartrer 100m de cuivre et c'est bien tester et efficace ,

