

**230V ,compressor, Danfoss  
,SC15MFX , made by Secop,  
R134a ,refrigeration, CSIR ,  
Moteur HP , R134a ,3 / 8HP  
,HMBP ,1PH**

written by Lilianne | 30 April 2020

230V ,compressor, Danfoss ,SC15MFX , made by Secop, R134a  
,refrigeration, CSIR , Moteur HP , R134a ,3 / 8HP ,HMBP ,1PH

---

**AEA3440YXC ,Tecumseh Product  
Co ,HBP ,Moteur HP , 1PHase,  
1/3HP , High Back Pressure  
,R134a ,220-240V ~ 50Hz  
,Reciprocating Compressor  
,996W**

written by Lilianne | 30 April 2020

AEA3440YXC ,HBP ,Moteur HP , 1HP, 1/HP , High Back Pressure  
,R134a ,220-240V ~ 50Hz ,Reciprocating Compressor

---

# DAEWOO Compressor , HSL25YE-5, 1/4HP, 1PH, R134a , 220-240V 50Hz, Puissance frigorigifique, 204 W , 690 BTU

written by Lilianne | 30 April 2020



DAEW00 Compressor , HSL25YE-5, 1/5HP , 1PH, R134a ,220-240V  
50Hz,Puissance frigorifique 176 W

---

## **Danfoss ,Fridge Compressor ,NL7FT , 1/4 HP ,R134a**

written by Lilianne | 30 April 2020

Danfoss ,Fridge Compressor ,NL7FT , 1/4 HP ,R134a

---

**Compressor ELECTROLUX,  
CUBIGEL ,GP12TB ,Hermetic  
piston ,ACC ,HMBP , moteur HP  
, 3/8 HP++, 1/2 hp- , 1PH ,  
R134A , Pression 1.7 Bar ,  
220V**

written by Lilianne | 30 April 2020

	<b>Model</b>	<b>Refr.</b>	<b>HP</b>
▶ <input type="checkbox"/>	<b><u>GL45PB</u></b>	HMBP::R134a	1/6
▶ <input type="checkbox"/>	<b><u>GL45PB</u></b>	HMBP::R134a	1/6
▶ <input type="checkbox"/>	<b><u>GL45TB</u></b>	HMBP::R134a	1/6
▶ <input type="checkbox"/>	<b><u>GL60PB</u></b>	HMBP::R134a	1/5
▶ <input type="checkbox"/>	<b><u>GL60TB</u></b>	HMBP::R134a	1/5
▶ <input type="checkbox"/>	<b><u>GL80PB</u></b>	HMBP::R134a	1/5
▶ <input type="checkbox"/>	<b><u>GL80TB</u></b>	HMBP::R134a	F
▶ <input type="checkbox"/>	<b><u>GL90TB</u></b>	HMBP::R134a	1/4
▶ <input type="checkbox"/>	<b><u>GP12TB</u></b>	HMBP::R134a	3/8

PictureS Mbsm Dot Pro : [www.mbsm.pro](http://www.mbsm.pro)

Private Picture Copyright : [WWW.MBSM.PRO](http://WWW.MBSM.PRO)

Compressor ELECTROLUX, CUBIGEL GP12TB ,Hermetic piston ,ACC ,HMBP , moteur HP , 3/8 HP , 1PH , R134A , Pression 1.7 Bar

# The best way, to clean the capillary ,from oils, and repair Blockage, in cooling with Gaz R22

written by Lilianne | 30 April 2020

The best way to clean the capillary from oils and repair Blockage in cooling with Gaz R22

---

# QBH57C10GPX, 1/6HP ,RSIR, Reciprocating Fixed Speed, Compressors, R134a, LBP ,PANASONIC SMALL REFRIGERATOR

written by Lilianne | 30 April 2020

QBH57C10GPX, 1/6HP ,RSIR, Reciprocating Fixed Speed, Compressors, R134a, LBP ,PANASONIC SMALL REFRIGERATOR

---

# ZEL , Refrigeration

**, Compressor , Gml200a , 152w ,  
1/5 Hp , 220/240V/50Hz , R134a**

written by Lilianne | 30 April 2020

**MADE IN EGYPT**



**unionaire<sup>®</sup> SPECIFICATIONS**

<b>MODEL</b>	<b>RD 310</b>
<b>REFRIGERANT/AMOUNT</b>	<b>R134a / 100g</b>
<b>RATED INPUT OF LAMP</b>	<b>15 W</b>
<b>RATED VOLTAGE</b>	<b>220-240V~</b>
<b>RATED CURRENT</b>	<b>1.1A</b>
<b>RATED FREQUENCY</b>	<b>50HZ</b>
<b>CLIMATE CLASS</b>	<b>T</b>
<b>POWER INPUT</b>	<b>130 W</b>
<b>GROSS VOLUME</b>	<b>310 L</b>
<b>CAPACITY (NET)</b>	<b>290 L</b>
<b>GROSS VOLUME cabinet</b>	<b>227</b>
<b>Net volume cabinet</b>	<b>210</b>
<b>PRODUCTION DATE</b>	<b>JULY/2108</b>

Private Picture Copyright : [WWW.MBSM.PRO](http://WWW.MBSM.PRO)

ZEL , Refrigeration , Compressor , Gml200a , 152w , 1/5 Hp , 220/240V/50Hz , R134a

---

**HERMETIC , AW5524EK  
, Compressor , 20,950 BTU  
, 230/1/60 R-22 , : 220-240  
V/50 Hz. , 1 Phase ,  
1.7458333333 TON**

written by Lilianne | 30 April 2020

Electrical : 220-240 V/50 Hz. 1 Phase

Nominal Performance

Capacity 6,140 / – Watts

20,950 / – BTU/Hr

5,280 / – Kcal/Hr

Power Input 2,089 / – Watts

Locked Rotor Amps 51.30 / – Amps

Max Continuous Current – / – Amps

Rated Load Amps 9.64 / – Amps

COP 2.94 / – Watts / Watts

EER 10.03 / – BTU/W-Hr

Testing Conditions

Condensing Temperature 54.40 °C 129.9 °F

Evaporating Temperature 7.20 / – °C 45.0 / – °F

Liquid Temperature 46.10 °C 115.0 °F

Return Gas Temperature 35.00 °C 95.0 °F

Ambient Temperature 35.00 °C 95.0 °F

Application

Evaporating Temp. Range HBP, A/C @ 0.00 ° C to 13.00 ° C  
(32.0° F to 55.4° F)

Heat Pump -23.30 ° C to 13.00 ° C  
(-9.9° F to 55.4° F)

Refrigerant R22

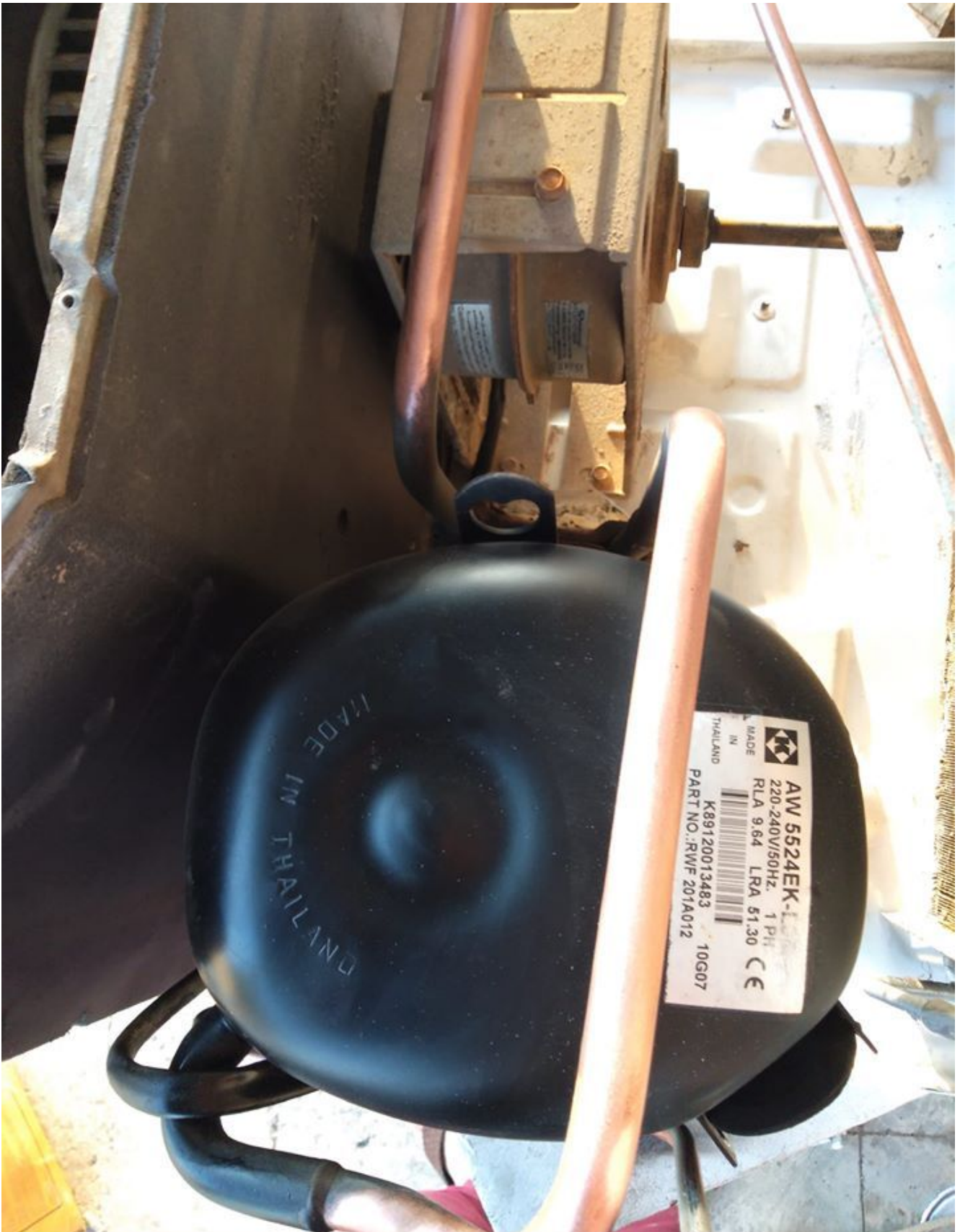


Refrigerant Flow Control Capillary Tube  
Compressor Cooling Fan  
Compressor and Motor data  
Compressor Type Reciprocating  
Displacement 43.10 cc.  
Oil Type Mineral Oil  
Oil Charge 964 cc.  
Motor Type P.S.C ; 2 Pole 2,850 / – r/m  
Voltage Range 198-264/- Volts 50/- Hz.  
Winding Resistance at 25 ° C  
Start 2.52 Ohms  
Run 1.24 Ohms  
Weight with Oil 27.72 Kg.  
Weight with Oil and Accessories 28.05 Kg.  
Electrical Components  
Motor Protector  
Type Internal Overload  
Model Number 4042KGE661-2  
Open / Close 125-135 / 50-70 ° C  
1st Cycle trip at 25 ° C 50.00 Amps(main) 30.00 Amps(start)  
Motor Starter  
Type Potential Relay  
Model Number 4043KGE681-4(RVA3G6D)  
Pick Up (max.) 180.00-195.00 Volts  
Drop Out (min.) 40.00-90.00 Volts  
Terminal Cover KGM 901-3  
Start Capacitor 88-106 µF 330 VAC.  
Disch Resistor for Start Cap –  
Run Capacitor 45 µF 370/440 VAC.  
Mounting Kit  
Rubber Grommet 4007KGM905-2  
Sleeve Grommet 4023KGM903-2  
Washer –

Since we are constantly improving our product , the  
specification are subject to change without notice.

REV. DATE C / N No.

ECN 01-04-14 ECN 0515/13





dot Pro : [www.mbsm.pro](http://www.mbsm.pro)

DOCUMENTATION PDF

Mbsm\_dot\_pro\_private\_pictureAW5524EKTélécharger

---

**D110C24GAX5 , PANASONIC  
,RSIR, Serie D, Reciprocating  
,Compressors , 298 w , 1/3 HP  
, R134a ,220v 50Hz**

written by Lilianne | 30 April 2020

displacement cm <sup>3</sup>	W (cooling)	BTU/HR	K Cal/hr	HP	Model	number
5.1	135	461	116	1/6	D51C10RAW5	1
5.1	135	461	116	1/6	D51C90RAW5	2
5.7	141	481	121	1/6	D57C10RAW5	3
5.7	141	481	121	1/6	D57C13RAX5	4
6.6	160	546	138	1/5	D66C10RAW5	5
6.6	151	515	130	1/5	D66C10RAX5	6
7.7	186	635	160	1/5	D77C10RAW5	7
7.7	186	635	160	1/5	D77C10RAX5	8
9.1	227	774	195	1/4	D91C10RAW5	9
9.1	227	774	195	1/4	D91C10RAX5	10
11.0	298	1017	256	1/3	D51C21RAX5	11
11.0	298	1017	256	1/3	D110C21RA25	12
11.0	298	1017	256	1/3	D110C21RBX5	13
11.0	298	1017	256	1/3	D110C24GAX5	14



Private Picture Copyright : [WWW.MBSM.PRO](http://WWW.MBSM.PRO)

D110C24GAX5 , PANASONIC ,RSIR, Serie D, Reciprocating  
,Compressors , 298 w , 1/3 HP , R134a ,220v 50Hz