

The best way, to clean the capillary ,from oils, and repair Blockage, in cooling with Gaz R22

written by Lilianne | 28 April 2020

The best way to clean the capillary from oils and repair Blockage in cooling with Gaz R22

QBH57C10GPX, 1/6HP ,RSIR, Reciprocating Fixed Speed, Compressors, R134a, LBP ,PANASONIC SMALL REFRIGERATOR

written by Lilianne | 28 April 2020

QBH57C10GPX, 1/6HP ,RSIR, Reciprocating Fixed Speed, Compressors, R134a, LBP ,PANASONIC SMALL REFRIGERATOR

Installation de mitigeur de

douche Jacousie encastré

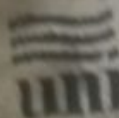
written by Lilianne | 28 April 2020

Les artistes de plomberie et chauffage central

**ZEL , Refrigeration
, Compressor , Gml200a , 152w ,
1/5 Hp , 220/240V/50Hz , R134a**

written by Lilianne | 28 April 2020

MADE IN EGYPT



unionaire

SPECIFICATIONS

| | |
|-----------------------------|---------------------|
| MODEL | RD 310 |
| REFRIGERANT/AMOUNT | R134a / 100g |
| RATED INPUT OF LAMP | 15 W |
| RATED VOLTAGE | 220-240V~ |
| RATED CURRENT | 1.1A |
| RATED FREQUENCY | 50HZ |
| CLIMATE CLASS | T |
| POWER INPUT | 130 W |
| GROSS VOLUME | 310 L |
| CAPACITY (NET) | 290 L |
| GROSS VOLUME cabinet | 227 |
| Net volume cabinet | 210 |
| PRODUCTION DATE | JULY/2108 |

Private Picture Copyright : WWW.MBSM.PRO

ZEL , Refrigeration , Compressor , Gml200a , 152w , 1/5 Hp , 220/240V/50Hz , R134a

HFC refrigerant , hydrofluorocarbons , is the third generation, of fluorinated refrigerants

written by Lilianne | 28 April 2020

HFC refrigerant (hydrofluorocarbons) is the third generation of fluorinated refrigerants. Recognized as Ozone Depleting Potential (ODP) and Global Warming Potential (GWP), they represent a greener alternative to CFC and HCFC. Refrigerants in this group are applicable to refrigeration plants and air conditioning units designed specifically for their use. In addition, they can serve as drop-in replacements for older CFCs and HCFCs.

The HFC group includes the following products:

R23

R32

R134a

R404A

R407A

R407C

R407F (PERFORMAX LT)

R410A

R417A (ISCEON M059)

R422A (ISCEON M079)

R422D (ISCEON M029)

R423A (ISCEON 39TC)

R424A (RS-44)

R427A (Forane 427A)

R428A (RS-52)
R434A (RS-45)
R437A (ISCEON M049Plus)
R438A (ISCEON M099)
R442A (RS-50)
R449A (OPTEON XP40)
R507A
R508B (SUVA 95)
ISCEON M089
R1234yf

مركبات الهيدروفلوروكربون) هي الجيل الثالث من المبردات (HFC المفلورة

وإمكانية (ODP) معترف بها على أنها إمكانات استنفاد الأوزون .
فهي تمثل بديلاً أكثر خضرة لمركبات ، (GWP) الاحترار العالمي
الكربون الكلورية فلورية ومركبات الكربون الهيدروكلورية فلورية .
تنطبق المبردات في هذه المجموعة على محطات التبريد ووحدات تكييف
الهواء المصممة خصيصاً لاستخدامها. بالإضافة إلى ذلك ، يمكن أن
تكون بمثابة بدائل منسدة لمركبات الكربون الكلورية فلورية
ومركبات الكربون الهيدروكلورية فلورية القديمة.

:المنتجات التالية HFC تتضمن مجموعة

R23
R32
R134a
R404A
R407A
R407C
R407F (PERFORMAX LT)
R410A
R417A (ISCEON M059)
R422A (ISCEON M079)
R422D (ISCEON M029)
R423A (ISCEON 39TC)
R424A (RS-44)
R427A (Forane 427A)
R428A (RS-52)

R434A (RS-45)
R437A (ISCEON M049Plus)
R438A (ISCEON M099)
R442A (RS-50)
R449A (OPTEON XP40)
R507A
R508B (SUVA 95)
ISCEON M089
R1234yf

Le réfrigérant HFC (hydrofluorocarbures) est la troisième génération de réfrigérants fluorés. Reconnus comme potentiel d'appauvrissement de la couche d'ozone (ODP) et potentiel de réchauffement planétaire (GWP), ils représentent une alternative plus verte au CFC et au HCFC. Les réfrigérants de ce groupe sont applicables aux installations de réfrigération et aux unités de climatisation conçues spécifiquement pour leur utilisation. De plus, ils peuvent servir de remplacements directs pour les CFC et HCFC plus anciens.

Le groupe HFC comprend les produits suivants:

R23
R32
R134a
R404A
R407A
R407C
R407F (PERFORMAX LT)
R410A
R417A (ISCEON M059)
R422A (ISCEON M079)
R422D (ISCEON M029)
R423A (ISCEON 39TC)
R424A (RS-44)
R427A (Forane 427A)
R428A (RS-52)
R434A (RS-45)
R437A (ISCEON M049Plus)

R438A (ISCEON M099)

R442A (RS-50)

R449A (OPTEON XP40)

R507A

R508B (SUVA 95)

ISCEON M089

R1234yf





Picture5 Mbsm Dot Pro : www.mbsm.pro

**HERMETIC , AW5524EK
 , Compressor , 20,950 BTU
 , 230/1/60 R-22 , : 220-240
 V/50 Hz. , 1 Phase ,
 1.7458333333 TON**

written by Lilianne | 28 April 2020
 Electrical : 220-240 V/50 Hz. 1 Phase
 Nominal Performance
 Capacity 6,140 / – Watts

20,950 / – BTU/Hr

5,280 / – Kcal/Hr

Power Input 2,089 / – Watts

Locked Rotor Amps 51.30 / – Amps

Max Continuous Current – / – Amps

Rated Load Amps 9.64 / – Amps

COP 2.94 / – Watts / Watts

EER 10.03 / – BTU/W-Hr

Testing Conditions

Condensing Temperature 54.40 °C 129.9 °F

Evaporating Temperature 7.20 / – °C 45.0 / – °F

Liquid Temperature 46.10 °C 115.0 °F

Return Gas Temperature 35.00 °C 95.0 °F

Ambient Temperature 35.00 °C 95.0 °F

Application

Evaporating Temp. Range HBP, A/C @ 0.00 ° C to 13.00 ° C
(32.0° F to 55.4° F)

Heat Pump -23.30 ° C to 13.00 ° C
(-9.9° F to 55.4° F)

Refrigerant R22

Refrigerant Flow Control Capillary Tube

Compressor Cooling Fan

Compressor and Motor data

Compressor Type Reciprocating

Displacement 43.10 cc.

Oil Type Mineral Oil

Oil Charge 964 cc.

Motor Type P.S.C ; 2 Pole 2,850 / – r/m

Voltage Range 198-264/- Volts 50/- Hz.

Winding Resistance at 25 ° C

Start 2.52 Ohms

Run 1.24 Ohms

Weight with Oil 27.72 Kg.

Weight with Oil and Accessories 28.05 Kg.

Electrical Components

Motor Protector

Type Internal Overload

Model Number 4042KGE661-2

Open / Close 125-135 / 50-70 ° C

1st Cycle trip at 25 ° C 50.00 Amps(main) 30.00 Amps(start)

Motor Starter

Type Potential Relay

Model Number 4043KGE681-4(RVA3G6D)

Pick Up (max.) 180.00-195.00 Volts

Drop Out (min.) 40.00-90.00 Volts

Terminal Cover KGM 901-3

Start Capacitor 88-106 μ F 330 VAC.

Disch Resistor for Start Cap –

Run Capacitor 45 μ F 370/440 VAC.

Mounting Kit

Rubber Grommet 4007KGM905-2

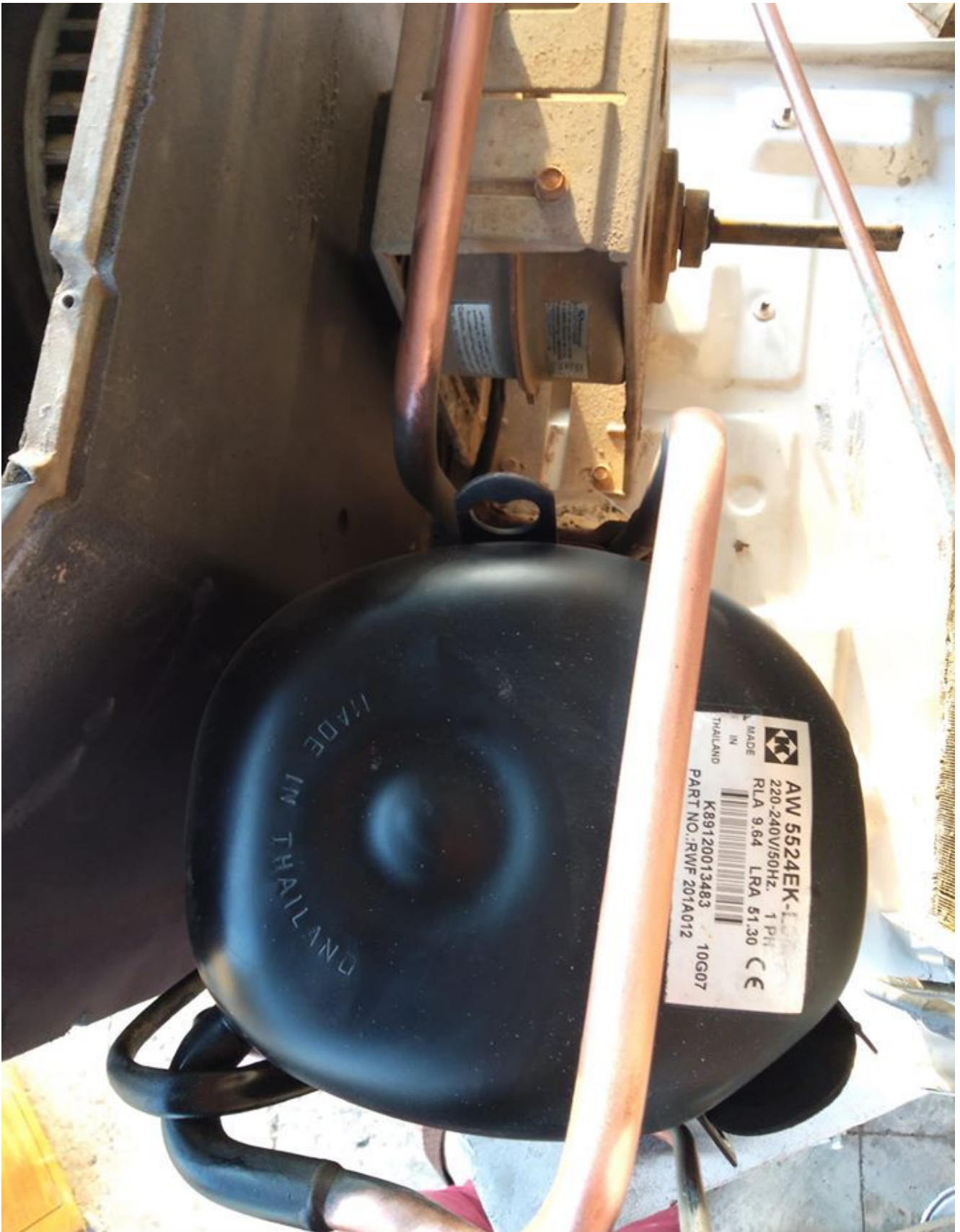
Sleeve Grommet 4023KGM903-2

Washer –

Since we are constantly improving our product , the specification are subject to change without notice.

REV. DATE C / N No.

ECN 01-04-14 ECN 0515/13





DOCUMENTATION PDF

Mbsm_dot_pro_private_pictureAW5524EKTélécharger

**D110C24GAX5 , PANASONIC
,RSIR, Serie D, Reciprocating
,Compressors , 298 w , 1/3 HP
, R134a ,220v 50Hz**

written by Lilianne | 28 April 2020

| displacement cm ³ | W (cooling) | BTU/HR | K Cal/hr | HP | Model | number |
|---------------------------------|----------------|--------|-------------|-----|-------------|--------|
| 5.1 | 135 | 461 | 116 | 1/6 | D51C10RAW5 | 1 |
| 5.1 | 135 | 461 | 116 | 1/6 | D51C90RAW5 | 2 |
| 5.7 | 141 | 481 | 121 | 1/6 | D57C10RAW5 | 3 |
| 5.7 | 141 | 481 | 121 | 1/6 | D57C13RAX5 | 4 |
| 6.6 | 160 | 546 | 138 | 1/5 | D66C10RAW5 | 5 |
| 6.6 | 151 | 515 | 130 | 1/5 | D66C10RAX5 | 6 |
| 7.7 | 186 | 635 | 160 | 1/5 | D77C10RAW5 | 7 |
| 7.7 | 186 | 635 | 160 | 1/5 | D77C10RAX5 | 8 |
| 9.1 | 227 | 774 | 195 | 1/4 | D91C10RAW5 | 9 |
| 9.1 | 227 | 774 | 195 | 1/4 | D91C10RAX5 | 10 |
| 11.0 | 298 | 1017 | 256 | 1/3 | D51C21RAX5 | 11 |
| 11.0 | 298 | 1017 | 256 | 1/3 | D110C21RA25 | 12 |
| 11.0 | 298 | 1017 | 256 | 1/3 | D110C21RBX5 | 13 |
| 11.0 | 298 | 1017 | 256 | 1/3 | D110C24GAX5 | 14 |



Private Picture Copyright : WWW.MBSM.PRO

D110C24GAX5 , PANASONIC ,RSIR, Serie D, Reciprocating
,Compressors , 298 w , 1/3 HP , R134a ,220v 50Hz

**Compresseurs Embraco,
,EMU70HLC , R134a, 220 V,
50Hz, 1/5 HP, 149 watts , 180
mL**

written by Lilianne | 28 April 2020

Compresseurs Embraco, ,EMU70HLC , R134a, 220 V, 50Hz, 1/5 HP,
149 watts , 0.17 kW (0.2214 BHP) ,180 mL

Austria , RECIPROCATING , COMPRESSOR , SECOP , HXD30AA , 0.04 1/25 HP , R600a , 220v 50Hz

written by Lilianne | 28 April 2020

Austria , RECIPROCATING , COMPRESSOR , SECOP , 0.04 HP , HXD30AA ,
1/25 HP , R600a , 220v 50Hz

Tableau de conversion d'unités

written by Lilianne | 28 April 2020

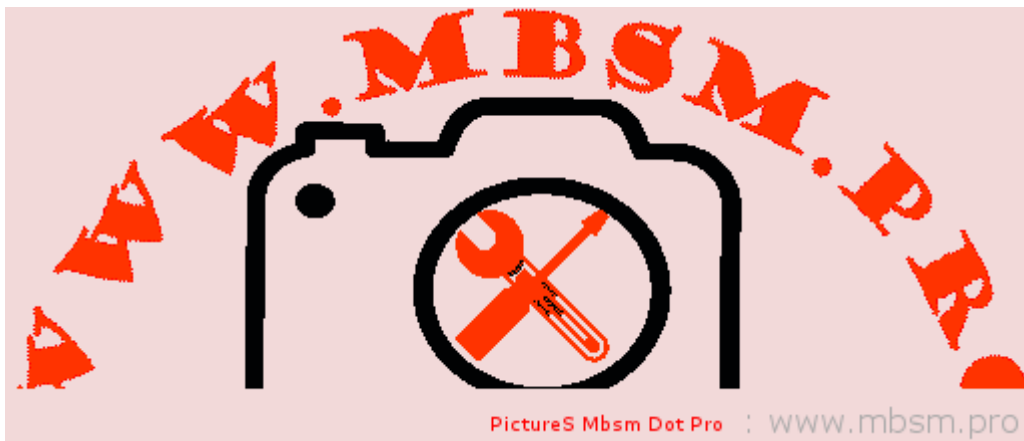


Tableau de conversion d'unités