

# Compressor, LG, GK113P, R410A, 220-240V, 50Hz, 9600 Btu / h, capacitor 35 uF, 1Piston

Category: compressor

written by Lilianne | 8 December 2021

| Refrigerant | Type    | Frequency | Voltage                | Series | Model  | Cooling | Capacity | Input | EER | COP  | Test Condition |
|-------------|---------|-----------|------------------------|--------|--------|---------|----------|-------|-----|------|----------------|
| Btu/hr      | Watts   | Watts     | Btu/W.hr               | W/W    |        |         |          |       |     |      |                |
| R410A       | 1piston | 50Hz      | 1 $\Phi$ ,<br>220/240V | GA     | GA066P | 5,270   | 1,544    | 555   | 9.5 | 2.78 | ASHRAE         |
| GA080P      | 6,550   | 1,919     | 668                    | 9.81   | 2.87   | ASHRAE  |          |       |     |      |                |
| GA086P      | 7,050   | 2,066     | 735                    | 9.59   | 2.81   | ASHRAE  |          |       |     |      |                |
| GAB         | GAB040P | 3,130     | 917                    | 340    | 9.2    | 2.7     | ASHRAE   |       |     |      |                |
| GAB042P     | 3,410   | 999       | 355                    | 9.6    | 2.81   | ASHRAE  |          |       |     |      |                |
| GAB048P     | 3,985   | 1,168     | 403                    | 9.9    | 2.9    | ASHRAE  |          |       |     |      |                |
| GAB072P     | 5,950   | 1,744     | 590                    | 10.08  | 2.95   | ASHRAE  |          |       |     |      |                |
| GK          | GK086P  | 6,900     | 2,022                  | 726    | 9.5    | 2.79    | ASHRAE   |       |     |      |                |
| GK094P      | 7,700   | 2,256     | 794                    | 9.7    | 2.84   | ASHRAE  |          |       |     |      |                |
| GK102P      | 8,250   | 2,418     | 841                    | 9.81   | 2.87   | ASHRAE  |          |       |     |      |                |
| GK113P      | 9,000   | 2,637     | 914                    | 9.85   | 2.89   | ASHRAE  |          |       |     |      |                |
| GK120P      | 9,700   | 2,842     | 1,010                  | 9.6    | 2.81   | ASHRAE  |          |       |     |      |                |
| GK141P      | 11,350  | 3,326     | 1,170                  | 9.7    | 2.84   | ASHRAE  |          |       |     |      |                |
| GK151P      | 12,200  | 3,575     | 1,245                  | 9.8    | 2.87   | ASHRAE  |          |       |     |      |                |
| GKS         | GKS094P | 7,700     | 2,256                  | 755    | 10.2   | 2.99    | ASHRAE   |       |     |      |                |
| GKS108P     | 8,700   | 2,549     | 838                    | 10.38  | 3.04   | ASHRAE  |          |       |     |      |                |
| GKS113P     | 8,750   | 2,564     | 920                    | 9.51   | 2.79   | ASHRAE  |          |       |     |      |                |
| GKS134P     | 10,900  | 3,194     | 1,100                  | 9.91   | 2.9    | ASHRAE  |          |       |     |      |                |
| GKS141P     | 11,500  | 3,370     | 1,116                  | 10.3   | 3.02   | ASHRAE  |          |       |     |      |                |
| GKS151P     | 12,230  | 3,584     | 1,245                  | 9.82   | 2.88   | ASHRAE  |          |       |     |      |                |
| GJ          | GJ176P  | 14,400    | 4,220                  | 1,485  | 9.7    | 2.84    | ASHRAE   |       |     |      |                |
| GJ196P      | 16,500  | 4,835     | 1,705                  | 9.68   | 2.84   | ASHRAE  |          |       |     |      |                |
| GJ208P      | 17,500  | 5,128     | 1,750                  | 10     | 2.93   | ASHRAE  |          |       |     |      |                |
| GJ222P      | 18,500  | 5,421     | 1,867                  | 9.91   | 2.9    | ASHRAE  |          |       |     |      |                |
| GJ230P      | 19,100  | 5,597     | 1,949                  | 9.8    | 2.87   | ASHRAE  |          |       |     |      |                |



Private Picture Copyright : [WWW.MBSM.PRO](http://WWW.MBSM.PRO)

Mbsm\_dot\_pro\_private\_PDF\_gk113pTélécharger

---

# Compressor, LX110LQJG, Refrigeration freezer, KF-P8903HLP, 1/3HP, 260W, R134A, 180G, Refrigerator Amerrecain

Category: compressor

written by Lilianne | 8 December 2021

1 Reciprocating & Linear Compressor Compressor Technology for Refrigerator  
2 01 LG Compressor Model Variety In order to offer you a various product portfolio of refrigerator compressor, our range covers constant and inverter of Reciprocating and Linear compressor with low pressure as well as high pressure. It enables to provide you with full support in all application of your needs. Customer Support LG compressors promise to deliver a satisfaction level for all your business stage from research, development to the spec-in that exceeds our customers expectations, and strives to provide the highest value to our customers through a fast, accurate and differentiated service & solution as your business partner. Technology LG compressors are continuously evolving group of high-precision machining and assembly technologies from accumulated techniques for generating sustainable world best compressor. Especially we are enabling to give our customers technical support in order to provide best performance compressor through design mechanism and produce key technology of compressor, inverter motor and drive that makes you to achieve optimized product. Quality With the product quality and safety evaluation system that performs basic quality and safety evaluation for products at every production stage. Under the quality gate system, all our products undergo a safety check at each quality gate based on a checklist, preventing shipments of products with quality or safety issues. We also have achieved recognition our quality and sustainability from Europe, North America, China and Japan. Why LG Compressor? LG Compressor 01 3 02 LG Compressor LG Compressor 03 Brief History & Factory Milestones & Production Sites China Qinhuangdao (Casting) Tianjin (Rotary, Scroll) Nanjing ( ) Taizhou (Reciprocating) 13 Production Refrigerator Compressor Production Air-conditioner Compressor Production Compressor Division Compressor Sales 100 Million Units Establishment of C&M Business Unit 2011 Korea (HQ) Changwon (Reciprocating, Linear, Rotary, Scroll, ) India Noida (Reciprocating) Thailand Rayong (Rotary)  
4 04 LG Compressor LG Compressor 05 Contents Why LG Compressor? Brief History & Factory Reciprocating Compressor – Product Range – Nomenclature – Specification I Constant speed – Specification I Inverter – Specification I Controller – Attached / Detached Controller – Mounting – Packing & Container Stuffing Quantity Linear Compressor – Product Range – Nomenclature – Specification – Wiring Diagram – Accessory Part – Packing & Container Stuffing Quantity  
5 08 LG Reciprocating Compressor LG Reciprocating Compressor 09 Nomenclature Product type B : BLDC C : Constant Speed F : Linear Size C : Compact L : Large M : Medium S : Small Generation code (A-Z) B M A 098 N A M V Operating type Rated voltage & frequency Code Voltage Hz Code Voltage Hz A /60 Q 110~ B 50/60 R 110~ C D 60 E ~ S T Code Voltage G RSIR M RSCR F CSIR H CSR K RSIR N RSCR P CSIR R CSR V Inverter 200~ ~ F J 60 U 115~ K M ~240 50/60 L N 115~127 50/60 P Improvement order A, B, C : Cu Wire H, J : Al Wire R134a TS Capacity EER COP TS22LHEG RSIR ~240/ ASHRAE TS22LHAG RSIR 110/ ASHRAE TS24LATG RSIR ~240/ ASHRAE

TS24LJJG RSIR / ASHRAE TS24LHJG RSIR / ASHRAE TS24LAAG RSIR 110/ ASHRAE TS24LHAG RSIR 110/ ASHRAE TS24LHTG RSIR ~240/ ASHRAE TS22LHAG RSIR 110/ ASHRAE TS22LHDG RSIR / ASHRAE TS22LHCG RSIR 115/ ASHRAE TS24LADG RSIR / ASHRAE TS24LATG RSIR / ASHRAE TS24LAAG RSIR 100/ ASHRAE TS24LHAG RSIR 110/ ASHRAE TS24LHUG RSIR 115~127/ ASHRAE TS24LAFG RSIR 127/ ASHRAE TS24LBDM RSCR / ASHRAE TS24LACG RSIR 115/ ASHRAE TS24LHDG RSIR / ASHRAE TS24LHTG RSIR / ASHRAE Note 2 : condition Evaporating temperature Condensing temperature Ambient temperature TS Capacity Displacement (ex : 098=9.8cc/rev) Refrigerants L : R134a H : R134a HBP N : R600a 6 10 LG Reciprocating Compressor LG Reciprocating Compressor 11 R134a NS Capacity EER COP NS24LBEG RSIR ~240/ ASHRAE 157 NS24LABG RSIR / ASHRAE 147 NS24LAEG RSIR ~240/ ASHRAE 147 NS24LABG RSIR / ASHRAE 147 NS24LBCG RSIR 115/ ASHRAE 157 NS24LBCM RSCR 115/ ASHRAE 157 NS24LADG RSIR / ASHRAE 147 NS24LACG RSIR 115/ ASHRAE 147 NS30LABG RSIR / ASHRAE 147 NSA24LACG RSIR 115/ ASHRAE 147 NS30LAEG RSIR ~240/ ASHRAE 147 NS30LABG RSIR / ASHRAE 147 NS36LABG RSIR / ASHRAE 157 NS30LACG RSIR 115/ ASHRAE 147 NS30LACM RSCR 115/ ASHRAE 147 NS36LAEG RSIR ~240/ ASHRAE 157 NSA30LACG RSIR 115/ ASHRAE 147 NS36LACG RSIR 115/ ASHRAE 157 NS36LADG RSIR / ASHRAE 157 NS36LADM RSCR / ASHRAE 157 NS36LABG RSIR / ASHRAE 157 NSA36LACG RSIR 115/ ASHRAE 157 R134a CMA Capacity EER COP CMA042LHJG RSIR / ASHRAE 171 CMA042LHDM RSCR / ASHRAE 171 CMA042LHCG RSIR 115/ ASHRAE 171 CMA042LHCM RSCR 115/ ASHRAE 171 CMA042LHUM RSCR 115~127/ ASHRAE 171 CMA053LHEG RSIR ~240/ ASHRAE 171 CMA053LHEM RSCR ~240/ ASHRAE 171 CMA057LHEM RSCR ~240/ ASHRAE 171 CMA057LHEG RSIR ~240/ ASHRAE 171 CMA057LAEM RSCR ~240/ ASHRAE 171 CMA053LHDG RSIR / ASHRAE 171 CMA053LHCG RSIR 115/ ASHRAE 171 CMA053LHCM RSCR 115/ ASHRAE 171 CMA062LHEG RSIR ~240/ ASHRAE 171 CMA062LHEM RSCR ~240/ ASHRAE 171 CMA069LAEM RSCR ~240/ ASHRAE 171 CMA069LBEM RSCR ~240/ ASHRAE 171 CMA069LHEM RSCR ~240/ ASHRAE 171 CMA075LHDM RSCR / ASHRAE 171 Note 2 : condition Evaporating temperature Condensing temperature Ambient temperature Note 2 : condition Evaporating temperature Condensing temperature Ambient temperature NS CMA 7 12 LG Reciprocating Compressor LG Reciprocating Compressor 13 R134a MA Capacity EER COP MA42LPJG RSIR / ASHRAE 172 MA42LMJM RSCR / ASHRAE 172 MA42LMJG RSIR / ASHRAE 172 MA42LHJM RSCR / ASHRAE 172 MA45LDJG RSIR / ASHRAE 172 MA45LCJG RSIR / ASHRAE 172 MA45LJJM RSCR / ASHRAE 172 MA45LHJM RSCR / ASHRAE 172 MA53LABM RSCR / ASHRAE 172 MA53LATG RSIR ~240/ ASHRAE 172 MA53LAJM RSCR / ASHRAE 172 MA53LJJG RSIR / ASHRAE 172 MA53LBJG RSIR / ASHRAE 172 MA53LAJG RSIR / ASHRAE 172 MA53LAEG(AL) RSIR ~240/ ASHRAE 180 MA53LAEM(AL) RSCR ~240/ ASHRAE 180 MA57LBJG RSIR / ASHRAE 172 MA57LABM RSCR / ASHRAE 180 MA57LAEG RSIR ~240/ ASHRAE 172 MA57LAEM(AL) RSCR ~240/ ASHRAE 180 MA57LBEG(AL) RSIR ~240/ ASHRAE 180 MA57LBJG RSIR / ASHRAE 177 MA57LJJG RSIR / ASHRAE 177 MA53LHEM RSCR ~240/ ASHRAE 172 MA57LDJM RSCR / ASHRAE 177 MA53LBCG RSIR 115/ ASHRAE 172 MA53LBCM RSCR 115/ ASHRAE 172 MA62LCEG RSIR ~240/ ASHRAE 180 MA62LCEM RSCR ~240/ ASHRAE 180 MA62LDEG RSIR ~240/ ASHRAE 172 MA53LAUG RSIR 115~127/ ASHRAE 172 MA62LBJG RSIR / ASHRAE 177 MA62LJJG RSIR / ASHRAE 177 MA62LDJM RSCR / ASHRAE 177 MA62LBEG RSIR ~240/ ASHRAE 177 MA62LCEG RSIR ~240/ ASHRAE 177 MA53LADG RSIR / ASHRAE 172 MA53LADM RSCR / ASHRAE 172 MA53LCCM RSCR 115/ ASHRAE 172 MA53LABM RSCR / ASHRAE 172 MA69LKEM RSCR ~240/ ASHRAE 177 MA69LJEG RSIR ~240/ ASHRAE 177 MA69LJEP CSIR ~240/ ASHRAE 177 MA69LHEM RSCR ~240/ ASHRAE 177 MA69LHEG RSIR ~240/ ASHRAE 177 R134a MA / MC MA MC LQ Capacity EER COP MA69LHEP CSIR ~240/ ASHRAE 177 MA57LADM RSCR / ASHRAE 180 MA57LABM RSCR / ASHRAE 180 MA69LDEG RSIR ~240/ ASHRAE 172 MA69LCEG RSIR ~240/ ASHRAE 180 MA69LCEM RSCR ~240/ ASHRAE 180 MA69LAEM RSCR

~240/ ASHRAE 177 MA72LBJG RSIR / ASHRAE 177 MA72LHEM RSCR ~240/ ASHRAE 177 MA72LKEM RSCR ~240/ ASHRAE 177 MA72LBEM RSCR ~240/ ASHRAE 177 MA72LJEP CSIR ~240/ ASHRAE 177 MA72LJEG RSIR ~240/ ASHRAE 177 MA72LHEG RSIR ~240/ ASHRAE 177 MA88LAEP CSIR ~240/ ASHRAE 177 MA98LAEM RSCR ~240/ ASHRAE 182 MC53LBEM RSCR ~240/ ASHRAE 172 MC57LAEM RSCR ~240/ ASHRAE 177 MC57LBEM RSCR ~240/ ASHRAE 177 MA57LBJM RSCR / ASHRAE 177 LQ75LAEM RSCR ~240/ ASHRAE 203 LQ86LAEM RSCR ~240/ ASHRAE 203 Remark LQ69LAUM RSCR 115~127/ ASHRAE 203 E-PTC LQ69LAUM RSCR 115~127/ ASHRAE 203 LQ69LAUH RSCR 115~127/ ASHRAE 203 E-PTC LQ69LADM RSCR / ASHRAE 203 LQ75LAUM RSCR 115~127/ ASHRAE 203 E-PTC LQ100LAJH CSR / ASHRAE 203 LQ86LADM RSCR / ASHRAE 203 Note 2 : condition Evaporating temperature Condensing temperature Ambient temperature LQ

8 14 LG Reciprocating Compressor LG Reciprocating Compressor 15 R134a LX Capacity EER COP LX67LABM RSCR / ASHRAE 200 LX67LHBM RSCR / ASHRAE 203 LX72LATG RSIR ~240/ ASHRAE 200 LX72LBEG RSIR ~240/ ASHRAE 200 LX72LAAM RSCR 110/ ASHRAE 200 LX72LATF CSIR ~240/ ASHRAE 200 LX72LATH CSR ~240/ ASHRAE 200 LX72LAEM RSCR ~240/ ASHRAE 200 LX72LHJH CSR / ASHRAE 203 LX72LHJM RSCR / ASHRAE 203 LX72LHJF CSIR / ASHRAE 203 LX67LAQG RSIR 100~115/ ASHRAE 200 LX86LABM RSCR / ASHRAE 203 LX86LBEG RSIR ~240/ ASHRAE 200 LX86LBEF CSIR ~240/ ASHRAE 200 LX86LCEG RSIR ~240/ ASHRAE 203 LX86LHEM RSCR ~240/ ASHRAE 203 LX86LHJF CSIR / ASHRAE 203 LX67LABM RSCR / ASHRAE 200 LX67LAFM RSCR 127/ ASHRAE 200 LX67LHBM RSCR / ASHRAE 203 LX86LPBP CSIR / ASHRAE 203 LX86LAEG RSIR ~240/ ASHRAE 203 LX72LATG RSIR / ASHRAE 200 LX72LBQG RSIR 100~115/ ASHRAE 200 LX72LAAM RSCR 110/ ASHRAE 200 LX72LATF CSIR / ASHRAE 200 LX72LATH CSR / ASHRAE 200 LX72LHQF CSIR 100~115/ ASHRAE 203 LX95LAAH CSR 110/ ASHRAE 203 LX95LABH CSR / ASHRAE 203 LX86LACM RSCR 115/ ASHRAE 203 LX86LAQM RSCR 100~115/ ASHRAE 203 LX86LPBP CSIR / ASHRAE 203 LX86LADM RSCR / ASHRAE 203 LX86LABM RSCR / ASHRAE 203 LX86LPDP CSIR / ASHRAE 200 LX110LAJH CSR /50 2 1, ASHRAE 203 LX110LAJM RSCR /50 2 1, ASHRAE 203 LX110LAEH CSR ~240/50 2 1, ASHRAE 203 LX110LAEM RSCR ~240/50 2 1, ASHRAE 203 LX R134a LX 1 Capacity EER COP LX110LAAH CSR 110/50 2 1, ASHRAE 203 LX110LQJG RSIR /50 2 1, ASHRAE 200 LX110LHJH CSR /50 2 1, ASHRAE 203 LX110LAJM RSCR / , ASHRAE 203 LX95LAAH CSR 110/ , ASHRAE 203 LX95LADH CSR / , ASHRAE 203 LX95LABH CSR / , ASHRAE 203 LX95LBQH CSR 100~115/ , ASHRAE 203 LX95LAFH CSR 127/ , ASHRAE 203 LX95LAQH CSR 100~115/ , ASHRAE 203 LX110LAAH CSR 110/ , ASHRAE 203 LX110LPDP CSIR / , ASHRAE 203 LX125LAJM RSCR / , ASHRAE 203 Note 2 : condition Evaporating temperature Condensing temperature Ambient temperature

9 16 LG Reciprocating Compressor LG Reciprocating Compressor 17 R600a NS CSA Capacity EER COP NS36NAAG RSIR 110/ ASHRAE 157 NS36NAAG RSIR 110/ ASHRAE 157 NSA43NACM RSCR 115/ ASHRAE 157 NSA43NACG RSIR 115/ ASHRAE 157 CSA043NHEG RSIR ~240/ ASHRAE 167 CSA043NHAG RSIR 110/ ASHRAE 167 CSA047NHEG RSIR ~240/ ASHRAE 167 CSA043NHAG RSIR 110/ ASHRAE 167 CSA053NHEG RSIR ~240/ ASHRAE 167 CSA057NHEG RSIR ~240/ ASHRAE 167 CSA057NJEG RSIR ~240/ ASHRAE 157 CSA062NHAG RSIR 110/ ASHRAE 167 CSA062NHEG RSIR ~240/ ASHRAE 167 CSA057NHCG RSIR 115/ ASHRAE 167 CSA069NHAG RSIR 110/ ASHRAE 167 CSA069NHEG RSIR ~240/ ASHRAE 167 CSA062NHAG RSIR 110/ ASHRAE 167 CSA075NJEG RSIR ~240/ ASHRAE 157 CSA075NHEG RSIR ~240/ ASHRAE 167 CSA075NHEM RSCR ~240/ ASHRAE 167 CSA069NHCG RSIR 115/ ASHRAE 167 CSA069NHAG RSIR 110/ ASHRAE 167 CSA075NHCG RSIR 115/ ASHRAE 167 R600a CMA Capacity EER COP Remark CMA057NAAG RSIR 110/ ASHRAE 171 CMA057NAEM RSCR ~240/ ASHRAE 171 CMA057NAEM RSCR ~240/ ASHRAE 171 E-PTC CMA057NHEM RSCR ~240/ ASHRAE 171 CMA057NHEM RSCR ~240/ ASHRAE 171 E-PTC CMA062NAEM RSCR ~240/ ASHRAE 171 CMA062NAEM RSCR ~240/ ASHRAE 171 E-PTC CMA062NHEM RSCR ~240/ ASHRAE 171

CMA062NHEM RSCR ~240/ ASHRAE 171 E-PTC CMA057NAAG RSIR 110/ ASHRAE 171  
CMA069NJEM RSCR ~240/ ASHRAE 171 CMA069NAEM RSCR ~240/ ASHRAE 171 CMA069NAEM  
RSCR ~240/ ASHRAE 171 E-PTC CMA069NHEM RSCR ~240/ ASHRAE 171 CMA069NHEM RSCR  
~240/ ASHRAE 171 E-PTC CMA069NHAM RSCR 110/ ASHRAE 171 CMA075NAEM RSCR ~240/  
ASHRAE 171 CMA075NAEM RSCR ~240/ ASHRAE 171 E-PTC CMA075NHEM RSCR ~240/ ASHRAE  
171 CMA075NHEM RSCR ~240/ ASHRAE 171 E-PTC CMA075NHAM RSCR 110/ ASHRAE 171  
CMA069NHAM RSCR 110/ ASHRAE 171 CMA082NHEM RSCR ~240/ ASHRAE 171 CMA082NHEM RSCR  
~240/ ASHRAE 171 E-PTC CMA082NJEG RSIR ~240/ ASHRAE 171 CMA082NAEM RSCR ~240/  
ASHRAE 171 Note 2 : condition Evaporating temperature Condensing temperature  
Ambient temperature Note 2 : condition Evaporating temperature Condensing  
temperature Ambient temperature NS / MSA / CSA CMA  
10 18 LG Reciprocating Compressor LG Reciprocating Compressor 19 R600a CMA  
Capacity EER COP Remark CMA082NAEM RSCR ~240/ ASHRAE 171 E-PTC CMA089NHEM RSCR  
~240/ ASHRAE 171 CMA089NHEM RSCR ~240/ ASHRAE 171 E-PTC CMA089NJEG RSIR ~240/  
ASHRAE 171 CMA075NHAM RSCR 110/ ASHRAE 171 CMA089NAEM RSCR ~240/ ASHRAE 171  
CMA089NAEM RSCR ~240/ ASHRAE 171 E-PTC CMA089NBEM RSCR ~240/ ASHRAE 171  
CMA098NJEM RSCR ~240/ ASHRAE 171 CMA098NAEM RSCR ~240/ ASHRAE 171 CMA098NAEM  
RSCR ~240/ ASHRAE 171 E-PTC CMA098NJEG RSIR ~240/ ASHRAE 171 CMA098NHEM RSCR  
~240/ ASHRAE 171 CMA098NHEM RSCR ~240/ ASHRAE 171 E-PTC CMA098NJEM RSCR ~240/  
ASHRAE 171 CMA089NHDM RSCR / ASHRAE 171 CMA089NHDM RSCR / ASHRAE 171 E-PTC  
CMA110NAEM RSCR ~240/ ASHRAE 171 CMA110NAEM RSCR ~240/ ASHRAE 171 E-PTC  
CMA110NAEM RSCR ~240/ ASHRAE 171 CMA110NAEM RSCR ~240/ ASHRAE 171 CMA098NARM  
RSCR 110~127/ ASHRAE 171 CMA098NADM RSCR / ASHRAE 171 CMA121NAEM RSCR ~240/  
ASHRAE 171 CMA121NAEM RSCR ~240/ ASHRAE 171 CMA110NADM RSCR / ASHRAE 171 R600a  
MB MQ LQ Capacity EER COP MB62NJEG RSIR ~240/ ASHRAE 172 MB82NAEM RSCR ~240/  
ASHRAE 177 MB82NJEG RSIR ~240/ ASHRAE 177 MB82NJEM RSCR ~240/ ASHRAE 177  
MB98NJEG RSIR ~240/ ASHRAE 177 MQ88NAEM RSCR ~240/ ASHRAE 180 MQ98NAJH CSR /  
ASHRAE 180 MQ98NAEM RSCR ~240/ ASHRAE 180 Remark LQ119NAEM RSCR ~240/ ASHRAE 203  
E-PTC LQ119NAEM RSCR ~240/ ASHRAE 203 LQ125NAEM RSCR ~240/ ASHRAE 203 LQ140NAEM  
RSCR ~240/ ASHRAE 203 LQ119NAQM RSCR 100~115/ ASHRAE 203 LQ140NAEM RSCR ~240/  
ASHRAE 203 LQ140NAEH CSR ~240/ ASHRAE 203 LQ140NAEM RSCR ~240/ ASHRAE 203 E-PTC  
Note 2 : condition Evaporating temperature Condensing temperature Ambient  
temperature Note 2 : condition Evaporating temperature Condensing temperature  
Ambient temperature CMA MB / MQ LQ  
11 20 LG Reciprocating Compressor LG Reciprocating Compressor 21 Application :  
HBP Application : HBP R134a CMA MA Capacity EER COP CMA042HHDM RSCR / , ASHRAE  
161 CMA053HHDM RSCR / , ASHRAE 161 CMA062HAEM RSCR ~240/ , ASHRAE 171 CMA062HHDM  
RSCR / , ASHRAE 171 CMA075HAEM RSCR ~240/ , ASHRAE 171 CMA075HADM RSCR /60 0 2,  
ASHRAE 171 CMA089HADM RSCR / , ASHRAE 171 MA42HJEP CSIR ~240/ , ASHRAE 172  
MA53HJEF CSIR ~240/ , ASHRAE 172 MA53HAEF CSIR ~240/ , ASHRAE 172 MA62HAEG RSIR  
~240/ , ASHRAE 177 MA62HAEF CSIR ~240/ , ASHRAE 177 MA72HAEP CSIR ~240/ , ASHRAE  
177 Note 2 : condition Evaporating temperature Condensing temperature Ambient  
temperature ASHRAE 7.2 C 54.4 C 35 C R134a LX Capacity EER COP LX72HAEP CSIR  
~240/ , ASHRAE 203 LX72HAEG RSIR ~240/ , ASHRAE 203 LX72HPDP CSIR /60 0 2,  
ASHRAE 200 LX86HAEP CSIR ~240/ , ASHRAE 203 LX86HAEG RSIR ~240/50 5 2, ASHRAE  
203 LX86HPDP CSIR / , ASHRAE 200 LX110HAEP CSIR ~240/ ,613 1, ASHRAE 203  
LX110HAEM RSCR ~240/ ,772 1, ASHRAE 203 LX125HPJP CSIR / ,950 1, ASHRAE 203  
LX110HPDP CSIR / ,9 1, ASHRAE 200 LX110HACF CSIR 115/ ,129 1, ASHRAE 203  
LX125HPDP CSIR / ,764 1, ASHRAE 203 Note 2 : condition Evaporating temperature  
Condensing temperature Ambient temperature ASHRAE 7.2 C 54.4 C 35 C CMA MA LX



**تعویض فن کندانسور**







**LG**

**REFRIGERATOR-FREEZER**

**MODEL : KF-P8903HLP**

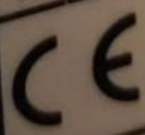
|                                     |                         |
|-------------------------------------|-------------------------|
| <b>RATING</b>                       | 220V ~ 50Hz             |
| <b>CLIMATE CLASS</b>                | T                       |
| <b>RATED CURRENT</b>                | 1.73A                   |
| <b>FREEZING CAPACITY</b>            | 12.0kg/24Hr             |
| <b>DEFROSTING INPUT</b>             | 260W                    |
| <b>RATED INPUT OF HEATER SHEATH</b> | 260W                    |
| <b>STORAGE/GROSS VOL. TOTAL</b>     | 538 ℓ / 606 ℓ           |
| <b>-FREEZER COMPARTMENT</b>         | 173 ℓ / 228 ℓ           |
| <b>-REFRIGERATOR COMPARTMENT</b>    | 365 ℓ / 378 ℓ           |
| <b>REFRIGERANT</b>                  | R134a 180g              |
| <b>INSULATION BLOWING GAS</b>       | CYCLOPENTANE            |
| <b>DIMENSIONS</b>                   | 894(W)x753(D)x1753(H)mm |



910WRKG00805

**MADE IN EUROPE**  
**SERIAL NO.**

TAB34634741





# تعویض پروانه فن





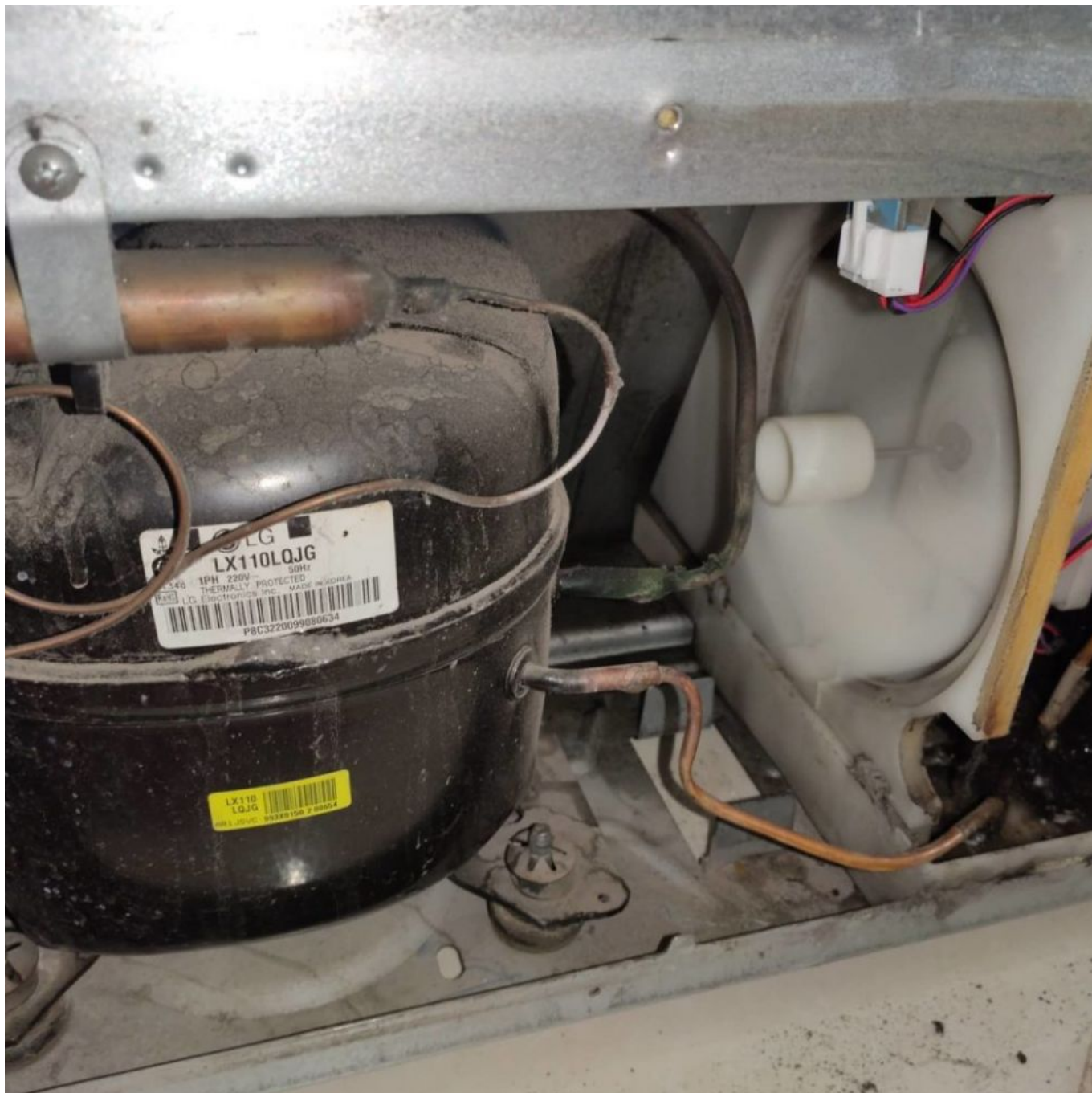
**LG**

**LX110LQJG**

R134a 1PH 220V ~ 50Hz  
THERMALLY PROTECTED  
RoHS LG Electronics Inc. MADE IN KOREA



P8C2220101310006



Private Picture Copyright : WWW.MBSM.PRO

compressor, R134a, AE4430Y-FZ,  
HERMÉTIQUE-TECUMSEH, 220-240V 50Hz,  
1/4HP++, HMBP, 1/3HP, 337W, AEZ4430Y

Category: compressor

written by Lilianne | 8 December 2021

Compressor Tecumseh L` Unite AEZ4430Y/AE4430Y, HBP – R134a, 220 – 240V, 50 Hz, 1 phase \*Warning – equivalent goods: AE4430Y will be delivered

Refrigerant: R134a

Power range(W): 701 – 1000 W  
Connecting size: 3/16"  
Suction: 1/4"  
Working area: HBP  
Design type: Hermetic  
Model series: AE  
Use with: Expansion/Capillary  
Power supply: 230 V  
Oil type: POE  
Engine type: CSIR  
Article condition: New  
Info: Oil filled  
Shipping weight: 12,20 Kg  
Contents: 1,00 Pieces  
Dimensions ( height ): 19,90 cm  
customs tariff number: 84143081  
Manufacturer: Tecumseh L` Unite  
Model: AEZ4430Y  
Stroke volume (cm3): 8,8  
Performance condition: +5 / +50 °C  
Power (W): 768  
Engine type: CSIR  
dbA @ 1m: 50  
Note: Fan cooling necessary  
Equipment: Start-Capacitor 50 uF / 250V  
Oil quantity (l): 0,35  
Compressor type: Piston  
Suction (inch): 1/4  
Discharge (inch): 3/16  
Alternative: AE4430Y



Private Picture Copyright: [WWW.MBSM.PRO](http://WWW.MBSM.PRO)

f  
Mbsm\_dot\_pro\_private\_PDF\_AEZ4430YTélécharger  
Compressor Tecumseh L` Unite AE4430Y/AEZ4430Y, HBP – R134a, 220 – 240V, 50 Hz, 1

phase, discharge: 8.02 cm<sup>3</sup>, oil type: POE, oil charge: 280 cm<sup>3</sup>, electrical equipment CSIR, cooling power: 702 W at +5 / +50 °C, connection: suction: 1/4 inch, discharge: 3/16 inch, sound level: 56 dBA, start capacitor: 50uF/250V, expansion device: capillary or with expansion valve, cooling: forced, height: 200 mm, weight: 9.7 kg



|  |        |  |                |  |          |  |                   |
|---|--------|---|----------------|--|----------|---|-------------------|
| CODE CD   | TYPE   | CODE CD   | TYPE           | CODE CD  | TYPE     | CODE CD   | TYPE              |
| FRD255  | ML60TB | FRD696  | FRD6CL         | VD6063   | NB6165GK | BTD2876   | AEZ4430Z          |
| FRD137  | GP14TB | -   | NL11MF         | -  | NE6210Z  | FRD464  | CAE4440Y          |
| VD6043  | GP12TB | FRD463  | FRG11-NL10MF   | SOMD1432   | NE6187Z  | -   | -                 |
| FRD256  | ML80TB | -   | NL7MLX         | -  | NE6181GK | BTD2742   | AEZ4440Z          |
| MED2302   | MP14TP | -   | -              | FRD158   | T6217GK  | FRD443  | CAE9470Z          |
| FRD257  | ML90TB | -   | -              | -  | NE6210GK | FRD442  | CAE4450Z          |
| PLD1803   | GL45TB | FRD333  | TL5G           | -  | BP6125H  | CHD2658   | THB4415Y          |
| ISD1007   | MR22FB | FRLD2643  | SC21CL         | SOMD17676  | T2180GK  | MED2261   | CAJ2440Z          |
| FRD665  | MX18FB | FRD271  | SC15CL         | -  | T2168GK  | PLD1781   | CAJ2428Z          |
| ITD281  | ML45TB | -   | -              | -  | NB6144GK | FRD254  | AEZ4425Z          |
| VD6041  | GL90TB | FRD128  | FR10G-NL8.4MF  | FRD130   | NE6170Z  | FRD501  | AEZ4430Y          |
| ITD284  | MP12TB | -   | SC10MLX        | FRD144   | NE9213GK | INF2116   | CAE9460Z          |
| -   | GP12FB | FRD463  | FR11G          | FRD140   | NE2121Z  | -   | AEZ2410Y          |
| FRD695  | MS34FB | -   | -              | FRD467   | N2212GK  | MARD1027  | CAJ2464Z          |
| -   | MX16TB | -   | SC15MLX        | FRD156   | T6220GK  | VD6062  | CAJ9480Z          |
| SOMD17024   | MX18TB | BTD2337   | SC18MLX        | FRD159   | T6222GK  | FRD444  | CAJ9510Z          |
| PLD1805   | GL80TB | SOMD10205   | FR7.5G-NL7.3MF | -  | NE6160Z  | FXD1075   | AEZ4425Y          |
| -   | GL80PB | SOMD10205   | FR7.5G-NL7.3MF | -  | NE5160Z  | -   | -                 |
| GVD66397  | MP12FB | ICD6006   | SC12CL         | FRLD2524   | T2155GK  | -   | CAE2420Z          |
| PLD1807   | GL60TB | FRLD2624  | NL6.1MF        | IAD1434  | NB6144Z  | SOMD17679   | THB4419Y-THB4422Y |
| VD6022  | GL90AA | -   | NLE9F          | FRD142   | NB2118Z  | -   | AEZ2380Y          |

|  |        |  |                   |  |           |  |                       |
|---|--------|---|-------------------|--|-----------|---|-----------------------|
| CODE CD   | TYPE   | CODE CD   | TYPE              | CODE CD  | TYPE      | CODE CD   | TYPE                  |
| -   | GL40PB | -   | -                 | FRD 135  | BF5132H   | -   | -                     |
| MED2303   | MX21FB | VD6019  | SC18CL            | FRD 164  | T2178GK   | PLD1782   | CAJ2432Z              |
| -   | MS26FB | -   | GS26CLX           | FRD 154  | NJ2192GK  | PLD1784   | CAJ2446Z              |
| VD6040  | L76TN  | -   | -                 | -  | NE6181E   | -   | AEZ4440E              |
| IAD 1475  | ML80FB | IAD1448   | FR8.5CL           | FRD157   | NE2125GK  | ARD3991   | AEZ2415Z              |
| GVD66397  | MP12FB | FRD475  | SC10CL            | FRD146   | NE2134GK  | -   | CAE2417Z-<br>CAE2420Z |
| GVD19540  | ML90FB | FRD475  | SC10CL            | IAD1426  | NEK2134GK | -   | CAE2417Z-<br>CAE2420Z |
| ISD 1007  | MR22FB | FRLD2643  | SC21CL            | IAD1383  | T2180GJ   | MED2261   | CAJ2440Z              |
| FRD257  | ML90TB | -   | -                 | FRD 145  | NEK6210GK | FRD442  | CAE4450Z              |
| ITD284  | MP12TB | -   | SC12MLX           | FRD 144  | NE9213GK  | INFD2116  | CAE9460Z              |
| -   | MR22TB | -   | GS21MLX           | FRD259   | NJ9226GK  | FRD476  | CAJ9513Z              |
| IAD 1384  | MS26TB | -   | GLS26MLX          | IAD 1461   | NJ9232GK  | ITD955  | CAJ4517Z              |
| FRD473  | MS34TB | -   | GLS34MLX          | INFD 1730  | NJ9238GK  | FRD468  | CAJ4519Z              |
| ZDA2548   | GX18TB | -   | -                 | FRD131   | T6213Z    | FRD461  | CAE4448Y              |
| IAD 1475  | ML80FB | IAD1448   | FR8.5CL           | IAD1432  | NEK2125GK | -   | AEZ2415Z              |
| IAD1376   | MP14FB | ICD6006   | SC12CL            | FRD162   | NEK2150GK | -   | CAE2420Z              |
| ZDA2548   | GX18TB | IAD1366   | SC18G             | FRD 139  | T6215Z    | -   | CAE4461Y              |
| -   | GL90PB | FRD128  | FR10G-<br>NL8.4MF | -  | NE5170Z   | -   | -                     |
| VD6032  | L45TN  | -   | -                 | FRD 179  | NB6152E   | -   | -                     |
| VD6034  | L57TN  | -   | -                 | -  | NB6165E   | FGD4617   | AEZ4430E              |
| VD6036  | L88TN  | -   | -                 | -  | NE6210E   | FGD4604   | CAE4450E-<br>CAE9450T |

**LOW BACK PRESSURE COMPRESSORS**

| Type     | COMPRESSOR MODELS | Nominal Power (H.P.) |             |                                 | REFRIGERATION CAPACITY AT 50HZ<br>Rafed 54.5°C Cond Temp (Watts) |       |       |       |      |      |        |                 | VOLTAGE         |
|----------|-------------------|----------------------|-------------|---------------------------------|--|-------|-------|-------|------|------|--------|-----------------|-----------------|
|          |                   | t                    | Refrigerant | Displacement (cm <sup>3</sup> ) | Evaporating Temperature  |       |       |       |      |      |        |                 |                 |
|          |                   |                      |             |                                 | Oil charge (cm <sup>3</sup> )                                    | -25°C | -15°C | -10°C | -5°C | 0°C  | +7.2°C | +15°C           |                 |
|          |                   |                      |             |                                 |  | t     | t     | t     | t    | t    | t      | t               |                 |
| PISTON   | THB4410Y          | 1/8                  | R134a       | 2.72                            | 250  | 65.8  | 74    | 101   | 132  | 170  | 237    | 332             | 220-240V/1/50Hz |
|          | THB4413Y          | 1/7                  | R134a       | 3.58                            | 250  | 95.3  | 104   | 137   | 178  | 227  | 315    | 436             | 220-240V/1/50Hz |
|          | THB4415Y          | 1/6                  | R134a       | 4.23                            | 250  | 117   | 123   | 160   | 206  | 262  | 363    | 502             | 220-240V/1/50Hz |
|          | THB4419Y          | 1/5                  | R134a       | 5.20                            | 250  | 132   | 149   | 194   | 251  | 319  | 439    | 602             | 220-240V/1/50Hz |
|          | THB4422Y          | 1/5                  | R134a       | 6.10                            | 250  | 176   | 194   | 248   | 315  | 394  | 533    | 717             | 220-240V/1/50Hz |
|          | AEZ4425Y          | 1/5                  | R134a       | 7.55                            | 450  | 116   | 185   | 260   | 350  | 455  | 635    | 866             | 220-240V/1/50Hz |
|          | AEZ4430Y          | 1/4                  | R134a       | 8.85                            | 450  | 195   | 245   | 328   | 432  | 558  | 777    | 1065            | 220-240V/1/50Hz |
|          | CAE4440Y          | 1/3                  | R134a       | 12.05                           | 450  | 236   | 310   | 421   | 561  | 731  | 1026   | 1413            | 220-240V/1/50Hz |
|          | CAE4448Y          | 3/7                  | R134a       | 14.15                           | 450  | 344   | 403   | 530   | 693  | 892  | 1242   | 1705            | 220-240V/1/50Hz |
|          | CAE4456Y          | 7/16                 | R134a       | 16.2                            | 450  | 381   | 458   | 604   | 787  | 1009 | 1396   | 1904            | 220-240V/1/50Hz |
|          | CAJ4452Y          | 3/7                  | R134a       | 15.2                            | 887  | 226   | 370   | 528   | 724  | 957  | 1358   | 1879            | 220-240V/1/50Hz |
|          | CAJ4461Y          | 1/2                  | R134a       | 18.3                            | 887  | 370   | 475   | 642   | 856  | 1115 | 1569   | 2168            | 220-240V/1/50Hz |
|          | TAJ4461Y          |                      |             |                                 |  |       |       |       |      |      |        |                 | 400V/3/50Hz     |
|          | CAJ4476Y          | 5/8                  | R134a       | 21.75                           | 887  | 352   | 536   | 756   | 1030 | 1358 | 1926   | 2668            | 220-240V/1/50Hz |
|          | CAJ4492Y          | 3/4                  | R134a       | 25.95                           | 887  | 255   | 584   | 871   | 1215 | 1617 | 2295   | 3164            | 220-240V/1/50Hz |
|          | TAJ4492Y          |                      |             |                                 |  |       |       |       |      |      |        |                 | 400V/3/50Hz     |
|          | CAJ4511Y          | 1                    | R134a       | 32.7                            | 887  | 569   | 878   | 1227  | 1654 | 2160 | 3026   | 4148            | 220-240V/1/50Hz |
|          | TAJ4511Y          |                      |             |                                 |  |       |       |       |      |      |        |                 | 400V/3/50Hz     |
| FH4581Y  | 1-1/2             | R134a                | 53.2        | 1330                            | 208  | 1036  | 1650  | 2371  | 3200 | 4583 | 6333   | 220-240V/1/50Hz |                 |
| TFH4518Y |                   |                      |             |                                 |  |       |       |       |      |      |        | 400V/3/50Hz     |                 |
| FH4525Y  | 2                 | R134a                | 74.25       | 1330                            | 1155   | 1667  | 2343  | 3201  | 4329 | 6053 | 8442   | 220-240V/1/50Hz |                 |
| TFH4525Y |                   |                      |             |                                 |  |       |       |       |      |      |        | 400V/3/50Hz     |                 |

Private Picture Copyright : WWW.MBSM.PRO

**Medium Back Pressure Compressor**

**MEDIUM/HIGH BACK PRESSURE COMPRESSORS**

| Type   | COMPRESSOR MODELS | Nominal Power (H.P.) |             |                                 | REFRIGERATION CAPACITY AT 50HZ<br>Rafed 54.5°C Cond Temp (Watts) |       |      |      |        |       | VOLTAGE |                |
|--------|-------------------|----------------------|-------------|---------------------------------|--|-------|------|------|--------|-------|---------|----------------|
|        |                   | t                    | Refrigerant | Displacement (cm <sup>3</sup> ) | Evaporating Temperature  |       |      |      |        |       |         |                |
|        |                   |                      |             |                                 | Oil charge (cm <sup>3</sup> )                                    | -10°C | -5°C | 0°C  | +7.2°C | +10°C |         | +15°C          |
|        |                   |                      |             |                                 |  | t     | t    | t    | t      | t     |         | t              |
| Rotary | RK 5450Y          | 1/2                  | R134a       | 11.4                            | 414  | 609   | 754  | 935  | 1260   | 1407  |         | 230V/1/50/60Hz |
|        | TRK 5450Y         | 1/2                  | R134a       | 11.4                            | 414  | 609   | 754  | 935  | 1260   | 1407  |         | 440V/3/50Hz    |
|        | RK 5480Y          | 2/3                  | R134a       | 18.1                            | 430  | 990   | 1232 | 1530 | 2056   | 2291  |         | 230V/1/50/60Hz |
|        | TRK 5480Y         | 2/3                  | R134a       | 18.1                            | 430  | 990   | 1232 | 1530 | 2056   | 2291  |         | 440V/3/50Hz    |
|        | RK 5512Y          | 1                    | R134a       | 24.4                            | 444  | 1287  | 1598 | 1976 | 2641   | 2931  |         | 230V/1/50/60Hz |
|        | TRK 5412Y         | 1                    | R134a       | 24.4                            | 444  | 1287  | 1598 | 1976 | 2641   | 2931  |         | 440V/3/50Hz    |

Private Picture Copyright : WWW.MBSM.PRO

**MEDIUM/HIGH BACKPRESSURE COMPRESSORS**

| TYPE   | COMPRESSOR MODELS | Nominal Power (H.P.) | Refrigerant                     |                               | Motor type | REFRIGERATION CAPACITY AT 50HZ<br>Rated @54.5°C Cond Temp (Watts) |        |        |        |         |         | VOLTAGE         |
|--------|-------------------|----------------------|---------------------------------|-------------------------------|------------|---|--------|--------|--------|---------|---------|-----------------|
|        |                   |                      | Displacement (cm <sup>3</sup> ) | Oil charge (cm <sup>3</sup> ) |            | Evaporating Temperature   |        |        |        |         |         |                 |
|        |                   |                      |                                 |                               |            | -15°C   | -9.4°C | -3.9°C | +7.2°C | +10.0°C | +12.8°C |                 |
|        |                   |                      |                                 |                               |            |   |        |        |        |         |         |                 |
| PISTON | AE3414YS          | 1/6                  | R134a                           | 4.49                          | RSIR       | 116   | 159    | 212    | 354    | 398     | 446     | 220-240V/1/50Hz |
|        | AE3417YS          | 1/6                  | R134a                           | 5.67                          | RSIR       | 148   | 203    | 270    | 451    | 507     | 568     | 220-240V/1/50Hz |
|        | AE4425YS          | 1/5                  | R134a                           | 7.57                          | CSIR       | 221   | 303    | 403    | 673    | 757     | 849     | 220-240V/1/50Hz |
|        | AE4430YS          | 1/4                  | R134a                           | 8.85                          | CSIR       | 262   | 358    | 477    | 796    | 896     | 1003    | 220-240V/1/50Hz |
|        | AE4440YS          | 1/3                  | R134a                           | 12.04                         | CSIR       | 346   | 474    | 631    | 1054   | 1186    | 1328    | 220-240V/1/50Hz |
|        | AE4448YS          | 3/7                  | R134a                           | 14.17                         | CSIR       | 404   | 553    | 736    | 1230   | 1383    | 1550    | 220-240V/1/50Hz |

Private Picture Copyright : WWW.MBSM.PRO

**THE NEW TWO GENERATION BRAZIL COMPRESSORS**

| TYPE   | COMPRESSOR MODELS | Nominal Power (H.P.) | Refrigerant                     |                               | Motor type | REFRIGERATION CAPACITY AT 50HZ<br>Rated @54.5°C Cond Temp (Watts) |       |       |      |      |      | VOLTAGE |                 |       |
|--------|-------------------|----------------------|---------------------------------|-------------------------------|------------|---|-------|-------|------|------|------|---------|-----------------|-------|
|        |                   |                      | Displacement (cm <sup>3</sup> ) | Oil charge (cm <sup>3</sup> ) |            | Evaporating Temperature   |       |       |      |      |      |         |                 |       |
|        |                   |                      |                                 |                               |            | -20°C   | -15°C | -10°C | -5°C | 0°C  | +5°C |         | +10°C           | +15°C |
|        |                   |                      |                                 |                               |            |   |       |       |      |      |      |         |                 |       |
| PISTON | AE4425Y-FZ1A      | 1/5                  | R134a                           | 6.69                          | 160        | 237   | 312   | 390   | 479  | 583  | 709  | 863     | 220-240V/1/50Hz |       |
|        | AE4430Y-FZ1A      | 1/4                  | R134a                           | 8.02                          | 239        | 270   | 352   | 450   | 566  | 702  | 861  | 1045    | 220-240V/1/50Hz |       |
|        | AE4440Y-FZ1A      | 1/3                  | R134a                           | 10.33                         | 332        | 369   | 471   | 591   | 733  | 899  | 1093 | 1317    | 220-240V/1/50Hz |       |
|        | AE4450Y-FZ1C      | 3/8                  | R134a                           | 13.24                         | 345        | 478   | 620   | 778   | 957  | 1163 | 1402 | 1680    | 220-240V/1/50Hz |       |
|        | AE4456Y-FZ1C      | 1/2                  | R134a                           | 14.51                         | 479        | 534   | 682   | 854   | 1052 | 1282 | 1547 | 1853    | 220-240V/1/50Hz |       |
|        | AE4460Y-FZ3C      | 1/2                  | R134a                           | 15.09                         | 435        | 561   | 712   | 890   | 1095 | 1330 | 1594 | 1889    | 220-240V/1/50Hz |       |

Private Picture Copyright : WWW.MBSM.PRO

**MEDIUM/HIGH BACK PRESSURE COMPRESSORS**

| TYPE   | COMPRESSOR MODELS | Nominal Power (H.P.) | Refrigerant                     |                               | Oil charge (cm <sup>3</sup> ) | REFRIGERATION CAPACITY AT 50HZ<br>Rated @54.5°C Cond Temp (Watts) |       |      |      |      |       | VOLTAGE |                 |
|--------|-------------------|----------------------|---------------------------------|-------------------------------|-------------------------------|---|-------|------|------|------|-------|---------|-----------------|
|        |                   |                      | Displacement (cm <sup>3</sup> ) | Oil charge (cm <sup>3</sup> ) |                               | Evaporating Temperature   |       |      |      |      |       |         |                 |
|        |                   |                      |                                 |                               |                               | -15°C   | -10°C | -5°C | 0°C  | +5°C | +10°C |         | +15°C           |
|        |                   |                      |                                 |                               |                               |   |       |      |      |      |       |         |                 |
| ROTARY | RGA/HGA4467Z      | 1/2                  | R404A                           | 9.50                          | 290                           | 679   | 847   | 1047 | 1283 | 1557 | 1872  | 2231    | 220-240V/1/50Hz |
|        | BGA/HGA4480Z      | 2/3                  | R404A                           | 11.50                         | 290                           | 825   | 1017  | 1252 | 1530 | 1851 | 2212  | 2613    | 220-240V/1/50Hz |
|        | RGA/HGA4492Z      | 3/4                  | R404A                           | 12.50                         | 290                           | 905   | 1133  | 1398 | 1706 | 2060 | 2468  | 2932    | 220-240V/1/50Hz |
|        | RGA/HGA4512Z      | 1                    | R404A                           | 16.10                         | 290                           | 1163  | 1438  | 1770 | 2160 | 2609 | 3118  | 3689    | 220-240V/1/50Hz |
|        | RGA/HGA4445Y      | 1/3                  | R134a                           | 9.50                          | 290                           | 392   | 493   | 618  | 770  | 954  | 1173  | 1430    | 220-240V/1/50Hz |
|        | RGA/HGA4450Y      | 2/5                  | R134a                           | 11.50                         | 290                           | 501   | 625   | 778  | 963  | 1184 | 1445  | 1749    | 220-240V/1/50Hz |
|        | RGA/HGA4460Y      | 1/2                  | R134a                           | 12.70                         | 290                           | 537   | 677   | 844  | 1045 | 1287 | 1576  | 1920    | 220-240V/1/50Hz |
|        | RGA/HGA4576Y      | 2/3                  | R134a                           | 16.10                         | 290                           | 696   | 870   | 1086 | 1349 | 1662 | 2030  | 2457    | 220-240V/1/50Hz |

Private Picture Copyright : WWW.MBSM.PRO

# Embraco, Universal, EM45HHR, R134a, Refrigeration Compressor, Low, Medium & High Back Pressure, 1/8hp, Nominal Motor HP, For use with refrigerators, ice makers, frozen food cabinets, frozen food display cases, display windows, 115v

Category: compressor

written by Lilianne | 8 December 2021

Embraco Universal EM45HHR R134a Refrigeration Compressor. Low, Medium & High Back Pressure. 1/8 Nominal Motor HP. For use with refrigerators, ice makers, frozen food cabinets, frozen food display cases, display windows, etc.

Replaces Embraco EMI40HNR and EM45HNR and Tecumseh AEA3417YXA.

Motor: Resistive Start Inductive Run & Captive Start Inductive Run (RSIR/CSIR)

Evaporating Temperatures: -10°F to 45°F

## Product Specifications

|                          |           |
|--------------------------|-----------|
| BTU Capacity HBP:        | 1775      |
| BTU Capacity LBP & MBP:  | 420       |
| Horsepower (HP):         | 1/8       |
| Locked Rotor Amps (LRA): | 17.0      |
| Motor Type:              | RSIR/CSIR |
| Required Refrigerant :   | R134a     |
| Skill Level:             |           |
| Starting Torque:         | Normal    |
| Volts (V):               | 115       |

[Mbsm\\_dot\\_pro\\_private\\_PDF\\_EM45HHR-1Télécharger](#)

[Mbsm\\_dot\\_pro\\_private\\_PDF\\_EM45HHRTélécharger](#)

unit #  
7511

**TRUE**®  
True Manufacturing Co., Inc.  
True Refrigeration®  
O'Fallon, MO 63366

CABINET SERIAL NUMBER: **8947049**  
  
8947049



MADE IN THE USA

MODEL: **GDM - 06 - LD**

|     |    |                               |                            |
|-----|----|-------------------------------|----------------------------|
| 115 | V  | HP COMPRESSOR M/N:            | 1/8 EM45HHR                |
| 60  | Hz | REFRIGERANT:                  | R134A                      |
| 1   | PH | DESIGN PRESSURES - PSIG (kPa) | HIGH SIDE 370 LOW SIDE 140 |
| 2.3 | A  |                               |                            |

BLOWING AGENT: R611  
U.S. PATENT NUMBERS:

THIS UNIT LISTED UNDER N.S.F. NO. 7  
FOR THE STORAGE AND/OR DISPLAY OF  
PACKAGED OR BOTTLED PRODUCTS ONLY

**DBG**



Private Picture Copyright : [WWW.MBSM.PRO](http://WWW.MBSM.PRO)

GDM-06-LD BLK  
8947049







Private Picture Copyright : [WWW.MBSM.PRO](http://WWW.MBSM.PRO)



ture Copyright : [WWW.MBSM.PRO](http://WWW.MBSM.PRO)



Private Picture Copyright : [WWW.MBSM.PRO](http://WWW.MBSM.PRO)



Private Picture Copyright : [WWW.MBSM.PRO](http://WWW.MBSM.PRO)



Private Picture Copyright : [WWW.MBSM.PRO](http://WWW.MBSM.PRO)



**TRUE**

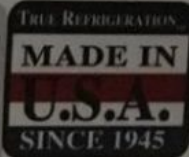
True Manufacturing Co., Inc.  
True Refrigeration™  
O'Fallon, MO 63366  
MADE IN THE USA

CABINET  
SERIAL  
NUMBER:

**7966464**



7966464



MODEL: **TUC-24**

DESIGN PRESSURES - PSI (N/cm<sup>2</sup>)

HIGH SIDE **312**

LOW SIDE **140**

REFRIG UNIT:  
**EM45HHR**

CHARGE  
REFRIGERANT: **R134A**

**4 oz. (g)**

| HP  | VOLTAGE | HZ | PH | F.L. AMPS |
|-----|---------|----|----|-----------|
| 1/8 | 115     | 60 | 1  | 2.5       |

**BBE**

THIS UNIT LISTED UNDER N.S.F. NO. 7

U.S. PATENT NUMBERS:  
5,553,354/5,433,082/5,699,676  
D273,298/D271,107/5,584,547  
6,792,769



LISTED  
COMMERCIAL  
REFRIGERATION  
2000



DO NOT CLEAN LABEL WITH SOLVENT  
**DRI**

Intended for use in rooms  
with an ambient temperature  
of 86 (30C) or less



Private Picture Copyright : [WWW.MBSM.PRO](http://WWW.MBSM.PRO)





Private Picture Copyright : [WWW.MBSM.PRO](http://WWW.MBSM.PRO)

# Approximate base metal temperature

Category: Technologie

written by Lilianne | 8 December 2021

approximate base metal temperature

التمييز بين درجات حرارة المعدن خلال عملية التلحيم

#mbsmpro



Private Picture Copyright: WWW.MBSM.PRO

## CNC Machining

Category: Programmation,Technologie

written by Lilianne | 8 December 2021

<https://www.cnccode.com>

# What is CNC Machining?



CNC machining can be defined as a process in which pre-programmed computer software dictates the movement of factory machinery and tools. As a result, manufacturers can produce parts in less time, reduce waste and eliminate the risk of human error.

This manufacturing process is used to control a wide variety of complex machinery, which will be discussed in this article. Essentially, CNC machining makes it possible for three-dimensional cutting to be completed by following one set of prompts.

## The Different Types of CNC Machines

CNC machines are designed to manufacture a wide variety of items. As such, there are several different types of commonly used CNC machines.

It's important to know that these are not your average machines. They require the skills of a trained professional to be able to produce high quality commercial products. All of the following machines use G-code, which is the language that a CNC machine understands. Each type of CNC machine caters to a specific purpose.

### CNC Milling Machine

One of the most common types of CNC machines, a CNC mill utilizes computer controls to cut various materials. Mills can translate specific programs of numbers and letters in order to move the spindle in various ways.

Many mills use what is known as G-code, which, as mentioned, is a standardized programming language recognized by most CNC machines. A CNC mill can have a wide

array of functions, such as face milling, shoulder milling, tapping, drilling and turning. Most CNC mills come in three to six-axis configurations. A CNC mill is very large compared to other tools and can be quite costly. Some CNC milling machine manufacturers include Okuma, HAAS and DMG Mori.

## CNC Lathe

A lathe is a CNC machine that functions to cut work pieces as they are rotated. CNC lathes can make precise cuts quickly by using various tools.

These CNC machines are quite effective in the precision they offer compared to manual lathes. They often have fewer axes than CNC milling machines, and are therefore smaller in size and more compact.

CNC lathes come with similar controls to those of CNC mills and can read both G-code and other proprietary programming languages. Some of the most common CNC lathe machine manufacturers include HAAS, Mori Seiki and Okuma. The framework of CNC lathes is similar to manual lathes.

---

## Réfrigerant Pressure Détails, Pression de Recharge Gaz, ضغوطات غاز التبريد عند الشحن

Category: Arabe,Chaud&Froid

written by Lilianne | 8 December 2021

Réfrigerant Pressure Détails

# Refrigerant Pressure Details

By ACTech /All AC Error code

| Refrigerant Name | Standing Pressure | Suction Pressure             | Discharge Pressure | Chemical name   | Boiling Point                      |
|------------------|-------------------|------------------------------|--------------------|---|------------------------------------|
| R 22             | 150 – 160 psi     | 60 – 70 psi                  | 250 – 300 psi      | Chlorodifluoromethane<br>CHClF <sub>2</sub>                           | -40.7 °C (-41.3 °F;<br>232.5 K)    |
| R134A            | 80 – 90 psi       | 12 – 18 psi<br>Refrigeration | 140 psi            | Tetrafluoroethane<br>CF <sub>3</sub> CH <sub>2</sub> F                | -26.3 °C (-15.3 °F;<br>246.8 K)    |
| R600A            | 40 psi            | Below 0 psi<br>(In Vacuum)   | 150 psi            | Isobutane<br>(CH <sub>3</sub> ) <sub>3</sub>                          | -11.7 °C (10.9 °F;<br>261.4 K)     |
| R32              | 245 -255 psi      | 110 to 120 psi               | 300 – 350 psi      | Difluoromethane<br>CH <sub>2</sub> F <sub>2</sub>                     | -52 °C (-62 °F; 221 K)             |
| R290             | 130 -135 psi      | 65 – 70 psi                  | 275 – 300 psi      | Propane<br>C <sub>3</sub> H <sub>8</sub>                              | -42.25 C; (-44.05 °F;<br>230.90 K) |
| R407C            | 180 -190 psi      | 75 – 80 psi                  | 280 -300 psi       | Mixture<br>of hydrofluorocarbons<br>R-32/125/134a<br>(23±2/25±2/52±2) | -43.8 °C                           |
| R404A            | 180 -185 psi      | 85 – 90 psi                  | 275 – 295 psi      | HFC "nearly azeotropic"<br>R-125/143a/134a<br>(44±2/52±1/4±2)         | -46.5 °C                           |
| R417A            | 140 psi           | 65 psi                       | 270 psi            | Mixture of<br>R-125/134a/600<br>(79±1/18.3±1/2.7±.1,-.5)              | -39 °C                             |
| R410A            | 230 – 250 psi     | 110 – 125 psi                | 450 – 510 psi      | Mixture of<br>R-32/125<br>(50+.5,-1.5/50+1.5,-.5)                     | -51.4 °C                           |

# Fully4World

Some Refrigerant Standing, Suction, Discharge Pressure & Boiling Temperature List.

| Refrigerant Name | Standing Pressure | Suction Pressure | Discharge Pressure | Boiling Temp |
|------------------|-------------------|------------------|--------------------|--------------|
| R-22             | 150-155 psi       | 60-70 psi        | 250-300 psi        | -40.8 C      |
| R-410a           | 225-230 psi       | 120-130 psi      | 450-500 psi        | -51.4 C      |
| R-134a           | 85-95 psi         | 12-15 psi        |                    | -26.2 C      |
| R-600a           | 40-50 psi         | Below 0-1 psi    |                    | -11.7 C      |
| R-32             | 240-245 psi       | 110-115 psi      |                    | -52.0 C      |
| R-290            | 125-130 psi       | 65-70 psi        | 275-300 psi        | -42.1 C      |
| R-407c           | 180-185 psi       | 75-80 psi        | 275-300 psi        | -45.0 C      |
| R-404a           | 180-185 psi       | 80-90 psi        |                    | -46.2 C      |
| R-417            | 140 psi           | 65 psi           | 261 psi            |              |

Private Picture Copyright : [WWW.MBSM.PRO](http://WWW.MBSM.PRO)

Compressor, r600a, 1/5HP, LBP, 149W, htk12aa, Electrolux, Brandt, 220-240V 50Hz, Run Capacitor: 4.0  $\mu$ F ( 5.0  $\mu$ F

# as alternative ) , Motor type RSCR/RSIR

Category: compressor

written by Lilianne | 8 December 2021

compressor/compressor ACC – Electrolux HTK12AA, LBP – R600a, Power consumption 1/5HP++, 220-240V/1/50Hz, Motor type RSIR, Injection: Capillary operation, Displacement 11.1 cm<sup>3</sup>, Oil type mineral oil, Oil quantity 170 cm<sup>3</sup>, Power 116 W at -25 / +55°C, Power consumption 149 W, Current 0.77, Weight 8.6Cooling capacity

**-10 °C -15 °C -20 °C -25 °C -30 °C -35 °C**

300 240 188 144 107 78

|                                     |             |
|-------------------------------------|-------------|
| <b>Shipping Class</b>               | Standard    |
| <b>Scope Of Application</b>         | LBP         |
| <b>Lieferzeit</b>                   | 2-3 Wochen  |
| <b>Type Of Construction</b>         | Piston      |
| <b>Condensation Temperature</b>     | 55°C        |
| <b>Maker</b>                        | ACC         |
| <b>Manufacturer No.</b>             | HPY12AA     |
| <b>Displacement In Cm3</b>          | 11.1        |
| <b>Measuring Requirements</b>       | Ashrae      |
| <b>Refrigerants</b>                 | R600a       |
| <b>Series</b>                       | HPY         |
| <b>Condensing Units Compressors</b> | Compressors |
| <b>Suspense</b>                     | 220-240V    |
| <b>Weight In Kg</b>                 | 12.7        |

1. Be the first to review this product

[Mbsm\\_dot\\_pro\\_private\\_PDF\\_HTK12AA-1-1Télécharger](#)

[Mbsm\\_dot\\_pro\\_private\\_PDF\\_HTK12aa-1Télécharger](#)



Private Picture Copyright : [WWW.MBSM.PRO](http://WWW.MBSM.PRO)



## Verdichter - Cubigel

R-600a, LBP

Hermetische Verdichter für Kapillrohrbetrieb.  
Hochleistungs-Verdichter mit Betriebskondensatoren.  
LBP Temperaturbereich -30 °C bis -10 °C.  
Netzspannung 220 - 240 V / 50 Hz.



| Artikelnr.    | Typ       | Leistung (PS) | Kälteleistung [W] T <sub>e</sub> -25 °C, T <sub>k</sub> +45 °C |     |
|---------------|-----------|---------------|--|-----|
|               |           |               |  | -25 |
| 47-32 HQY45AA | HQY 45 AA | 1/12          |  | 52  |
| 47-32 HQY55AA | HQY 55 AA | 1/9           |  | 62  |
| 47-32 HQY70AA | HQY 70 AA | 1/8           |  | 80  |
| 47-32 HQY80AA | HQY 80 AA | 1/7           |  | 99  |
| 47-32 HQY90AA | HQY 90 AA | 1/7           |  | 109 |
| 47-32 HQY99AA | HQY 99 AA | 1/6           |  | 119 |
| 47-32 HPY12AA | HPY 12 AA | 1/5           |  | 144 |
| 47-32 HPY14AA | HPY 14 AA | 1/5           |  | 166 |
| 47-32 HPY16AA | HPY 16 AA | 1/4           |  | 181 |

**Gesamtkatalog jetzt anfordern unter [info@kaeltepartner.net](mailto:info@kaeltepartner.net)!**

 **Hinweis: Bilder Können vom Produkt abweichen**

Private Picture Copyright: [WWW.MBSM.PRO](http://WWW.MBSM.PRO)