

Mbsm.pro, COMPRESSOR, EMBRACO, HERMETIC, FREEZE, ICE CREAM, NT2192GK, 1.2 HP, 1v2 HP , 220-240V, LBP, 1262 W, R404A/R507, CSR

written by Lilianne | 12 February 2022



Mbsm.pro, COMPRESSOR, EMBRACO, HERMETIC, FREEZE, ICE CREAM, NT2192GK, 1.2 HP, 1v2 HP , 220-240V, LBP, 1262 W, R404A/R507, CSR

Mbsm.pro, Compressor, Danfoss, 3/4 HP, ++BIG, SECOP, SC21G, HMBP, R134a, SC21G 8124, 8124 , R134A, 550W

written by Lilianne | 12 February 2022



Private Picture Copyright: WWW.MBSM.PRO

Mbsm.pro, Compressor, Danfoss, 3/4 HP, ++BIG, SECOP, SC21G,
HMBP, R134a, SC21G 8124, 8124 , R134A, 550W

**Mbsm.pro, COMPRESSOR,
Tecumseh, 1/2 hp ++, 7/16 HP,
CAE4456Y, CSIR, HMBP, ++Big,
R134A, 1396 W, 1201 KCal,
4760 Btu, P.frigorifique 436
W -25**

written by Lilianne | 12 February 2022



Private Picture Copyright: WWW.MBSM.PRO

Mbsm.pro, COMPRESSOR, Tecumseh, 1/2 hp ++, 7/16 HP, CAE4456Y, CSIR, HMBP, ++Big, R134A, 1396 W, 1201 KCal, 4760 Btu, P.frigorifique 436 W -25

**Mbsm.pro, Compressor,
AE66ZD7, Tecumseh 1/6 HP,
220V, 450 BTU, R12, Hermetic**

written by Lilianne | 12 February 2022



Private Picture Copyright: WWW.MBSM.PRO

Mbsm.pro, Compressor, AE66ZD7, Tecumseh 1/6 HP, 115V, 450 BTU, R12, Hermetic

**Mbsm.pro, Compressor,
Embraco, Aspera, MA8DCV04,
NT6220GK, Hermetic
reciprocating compressor ,
R404a, MHBP, 17.4CC, 3/4Hp,
++big, 240V~50Hz**

written by Lilianne | 12 February 2022



Private Picture Copyright: WWW.MBSM.PRO

Mbsm.pro, Compressor, Embraco, Aspera, NT6220GK, Hermetic
reciprocating compressor , R404a, MHBP, 17.4CC, 3/4Hp, ++big,
240V~50Hz

Mbsm.pro, PDF, File, Embraco, Catalogue, r134a, Embraco Condensing Units

written by Lilianne | 12 February 2022

Embraco Condensing Units														HRP Code	Sales Cat
Unit Model	Motor Type	Expan. Device	Motor HP	Performance (Watts)										HRP Code	Sales Cat
				-25°C	-20°C	-15°C	-10°C	-5°C	0°C	5°C	10°C	15°C			
R134a MHBP															
UEM76144Z	CSIR	CV	1/5	-	-	249	308	375	451	533	-	-	208162	20A	
UEM76160Z	CSIR	CV	1/6	-	-	335	411	499	597	706	-	-	208164	20A	
UEM76170Z	CSIR	CV	1/4	-	-	359	443	539	646	764	-	-	208166	20A	
UNEK6187Z	CSIR	CV	1/4	-	-	405	503	616	744	887	-	-	208168	20A	
UNEK6210Z	CSIR	CV	1/3	-	-	430	584	789	929	1065	-	-	208170	20A	
UNEK6212Z	CSIR	CV	1/2	-	-	640	800	975	1157	1354	-	-	208172	20A	
UNT6215Z	CSIR	CV	1/2	-	-	705	816	1003	1188	1362	-	-	208180	20A	
UNEK6114Z	CSIR	CV	1/2	-	-	658	826	1004	1192	1395	-	-	208174	20A	
UNT6220Z	CSIR	CV	2/3	-	-	843	1050	1281	1541	1828	-	-	208184	20A	
UNL6220Z	CSIR	CV	3/4	-	-	994	1256	1529	1843	2154	-	-	207861	20A	
UNT6217Z	CSIR	CV	3/4	-	-	993	1275	1555	1861	2178	-	-	208182	20A	
UNJ6226Z	CSR	CV	1	-	-	1372	1686	2035	2419	2814	-	-	207888	20A	
R404A MHBP															
UEM76144GK	CSIR	CV	1/4	-	-	277	338	400	470	543	615	-	-	208186	20A
UEM76150GK	CSIR	CV	1/4	-	-	301	368	435	504	574	644	-	-	208188	20A
UEM76165GK	CSIR	CV	1/3	-	-	360	445	525	626	729	815	-	-	208190	20A
UNEK6181GK	CSIR	CV	1/2	-	-	427	530	644	767	900	1040	-	-	208192	20A
UNEK6210GK	CSIR	CV	1/3	-	-	581	670	665	886	1032	1228	-	-	208194	20A
UNEK6213GK	CSIR	CV	1/2	-	-	734	904	1064	1213	1352	1468	-	-	208196	20A
UNEK6217GK	CSIR	CV	1/2	-	-	741	960	1180	1406	1640	1880	-	-	208198	20A
UNT6220GK	CSR	CV	3/4	-	-	793	1024	1262	1506	1754	2009	-	-	208204	20A
UNT6222GK	CSR	CV	3/4	-	-	TBA	TBA	TBA	TBA	TBA	TBA	-	-	208206	20A
UNT6226GK	CSR	CV	1	-	-	1266	1568	1878	2198	2526	2864	-	-	208202	20A
UNJ6226GK	CSR	CV	1	-	-	1206	1523	1822	2094	2364	2616	-	-	208140	20A
UNJ6226GS	3ph	CV	1	-	-	1206	1523	1822	2094	2364	2616	-	-	208200	20A
UNJ6230GK	CSR	CV	1-1/4	-	-	1467	1856	2219	2550	2879	3186	-	-	208145	20A
UNJ6230GS	3ph	CV	1-1/4	-	-	1467	1856	2219	2550	2879	3186	-	-	208150	20A
UNJ6238GK	CSR	CV	1-1/2	-	-	1817	2297	2748	3157	3565	3963	-	-	208155	20A

Private Picture Copyright : WWW.MBSM.PRO

Mbsm.pro, PDF, File, Embraco, Catalogue, r134a, Embraco Condensing Units

Mbsm.pro, PDF, File, Cubigel Katalog, r134a, Huayi, Electrolux, ZEM

written by Lilianne | 12 February 2022

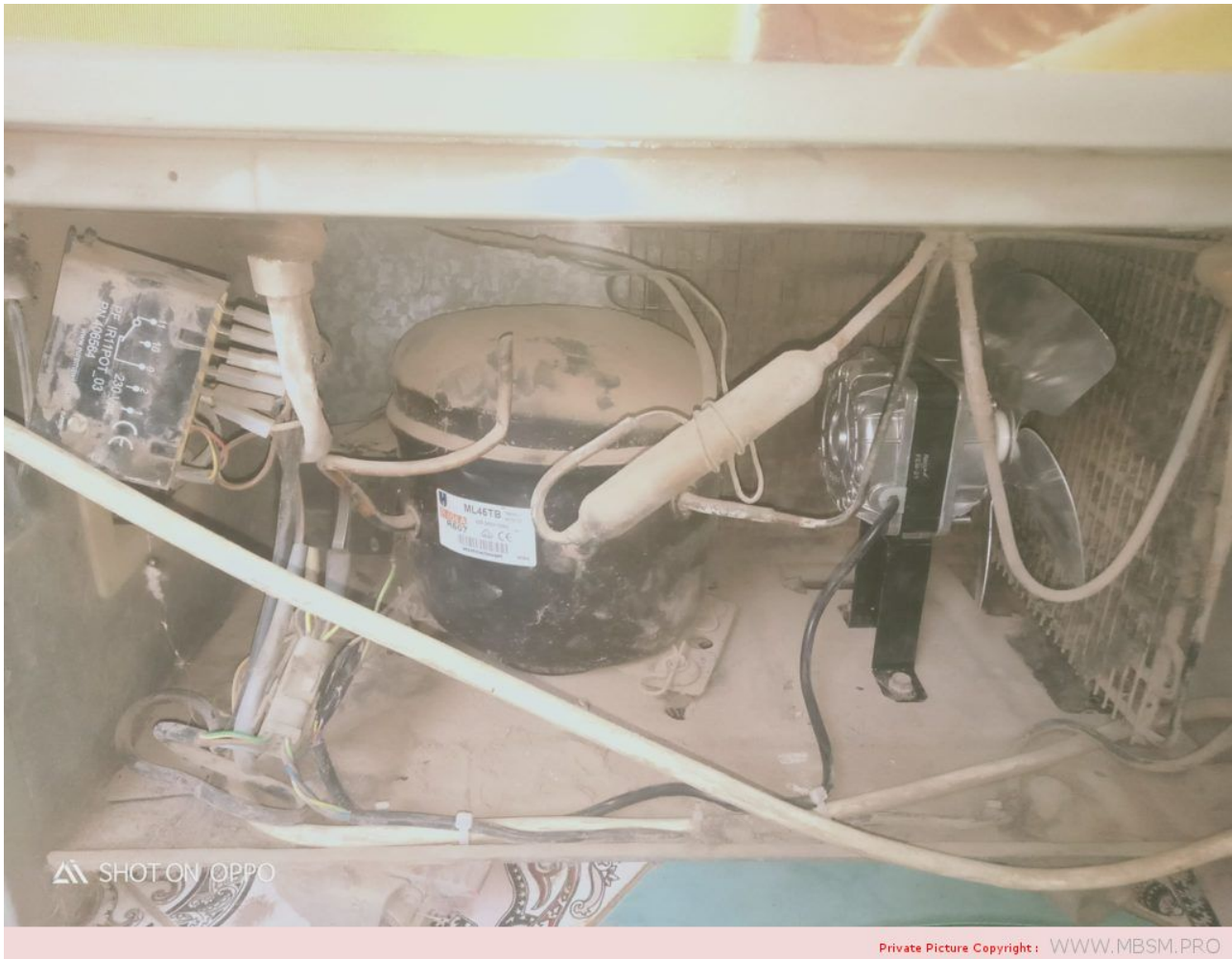
R134a HMBP HBP 50 Hz													R134a compressors compatible with R12							
MODEL	DISPLACEMENT cm ³	POWER hp	APPLICATION	CPR COOLING	VOLTAGE FREQUENCY	MOTOR	STARTING	EXPANSION	REFRIGERATION CAPACITY °C										WEIGHT Kg	DESIGN
									COP in W/W 1 W = 0.864 kcal/h = 3.415 BTU/h Evaporating Temperature °C											
									Cecostat (W)					Ashrae						
									-25	-15	5	COP	10	5	7.2					
GLY45RAa	4.56	1/6	HMBP	F	220-240V 50Hz -1	CSIR	R	C-V	71	139	373	1.85	452	385	2.25	9	Lb			
GLY45RAb	4.56	1/6	HMBP	F	220-240V 50Hz -1	CSR	R	C-V	71	159	373	2.12	452	385	2.45	9	Lb			
GLY60RAa	5.98	1/5	HMBP	F	220-240V 50Hz -1	CSIR	R	C-V	106	191	486	2.04	586	500	2.36	9.9	Lc			
GLY60RAb	5.98	1/5	HMBP	F	220-240V 50Hz -1	CSR	R	C-V	106	191	486	2.25	586	500	2.60	9.9	Lc			
GLY80RAa	8.10	1/5	HMBP	F	220-240V 50Hz -1	CSIR	R	C-V	159	275	681	2.17	819	700	2.50	10.4	Lc			
GLY80RAb	8.10	1/5	HMBP	F	220-240V 50Hz -1	CSR	R	C-V	159	275	681	2.35	819	700	2.71	10.4	Lc			
GLY90RAa	9.09	1/4	HMBP	F	220-240V 50Hz -1	CSIR	R	C-V	169	298	748	2.06	901	770	2.37	10.5	Lc			
GLY90RAb	9.09	1/4	HMBP	F	220-240V 50Hz -1	CSR	R	C-V	169	298	748	2.27	901	770	2.61	10.5	Lc			
GLY99RAa (**)	9.95	3/8	HMBP	F	220-240V 50Hz -1	CSIR	R	C-V	189	328	814	2.01	972	836	2.31	10.8	Ld			
GLY99RAb (**)	9.95	3/8	HMBP	F	220-240V 50Hz -1	CSR	R	C-V	189	328	814	2.18	972	836	2.49	10.8	Ld			
GPY12RAa	12.10	3/8	HMBP	F	220-240V 50Hz -1	CSIR	R	C-V	228	401	993	2.05	1192	1020	2.35	12.6	Pd			
GPY12RAb	12.10	3/8	HMBP	F	220-240V 50Hz -1	CSR	R	C-V	228	401	993	2.24	1192	1020	2.58	12.6	Pd			
GPY14RAa	14.32	3/8	HMBP	F	220-240V 50Hz -1	CSIR	R	C-V	296	492	1161	1.98	1386	1190	2.27	12.6	Pd			
GPY14RAb	14.32	3/8	HMBP	F	220-240V 50Hz -1	CSR	R	C-V	296	492	1161	2.18	1386	1190	2.50	12.6	Pd			
GPY16RAa	16.15	3/8	HMBP	F	220-240V 50Hz -1	CSIR	R	C-V	315	522	1248	2.20	1490	1351	2.31	12.8	Pd			
GPY16RAb	16.15	3/8	HMBP	F	220-240V 50Hz -1	CSR	R	C-V	315	522	1248	2.38	1490	1351	2.50	12.8	Pd			

Private Picture Copyright: WWW.MBSM.PRO

Mbsm.pro, PDF, File, Cubigel Katalog, r134a, Huayi, Electrolux, ZEM

Mbsm.pro, Compressor, Cubigel, Huayi, Electrolux, ZEM, Freezer, ML45TB, HMBP, R404A, R507, 220 - 240V/1/50Hz, 1/5 HP, ++ Big, 1/4 Hp -, CSIR

written by Lilianne | 12 February 2022



Compressor ACC Cubigel Huayi Electrolux ZEM ML45TB, HMBP – R404A, R507, 220 – 240V/1/50Hz, 1/5 HP, discharge 4.5 cm³, motor type CSIR, oil type ISO VG46 ester, oil charge 300 cm³, 528 W at +5 / +55 °, input power, current 352 W, 2.04A, expansion device: capillar or valve, cooling: fan, weight 10.1 kg

Mbsm.pro, Compressor, Haili, s1310MV, 5270 W, 17981 BTU,

220 V, 1PH, R22, 2.2 HP

written by Lilianne | 12 February 2022

Mbsm.pro, Compressor, Haili, sl310MV, 5270 W, 17981 BTU, 220 V, 1PH, R22

**Mbsm.pro, Compressor,
Hitachi, High Quality,
Rotary, Sh356mv-C7nu, Air
Conditioner, 2.4 HP, 19283
BTU, R22, 220 V, 1 PH, 5655 w**

written by Lilianne | 12 February 2022

Mbsm.pro, Compressor, Hitachi, High Quality, Rotary, Sh356mv-C7nu, Air Conditioner, 2.4 HP, 19283 BTU, R22, 220 V, 1 PH, 5655 w