

**GL50AA VE09**  
**220-240V 50Hz ~1**

**COMPRESSOR**

Displacement (cm <sup>3</sup> )	5.11
Diameter (mm)	20.88
Stroke (mm)	14.94
Net Weight (Kg)	8.9
Oil type	ISO VG 22 ESTER
Oil charge (cm <sup>3</sup> )	210

**MOTOR**

Approximate Power (CV)	1/7
Voltage/Frequency (V/Hz)	220V 50Hz
Voltage range (V)	187-264
Code	-
Type	RSIR
Phase number	1 PH
Locked rotor current (A)	8.6
Main W. resist. at 25°C (Ω)	23.0
Start W. resist. at 25°C (Ω)	24.75

**APPLICATION**

Application	Low back pressure
Refrigerant	R134a
Evaporating (°C)	-35 to -10
Expansion	Capillar
Comp. cooling	Static
Max. ambient temp. (°C)	43

**NOMINAL PERFORMANCE**

	<b>CYCLE A</b>	<b>CYCLE B</b>
Cooling capacity (W)	91	124
Input power (W)	109	115
EER (kcal/Wh)	0.71	0.93
COP (W/W)	0.83	1.08
Current (A)	0.72	0.73

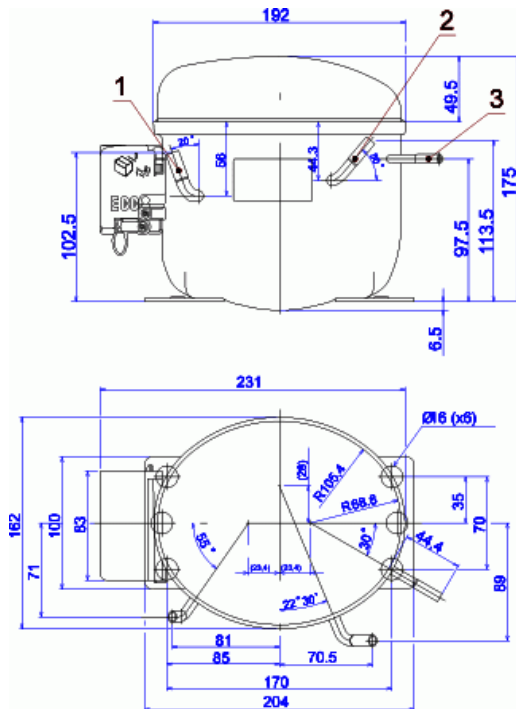
**TEST CONDITIONS**

	<b>CYCLE A</b>	<b>CYCLE B</b>
Evaporating temp. (°C)	-25.0	-23.3
Condensing temp. (°C)	55.0	55.0
Liq.t. entering expan. (°C)	55.0	32.0
Ambient t. and return (°C)	32.0	32.0
Tens/Freq (V/Hz)	220V 50Hz	220V 50Hz

**ELECTRICAL COMPONENTS**

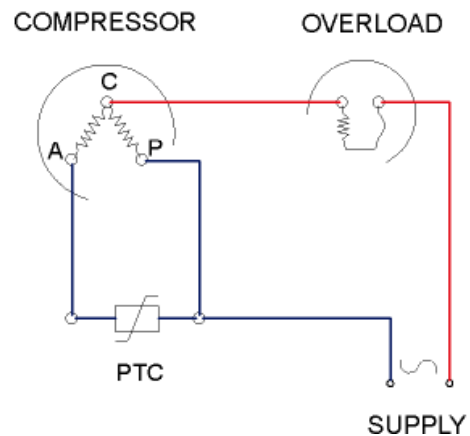
Relay	PTC 3003 - K100			
Nominal voltage (V)	200 - 240			
Resistance μ	14,00			
Protector	MRP318LZ	T0453	AE37FJ	4TM205NFBY Y
Current (A)	5.9	5.2	5.9	6.0
Time check (seg)	7.5-14	7.5-14	7.5-14	5-15
Disc temp. (Open/Close) (C)	120.0 / 61.0	125.0 / 62.0	115.0 / 62.0	120.0 / 61.0

**DIMENSIONS AND ELECTRICAL DIAGRAM**



	<b>DESIGNATION</b>	<b>INTERNAL DIAM. (MM)</b>
1	Suction/Service	6.5
2	Service/Suction	6.5
3	Discharge	4.9

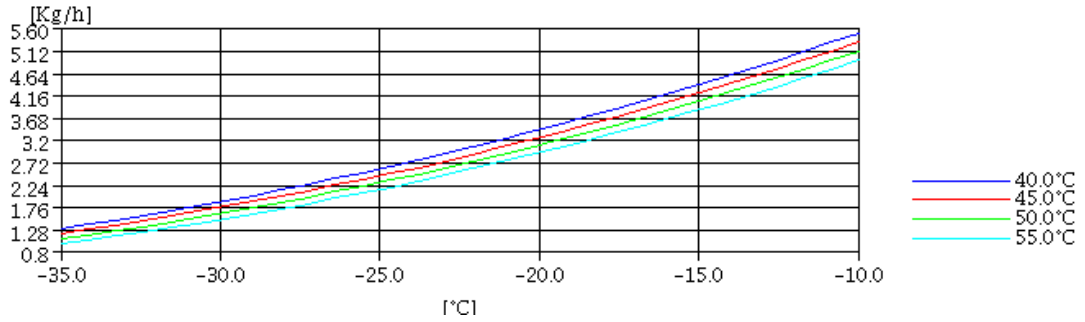
**RSIR**



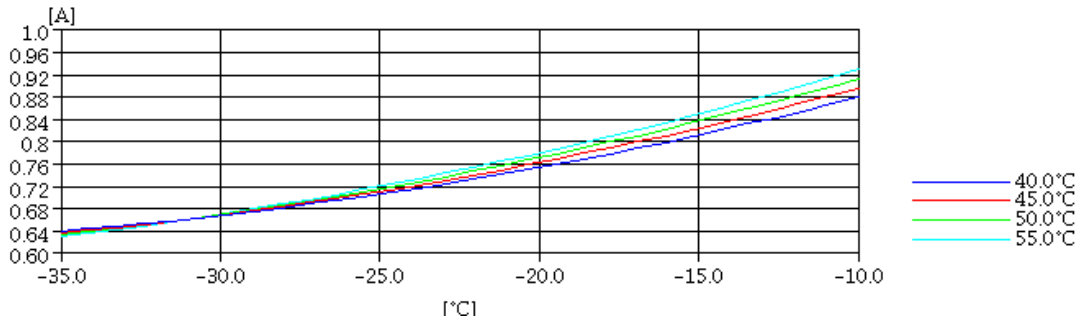
**TEST CONDITIONS**

Voltage/frequency	220V 50Hz
Ambient t. and return	32 °C
Liq.t. entering expan.	Subcooling at 32 °C

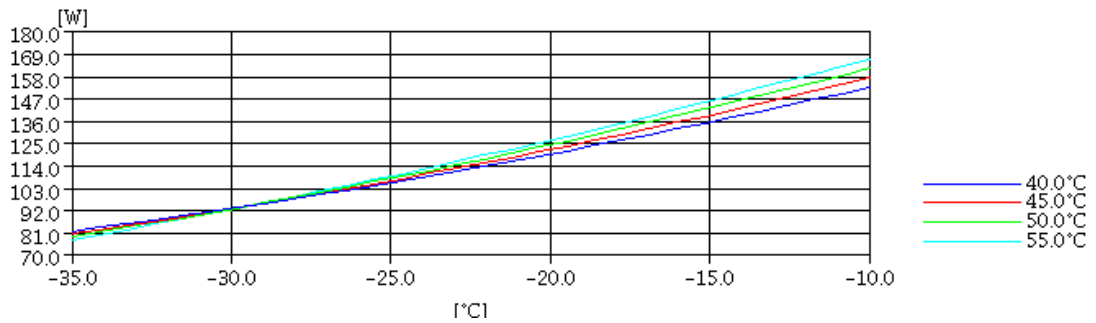
**MASS FLOW**



**INTENSITY**



**CONSUMPTION**



**COOLING CAPACITY**

