

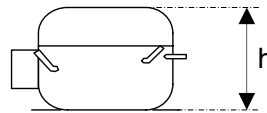
OPERATION:

Application:	L.B.P.	Max. Ambient Temp:	43°C
Refrigerant:	R134a	(1) Max. Steady Discharge Temp:	120°C
Operation:	Capillary	(1,2) Max. Peak Discharge Temp:	135°C
Cooling:	Static	Max. Steady Condensing Temp:	60°C
		(2) Max. Peak Condensing Temp:	70°C
		Max. Winding Temp:	130°C
		Max. Impurities:	30 mg
		Max.Total Compressor Water Content:	100 mg

COMPRESSOR:

Displacement:	5.73 cc	Oil Type:	Ester
Bore:	20.6 mm	(4) Viscosity:	15 cSt
Stroke:	17.2 mm	Suction Muffler:	Semi-direct

(3) Net Wt:	8.2 kg
Case Size:	2 (h = 169.5 mm)
Oil Charge:	160 cc



ELECTRICAL:

Power Supply:	220 - 240V	Motor Type:	RSIR / RSCR *
Voltage Limits:	187 - 264V	Locked Rotor Current:	11.0 / 5.3 A**
Frequency:	50 Hz		
Phase:	1 ph		

Main Winding Resistance at 25°C:	13.7 Ω
Start Winding Resistance at 25°C:	18.3 Ω

* With Optional Run Capacitor

** Maximum current / Measured after 4 seconds

(1) Measured 5cm. from the shell with insulated thermocouples

(2) For transient conditions during 'Pull Down'

(3) Net weight is with oil but without electrics

(4) Measured at 40°C

For rated performance,

the suction line must be connected to the stub marked 'AS' on the attached drawing.

ELECTRICAL COMPONENTS:

ECC Starting Device: K 100-xx
Starting Device: PTC- 8100
(1) Starting Device: PTC - 7100DC
PTC Resistance: 14 Ω

-xx Protector short code

Run Capacitor: 4.0 μF

PROTECTORS: **BDG ¾**

Type **AE 22 FQ x**
Open °C 120 - 130 °C
Close °C 71 - 53 °C
U.T.C 2,11 A 70 °C
Time Check Current 7,5 A
Max. Current 14,0 A
Code (if any) FD

WANBAO

Type **B88 110 xx**
Open °C 105 - 115 °C
Close °C 70 - 52 °C
U.T.C 2,22 A 70 °C
Time Check Current 8,8 A
Max. Current 18,0 A
Code (if any) M9

Alt. protectors: AF 22 FQ x
Code (if any) DC

*BDG 'x' Codes: 6 for terminal boards Mod.89,90
8 for terminal board Mod.91
4 for UH protector with 6.3mm fast-on
5 for UH protector with M3.5 screw*



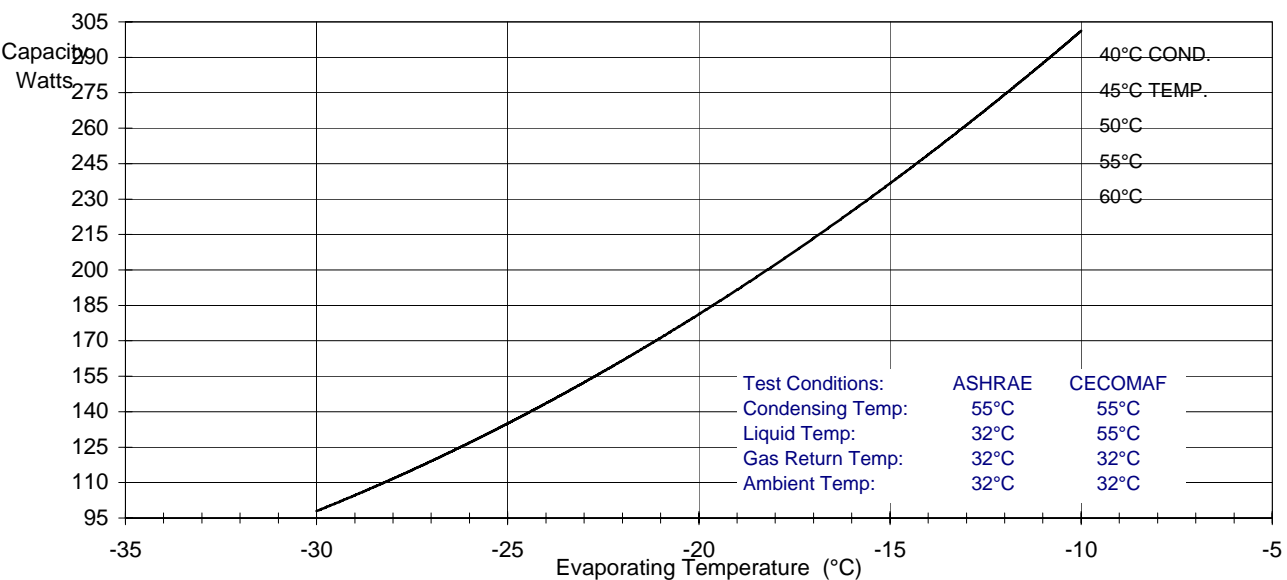
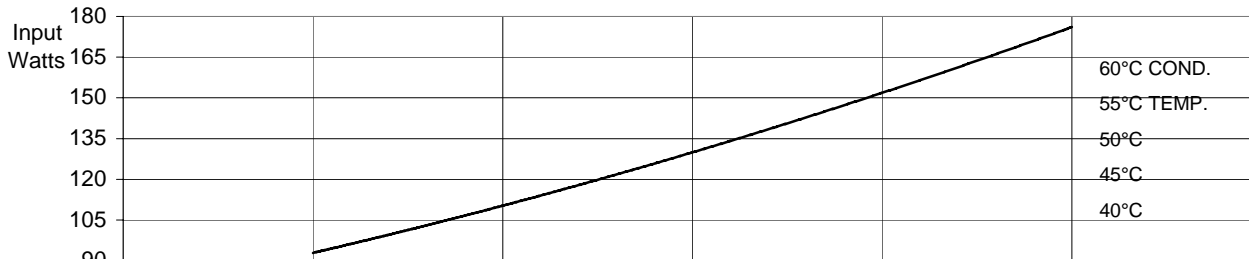
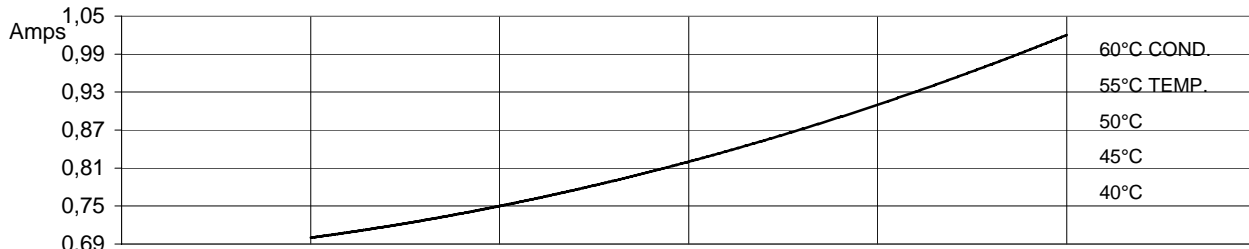
GVY57AA.01

PRODUCT SPECIFICATION

PERFORMANCE:

(Graphs are at ASHRAE conditions)

220V 50Hz Without run capacitor



Test Conditions:	ASHRAE	CECOMAF
Condensing Temp:	55°C	55°C
Liquid Temp:	32°C	55°C
Gas Return Temp:	32°C	32°C
Ambient Temp:	32°C	32°C

	Evaporating Temperature °C	-30	-25	-23,3	-20	-15	-10	
ASHRAE:	Capacity	W	98	135	150	181	237	301
	C.o.P.	W / W	1,04	1,22	1,28	1,39	1,55	1,70
CECOMAF:	Capacity	W	79	109		147	192	243
	C.o.P.	W / W	0,85	0,99		1,13	1,26	1,38
	Input Power	W	93	110	116	130	152	176
	Current	A	0,70	0,75	0,77	0,82	0,91	1,02



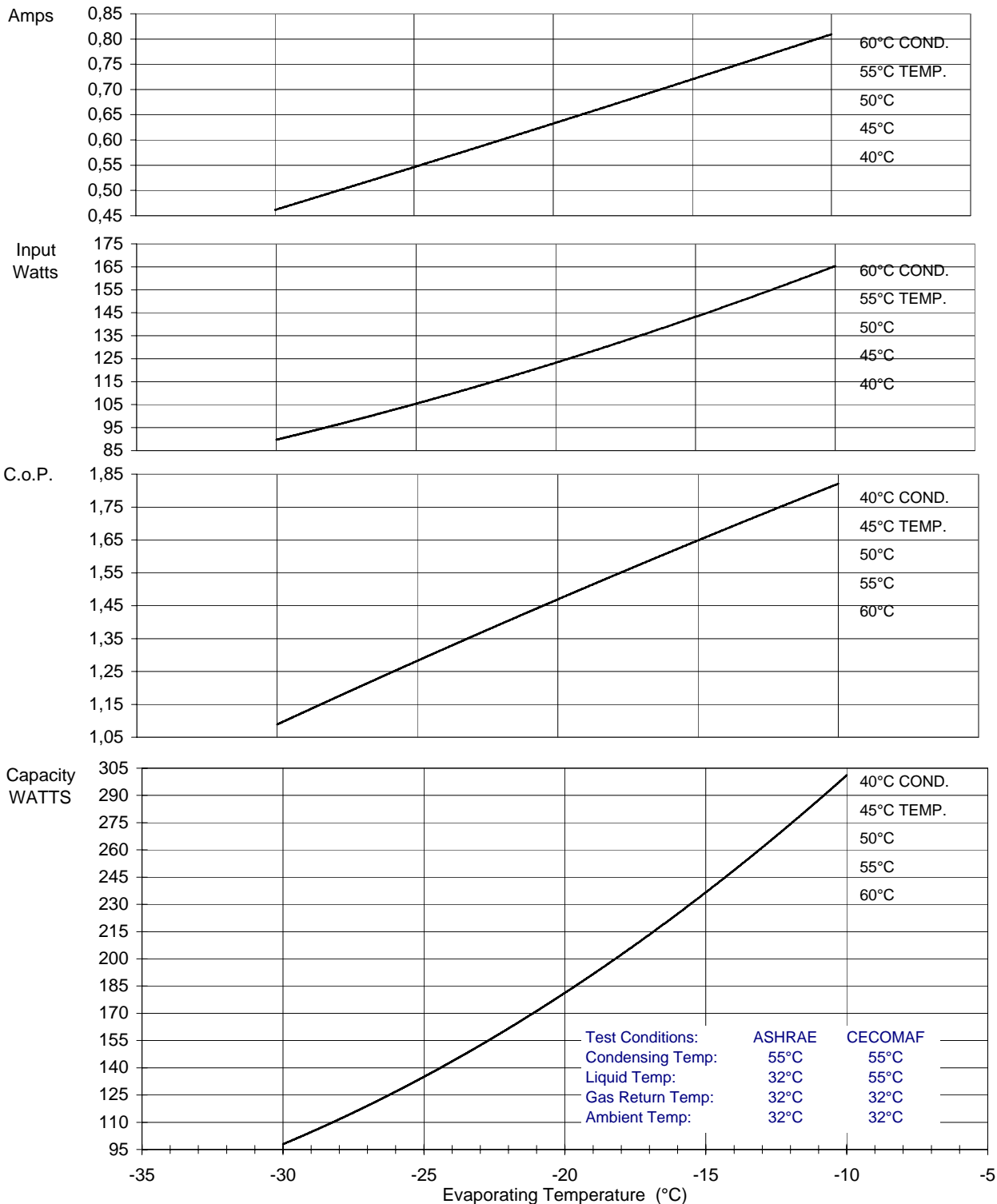
GVY57AA.01

PRODUCT SPECIFICATION

PERFORMANCE:

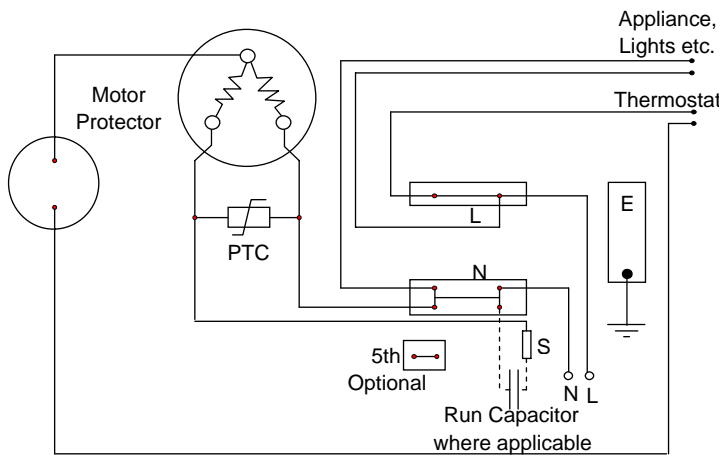
(Graphs are at ASHRAE conditions)

220V 50Hz With run capacitor

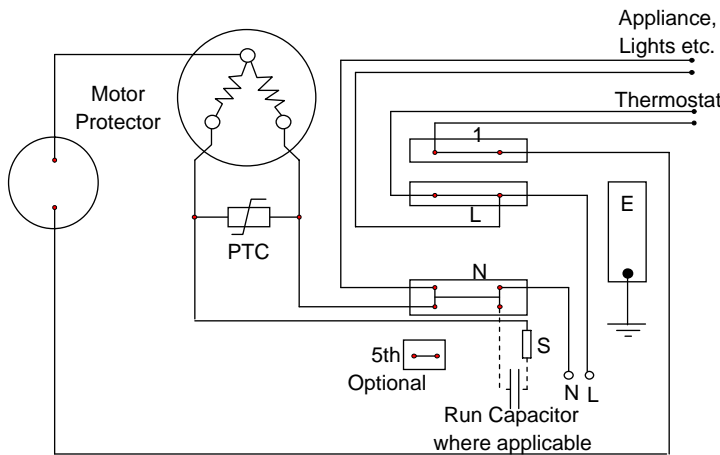


	Evaporating Temperature °C	-30	-25	-23,3	-20	-15	-10	
ASHRAE:	Capacity	W	98	135	150	181	237	301
	C.o.P.	W / W	1,09	1,28	1,35	1,47	1,65	1,82
CECOMAF:	Capacity	W	80	110	125	148	193	245
	C.o.P.	W / W	0,89	1,05	1,10	1,20	1,34	1,48
	Input Power	W	90	105	111	123	144	165
	Current	A	0,46	0,55	0,57	0,63	0,72	0,81

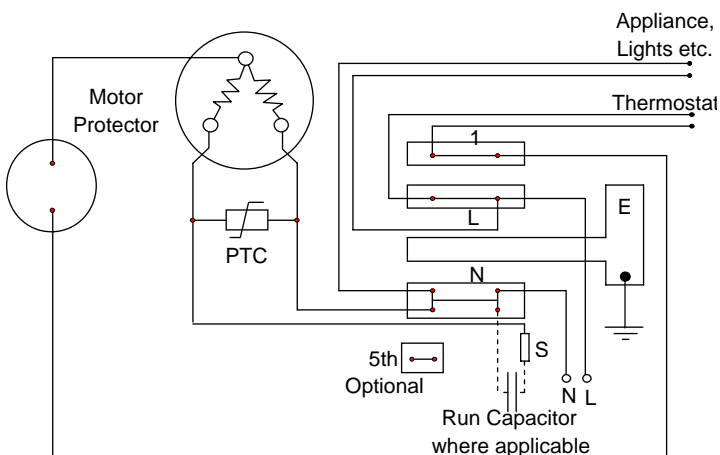
Circuit Diagram for ECC Terminal Board Standard Version



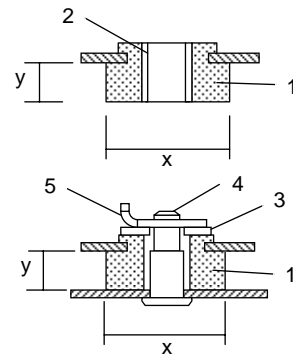
Circuit Diagram for ECC Terminal Board Frontal Version



Circuit Diagram for ECC Terminal Board Rast 5 Version



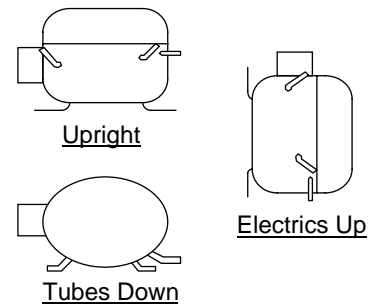
Mounting Accessories



x = 24 or 26 or 28.6mm
y = 9mm or 10.3mm
Other sizes available

1. Rubber grommet
2. Sleeve
3. Washer
4. Steel pin
5. Clip

Recommended Transport Positions when fitted into appliances



Compressor Label

