

COMPRESSOR

Displacement (cm ³)	18.4
Diameter (mm)	34.93
Stroke (mm)	19.2
Net Weight (Kg)	17.2
Oil type	ISO VG 46 ESTER
Oil charge (cm ³)	500

MOTOR

Approximate Power (CV)	7/8
Voltage/Frequency (V/Hz)	220V 50Hz
Voltage range (V)	187-264
Code	82,198
Type	CSR
Phase number	1 PH
Locked rotor current (A)	29.5
Main W. resist. at 25°C (Ω)	2.09
Start W. resist. at 25°C (Ω)	7.95

APPLICATION

Application	High/Mid. back pressure
Refrigerant	R404A
Evaporating (°C)	-25 to 10
Expansion	Capillar/Valve
Comp. cooling	Fan cooled
Max. ambient temp. (°C)	43

NOMINAL PERFORMANCE

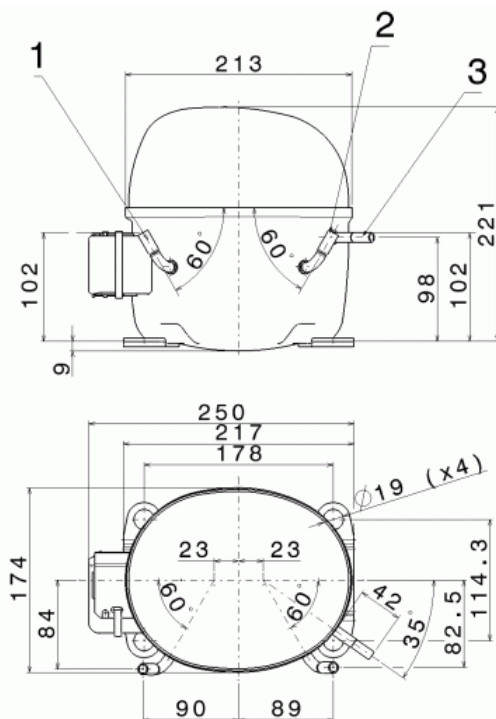
	CYCLE C	CYCLE D
Cooling capacity (kcal/h)	1855	2330
Input power (W)	1210	1245
EER (kcal/Wh)	1.53	1.87
COP (W/W)	1.78	2.17
Current (A)	6.32	6.50

TEST CONDITIONS

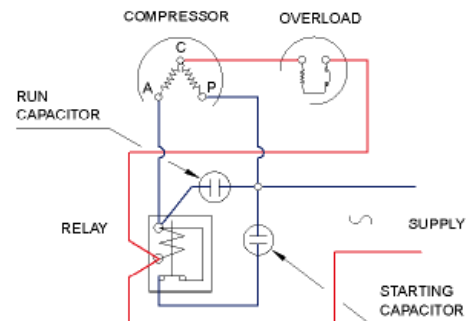
	CYCLE C	CYCLE D
Evaporating temp. (°C)	5.0	7.2
Condensing temp. (°C)	55.0	55.0
Liq.t. entering expan. (°C)	55.0	46.0
Ambient t. and return (°C)	32.0	35.0
Tens/Freq (V/Hz)	220V 50Hz	220V 50Hz

ELECTRICAL COMPONENTS

Relay	3ARR3 10AS3	RVA 3G..
Pick-Up (A)	180-195	180-195
Drop-Out (A)	40-105	40-105
Protector	MRA38128	T0535/G.
Current (A)	17.0	17.0
Time check (seg)	7.5-14	7.5-14
Disc temp. (Open/Close) (°C)	105.0 / 52.0	105.0 / 52.0
Starting capacitor (μF/V)F/V)	47- 56 / 330	
Run capacitor (μF/V)	16 / 400	

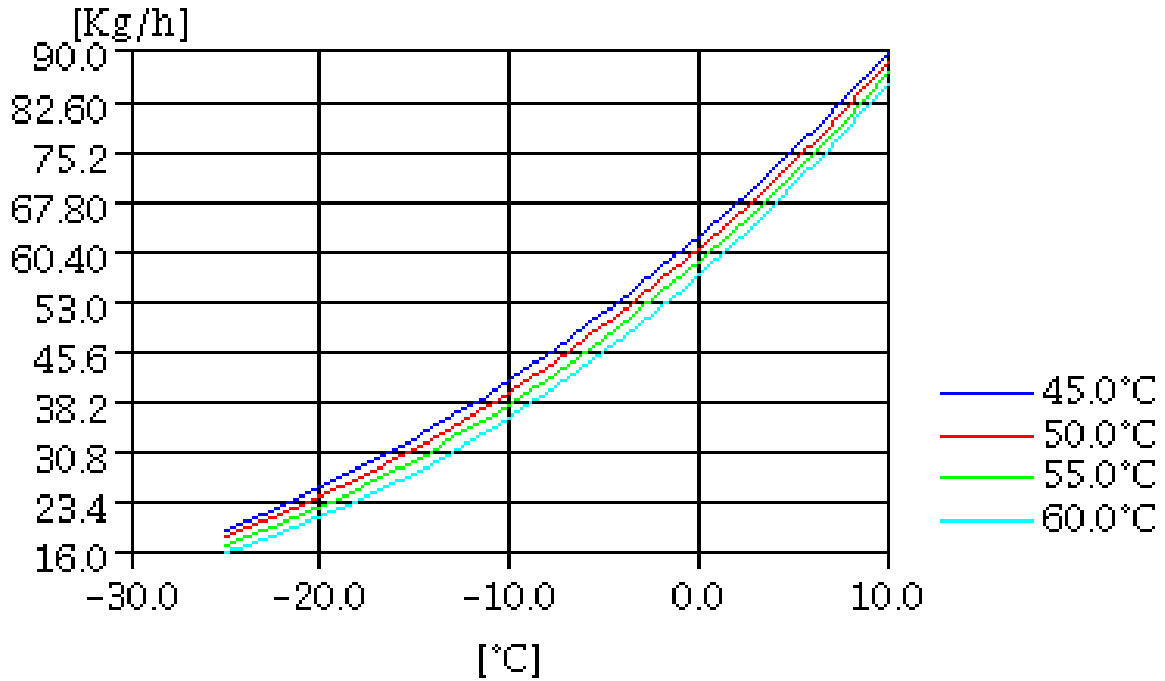
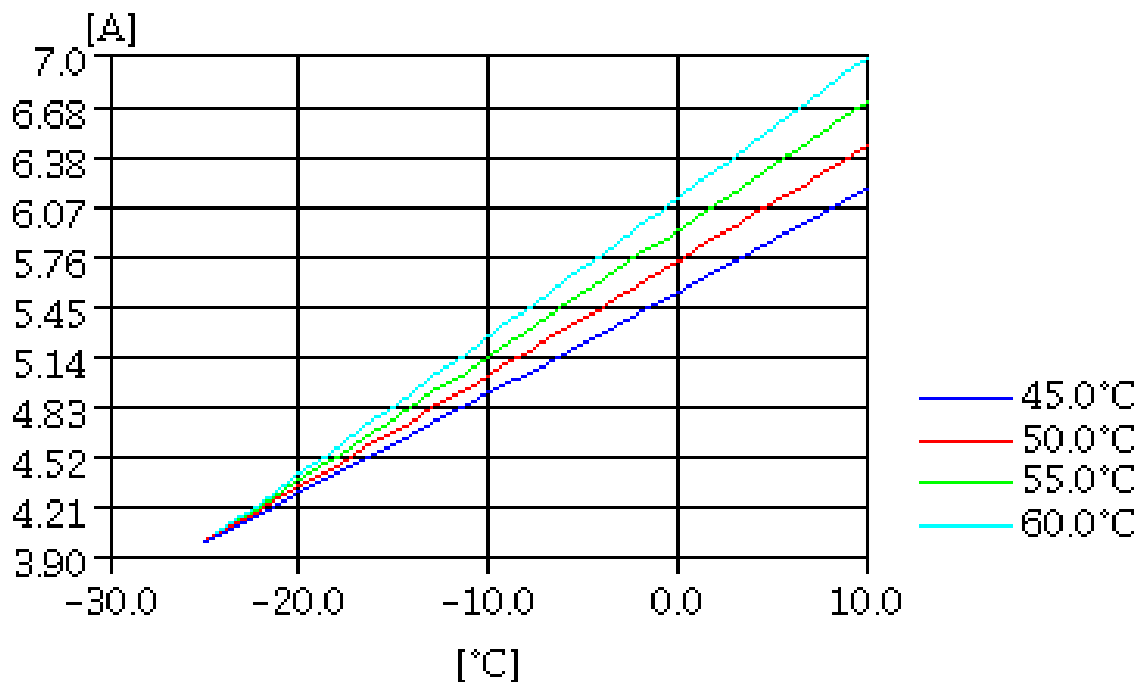
DIMENSIONS AND ELECTRICAL DIAGRAM


	DESIGNATION	INTERNAL DIAM. (MM)
1	Service	9.7
2	Suction	9.7
3	Discharge	6.5

CSR


TEST CONDITIONS

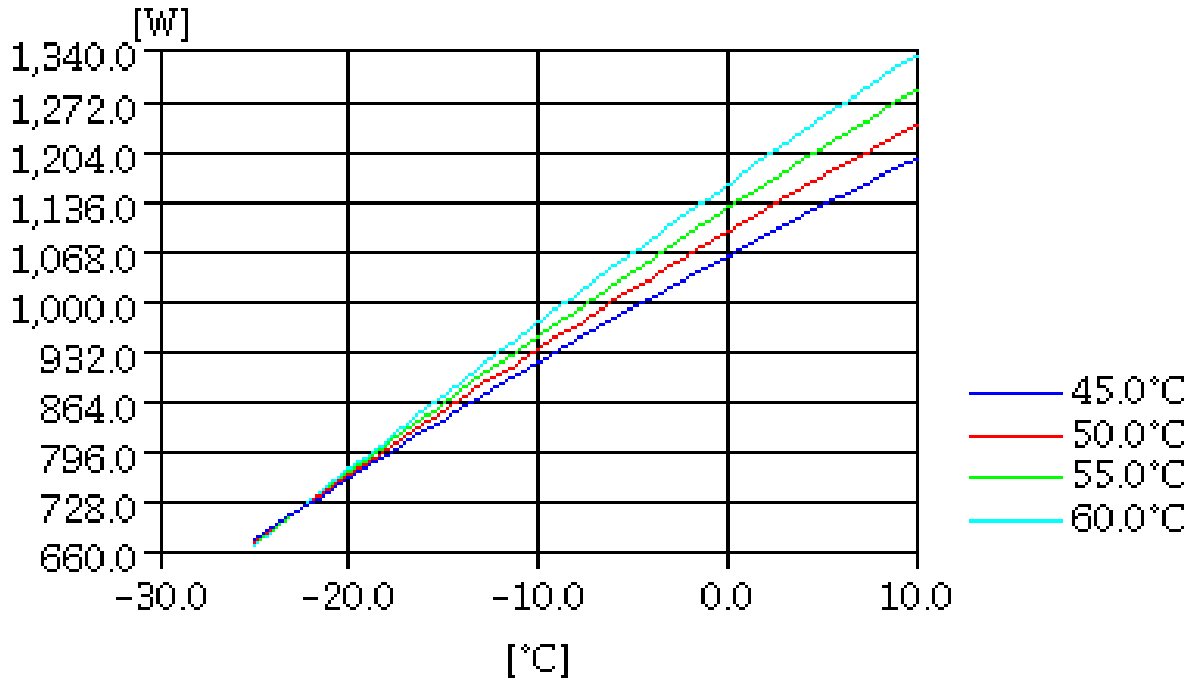
Voltage/frequency	220V 50Hz
Ambient t. and return	35 °C
Liq.t. entering expan.	Subcooling 9 K

MASS FLOW

CONSUMPTION


TEST CONDITIONS

Voltage/frequency	220V 50Hz
Ambient t. and return	35 °C
Liq.t. entering expan.	Subcooling 9 K

INPUT W



COOLING CAPACITY

