

GPT16RG COMPRESSOR

TECHNICAL SPECIFICATION

(200-220V~50Hz)

(220-230V~60Hz)

HUA-YI COMPRESSOR CO., LTD.

2016. 09

INDEX

	page
1、 Compressor Type.....	2
2、 Performance Data.....	2
3、 Running Condition.....	2
4、 Compressor Mechanical Information.....	3
5、 Compressor Shape.....	3
6、 Wiring Diagram.....	4
7、 Assembly of starter and protector.....	5

1. Compressor Type

Compressor model	GPT16RG
Rated voltage/frequency	200-220V~50Hz/220-230V~60Hz
Refrigerant	R134a
Application	High back pressure (HBP)
Cooling method	Fan Cooling
Control device	Capillary tube or Expansion valve
Motor type	CSR
STARTING Capacitor	75 μ F
RUNNING Capacitor	12 μ F

2. Performance Data

Displ.(cm ³)	Capacity(W) $\geq 95\%$	Inp.Pow.(W) $\leq 115\%$	Rated Current(A) $\leq 110\%$	COP (W/W) $\geq 95\%$	condition
16.15	1500	638	3.1	2.35	220V/50Hz
	1695	715	3.4	2.37	220V/60Hz

Testing condition:

Test conditions	HBP
Evaporating Temp.	7.2°C
Ambient Temp.	35°C
Condensing Temp.	54.4°C
Suction Temp.	35°C
Subcooling Temp.	46.1°C

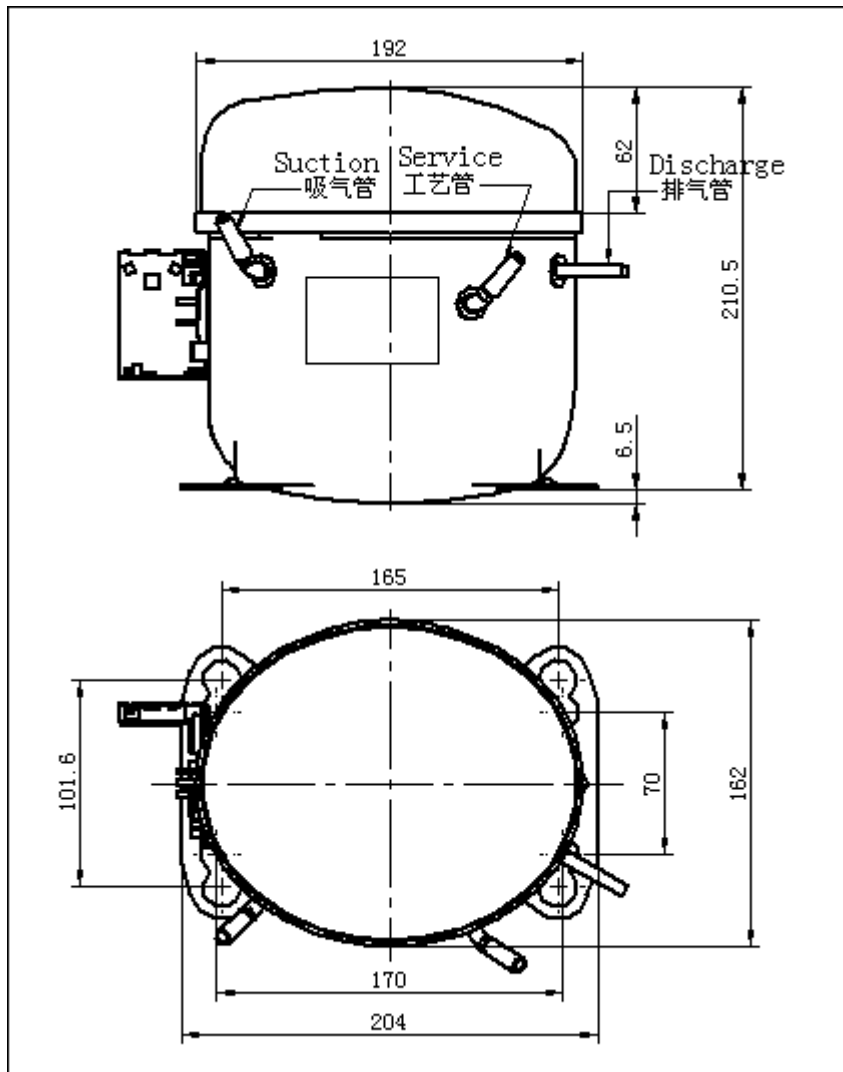
3. Running Condition

Ambient temp.	10~43°C
Evaporating temp.	-15~10°C
Voltage range	170~240V 50Hz/187~253V 60Hz
Max. winding temp.	135°C
Max. shell temp.	95°C
Max. discharge temp.	125°C

4. Compressor Mechanical Information

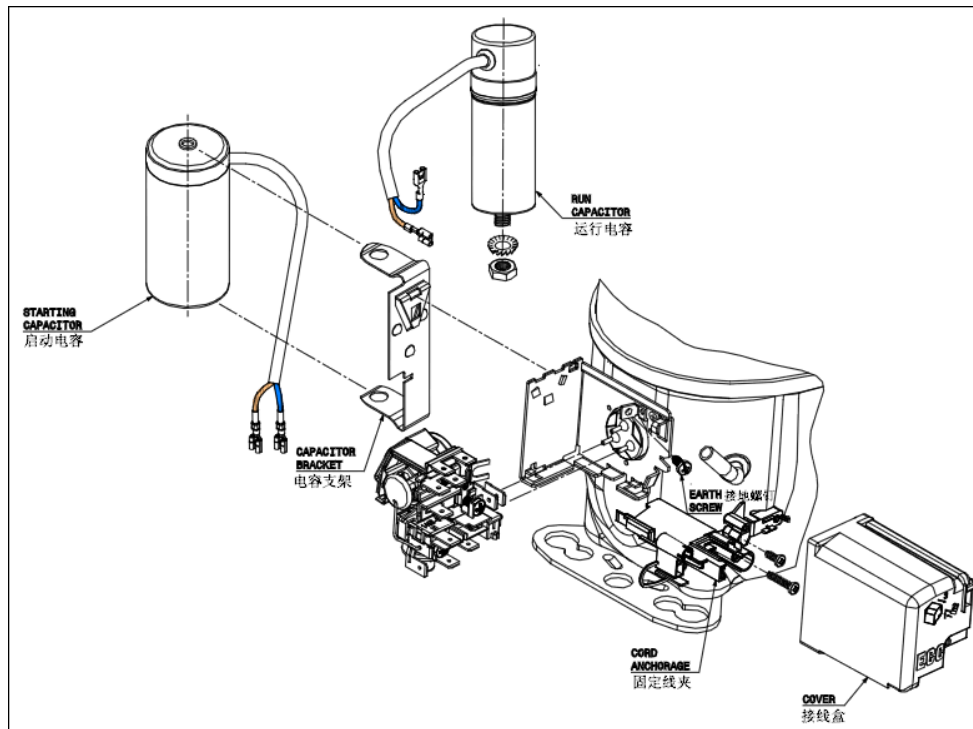
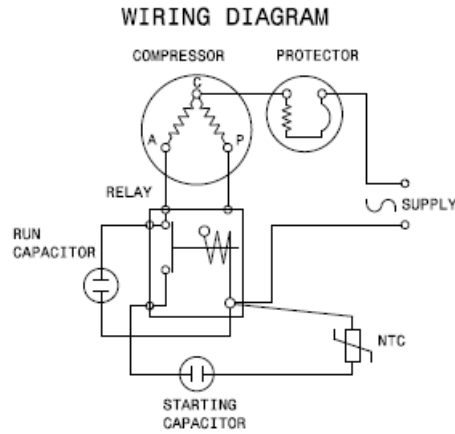
Oil type	POE
Oil charged	400±10ml
Diameter of suction tube (I.D.)	$\Phi 8.1_{0}^{+0.1}$ mm
Diameter of discharge tube(I.D.)	$\Phi 6.5_{0}^{+0.1}$ mm
Diameter of process tube (I.D.)	$\Phi 8.1_{0}^{+0.1}$ mm
Material of suction tube, process tube and discharge tube	copper tube

5. Compressor Shape



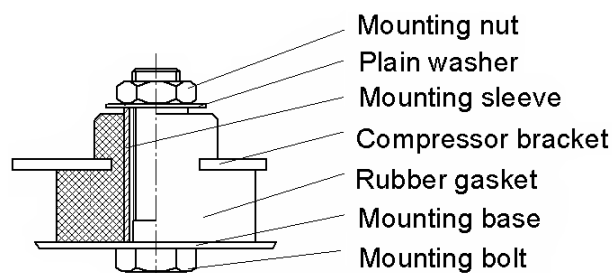
6. Wiring Diagram

CSR:



Note: Each of the starting relay、the thermal protector、the spring tap、the terminal cover and the screw assembly is separately provided by our company.

7. Fixing Of Mounting Bracket And Cabinet Base



8. Assembly of starter and protector

Combined Starter and overload protector:QLZ-11.0A+15/ B113-105

8.1 Starting relay

Model: QLZ-11.0A

Attracting current: $\leq 11.0A$

Type:Starting relay

Release current: $\geq 9.35A$

8.2 Thermal protector

Model: B113-105

Flammability:Anti-flammability

Supplier: Jiangsu Province Changshu

Tian Yin Electromechanical Co.,Ltd

Thermal Protector	Max.T.C Amp.(25℃)	A	11.5
	Trip time	S	7.5~16
	Open temp.	$\pm 5^{\circ}C$	110
	Close temp.	$^{\circ}C$	43-61
	Min. T.C. Amp.(70℃)	A $\pm 15\%$	4.17-5.63

9.Delivery State

No.	Name	Model	Quantity	CODE
1.	Compressor	GPT16RG	1pcs	
2.	<i>MOUNTING ACCESSORIES</i>			
2.1.	Rubber Gasket		4 pcs	E.24.12.201
2.2.	Plain Washer	$\phi 6$	4 pcs	CTE983-2
2.3.	Mounting Sleeve		4 pcs	CTE943-2
2.4.	Mounting Bolt	M6×30	4 pcs	GB5781-86
2.5	Mounting Nut	M6	4 pcs	GB6170-86
2.6	Washer		4 pcs	GB93-87-6
3.	<i>ELECTRICAL ACCESSORIES</i>			
3.1.	Assembly of starter and protector	QLZ-11.0A+15/ B113-105	1 pcs	
3.2	Terminal Cover\cable clamp		1 pcs	T8500375D\T8500467A
3.3	Running capacitor	12 μF 450V	1 pcs	
3.4	Screw Assembly		1 pcs	E. 14. 24. 201
3.5	Capacitor Bracket		1 pcs	1151586
3.6	Self tapping Screw		1 pcs	102369
3.7	Self tapping Screw		1 pcs	102370
3.8	Starting capacitor	75 μF 330V		

Notes:1.All electrical parts and equipment assembly are supplied separately, not installed on the compressor.

2.All electrical parts and equipment assembly according to Delivery states are all provided by our company.

10. Package、Storage and Transportation

Package type	unreusable
Quantity	54 pcs/box
Transportation	By truck or train
Storage	Max. 2 layers
Volume m ³	0.97
Dimension: length×width×height (mm)	1120×820×1060
Main components	Wooden supporter、 foam divider、 plastic sheet、 cardboard cover、 wrapping
Movement	Keep the compressor in normal or vertical position (a short time before compressor installed in the refrigerator).
Trans. test requirement	No allowable compressor's damage and performance loss.

11. Technical Items

1. After pulling off rubber plugs from the compressor tubes, please connect the compressor to the refrigeration system within 5 minutes. It is advisable to take off the first plug from process tube. No dust or humidity in the air is permitted to enter the compressor.
2. Earth connection should be fixed permanently and reliably.
3. The compressor must be mounted horizontally without tilting an angle more than 5° .
4. Maximum operating ambient temperature is at 43℃.
5. When the compressor starts, balance pressure inside refrigeration system must be less than 0.5Mpa (Absolute).
6. The compressor must not be restarted unless at an interval of more than 5 minutes.
7. Please keep the compressor always vertically and never upset it during transportation while avoiding any vibration and shock.
8. Please store the compressor in a dry and ventilated place and keep it away from any humidity.
9. Please follow the transportation warning marks on the package for layer limitation. Do not roll the whole packages when loading or unloading.
10. Storage expiry is 6 months from the date of production. If it expired, please check the nitrogen pressure inside compressor and recharge it when it is necessary.