



Kulthorn Group

HERMETIC

COMPRESSORS

CATALOGUE

WORLD CLASS PRODUCTS FOR REFRIGERATION



KULTHORN 672601-01234567
80147826 **C-BF175L6Z**
200-220V~ 50Hz 1PH
220V~ 50Hz R134a
27049 TIS 812-2548 IPX0 KPC

840603-00007217
80347186 **C-ON40L6P-1**
220-230V~ 60Hz 1PH
220V~ 50Hz R134a
11078 MADE IN THAILAND KPC



Kulthorn Premier

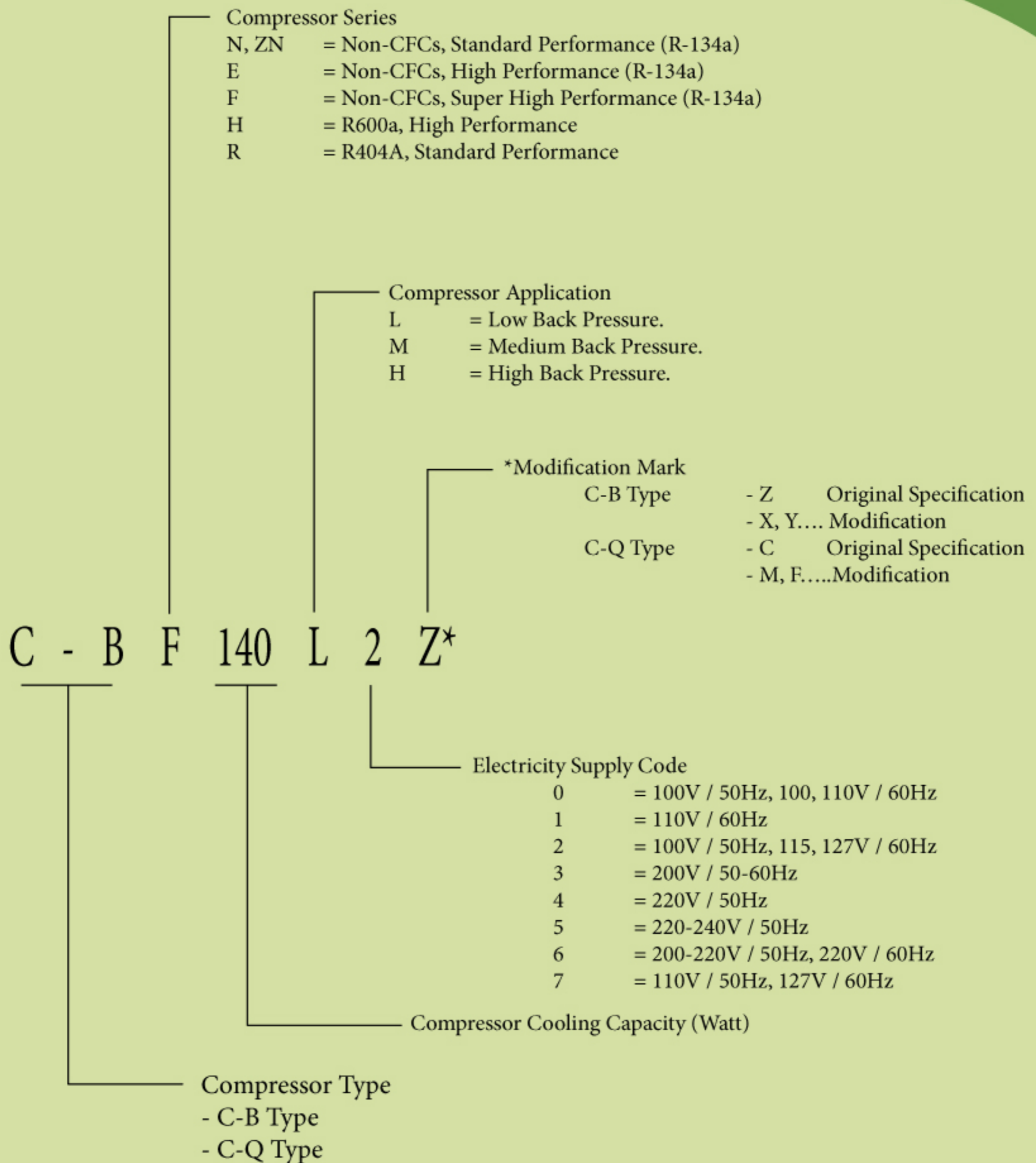
Company Limited

Company History

Name:	Kulthorn Premier Company Limited (KPC)	
Established:	December 1982	
Registered Capital:	Baht 1,125 Million	
Address:	446/3 Moo 9 Chachoengsao – Nakornratchasima Road, Kabinburi Industrial Estate, Nongki, Kabinburi, Prachinburi 25100, Thailand	
Telephone:	(037) 204835, 455516	
Fax:	(037) 455525, 204844	
E-mail:	sales_kpc@kulthorn.com kamjorn@kulthorn.com	
Employees:	900 persons	
Land area:	91 rai (145,600 m ²)	
Building of area:	41,500 m ²	
Business Products:	Hermetic Reciprocating Compressor (Scotch Yoke Mechanism) (Product under license SANYO Japan) Size 30-250 Watt. Compressor series / Refrigerant C-BN, C-BZN, C-BE, C-BF / R-134a C-QN / R-134a C-BH / R-600a C-BR / R-404A	
Shareholder:	Kulthorn Kirby Public Company Limited 100%	
Customers:	Domestic – Haier, Sanyo, Toshiba, Hitachi, Daewoo, Samsung, Sanden, etc. Total = 35% Export – Daewoo, Sanyo Group, GE, Sanden, Haier, Singer, Videocon, Toshiba, etc. Total = 65%	
Quality System:	ISO 9001:2000 Certified by TUV Nord	Year 2003
	Q-Mark Certified by F.T.I.	Year 2007
Product Safety Standard:	UL File no. SA32100 Certified by UL TUV Certified by TUV Reinland CB Certified by Intertek & TUV Reinland Apply the CCC Certification in China CQC Organization TIS.812-2548 Motor – Compressor (Safety) Certified by TISI	
Environment Standard:	ISO 14001:1996 Certified by SGS	Year 2004
	RoHs Certified by SGS	Year 2006
Occupational Health & Safety:	TIS 18001 / OHSAS 18001 Certified by SGS Year 2004	



Model Number System



Test Conditions of Compressor Capacity

Test Standard	LBP (L1)	MBP (M1)	HBP (H1)
Evaporating Temp.	-23.3 °C (-10 °F)	-6.7 °C (20 °F)	7.2 °C (45 °F)
Condensing Temp.	54.4 °C (130 °F)	54.4 °C (130 °F)	54.4 °C (130 °F)
Suction Gas Temp.	32.2 °C (90 °F)	35 °C (95 °F)	35 °C (95 °F)
Liquid Temp.	32.2 °C (90 °F)	46.1 °C (115 °F)	46.1 °C (115 °F)
Ambient Temp.	32.2 °C (90 °F)	35 °C (95 °F)	35 °C (95 °F)

C-Q Type

Models	App.	Motor Type	Disp. (CC)	Cooling (w)		Cooling (Btu)		COP (w/w)		EER (Btu/w)		Start Cap		Run Cap		Dim. "H1"
				50Hz	60Hz	50Hz	60Hz	50Hz	60Hz	50Hz	60Hz	mF	vac	mF	vac	

C-QN Series

R134a

100V/50Hz., 60Hz.

C-QN30L0*	LBP	RSIR	1.79	31	40	106	137	0.62	0.73	2.12	2.49	**	**	**	**	154
C-QN40L0*	LBP	RSIR	2.13	45	53	154	181	0.72	0.85	2.46	2.90	**	**	**	**	154
C-QN50L0*	LBP	RSIR	2.45	56	67	191	229	0.92	0.97	3.14	3.31	**	**	**	**	167
C-QN60L0*	LBP	RSIR	2.77	65	78	222	266	0.92	1.03	3.14	3.52	**	**	**	**	167
C-QN75L0*	LBP	RSIR	3.58	83	101	283	345	0.98	1.09	3.34	3.72	**	**	**	**	167
C-QN90L0*	LBP	RSIR	3.92	93	113	317	386	1.00	1.11	3.41	3.79	**	**	**	**	177

110V/60Hz.

C-QN30L1*	LBP	RSIR	1.79	**	40	**	137	**	0.73	**	2.49	**	**	**	**	154
C-QN40L1*	LBP	RSIR	2.13	**	53	**	181	**	0.85	**	2.90	**	**	**	**	154
C-QN50L1*	LBP	RSIR	2.45	**	67	**	229	**	0.97	**	3.31	**	**	**	**	167
C-QN60L1*	LBP	RSIR	2.77	**	78	**	266	**	1.03	**	3.52	**	**	**	**	167
C-QN75L1*	LBP	RSIR	3.58	**	101	**	345	**	1.09	**	3.72	**	**	**	**	167
C-QN90L1*	LBP	RSIR	3.92	**	113	**	386	**	1.11	**	3.79	**	**	**	**	177

100V/50Hz., 115-127V/60Hz.

C-QN30L2*	LBP	RSIR	1.79	31	40	106	137	0.62	0.73	2.12	2.49	**	**	**	**	154
C-QN40L2*	LBP	RSIR	2.13	45	53	154	181	0.72	0.85	2.46	2.90	**	**	**	**	154
C-QN50L2*	LBP	RSIR	2.45	56	67	191	229	0.92	0.97	3.14	3.31	**	**	**	**	167
C-QN60L2*	LBP	RSIR	2.77	65	78	222	266	0.92	1.03	3.14	3.52	**	**	**	**	167
C-QN75L2*	LBP	RSIR	3.58	83	101	283	345	0.98	1.09	3.34	3.72	**	**	**	**	167
C-QN90L2*	LBP	RSIR	3.92	93	113	317	386	1.00	1.11	3.41	3.79	**	**	**	**	177

220-240V/50Hz.

C-QN30L5*	LBP	RSIR	1.79	31	**	106	**	0.62	**	2.12	**	**	**	**	**	154
C-QN40L5*	LBP	RSIR	2.13	45	**	154	**	0.72	**	2.46	**	**	**	**	**	154
C-QN50L5*	LBP	RSIR	2.45	56	**	191	**	0.92	**	3.14	**	**	**	**	**	167
C-QN60L5*	LBP	RSIR	2.77	65	**	222	**	0.92	**	3.14	**	**	**	**	**	167
C-QN75L5*	LBP	RSIR	3.58	83	**	283	**	0.98	**	3.34	**	**	**	**	**	167
C-QN90L5*	LBP	RSIR	3.92	93	**	317	**	1.00	**	3.41	**	**	**	**	**	177

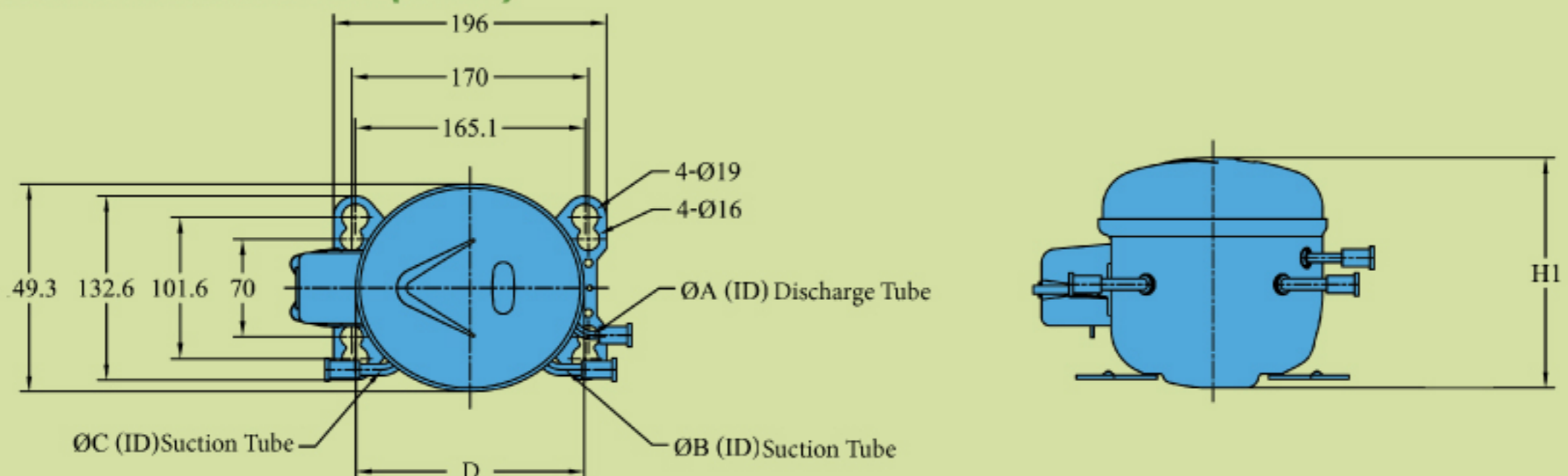
200-220V/50Hz., 220V/60Hz.

C-QN30L6*	LBP	RSIR	1.79	31	40	106	137	0.62	0.73	2.12	2.49	**	**	**	**	154
C-QN40L6*	LBP	RSIR	2.13	45	53	154	181	0.72	0.85	2.46	2.90	**	**	**	**	154
C-QN50L6*	LBP	RSIR	2.45	56	67	191	229	0.92	0.97	3.14	3.31	**	**	**	**	167
C-QN60L6*	LBP	RSIR	2.77	65	78	222	266	0.92	1.03	3.14	3.52	**	**	**	**	167
C-QN75L6*	LBP	RSIR	3.58	83	101	283	345	0.98	1.09	3.34	3.72	**	**	**	**	167
C-QN90L6*	LBP	RSIR	3.92	93	113	317	386	1.00	1.11	3.41	3.79	**	**	**	**	177

127V/60Hz.

C-QN30L7*	LBP	RSIR	1.79	**	40	**	137	**	0.73	**	2.49	**	**	**	**	154
C-QN40L7*	LBP	RSIR	2.13	**	53	**	181	**	0.85	**	2.90	**	**	**	**	154
C-QN50L7*	LBP	RSIR	2.45	**	67	**	229	**	0.97	**	3.31	**	**	**	**	167
C-QN60L7*	LBP	RSIR	2.77	**	78	**	266	**	1.03	**	3.52	**	**	**	**	167
C-QN75L7*	LBP	RSIR	3.58	**	101	**	345	**	1.09	**	3.72	**	**	**	**	167
C-QN90L7*	LBP	RSIR	3.92	**	113	**	386	**	1.11	**	3.79	**	**	**	**	177

General Dimension (mm.)



Comp. Series	Output (W)	Dimensions (mm.)					Weight with oil (Kg)
		H1	D	ØA (ID)	ØB (ID)	ØC (ID)	
C-QN	30, 40	154	164	4.9	6.5	6.5	5.1 - 5.3
	50, 60, 75	167					5.5 - 6.2
	90	177					6.3 - 6.9

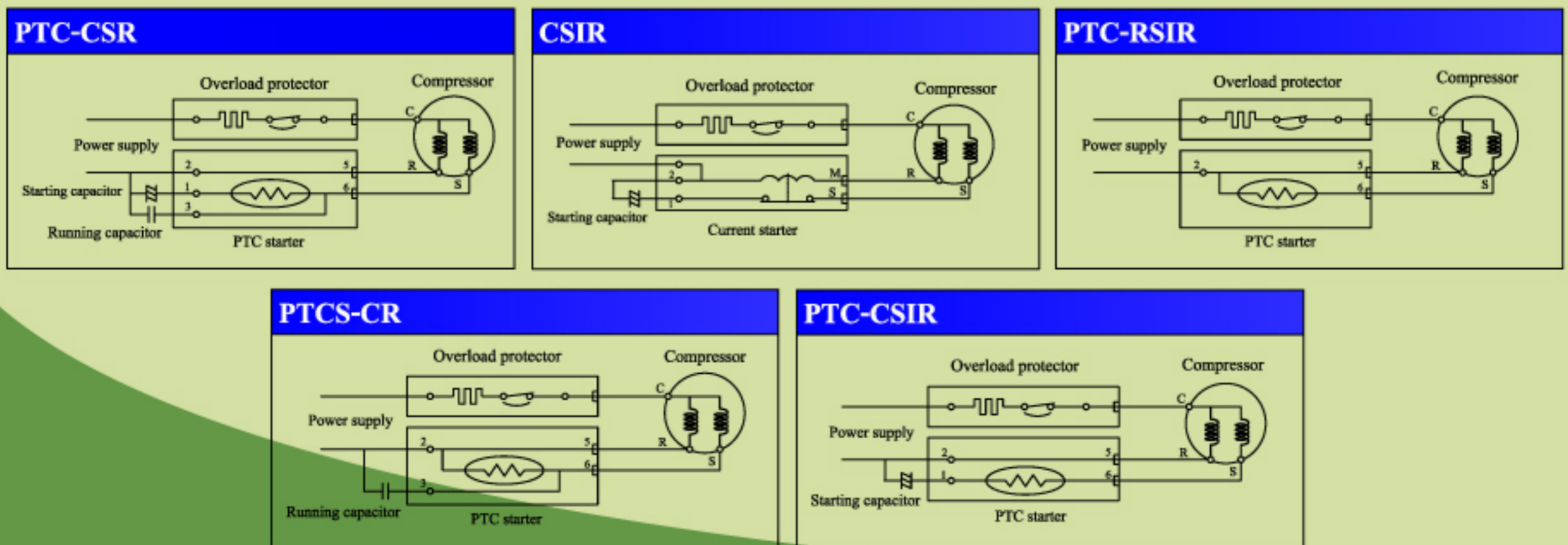
C-B Type

Models	App.	Motor Type	Disp. (CC)	Cooling (w)		Cooling (Btu)		COP (w/w)		EER (Btu/w)		Start Cap		Run Cap		Dim. "H1"
				50Hz	60Hz	50Hz	60Hz	50Hz	60Hz	50Hz	60Hz	mF	vac	mF	vac	
C-BZN Series (Standard Performance)																
100V/50Hz., 60Hz.																
C-BZN50L0*	LBP	RSIR	2.55	50	62	171	212	0.87	0.93	2.97	3.17	**	**	**	**	175
C-BZN90L0*	LBP	RSIR/CSIR	4.16	99	123	338	420	1.12	1.16	3.82	3.96	100	125	**	**	175
C-BZN110L0*	LBP	RSIR/CSIR	5.20	140	168	478	573	1.19	1.23	4.06	4.20	75	125	**	**	175
C-BZN150L0*	LBP	RSIR/CSIR	6.65	190	230	648	785	1.40	1.45	4.78	4.95	75	125	**	**	188
C-BZN160L0*	LBP	CSIR	6.79	194	233	662	795	1.40	1.45	4.78	4.95	150	160	**	**	188
C-BZN175L0*	LBP	CSIR	7.24	208	245	710	836	1.34	1.38	4.57	4.71	100	125	**	**	195
C-BZN200L0*	LBP	CSIR	8.37	241	293	822	1000	1.31	1.36	4.47	4.64	75	125	**	**	195
110V/60Hz.																
C-BZN50L1*	LBP	RSIR	2.55	**	62	**	212	**	0.93	**	3.17	**	**	**	**	175
C-BZN90L1*	LBP	RSIR/CSIR	4.16	**	123	**	420	**	1.16	**	3.96	100	125	**	**	175
C-BZN110L1*	LBP	RSIR/CSIR	5.20	**	168	**	573	**	1.23	**	4.20	75	125	**	**	175
C-BZN150L1*	LBP	RSIR/CSIR	6.65	**	230	**	785	**	1.45	**	4.95	75	125	**	**	188
C-BZN160L1*	LBP	CSIR	6.79	**	233	**	795	**	1.45	**	4.95	150	160	**	**	188
C-BZN175L1*	LBP	CSIR	7.24	**	245	**	836	**	1.38	**	4.71	100	125	**	**	195
C-BZN200L1*	LBP	CSIR	8.37	**	293	**	1000	**	1.36	**	4.64	75	125	**	**	195
100V/50Hz., 115-127V/60Hz.																
C-BZN60L2*	LBP	RSIR	2.98	64	78	218	266	0.95	1.02	3.24	3.48	**	**	**	**	175
C-BZN75L2*	LBP	RSIR	3.64	80	99	273	338	0.99	1.06	3.38	3.62	**	**	**	**	175
C-BZN90L2*	LBP	RSIR	4.16	99	123	338	420	1.12	1.16	3.82	3.96	**	**	**	**	175
C-BZN100L2*	LBP	RSIR	4.50	108	130	369	444	1.13	1.18	3.86	4.03	**	**	**	**	175
C-BZN120L2*	LBP	RSIR	5.70	154	188	526	642	1.28	1.33	4.37	4.54	**	**	**	**	188
C-BZN140L2*	LBP	RSIR	6.08	168	192	573	655	1.34	1.36	4.57	4.64	**	**	**	**	188
C-BZN175L2*	LBP	RSCR	7.24	208	245	710	836	1.43	1.47	4.88	5.02	**	**	15	200	195
220-240V/50Hz.																
C-BZN50L5*	LBP	RSIR	2.55	50	**	171	**	0.87	**	2.97	**	**	**	**	**	175
C-BZN60L5*	LBP	RSIR	2.98	64	**	218	**	0.95	**	3.24	**	**	**	**	**	175
C-BZN75L5*	LBP	RSIR	3.64	80	**	273	**	0.99	**	3.38	**	**	**	**	**	175
C-BZN90L5*	LBP	RSIR/CSIR	4.16	99	**	338	**	1.12	**	3.82	**	40	160	**	**	175
C-BZN100L5*	LBP	RSIR	4.50	108	**	369	**	1.13	**	3.86	**	**	**	**	**	175
C-BZN110L5*	LBP	RSIR	5.20	140	**	478	**	1.19	**	4.06	**	**	**	**	**	175
C-BZN120L5*	LBP	RSIR	5.70	154	**	526	**	1.28	**	4.37	**	**	**	**	**	188
C-BZN120L5*	LBP	RSCR	5.70	154	**	526	**	1.38	**	4.71	**	**	**	3.5	350	188
C-BZN140L5*	LBP	RSIR	6.08	168	**	573	**	1.34	**	4.57	**	**	**	**	**	188
C-BZN140L5*	LBP	RSCR	6.08	168	**	573	**	1.43	**	4.88	**	**	**	3.5	350	188
C-BZN150L5*	LBP	RSIR/CSIR	6.65	190	**	648	**	1.40	**	4.78	**	40	160	**	**	188
C-BZN150L5*	LBP	RSCR	6.65	190	**	648	**	1.50	**	5.12	**	**	**	3.5	350	188
C-BZN160L5*	LBP	RSIR	6.79	194	**	662	**	1.40	**	4.78	**	**	**	**	**	188
C-BZN175L5*	LBP	RSIR/CSIR	7.24	208	**	710	**	1.34	**	4.57	**	40	160	**	**	195
C-BZN175L5*	LBP	RSCR	7.24	208	**	710	**	1.43	**	4.88	**	**	**	3.5	350	195
C-BZN200L5*	LBP	RSIR/CSIR	8.37	241	**	822	**	1.31	**	4.47	**	40	160	**	**	195
C-BZN200L5*	LBP	RSCR	8.37	241	**	822	**	1.41	**	4.81	**	**	**	3.5	350	195
200-220V/50Hz., 220V/60Hz.																
C-BZN50L6*	LBP	RSIR	2.55	50	62	171	212	0.87	0.93	2.97	3.17	**	**	**	**	175
C-BZN60L6*	LBP	RSIR	2.98	64	78	218	266	0.95	1.02	3.24	3.48	**	**	**	**	175
C-BZN75L6*	LBP	RSIR	3.64	80	99	273	338	0.99	1.06	3.38	3.62	**	**	**	**	175
C-BZN90L6*	LBP	RSIR	4.16	99	123	338	420	1.12	1.16	3.82	3.96	**	**	**	**	175
C-BZN100L6*	LBP	RSIR/CSIR	4.50	108	130	369	444	1.13	1.18	3.86	4.03	40	160	**	**	175
C-BZN110L6*	LBP	RSIR/CSIR	5.20	140	168	478	573	1.19	1.23	4.06	4.20	40	160	**	**	175
C-BZN120L6*	LBP	RSIR/CSIR	5.70	154	188	526	642	1.28	1.33	4.37	4.54	40	160	**	**	188
C-BZN120L6*	LBP	RSCR	5.70	154	188	526	642	1.38	1.43	4.71	4.88	**	**	3.5	350	188
C-BZN140L6*	LBP	RSIR	6.08	168	192	573	655	1.34	1.36	4.57	4.64	**	**	**	**	188
C-BZN140L6*	LBP	RSCR	6.08	168	192	573	655	1.43	1.46	4.88	4.98	**	**	3.5	350	188
C-BZN150L6*	LBP	RSIR	6.65	190	230	648	785	1.40	1.45	4.78	4.95	**	**	**	**	188
C-BZN150L6*	LBP	RSCR	6.65	190	230	648	785	1.50	1.53	5.12	5.22	**	**	3.5	350	188
C-BZN160L6*	LBP	RSIR	6.79	194	233	662	795	1.40	1.45	4.78	4.95	**	**	**	**	188
C-BZN175L6*	LBP	RSIR	7.24	208	245	710	836	1.34	1.38	4.57	4.71	**	**	**	**	195
C-BZN175L6*	LBP	RSCR	7.24	208	245	710	836	1.43	1.47	4.88	5.02	**	**	3.5	350	195
C-BZN200L6*	LBP	RSIR	8.37	241	293	822	1000	1.31	1.36	4.47	4.64	**	**	3.5	350	195
C-BZN200L6*	LBP	RSCR	8.37	241	293	822	1000	1.41	1.45	4.81	4.95	**	**	3.5	350	195
110V/50Hz., 127V/60Hz.																
C-BZN60L7*	LBP	RSIR/CSIR	2.98	64	78	218	266	0.95	1.02	3.24	3.48	75	125	**	**	175
C-BZN100L7*	LBP	RSIR/CSIR	4.50	108	130	369	444	1.13	1.18	3.86	4.03	75	125	**	**	175
C-BZN150L7*	LBP	RSIR/CSIR	6.65	190	230	648	785	1.40	1.45	4.78	4.95	75	125	**	**	188
C-BZN175L7*	LBP	CSIR	7.24	208	245	710	836	1.34	1.38	4.57	4.71	75	125	**	**	195

C-B Type

Models	App.	Motor Type	Disp. (CC)	Cooling (w)		Cooling (Btu)		COP (w/w)		EER (Btu/w)		Start Cap		Run Cap		Dim. "H1"
				50Hz	60Hz	50Hz	60Hz	50Hz	60Hz	50Hz	60Hz	mF	vac	mF	vac	
C-BE Series (High Performance)															R134a	
100V/50Hz., 60Hz.																
C-BE50L0*	LBP	RSIR	2.55	52	64	177	218	1.07	1.10	3.65	3.75	**	**	**	**	178
C-BE50L0*	LBP	RSCR	2.55	52	64	177	218	1.16	1.19	3.96	4.06	**	**	8	180	178
C-BE90L0*	LBP	RSIR	4.16	103	125	352	427	1.30	1.35	4.44	4.61	**	**	**	**	178
C-BE90L0*	LBP	RSCR	4.16	103	125	352	427	1.39	1.45	4.74	4.95	**	**	12	200	178
C-BE175L0*	LBP	CSIR	7.24	218	258	744	880	1.45	1.50	4.95	5.12	75	125	**	**	197
C-BE200L0*	LBP	CSIR	8.37	252	303	860	1034	1.45	1.50	4.95	5.12	75	125	**	**	197
C-BE200L0*	LBP	RSCR	8.37	252	303	860	1034	1.52	1.57	5.19	5.36	**	**	16	180	197
110V/60Hz.																
C-BE50L1*	LBP	RSIR	2.55	**	64	**	218	**	1.10	**	3.75	**	**	**	**	178
C-BE50L1*	LBP	RSCR	2.55	**	64	**	218	**	1.19	**	4.06	**	**	8	180	178
C-BE90L1*	LBP	RSIR	4.16	**	125	**	427	**	1.35	**	4.61	**	**	**	**	178
C-BE90L1*	LBP	RSCR	4.16	**	125	**	427	**	1.45	**	4.95	**	**	12	200	178
C-BE175L1*	LBP	CSIR	7.24	**	258	**	880	**	1.50	**	5.12	75	125	**	**	197
C-BE200L1*	LBP	CSIR	8.37	**	303	**	1034	**	1.50	**	5.12	75	125	**	**	197
C-BE200L1*	LBP	RSCR	8.37	**	303	**	1034	**	1.57	**	5.36	**	**	16	180	197
100V/50Hz., 115-127V/60Hz.																
C-BE100L2*	LBP	RSIR	4.50	112	138	382	471	1.30	1.35	4.44	4.61	**	**	**	**	178
C-BE100L2*	LBP	RSCR	4.50	112	138	382	471	1.39	1.45	4.74	4.95	**	**	12	180	178
C-BE110L2*	LBP	RSCR	5.20	149	178	508	607	1.41	1.52	4.81	5.19	**	**	12	180	178
C-BE120L2*	LBP	RSCR	5.70	161	194	549	662	1.40	1.54	4.78	5.26	**	**	12	180	188
C-BE140L2*	LBP	RSCR	6.08	178	212	607	723	1.58	1.63	5.39	5.56	**	**	14	220	188
C-BE175L2*	LBP	RSCR	7.24	218	258	744	880	1.52	1.57	5.19	5.36	**	**	15	180	197
220-240V/50Hz.																
C-BE75L5*	LBP	RSIR	3.64	82	**	280	**	1.22	**	4.16	**	**	**	**	**	178
C-BE75L5*	LBP	RSCR	3.64	82	**	280	**	1.31	**	4.47	**	**	**	3.5	350	178
C-BE90L5*	LBP	RSIR	4.16	103	**	352	**	1.30	**	4.44	**	**	**	**	**	178
C-BE90L5*	LBP	RSCR	4.16	103	**	352	**	1.39	**	4.74	**	**	**	3.5	350	178
C-BE100L5*	LBP	RSIR	4.50	112	**	382	**	1.30	**	4.44	**	**	**	**	**	178
C-BE110L5*	LBP	RSIR/CSIR	5.20	149	**	508	**	1.31	**	4.47	**	40	160	**	**	178
C-BE110L5*	LBP	RSCR	5.20	149	**	508	**	1.41	**	4.81	**	**	**	3.5	350	178
C-BE120L5*	LBP	RSIR	5.70	161	**	549	**	1.29	**	4.40	**	**	**	**	**	188
C-BE120L5*	LBP	RSCR	5.70	161	**	549	**	1.40	**	4.78	**	**	**	4.0	350	188
C-BE140L5*	LBP	RSCR	6.08	178	**	607	**	1.58	**	5.39	**	**	**	4.0	350	188
C-BE150L5*	LBP	RSCR	6.65	193	**	659	**	1.58	**	5.39	**	**	**	4.0	350	197
C-BE175L5*	LBP	CSR	7.24	218	**	744	**	1.52	**	5.19	**	100	160	3.5	400	197
C-BE200L5*	LBP	CSR	8.37	252	**	860	**	1.52	**	5.19	**	100	160	3.5	400	197
200-220V/50Hz., 220V/60Hz.																
C-BE50L6*	LBP	RSIR	2.55	52	64	177	218	1.07	1.10	3.65	3.75	**	**	**	**	178
C-BE50L6*	LBP	RSCR	2.55	52	64	177	218	1.16	1.19	3.96	4.06	**	**	3.5	350	178
C-BE75L6*	LBP	RSIR	3.64	82	101	280	345	1.22	1.28	4.16	4.37	**	**	**	**	178
C-BE90L6*	LBP	RSIR	4.16	103	125	352	427	1.30	1.35	4.44	4.61	**	**	**	**	178
C-BE90L6*	LBP	RSCR	4.16	103	125	352	427	1.39	1.45	4.74	4.95	**	**	3.5	350	178
C-BE100L6*	LBP	RSCR	4.50	112	99	382	338	1.39	1.45	4.74	4.95	**	**	3.5	350	178
C-BE110L6*	LBP	RSIR	5.20	149	178	508	607	1.31	1.35	4.47	4.61	**	**	**	**	178
C-BE110L6*	LBP	RSCR	5.20	149	178	508	607	1.41	1.52	4.81	5.19	**	**	3.5	350	178
C-BE140L6*	LBP	RSCR	6.08	178	212	607	723	1.58	1.63	5.39	5.56	**	**	4.0	350	188
C-BE150L6*	LBP	RSCR	6.65	193	233	659	795	1.58	1.63	5.39	5.56	**	**	4.0	350	197
C-BE175L6*	LBP	RSCR	7.24	218	258	744	880	1.52	1.57	5.19	5.36	**	**	3.5	400	197
110V/50Hz., 127V/60Hz.																
C-BE200L7*	LBP	CSIR	8.37	252	303	860	1034	1.45	1.50	4.95	5.12	100	125	**	**	197

Motor type & Wiring Diagram



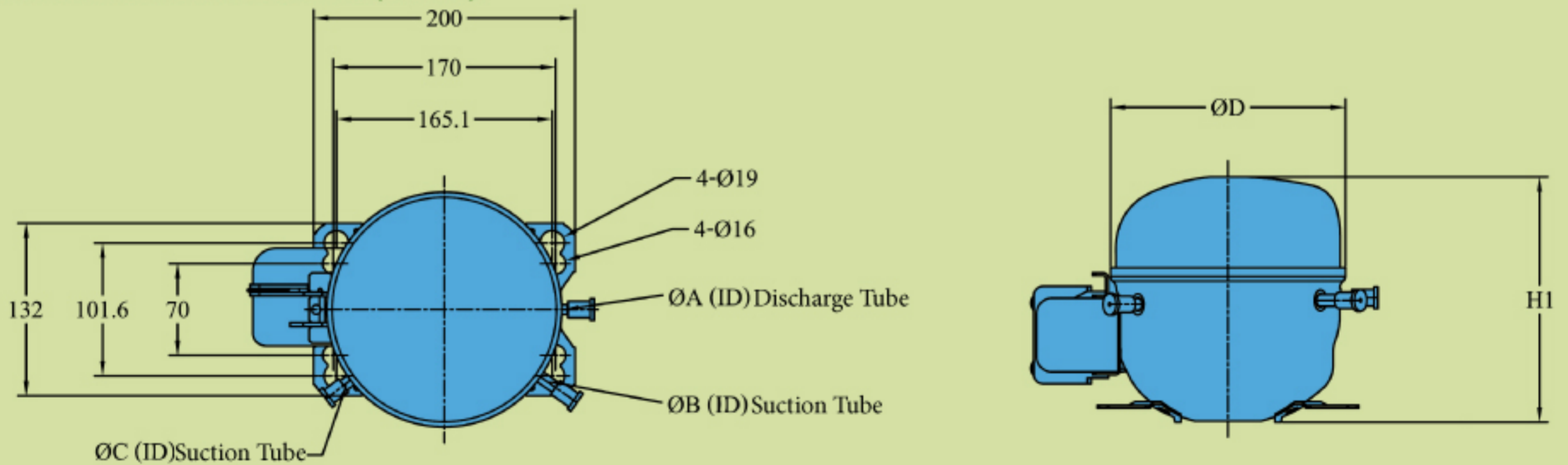
C-B Type

Models	App.	Motor Type	Disp. (CC)	Cooling (w)		Cooling (Btu)		COP (w/w)		EER (Btu/w)		Start Cap		Run Cap		Dim. "H1"
				50Hz	60Hz	50Hz	60Hz	50Hz	60Hz	50Hz	60Hz	mF	vac	mF	vac	
C-BF Series (Super High Performance)															R134a	
100V/50Hz., 60Hz.																
C-BF120L0*	LBP	RSCR	5.70	161	194	549	662	1.39	1.45	4.74	4.95	**	**	20	180	197
C-BF140L0*	LBP	RSCR	6.08	218	258	744	880	1.45	1.50	4.95	5.12	**	**	20	200	197
C-BF200L0*	LBP	RSCR	8.37	252	303	860	1034	1.45	1.50	4.95	5.12	**	**	25	180	197
110V/60Hz.																
C-BF120L1*	LBP	RSCR	5.70	**	194	**	662	**	1.45	**	4.95	**	**	20	180	197
C-BF140L1*	LBP	RSCR	6.08	**	258	**	880	**	1.50	**	5.12	**	**	20	200	197
C-BF200L1*	LBP	RSCR	8.37	**	303	**	1034	**	1.50	**	5.12	**	**	25	180	197
100V/50Hz., 115-127V/60Hz.																
C-BF90L2*	LBP	RSCR	4.16	104	125	355	427	1.50	1.58	5.12	5.39	**	**	8	180	178
C-BF110L2*	LBP	RSCR	5.20	149	178	508	607	1.58	1.63	5.39	5.56	**	**	10	180	178
C-BF120L2*	LBP	RSCR	5.70	161	194	549	662	1.56	1.61	5.32	5.49	**	**	14	180	197
C-BF140L2*	LBP	RSCR	6.08	178	212	607	723	1.68	1.73	5.73	5.90	**	**	14	220	197
C-BF150L2*	LBP	RSCR	6.65	193	233	659	795	1.67	1.71	5.70	5.84	**	**	14	180	197
C-BF175L2*	LBP	RSCR	7.24	218	258	744	880	1.65	1.72	5.63	5.87	**	**	15	180	197
220-240V/50Hz.																
C-BF75L5*	LBP	RSCR	3.64	83	**	283	**	1.37	**	4.68	**	**	**	3.5	350	178
C-BF110L5*	LBP	RSCR	5.20	149	**	508	**	1.58	**	5.39	**	**	**	3.5	350	178
C-BF120L5*	LBP	RSCR	5.70	161	**	549	**	1.56	**	5.32	**	**	**	4	400	197
C-BF140L5*	LBP	RSCR	6.08	178	**	607	**	1.68	**	5.73	**	**	**	4	350	197
C-BF150L5*	LBP	RSCR	6.65	193	**	659	**	1.67	**	5.70	**	**	**	4	350	197
C-BF175L5*	LBP	RSCR	7.24	218	**	744	**	1.65	**	5.63	**	**	**	4	350	197
C-BF200L5*	LBP	CSIR	8.37	252	**	860	**	1.58	**	5.39	**	25	300	**	**	197
C-BF200L5*	LBP	RSCR	8.37	252	**	860	**	1.61	**	5.49	**	**	**	5	350	197
200-220V/50Hz., 220V/60Hz.																
C-BF50L6*	LBP	RSCR	2.55	53	65	181	222	1.20	1.25	4.10	4.27	**	**	3	350	178
C-BF75L6*	LBP	RSIR	3.64	83	102	283	348	1.27	1.32	4.33	4.50	**	**	**	**	178
C-BF75L6*	LBP	RSCR	3.64	83	102	283	348	1.37	1.43	4.68	4.88	**	**	3	350	178
C-BF90L6*	LBP	RSCR	4.16	104	125	355	427	1.50	1.58	5.12	5.39	**	**	3	350	178
C-BF110L6*	LBP	CSIR	5.20	149	178	508	607	1.51	1.58	5.15	5.39	40	160	**	**	178
C-BF110L6*	LBP	RSCR	5.20	149	178	508	607	1.58	1.63	5.39	5.56	**	**	3.5	350	178
C-BF120L6*	LBP	RSCR	5.70	161	194	549	662	1.56	1.61	5.32	5.49	**	**	4.0	350	197
C-BF140L6*	LBP	RSCR	6.08	178	212	607	723	1.68	1.73	5.73	5.90	**	**	4.0	350	197
C-BF150L6*	LBP	CSIR	6.65	193	233	659	795	1.53	1.58	5.22	5.39	40	160	**	**	197
C-BF150L6*	LBP	RSCR	6.65	193	233	659	795	1.67	1.71	5.70	5.84	**	**	3.5	400	197
C-BF175L6*	LBP	RSCR	7.24	218	258	744	880	1.65	1.72	5.63	5.87	**	**	3.5	350	197
110V/50Hz., 127V/60Hz.																
C-BF75L7*	LBP	CSIR	3.64	83	102	283	348	1.27	1.32	4.33	4.50	40	160	**	**	178
C-BN Series (Commercial Application)															R134a	
100V/50Hz., 60Hz.																
C-BN110M0*	MBP	CSIR	4.16	**	238	**	812	**	1.55	**	5.29	75	125	**	**	175
C-BN120M0*	MBP	CSIR	4.5	**	258	**	880	**	1.59	**	5.43	75	125	**	**	175
C-BN140M0*	MBP	CSIR	5.2	**	310	**	1058	**	1.56	**	5.32	100	125	**	**	175
C-BN140M0*	MBP	RSIR	5.2	**	317	**	1082	**	1.61	**	5.49	**	**	**	**	175
C-BN170M0*	MBP	CSIR	6.08	**	371	**	1266	**	1.51	**	5.15	75	125	**	**	188
C-BN180M0*	MBP	CSIR	6.79	**	414	**	1413	**	1.62	**	5.53	100	125	**	**	188
C-BN180M0*	MBP	RSCR	6.79	**	420	**	1433	**	1.71	**	5.84	**	**	16	200	188
C-BN250M0*	MBP	CSR	8.14	**	520	**	1775	**	1.73	**	5.90	125	125	16	220	195
110V/60Hz.																
C-BN110M1*	MBP	CSIR	4.16	**	238	**	812	**	1.55	**	5.29	75	125	**	**	175
C-BN120M1*	MBP	CSIR	4.5	**	258	**	880	**	1.59	**	5.43	75	125	**	**	175
C-BN140M1*	MBP	CSIR	5.2	**	310	**	1058	**	1.56	**	5.32	100	125	**	**	175
C-BN140M1*	MBP	RSIR	5.2	**	317	**	1082	**	1.61	**	5.49	**	**	**	**	175
C-BN170M1*	MBP	CSIR	6.08	**	371	**	1266	**	1.51	**	5.15	75	125	**	**	188
C-BN180M1*	MBP	CSIR	6.79	**	414	**	1413	**	1.62	**	5.53	100	125	**	**	188
C-BN180M1*	MBP	RSCR	6.79	**	420	**	1433	**	1.71	**	5.84	**	**	16	200	188
C-BN250M1*	MBP	CSR	8.14	**	520	**	1775	**	1.73	**	5.90	125	125	16	220	195
100V/50Hz., 115-127V/60Hz.																
C-BN110M2*	MBP	CSIR	4.16	**	240	**	819	**	1.53	**	5.22	75	125	**	**	175
C-BN250M2*	MBP	CSIR	8.14	**	525	**	1792	**	1.57	**	5.36	100	125	**	**	195
200V/50,60Hz.																
C-BN110M3*	MBP	RSIR	4.16	**	232	**	792	**	1.46	**	4.98	**	**	**	**	175
C-BN180M3*	MBP	RSIR	6.79	**	417	**	1423	**	1.62	**	5.53	**	**	**	**	188
C-BN250M3*	MBP	CSR	8.14	**	520	**	1775	**	1.75	**	5.97	40	300	5	400	195
220-240V/50Hz.																
C-BN110M5*	MBP	CSIR	4.16	202	**	689	**	1.56	**	5.32	**	20	300	**	**	175
C-BN180M5*	MBP	CSIR	6.79	360	**	1229	**	1.67	**	5.70	**	40	300	**	**	188

C-B Type

Models	App.	Motor Type	Disp. (CC)	Cooling (w)		Cooling (Btu)		COP (w/w)		EER (Btu/w)		Start Cap		Run Cap		Dim. "H1"
				50Hz	60Hz	50Hz	60Hz	50Hz	60Hz	50Hz	60Hz	mF	vac	mF	vac	
C-BH Series (High Performance)																
100V/50Hz., 60Hz.																
C-BH90L0*	LBP	RSCR	6.08	94	113	321	386	1.51	1.55	5.15	5.29	**	**	10	180	178
C-BH100L0*	LBP	RSCR	7.24	115	135	392	461	1.62	1.65	5.53	5.63	**	**	12	180	188
C-BH110L0*	LBP	RSCR	7.87	130	154	444	526	1.57	1.58	5.36	5.39	**	**	16	180	188
C-BH130L0*	LBP	RSCR	9.03	158	180	539	614	1.67	1.65	5.70	5.63	**	**	20	180	200
C-BH140L0*	LBP	RSCR	9.82	171	195	584	665	1.58	1.60	5.39	5.46	**	**	20	180	200
110V/60Hz.																
C-BH90L1*	LBP	RSCR	6.08	**	113	**	386	**	1.55	**	5.29	**	**	10	180	178
C-BH100L1*	LBP	RSCR	7.24	**	135	**	461	**	1.65	**	5.63	**	**	12	180	188
C-BH110L1*	LBP	RSCR	7.87	**	154	**	526	**	1.58	**	5.39	**	**	16	180	188
C-BH130L1*	LBP	RSCR	9.03	**	180	**	614	**	1.65	**	5.63	**	**	20	180	200
C-BH140L1*	LBP	RSCR	9.82	**	195	**	665	**	1.60	**	5.46	**	**	20	180	200
100V/50Hz., 115-127V/60Hz.																
C-BH50L2*	LBP	RSIR	3.64	**	43	**	147	**	1.02	**	3.48	**	**	**	**	178
C-BH60L2*	LBP	RSCR	4.50	**	77	**	263	**	1.39	**	4.74	**	**	8	180	178
220-240V/50Hz.																
C-BH90L5*	LBP	RSIR	6.08	94	**	321	**	1.25	**	4.27	**	**	**	**	**	178
C-BH90L5*	LBP	RSCR	6.08	94	**	321	**	1.51	**	5.15	**	**	**	2.5	350	178
C-BH100L5*	LBP	RSIR	7.24	115	**	392	**	1.42	**	4.85	**	**	**	**	**	188
C-BH110L5*	LBP	RSIR	7.87	130	**	444	**	1.43	**	4.88	**	**	**	**	**	188
C-BH130L5*	LBP	RSIR	9.03	158	**	539	**	1.53	**	5.22	**	**	**	**	**	200
C-BH140L5*	LBP	RSIR	9.82	171	**	584	**	1.44	**	4.91	**	**	**	**	**	200
127V/60Hz.																
C-BH50L7*	LBP	RSIR	3.64	**	43	**	147	**	1.02	**	3.48	**	**	**	**	178
C-BH60L7*	LBP	RSCR	4.50	**	77	**	263	**	1.39	**	4.74	**	**	8	180	178

General Dimensions (mm.)



Comp. Series	Output (W)	Dimensions (mm.)					Weight with oil (Kg)
		H1	Ø D	Ø A (ID)	Ø B (ID)	Ø C (ID)	
C-BN C-BZN	50-110	175	174	4.9 or 6.5	6.5 or 8.1	6.5	6.5 - 8.0
	120-160	188	177				8.0 - 8.5
	175-200	195	177				8.5 - 9.0
C-BE	50-110	178	177				7.5 - 8.0
	120-150	188	177				8.5 - 9.0
	175-200	197	180				9.0 - 9.5
C-BF	75-110	178	177				7.5 - 8.5
	120-150	197	180				9.5 - 10.0
	175-200	197	180				10.0 - 10.5
C-BH	50, 60	178	177				~ 8.0
	90	178	177	~ 8.5			
	110	188	177	~ 9.0			
	130, 140	200	180	~ 10.5			
C-BR	225, 250	195	177	6.5	6.5	6.5	~ 10.3
	300, 350						~ 10.8
	400, 425						~ 10.8

C-B Type

Models	App.	Motor Type	Disp. (CC)	Cooling (w)		Cooling (Btu)		COP (w/w)		EER (Btu/w)		Start Cap		Run Cap		Dim. "H1"
				50Hz	60Hz	50Hz	60Hz	50Hz	60Hz	50Hz	60Hz	mF	vac	mF	vac	

C-BR Series (Standard Performance)

R404A

220-240V/50Hz.

C-BR225L5*	LBP	CSR	5.20	260	**	887	**	1.20	**	4.10	**	30	300	4	400	195
C-BR250L5*	LBP	CSR	5.70	300	**	1024	**	1.25	**	4.27	**	30	300	4	400	195
C-BR300L5*	LBP	CSR	6.08	330	**	1126	**	1.33	**	4.54	**	40	300	5	400	195
C-BR350L5*	LBP	CSR	6.79	380	**	1297	**	1.33	**	4.54	**	40	300	5	400	195
C-BR400L5*	LBP	CSR	7.24	405	**	1382	**	1.37	**	4.68	**	40	300	6	400	195
C-BR425L5*	LBP	CSR	8.37	475	**	1621	**	1.44	**	4.91	**	40	300	6	400	195

200-220V/50Hz., 220V/60Hz.

C-BR225L5*	LBP	CSR	5.20	260	290	887	990	1.20	**	4.10	**	30	300	4	400	195
C-BR250L5*	LBP	CSR	5.70	300	340	1024	1160	1.25	**	4.27	**	30	300	4	400	195
C-BR300L5*	LBP	CSR	6.08	330	390	1126	1331	1.33	**	4.54	**	40	300	5	400	195
C-BR350L5*	LBP	CSR	6.79	380	445	1297	1519	1.33	**	4.54	**	40	300	5	400	195
C-BR400L5*	LBP	CSR	7.24	405	465	1382	1587	1.37	**	4.68	**	40	300	6	400	195
C-BR425L5*	LBP	CSR	8.37	475	550	1621	1877	1.44	**	4.91	**	40	300	6	400	195

Serial Plate Label

Compressor code

Voltage, Frequency, Phase

Manufactured Date

(Day 2 letters, Month 2 letters, Year 1 letter)

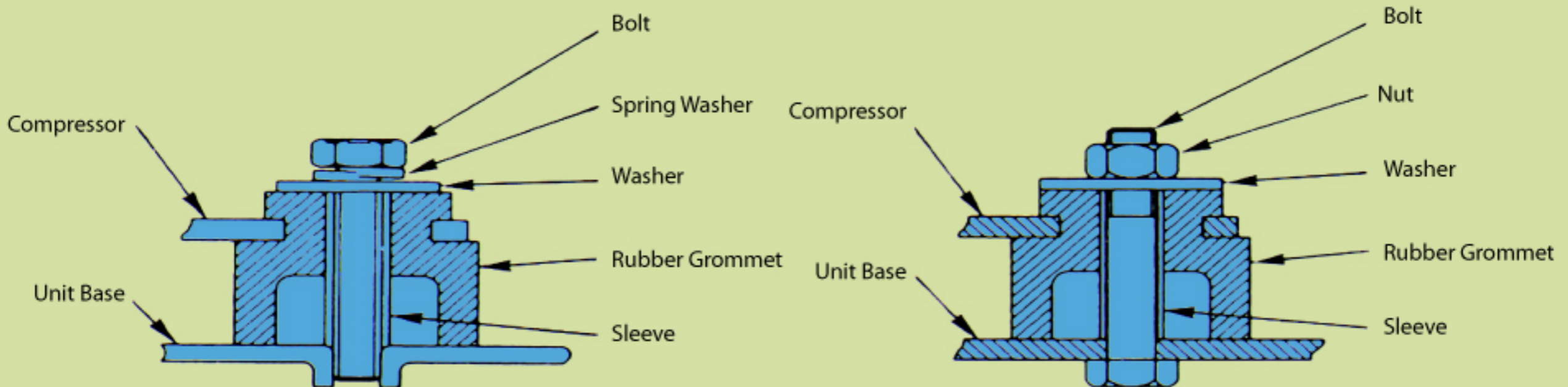


Part No. & Running No.
Compressor model.

Refrigerant.

C-B Type

Mounting Assembly



Allowed Positions For Shipping After Compressor Assembly (All Type)

Good

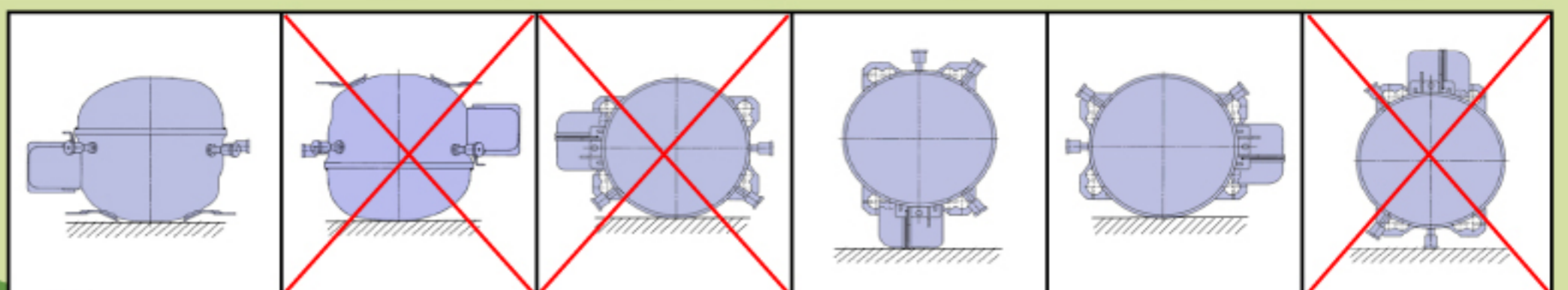
Wrong (No Good)

Wrong (No Good)

No Suggest but if nessary may be can.

No Suggest but if nessary may be can.

Wrong (No Good)



KULTHORN GROUP OF COMPANIES

World - Class Products for Refrigeration and Air - Conditioning

KK Kulthorn Kirby Public Co., Ltd.

Company Registration No : 0107537002150
 Address : 44/1 and 61/1 Moo 7 Chalongkrung Road, Khwaeng Lamplathio, Khet Latkrabang, Bangkok 10520 Thailand
 Product : Hermetic Motor Compressor for Refrigeration and Air -Conditioning Products
 Telephone : (662) 3260831, 7394893
 Fax : (662) 3260837, 7394892
 E-mail : kkpc@loxinfo.co.th, kkc@kulthorn.com
 E-mail (Sales Office) : sales@kulthorn.com
 Website : www.kulthorn.com



THACOM

Thai Compressor Manufacturing Co., Ltd.

Company Registration No. : 0105531076303
 Address : 33/3 Moo 21 Suwintawong Road, Saladang, Bangnumpriao, Chachoengsao 2400
 Product : Rotary compressors for air-conditioner
 Telephone : (038) 593063-67
 Fax : (038) 593062
 E-mail : thacom@thacom.com



KU Kulthorn Electric Co., Ltd.

Address : 44/2 Moo7, Latkrabang Industrial Estate, Chalongkrung RD. Bangkok 10520
 Product : Fractional Horsepower Motors (PSC and Shaded poles) for Air-Conditioners and Refrigeration Units
 Telephone : (662) 3260527-8, 3261204-5, 7394767-8
 Fax : (662) 3260128
 E-mail : ku@kulthorn-electric.com



KSC Kulthorn Steel Co., Ltd.

Company Registration No. : 0105550063921
 Address : 61/1 Moo 4 Chalongkrung Road , Khwaeng Lamplatew Khet Ladkrabang Bangkok 10520 Thailand
 Products : Slitting, Blanking of Steel Products
 Telephone : (662) 7396000
 Fax : (662) 3260766
 E-mail : thanawat@kulthorn.com , naree_ksc@kulthorn.com



Kulthorn Kirby Foundry Co., Ltd.

Company Registration No. : 0105532113601
 Address : 1 Moo 22 Suwintawong Road, Saladang,
 Bangnumpeaw, Chachoengsao 24000
 Product : Quality Iron Casting
 Telephone : (038) 593016-9
 Fax : (038) 593015
 E-mail : kkf122@chloxinfo.com



Thai Sintered Products Co., Ltd.

Company Registration No. : 0105533016162
 Address : 1 Moo 22 Suwintawong Road, Saladang,
 Bangnumpeaw, Chachoengsao 24000
 Product : Powdered Metal Parts for Compressor and Automotive
 Telephone : (038) 593023-7
 Fax : (038) 593022
 E-mail : preecha@thaisinter.co.th



Kulthorn Metal Products Co., Ltd

Company Registration No. : 0105548043322
 Address : 61/2 Moo 4 Chalongkrung Road , Khwaeng Lamplatew
 Khet Ladkrabang Bangkok 10520 Thailand
 Products : Metal Forging , Precision Machining , Heat Treatment (Carburizi
 Telephone : (662) 7396638 – 9 , 3260314 – 7
 Fax : (662) 7396643 , 3260318
 E-mail : kmp@kmp05.com



Kulthorn Materials & Controls Co., Ltd.

Address : 1/2 Moo 22 Suvintawong Road, Saladang
 Bangnumpeaw, Chachoengsao 24000
 Product : High Quality Magnet Wires, Gas Pressure Thermostat
 Telephone : (038) 593030-3
 Fax : (038) 593028
 E-mail : chamnan@kmc.in.th



Suzhou Kulthorn Magnet Wire Co., Ltd

Address : 18 Long Pu Rd, SIP, Jiangsu Province,
 215126 China
 Products : High Quality Magnet Wires
 Telephone : +86 (512) 6283 3750 / +86(512)62650058
 Fax : +86 (512) 6283 3763
 E-mail : sales@pdmagnetwire.com.cn





Kulthorn Premier
Company Limited

Office 44/1 Moo 7 Chalong Krung Road, Lam Pla Thio, Lat Krabang, Bangkok 10520 Thailand
Tel: (662) 326 0831-6, 326 0529-32, 739 4893-5 Fax: (662) 326 0837, 739 4892
E-mail: kkpc@loxinfo.co.th, kkc@kulthorn.com Website: www.kulthorn.com
E-mail (Sales office): sales@kulthorn.com

Plant 446/3 Moo 9 Chachoengsao-Nakornratchasima Road, Kabinburi, Prachinburi 25100, Thailand
Tel: (037) 204835, 455516 Fax: (037) 455525, 204844
E-mail: sales_kpc@kulthorn.com, kamjorn@kulthorn.com

KPC/2009/5K