



HTK80AA

PRODUCT SPECIFICATION

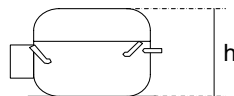
OPERATION:

Application:	L.B.P.	Max. Ambient Temp:	43°C
Refrigerant:	R600a	(1) Max. Steady Discharge Temp:	120°C
Operation:	Capillary	(1,2) Max. Peak Discharge Temp:	135°C
Cooling:	Static	Max. Steady Condensing Temp:	60°C
		(2) Max. Peak Condensing Temp:	70°C
		Max. Winding Temp:	130°C
		Max. Impurities:	30 mg
		Max.Total Compressor Water Content:	100 mg

COMPRESSOR:

Displacement:	8.11 cc	Oil Type:	Mineral
Bore:	25.40 mm	(4) Viscosity:	10 cSt
Stroke:	16.01 mm	Suction Muffler:	Semi-direct

(3) Net Wt:	8.3 kg
Case Size:	h = 157.5 mm
Oil Charge:	180 cc



ELECTRICAL:

Power Supply:	220 - 240V	Motor Type:	RSCR
Voltage Limits:	187 - 264V	Locked Rotor Current:	6.6 / 3.3 A**
Frequency:	50 Hz		
Phase:	1 ph		

Main Winding Resistance at 25°C:	28.2 Ω
Start Winding Resistance at 25°C:	32.4 Ω

** Maximum current / Measured after 4 seconds

- (1) Measured 5cm. from the shell with insulated thermocouples
- (2) For transient conditions during 'Pull Down'
- (3) Net weight is with oil but without electrics
- (4) Measured at 40°C

For rated performance,

the suction line must be connected to the stub marked 'AS' on the attached drawing.

A run capacitor must be used with RSCR and CSR compressors.



HTK80AA

PRODUCT SPECIFICATION

ELECTRICAL COMPONENTS:

ECC Starting Device: K 100-xx
(1) ZEM Starting Device: PTC- 7100D3 / 8100
ZEM PTC Resistance: 14 Ω
'Combo' PTC Resistance: 14 Ω
Run Capacitor: 2.5 μF

-xx Protector short code

PROTECTORS:

PROTECTORS	BDG ¾	Combo	Electrica ¾	Texas ¾	Texas 4TM
Type	AE 25 FU x	C2-174 NFBYY xx	T 0602 / kk	MSP 334HZ xxxx	4TM 174 NFBYY xx
Open °C	115 - 125 °C	115 - 125 °C	115 - 125 °C	115 - 125 °C	115 - 125 °C
Close °C	71 - 53 °C	70 - 52 °C	70 - 55 °C	70 - 52 °C	70 - 52 °C
U.T.C	1.15 A 70 °C	1.23 A 70 °C	1.32 A 70 °C	1.35 A 70 °C	1.23 A 70 °C
Time Check Current	4.30 A	4.8 A (5-15s)	4.50 A	4.40 A	4.8 A (5-15s)
Max. Current	10.0 A	10.4 A (2s max.)	10.0 A	12.0 A	10.4 A (2s max.)
Code (if any)	F2	24	C6	V5	
Alt. protectors:	AF 25 FU x D3				

PTC-71.. / 81.. and Combo are for Terminal Cover version only.

(1) BDG protector AF type is for use with PTC-71.. only, and PTC-71.. is only fitted with BDG protector.

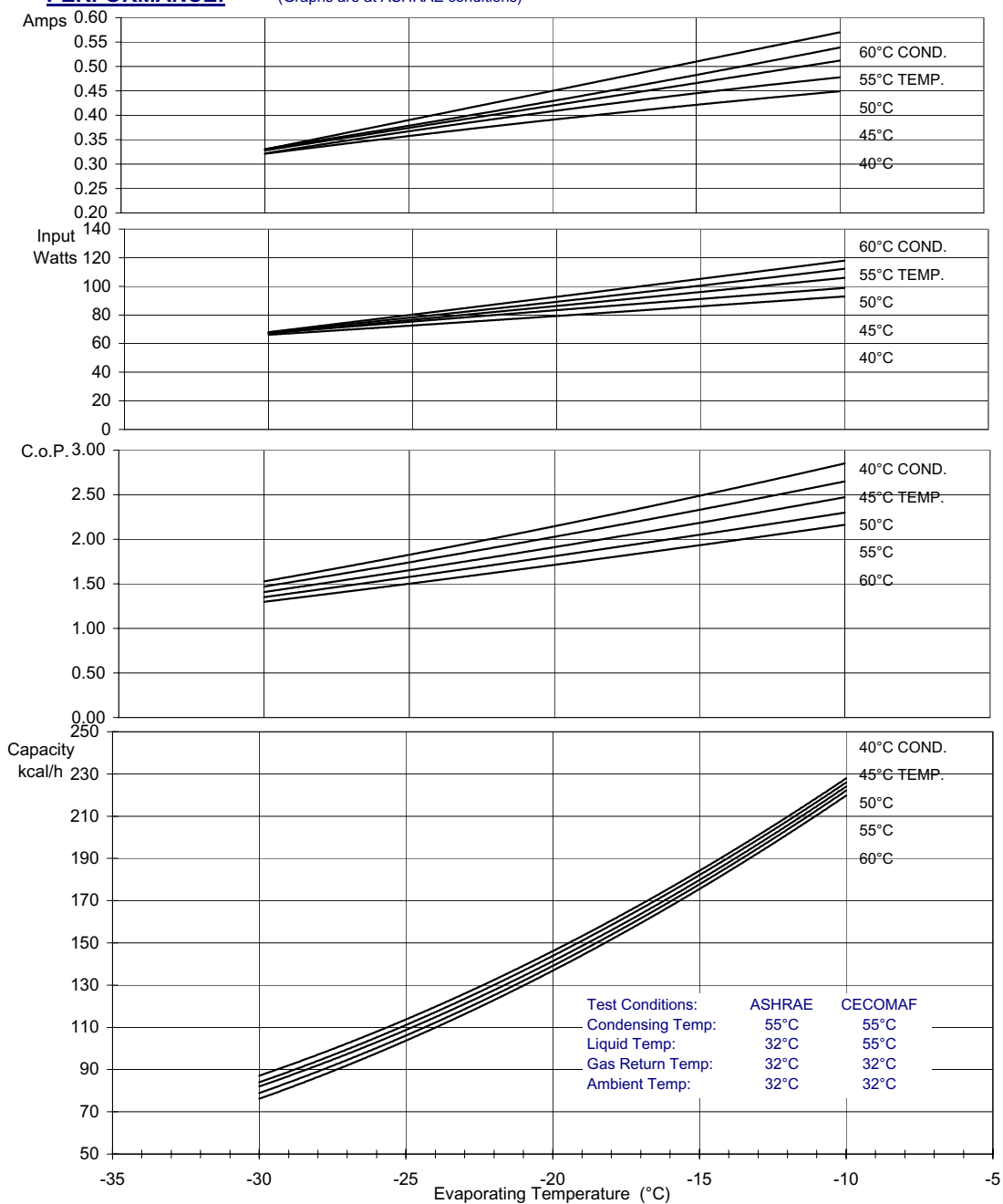


HTK80AA

PRODUCT SPECIFICATION

PERFORMANCE: (Graphs are at ASHRAE conditions)

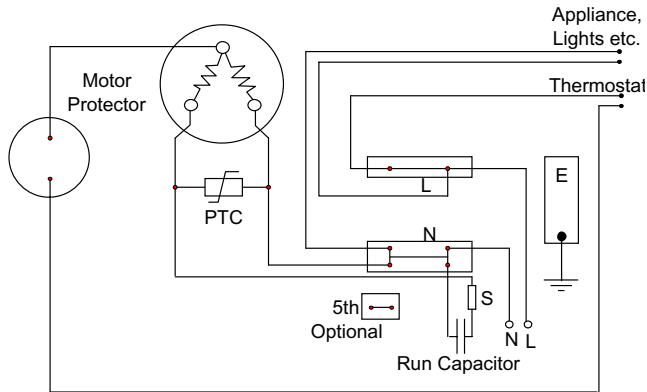
220V 50Hz



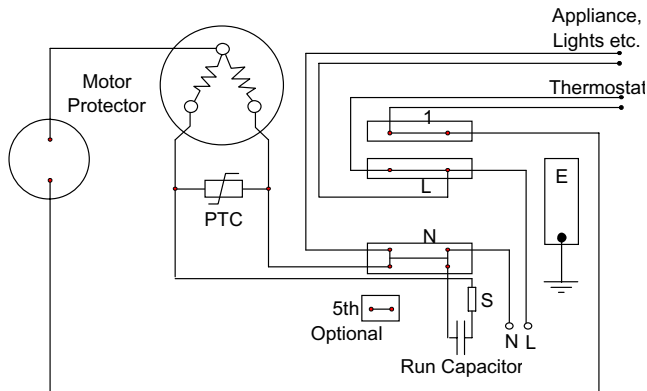
Test Conditions:	ASHRAE	CECOMAF
Condensing Temp:	55°C	55°C
Liquid Temp:	32°C	55°C
Gas Return Temp:	32°C	32°C
Ambient Temp:	32°C	32°C

	Evaporating Temperature °C	-30	-25	-23.3	-20	-15	-10	
ASHRAE:	Capacity	Kcal/h	79	106	117	139	178	222
	C.o.P.	W / W	1.35	1.58	1.66	1.81	2.05	2.30
CECOMAF:	Capacity	W	76	101		133	170	212
	C.o.P.	W / W	1.12	1.31		1.50	1.69	1.90
	Input Power	W	68	78	82	89	101	112
	Current	A	0.33	0.38	0.40	0.43	0.48	0.54

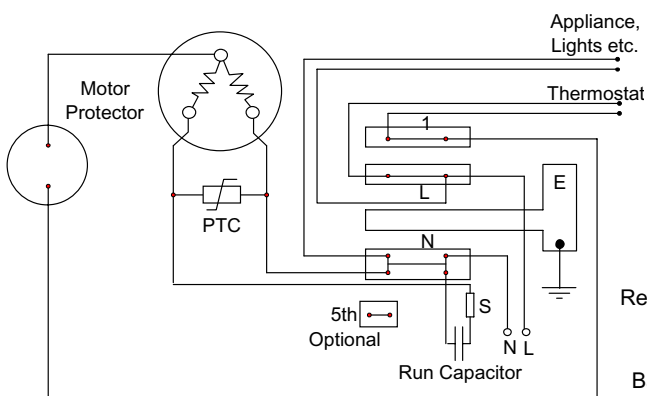
Circuit Diagram for ECC Terminal Board Standard Version



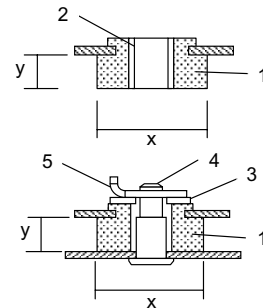
Circuit Diagram for ECC Terminal Board Frontal Version



Circuit Diagram for ECC Terminal Board Rast 5 Version



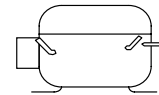
Mounting Accessories



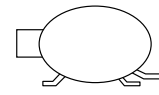
x = 26mm or 28.5mm
y = 9mm or 10.3mm
Other sizes available

1. Rubber grommet
2. Sleeve
3. Washer
4. Steel pin
5. Clip

Recommended Transport Positions when fitted into appliances



Upright



Tubes Down

Compressor Label

