

Mbsm.pro, Compressor, Refrigeration  
Compressor, 270W, GFF93AA, 1/3 HP++,  
FFI12HBK, TPH1410Y, F Series  
200-220V/50Hz, SEBERIA Hermetic  
Compressor, lbp, hbp

Category: Archivation,compressor  
written by Lilianne | 11 April 2022



Private Picture Copyright : [WWW.MBSM.PRO](http://WWW.MBSM.PRO)

Model	Power Hp	Displacement	Cooling Capacity	Motor Type	Input Power	Rated Current	COP
GFM44AA	1/6	4.6	120	RSIR	100	0.70	1.20
GFM53AA	1/6+	5.3	145	RSIR	114	0.88	1.27
GFM57AA	1/5	5.7	165	RSIR	132	0.97	1.25

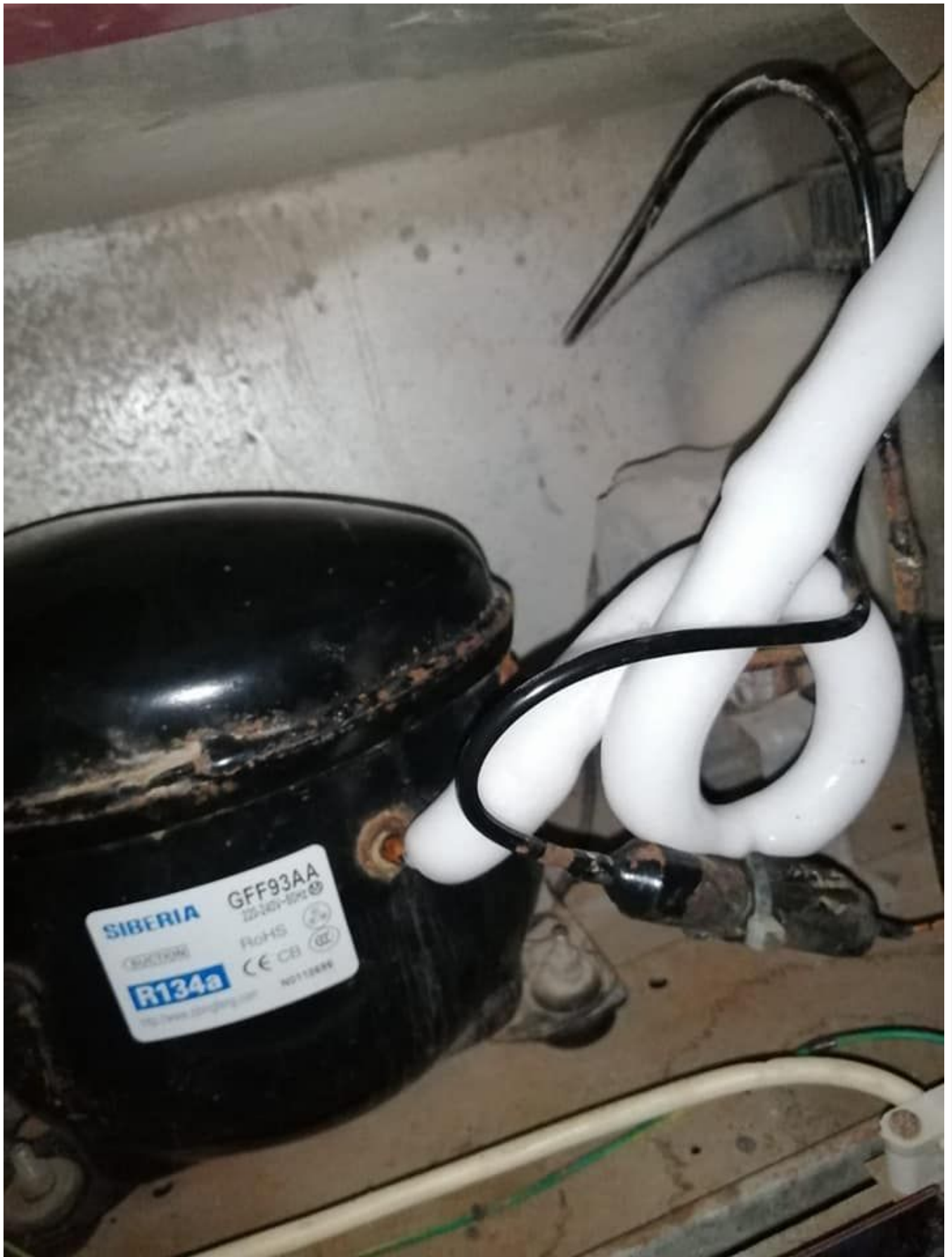
GFM75AA	1/4+	7.5	215	RSIR	159	1.20	1.35
GFM10AA	1/3+	10.0	295	RSIR	220	1.55	1.34
GFM12AA	1/2-	12.0	330	RSIR	235	1.85	1.40
GFM12AA_S	1/2-	12.0	330	RSIR	235	1.85	1.40

## Product details of Refrigeration Compressor GFF44AA/57/66/86/93 (1/8HP-1/3HP)

- . Refrigerator compressor
- .GAS use R134A
- . Brand new and high quality
- . Durable
- .GFF44AA (1/8HP)
- .GFF57AA(1/6HP)
- .GFF66AA(1/5HP)
- .GFF86AA(1/4HP) – compressor for Chest Freezer(LY450LD) or 2 door counter Chiller
- .GFF93AA(1/3HP) – compressor for Chest Freezer(LY600LD) or 3 door counter Chiller

## Specifications of Refrigeration Compressor GFF44AA/57/66/86/93 (1/8HP-1/3HP)

Mbsm\_dot\_pro\_private\_PDF\_mbsm\_pro\_46025\_html Mbsm\_dot\_pro\_private\_PDF\_gff93aa-1



**OTHER INFORMATION**

**COMPARISON CHART**

MOTECH	POWER	EMBRACO	TECUMSEH
GFF93AA	1/3+ HP	FFI 12 HBK	TPH1410Y
GFF86AA	1/3 HP	EGAS 100 HLR	TPH1410Y
		EGAS 90 HLR	-
GFF75AA	1/4+ HP	EGAS 80 HLR	TSB1390Y
GFF66AA	1/4 HP	EGAS 80 HLR	TSB1380Y
		-	TSB1374Y
GFF57AA	1/5 HP	EGAS 70 HLR	TSB1355Y
		EMI 70 HER	THG1358Y
		EMIS 70 HLR	TSB1360Y
GFF44AA	1/6 HP	EMI 60 HER	THG1346Y
			THG1352Y
GVM35AA	1/8 HP	EMI 80 HLR	THG1335Y
GVM30AA	1/10 HP	EM 30 HNR	THG1330Y

Private Picture Copyright : WWW.MBSM.PRO

Wanbao Model ( R134a )	Siberia Model	Displmnt(cc)	Cooling Capacity	C O P	Horse Power	Motor type
AS43 – 84W, 0.94COP	GVF35AA	3.5	90 W	1.05	1/8 HP	RSIR
	GFM44AA	4.4	125 W	1.2	1/6 HP	RSIR
ASD53K – 144W, 1.04COP	GFM53AA	5.3	145 W	1.25	1/6 HP	RSIR
AQAW66X – 153W, 1.20COP	GFF57AA	5.7	165 W	1.36	1/5 HP	RSIR
AQAW77X – 180W, 1.20COP	GFF66AA	6.6	190 W	1.36	1/4 HP	RSIR
AQAW91 – 218W, 1.20COP	GFF75AA	7.5	215 W	1.36	1/4 HP	RSIR
	GFF86AA	8.6	250 W	1.38	1/3+ HP	RSIR
AQAW110 – 260W, 1.20COP	GFF93AA	9.3	270 W	1.38	1/3+ HP	RSIR

GFF44AA	1/6	4.6	130	RSIR/RSCR	99/93	0.65/0.53	1.31/1.40
GFF57AA	1/5	5.7	165	RSIR/RSCR	115/110	0.77/0.57	1.43/1.50
GFF66AA	1/4	6.6	195	RSIR/RSCR	143/129	0.92/0.74	1.36/1.51
GFF75AA	1/4+	7.5	215	RSIR/RSCR	156/147	1.15/0.83	1.38/1.46
GFF86AA	1/3	8.6	250	RSIR/RSCR	179/164	1.24/0.90	1.40/1.52
GFF93AA	1/3+	9.3	270	RSIR/RSCR	185/175	1.25/0.95	1.46/1.54

**F(T)Series High Efficiency Compressor 220-240V/50Hz**

GFT36AA	1/7	3.6	110	RSCR	68	0.32	1.62
GFT44AA	1/6	4.4	130	RSCR	81	0.43	1.60
GFT53AA	1/5-	5.3	145	RSCR	96	0.53	1.50

GFT57AA	1/5	5.7	165/168	RSCR	104/98	0.55/0.49	1.60/1.70
GFT61AA	1/5+	6.1	182	RSCR	107	0.53	1.70
GFT66AA	1/4	6.6	195	RSCR	115/113	0.58/0.55	1.68/1.72
GFT75AA	1/4+	7.5	220	RSCR	129	0.69	1.70
GFT86AA	1/3	8.6	250	RSCR	148	0.73	1.70
GFT93AA	1/3+	9.3	270	RSCR	166	0.84	1.65

**F Series 115V/60Hz**

GFM44AD	1/6+	4.6	145	RSIR	111	1.62	1.30
GFM53AD	1/4	5.3	185	RSIR	131	1.75	1.30
GFM57AD	1/4	5.7	195	RSIR	138	1.85	1.30
GFM61AD	1/4+	6.1	210	RSIR	168/150	2.75/1.90	1.25/1.40
GFR40AD	1/6	3.6	120	RSCR	84.6	7/8	1.42
GFR57AD	1/4	5.7	195	RSCR	116	1.2/7	1.55
GFM93AD	1/4	9.3	305	RSIR	218	3.2	1.40

**F Series 200-220V/50Hz**

GFF53AT	1/6+	5.3	150	RSCR	106	0.67	1.42
GFF57AT	1/5	5.7	165	RSCR	118	0.86	1.40
GFF66AT	1/4	6.6	196	RSCR	138	1.02	1.42
GFF75AT	1/4+	7.5	218	RSCR	147	1.07	1.48
GFF86AT	1/3	8.6	250	RSCR	168	1.14	1.49
GFF93AT	1/3+	9.3	275	RSCR	185	1.23	1.49

**F Series 100V-50/60Hz**

GFF66AJ	1/4	6.6	195/233	RSCR	135/152	2.15/1.95	1.44/1.53
GFF93AJ	1/3	9.3	270/305	RSCR	190/205	2.95/2.58	1.42/1.49

**F Series Compressor M/HBP R134a**

**220-240V 50/60Hz**

GFL60AG_AL	3/4	5.3	550/650	CSIR	245/265	1.88/1.69	2.24/2.45
------------	-----	-----	---------	------	---------	-----------	-----------

**220-240V 50Hz**

GFL80AA	1	7.5	720	CSIR	317	1.96	2.27
GFL10AA	1.2	9.3	880	CSIR	430	2.50	2.0

**F Series Compressor LBP R600a**

**F(M/F) Series 220-240V/50Hz**



BFM86AA	1/6+	8.6	142	RSIR	101	0.82	1.40
BFF86AA	1/6	8.6	142	RSIR/RSCR	93/90	0.65/0.51	1.53/1.58
BFM93AA	1/5	9.3	155	RSIR	108	0.85	1.43
BFF93AA	1/5	9.3	160	RSIR/RSCR	103/98	0.73/0.58	1.55/1.63
BFM10AA	1/5+	10.0	168	RSIR	122	1.01	1.38
BFF11AA	1/4	10.5	185	RSIR	121	0.70	1.45
BFM12AA	1/4+	12.0	202	RSIR	144	1.10	1.40
BFF12AA	1/4+	12.0	202	RSIR/RSCR	130/123	1.04/0.75	1.55/1.64

### F(T) Series High Efficiency Compressor 220-240V/50Hz

BFT57AA	1/7-	5.7	95	RSCR	53/50	0.28/0.24	1.80/1.90
BFT75AA	1/6	7.5	130	RSCR	75/72	0.35	1.73/1.80
BFT86AA	1/5	8.6	142	RSCR	82/74	0.43/0.36	1.73/1.92
BFT93AA	1/5	9.3	155	RSCR	82	0.50	1.90
BFT10AA	1/5+	10.0	175	RSCR	100/92	0.60/0.43	1.72/1.90
BFT11AA	1/4	10.0	180	RSCR	100	0.54	1.80
BFT12AA	1/4-	11.5	200/210	RSCR	116/114	0.54/0.52	1.72/1.86

### F Series 200-220V/50Hz

BFF75AT	1/6	7.5	130	RSCR	80	0.46	1.63
BFF86AT	1/5	8.6	142	RSCR	91.5	0.65	1.55
BFM93AT	1/5	9.3	158	RSIR	112	0.93	1.41
BFF93AT	1/5	9.3	160	RSCR	100	0.66	1.60
BFF11AT	1/4	11	175	RSCR	110	0.76	1.60
BFT12AT	1/4	11.5	200	RSCR	130	1.0	1.50

### F Series 115/60Hz

BFR57AD	1/6	5.7	120	RSCR	75	0.73	1.60
BFR75AD	1/5-	7.5	156	RSCR	92	0.90	1.70
BFM10AD	2/7	10.0	200	RSCR	133	1.55	1.50
BFR10AD	2/7	10.0	195	RSCR	116	1.32	1.65
BFM12AD	1/3	11.0	230	RSCR	153	1.65	1.50

### F Series Compressor LBP R290a

#### 220-240V/50Hz

PFT61AA	3/8	6.1	285	RSCR	183	1.55
PFT66AA	3/8	6.6	310	RSCR	200	1.56
PFT66AA©	3/8	6.6	310	RSCR	190	1.65
PFT75AA	1/2-	7.5	350	RSCR	216	1.62

PFT75AA©	1/2-	7.5	350	RSCR	206	1.70
PFT86AA	1/2	8.6	388	RSCR	258	1.50
PFT86AA©	1/2	8.6	421	RSCR	263	1.60
PFT93AA©	3/5	9.3	455	RSCR	284	1.60

**F Series Compressor L/MBP R290**

**220-240V/50Hz**

PFL57AA	1/3	5.7	255/490	CSIR	170/235	1.50/2.09
PFL75AA	1/2-	7.5	350/657	CSIR	248/324	1.41/2.03

[Mbsm\\_dot\\_pro\\_private\\_PDF\\_mbsm\\_pro\\_46025\\_html-1Télécharger](#)

[Mbsm\\_dot\\_pro\\_private\\_PDF\\_gff93aa-1-1Télécharger](#)