

Mbsm.pro, Compressor, Embraco, Aspera, NJ9226GK, MBP, R404A, R507, 230V/1/50Hz, 1 HP++, 1.5 hp++, 1.75 hp

Category: compressor

written by mahdi miled | 22 December 2022



Private Picture Copyright : WWW.MBSM.PRO

Compressor Embraco Aspera NJ9226GK, MBP – R404A, R507, 230V/1/50Hz, 1+ HP, discharge 21.71 cm³, motor type CSR, lubricant type POE 22, lubricant charge 750 ml, 3298 W at +7.2 / 54.4 °, LRA 27.5 A, expansion device: capillary or valve, cooling: fan cooling, weight 20.7 kg

Refrigerant:

R404A R507a

Power range(W):

1 – 1,5 kW 3 – 5 kW

Performance range (C):

-20 C to +10 C

Working area:

MBP

Design type:

Hermetic

Model series:

NJ

Use with:

Expansion/Capillary

Power range(HP):

0-2

Power supply:

230 V

Oil type:

P0E22

Engine type:

CSR

Article condition:

New

Info:

Oil filled

Shipping weight:

22,70 kg

customs tariff number:

84143081

Cooling capacity condition:

T0 -10 C, Tk +45 C

Manufacturer:

Embraco Aspera

Model:

NJ9226GK

Modelname:

J9226GK

Stroke volume (cm3):

21,71

Performance condition:

+7,2°C tk +54,4 °C

Power (W):

3298

Cooling capacity (W):

1255

Power (HP):

1,1

Max. Starting current (A):

27,5

Engine type:

CSR

Note:

Fan cooling necessary

Oil quantity (l):

0,75

Compressor type:

Piston

Power range:

-20 C to +10 C



Refrigerant R404a Low Back Pressure

NEK2125GK	7/16HP
NEK2134GK	1/2HP
NEK2150GK	1/2HP
NEK2168GK	1/2HP
T2155GK	3/4HP
T2168GK	3/4HP
T2178GK	1HP
NT2192GK	1HP
NJ2192GK	1.5HP
NJ2212GK	1.25HP

Refrigerant R404a Medium/High Back Pressure

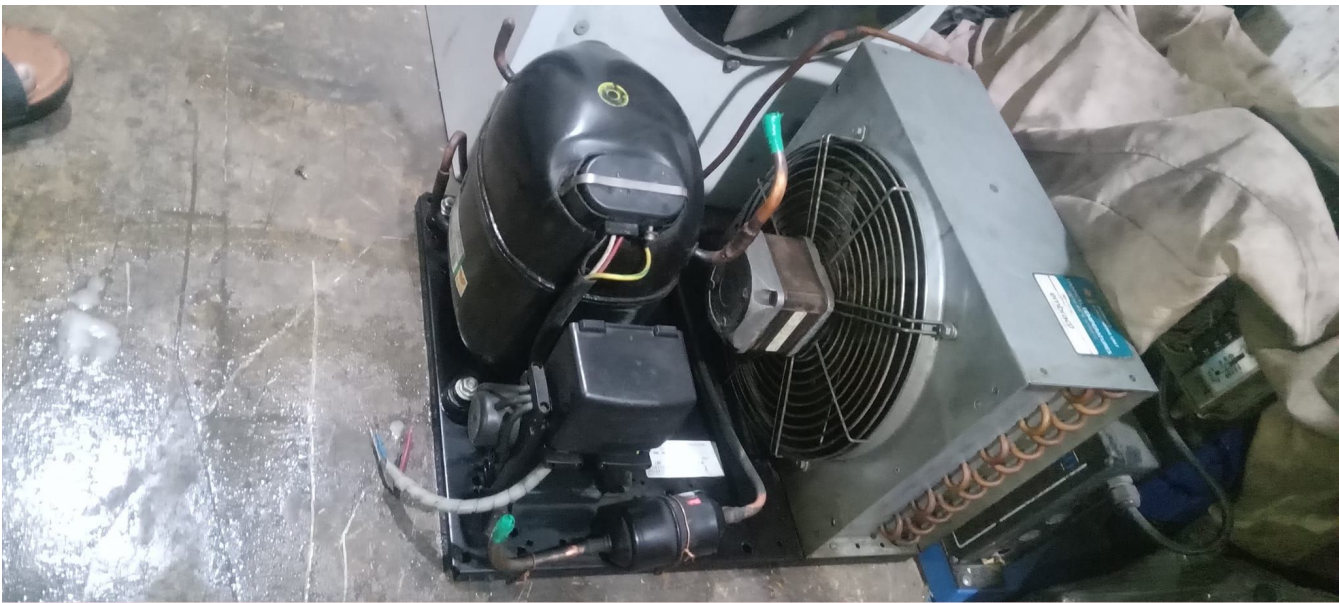
NEK6210GK	1/2HP
NE9213GK	3/4HP
T6220GK	7/8HP
T6222GK	3/4HP
NJ9226GK	1HP
NJ9232GK	1.5HP
NJ9238GK	1.75HP



Private Picture Copyright : WWW.MBSM.PRO







embraco **NJ2192GK**

INT. THERMALLY PROTECTED	220-240 V-50 Hz
R 404A	
PDE OIL 750CC	1 PH

MADE IN SLOVAKIA NO START WITHOUT STARTING DEVICE

944AA11 CE 086584IP


R 404A



Picture Picture Copyright : WWW.MBSM.PRO



Picture Picture Copyright : WWW.MBSM.PRO



