

**Compressor, Copeland,
Ck20k3pfv, 20000 btu, 5040
kcal, 5861 w, 9.6 AC
Compressor, Copeland,
Ck20k3pfv, 1.5 hp**

written by Amina | 23 October 2023



Private Picture Copyright : WWW.MBSM.PRO

Compressor, Copeland, Ck20k3pfv, 20000 btu, 5040 kcal, 5861 w,
9.6 AC Compressor, Copeland, Ck20k3pfv, 1.5 hp

Water, dispenser, compressor, ASV25H, 1/13 hp, r134a, lbp

written by Amina | 23 October 2023



Water, dispenser, compressor, ASV25H, 1/13 hp, r134a, lbp

Refrigeration, Compressor, 1/10 HP, R-134A, Samsung, CD130C-L1Z2

written by Amina | 23 October 2023



Private Picture Copyright : WWW.MBSM.PRO

Refrigeration, Compressor, 1/10 HP, R-134A, Samsung, CD130C-L1Z2

Huayi, HYE60YL63, Compressor, 1/5 hp, r134a, 146 kcal, full copper

written by Amina | 23 October 2023



Private Picture Copyright : WWW.MBSM.PRO

Huayi, HYE60YL63, Compressor, 1/5 hp, r134a, 146 kcal

**Deep Freezer, Crown, CR120w,
120 L, 140 W, 1.1 a, r600a,
40 g, 4.23 feet, Compressor ,
1/6 hp, Lbp, 140 w,**

written by Amina | 23 October 2023



Deep Freezer, Crown, CR120w, 120 L, 140 W, 1.1 a, r600a, 40 g,
4.23 feet, Compressor , 1/6 hp, Lbp, 140 w,

**Mitsubishi, Electric, fixed
frequency, NH41VNHT 2.55HP,
single-phase, 220V, rotary,
air condition, 26000 btu/h**

written by Amina | 23 October 2023



SIAM COMPRESSOR INDUSTRY

MITSUBISHI ELECTRIC CO.

REFRIGERANT COMPRESSOR
MODEL **NH41VNHT**

MANUFACTURING DATE 16092010

POWER SOURCE
220-240V 1~ 50Hz

POWER INPUT 2410 W AT 50 HZ

LRA 70/77 A

REFRIGERANT R-22

OIL 1.30 L

AP 2.74 MPa

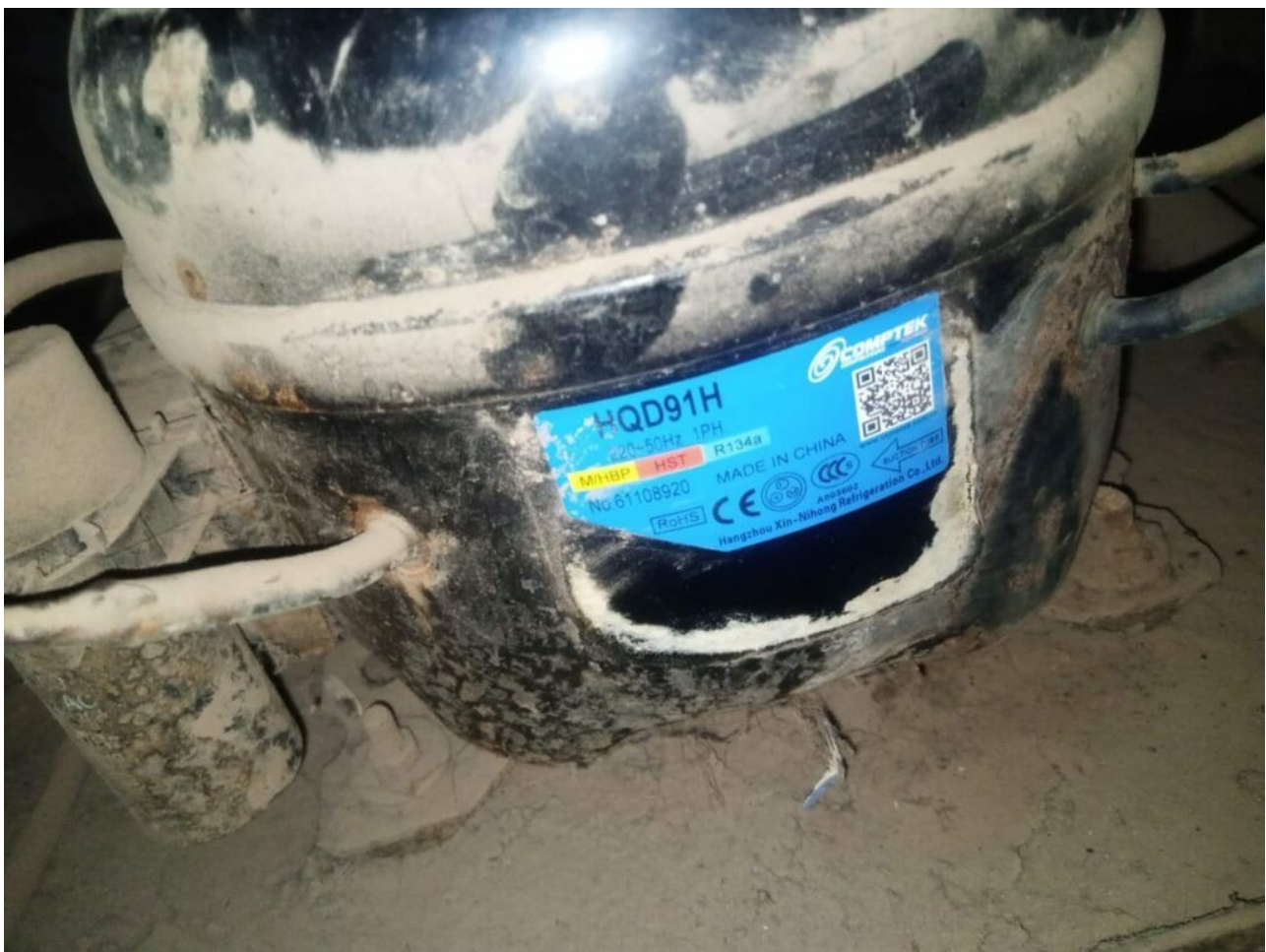
SP 10.5 MPa

THERMALLY PROTECTED

Mitsubishi, Electric, fixed frequency, NH41VNHT 2.55HP, single-phase, 220V, rotary, air condition, 26000 btu/h

COMPTEK, Compressor, HALQD91HHR, HQD91H, 1/4 hp++, 1/3 hp-, m/hbp, 250 w, 8.8 cm³, r134a

written by Amina | 23 October 2023



Private Picture Copyright : WWW.MBSM.PRO

COMPTEK, Compressor, HALQD91HHR, HQD91H, 1/4 hp++, m/hbp, 250 w, 8.8 cm³

Hermetic, compressor, Embraco, Aspera, NEK2134GK-A, CSIR, R404A, R507, 1/2 Hp, 8.7 cm³, NEK2134GK, 1bp, NEK 2134 U

written by Amina | 23 October 2023



Private Picture Copyright : WWW.MBSM.PRO

Hermetic, compressor, Embraco, Aspera, NEK2134GK-A, CSIR, R404A, R507, 1/2 Hp, 8.7 cm³, NEK2134GK, 1bp, NEK 2134 U

**Compressor, Huayi, HY153YZ,
high back pressure, hbp, 1/2
hp++, R134A, 220-240V / 50Hz**

written by Amina | 23 October 2023



Private Picture Copyright : WWW.MBSM.PRO

Refrigeration Compressor

HY153YZ

Vol./Freq.□	220-240V / 50Hz
Cooling Capacity□	1350W
C.O.P□	2.30
Horse Power□	1/2

Refrigerant□	R134A
Application□	HBP
The Evaporating Temperature (W)□	7.2°C

Huayi Series Refrigeration Compressor 240V/50Hz

Refrigeration Compressor for Refrigerator, freezer, drinking fountains and home ice cream.

Huayi Series Refrigeration Compressor 240V/50Hz

Refrigeration Compressor for Refrigerator, freezer, drinking fountains and home ice cream.

Model	Disp.(CC)	Application		Voltage (W)	Capacity
					-23.3
HYE55Y	5.5	LBP	R134a	240V	150W
HYE60Y	6	LBP	R134a	240V	170W
HYE69Y	6.7	LBP	R134a	240V	190W
HYE81Y	8.1	LBP	R134a	240V	235W
HYE90Y	9	LBP	R134a	240V	265W
HYE113Y	11.3	LBP	R134a	240V	330W
HYE131Y	13.1	LBP	R134a	240V	380W
HYE153Y	15.3	LBP	R134a	240V	430W
Model No.			HY153YZ		
Vol./Freq.:			220V-240V/50Hz		
Refrigerant:			R134a refrigeration compressor		
Cooling Capacity:			1300W		

C.O.P:	2.15 W/W
Horse Power:	1/2
Displ.	13.1 cm ³
Application:	High Back Pressure Compressors (HBP)
Evaporating Temperature (W):	LMBP: -23.3□ , HMBP: 7.2□
Net Weight:	15KGS

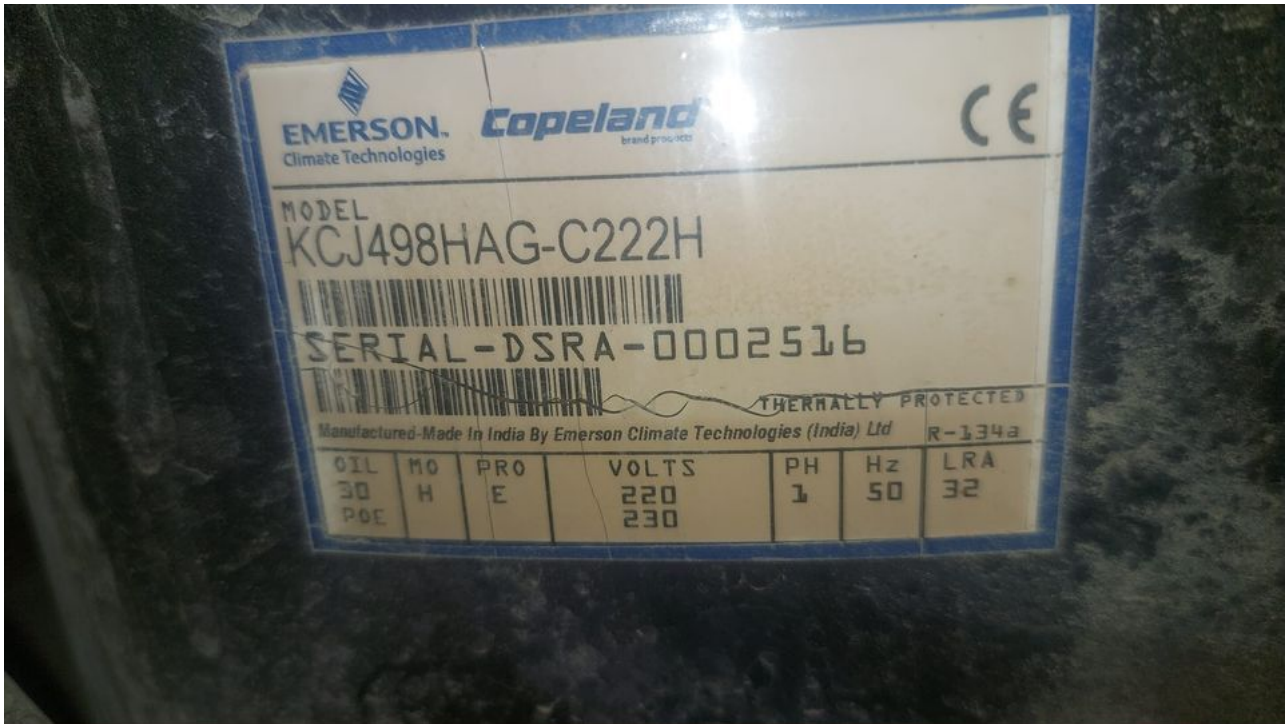




Private Picture Copyright : WWW.MBSM.PRO

COPELAND , KCJ498HAG , COMPRESSOR, R134A , 3/4 HP+ , HBP

written by Amina | 23 October 2023



Private Picture Copyright : WWW.MBSM.PRO

COPELAND, KCJ498HAG, COMPRESSOR, R134A ,3/4 HP+, HBP