

**Compresor, Copeland,
Hermetico, CRK3-0325-PFJ, 3.5
T, HCFC, R22, 50 Hz, 1 PH,
220/240 V, 3.25 hp, 40.600
BTU**

written by Amina | 25 October 2023



Private Picture Copyright : WWW.MBSM.PRO

Compresor, Copeland, Hermetico, CRK3-0325-PFJ, 3.5 T, HCFC, R22, 50 Hz, 1 PH, 220/240 V, 3.25 hp, 40.600 BTU

Compressor, Tee, Turk, mte190yt, 1/4 hp, Double door refrigerator, r134, Lbp, 189 W

written by Amina | 25 October 2023



Compressor, Tee, Turk, mte190yt, 1/4 hp, Double door refrigerator, r134, Lbp, 189 W

Compressor, NUY90RAa, 3/8 hpb, r290, Compresor Cubigel

written by Amina | 25 October 2023



Private Picture Copyright : WWW.MBSM.PRO

Compressor, NUY90RAa, 3/8 hpb, r290, Compresor Cubigel

Compressor, Copeland,
Ck20k3pfv, 20000 btu, 5040
kcal, 5861 w, 9.6 AC
Compressor, Copeland,

Ck20k3pfv, 1.5 hp

written by Amina | 25 October 2023



Private Picture Copyright : WWW.MBSM.PRO

Compressor, Copeland, Ck20k3pfv, 20000 btu, 5040 kcal, 5861 w,
9.6 AC Compressor, Copeland, Ck20k3pfv, 1.5 hp

Water, dispenser, compressor, ASV25H, 1/13 hp, r134a, 1bp

written by Amina | 25 October 2023



Water, dispenser, compressor, ASV25H, 1/13 hp, r134a, lbp

Refrigeration, Compressor, 1/10 HP, R-134A, Samsung, CD130C-L1Z2

written by Amina | 25 October 2023



Private Picture Copyright : WWW.MBSM.PRO

Refrigeration, Compressor, 1/10 HP, R-134A, Samsung, CD130C-L1Z2

Huayi, HYE60YL63, Compressor, 1/5 hp, r134a, 146 kcal, full copper

written by Amina | 25 October 2023



Private Picture Copyright : WWW.MBSM.PRO

Huayi, HYE60YL63, Compressor, 1/5 hp, r134a, 146 kcal

**Deep Freezer, Crown, CR120w,
120 L, 140 W, 1.1 a, r600a,
40 g, 4.23 feet, Compressor ,
1/6 hp, Lbp, 140 w,**

written by Amina | 25 October 2023



Deep Freezer, Crown, CR120w, 120 L, 140 W, 1.1 a, r600a, 40 g,
4.23 feet, Compressor , 1/6 hp, Lbp, 140 w,

**Mitsubishi, Electric, fixed
frequency, NH41VNHT 2.55HP,
single-phase, 220V, rotary,
air condition, 26000 btu/h**

written by Amina | 25 October 2023



SIAM COMPRESSOR INDUSTRY

MITSUBISHI ELECTRIC CO., LTD.

REFRIGERANT COMPRESSOR
MODEL **NH41VNHT**

MANUFACTURING DATE 16092010

POWER SOURCE
220-240V 1~ 50Hz

POWER INPUT 2410 W AT 50 HZ

LRA 70/77 A

REFRIGERANT R-22

OIL 1.30 L

AP 2.74 MPa

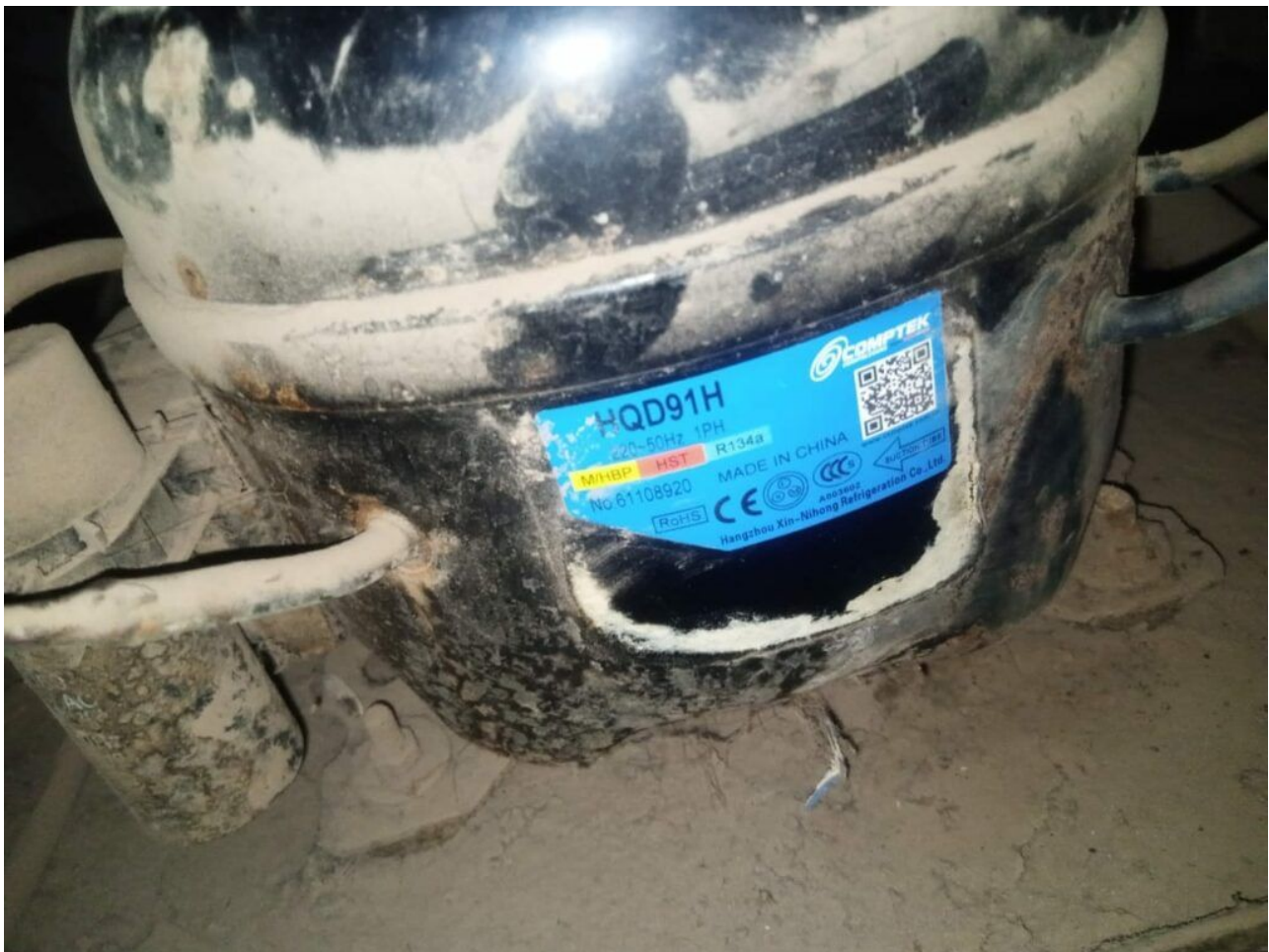
SP 10.5 MPa

THERMALLY PROTECTED

Mitsubishi, Electric, fixed frequency, NH41VNHT 2.55HP, single-phase, 220V, rotary, air condition, 26000 btu/h

COMPTEK, Compressor, HALQD91HHR, HQD91H, 1/4 hp++, 1/3 hp-, m/hbp, 250 w, 8.8 cm³, r134a

written by Amina | 25 October 2023



Private Picture Copyright : WWW.MBSM.PRO

COMPTEK, Compressor, HALQD91HHR, HQD91H, 1/4 hp++, m/hbp, 250 w, 8.8 cm³