

**Mbsm.pro, Compressor,  
Danfoss, 1/4hp++, mhbp,  
GL90an, R134a, 220-230v, 1ph,  
50hz, Csir**

written by Lilianne | 3 May 2022



Mbsm.pro, Compressor, Danfoss, 1/4hp++, mhbp, GL90an, R134a,  
220-230v, 1ph, 50hz, Csir

**mbsm.pro\_compressor\_zem\_  
egm66af\_1\_6 hp \_ 127 w \_  
mbsm dot pro.pdf**

written by Lilianne | 3 May 2022

mbsm.pro\_compressor\_zem\_egm66af\_1\_6 hp \_ 127 w \_ mbsm dot  
pro.pdf

Mbsm\_dot\_pro\_private\_PDFmbsm.pro\_-compressor\_-zem\_-  
egm66af\_-1\_6-hp-\_-127-w-\_-mbsm-dot-proTélécharger

**ZMC**

**EGM66AF**

2204

220-240V~50Hz



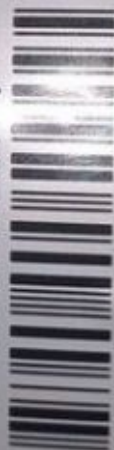
**R134 a**

506030316613

MADE IN EGYPT

3

SUCTION



066

0018585



---

# **Mbsm.pro, Compressor, Zem, EGM66Af, 1/6 Hp , 127 W**

written by Lilianne | 3 May 2022

**ZMC**

**EGM66AF**

2204

220-240V~50Hz



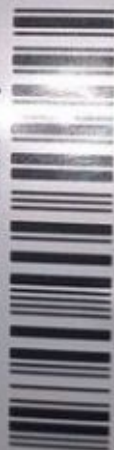
**R134 a**

506030316613

MADE IN EGYPT

3

SUCTION



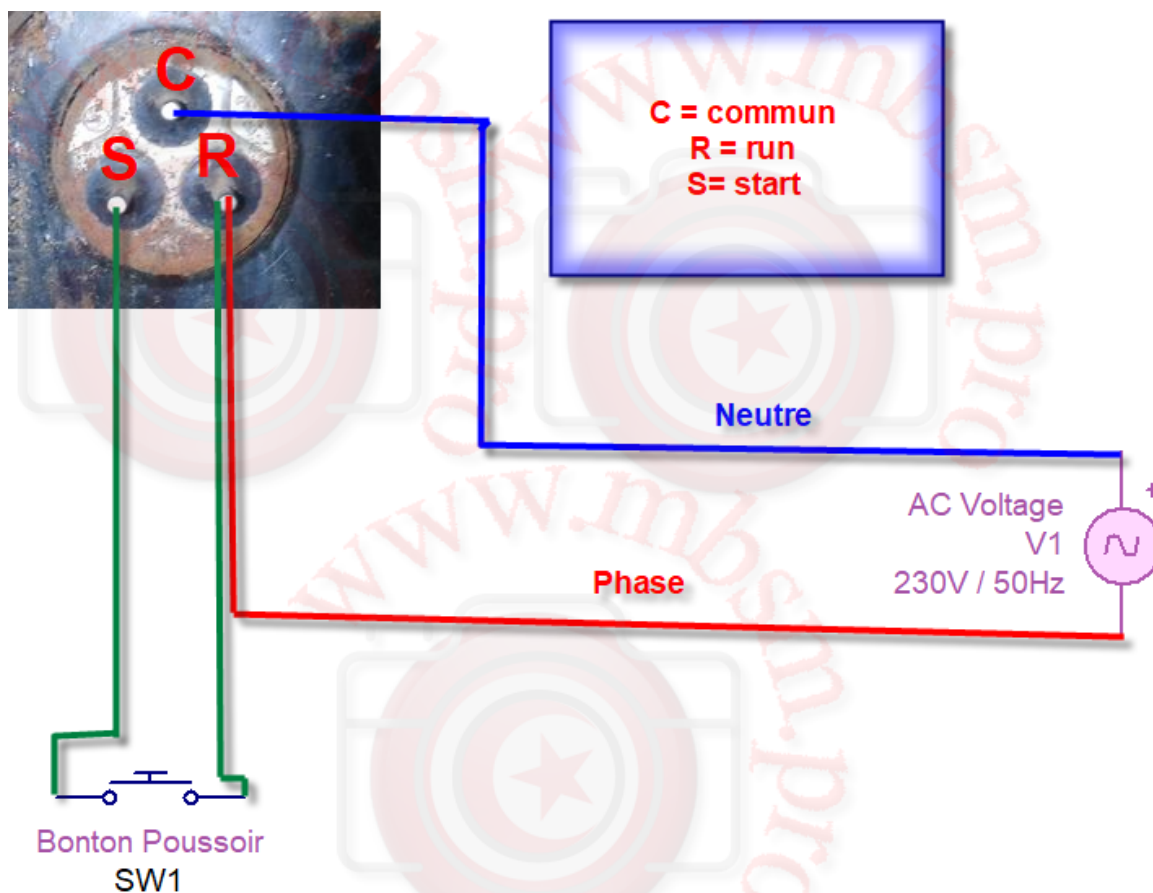
066

0018585



# Mbsm.pro, pdf, How can this compressor be connected and operated directly without the Waverwood relay... How to connect simply?

written by Lilianne | 3 May 2022



Mbsm.pro, pdf, How can this compressor be connected and operated directly without the Waverwood relay... How to connect simply?

---

**Mbsm.pro, Bristol,  
Compressor, H24B22QABJC,  
21800 btu/h, H24BQ SERIES,  
6397 W, 230 v, 1 Phase, Ira  
52 A, Compressors, Chillers &  
Condensers, high temperature,  
R22, basic model, model B,  
PSC capacitor, line break  
internal, capillarie, 0.64/80  
cm, 0.70/100 cm**

written by Lilianne | 3 May 2022





Mbsm.pro, Bristol, Compressor, H24B22QABJC, 21800 btu/h, H24BQ SERIES, 6397 W, 230 v, 1 Phase, Ira 52 A, Compressors, Chillers & Condensers, high temperature, R22, basic model, model B, PSC capacitor, line break internal, capillarie, 0.64/80 cm, 0.70/100 cm

---

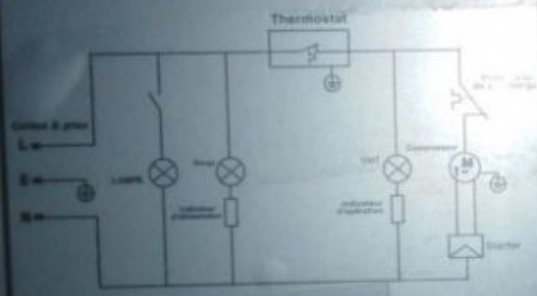
**Mbsm.pro, Congélateur GN-bd(w)-370, Gean Electronique, Made in Chine, T classe, 370 L, Compressor, 1/4 Hp, R134A, 105 G, 1.3 A, 220 V, Freezer horizontal, Filtre 20 G, Capilaire 0.036, 2 M, Thermostat mecanique**

written by Lilianne | 3 May 2022

**Géant**  
ELECTRONICS

Congélateur GN-BD(W)-370

Schéma électrique



بلد المنشأ: الصين

CLIMAT DE TYPE:	T CLASSE
CLASSIFICATION DE	
ELECTRICITE RESISTANTE:	I
VOLUME DE STOCKAGE:	370L
VOLUME DU CONGELATEUR :	370L
FROZEN CAPACITE:	12kg/24h
TENSION NOMINALE :	220V~
FREQUENCE NOMINALE :	50Hz
COURANT :	1.3A
VALEUR DE BRUIT:	42dB (A)
ALIMENTATION DE LAMPE NOMINALE:	2W
QUANTITE DE REFRIGERANT :	R134a/105g
GAZ D'ISOLATION:	CsHrs

CJ160337003172

Private Picture Copyright: [WWW.MBSM.PRO](http://WWW.MBSM.PRO)

Mbsm.pro, Congélateur GN-bd(w)-370, Gean Electronique, Made in Chine, T classe, 370 L, Compressor, 1/4 Hp, R134A, 105 G, 1.3 A, 220 V, Freezer horizontal, Filtre 20 G, Capilaire 0.036, 2 M, Thermostat mecanique

---

# Mbsm.pro, Compressor, Files, Pdf, Panasonic compressor, R134a, D-Series, Low Back Pressure

written by Jamila | 3 May 2022



Private Picture Copyright : [WWW.MBSM.PRO](http://WWW.MBSM.PRO)

Mbsm.pro, Compressor, Files, Pdf, Panasonic compressor, R134a, D-Series, Low Back Pressure

---

**Mbsm.pro, SWZ12, 000DK02D,  
2eDM02000, Intercold,  
Freezer, swz1/170, 222 w,  
230v, Compressor, 1/4 hp,  
R134a, 210 G, 290 L,  
Intercold horizontal freezers  
for frozen**

written by Lilianne | 3 May 2022



Private Picture Copyright: [WWW.MBSM.PRO](http://WWW.MBSM.PRO)

Mbsm.pro, SWZ12, 000DK02D, 2eDM02000, Intercold, Freezer,  
swz1/170, 222 w, 230v, Compressor, 1/4 hp, R134a, 210 G, 290  
L, Intercold horizontal freezers for frozen

---

# Mbsm.pro, compressor, TS33vdec, air conditioner, Mitsubishi Hermetic, Refrigeration, Rotary Compressor, Model Ts33vdec, 1 Hp, 10098 btu/h, 945 w, R410A

written by Lilianne | 3 May 2022



Private Picture Copyright: [WWW.MBSM.PRO](http://WWW.MBSM.PRO)

TS33vdec

---

# Mbsm.pro, Pdf, Is it useful

# to fill gas r22 in place of r410

written by Lilianne | 3 May 2022



Mbsm.pro, Pdf, Is it useful to fill gas r22 in place of r410