

**Mbsm.pro, 1/5 HP ,170 w,
SL23YE-5, DAEW00, HERMETIC
COMPRESSOR ,Turkey
Refrigeration & Heat , R12**

written by Jamila | 28 September 2018

**Mbsm.pro, 1/5 HP ,170 w, SL23YE-5,
DAEW00, HERMETIC COMPRESSOR ,Turkey
Refrigeration & Heat , R12**



SL23YE-5
AC 20 240V 50Hz
LRF 7.74 F12
THERMALLY PROTECT
DAEWOO ELECTRONIC Co., Ltd.
MADE IN KOREA
9909021362



Picture5 Mbsm Dot Pro : www.mbsm.pro

Product Details

Company Profile

Inquiry Records(4)

Our Company is since 1969. All Refrigerant parts Trade. All refrigerants products import export. Air Condition Compressor, Other parts, Freezer Room parts, insulation, valve, all refrigerant, in Turkey...

Basic Information

Business Type: Trading Company, Distributor/Wholesaler
Product/Service (We Sell): Refrigerant Parts,Air COnditioner,Copper,Heat Exhancer,Refrigerator,Condensing Unit,Condenser,Compressor
Number of Employees: 11 - 50 People

Trade & Market

Main Markets: Eastern Europe,Southeast Asia,Africa,Mid East,Eastern Asia,Western Europe

Factory Information

Factory Location: Keresteci Recep Sk. No.10



Picture5 Mbsm Dot Pro : www.mbsm.pro

Item specifics

Place of Origin: Seoul South Korea

JX51LHS5: 1/6 - ST

Port: ISTANBUL

HSL21YE-5-C: 1/5 - OC

HGH25YE-5: 1/4 - ST

HGH23YE-5: 1/5 - ST

HSL25YE-5-C: 1/4 - OC

Certification: CE

DM99HHG5: 3/8 - ST

Type: Refrigeration Compressor

Application: Refrigeration Parts

PictureS Mbsm Dot Pro : www.mbsm.pro

Ohter 134A

FREON R134A GASES.

220V - 50~60HZ

LBP and HBP Application

MODEL	CC/REV	(W)	(Kcal)
JX51LHS5	5,1	129	111
HSL21YE-5-C	6,7	176	151
HSL25YE-5-C	7,7	198	170
HGH23YE-5	7,0	659	567
HGH25YE-5	7,7	803	691
DM99HHG5	9,9	1093	940

PictureS Mbsm Dot Pro : www.mbsm.pro

Mbsm.pro , Compresseur frigorifique, Embraco Aspera ,T2178GK , 1Hp ,PIÈCES FRIGO, 404A , 220-240 V 50 Hz

written by Jamila | 28 September 2018



Mbsm.pro , Compresseur frigorifique, Embraco Aspera ,T2178GK , 1Hp ,PIÈCES FRIGO, 404A , 220-240 V 50 Hz



Select text



GAS R-404A / R-404A GAS



- Compresor hermético / *Hermetic compressor*
 - Monofásico / *Single-phase*
 - Voltaje / *Voltage: 220V - 50 Hz*

- Serie J, equipados con
with case and valve

BAJA TEMPERATURA / *LOW TEMPERATURE*

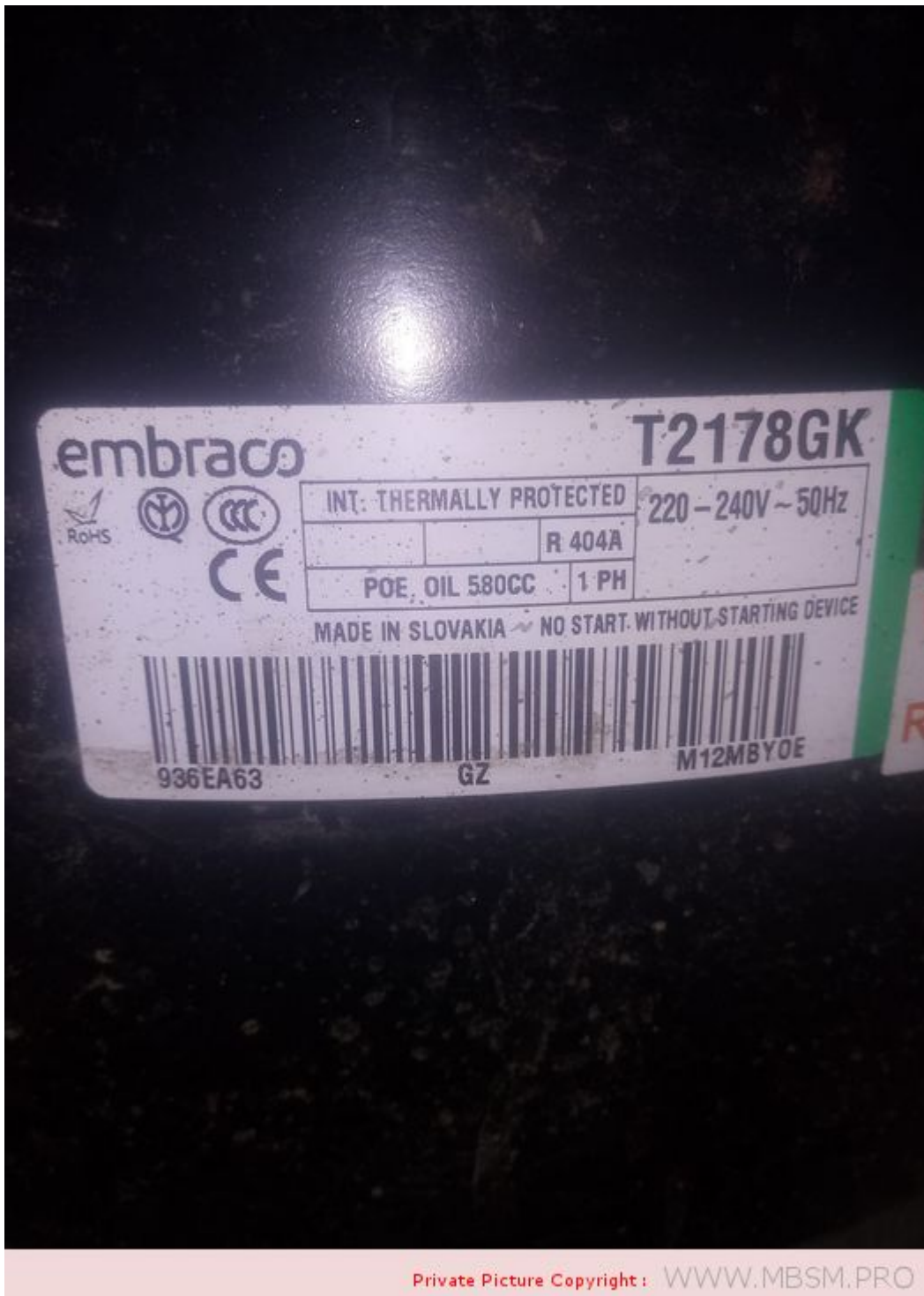
Código <i>Code</i>	Modelos <i>Models</i>	HP <i>HP</i>	cm ³ <i>cm³</i>	Temperatura de evap	
				-25°C	
				W	
14341	NE2125GK	1/3	8.78	300	
20792	NE2134GK	3/8	12.12	420	
20793	T2155GK	1/2	14.50	520	
20796	T2168GK	5/8	17.40	680	
21086	T2178GK	1	20.40	830	
21082	NJ2192GK	3/4	26.20	1020	
20850	NJ2212GK	1 1/4	34.37	1330	

ALTA TEMPERATURA / *HIGH TEMPERATURE*

Código <i>Code</i>	Modelos <i>Models</i>	HP <i>HP</i>	cm ³ <i>cm³</i>	Temperatura de evaporac	
				-10°C	-5°C
				W	W
21069	NB6144GK	1/5	4.52	300	380
21070	NB6152GK	1/5	5.02	350	440
36596	NB6165GK	1/4	6.05	430	530
21075	NE9213GK	1/2	12.12	860	1080
20762	T6217GK	5/8	14.50	960	
36557	T6220GK	3/4	17.40	1160	
21076	NJ9226GK	1	21.70	1580	



Mbsm_dot_pro_private_PDF_compresseur-embraco-aspera-t2478gkTélécharger



Détails techniques

puissance 1 HP – cylindrée 20,40 cc

220/240V 50HZ

ASPERA

FRIULINOX

Friulinox Armoire réfrigérée AF12 -20, AF12 PA, AF12-14, AF12-14 VTR, AF12-14 VTRP, AF14, AF14 -22 SILVER VTR, AF6-1, AF6-7, AF6-7 VTR, AF7, AF7 -20 VTR, AF7 -22 SILVER VTR, AF7 ICE, AF7

VTR, AF7-14, AG60 GOLD, AG60 H20, AG60 SILVER, AG60 SILVERP, AG60P, AL-EN SUPER, AL-EN1, AL-EN1 SUPER, AL-EN1P, AL-EN2, AL-EN2 SUPER, AL-ENP, AP12-14, AP14, AP6, AP6-12, AP6-7, AP7, AP7-14, AR12-14, AR12-14 VTR, AR14, AR6-12, AR6-12 VTR, AR6-7, AR6-7 VTR, AR7, AR7-14, AR7-14 VTR, AR-EN GOLD, AR-EN SILVER, AR-EN1, AR-EN1 GOLD, AR-EN1 VTR, AR-EN2, AR-ENP, ARF142, ARF212 VTR, ARP142, ARP-EN1, ARP-EN2, ARRF21 VTR, EN GOLD, EN P, EN SILVER, EN1, EN1 GOLD, EN1 H20, EN1 H20 SILVER, EN1 SILVER, EN1 VTR, EN2, EN2 H20

FriulinoxCellulede refroidissement ARP122

FriulinoxVitrineréfrigérée AFP122, AFP142, ARF122

ZANUSSI

ZanussiArmoireréfrigérée ALF110 (110071), ALNF220 (110073), ALF110 (110074), ALF120 (110075), ALNF220 (110079), ADN111 (110757), AKP110 (111000), AKS110 (111001), AKP120 (111002), AKN110 (111009), AKN120 (111010), AKP110UK (111121), AKN110UK (111123), AKNF220 (111127), AKF110UK (111129), AKF110 (111137), AKF120 (111138), ASF110 (112030), ASF110 (112032), AZP2203 (113228), AZP220360 (113229), ALN2203 (113231), AZP13430 (113234), AZF2203 (113236), AZF13430 (113237), MRF601/86 (726059), ETZ601 (726165), ETZ602 (726166), ESQC41F (726171), ESQC41FR (726172), ESQF41F (726173), ETE601 (726178), ETE602 (726179), ETE601L (726184), ETZ601L (726185), RS13RX2F (726321), RS13FX2F (726323), RS13DX2F (726335), RS13PX2F (726459), RS13PX2F6 (726461), RS13P42F (726462), RS13FX42F (726464), RS13DFX2F (726465), RS13R32F (726467), SB1300X2F (726468), RS13PW2F (726475), RS13FW2F (726476), MRF601/86 (726500), RS13FX2F6 (726688), EKZ601 (726890), EKZ602 (726891), EKE601 (726939), EKE602 (726940), EKE601L (726949), EKZ601L (726950), RS13RX2FG (726967), RS13FX2FG (726968), RS13P42F (727128), RS13FX42F (727129), RS13RX4H (727157), RS13FX4H (727158), KLP1300R (728059), KLP1300F (728060), RS13PX2FD (728063), E06C0M1V (728077), E06C1M1V (728078), E06C0D1V (728081), C06FD1G (728173), FGD36 (728271), RH06RD1G (728408), C06FD1G (728415), RS05RD1G (728433),

E05N0D1C (728457), E05C0D1C (728458), E06N0D1C (728465),
E06N0D2C (728466), E06N0D1V (728467), E06C0D1C (728468),
E06C0D2C (728469), E06C0D1V (728470), E06N0D1C (728522),
E06C0D1C (728523), KLN1300R (728605), KLP1300R (728606),
KEP1300R (728607), KLP1300R (728608), KLP1300F (728609),
KEP1300F (728610), KLP1300F (728611), EMVN500 (730005),
DVP500V11C (730677), DVP501V11C (730678), DVP600V11C (730683),
DVP601V11C (730684), DVP602V11C (730685), DVP600V12C (730686),
DVP601V12C (730687), DVP602V12C (730688), DVN600V11C (730701),
DVN601V11C (730702), DVN602V11C (730703), DVN600V12C (730704),
DVN601V12C (730705), DVN602V12C (730706), DVN500V11C (730721),
DVN501V11C (730722), MVP600V11C (730725), MVP601V11C (730726),
MVP602V11C (730727), MVP600V12C (730728), MVP601V12C (730729),
MVN600V11C (730741), MVN601V11C (730742), MVN600V12C (730743),
MVN601V12C (730744), DVP500V11C (730768), MVP501V11C (730769),
MVP502V11C (730770), MVN500V11C (730780), MVN501V11C (730781),
MLC601V11C (730938), MLC602V11C (730939), DVC500V11C (731242),
DVC501V11C (731243), MVC502V11C (731244), DVC600 (731250),
DVC601 (731251), MVC602 (731252), DVC600 (731255), DVC601
(731256), MVC600V11C (731282), MVC601V11C (731283), MVC600V12C
(731284), MVC601V12C (731285), MVC500V11C (731294), MVC501V11C
(731295), DVC602 (731302), DVC602 (731303), DVNN13022C
(732073), DVNN13122C (732074), MVNN13022C (732079), MVNN13122C
(732080), DVNC13022C (732095), EDVC13122C (732096), MVNC13022C
(732103), MVNC13122C (732110), MLC600V11C (732251), MLC601V11C
(732255), MLC602V11C (732257), DVP6VP12CC (734079),
PDVN901V11C (737216), PDVN901V12C (737217), PDVN907V11C
(737218), PDVN907V12C (737219), PDVC901V11C (737220),
PDVN907V12C (737221), PDVC907V11C (737222), PDVC907V11C
(737223), ILF120 (770508), RVPE061 (771100), RSPE061 (771101),
RVPE062 (771102), RVNE061 (771108), RVNE062 (771109), KVPE662
(771115), RPPE061 (771155), ILF110 (771537), ZLNF220 (771539),
RD13PX2F (790018), RD13FX2F (790019)

ZanussiCellulede refroidissement ESQC41F (691044), ESQC41FR
(691045), ESQF41F (691046), ESQF41FR (691047), ESQF41FR
(726144)

ZanussiCongélateurcoffre MRF4808660 (726042), MRF401/86 (726058), MRF240/86 (726060), MRF480/86 (726061)

ZanussiTableréfrigérée STRP1101 (113084), STRP1102 (113088), STRP1601 (113092), TRN224C (113102), TRN224D (113103), TRN224E (113104), STRP1602 (113105), STRP1603 (113106), STRP2201 (113107), STRP2202 (113108), STRP2203 (113109), STRP1101S (113128), STRP1601S (113129), STRP2201S (113130), STRP1602R (113131), TRN132A (113150), TRN132B (113151), TRN132C (113152), TRNA132A (113153), TRNA132B (113154), TRNA132C (113155), TRRN132A (113156), TRRN132B (113157), TRRN132C (113158), TRN183A (113159), TRN183B (113160), TRN183C (113161), TRN183D (113162), TRNA183A (113163), TRNA183B (113164), TRNA183C (113165), TRNA183D (113166), TRRN183A (113167), TRRN183B (113168), TRRN183C (113169), TRRN183D (113170), TRN224A (113171), TRN224B (113172), TRNA224A (113173), TRNA224B (113174), TRRN224A (113175), TRRN224B (113176), TRF132A (113177), TRFA132A (113178), TRRF132A (113179), TRF183A (113180), TRFA183A (113181), TRRF183A (113182), TRN132AE (113183), TRN183AE (113184), TRN224AE (113185), TRF132AE (113186), TRF183AE (113187), STRP1603R (113192), STRP2201R (113193), STRP2202R (113194), STRP2203R (113195), STRP1101R (113196), STRP1102R (113197), STRP1601R (113198), TCGS/1V7T (121856), TCGS/2V7T (121857), TCGS/1VC27 (121858), TCGS/2V2C7 (121859), TCGRS/1V7T (121866), TCGRS/2V7T (121867), TCGRS/1VC2 (121868), TCGRS/2V2 (121869), TCGS2VC27T (121905), RCSN2M2 (726139), RCSN2M12 (726140), RCSN3M3 (726141), RCSN3M22 (726145), RCSN3M14 (726146), RCSN4M4 (726147), RCSN4M32 (726148), RCSN4M24 (726170), RCSN2M2U (726182), RCSN3M3U (726188), RCSN4M4U (726197), RCDR4M24 (726199), RCDR4M16 (726200), RCDR4M08 (726201), RCSN2M2R (726202), RCSN2M12R (726203), RCSN3M3R (726210), RCSN3M22R (726211), RCSN3M14R (726212), RCSN4M4R (726213), RCSN4M32R (726220), RCSN4M24R (726221), RCDR2M20 (726408), RCDR2M12 (726409), RCDR2M20U (726410), RCDR2M12U (726411), RCDR2M04R (726412), RCDR3M22 (726413), RCDR3M0U (726414), RCDR3M22U (726415), RCDE4M40 (726416), RCDR4M32 (726417), RCDR4M40U

(726418), RCDR4M32U (726419), RCDFM20UX (726421), RCDF3M30U
(726422), RCER2M2 (726423), RCER3M3 (726424), RCER4M4
(726425), RCEF2M2X (726426), RCEF3M3 (726427), RCDR2M20
(726550), RCDR2M12 (726551), RCDR2M04 (726552), RCDR2M20U
(726553), RCDR2M12U (726554), RCDR2M04U (726555), RCDR2M20R
(726556), RCDR2M12R (726557), RCDR2M04R (726558), RCDR3M30
(726559), RCDR3M22 (726560), RCDR3M14 (726561), RCDR3M06
(726562), RCDR3M0U (726563), RCDR3M22U (726564), RCDR3M14U
(726565), RCDR3M06U (726566), RCDR3M30R (726567), RCDR3M22R
(726568), RCDR3M14R (726569), RCDR3M06R (726570), RCDR4M40
(726571), RCDR4M32 (726572), RCDR4M40U (726573), RCDR4M32U
(726574), RCDR4M40R (726575), RCDR4M32R (726576), RCDF2M20
(726577), RCDFM20U (726578), RCDF2M20R (726579), RCDF3M30
(726580), RCDF3M30U (726581), RCDF3M30R (726582), RCSER2M2
(726583), RCSER3M3 (726584), RCSER4M4 (726585), RCEF2M2
(726586), RCEF3M3 (726587), RCSN2M2T (726668), RCSN3M3T
(726669), RCSN4M4T (726670), RCSER2M2U (726682), RCSER3M3U
(726683), RCER4M4U (726684), RCEF2M2U (726685), RCEF3M3U
(726686), RCSF2M24 (727009), RCSF3M34 (727010), HB2PNTR
(727108), HB3PNTR (727109), HB4PNTR (727110), HB2P (728086),
HB1P2C12 (728139), HB1P3C (728157), HB4C (728158), HB3P
(728207), HB2P2C (728235), EDON590124 (728238), EDON590116
(728239), EDON590108 (728240), HB1P4C (728241), HB6C (728242),
HB4P (728243), HB3P2C (728244), HB2P4C (728245), HB8C
(728246), HB2PR (728247), HB1P2CR (728248), HB1P3CR (728254),
HB4CR (728259), HB3PR (728264), HB2P2CR (728294), HB1P4CR
(728295), HB6CR (728296), HB4PR (728297), HB3P2CR (728298),
HB2P4CR (728299), HB8CR (728300), HB1P2C (728302), RCHBF1P2C
(728304), RCHBF2P2C (728305), S02P200I (728352), S02P120I
(728353), S04P300I (728354), S04P220I (728361), S04P140I
(728362), S05P400I (728363), S05P320I (728364), E29N200I
(728368), E29N120I (728369), E29N040I (728370), E29N200IA
(728371), E29N120IA (728372), E29N040IA (728373), E29N200R
(728374), E29N120R (728375), E29N040R (728376), E44N300I
(728377), E44N220I (728378), E44N140I (728379), E44N060I
(728380), E44N300IA (728381), E44N220IA (728382), E44N140IA
(728383), E44N060IA (728384), E44N300R (728385), E44N220R

(728386), E44N140R (728387), E44N060R (728388), E59N400I (728389), E59N320I (728390), E59N400IA (728391), E59N320IA (728392), E59N400R (728393), E59N310R (728394), E29C200I (728395), E29C200IA (728396), E29C200R (728397), E44C300I (728398), E44C300IA (728399), E44C300R (728400), S05P240I (728401), ED0N2912SE (728492), ED0N4413SE (728493), ED0N5914SE (728494), ED0C2912SE (728495), ED0C4413SE (728496), HB2PU (728509), HB3PU (728510), HB4PU (728511), RCSF2M2 (728512), RCSF3M3 (728517), RCSF2M12 (728518), RCSF3M22 (728519), S04P220R (728536), S04P140R (728537), S05P400R (728538), S05P320R (728539), S05P240R (728540), HB1P2CRN (728552), HB1P3CRN (728554), HB4CRN (728556), HB2P2CRN (728558), HB1P4CRN (728560), HB6CRN (728562), HB3P2CRN (728564), HB2P4CRN (728566), HB8CRN (728568), HBF2PN (728569), HBF1P2CN (728570), HBF3PN (728571), RCHBF2P2CN (728573), S02P200IA (728585), S04P300IA (728586), S05P400IA (728587), S02P200R (728588), S02P120R (728589), S04P300R (728590), RCHBF2P (728635), RCHBF3P (728636)

...et d'autres dispositifs

– ALPENINOX

T2178GK – ASPERA

01AS0970 – ATEL – ELECTROLUX PROFESSIONAL

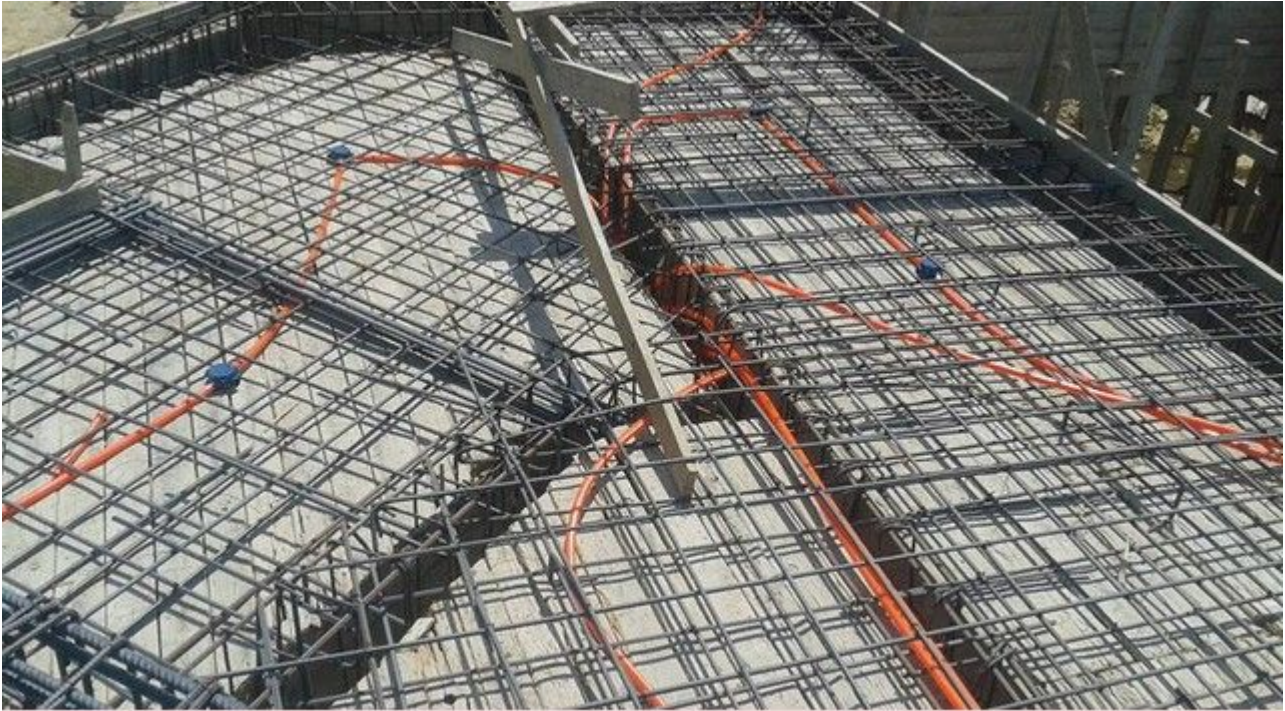
T2178GK – EMBRACO – FRIULINOX – INDESIT – UNIVERBAR – WHIRLPOOL – ZANUSSI

...numéros de fabricant supplémentaires possibles

**Mbsm.pro, The risk of
extending the electric hoses**

under the reinforcing steel for ceilings

written by Jamila | 28 September 2018



PictureS Mbsm Dot Pro : www.mbsm.pro

Mbsm.pro, The risk of extending the electric hoses under the reinforcing steel for ceilings

**Mbsm.pro, COMPRESOR DANFOSS
,FR7.5B ,1/5 Hp , R-12
,freezer ,capillary 260 cm ,
0.31**

written by Jamila | 28 September 2018

Mbsm.pro, COMPRESOR DANFOSS ,FR7.5B ,1/5 Hp , R-12 ,freezer

,capillary 260 cm , 0.31

**Mbsm.pro , COMPRESSEUR ,
SC18CLX.2 , DANFOSS SECOP,
R404A/R507, 5/8HP , 1PH , Deep
Freeze Comptoire,
Alimentation 220-240 V 50 Hz**

written by Jamila | 28 September 2018



PictureS Mbsm Dot Pro : www.mbsm.pro

Mbsm.pro , COMPRESSEUR , SC18CLX.2 , DANFOSS SECOP, R404A/R507,
5/8HP , 1PH , Deep Freeze Comptoire, Alimentation 220-240 V 50
Hz

Mbsm.pro , Qb91c19gax5 , 1/4

**hp, qb110c21rpx5, 1/3 hp,
Panasonic ,Compressor cooling
,1Ph ,220V**

written by Jamila | 28 September 2018



Mbsm.pro , Qb91c19gax5 ,Panasonic ,Compressor cooling , 1/3HP
,236W ,1Ph ,220V

**Mbsm.pro, conséquence , de
mal fixer ,un chauffe bain
électrique 100L**

written by Jamila | 28 September 2018



PictureS Mbsm Dot Pro : www.mbsm.pro

1. Il peut arriver que les fixations du nouveau chauffe-eau correspondent à celles de l'ancien, mais c'est assez rare. Le plus souvent, vous devrez prendre les mesures des points d'accrochage du ballon, en fonction de la hauteur désirée. Un gabarit de perçage, souvent fourni par le fabricant, facilite le travail.

Mbsm.pro , Electrodesionisation EDI, Eau ne conduit pas le courant

written by Jamila | 28 September 2018

La production d'eau de haute pureté a généralement utilisé une combinaison de procédés de séparation par membrane et d'échange d'ion

mbsm.pro, COMPRESSEUR, GUY75AA , R134 , 1/5 HP

written by Jamila | 28 September 2018



PictureS Mbsm Dot Pro : www.mbsm.pro

Compressors of the hermetic type from the manufacturer ACC Cubigel Huayi Electrolux ZEM can be found in our online shop category compressors.

Mbsm.pro, Réfrigérateur, remplacement d'un moteur, R600a , par un ,moteur R134a

written by Jamila | 28 September 2018

Bonsoir, MBSM.PRO

le remplacement d'un compresseur R600A par un compresseur R134A est possible a condition: