

**Mbsm.pro, Compressor,
Embraco, ASK75HG, 1/6 Hp++,
Big, 1/5 Hp-, HMBP, R134a,
416 W, 220-240 V 50 Hz**

written by Lilianne | 3 March 2022



Mbsm.pro, Compressor, Embraco, ASK75HG, 1/6 Hp++, Big, 1/5 Hp-, HMBP, R134a, 416 W, 220-240 V 50 Hz,

Sangchai refrigeration, Fl series, Rl series, Cl series, Hitachi Compressor, FL1675-sc, 1/5 Hp, R-134A, Low back pressure, 160 w, Displacement 7.5 cm cube, 220-240 v 50 hz

written by Lilianne | 3 March 2022

Sangchai refrigeration, Fl series, Rl series, Cl series, Hitachi Compressor, FL1675-sc, 1/5 Hp, R-134A, Low back pressure, 160 w, Displacement 7.5, 220-240 v 50 hz



Hitachi Hermetic Compressors

FL Series

STANDARD MODEL

Application & Refrigerant LBP R134a

Model	Nominal Power		Cooling Capacity				D cm3	Cooling			O cm3	Wg Kg	Motor Type	Power Source					Dimension Type - H
	HP	W	Hz	W	Kcal/h	BTU/h		N	Oil	Fan				1	2	3	4	5	
FL0634	1/12	65	50	78	67	266	3.42				200	6.8		•			•	Type1-165	
			60	90	77	307								•	•	•			
FL0739	1/10	75	50	95	82	324	3.94				270	7.8		•			•	Type1-179	
			60	108	93	368								•	•	•			
FL0845	1/8	85	50	105	90	358	4.50				270	8.1	RSIR	•			•	Type2-180	
			60	118	101	403								•	•	•			
FL1052	1/6	100	50	120	103	409	5.19	•			270	8.3	CSIR	•			•	Type1-195	
			60	140	120	478								•	•	•			
FL1157	1/6	110	50	135	116	461	5.70				240	8.7		•			•	Type2-200	
			60	158	136	539								•	•	•			
FL1262	1/5	125	50	150	129	512	6.23	•			320	9.5		•			•	Type3-211	
			60	170	146	580								•	•	•			
FL1675	1/5	160	50	185	159	631	7.47		•	•	300	10.6		•			•	Type4-216	
			60	210	181	717								•	•	•			
FL1888	1/4	180	50	215	185	734	8.83		•	•	300	11.1		•			•	Type4-216	
			60	250	215	853								•	•	•			

Private Picture Copyright : WWW.MBSM.PRO



Private Picture Copyright : WWW.MBSM.PRO



**Rsir/Rscr ,Compresseur , ACC
Cubigel ,Electrolux ,HTH14AA
,R600 , 220 / 240 V/50
Hz,1/4HP ,Engine 14 cm³,LBP
,245W**

written by Lilianne | 3 March 2022

Rsir/Rscr ,Compresseur , ACC Cubigel ,Electrolux ,HTH14AA
,R600 , 220 / 240 V/50 Hz, 9,37kg ,1/4HP ,Engine 14 cm³,LBP
,245W

**COMPRESSOR, EMBRACO ,
fgs130ha, LBP (Low Back
Pressure) ,RSCR ,316 W ,1/3+
HP ,220-240 V 50 Hz ,1080
Btu/h ,11,14 c.c.,R134a**

written by Lilianne | 3 March 2022



 **Embraco** FGS130HAW



THERMALLY PROTECTED

10 LRA

R 134a

1 PH

220-240V~

50Hz

JOINVILLE-SC
MADE IN BRAZIL

NO START WITHOUT STARTING DEVICE



513200607 FAB 1 26/JAN/05 E05DDHWA

HFC - 134a

 注意



高温注意

Compressore	EMBRACO
Modello	FGS130HAW
Altezza (mm)	
Gas	R134a
Tensione	220-240 V 50 Hz
Applicazione	LBP (Low Back Pressure)
Test Condition	ASHRAE LBP 32
Cilindrata	11,14 c.c.
Motore	RSCR
Potenza (HP)	1/3+
Cap. Frigor. Watt	316
Cap. Frigor. Kcal	272
Cap. Frigor. Btu/h	1080
COP (W/W)	1,49
Watt assorbiti (W)	
Dispositivo di Adv.	
Condensatore	
Tipo Raffreddamento	
Imballo (Pcs/Pallet)	

**HERMETIC , AW5524EK
, Compressor , 20,950 BTU
, 230/1/60 R-22 , : 220-240**

V/50 Hz., 1 Phase , 1.745833333 TON

written by Lilianne | 3 March 2022

Electrical : 220-240 V/50 Hz. 1 Phase

Nominal Performance

Capacity 6,140 / – Watts

20,950 / – BTU/Hr

5,280 / – Kcal/Hr

Power Input 2,089 / – Watts

Locked Rotor Amps 51.30 / – Amps

Max Continuous Current – / – Amps

Rated Load Amps 9.64 / – Amps

COP 2.94 / – Watts / Watts

EER 10.03 / – BTU/W-Hr

Testing Conditions

Condensing Temperature 54.40 °C 129.9 °F

Evaporating Temperature 7.20 / – °C 45.0 / – °F

Liquid Temperature 46.10 °C 115.0 °F

Return Gas Temperature 35.00 °C 95.0 °F

Ambient Temperature 35.00 °C 95.0 °F

Application

Evaporating Temp. Range HBP, A/C @ 0.00 ° C to 13.00 ° C
(32.0° F to 55.4° F)

Heat Pump -23.30 ° C to 13.00 ° C
(-9.9° F to 55.4° F)

Refrigerant R22

Refrigerant Flow Control Capillary Tube

Compressor Cooling Fan

Compressor and Motor data

Compressor Type Reciprocating

Displacement 43.10 cc.

Oil Type Mineral Oil

Oil Charge 964 cc.

Motor Type P.S.C ; 2 Pole 2,850 / – r/m

Voltage Range 198-264/- Volts 50/- Hz.

Winding Resistance at 25 ° C

Start 2.52 Ohms

Run 1.24 Ohms

Weight with Oil 27.72 Kg.

Weight with Oil and Accessories 28.05 Kg.

Electrical Components

Motor Protector

Type Internal Overload

Model Number 4042KGE661-2

Open / Close 125-135 / 50-70 ° C

1st Cycle trip at 25 ° C 50.00 Amps(main) 30.00 Amps(start)

Motor Starter

Type Potential Relay

Model Number 4043KGE681-4(RVA3G6D)

Pick Up (max.) 180.00-195.00 Volts

Drop Out (min.) 40.00-90.00 Volts

Terminal Cover KGM 901-3

Start Capacitor 88-106 μ F 330 VAC.

Disch Resistor for Start Cap –

Run Capacitor 45 μ F 370/440 VAC.

Mounting Kit

Rubber Grommet 4007KGM905-2

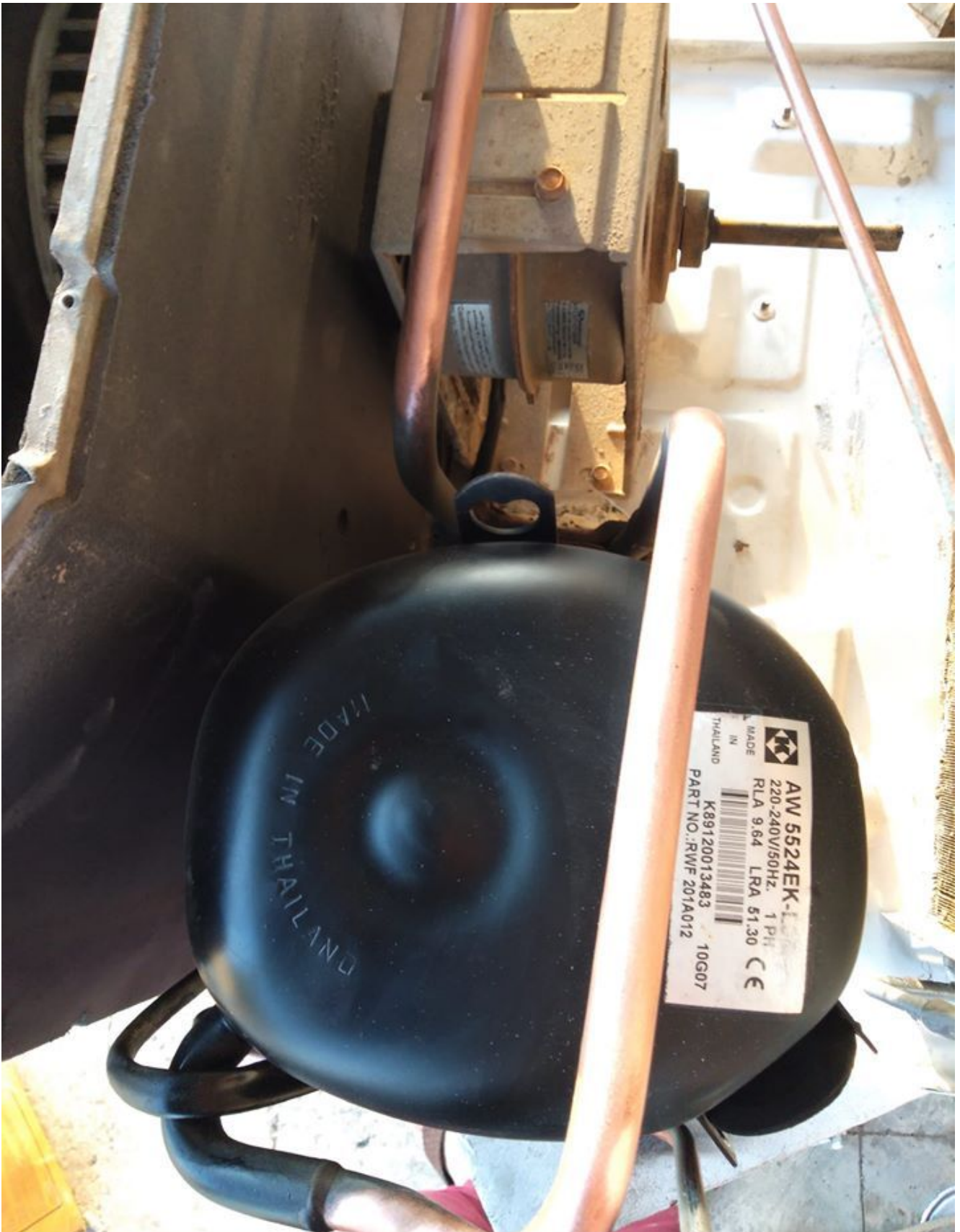
Sleeve Grommet 4023KGM903-2

Washer –

Since we are constantly improving our product , the specification are subject to change without notice.

REV. DATE C / N No.

ECN 01-04-14 ECN 0515/13





Dot Pro : www.mbsm.pro

DOCUMENTATION PDF

Mbsm_dot_pro_private_pictureAW5524EKTélécharger

Mbsm.pro, GL90TB, COMPRESSEUR ACC CUBIGEL ELECTROLUX, R134A, 1/4HP 230V

written by Jamila | 3 March 2022



PictureS Mbsm Dot Pro : www.mbsm.pro

Mbsm.pro, GL90TB, COMPRESSEUR ACC CUBIGEL ELECTROLUX, R134A, 1/4HP 230V

- Puissance en cheval 1/4 CV
- Alimentation 220-240 V 50 Hz
- Gaz R134a HMBP

- Cylindrée du compresseur 8,8 cm³
- Température d'utilisation max. 32°C
- Complet avec starter, condensateur, boîtier et système de fixation

La photo montre l'aspect du compresseur, pas son étiquette réelle



PictureS Mbsm Dot Pro : www.mbsm.pro

Codes fabricants

- ACC-GL90TB
- ALPENINOX-83718
- ANGELO P0-34D6510
- CEM-340
- CUBIGEL-GL90TB
- DEXION-022260-00
- ELECTROLUX-83718
- FRIULINOX-995783
- ICEMATIC-19165548
- MARENO-25016599
- MONDIAL ELITE-4106073
- MONDIAL ELITE-4106073+1147212
- NECTA VENDING-986934
- ZANUSSI-83718

Documentation technique du compresseur frigorifique
Cubigel *regarder en dessous*



PictureS Mbsm Dot Pro : www.mbsm.pro

**MBSM.PRO , Compressor,
Electrolux-Zem GL60AA R134A
,1/6 HP , 1PH , 220-240 V 50
Hz**

written by Jamila | 3 March 2022

MBSM.PRO , Compressor, Electrolux-Zem GL60AA R134A ,1/6 HP ,
1PH , 220-240 V 50 Hz



PictureS Mbsm Dot Pro : www.mbsm.pro

- Puissance en cheval 1/6 CV
- Cylindrée 5.99 cm³
- 220-240 V 50 Hz
- Gaz R134a LBP
- Température d'utilisation max. 32°C
- Avec boîtier et système de démarrage

La photo montre l'aspect du compresseur, pas son étiquette réelle

Codes fabricants

- ACC-GL60AA
- ACC-GL60AB
- ACC-GL60AH
- CUBIGEL-GL60AA
- CUBIGEL-GL60AB
- CUBIGEL-GL60AH
- MONDIAL ELITE-4106004
- MONDIAL ELITE-1147031
- Embraco Aspera- B1112Z





PictureS Mbsm Dot Pro : www.mbsm.pro



Mbsm_dot_pro_private_PDF_GL60AATélécharger
 Mbsm_dot_pro_private_PDF_-GL60AATélécharger



Type: Hermetic piston compressors **Producer: ACC** **Series: HMBP**
Model: GL60AA

General data

Refrigerant:	R134a
Discharge element:	C
Cooling:	S
Maximum ambient temperature [°C]:	43

Compressor's data

Cylinder capacity [cm ³]:	6
Displacement [m ³ /h]:	1
Weight [kg]:	9,1
Oil charge [cm ³]:	265

Oil type:	ISO VG 19 ESTER
-----------	-----------------

Engine's data

Engine type:	RSIR
Power [KM]:	1/6
Starting element:	LST
Power supply:	220V 50Hz
Voltage range:	187-264
Locked rotor current [A]:	9,9
Running winding resistance (25°C) [Ω]:	15,6
Starting winding resistance (25°C) [Ω]:	21,31

Electrical data

Relays:	3003
Shielding element:	MRA38028, T0508, AF18FU
Starting capacitor volume [μF]:	

Connections

	milimeters	inches
Suction tube:	6,5	
Service tube:	6,5	
Discharge tube:	4,9	

**Mbsm.pro , Compresseur
frigorifique, Embraco Aspera**

, T2178GK , 1Hp , PIÈCES FRIGO , 404A , 220-240 V 50 Hz

written by Jamila | 3 March 2022



Mbsm.pro , Compresseur frigorifique, Embraco Aspera , T2178GK ,
1Hp , PIÈCES FRIGO, 404A , 220-240 V 50 Hz



Mbsm_dot_pro_private_PDF_compresseur-embraco-aspera-
t2478gkTélécharger



Détails techniques

puissance 1 HP – cylindrée 20,40 cc

220/240V 50HZ

ASPERA

FRIULINOX

Friulinox Armoire réfrigérée AF12 -20, AF12 PA, AF12-14, AF12-14
VTR, AF12-14 VTRP, AF14, AF14 -22 SILVER VTR, AF6-1, AF6-7,
AF6-7 VTR, AF7, AF7 -20 VTR, AF7 -22 SILVER VTR, AF7 ICE, AF7
VTR, AF7-14, AG60 GOLD, AG60 H2O, AG60 SILVER, AG60 SILVERP,
AG60P, AL-EN SUPER, AL-EN1, AL-EN1 SUPER, AL-EN1P, AL-EN2, AL-
EN2 SUPER, AL-ENP, AP12-14, AP14, AP6, AP6-12, AP6-7, AP7,
AP7-14, AR12-14, AR12-14 VTR, AR14, AR6-12, AR6-12 VTR, AR6-7,
AR6-7 VTR, AR7, AR7-14, AR7-14 VTR, AR-EN GOLD, AR-EN SILVER,
AR-EN1, AR-EN1 GOLD, AR-EN1 VTR, AR-EN2, AR-ENP, ARF142,
ARF212 VTR, ARP142, ARP-EN1, ARP-EN2, ARRF21 VTR, EN GOLD, EN
P, EN SILVER, EN1, EN1 GOLD, EN1 H2O, EN1 H2O SILVER, EN1
SILVER, EN1 VTR, EN2, EN2 H2O

Friulinox Cellule de refroidissement ARP122

Friulinox Vitrine réfrigérée AFP122, AFP142, ARF122

ZANUSSI

ZanussiArmoireréfrigérée ALF110 (110071), ALNF220 (110073), ALF110 (110074), ALF120 (110075), ALNF220 (110079), ADN111 (110757), AKP110 (111000), AKS110 (111001), AKP120 (111002), AKN110 (111009), AKN120 (111010), AKP110UK (111121), AKN110UK (111123), AKNF220 (111127), AKF110UK (111129), AKF110 (111137), AKF120 (111138), ASF110 (112030), ASF110 (112032), AZP2203 (113228), AZP220360 (113229), ALN2203 (113231), AZP13430 (113234), AZF2203 (113236), AZF13430 (113237), MRF601/86 (726059), ETZ601 (726165), ETZ602 (726166), ESQC41F (726171), ESQC41FR (726172), ESQF41F (726173), ETE601 (726178), ETE602 (726179), ETE601L (726184), ETZ601L (726185), RS13RX2F (726321), RS13FX2F (726323), RS13DX2F (726335), RS13PX2F (726459), RS13PX2F6 (726461), RS13P42F (726462), RS13FX42F (726464), RS13DFX2F (726465), RS13R32F (726467), SB1300X2F (726468), RS13PW2F (726475), RS13FW2F (726476), MRF601/86 (726500), RS13FX2F6 (726688), EKZ601 (726890), EKZ602 (726891), EKE601 (726939), EKE602 (726940), EKE601L (726949), EKZ601L (726950), RS13RX2FG (726967), RS13FX2FG (726968), RS13P42F (727128), RS13FX42F (727129), RS13RX4H (727157), RS13FX4H (727158), KLP1300R (728059), KLP1300F (728060), RS13PX2FD (728063), E06C0M1V (728077), E06C1M1V (728078), E06C0D1V (728081), C06FD1G (728173), FGD36 (728271), RH06RD1G (728408), C06FD1G (728415), RS05RD1G (728433), E05N0D1C (728457), E05C0D1C (728458), E06N0D1C (728465), E06N0D2C (728466), E06N0D1V (728467), E06C0D1C (728468), E06C0D2C (728469), E06C0D1V (728470), E06N0D1C (728522), E06C0D1C (728523), KLN1300R (728605), KLP1300R (728606), KEP1300R (728607), KLP1300R (728608), KLP1300F (728609), KEP1300F (728610), KLP1300F (728611), EMVN500 (730005), DVP500V11C (730677), DVP501V11C (730678), DVP600V11C (730683), DVP601V11C (730684), DVP602V11C (730685), DVP600V12C (730686), DVP601V12C (730687), DVP602V12C (730688), DVN600V11C (730701), DVN601V11C (730702), DVN602V11C (730703), DVN600V12C (730704), DVN601V12C (730705), DVN602V12C (730706), DVN500V11C (730721), DVN501V11C (730722), MVP600V11C (730725), MVP601V11C (730726), MVP602V11C (730727), MVP600V12C (730728), MVP601V12C (730729), MVN600V11C (730741), MVN601V11C (730742), MVN600V12C (730743),

MVN601V12C (730744), DVP500V11C (730768), MVP501V11C (730769), MVP502V11C (730770), MVN500V11C (730780), MVN501V11C (730781), MLC601V11C (730938), MLC602V11C (730939), DVC500V11C (731242), DVC501V11C (731243), MVC502V11C (731244), DVC600 (731250), DVC601 (731251), MVC602 (731252), DVC600 (731255), DVC601 (731256), MVC600V11C (731282), MVC601V11C (731283), MVC600V12C (731284), MVC601V12C (731285), MVC500V11C (731294), MVC501V11C (731295), DVC602 (731302), DVC602 (731303), DVNN13022C (732073), DVNN13122C (732074), MVNN13022C (732079), MVNN13122C (732080), DVNC13022C (732095), EDVC13122C (732096), MVNC13022C (732103), MVNC13122C (732110), MLC600V11C (732251), MLC601V11C (732255), MLC602V11C (732257), DVP6VP12CC (734079), PDVN901V11C (737216), PDVN901V12C (737217), PDVN907V11C (737218), PDVN907V12C (737219), PDVC901V11C (737220), PDVN907V12C (737221), PDVC907V11C (737222), PDVC907V11C (737223), ILF120 (770508), RVPE061 (771100), RSPE061 (771101), RVPE062 (771102), RVNE061 (771108), RVNE062 (771109), KVPE662 (771115), RPPE061 (771155), ILF110 (771537), ZLNF220 (771539), RD13PX2F (790018), RD13FX2F (790019)

ZanussiCellulede refroidissement ESQC41F (691044), ESQC41FR (691045), ESQF41F (691046), ESQF41FR (691047), ESQF41FR (726144)

ZanussiCongélateurcoffre MRF4808660 (726042), MRF401/86 (726058), MRF240/86 (726060), MRF480/86 (726061)

ZanussiTableréfrigérée STRP1101 (113084), STRP1102 (113088), STRP1601 (113092), TRN224C (113102), TRN224D (113103), TRN224E (113104), STRP1602 (113105), STRP1603 (113106), STRP2201 (113107), STRP2202 (113108), STRP2203 (113109), STRP1101S (113128), STRP1601S (113129), STRP2201S (113130), STRP1602R (113131), TRN132A (113150), TRN132B (113151), TRN132C (113152), TRNA132A (113153), TRNA132B (113154), TRNA132C (113155), TRRN132A (113156), TRRN132B (113157), TRRN132C (113158), TRN183A (113159), TRN183B (113160), TRN183C (113161), TRN183D (113162), TRNA183A (113163), TRNA183B (113164), TRNA183C (113165), TRNA183D (113166), TRRN183A

(113167), TRRN183B (113168), TRRN183C (113169), TRRN183D
(113170), TRN22A4 (113171), TRN224B (113172), TRNA224A
(113173), TRNA224B (113174), TRRN224A (113175), TRRN224B
(113176), TRF132A (113177), TRFA132A (113178), TRRF132A
(113179), TRF183A (113180), TRFA183A (113181), TRRF183A
(113182), TRN132AE (113183), TRN183AE (113184), TRN224AE
(113185), TRF132AE (113186), TRF183AE (113187), STRP1603R
(113192), STRP2201R (113193), STRP2202R (113194), STRP2203R
(113195), STRP1101R (113196), STRP1102R (113197), STRP1601R
(113198), TCGS/1V7T (121856), TCGS/2V7T (121857), TCGS/1VC27
(121858), TCGS/2V2C7 (121859), TCGRS/1V7T (121866), TCGRS/2V7T
(121867), TCGRS/1VC2 (121868), TCGRS/2V2 (121869), TCGS2VC27T
(121905), RCSN2M2 (726139), RCSN2M12 (726140), RCSN3M3
(726141), RCSN3M22 (726145), RCSN3M14 (726146), RCSN4M4
(726147), RCSN4M32 (726148), RCSN4M24 (726170), RCSN2M2U
(726182), RCSN3M3U (726188), RCSN4M4U (726197), RCDR4M24
(726199), RCDR4M16 (726200), RCDR4M08 (726201), RCSN2M2R
(726202), RCSN2M12R (726203), RCSN3M3R (726210), RCSN3M22R
(726211), RCSN3M14R (726212), RCSN4M4R (726213), RCSN4M32R
(726220), RCSN4M24R (726221), RCDR2M20 (726408), RCDR2M12
(726409), RCDR2M20U (726410), RCDR2M12U (726411), RCDR2M04R
(726412), RCDR3M22 (726413), RCDR3M0U (726414), RCDR3M22U
(726415), RCDE4M40 (726416), RCDR4M32 (726417), RCDR4M40U
(726418), RCDR4M32U (726419), RCDFM20UX (726421), RCDF3M30U
(726422), RCER2M2 (726423), RCER3M3 (726424), RCER4M4
(726425), RCEF2M2X (726426), RCEF3M3 (726427), RCDR2M20
(726550), RCDR2M12 (726551), RCDR2M04 (726552), RCDR2M20U
(726553), RCDR2M12U (726554), RCDR2M04U (726555), RCDR2M20R
(726556), RCDR2M12R (726557), RCDR2M04R (726558), RCDR3M30
(726559), RCDR3M22 (726560), RCDR3M14 (726561), RCDR3M06
(726562), RCDR3M0U (726563), RCDR3M22U (726564), RCDR3M14U
(726565), RCDR3M06U (726566), RCDR3M30R (726567), RCDR3M22R
(726568), RCDR3M14R (726569), RCDR3M06R (726570), RCDR4M40
(726571), RCDR4M32 (726572), RCDR4M40U (726573), RCDR4M32U
(726574), RCDR4M40R (726575), RCDR4M32R (726576), RCDF2M20
(726577), RCDFM20U (726578), RCDF2M20R (726579), RCDF3M30
(726580), RCDF3M30U (726581), RCDF3M30R (726582), RCSER2M2

(726583), RCSER3M3 (726584), RCSER4M4 (726585), RCEF2M2 (726586), RCEF3M3 (726587), RCSN2M2T (726668), RCSN3M3T (726669), RCSN4M4T (726670), RCSER2M2U (726682), RCSER3M3U (726683), RCER4M4U (726684), RCEF2M2U (726685), RCEF3M3U (726686), RCSF2M24 (727009), RCSF3M34 (727010), HB2PNTR (727108), HB3PNTR (727109), HB4PNTR (727110), HB2P (728086), HB1P2C12 (728139), HB1P3C (728157), HB4C (728158), HB3P (728207), HB2P2C (728235), EDON590124 (728238), EDON590116 (728239), EDON590108 (728240), HB1P4C (728241), HB6C (728242), HB4P (728243), HB3P2C (728244), HB2P4C (728245), HB8C (728246), HB2PR (728247), HB1P2CR (728248), HB1P3CR (728254), HB4CR (728259), HB3PR (728264), HB2P2CR (728294), HB1P4CR (728295), HB6CR (728296), HB4PR (728297), HB3P2CR (728298), HB2P4CR (728299), HB8CR (728300), HB1P2C (728302), RCHBF1P2C (728304), RCHBF2P2C (728305), S02P200I (728352), S02P120I (728353), S04P300I (728354), S04P220I (728361), S04P140I (728362), S05P400I (728363), S05P320I (728364), E29N200I (728368), E29N120I (728369), E29N040I (728370), E29N200IA (728371), E29N120IA (728372), E29N040IA (728373), E29N200R (728374), E29N120R (728375), E29N040R (728376), E44N300I (728377), E44N220I (728378), E44N140I (728379), E44N060I (728380), E44N300IA (728381), E44N220IA (728382), E44N140IA (728383), E44N060IA (728384), E44N300R (728385), E44N220R (728386), E44N140R (728387), E44N060R (728388), E59N400I (728389), E59N320I (728390), E59N400IA (728391), E59N320IA (728392), E59N400R (728393), E59N310R (728394), E29C200I (728395), E29C200IA (728396), E29C200R (728397), E44C300I (728398), E44C300IA (728399), E44C300R (728400), S05P240I (728401), EDON2912SE (728492), EDON4413SE (728493), EDON5914SE (728494), EDOC2912SE (728495), EDOC4413SE (728496), HB2PU (728509), HB3PU (728510), HB4PU (728511), RCSF2M2 (728512), RCSF3M3 (728517), RCSF2M12 (728518), RCSF3M22 (728519), S04P220R (728536), S04P140R (728537), S05P400R (728538), S05P320R (728539), S05P240R (728540), HB1P2CRN (728552), HB1P3CRN (728554), HB4CRN (728556), HB2P2CRN (728558), HB1P4CRN (728560), HB6CRN (728562), HB3P2CRN (728564), HB2P4CRN (728566), HB8CRN (728568), HBF2PN (728569), HBF1P2CN

(728570), HBF3PN (728571), RCHBF2P2CN (728573), S02P200IA
(728585), S04P300IA (728586), S05P400IA (728587), S02P200R
(728588), S02P120R (728589), S04P300R (728590), RCHBF2P
(728635), RCHBF3P (728636)

...et d'autres dispositifs

– ALPENINOX

T2178GK – ASPERA

01AS0970 – ATEL – ELECTROLUX PROFESSIONAL

T2178GK – EMBRACO – FRIULINOX – INDESIT – UNIVERBAR –
WHIRLPOOL – ZANUSSI

...numéros de fabricant supplémentaires possibles