

**Mbsm.pro, Embraco, Aspera,  
NT2170U, compressor, LBP,  
R290,, 220 – 240V/1/50Hz, 1-  
HP,**

written by Lilianne | 4 May 2023

braco aspera

NT2170U



THERMALLY PROTECTED	
	R 290
POE. OIL 450CC	1 PH

220 - 240V ~ 50Hz

MADE IN SLOVAKIA NO START WITHOUT STARTING DEVICE



28AC4

KX

M10ZBW8J

Mbsm.pro, Embraco, Aspera, NT2170U, compressor, LBP, R290,,  
220 – 240V/1/50Hz, 1- HP,

---

**Mbsm.pro, Compressor,  
embraco, aspera, nj6226z,  
HBP-R134a, 220-240V/1/50Hz, 1  
HP++, displacement 34.38 cm<sup>3</sup>,  
LRA 31.0 A**

written by Lilianne | 4 May 2023



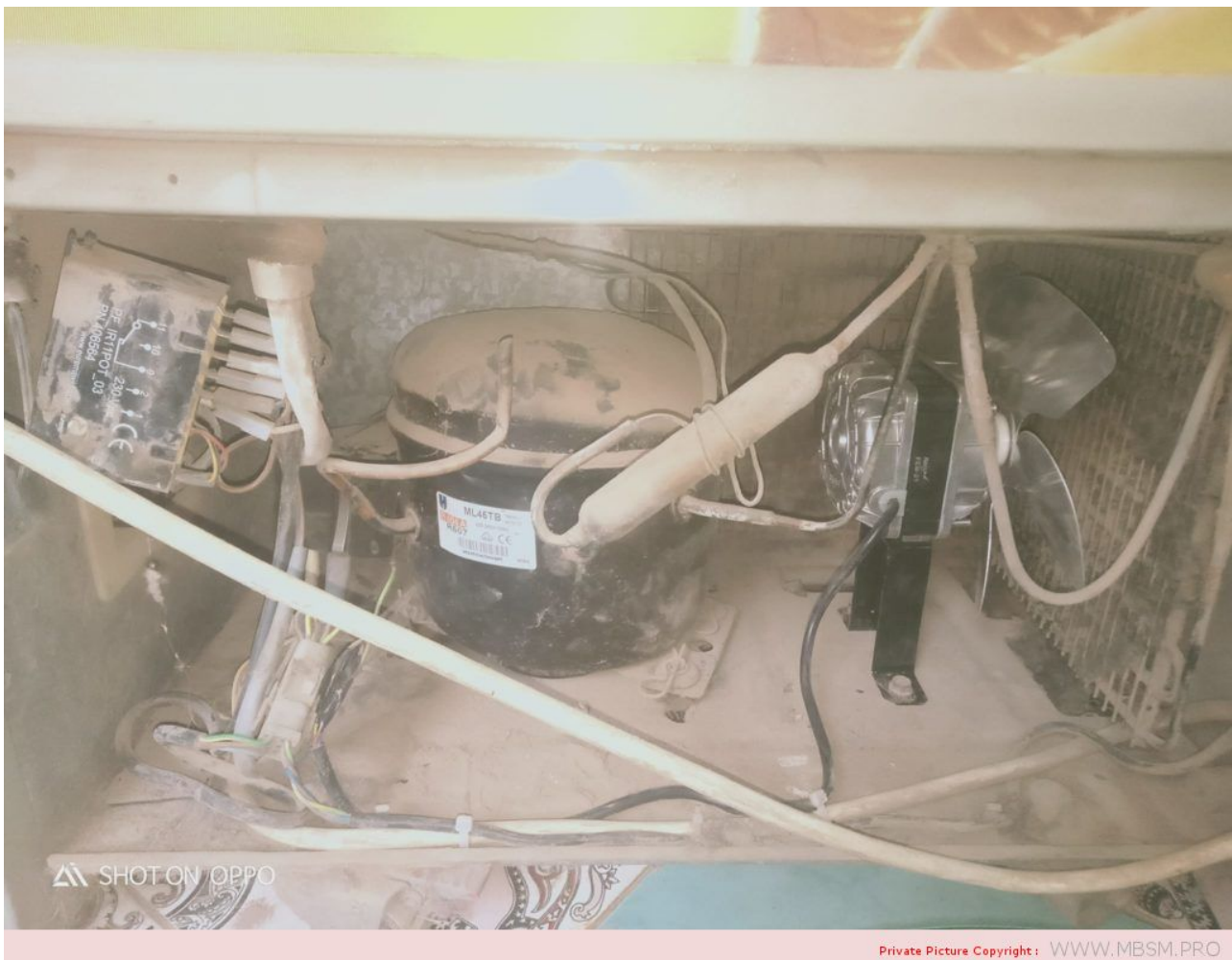
Private Picture Copyright: [WWW.MBSM.PRO](http://WWW.MBSM.PRO)

Mbsm.pro, Compressor, embraco, aspera, nj6226z, HBP-R134a,  
220-240V/1/50Hz, 1 HP++, displacement 34.38 cm<sup>3</sup>, LRA 31.0 A

---

# Mbsm.pro, Compressor, Cubigel, Huayi, Electrolux, ZEM, Freezer, ML45TB, HMBP, R404A, R507, 220 – 240V/1/50Hz, 1/5 HP, ++ Big, 1/4 Hp –, CSIR

written by Lilianne | 4 May 2023



Compressor ACC Cubigel Huayi Electrolux ZEM ML45TB, HMBP –  
R404A, R507, 220 – 240V/1/50Hz, 1/5 HP, discharge 4.5 cm<sup>3</sup>,  
motor type CSIR, oil type ISO VG46 ester, oil charge 300 cm<sup>3</sup>,  
528 W at +5 / +55 °, input power, current 352 W, 2.04A,  
expansion device: capillar or valve, cooling: fan, weight 10.1

kg

---

**Mbsm.pro, compressor,  
Cubigel, Huayi, LBP, R290,  
220 – 240V/1/50Hz, 1/3 hp,  
CSIR**

written by Lilianne | 4 May 2023

Mbsm.pro, compressor, Cubigel, Huayi, LBP, R290, 220 –  
240V/1/50Hz, 1/3 hp, CSIR

---

**Mbsm.pro, Compressor,  
Embraco, Aspera, NEK6214Z,  
HBP, R134a, 220 –  
240V/1/50Hz, 1/2 HP, CSIR,  
HBP, Big ++**

written by Lilianne | 4 May 2023



Mbsm.pro, Compressor, Embraco, Aspera, NEK6214Z, HBP, R134a, 220 – 240V/1/50Hz, 1/2 HP, CSIR, HBP, Big ++

---

**Mbsm.pro, Compressor,  
Embraco, Aspera, EMY26CLC,  
LBP, R600a, 220 –  
240V/1/50Hz, 1/12 HP, RSIR,  
LRA 7.8 A, 83 Wat**

written by Lilianne | 4 May 2023



Private Picture Copyright: [WWW.MBSM.PRO](http://WWW.MBSM.PRO)

Compressor, Embraco, Aspera, EMY26CLC, LBP, R600a, 220 – 240V/1/50Hz, 1/12 HP, RSIR, LRA 7.8 A, 83 Wat

---

**Compressor Embraco Aspera  
NEK6210GK, MBP – R404A, R507,  
220 – 240V/1/50Hz, 1/2 HP,  
discharge 8.77 cm<sup>3</sup>, motor**

**type CSIR, lubricant type POE 22, lubricant charge 350 ml.1318 W at +7.2 / +54.4 °, expansion device: capillary or valve, cooling: fan cooling, weight 11 kg**

written by Lilianne | 4 May 2023

**Compressor ASPERA NEK6210GK | NEK 6210 GK**

Compressor Embraco Aspera NEK6210GK, MBP – R404A, R507, 220 – 240V/1/50Hz, 1/2 HP, discharge 8.77 cm<sup>3</sup>, motor type CSIR, lubricant type POE 22, lubricant charge 350 ml.1318 W at +7.2 / +54.4 °, expansion device: capillary or valve, cooling: fan cooling, weight 11 kg

Refrigerant	R404A/R507
Working range[stC] <b>MBP</b>	-20 do +10
Nominal capacity [W] (evaporating temperature +7,2C, Condensing temperatur +54,4C)	1303
Power supply	220-240V 50Hz
Engine type	CSIR
Displacement [cm <sup>3</sup> ]	8,77
Weight [kg]	11

Evaporating temperature +55 C

Evaporating Temperature	Cooling Capacity +/-5%	Power Consumption +/-5%	Current Consumption +/-5%	Gas Flow Rate +/-5%	Efficiency +/-7%			
						(kg/h)	(kcal/Wh)	(W/W)
°C	(kcal/h)	(W)	(Btu/h)	(W)	(A)	(kg/h)	(kcal/Wh)	(W/W)
-20	384	447	1.525	365	2,36	11,99	1,05	1,22



-15	467	544	1.855	419	2,58	14,69	1,12	1,30
-10	574	668	2.278	470	2,79	18,18	1,22	1,42
-5	704	819	2.795	519	3,00	22,51	1,36	1,58
0	858	998	3.405	565	3,20	27,73	1,52	1,77
5	1.036	1.204	4.109	609	3,40	33,90	1,70	1,98
10	1.237	1.438	4.907	650	3,59	41,06	1,90	2,21

**Substitutes for this compressor are:** Electrolux ML90TB ,  
L'Unite Hermetique/Tecumseh AE4450Z

Refrigerant:	R404A, R507
--------------	-------------

Embraco aspera

NEK6210GK



THERMALLY PROTECTED

220 - 240V - 50Hz

R 404A

POE: OIL 350°C

1 PH

SUCTION

MADE IN SLOVAKIA NO START WITHOUT STARTING DEVICE



958CA51

LX

N10ZGP43

**Compressor ACC Cubigel Huayi  
Electrolux ZEM GP14FB, Low  
back pressure, 134a, 220  
-240V/1/50Hz, 3/8 HP ,CSIR**

written by Lilianne | 4 May 2023

Compressor ACC Cubigel Huayi Electrolux ZEM GP14FB, LBP –  
134a, 220 -240V/1/50Hz, 3/8 HP ,CSIR

---

**QB66C13GAX5 , KIRIAZI  
Electronic ,250L (Freezer  
capacity 64L), Panasonic  
Compressor , 1/5Hp ,165W ,Low  
back pressure, R134a,  
RSIR, 220-240V/1/50Hz**

written by Jamila | 4 May 2023



V41GX 8814

ME3489960

**QB66C13GAX5 R134a** (M)

220V ~ 50Hz 1PH

THERMALLY PROTECTED

Matsushita Electric Industrial Co., Ltd.

Manufactured by Panasonic Refrigeration

Devices Malaysia Sdn. Bhd.

Made in Malaysia

QB66C13GAX5 , KIRIAZI Electronic ,250L (Freezer capacity 64L),  
Panasonic Compressor , 1/5Hp ,165W ,Low back pressure,R134a,  
RSIR,220-240V/1/50Hz

---

**Compressor ,Embraco Aspera  
,NJ2212GK, LBP – R404A, R507,  
220-240V/1/50Hz, 1.5 HP,  
34.38 cm<sup>3</sup>, LRA 36.0 A, CSR,  
lubricant charge 750ml POE  
22, 1547 W ,at -23.3 / +54.4  
o**

written by Lilianne | 4 May 2023



Compressor ,Embraco Aspera ,NJ2212GK, LBP – R404A, R507,  
220-240V/1/50Hz, 1.5 HP, 34.38 cm<sup>3</sup>, LRA 36.0 A, CSR, lubricant  
charge 750ml POE 22, 1547 W ,at -23.3 / +54.4 °