

Mbsm.pro, Compressor, Hermetic, Tecumseh, AEZ9440T, R22, 1/3 hp++, MHBP

written by Lilianne | 3 January 2022

Basic Info.

Model N0.AEZ9440TLubrication StyleLubricatedCooling SystemAir
CoolingCylinder ArrangementBalanced Opposed
ArrangementCylinder PositionHorizontalStructure TypeClosed
TypeCompress LevelSingle-StageRefrigerant
TypeFreonTypeReciprocatingPerformanceLow NoiseDrive
ModeElectricPower SourceAC
PowerConfigurationStationaryMaterialCopperPiston
TypeClosedTrademarkTecumseh HermetiqueTransport
PackagePalletSpecificationCE / RoHsOriginChinaHS
Code8414301900

Product Description

Tecumseh Hermetique R134a / R404a/ R22 reciprocating
compressor

Hermetique R22 HBP								
For Air Conditioning Applications.								
Features:								
Anti Vibration mounts supplied								
Charged with mineral oil and dry nitrogen								
Crankcase heater on TAG models								

Fan cooling required on all models									
Specifications:									
Capacity Rating Basis: 35°C Ambient, 11K Return Gas Superheat, 54.5°C Condensing, 46.2°C Liquid entering Expansion Valve.									
Current FLA are given at nominal voltage, rated conditions and 7.2°C Evaporating Temperature.									
Motor Types:									
PSC = Permanent Split Capacitor, 1 Phase, 50 Hz. 220-240 Volt									
3Ø: 3 Phase, 50 Hz, 400 Volt									
Expansion Device:									
C = Capillary Tube									
C/V = Capillary Tube or Expansion Valve									
R22 Hermetic									
Model No.	Nominal HP	Displ. cm ³ /rev	Motor Type	Nominal Current FLA	Exp. Device	Oil Charge cm ³	Connections: inches		
cm ³	Discharge	Proc.							
AE 5465E	1/2	12.05	PSC	3.2	C	450	3/8 Tube	1/4 Tube	3/8 Tube
AJ 5510F	3/4	18.6	PSC	5.2	C	887	3/8 Tube	1/4 Tube	1/4 Tube
AJ 5512E	1	21.75	PSC	5.9	C	887	3/8 Tube	1/4 Tube	1/4 Tube
AJ 5513E	1	24.2	PSC	6	C	887	3/8 Tube	1/4 Tube	1/4 Tube
AJ 5515E	1 1/4	25.95	PSC	7.2	C	887	1/2 Tube	5/16 Tube	1/4 Tube
AJ 5518E	1 1/2	32.7	PSC	9.3	C	887	1/2 Tube	5/16 Tube	1/4 Tube
AJ 5519E	1 1/2	34.45	PSC	9.96	C	887	1/2 Tube	5/16 Tube	1/4 Tube

FH 5522E	1 3/4	39.95	PSC	9	C	1330	5/8 Tube	3/8 Tube	5/16 Tube
TFH 5522E	1 3/4	39.95	3Ø	3.8	C/V	1330	5/8 Tube	3/8 Tube	5/16 Tube
FH 5524E	2	43.5	PSC	10	C	1330	5/8 Tube	3/8 Tube	5/16 Tube
TFH 5524E	2	43.5	3Ø	4	C/V	1330	5/8 Tube	3/8 Tube	5/16 Tube
FH 5527E	2 1/4	49.1	PSC	12	C	1330	5/8 Tube	3/8 Tube	5/16 Tube
TFH 5527E	2 1/4	49.1	3Ø	4.2	C/V	1330	5/8 Tube	3/8 Tube	5/16 Tube
FH 5531E	2 1/2	56.65	PSC	14.1	C	1330	3/4 Tube	3/8 Tube	5/16 Tube
TFH 5531E	2 1/2	56.65	3Ø	8	C/V	1330	3/4 Tube	3/8 Tube	5/16 Tube
FH5540E	3	74.25	PSC	18.6	C	1330	3/4 Tube	3/8 Tube	5/16 Tube
TFH 5540E	3	74.25	3Ø	6	C/V	1330	3/4 Tube	3/8 Tube	5/16 Tube
TFH 5540E	3	74.25	3Ø	6	C/V	1330	78	1/2 Valve	5/16 Tube
TAG 5546E	3 3/4	90.2	3Ø	6.6	C/V	1960	7/8 Tube	1/2 Tube	3/8 Tube
TAG 5553E	4	100.7	3Ø	7.4	C/V	1960	7/8 Tube	1/2 Tube	3/8 Tube
TAG 5561E	5	112.5	3Ø	9	C/V	1960	7/8 Tube	1/2 Tube	3/8 Tube
TAG 5568E	6	124.4	3Ø	9.6	C/V	1960	7/8 Tube	1/2 Tube	3/8 Tube
TAG 5573E	6 1/2	134.8	3Ø	11	C/V	1960	7/8 Tube	1/2 Tube	3/8 Tube
Hermetique R22 M/HBP									
For Medium / High Temperature Applications									
Features:									
Anti-Vibration mounts supplied									
Charged with mineral oil and dry nitrogen									
Rotalock suction valve on CAJ/TAJ models									
Crankcase heater on FH/TFH and TAG models									
Oil sight glass on FH/TFH and TAG models									

Fan cooling required on all models								
All models suit capillary tube or expansion valve operation								
Rotalock suction and discharge valves on FH/TFH and TAG models								
Specifications:								
Capacity Rating Basis: 35°C Ambient, 11K Return Gas Superheat, 54.5°C Condensing, 46°C Liquid entering Expansion Valve.								
Current FLA are given at nominal voltage, rated conditions and 7.2°C evaporating temperature.								
Motor Types:								
CSIR: Capacitor start, Induction run } 1 Phase, 50 Hz, 220-240 Volt								
CSR: Capacitor start and run								
3Ø: 3 Phase, 50 Hz, 400 Volt								
Conversion: Watts x 3.412 = BTU/Hr BTU/Hr x 0.293 = Watts								
R22 Hermetic								
Model No.	Nominal HP	Displ. cm ³ /rev	Motor Type	Nominal Current FLA	Oil Charge cm ³	Connections: inches		
Suction	Discharge							
AEZ 4425E	1/5	4.5	CSIR	1.75	450	1/4 Tube	3/16 Tube	
AEZ 4430E	1/4	5.7	CSIR	2.2	450	1/4 Tube	3/16 Tube	
AEZ 4440E	1/3	7.55	CSIR	2.6	450	1/4 Tube	3/16 Tube	
AEZ 9440T	1/3	7.55	CSR	2.03	450	3/8 Tube	1/4 Tube	
CAE 4450E	3/8	9.4	CSIR	3.3	450	3/8 Tube	1/4 Tube	

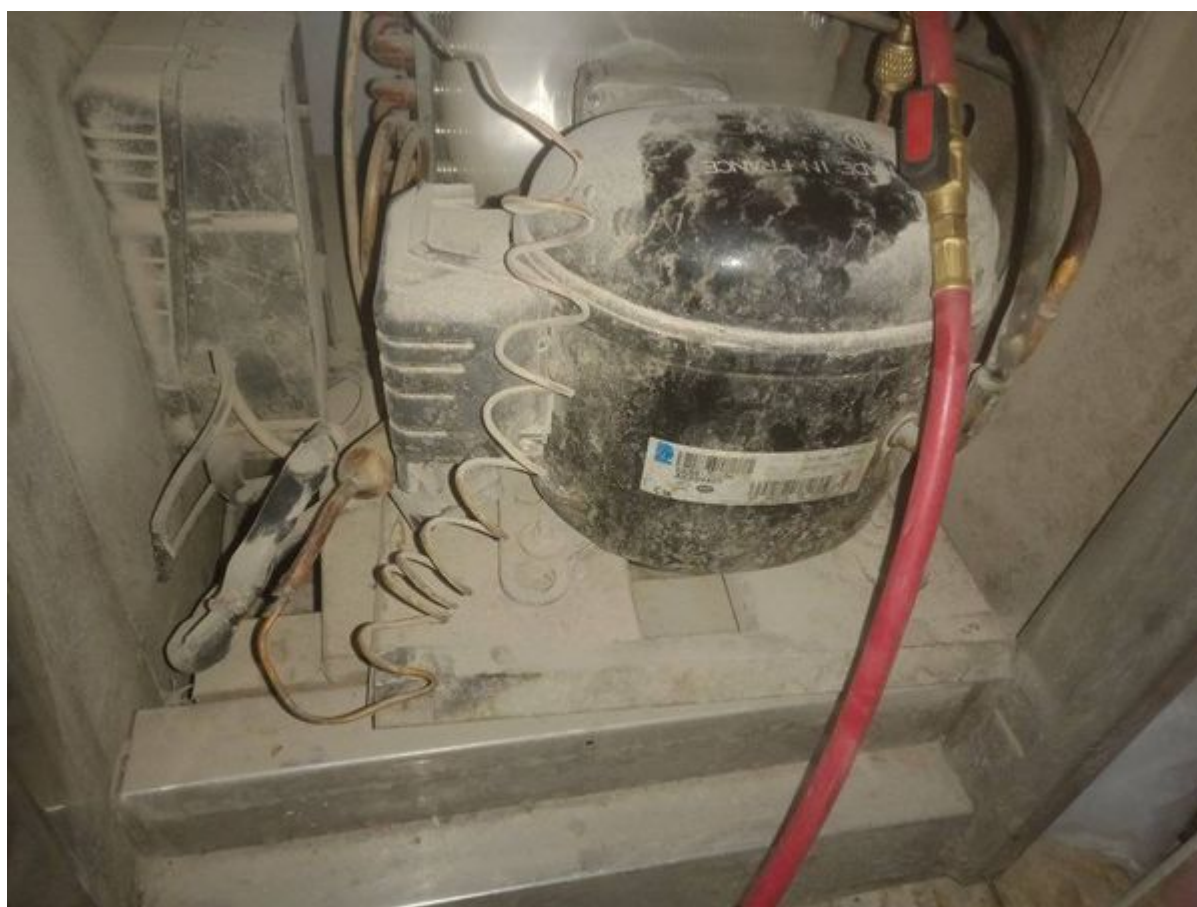
CAE 9450T	3/8	9.5	CSR	2.6	450	3/8 Tube	1/4 Tube		
CAE 9460T	1/2	11.3	CSR	3.2	450	3/8 Tube	1/4 Tube		
CAJ 9408T	5/8	15.2	CSR	3.68	887	1/2 Valve	5/16 Tube		
CAJ 9510T	1	18.3	CSR	4.8	887	5/8 Valve	5/16 Tube		
CAJ 9513T	1 1/8	24.2	CSR	5.9	887	5/8 Valve	5/16 Tube		
CAJ 4517E	1 1/4	25.95	CSR	6.1	887	5/8 Valve	3/8 Tube		
TAJ 4517T	1 1/2	25.95	3Ø	2.5	887	5/8 Valve	3/8 Tube		
TAJ 4519T	1 1/2	34.45	3Ø	3.5	887	5/8 Valve	1/2 Valve		
FH 4524F	2	43.5	CSR	9.55	1480	5/8 Valve	1/2 Valve		
TFH 4524F	2	4.35	3Ø	3.9	1480	7/8 Valve	1/2 Valve		
FH 4531F	2 1/2	56.65	CSR	12.6	1480	7/8 Valve	1/2 Valve		
TFH4531F	2 1/2	56.65	3Ø	4.75	1480	7/8 Valve	1/2 Valve		
TFH 4540F	3	74.25	3Ø	6.08	1480	7/8 Valve	1/2 Valve		
TAG 4546T	4	90.2	3Ø	6.6	1960	7/8 Valve	5/8 Valve		
TAG 4553T	4 1/2	100.7	3Ø	7.4	1960	7/8 Valve	5/8 Valve		
TAG 4561T	5	112.5	3Ø	9	1960	1 7/8 Valve	5/8 Valve		
TAG 4568T	6	124.4	3Ø	9.6	1960	1 7/8 Valve	5/8 Valve		
TAG 4573T	6 1/2	134.8	3Ø	11	1960	1 7/8 Valve	5/8 Valve		
Tecumseh Hermetique R134a									
The world renowned L'Unite Hermetique compressors are manufactured by Tecumseh.									
Features:									
Charged with polyolester oil and dry nitrogen									
Crankcase heater on FH/TFH and TAG models									
Oil sight glass on FH/TFH and TAG models									
Rotalock valves are included for all valve connection compressors									
Anti-vibration mounts supplied									
Single Phase – Medium High SST									
Model No.	Nominal HP	Displacement: cm3/rev	Cooling	Oil Charge: ml					

CAJ4476Y	5/8	21.75	Fan	887					
CAJ4492Y	3/9	25.95	Fan	887					
CAJ4511Y	1	32.7	Fan	887					
FH4518Y	1 1/2	53.2	Fan	1480					
FH4525Y	2	74.25	Fan	1480					
Three Phase – Medium High SST									
Model No.	Nominal HP	Displacement: cm3/rev	Cooling	Oil Charge: ml					
TAJ4511Y	1	32.7	Fan	887					
TFH4518Y	1 1/2	53.2	Fan	1480					
TFH4525Y	2	74.25	Fan	1480					
TAG4528Y	2 1/2	90.2	Fan	1960					
TAG4534Y	2 3/4	100.7	Fan	1960					
TAG4537Y	3	112.5	Fan	1960					
TAG4543Y	3 1/2	124.4	Fan	1960					
Superceded Models									
Model No.	Nominal HP	Displacement: cm3/rev	Cooling	Oil Charge: ml					
AEZ4425Y	1/5	7.55	Fan	450					
AEZ4430Y	1/4	8.85	Fan	450					
CAE4440Y	3/8	12.05	Fan	450					
CAE4448Y	1/3	14.15	Fan	450					
CAJ4452Y	1/3	15.2	Fan	887					
CAE4456Y	1/2	16	Fan	450					
CAJ4461Y	1/2	18.3	Fan	887					
Tecumseh Hermetique R404A									
The world renowned L'Unite Hermetique compressors are manufactured by Tecumseh.									
Features:									
Charged with polyolester oil and dry nitrogen									
Crankcase heater on FH/TFH and TAG models									

Oil sight glass on FH/TFH and TAG models									
Rotalock valves are included for all valve connection compressors									
Anti-vibration mounts supplied									
Specifications:									
Capacity Rating Basis: 35°C Ambient, 11K Return Gas Superheat, 54.5°C Condensing, 46°C Liquid entering Expansion Valve.									
Current FLA are given at nominal voltage, rated conditions and 7.2°C Evaporating Temperature.									
Motor Types:									
CSIR: Capacitor Start, Induction Run 1 Phase, 50 Hz, 220-240 Volt									
CSR: Capacitor Start and Run									
3Ø: 3 Phase, 50 Hz, 400 Volt									
All models are also suitable for operation with R507									
Single Phase – Medium High SST									
Model No.	Nominal HP	Displacement: cm3/rev	Cooling	Oil Charge: ml					
CAJ9480Z	5/8	15.2	Fan	887					
CAJ9510Z	1	18.3	Fan	887					
CAJ9513Z	1 1/8	24.2	Fan	887					
CAJ4517Z	1 1/4	25.95	Fan	887					
CAJ4519Z	1 1/2	34.45	Fan	887					
FH4522Z	1 3/4	39.95	Fan	1480					
FH4524Z	2	43.5	Fan	1480					

MEDIUM/HIGH BAK PRESSURE COMPRESSORS

Type	COMPRESSOR MODELS	Nominal Power (H.P.)			REFRIGERATION CAPACITY AT 50HZ Rafed 54.5°C Cond Temp (Watts)						VOLTAGE	
			Refrigerant	Displacement (cm ³)	Evaporating Temperature							
					Oil charge (cm3)	-25°C	-15°C	-10°C	0°C	+7.2°C		+15°C
PISTON	AEZ4425E	1/5	R22	4.50	250	138	192	258	413	553	728	220-240V/1/50Hz
	AEZ4430E	1/4	R22	5.70	250	192	255	336	538	718	945	220-240V/1/50Hz
	AEZ3440E	1/3	R22	7.55	350	308	362	464	733	980	1298	220-240V/1/50Hz
	AEZ4440E	1/3	R22	7.55	350	308	362	464	733	980	1298	220-240V/1/50Hz
	AEZ9440T	1/3	R22	7.55	350	222	362	464	733	975	1302	220-240V/1/50Hz
	CAE4450E	3/7	R22	9.40	350	355	426	554	896	1212	1623	220-240V/1/50Hz
	CAE9450T	3/7	R22	9.40	350	256	426	554	896	1212	1623	220-240V/1/50Hz
	CAE9460T	1/2	R22	11.30	350	324	553	715	1134	1514	2000	220-240V/1/50Hz
	CAJ9480T TAJ9480T	5/8	R22	15.20	887	461	786	1011	1586	2103	2761	220-240V/1/50Hz 400V/3/50Hz
	CAJ9510T TAJ9510T	1	R22	18.30	887	545	956	1229	1909	2510	3266	220-240V/1/50Hz 400V/3/50Hz
	CAJ9513T TAJ9513T	1-1/8	R22	24.20	887	526	1074	1451	2411	3272	4366	220-240V/1/50Hz 400V/3/50Hz
	CAJ4517E TAJ4517T	1-3/4	R22	25.95	887	771	1233	1673	2727	3629	4743	220-240V/1/50Hz 400V/3/50Hz



Private Picture Copyright : WWW.MBSM.PRO



Private Picture Copyright : WWW.MBSM.PRO

Mbsm_dot_pro_private_PDF_AEZ9440TTélécharger