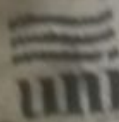


**ZEL , Refrigeration  
, Compressor , Gm1200a , 152w ,  
1/5 Hp , 220/240V/50Hz , R134a**

written by Lilianne | 27 April 2020

MADE IN EGYPT



unionaire<sup>®</sup>

SPECIFICATIONS

MODEL	RD 310
REFRIGERANT/AMOUNT	R134a / 100g
RATED INPUT OF LAMP	15 W
RATED VOLTAGE	220-240V~
RATED CURRENT	1.1A
RATED FREQUENCY	50HZ
CLIMATE CLASS	T
POWER INPUT	130 W
GROSS VOLUME	310 L
CAPACITY (NET)	290 L
GROSS VOLUME cabinet	227
Net volume cabinet	210
PRODUCTION DATE	JULY/2108

Private Picture Copyright : [WWW.MBSM.PRO](http://WWW.MBSM.PRO)

ZEL , Refrigeration , Compressor , Gml200a , 152w , 1/5 Hp , 220/240V/50Hz , R134a

---

**HERMETIC , AW5524EK  
, Compressor , 20,950 BTU  
, 230/1/60 R-22 , : 220-240  
V/50 Hz. , 1 Phase ,  
1.7458333333 TON**

written by Lilianne | 27 April 2020

Electrical : 220-240 V/50 Hz. 1 Phase

Nominal Performance

Capacity 6,140 / – Watts

20,950 / – BTU/Hr

5,280 / – Kcal/Hr

Power Input 2,089 / – Watts

Locked Rotor Amps 51.30 / – Amps

Max Continuous Current – / – Amps

Rated Load Amps 9.64 / – Amps

COP 2.94 / – Watts / Watts

EER 10.03 / – BTU/W-Hr

Testing Conditions

Condensing Temperature 54.40 °C 129.9 °F

Evaporating Temperature 7.20 / – °C 45.0 / – °F

Liquid Temperature 46.10 °C 115.0 °F

Return Gas Temperature 35.00 °C 95.0 °F

Ambient Temperature 35.00 °C 95.0 °F

Application

Evaporating Temp. Range HBP, A/C @ 0.00 ° C to 13.00 ° C  
(32.0° F to 55.4° F)

Heat Pump -23.30 ° C to 13.00 ° C  
(-9.9° F to 55.4° F)

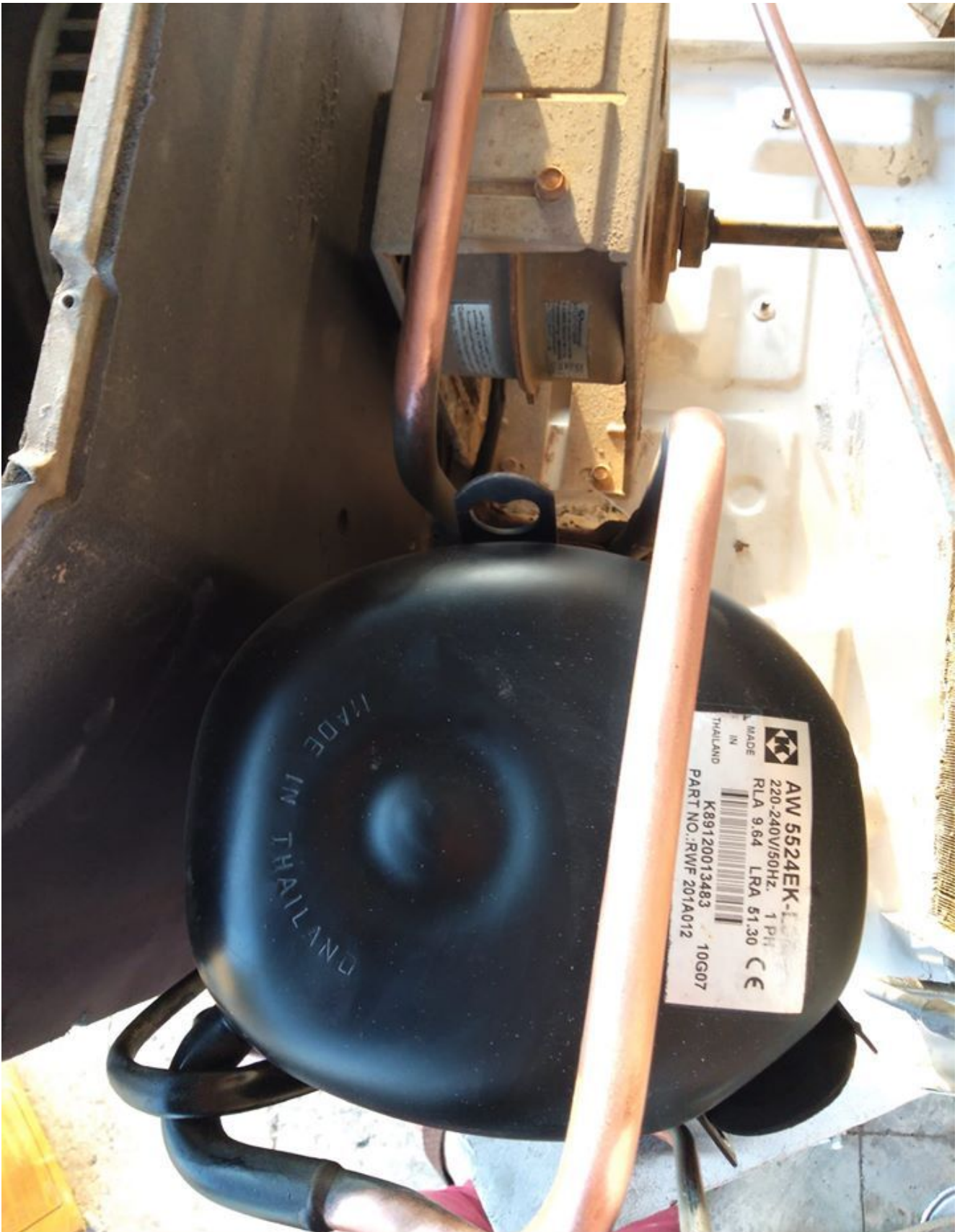
Refrigerant R22

Refrigerant Flow Control Capillary Tube  
Compressor Cooling Fan  
Compressor and Motor data  
Compressor Type Reciprocating  
Displacement 43.10 cc.  
Oil Type Mineral Oil  
Oil Charge 964 cc.  
Motor Type P.S.C ; 2 Pole 2,850 / – r/m  
Voltage Range 198-264/- Volts 50/- Hz.  
Winding Resistance at 25 ° C  
Start 2.52 Ohms  
Run 1.24 Ohms  
Weight with Oil 27.72 Kg.  
Weight with Oil and Accessories 28.05 Kg.  
Electrical Components  
Motor Protector  
Type Internal Overload  
Model Number 4042KGE661-2  
Open / Close 125-135 / 50-70 ° C  
1st Cycle trip at 25 ° C 50.00 Amps(main) 30.00 Amps(start)  
Motor Starter  
Type Potential Relay  
Model Number 4043KGE681-4(RVA3G6D)  
Pick Up (max.) 180.00-195.00 Volts  
Drop Out (min.) 40.00-90.00 Volts  
Terminal Cover KGM 901-3  
Start Capacitor 88-106 µF 330 VAC.  
Disch Resistor for Start Cap –  
Run Capacitor 45 µF 370/440 VAC.  
Mounting Kit  
Rubber Grommet 4007KGM905-2  
Sleeve Grommet 4023KGM903-2  
Washer –

Since we are constantly improving our product , the  
specification are subject to change without notice.

REV. DATE C / N No.

ECN 01-04-14 ECN 0515/13





DOCUMENTATION PDF

Mbsm\_dot\_pro\_private\_pictureAW5524EKTélécharger

---

# **Compresseurs Embraco, , EMU70HLC , R134a, 220 V, 50Hz, 1/5 HP, 149 watts , 180 mL**

written by Lilianne | 27 April 2020

Compresseurs Embraco, , EMU70HLC , R134a, 220 V, 50Hz, 1/5 HP,  
149 watts , 0.17 kW (0.2214 BHP) , 180 mL

---

# **Austria , RECIPROCATING**

**, COMPRESSOR , SECOP , HXD30AA  
, 0.04 1/25 HP , R600a , 220v  
50Hz**

written by Lilianne | 27 April 2020

Austria , RECIPROCATING , COMPRESSOR , SECOP , 0.04 HP , HXD30AA ,  
1/25 HP , R600a , 220v 50Hz

---

**HUAYI , COMPRESSOR , HYE55YL63  
, 1/6 Hp , 129Kcal , R134a,  
220V , LBP**

written by Lilianne | 27 April 2020

HUAYI , COMPRESSOR , HYE55YL63 , 1/6 Hp , 129Kcal , R134a, 220V  
, LBP

---

**COMPRESSOR , EMBRACO , FF6BK  
, 1/5 HP, 115V , R12 , LBP ,  
635 BTU , Manufactured by ,**

# Tecumseh

written by Lilianne | 27 April 2020

COMPRESSOR , EMBRACO , FF6BK , 1/5 HP, 115V , R12 , LBP , 650  
BTU , Manufactured by , Tecumseh

---

**NL8.4FT , Tropical , 1/4 Hp  
Compressor R134a 220-240V  
50Hz , HERMETIC , 143 W -25/+55  
°C , LBP, 105g6866, 105g6865**

written by Lilianne | 27 April 2020

NL8.4FT , Tropical , 1/4 Hp Compressor R134a 220-240V 50Hz  
, HERMETIC , 143 W -25/+55 °C , LBP

---

**Compressor Danfoss SC12CL 3/8  
HP , LBP/MBP, R404A/R507**

written by Lilianne | 27 April 2020

Compressor Danfoss SC12CL 3/8 HP , LBP/MBP, R404A/R507

---



**3/8 HP, using R134a, LBP  
Wanbao Compressor , Marlboro,  
ANA120 , 340W**

written by Lilianne | 27 April 2020

3/8 HP, using R134a, LBP Wanbao Compressor , Marlboro, ANA120  
, 340W

---

**Compressor Bpm111z , r134a  
1/6hp , 5.6cc, 240v 50hz  
, ASPERA, EMBRACO**

written by Lilianne | 27 April 2020



Picture5 Mbsm Dot Pro : [www.mbsm.pro](http://www.mbsm.pro)

Compressor Bpm111z , r134a 1/6hp ,5.6cc, 240v 50hz ,ASPERA, EMBRACO