

**COMPRESSOR, EMBRACO ,  
fgs130ha, LBP (Low Back  
Pressure) ,RSCR ,316 W ,1/3+  
HP ,220-240 V 50 Hz ,1080  
Btu/h ,11,14 c.c.,R134a**

written by Lilianne | 30 April 2020



**Embraco** FGS130HAW



THERMALLY PROTECTED

10 LRA

R 134a

1 PH

**220-240V~**

**50Hz**

JOINVILLE-SC NO START WITHOUT STARTING DEVICE  
MADE IN BRAZIL



513200607 FAB 1 26/JAN/05 E05DDHWA

**HFC - 134a**

△ 注意

△ 高温注意

<b>Compressore</b>	EMBRACO
<b>Modello</b>	FGS130HAW
<b>Altezza (mm)</b>	
<b>Gas</b>	R134a
<b>Tensione</b>	220-240 V 50 Hz
<b>Applicazione</b>	LBP (Low Back Pressure)
<b>Test Condition</b>	ASHRAE LBP 32
<b>Cilindrata</b>	11,14 c.c.
<b>Motore</b>	RSCR
<b>Potenza (HP)</b>	1/3+
<b>Cap. Frigor. Watt</b>	316
<b>Cap. Frigor. Kcal</b>	272
<b>Cap. Frigor. Btu/h</b>	1080
<b>COP (W/W)</b>	1,49
<b>Watt assorbiti (W)</b>	
<b>Dispositivo di Avv.</b>	
<b>Condensatore</b>	
<b>Tipo Raffreddamento</b>	
<b>Imballo (Pcs/Pallet)</b>	

---

**Fn91q20g , 1/4Hp ,  
Electrostar , R12  
Refrigerator Compressors ,**

# **220V/50-60Hz , 1Phase ,for Refrigerator/Freezer**

written by Lilianne | 30 April 2020

Fn91q20g , 1/4Hp , Electrostarc , R12 Refrigerator Compressors , 220V/50-60Hz , 1Phase ,for Refrigerator/Freezer

---

# **Panasonic ,Compressor ,R134a ,QB series , QB66C13GPX5 , 1/5 HP ,1Phase , 165 w , RSIR, PTC relay ,220V 50Hz**

written by Lilianne | 30 April 2020

Panasonic ,Compressor ,R134a ,QB series , QB66C13GPX5 , 1/5 HP ,1Phase , 165 w , RSIR, PTC relay ,220V 50Hz

---

# **230V ,compressor, Danfoss ,SC15MFX , made by Secop, R134a ,refrigeration, CSIR ,**

# **Moteur HP , R134a ,3 / 8HP ,HMBP ,1PH**

written by Lilianne | 30 April 2020

230V ,compressor, Danfoss ,SC15MFX , made by Secop, R134a  
,refrigeration, CSIR , Moteur HP , R134a ,3 / 8HP ,HMBP ,1PH

---

# **Danfoss ,Fridge Compressor ,NL7FT , 1/4 HP ,R134a**

written by Lilianne | 30 April 2020

Danfoss ,Fridge Compressor ,NL7FT , 1/4 HP ,R134a

---

# **Compressor ELECTROLUX, CUBIGEL ,GP12TB ,Hermetic piston ,ACC ,HMBP , moteur HP , 3/8 HP++, 1/2 hp- , 1PH , R134A , Pression 1.7 Bar , 220V**

written by Lilianne | 30 April 2020

	<b>Model</b>	<b>Refr.</b>	<b>HP</b>
▶ <input type="checkbox"/>	<b><u>GL45PB</u></b>	HMBP::R134a	1/6
▶ <input type="checkbox"/>	<b><u>GL45PB</u></b>	HMBP::R134a	1/6
▶ <input type="checkbox"/>	<b><u>GL45TB</u></b>	HMBP::R134a	1/6
▶ <input type="checkbox"/>	<b><u>GL60PB</u></b>	HMBP::R134a	1/5
▶ <input type="checkbox"/>	<b><u>GL60TB</u></b>	HMBP::R134a	1/5
▶ <input type="checkbox"/>	<b><u>GL80PB</u></b>	HMBP::R134a	1/5
▶ <input type="checkbox"/>	<b><u>GL80TB</u></b>	HMBP::R134a	F
▶ <input type="checkbox"/>	<b><u>GL90TB</u></b>	HMBP::R134a	1/4
▶ <input type="checkbox"/>	<b><u>GP12TB</u></b>	HMBP::R134a	3/8

PictureS Mbsm Dot Pro : [www.mbsm.pro](http://www.mbsm.pro)

Private Picture Copyright : [WWW.MBSM.PRO](http://WWW.MBSM.PRO)

Compressor ELECTROLUX, CUBIGEL GP12TB ,Hermetic piston ,ACC ,HMBP , moteur HP , 3/8 HP , 1PH , R134A , Pression 1.7 Bar

# **QBH57C10GPX, 1/6HP ,RSIR, Reciprocating Fixed Speed, Compressors, R134a, LBP ,PANASONIC SMALL REFRIGERATOR**

written by Lilianne | 30 April 2020

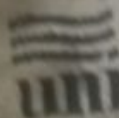
QBH57C10GPX, 1/6HP ,RSIR, Reciprocating Fixed Speed,  
Compressors, R134a, LBP ,PANASONIC SMALL REFRIGERATOR

---

# **ZEL , Refrigeration , Compressor ,GmL200a ,152w , 1/5 Hp ,220/240V/50Hz ,R134a**

written by Lilianne | 30 April 2020

**MADE IN EGYPT**



**unionaire<sup>SM</sup> SPECIFICATIONS**

<b>MODEL</b>	<b>RD 310</b>
<b>REFRIGERANT/AMOUNT</b>	<b>R134a / 100g</b>
<b>RATED INPUT OF LAMP</b>	<b>15 W</b>
<b>RATED VOLTAGE</b>	<b>220-240V~</b>
<b>RATED CURRENT</b>	<b>1.1A</b>
<b>RATED FREQUENCY</b>	<b>50HZ</b>
<b>CLIMATE CLASS</b>	<b>T</b>
<b>POWER INPUT</b>	<b>130 W</b>
<b>GROSS VOLUME</b>	<b>310 L</b>
<b>CAPACITY (NET)</b>	<b>290 L</b>
<b>GROSS VOLUME cabinet</b>	<b>227</b>
<b>Net volume cabinet</b>	<b>210</b>
<b>PRODUCTION DATE</b>	<b>JULY/2108</b>

Private Picture Copyright : [WWW.MBSM.PRO](http://WWW.MBSM.PRO)

ZEL , Refrigeration , Compressor , Gml200a , 152w , 1/5 Hp , 220/240V/50Hz , R134a



---

**HERMETIC , AW5524EK  
, Compressor , 20,950 BTU  
, 230/1/60 R-22 , : 220-240  
V/50 Hz. , 1 Phase ,  
1.7458333333 TON**

written by Lilianne | 30 April 2020

Electrical : 220-240 V/50 Hz. 1 Phase

Nominal Performance

Capacity 6,140 / – Watts

20,950 / – BTU/Hr

5,280 / – Kcal/Hr

Power Input 2,089 / – Watts

Locked Rotor Amps 51.30 / – Amps

Max Continuous Current – / – Amps

Rated Load Amps 9.64 / – Amps

COP 2.94 / – Watts / Watts

EER 10.03 / – BTU/W-Hr

Testing Conditions

Condensing Temperature 54.40 °C 129.9 °F

Evaporating Temperature 7.20 / – °C 45.0 / – °F

Liquid Temperature 46.10 °C 115.0 °F

Return Gas Temperature 35.00 °C 95.0 °F

Ambient Temperature 35.00 °C 95.0 °F

Application

Evaporating Temp. Range HBP, A/C @ 0.00 ° C to 13.00 ° C  
(32.0° F to 55.4° F)

Heat Pump -23.30 ° C to 13.00 ° C  
(-9.9° F to 55.4° F)

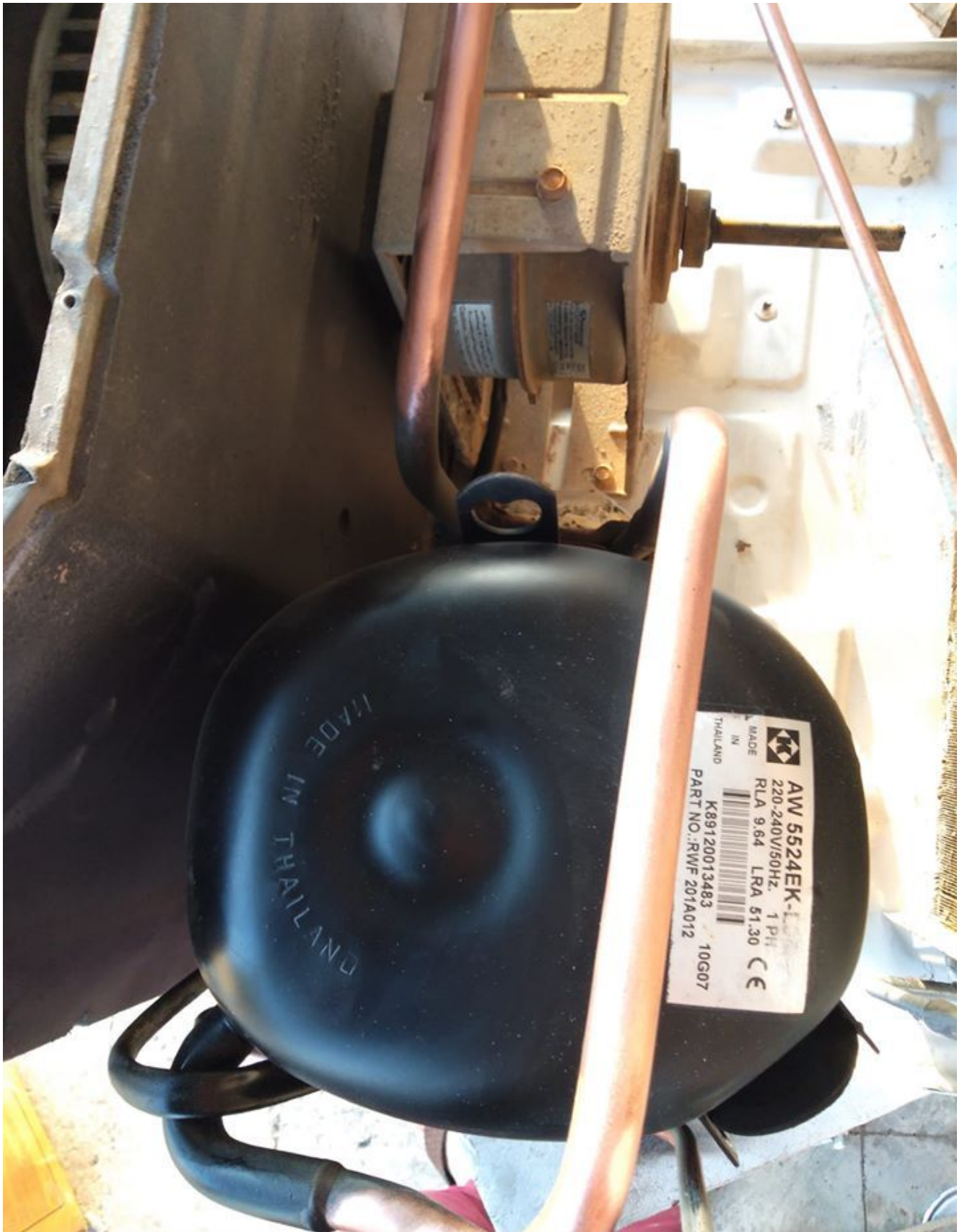
Refrigerant R22

Refrigerant Flow Control Capillary Tube  
Compressor Cooling Fan  
Compressor and Motor data  
Compressor Type Reciprocating  
Displacement 43.10 cc.  
Oil Type Mineral Oil  
Oil Charge 964 cc.  
Motor Type P.S.C ; 2 Pole 2,850 / – r/m  
Voltage Range 198-264/- Volts 50/- Hz.  
Winding Resistance at 25 ° C  
Start 2.52 Ohms  
Run 1.24 Ohms  
Weight with Oil 27.72 Kg.  
Weight with Oil and Accessories 28.05 Kg.  
Electrical Components  
Motor Protector  
Type Internal Overload  
Model Number 4042KGE661-2  
Open / Close 125-135 / 50-70 ° C  
1st Cycle trip at 25 ° C 50.00 Amps(main) 30.00 Amps(start)  
Motor Starter  
Type Potential Relay  
Model Number 4043KGE681-4(RVA3G6D)  
Pick Up (max.) 180.00-195.00 Volts  
Drop Out (min.) 40.00-90.00 Volts  
Terminal Cover KGM 901-3  
Start Capacitor 88-106 µF 330 VAC.  
Disch Resistor for Start Cap –  
Run Capacitor 45 µF 370/440 VAC.  
Mounting Kit  
Rubber Grommet 4007KGM905-2  
Sleeve Grommet 4023KGM903-2  
Washer –

Since we are constantly improving our product , the  
specification are subject to change without notice.

REV. DATE C / N No.

ECN 01-04-14 ECN 0515/13





DOCUMENTATION PDF

Mbsm\_dot\_pro\_private\_pictureAW5524EKTélécharger

---

# **Compresseurs Embraco, , EMU70HLC , R134a, 220 V, 50Hz, 1/5 HP, 149 watts , 180 mL**

written by Lilianne | 30 April 2020

Compresseurs Embraco, , EMU70HLC , R134a, 220 V, 50Hz, 1/5 HP,  
149 watts , 0.17 kW (0.2214 BHP) , 180 mL