

Mbsm.pro , Fn77q17g , 1/4Hp , Electrostar , R12 Refrigerator Compressors , 220V/50-60Hz , 1Ph ,for Refrigerator/Freezer

written by Jamila | 28 September 2018



PictureS Mbsm Dot Pro : www.mbsm.pro

Mbsm.pro , Fn77q17g , 1/4Hp , Electrostar , R12 Refrigerator
Compressors , 220V/50-60Hz , 1Ph ,for Refrigerator/Freezer



PictureS Mbsm Dot Pro : www.mbsm.pro

- 1)S060LKAA OR equivalent in 1/10 HP
- 2)FN43Q88G OR equivalent in 1/8 HP
- 3)FN51Q10G OR equivalent in 1/6 HP
- 4)FN57Q12G OR equivalent in 1/5 HP
- 5)FN66Q14G OR equivalent in 1/5 HP Powerful
- 6)FN77Q17G OR equivalent in 1/4 HP
- 7)FN91Q20G OR equivalent in 1/4 HP Powerful
- 8)FN110Q24G OR equivalent in 1/3 HP



PictureS Mbsm Dot Pro : www.mbsm.pro

Compressor tests - Calorimeter

Parameter	Type	FN77Q17G 1)	QA77C17GAX5	QA91C22GAX5
Evaporation temp.	[°C]	LBP -23,3	LBP -25 2) -23,3	LBP -25 -23,3
Refrigerant		R12	R134a	R134a
Qo				
CECOMAF	[W]		116,7	135
ASHRAE	[W]	191	154,2	187,1
ASHRAE	[kcal/h]	165	132,6	161
P ₁				
CECOMAF	[W]		144,1	166,4
ASHRAE	[W]	180	148,4	171,4
COP				
CECOMAF	[W/W]		0,81	0,81
ASHRAE	[W/W]	1,06	1,04	1,09
Start test				
cold tw = 32 °C		-	o.k	o.k
warm tw = 100 °C		-	o.k	o.k

1) Leaflet data, original compressor

2) average two compressors, measuring



- 1) S060LKAA OR equivalent in 1/10 HP
- 2) FN43Q88G OR equivalent in 1/8 HP
- 3) FN51Q10G OR equivalent in 1/6 HP
- 4) FN57Q12G OR equivalent in 1/5 HP
- 5) FN66Q14G OR equivalent in 1/5 HP Powerful
- 6) FN77Q17G OR equivalent in 1/4 HP
- 7) FN91Q20G OR equivalent in 1/4 HP Powerful
- 8) FN110Q24G OR equivalent in 1/3 HP



Picture5 Mbsm Dot Pro : www.mbsm.pro



Private Picture Copyright : WWW.MBSM.PRO

Mbsm.pro , Jx58lhs5-k , DAEWOO COMPRESSOR , FOR REFRIGERATOR , 1/5 Hp , 220/240 V , R134A

written by Jamila | 28 September 2018



PictureS Mbsm Dot Pro : www.mbsm.pro

Mbsm.pro , Jx58lhs5-k , DAEWOO COMPRESSOR , FOR REFRIGERATOR
, 1/5 Hp , 220/240 V , R134A



< > 🔍 ✕ 3 jx58lhs5 ⚙️

∨ JX58LHS5-K

fx

O	N	M	L	K	A	
	290	R134a	LBP		HPL25YE-5-K	78
	290	R134a	LBP		HPL25YE-5-L	79
						80
						81
						82
					MODEL	83
	كمية الزيت	الغريون	التطبيق	W 7.2+		84
	290	R134a	LBP		HKL27YE-5	85
	290	R134a	LBP		HPL27YE-5	86
	290	R134a	LBP		HPL27YE-5-K	87
	290	R134a	LBP		HSL27YE-5A	88
	290	R134a	LBP		HKL30YE-5	89
	290	R134a	LBP		HPL30YE-5	90
	290	R134a	LBP		HPL30YE-5-K	91
	290	R134a	LBP		HSL30YE-5	92
	290	R134a	LBP		DH70LHP5	93
	290	R134a	LBP		DH80LHP5	94
	290	R134a	LBP		DH90LHK5	95
	290	R134a	LBP		DH99LHP5	96
	290	R134a	LBP		DH90LHP5	97
	290	R134a	LBP		DH120LHG5	98
	290	R134a	LBP		DH126LHG5	99
	290	R134a	LBP		DM99LHK5	100
	230	R134a	LBP		JX41LHP5-K	101
	230	R134a	LBP		JX41LHS5	102
	230	R134a	LBP		JX46LHS5	103
	230	R134a	LBP		JX51LHS5-K	104
	230	R134a	LBP		JX51LHS5	105
	230	R134a	LBP		JX51LHT5	106
	230	R134a	LBP		JX55LHP5-K	107
	230	R134a	LBP		JX55LHS5-K	108
	230	R134a	LBP		JX58LHK5	109
	230	R134a	LBP		JX58LHP5	110
	230	R134a	LBP		JX58LHP5-K	111
	230	R134a	LBP		JX58LHS5	112
	230	R134a	LBP		JX58LHS5-K	113
	230	R134a	LBP		JX58LHS5A	114
						115
						116



كويجيل

هواي

دايو





Vue d'ensemble

Description rapide

Point d'origine:	Gwangju, South Korea	Marque nom:	daewoo	Numéro de Type:	Jx58lhs5-k
Type:	Compresseur frigorifique alternatif:	Application:	Pièces de réfrigération	Certification:	CE

Capacité d'approvisionnement

Capacité d'approvis...30000 Piece/Pieces per Day

Emballage et livraison

Détails d'emballage	Palettisation
Port	Busan, Korea
Délai :	4weeks



Picture5 Mbsm Dot Pro : www.mbsm.pro

Specifications

DAEWOO COMPRESSOR FOR REFRIGERATOR

* R134a/lbp

-Origine: Corée

Nominale Tension [V-hz]	HP	Modèle	Moteur Type	Refroidissement Capacité [W]	Puissance Entrée [W]	COP [W/w]	Refroidissement Type
220/240-50	1/5	JX58LHS5-K	Rsir	163	145	1.12	ST
	1/4	HPL25YE-5-K	Rscr	203	171	1.19	ST
	1/3	HPL30YE-5-K	Rscr	257	207	1.24	ST



* Réduit la température du moteur

* Mise à jour pompe fiabilité

* Réduction de Bruit Niveau

* Amélioration de la capacité de protection

Picture5 Mbsm Dot Pro : www.mbsm.pro

Description rapide

Point d'origine:

Gwangju, South Korea

Marque nom:

daewoo

Numéro de Type:

Jx58lhs5-k

Type:

Compresseur frigorifique

Application:
Pièces de réfrigération

Certification:
CE

alternatif:
compresseur

Capacité d'approvisionnement

Capacité d'approvisionnement:
30000 Piece/Pieces per Day

Emballage et livraison

Détails d'emballage
Palettisation

Port
Busan, Korea

Délai : :
4weeks

Specifications

DAEWOO COMPRESSOR FOR REFRIGERATOR

* **R134a/lbp**

-Origine: Corée

Nominale Tension [V-hz]	HP	Modèle	Moteur Type	Refroidissement Capacité [W]	Puissance Entrée [W]	COP [W/w]	Refroidissement Type
-------------------------	----	--------	-------------	------------------------------	----------------------	-----------	----------------------

220/240-50	1/5	JX58LHS5-K	Rsir	163	145	1.12	ST
	1/4	HPL25YE-5-K	Rscr	203	171	1.19	ST
	1/3	HPL30YE-5-K	Rscr	257	207	1.24	ST

- * Réduit la température du moteur
- * Mise à jour pompe fiabilité
- * Réduction de Bruit Niveau
- * Amélioration de la capacité de protection

Mbsm.pro, 1/5 HP ,170 w, SL23YE-5, DAEW00, HERMETIC COMPRESSOR ,Turkey Refrigeration & Heat , R12

written by Jamila | 28 September 2018

Mbsm.pro, 1/5 HP ,170 w, SL23YE-5, DAEW00, HERMETIC COMPRESSOR ,Turkey Refrigeration & Heat , R12



SL23YE-5
AC 20 240V 50Hz
LRF 7.74 F12
THERMALLY PROTECT
DPEWOO ELECTRONIC Co., Ltd.
MADE IN KOREA
9909021362



Picture5 Mbsm Dot Pro : www.mbsm.pro

Product Details

Company Profile

Inquiry Records(4)

Our Company is since 1969. All Refrigerant parts Trade. All refrigerants products import export. Air Condition Compressor, Other parts, Freezer Room parts, insulation, valve, all refrigerant, in Turkey...

Basic Information

Business Type: Trading Company, Distributor/Wholesaler
Product/Service (We Sell): Refrigerant Parts,Air COnditioner,Copper,Heat Exhancer,Refrigerator,Condensing Unit,Condenser,Compressor
Number of Employees: 11 - 50 People

Trade & Market

Main Markets: Eastern Europe,Southeast Asia,Africa,Mid East,Eastern Asia,Western Europe

Factory Information

Factory Location: Keresteci Recep Sk. No.10



Picture5 Mbsm Dot Pro : www.mbsm.pro

Product Details

Company Profile

Inquiry Records(4)

Item specifics

Place of Origin: Seoul South Korea

JX51LHS5: 1/6 - ST

Port: ISTANBUL

HSL21YE-5-C: 1/5 - OC

HGH25YE-5: 1/4 - ST

HGH23YE-5: 1/5 - ST

HSL25YE-5-C: 1/4 - OC

Certification: CE

DM99HHG5: 3/8 - ST

Type: Refrigeration Compressor

Application: Refrigeration Parts



PictureS Mbsm Dot Pro : www.mbsm.pro

0hter 134A



**Mbsm.pro , Compresseur
frigorifique, Embraco Aspera
,T2178GK , 1Hp ,PIÈCES FRIGO,
404A , 220-240 V 50 Hz**

written by Jamila | 28 September 2018



Mbsm.pro , Compresseur frigorifique, Embraco Aspera ,T2178GK ,
1Hp ,PIÈCES FRIGO, 404A , 220-240 V 50 Hz



Mbsm_dot_pro_private_PDF_compresseur-embraco-aspera-
t2478gkTélécharger



Détails techniques

puissance 1 HP – cylindrée 20,40 cc

220/240V 50HZ

ASPERA

FRIULINOX

FriulinoxArmoireréfrigérée AF12 -20, AF12 PA, AF12-14, AF12-14
VTR, AF12-14 VTRP, AF14, AF14 -22 SILVER VTR, AF6-1, AF6-7,
AF6-7 VTR, AF7, AF7 -20 VTR, AF7 -22 SILVER VTR, AF7 ICE, AF7
VTR, AF7-14, AG60 GOLD, AG60 H20, AG60 SILVER, AG60 SILVERP,
AG60P, AL-EN SUPER, AL-EN1, AL-EN1 SUPER, AL-EN1P, AL-EN2, AL-
EN2 SUPER, AL-ENP, AP12-14, AP14, AP6, AP6-12, AP6-7, AP7,
AP7-14, AR12-14, AR12-14 VTR, AR14, AR6-12, AR6-12 VTR, AR6-7,
AR6-7 VTR, AR7, AR7-14, AR7-14 VTR, AR-EN GOLD, AR-EN SILVER,
AR-EN1, AR-EN1 GOLD, AR-EN1 VTR, AR-EN2, AR-ENP, ARF142,
ARF212 VTR, ARP142, ARP-EN1, ARP-EN2, ARRF21 VTR, EN GOLD, EN
P, EN SILVER, EN1, EN1 GOLD, EN1 H20, EN1 H20 SILVER, EN1
SILVER, EN1 VTR, EN2, EN2 H20

FriulinoxCellulede refroidissement ARP122

FriulinoxVitrineréfrigérée AFP122, AFP142, ARF122

ZANUSSI

ZanussiArmoireréfrigérée ALF110 (110071), ALNF220 (110073),
ALF110 (110074), ALF120 (110075), ALNF220 (110079), ADN111
(110757), AKP110 (111000), AKS110 (111001), AKP120 (111002),
AKN110 (111009), AKN120 (111010), AKP110UK (111121), AKN110UK
(111123), AKNF220 (111127), AKF110UK (111129), AKF110
(111137), AKF120 (111138), ASF110 (112030), ASF110 (112032),

AZP2203 (113228), AZP220360 (113229), ALN2203 (113231),
AZP13430 (113234), AZF2203 (113236), AZF13430 (113237),
MRF601/86 (726059), ETZ601 (726165), ETZ602 (726166), ESQC41F
(726171), ESQC41FR (726172), ESQF41F (726173), ETE601
(726178), ETE602 (726179), ETE601L (726184), ETZ601L (726185),
RS13RX2F (726321), RS13FX2F (726323), RS13DX2F (726335),
RS13PX2F (726459), RS13PX2F6 (726461), RS13P42F (726462),
RS13FX42F (726464), RS13DFX2F (726465), RS13R32F (726467),
SB1300X2F (726468), RS13PW2F (726475), RS13FW2F (726476),
MRF601/86 (726500), RS13FX2F6 (726688), EKZ601 (726890),
EKZ602 (726891), EKE601 (726939), EKE602 (726940), EKE601L
(726949), EKZ601L (726950), RS13RX2FG (726967), RS13FX2FG
(726968), RS13P42F (727128), RS13FX42F (727129), RS13RX4H
(727157), RS13FX4H (727158), KLP1300R (728059), KLP1300F
(728060), RS13PX2FD (728063), E06C0M1V (728077), E06C1M1V
(728078), E06C0D1V (728081), C06FD1G (728173), FGD36 (728271),
RH06RD1G (728408), C06FD1G (728415), RS05RD1G (728433),
E05N0D1C (728457), E05C0D1C (728458), E06N0D1C (728465),
E06N0D2C (728466), E06N0D1V (728467), E06C0D1C (728468),
E06C0D2C (728469), E06C0D1V (728470), E06N0D1C (728522),
E06C0D1C (728523), KLN1300R (728605), KLP1300R (728606),
KEP1300R (728607), KLP1300R (728608), KLP1300F (728609),
KEP1300F (728610), KLP1300F (728611), EMVN500 (730005),
DVP500V11C (730677), DVP501V11C (730678), DVP600V11C (730683),
DVP601V11C (730684), DVP602V11C (730685), DVP600V12C (730686),
DVP601V12C (730687), DVP602V12C (730688), DVN600V11C (730701),
DVN601V11C (730702), DVN602V11C (730703), DVN600V12C (730704),
DVN601V12C (730705), DVN602V12C (730706), DVN500V11C (730721),
DVN501V11C (730722), MVP600V11C (730725), MVP601V11C (730726),
MVP602V11C (730727), MVP600V12C (730728), MVP601V12C (730729),
MVN600V11C (730741), MVN601V11C (730742), MVN600V12C (730743),
MVN601V12C (730744), DVP500V11C (730768), MVP501V11C (730769),
MVP502V11C (730770), MVN500V11C (730780), MVN501V11C (730781),
MLC601V11C (730938), MLC602V11C (730939), DVC500V11C (731242),
DVC501V11C (731243), MVC502V11C (731244), DVC600 (731250),
DVC601 (731251), MVC602 (731252), DVC600 (731255), DVC601
(731256), MVC600V11C (731282), MVC601V11C (731283), MVC600V12C

(731284), MVC601V12C (731285), MVC500V11C (731294), MVC501V11C (731295), DVC602 (731302), DVC602 (731303), DVNN13022C (732073), DVNN13122C (732074), MVNN13022C (732079), MVNN13122C (732080), DVNC13022C (732095), EDVC13122C (732096), MVNC13022C (732103), MVNC13122C (732110), MLC600V11C (732251), MLC601V11C (732255), MLC602V11C (732257), DVP6VP12CC (734079), PDVN901V11C (737216), PDVN901V12C (737217), PDVN907V11C (737218), PDVN907V12C (737219), PDVC901V11C (737220), PDVN907V12C (737221), PDVC907V11C (737222), PDVC907V11C (737223), ILF120 (770508), RVPE061 (771100), RSPE061 (771101), RVPE062 (771102), RVNE061 (771108), RVNE062 (771109), KVPE662 (771115), RPPE061 (771155), ILF110 (771537), ZLNF220 (771539), RD13PX2F (790018), RD13FX2F (790019)

ZanussiCellulede refroidissement ESQC41F (691044), ESQC41FR (691045), ESQF41F (691046), ESQF41FR (691047), ESQF41FR (726144)

ZanussiCongélateurcoffre MRF4808660 (726042), MRF401/86 (726058), MRF240/86 (726060), MRF480/86 (726061)

ZanussiTableréfrigérée STRP1101 (113084), STRP1102 (113088), STRP1601 (113092), TRN224C (113102), TRN224D (113103), TRN224E (113104), STRP1602 (113105), STRP1603 (113106), STRP2201 (113107), STRP2202 (113108), STRP2203 (113109), STRP1101S (113128), STRP1601S (113129), STRP2201S (113130), STRP1602R (113131), TRN132A (113150), TRN132B (113151), TRN132C (113152), TRNA132A (113153), TRNA132B (113154), TRNA132C (113155), TRRN132A (113156), TRRN132B (113157), TRRN132C (113158), TRN183A (113159), TRN183B (113160), TRN183C (113161), TRN183D (113162), TRNA183A (113163), TRNA183B (113164), TRNA183C (113165), TRNA183D (113166), TRRN183A (113167), TRRN183B (113168), TRRN183C (113169), TRRN183D (113170), TRN224A4 (113171), TRN224B (113172), TRNA224A (113173), TRNA224B (113174), TRRN224A (113175), TRRN224B (113176), TRF132A (113177), TRFA132A (113178), TRRF132A (113179), TRF183A (113180), TRFA183A (113181), TRRF183A (113182), TRN132AE (113183), TRN183AE (113184), TRN224AE

(113185), TRF132AE (113186), TRF183AE (113187), STRP1603R
(113192), STRP2201R (113193), STRP2202R (113194), STRP2203R
(113195), STRP1101R (113196), STRP1102R (113197), STRP1601R
(113198), TCGS/1V7T (121856), TCGS/2V7T (121857), TCGS/1VC27
(121858), TCGS/2V2C7 (121859), TCGRS/1V7T (121866), TCGRS/2V7T
(121867), TCGRS/1VC2 (121868), TCGRS/2V2 (121869), TCGS2VC27T
(121905), RCSN2M2 (726139), RCSN2M12 (726140), RCSN3M3
(726141), RCSN3M22 (726145), RCSN3M14 (726146), RCSN4M4
(726147), RCSN4M32 (726148), RCSN4M24 (726170), RCSN2M2U
(726182), RCSN3M3U (726188), RCSN4M4U (726197), RCDR4M24
(726199), RCDR4M16 (726200), RCDR4M08 (726201), RCSN2M2R
(726202), RCSN2M12R (726203), RCSN3M3R (726210), RCSN3M22R
(726211), RCSN3M14R (726212), RCSN4M4R (726213), RCSN4M32R
(726220), RCSN4M24R (726221), RCDR2M20 (726408), RCDR2M12
(726409), RCDR2M20U (726410), RCDR2M12U (726411), RCDR2M04R
(726412), RCDR3M22 (726413), RCDR3M0U (726414), RCDR3M22U
(726415), RCDE4M40 (726416), RCDR4M32 (726417), RCDR4M40U
(726418), RCDR4M32U (726419), RCDFM20UX (726421), RCDF3M30U
(726422), RCER2M2 (726423), RCER3M3 (726424), RCER4M4
(726425), RCEF2M2X (726426), RCEF3M3 (726427), RCDR2M20
(726550), RCDR2M12 (726551), RCDR2M04 (726552), RCDR2M20U
(726553), RCDR2M12U (726554), RCDR2M04U (726555), RCDR2M20R
(726556), RCDR2M12R (726557), RCDR2M04R (726558), RCDR3M30
(726559), RCDR3M22 (726560), RCDR3M14 (726561), RCDR3M06
(726562), RCDR3M0U (726563), RCDR3M22U (726564), RCDR3M14U
(726565), RCDR3M06U (726566), RCDR3M30R (726567), RCDR3M22R
(726568), RCDR3M14R (726569), RCDR3M06R (726570), RCDR4M40
(726571), RCDR4M32 (726572), RCDR4M40U (726573), RCDR4M32U
(726574), RCDR4M40R (726575), RCDR4M32R (726576), RCDF2M20
(726577), RCDFM20U (726578), RCDF2M20R (726579), RCDF3M30
(726580), RCDF3M30U (726581), RCDF3M30R (726582), RCSER2M2
(726583), RCSER3M3 (726584), RCSER4M4 (726585), RCEF2M2
(726586), RCEF3M3 (726587), RCSN2M2T (726668), RCSN3M3T
(726669), RCSN4M4T (726670), RCSER2M2U (726682), RCSER3M3U
(726683), RCER4M4U (726684), RCEF2M2U (726685), RCEF3M3U
(726686), RCSF2M24 (727009), RCSF3M34 (727010), HB2PNTR
(727108), HB3PNTR (727109), HB4PNTR (727110), HB2P (728086),

HB1P2C12 (728139), HB1P3C (728157), HB4C (728158), HB3P (728207), HB2P2C (728235), EDON590124 (728238), EDON590116 (728239), EDON590108 (728240), HB1P4C (728241), HB6C (728242), HB4P (728243), HB3P2C (728244), HB2P4C (728245), HB8C (728246), HB2PR (728247), HB1P2CR (728248), HB1P3CR (728254), HB4CR (728259), HB3PR (728264), HB2P2CR (728294), HB1P4CR (728295), HB6CR (728296), HB4PR (728297), HB3P2CR (728298), HB2P4CR (728299), HB8CR (728300), HB1P2C (728302), RCHBF1P2C (728304), RCHBF2P2C (728305), S02P200I (728352), S02P120I (728353), S04P300I (728354), S04P220I (728361), S04P140I (728362), S05P400I (728363), S05P320I (728364), E29N200I (728368), E29N120I (728369), E29N040I (728370), E29N200IA (728371), E29N120IA (728372), E29N040IA (728373), E29N200R (728374), E29N120R (728375), E29N040R (728376), E44N300I (728377), E44N220I (728378), E44N140I (728379), E44N060I (728380), E44N300IA (728381), E44N220IA (728382), E44N140IA (728383), E44N060IA (728384), E44N300R (728385), E44N220R (728386), E44N140R (728387), E44N060R (728388), E59N400I (728389), E59N320I (728390), E59N400IA (728391), E59N320IA (728392), E59N400R (728393), E59N310R (728394), E29C200I (728395), E29C200IA (728396), E29C200R (728397), E44C300I (728398), E44C300IA (728399), E44C300R (728400), S05P240I (728401), EDON2912SE (728492), EDON4413SE (728493), EDON5914SE (728494), EDOC2912SE (728495), EDOC4413SE (728496), HB2PU (728509), HB3PU (728510), HB4PU (728511), RCSF2M2 (728512), RCSF3M3 (728517), RCSF2M12 (728518), RCSF3M22 (728519), S04P220R (728536), S04P140R (728537), S05P400R (728538), S05P320R (728539), S05P240R (728540), HB1P2CRN (728552), HB1P3CRN (728554), HB4CRN (728556), HB2P2CRN (728558), HB1P4CRN (728560), HB6CRN (728562), HB3P2CRN (728564), HB2P4CRN (728566), HB8CRN (728568), HBF2PN (728569), HBF1P2CN (728570), HBF3PN (728571), RCHBF2P2CN (728573), S02P200IA (728585), S04P300IA (728586), S05P400IA (728587), S02P200R (728588), S02P120R (728589), S04P300R (728590), RCHBF2P (728635), RCHBF3P (728636)

...et d'autres dispositifs

– ALPENINOX

T2178GK – ASPERA

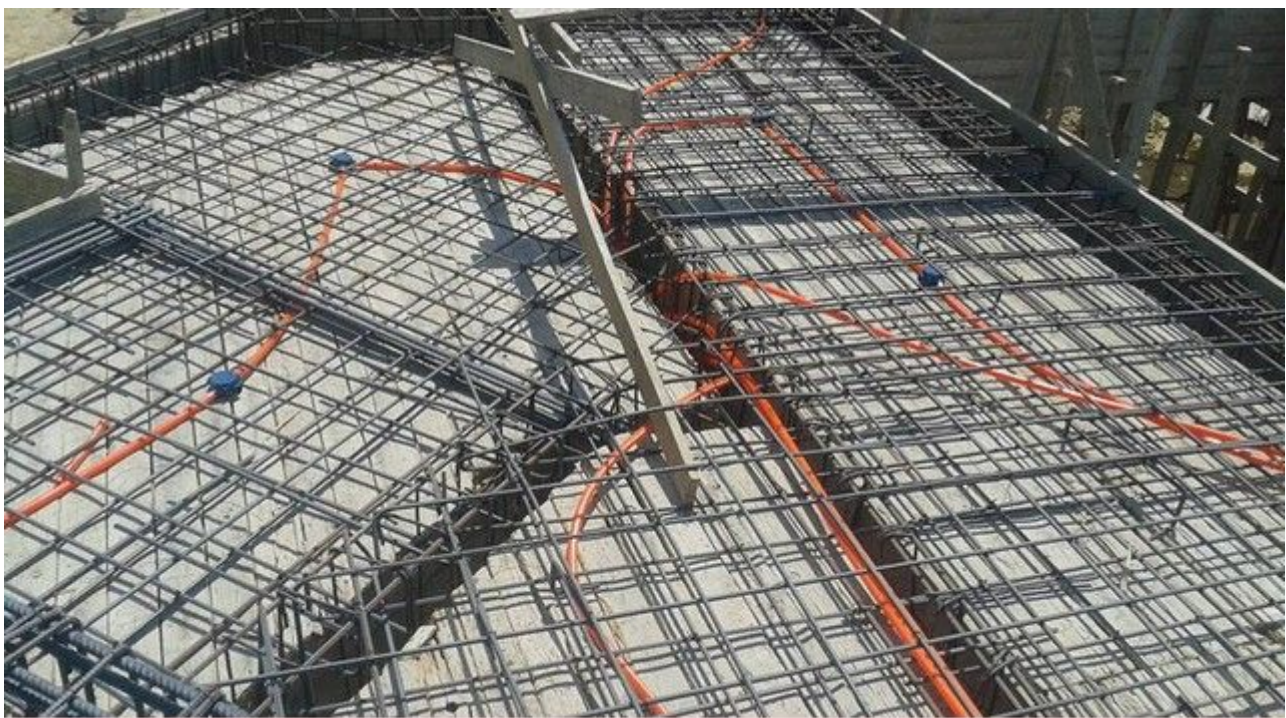
01AS0970 – ATEL – ELECTROLUX PROFESSIONAL

T2178GK – EMBRACO – FRIULINOX – INDESIT – UNIVERBAR –
WHIRLPOOL – ZANUSSI

...numéros de fabricant supplémentaires possibles

Mbsm.pro, The risk of extending the electric hoses under the reinforcing steel for ceilings

written by Jamila | 28 September 2018



Picture5 Mbsm Dot Pro : www.mbsm.pro

Mbsm.pro, The risk of extending the electric hoses under the reinforcing steel for ceilings

Mbsm.pro, COMPRESOR DANFOSS ,FR7.5B ,1/5 Hp , R-12 ,freezer ,capillary 260 cm , 0.31

written by Jamila | 28 September 2018

Mbsm.pro, COMPRESOR DANFOSS ,FR7.5B ,1/5 Hp , R-12 ,freezer
,capillary 260 cm , 0.31

نصائح لمتعلمي القيادة حول التوقف والوقوف وأضواء السيارة

written by Jamila | 28 September 2018



PictureS Mbsm Dot Pro : www.mbsm.pro

نصائح لمتعلمي القيادة حول التوقف والوقوف وأضواء السيارة

mbsm.pro, COMPRESSEUR, GUY75AA ,R134 ,1/5 HP

written by Jamila | 28 September 2018



PictureS Mbsm Dot Pro : www.mbsm.pro

Compressors of the hermetic type from the manufacturer ACC Cubigel Huayi Electrolux ZEM can be found in our online shop category compressors.

Mbsm.pro, Réfrigérateur, remplacement d'un moteur, R600a ,par un ,moteur R134a

written by Jamila | 28 September 2018

Bonsoir, MBSM.PRO

le remplacement d'un compresseur R600A par un compresseur

R134A est possible a condition:

Mbsm.pro , BILLES EN ALUMINE D'HAUTE DENSITÉ HITO 92HD ,Filtre déshydrateur

written by Jamila | 28 September 2018



Les billes d'alumine fabriquées par Hito Technical Industries, 92HD, sont des billes avec un contenu minimum d'alumine du 92% ; ainsi, elles deviennent les billes avec la densité la plus haute du marché. Les billes HITO 92HD se caractérisent pour leur haute résistance à l'usure dû à la stricte sélection des dopants de sintérisé de l'alumine, lesquels nous permettent réguler parfaitement la température de cuisson et, par la suite, réguler la structure cristalline que s'en forme. Cette faible tasse d'usure,