

**Mitsubishi, Electric, fixed
frequency, NH41VNHT 2.55HP,
single-phase, 220V, rotary,
air condition, 26000 btu/h**

written by Amina | 22 October 2023



SIAM COMPRESSOR INDUSTRY

MITSUBISHI ELECTRIC CO., LTD.

REFRIGERANT COMPRESSOR
MODEL **NH41VNHT**

MANUFACTURING DATE 16092010

POWER SOURCE
220-240V 1~ 50Hz

POWER INPUT 2410 W AT 50 HZ

LRA 70/77 A

REFRIGERANT R-22

OIL 1.30 L

AP 2.74 MPa

SP 10.5 MPa

THERMALLY PROTECTED

Mitsubishi, Electric, fixed frequency, NH41VNHT 2.55HP,
single-phase, 220V, rotary, air condition, 26000 btu/h

**Compressor, Zanussi, HLY80AA,
1/7Hp, 220-240V 50Hz ~1,
R600a, ZEM, Low Back
Pressure, RSIR**

written by Lilianne | 22 October 2023



Private Picture Copyright : WWW.MBSM.PRO

Technical Data Sheet
Compressor model HLY80AAa
Voltage 220-240V 50Hz ~1
Refrigerant R600a

APPLICATION COMPRESSOR MOTOR

Application Low Back Pressure Displacement 8,10 cm³ Nominal Power 1/7 hp

Refrigerant R600a Diameter 24,29 mm Voltage/Frequency 220-240V 50Hz

Evaporating Temp. -35,0 °C to -10,0 °C Stroke 17,47 mm Voltage range 187-264 V

Expansion Capillar Net Weight 9,45 Kg Type RSIR

Comp. Cooling Static Oil type ISO VG 10 MINER Phase number 1 PH

Max. ambient temp. 43,0 °C Oil charge 205 cm³ Locked Rotor Amps (LRA) 8,60 A

Max. Cont. Current (MCC) 1,00 A

Main W. resist. at 25°C 22,02 Ω

Start W. resist. at 25°C 22,53 Ω

NOMINAL PERFORMANCE

ASHRAE CECOMAF

Cooling Capacity 113 kCal/h 99 W

COP 1,41 W/W 1,11 W/W

EER 1,22 kCal/Wh 0,96 kCal/Wh

Input Power 93 W 89 W

Current 0,62 A 0,60 A

TEST CYCLE CONDITIONS

ASHRAE CECOMAF

LBP (B) LBP (A)

Evaporating temp. -23,3 °C -25,0 °C

Condensing temp. 55,0 °C 55,0 °C

Liquid temp. 32,0 °C 55,0 °C

Ambient temp. 32,0 °C 32,0 °C

Suction temp. 32,0 °C 32,0 °C

Voltage/Frequency 220 V 50 Hz 220 V 50 Hz

ELECTRICAL COMPONENTS

Relay Option 1

Reference PTC K100

Voltage 200-240 V

Resistance 14.00 Ω

Protector Option 1 Option 2 Option 3 Option 4
Reference MSP318LZ 4TM189NFBYY T0462 AE37FJ
Current 5,90 A 5,50 A 6,20 A 5,90 A
Time check 7,5-14 seg 5-15 seg 7,5-14 seg 7,5-14 seg
Disc temp. (Open/Close) 120,00 / 61,00 °C 120,00 / 61,00 °C
110,00 / 62,00 °C 115,00 / 62,00 °C

Mbsm_dot_pro_private_PDF_HLY80aa_danfoss_HLY80AAa_R600a_220_50
Télécharger





Private Picture Copyright : WWW.MBSM.PRO

smart

TECUMSEH EUROPE, COMPRESSEUR, REFROIDISSEUR, AE1360AS, 1/5 HP, AE140-FS-510, Lra 9.5, LBP, R12, 220-240V ~ 50Hz

written by Lilianne | 22 October 2023

Model:AE1360AS

Product Description

Type: Reciprocating

Application: LBP – Low Back Pressure

Refrigerant: R12

Voltage/Frequency: 220-240V ~ 50Hz

Product Specifications

Performance

Refrigeration Capacity Input Power Efficiency

EVAP

TEMP COND AMBIENT RETURN LIQUID

Condition TEMP TEMP GAS TEMP

Test

Voltage Btu/h kcal/h W W Btu/Wh kcal/Wh W/W

ASHRAE

240V ~

50HZ 560 141 164 157 3.57 .9 1.05

-23°C (-

10°F) 54°C (130°F) 32°C (90°F) 32°C (90°F) 32°C (90°F)

General

Evaporating Temp. Range: -34.4°C to -12.2°C (-30°F to 10°F)

Motor Torque:

Low Start Torque

(LST)

Compressor Cooling: Static

Mechanical

Weight: 10.231

Weight Unit of Measure: KG

Displacement (cc): 7.55

Oil Type: N/A

Viscosity (cSt): N/A

Oil Charge (cc): N/A

Electrical

Voltage Range (50 Hz): 198-253

Voltage Range (60 Hz): N/A

Locked Rotor Amps (LRA): 11

Rated Load Amps (RLA 50 Hz): 1.12

Rated Load Amps (RLA 60 Hz): N/A

Max. Continuous Current (MCC in Amps): N/A

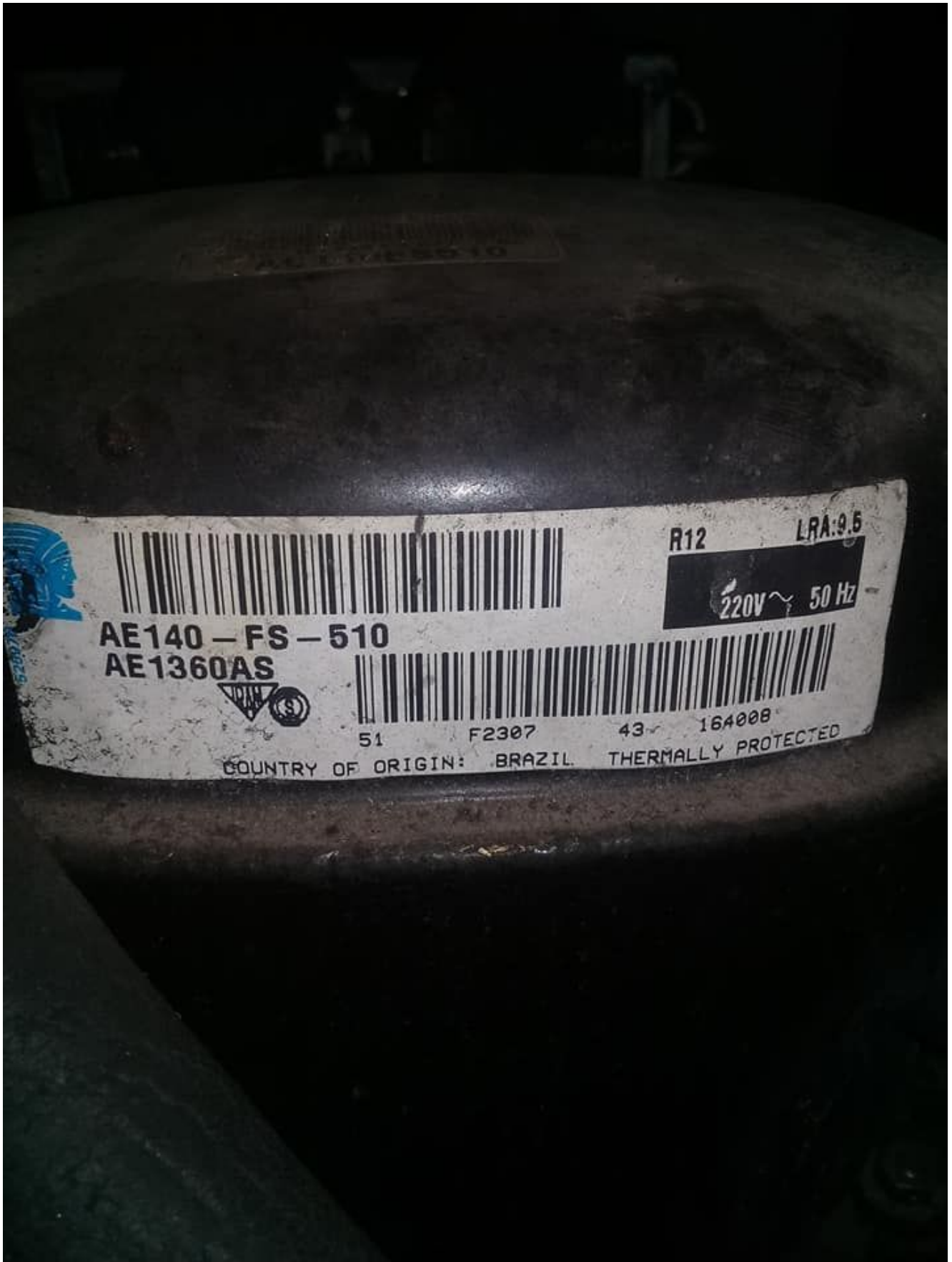
Motor Resistance (Ohm) – Main: 11.06

Motor Resistance (Ohm) – Start: 44.87

Motor Type: RSIR

Overload Type: N/A

Relay Type: Current Relay



Private Picture Copyright : WWW.MBSM.PRO

Mbsm_dot_pro_private_PDF_AE1360ASTélécharger
Mbsm_dot_pro_private_PDF_AE1360AS-1Télécharger
Mbsm_dot_pro_private_PDF_AE1360AS-2Télécharger

**Compressor ELECTROLUX,
CUBIGEL ,GP12TB ,Hermetic
piston ,ACC ,HMBP , moteur HP
, 3/8 HP++, 1/2 hp- , 1PH ,
R134A , Pression 1.7 Bar ,
220V**

written by Lilianne | 22 October 2023

| | Model | Refr. | HP |
|----------------------------|----------------------|--------------|-----------|
| ▶ <input type="checkbox"/> | <u>GL45PB</u> | HMBP::R134a | 1/6 |
| ▶ <input type="checkbox"/> | <u>GL45PB</u> | HMBP::R134a | 1/6 |
| ▶ <input type="checkbox"/> | <u>GL45TB</u> | HMBP::R134a | 1/6 |
| ▶ <input type="checkbox"/> | <u>GL60PB</u> | HMBP::R134a | 1/5 |
| ▶ <input type="checkbox"/> | <u>GL60TB</u> | HMBP::R134a | 1/5 |
| ▶ <input type="checkbox"/> | <u>GL80PB</u> | HMBP::R134a | 1/5 |
| ▶ <input type="checkbox"/> | <u>GL80TB</u> | HMBP::R134a | F |
| ▶ <input type="checkbox"/> | <u>GL90TB</u> | HMBP::R134a | 1/4 |
| ▶ <input type="checkbox"/> | <u>GP12TB</u> | HMBP::R134a | 3/8 |

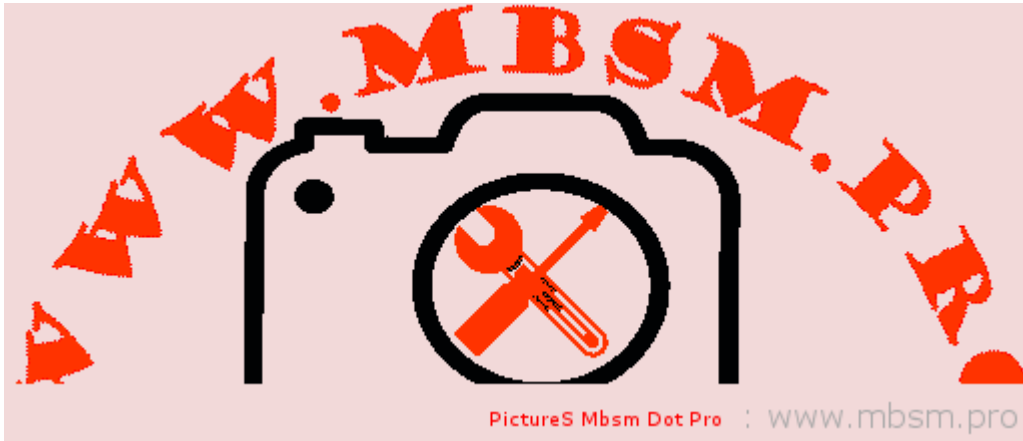
PictureS Mbsm Dot Pro : www.mbsm.pro

Private Picture Copyright : WWW.MBSM.PRO

Compressor ELECTROLUX, CUBIGEL GP12TB ,Hermetic piston ,ACC ,HMBP , moteur HP , 3/8 HP , 1PH , R134A , Pression 1.7 Bar

PREFIXES , CONVERSION ,FACTORS

written by Lilianne | 22 October 2023



PREFIXES , CONVERSION ,FACTORS

www.mbsm.pro , Full Form of Short Answer , Electric , climatisation , Terms

written by Lilianne | 22 October 2023

www.mbsm.pro , Full Form of Short Answer , Electric ,
climatisation , Terms

**Mbsm.pro , L76AV
, Compresseur, 1/5 HP ,149W,
R12 ,E80101 ,Zem ,HMBP
, Hermetic piston compressors
, 220V/50 , 1PH(phase)**

written by Jamila | 22 October 2023



PictureS Mbsm Dot Pro : www.mbsm.pro

Mbsm.pro , L76AV , Compresseur, 1/5 HP ,149W, R12 ,E80101 ,Zem
,HMBP , Hermetic piston compressors , 220V/50 , 1PH(phase)

**Mbsm.pro, The risk of
extending the electric hoses
under the reinforcing steel**

for ceilings

written by Jamila | 22 October 2023



Mbsm.pro, The risk of extending the electric hoses under the reinforcing steel for ceilings

www.mbsm.pro , Some Funny Electric pictures part1

written by mahdi miled | 22 October 2023

www.mbsm.pro , Some Funny Electric pictures part1

mbsm-dot-pro-picture-electric -funny1.jpg (37 KB)



mbsm-dot-pro-picture-electric -funny1.jpg (47 KB)



mbsm-dot-pro-picture-electric -funny2.jpg (63 KB)



mbsm-dot-pro-picture-electric -funny2.jpg (73 KB)



mbsm-dot-pro-picture-electric -funny3.jpg (121 KB)



mbsm-dot-pro-picture-electric -funny3.jpg (124 KB)



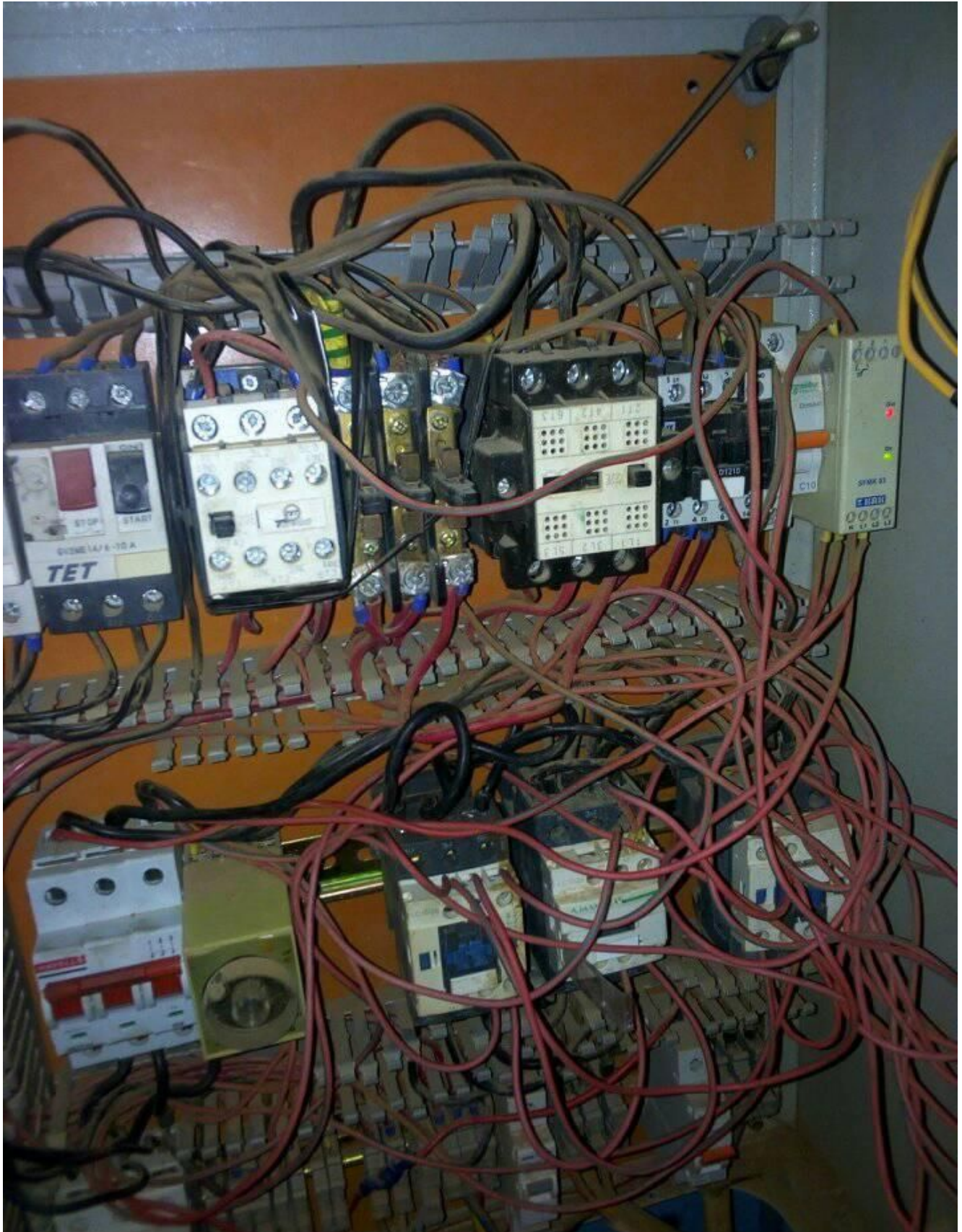
mbsm-dot-pro-picture-electric -funny4.jpg (145 KB)



mbsm-dot-pro-picture-electric -funny4.jpg (133 KB)



mbsm-dot-pro-picture-electric -funny5.jpg (117 KB)



Picture5 Mbsm Dot Pro : www.mbsm.pro

mbsm-dot-pro-picture-electric -funny5.jpg (129 KB)



mbsm-dot-pro-picture-electric -funny6.jpg (23 KB)



mbsm-dot-pro-picture-electric -funny6.jpg (27 KB)



mbsm-dot-pro-picture-electric -funny7.jpg (62 KB)



mbsm-dot-pro-picture-electric -funny7.jpg (72 KB)



mbsm-dot-pro-picture-electric -funny8.jpg (31 KB)



mbsm-dot-pro-picture-electric -funny8.jpg (33 KB)

