

**Compressor ,DANFOSS , 2123
104L,coolant
R404a/R507,SC18CL ,220-240V
50Hz, LBP/MBP (csr),hermetic
,13,7kg ,5/8HP (Big),781W**

written by Lilianne | 22 May 2020

Compressor ,DANFOSS , 2123 104L,coolant R404a/R507,SC18CL
220-240V 50Hz, LBP/MBP (csr),hermetic ,13,7kg ,5/8HP
(Big),781W

**AES45D , huayi compressor
co.ltd , 1/8+Hp(Big , Hbp
,Pression) ,R12**

written by Lilianne | 22 May 2020

AES45D , huayi compressor co.ltd , 1/8+Hp(Big , Hbp ,Pression)
,R12

Tecumseh , CAJ4511A

, Compressor , 1 HP, 208-230V, 1 PHASE, R12, Hermetic , Reciprocating Compressor Replacement

written by Lilianne | 22 May 2020

Tecumseh , CAJ4511A , Compressor , 1 HP, 208-230V, 1 PHASE,
R12, Hermetic , Reciprocating Compressor Replacement

Compresor Embraco, T/M-B FFU160HAX 1/2 HP, 1,533 BTU/h, R-134 A , MBP

written by Lilianne | 22 May 2020

Compresor Embraco, T/M-B FFU160HAX 1/2 HP, 1,533 BTU/h, R-134 A
, MBP

HERMETIC , AW5524EK , Compressor , 20,950 BTU

**, 230 / 1 / 60 R-22 , : 220-240
V / 50 Hz. , 1 Phase ,
1.7458333333 TON**

written by Lilianne | 22 May 2020

Electrical : 220-240 V/50 Hz. 1 Phase

Nominal Performance

Capacity 6,140 / – Watts

20,950 / – BTU/Hr

5,280 / – Kcal/Hr

Power Input 2,089 / – Watts

Locked Rotor Amps 51.30 / – Amps

Max Continuous Current – / – Amps

Rated Load Amps 9.64 / – Amps

COP 2.94 / – Watts / Watts

EER 10.03 / – BTU/W-Hr

Testing Conditions

Condensing Temperature 54.40 °C 129.9 °F

Evaporating Temperature 7.20 / – °C 45.0 / – °F

Liquid Temperature 46.10 °C 115.0 °F

Return Gas Temperature 35.00 °C 95.0 °F

Ambient Temperature 35.00 °C 95.0 °F

Application

Evaporating Temp. Range HBP, A/C @ 0.00 ° C to 13.00 ° C
(32.0° F to 55.4° F)

Heat Pump -23.30 ° C to 13.00 ° C
(-9.9° F to 55.4° F)

Refrigerant R22

Refrigerant Flow Control Capillary Tube

Compressor Cooling Fan

Compressor and Motor data

Compressor Type Reciprocating

Displacement 43.10 cc.

Oil Type Mineral Oil

Oil Charge 964 cc.

Motor Type P.S.C ; 2 Pole 2,850 / – r/m

Voltage Range 198-264/- Volts 50/- Hz.

Winding Resistance at 25 ° C

Start 2.52 Ohms

Run 1.24 Ohms

Weight with Oil 27.72 Kg.

Weight with Oil and Accessories 28.05 Kg.

Electrical Components

Motor Protector

Type Internal Overload

Model Number 4042KGE661-2

Open / Close 125-135 / 50-70 ° C

1st Cycle trip at 25 ° C 50.00 Amps(main) 30.00 Amps(start)

Motor Starter

Type Potential Relay

Model Number 4043KGE681-4(RVA3G6D)

Pick Up (max.) 180.00-195.00 Volts

Drop Out (min.) 40.00-90.00 Volts

Terminal Cover KGM 901-3

Start Capacitor 88-106 µF 330 VAC.

Disch Resistor for Start Cap –

Run Capacitor 45 µF 370/440 VAC.

Mounting Kit

Rubber Grommet 4007KGM905-2

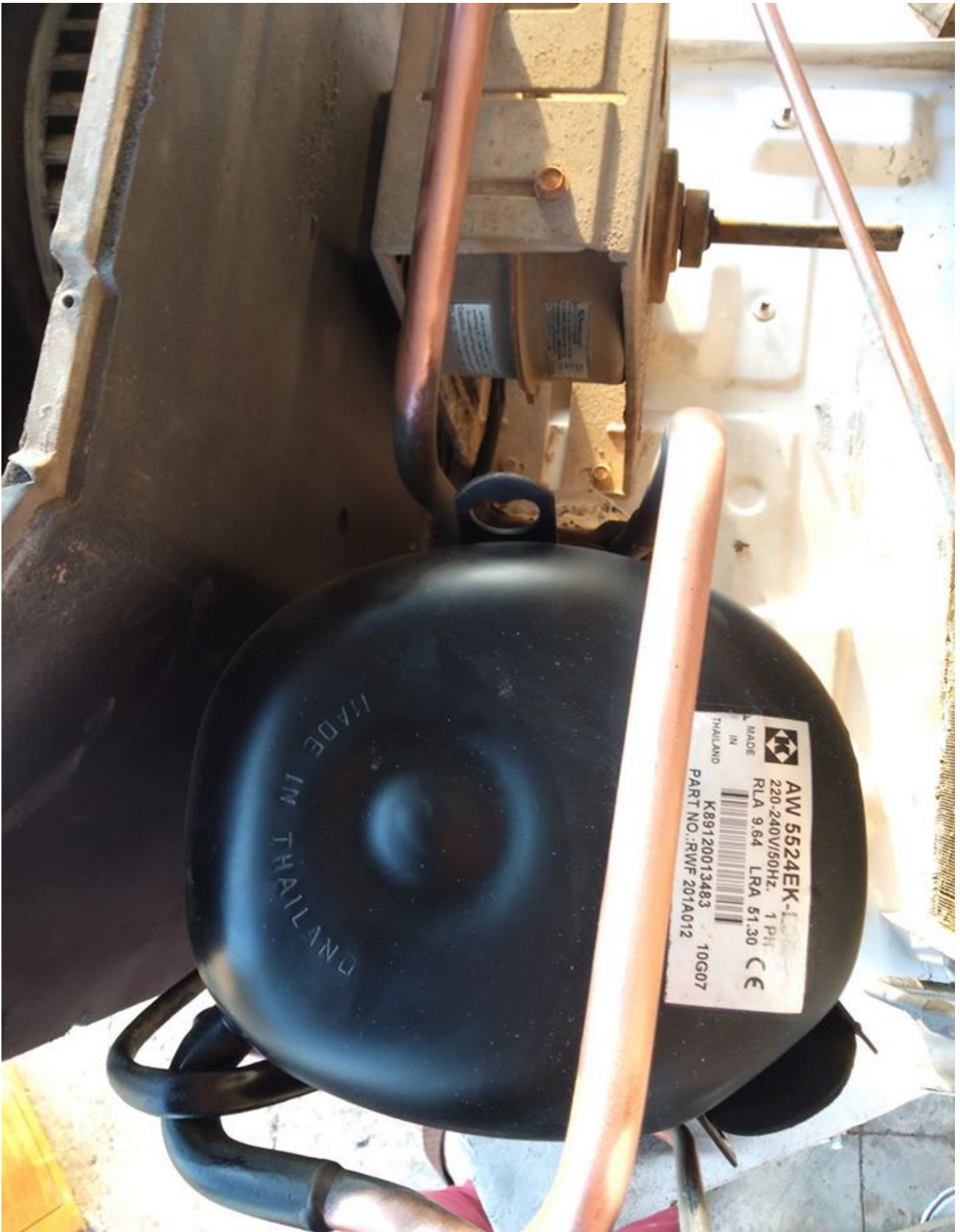
Sleeve Grommet 4023KGM903-2

Washer –

Since we are constantly improving our product , the specification are subject to change without notice.

REV. DATE C / N No.

ECN 01-04-14 ECN 0515/13





DOCUMENTATION PDF

Mbsm_dot_pro_private_pictureAW5524EKTélécharger

**NL8.4FT ,Tropical , 1/4 Hp
Compressor R134a 220-240V
50Hz ,HERMETIC ,143 W -25/+55
°C , LBP, 105g6866, 105g6865**

written by Lilianne | 22 May 2020

NL8.4FT ,Tropical , 1/4 Hp Compressor R134a 220-240V 50Hz
,HERMETIC ,143 W -25/+55 °C , LBP

QD110H , Chest Freezer

Compressor , 1/3HP , 220V/50Hz , R134A

written by Lilianne | 22 May 2020

1/3HP Refrigeration Compressor 220V/50Hz R134A

AC Compressor: R134A Hermetic LBP Piston Reciprocating
Compressor

Model: WQ110H

Power Supply: 220-240/50-60V/Hz

Displacement: 11CC

Nominal Power: 1/3HP

Rated Power: 233W

Cooling Capacity: 280W

COP: 1.20W/W

Motor Type: RSIR

Starting relay: Starting Relay/PTC

Starting Capacitor: / μ F

Running Capacitor: / μ F

Cooling Type: F

Application: LBP

Certificate: 3C

1X20'FCL: 1600PCS



PictureS Mbsm Dot Pro : www.mbsm.pro

Application:

LBP: Low back pressure; Refrigerator, Freezer, Wine cooler

MBP: Medium Back Pressure; Air-conditioner, vending machine

HBP: High Back Pressure: Air-conditioner, ice maker

LBP ASHRAE Test Condition:

Evaporation Temperature: -23.3 °C

Condensing Temperature: 54.4 °C

Subcooling Temperature: 32.2 °C

Ambient Temperature: 32.2 °C

MBP ASHRAE Test condition:

Evaporation Temperature: -5 °C

Condensing Temperature: 54.4 °C

Ambient Temperature: 35 °C

Subcooling Temperature: 46.1

Suction Temperature: 35 °C

HBP ASHRAE Test condition:

Evaporation Temperature: 7.2°C

Condensing Temperature: 54.4°C

Ambient Temperature: 35°C

Subcooling Temperature: 46.1°C

Suction Temperature: 35°C

Parameter Variation Range:

Cooling Capacity: $\geq 95\%$

Input Power: $\leq 115\%$

Current: $\leq 110\%$

COP: $\geq 95\%$

Cooling Type:

S: Natural cooling

F1: Fan cooling, 200mm fan diameter, 1.5m/s air speed

F2: Fan cooling, 200mm fan diameter, 3m/s air speed

COMPRESOR ACC GL80AN R134 1/5, Cubigel Compressors LBP , Hermetic

written by Lilianne | 22 May 2020



Type: Hermetic piston compressors

Producer: ACC

Series: HMBP

Model: GL80AN

General data

Refrigerant:	R134a	
Discharge element:	C	
Cooling:	S	
Maximum ambient temperature [°C]:	43	

Compressor's data

Cylinder capacity [cm ³]:	8,1	
Displacement [m ³ /h]:	1,4	
Weight [kg]:	10,6	
Oil charge [cm ³]:	445	
Oil type:	ISO VG 19 ESTER	

Engine's data

Engine type:	RSIR	
Power [KM]:	1/5	
Starting element:	LST	
Power supply:	220V 50Hz	
Voltage range:	170-242	
Locked rotor current [A]:	18	
Running winding resistance (25°C) [Ω]:	5,81	
Starting winding resistance (25°C) [Ω]:	11,01	

Electrical data

Relays:	3003	
Shielding element:	MRP321LZ, T0683, AF11FI	
Starting capacitor volume [μ F]:		

Connections

	millimeters	inches	
Suction tube:	6,5		
Service tube:	6,5		
Discharge tube:	4,9		