

Notion , Ne jamais utiliser de , pâte à joints, ni Téflon, ni filasse pour , l'étanchéité des raccords , de Climatisation

written by Lilianne | 22 April 2020

Notion , Ne jamais utiliser de , pâte à joints, ni Téflon, ni
filasse pour , l'étanchéité des raccords , de Climatisation

Erreur grave , Fuite cuivre sans isolation plastique

written by Lilianne | 22 April 2020















Picture5 Mbsm Dot Pro : www.mbsm.pro



Erreur grave ,Fuite cuivre sans isolation plastique

Choice Of Capillary , EMBARACO ASPERA

written by Lilianne | 22 April 2020

R 290 - R 404A - R 507 - MBP Applications

| COMPRESSOR | FREQUENCY | DIMENSION | |
|--------------------|-----------|-------------------------------------|-------------------------------------|
| | | (from -20°C to -5°C evap. temp.) | (from -5°C to +15°C evap. temp.) |
| T6220GK | 50 Hz | 1.37 mm I.D. × 1.90 m | 1.37 mm I.D. × 1.50 m |
| NT6220U - NT6220GK | 60 Hz | 1.37 mm I.D. × 1.65 m | 1.63 mm I.D. × 1.75 m |
| T6222GK | 50 Hz | 1.37 mm I.D. × 1.60 m | 1.63 mm I.D. × 1.70 m |
| NT6222U - NT6222GK | 60 Hz | 1.63 mm I.D. × 2.85 m | 1.63 mm I.D. × 1.55 m |
| NJ9226GK | 50 Hz | 1.63 mm I.D. × 2.75 m | 1.63 mm I.D. × 1.60 m |
| NT6224U - NT6226GK | 60 Hz | 1.63 mm I.D. × 2.35 m | 1.90 mm I.D. × 1.80 m |
| NJ9232GK | 50 Hz | 1.90 mm I.D. × 2.65 m | 2.16 mm I.D. × 2.05 m |
| | 60 Hz | 1.90 mm I.D. × 2.00 m | 2.16 mm I.D. × 1.60 m |
| NT6232U - NT6232GK | 50 Hz | 2.16 mm I.D. × 2.45 m | 2 × 1.63 mm I.D. × 1.70 m |
| | 60 Hz | 2.16 mm I.D. × 2.00 m | 2 × 1.63 mm I.D. × 1.60 m |

PictureS Mbsm Dot Pro : www.mbsm.pro

- ✘
- ✘
- ✘
- ✘
- ✘

R22 - MBP/HBP Applications

| COMPRESSOR | FREQUENCY | DIMENSION | |
|--|-----------|-------------------------------------|-------------------------------------|
| | | (from -20°C to -5°C evap. temp.) | (from -5°C to +10°C evap. temp.) |
| T6217E | 50 Hz | 1.27 mm I.D. × 2.3 m | 1.27 mm I.D. × 1.6 m |
| T6220E | 50 Hz | 1.37 mm I.D. × 2.0 m | 1.37 mm I.D. × 1.6 m |
| NJ9226E - NJ9226P - NJ7225F | 50 Hz | 1.63 mm I.D. × 2.9 m | 1.63 mm I.D. × 1.7 m |
| | 60 Hz | 1.63 mm I.D. × 2.5 m | 1.90 mm I.D. × 1.9 m |
| NJ7228F - NJ7228P - NJ7228E | 50 Hz | 1.63 mm I.D. × 2.4 m | 1.90 mm I.D. × 1.9 m |
| | 60 Hz | 1.90 mm I.D. × 2.5 m | 2.16 mm I.D. × 2.0 m |
| NJ9232E - NJ9232P - NJ7231F NJ7231P | 50 Hz | 1.90 mm I.D. × 2.8 m | 2.16 mm I.D. × 2.2 m |
| | 60 Hz | 1.90 mm I.D. × 2.15 m | 2.16 mm I.D. × 1.7 m |
| NJ9238E - NJ9238P NJ7238E - NJ7238P | 50 Hz | 2.16 mm I.D. × 2.6 m | 2 × 1.63 mm I.D. × 1.8 m |
| | 60 Hz | 2.16 mm I.D. × 2.0 m | 2 × 2.16 mm I.D. × 2.5 m |
| NJ7240E - NJ7240P | 50 Hz | 2.16 mm I.D. × 2.3 m | 2 × 2.16 mm I.D. × 2.8 m |

PictureS Mbsm Dot Pro : www.mbsm.pro

R134a - HBP Applications

| COMPRESSOR | FREQUENCY | DIMENSION | |
|--------------------|-----------|-------------------------------------|-------------------------------------|
| | | (from -15°C to -5°C evap. temp.) | (from -5°C to +10°C evap. temp.) |
| T6213Z | 50 Hz | 1.37 mm I.D. × 3.5 m | 1.50 mm I.D. × 3.3 m |
| | 60 Hz | 1.37 mm I.D. × 3.1 m | 1.50 mm I.D. × 2.9 m |
| T6215Z - T6217Z | 50 Hz | 1.37 mm I.D. × 3.1 m | 1.50 mm I.D. × 2.9 m |
| | 60 Hz | 1.37 mm I.D. × 2.7 m | 1.50 mm I.D. × 2.5 m |
| NJ6220Z - NJ6220ZX | 50 Hz | 1.63 mm I.D. × 3.6 m | 1.78 mm I.D. × 3.3 m |
| | 60 Hz | 1.63 mm I.D. × 3.0 m | 1.78 mm I.D. × 2.75 m |
| NJ6226Z - NJ6226ZX | 50 Hz | 2 × 1.50 mm I.D. × 4.0 m | 2 × 1.63 mm I.D. × 3.0 m |
| | 60 Hz | 2 × 1.50 mm I.D. × 3.4 m | 2 × 1.63 mm I.D. × 2.5 m |

PictureS Mbsm Dot Pro : www.mbsm.pro

R 22 - Air Conditioning Applications

| COMPRESSOR | FREQUENCY | DIMENSION | |
|----------------------------|-----------|----------------------------|---|
| | | | |
| NE7213E | 50 Hz | 1.24 mm I.D. × 1.05 m | – |
| | 60 Hz | 1.24 mm I.D. × 1.0 m | – |
| NE7215E | 50 Hz | 1.24 mm I.D. × 1.0 m | – |
| | 60 Hz | 1.24 mm I.D. × 0.95 m | – |
| T7220E - T7220F | 50 Hz | 1.37 mm I.D. × 1.0 m | – |
| | 60 Hz | 1.37 mm I.D. × 0.95 m | – |
| T7223E - T7223F | 50 Hz | 1.5 mm I.D. × 1.05 m | – |
| | 60 Hz | 1.5 mm I.D. × 1.0 m | – |
| NJ7225E - NJ7225F | 50 Hz | 2.16 mm I.D. × 2.0 m | – |
| | 60 Hz | 2.16 mm I.D. × 1.8 m | – |
| NJ7228E - NJ7228F | 50 Hz | 2.16 mm I.D. × 1.9 m | – |
| | 60 Hz | 2.16 mm I.D. × 1.7 m | – |
| NJ7231E - NJ7231F -NJ7231P | 50 Hz | 2.16 mm I.D. × 1.6 m | – |
| | 60 Hz | 2.16 mm I.D. × 1.4 m | – |
| NJ7238E - NJ7238P | 50 Hz | 2 × 2.16 mm I.D. × 2.5 m | – |
| | 60 Hz | 2 × 2.16 mm I.D. × 2.3 m | – |
| | 50 Hz | 2 × 2.16 mm × I.D. × 2.3 m | – |

PictureS Mbsm Dot Pro : www.mbsm.pro

R134a - HBP Applications

| COMPRESSOR | FREQUENCY | DIMENSION | |
|--|-----------|-------------------------------------|-------------------------------------|
| | | (from –15°C to –5°C evap. temp.) | (from –5°C to +10°C evap. temp.) |
| NB5125Z | 50 Hz | 0.78 mm I.D. × 2.5 m | 0.91 mm I.D. × 2.4 m |
| | 60 Hz | 0.78 mm I.D. × 2.1 m | 0.91 mm I.D. × 2.0 m |
| NB5128Z | 50 Hz | 0.78 mm I.D. × 2.4 m | 0.91 mm I.D. × 2.3 m |
| | 60 Hz | 0.78 mm I.D. × 2.0 m | 0.91 mm I.D. × 1.9 m |
| NB5132Z - NB6132Z | 50 Hz | 0.78 mm I.D. × 2.3 m | 0.91 mm I.D. × 2.2 m |
| | 60 Hz | 0.78 mm I.D. × 1.9 m | 0.91 mm I.D. × 1.8 m |
| NB5144Z - NB6144Z NEK5144Z - EMT6144Z | 50 Hz | 0.91 mm I.D. × 2.9 m | 1.06 mm I.D. × 2.7 m |
| | 60 Hz | 0.91 mm I.D. × 2.4 m | 1.06 mm I.D. × 2.3 m |
| NE5160Z - NE6160Z NEK6160Z - EMT6160Z | 50 Hz | 0.91 mm I.D. × 2.4 m | 1.06 mm I.D. × 2.5 m |
| | 60 Hz | 0.91 mm I.D. × 2.1 m | 1.06 mm I.D. × 2.2 m |
| NE5170Z - NE6170Z NEK5170Z - NEK6170Z EMT6170Z | 50 Hz | 1.06 mm I.D. × 3.2 m | 1.27 mm I.D. × 3.3 m |
| | 60 Hz | 1.06 mm I.D. × 2.65 m | 1.27 mm I.D. × 2.75 m |
| NE5187Z - NE6187Z NEK6187Z | 50 Hz | 1.24 mm I.D. × 4.0 m | 1.37 mm I.D. × 3.3 m |
| | 60 Hz | 1.24 mm I.D. × 3.4 m | 1.37 mm I.D. × 2.9 m |
| NE6210Z - NEK6210Z | 60 Hz | 1.37 mm I.D. × 3.5 m | 1.50 mm I.D. × 3.3 m |
| NEK6212Z | 60 Hz | 1.37 mm I.D. × 3.3 m | 1.50 mm I.D. × 3.1 m |
| | 50 Hz | 1.37 mm I.D. × 3.5 m | 1.50 mm I.D. × 3.3 m |

PictureS Mbsm Dot Pro : www.mbsm.pro

R22 - MBP/HBP Applications

| COMPRESSOR | FREQUENCY | DIMENSION | |
|-------------------|-----------|-------------------------------------|-------------------------------------|
| | | (from -20°C to -5°C evap. temp.) | (from -5°C to +10°C evap. temp.) |
| NB6144E | 50 Hz | 1.06 mm I.D. × 3.5 m | 1.06 mm I.D. × 3.0 m |
| | 60 Hz | 1.06 mm I.D. × 3.0 m | 1.06 mm I.D. × 2.6 m |
| NB6152E | 50 Hz | 1.06 mm I.D. × 3.3 m | 1.06 mm I.D. × 2.7 m |
| | 60 Hz | 1.06 mm I.D. × 2.8 m | 1.06 mm I.D. × 2.3 m |
| NB5165E - NB6152E | 50 Hz | 1.06 mm I.D. × 3.0 m | 1.20 mm I.D. × 3.5 m |
| | 60 Hz | 1.06 mm I.D. × 2.6 m | 1.20 mm I.D. × 3.0 m |
| NE5181E - NE6181E | 50 Hz | 1.20 mm I.D. × 3.2 m | 1.20 mm I.D. × 2.5 m |
| | 60 Hz | 1.20 mm I.D. × 2.75 m | 1.20 mm I.D. × 2.2 m |
| NE5195E - NE6195E | 60 Hz | 1.20 mm I.D. × 3.0 m | 1.27 mm I.D. × 2.8 m |
| NE5195E - NE6210E | 50 Hz | 1.20 mm I.D. × 2.9 m | 1.27 mm I.D. × 2.6 m |
| | 60 Hz | 1.20 mm I.D. × 2.5 m | 1.27 mm I.D. × 2.3 m |
| NE6212E - NE7212E | 50 Hz | 1.27 mm I.D. × 2.7 m | 1.27 mm I.D. × 1.9 m |

PictureS Mbsm Dot Pro : www.mbsm.pro

R22 - LBP Applications

| COMPRESSOR | FREQUENCY | DIMENSION | |
|------------|-----------|-------------------------------------|---|
| | | (from -30°C to -5°C evap. temp.) | - |
| NE2125E | 50 Hz | 0.91 mm I.D. × 3.2 m | - |
| | 60 Hz | 0.91 mm I.D. × 2.85 m | - |
| NE2134E | 50 Hz | 0.91 mm I.D. × 2.8 m | - |
| | 60 Hz | 0.91 mm I.D. × 2.5 m | - |
| T2140E | 50 Hz | 0.91 mm I.D. × 2.6 m | - |
| | 60 Hz | 0.91 mm I.D. × 2.3 m | - |
| T2155E | 50 Hz | 1.20 mm I.D. × 3.9 m | - |
| | 60 Hz | 1.20 mm I.D. × 3.5 m | - |
| T2168E | 50 Hz | 1.20 mm I.D. × 3.3 m | - |
| | 60 Hz | 1.20 mm I.D. × 2.8 m | - |
| NJ2178E | 50 Hz | 1.20 mm I.D. × 3.0 m | - |

PictureS Mbsm Dot Pro : www.mbsm.pro

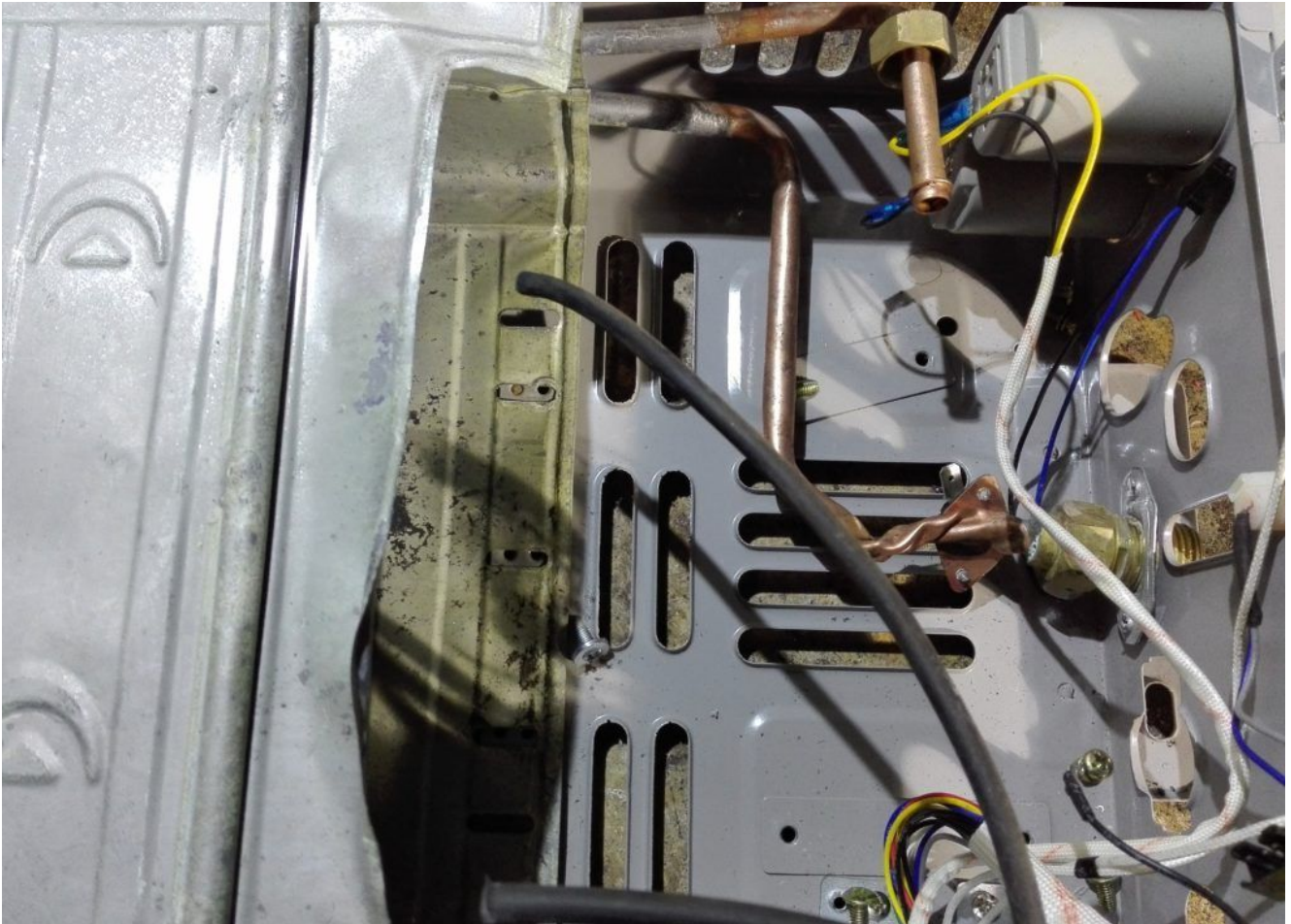
Choice Of Capillary , EMBARACO ASPERA

Erreur Grave montage chauffe bain Électronique

written by Lilianne | 22 April 2020

خطأ كبير في تركيب سخان الحمام

Serious bath heater mounting error





Picture5 Mbsm Dot Pro : www.mbsm.pro

-
-
-
-
-
-
-

Erreur de maintenance chauffe eau solaire

written by Lilianne | 22 April 2020

خطأ صيانة سخان المياه بالطاقة الشمسية

Solar water heater maintenance error



Cosse et Fiche plat

written by Lilianne | 22 April 2020

On trouve également sur le marché des **cosse**s pour batterie qui diffèrent selon leur surface de contact avec la batterie. Dans cette catégorie d'accessoires de connexion, on peut trouver des boîtes de dérivation, du ruban adhésif ou des bornes et des dominos.



Core Mécanique du chauffe-eau Électronique 10 litre

written by Lilianne | 22 April 2020



Core Mécanique du chauffe-eau Électronique 10 litre

COMPRESSEUR ZEL , 200w ,HDL200A, R600a, LBP ,1/4 hp

written by Lilianne | 22 April 2020



**GML70G,
GML90G,
GML125G,
HMM70A,
HMM90A,
HML125AT,
GML140AT
GML200AT,
GTH88AA,
HML140AT,
HML200A,
HKD14AA,
GML125G,**

GTH88AA,

**GDL145D,
GDL175D,
GML140A,
GML160A,
GML180A,
GML200A,
GML145D,
GML175D,
GPL175D*,
GXL175D,
GXL200D,**



Mbsm_dot_pro_private_PDF_catalog_zelTélécharger
COMPRESSEUR ZEL HML170A AU R600A LBP 1/6HP 9.5CM3



**WHIRLPOOL , COMPRESSEUR R600
, 1/8 HP , HKK80AA, LBP
Compressor, Top Efficiency ,**

220-240V 50Hz

written by Lilianne | 22 April 2020



WHIRLPOOL , COMPRESSEUR R600 ,1/8 HP , HKK80AA



Samsung SD162H-L1U2 Compressor, Rscr, 1/5 Hp, 6.99Cc, MANUFACTURERS, FACTORY, SUPPLIERS FROM CHINA

written by Lilianne | 22 April 2020



HP 1/5 **HP** Samsung SD162C-L1U2

2. Function Specifications Temp Range □ 32□ ~ 40□ Capacity
Cubic Feet 7 Climate Class N Max Ambient Temp □ 89.6□ Min
Ambient Temp □ 59□ Castors 5" 4EA Shelves 2EA Doors 1EA
Exterior Finish Stainless Steel Inte ...



Mbsm_dot_pro_private_PDF_Sd162h-l1uaTélécharger

Mbsm_dot_pro_private_PDF_compressor-catalogue-2015Télécharger

