

# Compressor, LG, GK113P, R410A, 220-240V, 50Hz, 9600 Btu / h, capacitor 35 uF, 1Piston

written by Lilianne | 8 December 2021

Refrigerant	Type	Frequency	Voltage	Series	Model	Cooling	Capacity	Input	EER	COP	Test Condition
Btu/hr	Watts	Watts	Btu/W.hr	W/W							
R410A	1piston	50Hz	1 $\Phi$ , 220/240V	GA	GA066P	5,270	1,544	555	9.5	2.78	ASHRAE
GA080P	6,550	1,919	668	9.81	2.87	ASHRAE					
GA086P	7,050	2,066	735	9.59	2.81	ASHRAE					
GAB	GAB040P	3,130	917	340	9.2	2.7	ASHRAE				
GAB042P	3,410	999	355	9.6	2.81	ASHRAE					
GAB048P	3,985	1,168	403	9.9	2.9	ASHRAE					
GAB072P	5,950	1,744	590	10.08	2.95	ASHRAE					
GK	GK086P	6,900	2,022	726	9.5	2.79	ASHRAE				
GK094P	7,700	2,256	794	9.7	2.84	ASHRAE					
GK102P	8,250	2,418	841	9.81	2.87	ASHRAE					
GK113P	9,000	2,637	914	9.85	2.89	ASHRAE					
GK120P	9,700	2,842	1,010	9.6	2.81	ASHRAE					
GK141P	11,350	3,326	1,170	9.7	2.84	ASHRAE					
GK151P	12,200	3,575	1,245	9.8	2.87	ASHRAE					
GKS	GKS094P	7,700	2,256	755	10.2	2.99	ASHRAE				
GKS108P	8,700	2,549	838	10.38	3.04	ASHRAE					
GKS113P	8,750	2,564	920	9.51	2.79	ASHRAE					
GKS134P	10,900	3,194	1,100	9.91	2.9	ASHRAE					
GKS141P	11,500	3,370	1,116	10.3	3.02	ASHRAE					
GKS151P	12,230	3,584	1,245	9.82	2.88	ASHRAE					
GJ	GJ176P	14,400	4,220	1,485	9.7	2.84	ASHRAE				
GJ196P	16,500	4,835	1,705	9.68	2.84	ASHRAE					
GJ208P	17,500	5,128	1,750	10	2.93	ASHRAE					
GJ222P	18,500	5,421	1,867	9.91	2.9	ASHRAE					
GJ230P	19,100	5,597	1,949	9.8	2.87	ASHRAE					



Private Picture Copyright: [WWW.MBSM.PRO](http://WWW.MBSM.PRO)

Mbsm\_dot\_pro\_private\_PDF\_gk113pTélécharger

---

# **Compressor, LX110LQJG, Refrigeration freezer, KF- P8903HLP, 1/3HP, 260W, R134A, 180G, Refrigerator Amerercaïn**

written by Lilianne | 8 December 2021

1 Reciprocating & Linear Compressor Compressor Technology for Refrigerator

2 01 LG Compressor Model Variety In order to offer you a various product portfolio of refrigerator compressor, our range covers constant and inverter of Reciprocating and Linear compressor with low pressure as well as high pressure. It enables to provide you with full support in all application of your needs. Customer Support LG compressors promise to deliver a satisfaction level for all your business stage from research, development to the spec-in that exceeds our customers expectations, and strives to provide the highest value to our customers through a fast, accurate and differentiated service & solution as your business partner. Technology LG compressors are continuously evolving group of high-precision machining and assembly technologies from accumulated techniques for generating sustainable world best compressor. Especially we are enabling to give our customers technical support in order to provide best performance compressor through design mechanism and produce key technology of compressor, inverter motor and drive that makes you to achieve optimized product. Quality With the product quality and safety evaluation system that performs basic quality and safety evaluation for products at every production stage. Under the quality gate system, all our products undergo a safety check at each quality gate based on a checklist, preventing shipments of products with quality or safety issues. We also have achieved recognition our quality and

sustainability from Europe, North America, China and Japan.  
Why LG Compressor? LG Compressor 01

3 02 LG Compressor LG Compressor 03 Brief History & Factory  
Milestones & Production Sites China Qinhuangdao (Casting)  
Tianjin (Rotary, Scroll) Nanjing ( ) Taizhou (Reciprocating) 13  
Production Refrigerator Compressor Production Air-conditioner  
Compressor Production Compressor Division Compressor Sales 100  
Million Units Establishment of C&M Business Unit 2011 Korea  
(HQ) Changwon (Reciprocating, Linear, Rotary, Scroll, ) India  
Noida (Reciprocating) Thailand Rayong (Rotary)

4 04 LG Compressor LG Compressor 05 Contents Why LG  
Compressor? Brief History & Factory Reciprocating Compressor –  
Product Range – Nomenclature – Specification I Constant speed  
– Specification I Inverter – Specification I Controller –  
Attached / Detached Controller – Mounting – Packing &  
Container Stuffing Quantity Linear Compressor – Product Range  
– Nomenclature – Specification – Wiring Diagram – Accessory  
Part – Packing & Container Stuffing Quantity

5 08 LG Reciprocating Compressor LG Reciprocating Compressor  
09 Nomenclature Product type B : BLDC C : Constant Speed F :  
Linear Size C : Compact L : Large M : Medium S : Small  
Generation code (A-Z) B M A 098 N A M V Operating type Rated  
voltage & frequency Code Voltage Hz Code Voltage Hz A /60 Q  
110~ B 50/60 R 110~ C D 60 E ~ S T Code Voltage G RSIR M RSCR  
F CSIR H CSR K RSIR N RSCR P CSIR R CSR V Inverter 200~ ~ F J  
60 U 115~ K M ~240 50/60 L N 115~127 50/60 P Improvement order  
A, B, C : Cu Wire H, J : Al Wire R134a TS Capacity EER COP  
TS22LHEG RSIR ~240/ ASHRAE TS22LHAG RSIR 110/ ASHRAE TS24LATG  
RSIR ~240/ ASHRAE TS24LJJG RSIR / ASHRAE TS24LHJG RSIR /  
ASHRAE TS24LAAG RSIR 110/ ASHRAE TS24LHAG RSIR 110/ ASHRAE  
TS24LHTG RSIR ~240/ ASHRAE TS22LHAG RSIR 110/ ASHRAE TS22LHDG  
RSIR / ASHRAE TS22LHCG RSIR 115/ ASHRAE TS24LADG RSIR / ASHRAE  
TS24LATG RSIR / ASHRAE TS24LAAG RSIR 100/ ASHRAE TS24LHAG RSIR  
110/ ASHRAE TS24LHUG RSIR 115~127/ ASHRAE TS24LAFG RSIR 127/  
ASHRAE TS24LBDM RSCR / ASHRAE TS24LACG RSIR 115/ ASHRAE

TS24LHDG RSIR / ASHRAE TS24LHTG RSIR / ASHRAE Note 2 :  
condition Evaporating temperature Condensing temperature  
Ambient temperature TS Capacity Displacement (ex :  
098=9.8cc/rev) Refrigerants L : R134a H : R134a HBP N : R600a

6 10 LG Reciprocating Compressor LG Reciprocating Compressor  
11 R134a NS Capacity EER COP NS24LBEG RSIR ~240/ ASHRAE 157  
NS24LABG RSIR / ASHRAE 147 NS24LAEG RSIR ~240/ ASHRAE 147  
NS24LABG RSIR / ASHRAE 147 NS24LBCG RSIR 115/ ASHRAE 157  
NS24LBCM RSCR 115/ ASHRAE 157 NS24LADG RSIR / ASHRAE 147  
NS24LACG RSIR 115/ ASHRAE 147 NS30LABG RSIR / ASHRAE 147  
NSA24LACG RSIR 115/ ASHRAE 147 NS30LAEG RSIR ~240/ ASHRAE 147  
NS30LABG RSIR / ASHRAE 147 NS36LABG RSIR / ASHRAE 157 NS30LACG  
RSIR 115/ ASHRAE 147 NS30LACM RSCR 115/ ASHRAE 147 NS36LAEG  
RSIR ~240/ ASHRAE 157 NSA30LACG RSIR 115/ ASHRAE 147 NS36LACG  
RSIR 115/ ASHRAE 157 NS36LADG RSIR / ASHRAE 157 NS36LADM RSCR  
/ ASHRAE 157 NS36LABG RSIR / ASHRAE 157 NSA36LACG RSIR 115/  
ASHRAE 157 R134a CMA Capacity EER COP CMA042LHJG RSIR / ASHRAE  
171 CMA042LHDM RSCR / ASHRAE 171 CMA042LHCG RSIR 115/ ASHRAE  
171 CMA042LHCM RSCR 115/ ASHRAE 171 CMA042LHUM RSCR 115~127/  
ASHRAE 171 CMA053LHEG RSIR ~240/ ASHRAE 171 CMA053LHEM RSCR  
~240/ ASHRAE 171 CMA057LHEM RSCR ~240/ ASHRAE 171 CMA057LHEG  
RSIR ~240/ ASHRAE 171 CMA057LAEM RSCR ~240/ ASHRAE 171  
CMA053LHDG RSIR / ASHRAE 171 CMA053LHCG RSIR 115/ ASHRAE 171  
CMA053LHCM RSCR 115/ ASHRAE 171 CMA062LHEG RSIR ~240/ ASHRAE  
171 CMA062LHEM RSCR ~240/ ASHRAE 171 CMA069LAEM RSCR ~240/  
ASHRAE 171 CMA069LBEM RSCR ~240/ ASHRAE 171 CMA069LHEM RSCR  
~240/ ASHRAE 171 CMA075LHDM RSCR / ASHRAE 171 Note 2 :  
condition Evaporating temperature Condensing temperature  
Ambient temperature Note 2 : condition Evaporating temperature  
Condensing temperature Ambient temperature NS CMA

7 12 LG Reciprocating Compressor LG Reciprocating Compressor  
13 R134a MA Capacity EER COP MA42LPJG RSIR / ASHRAE 172  
MA42LMJM RSCR / ASHRAE 172 MA42LMJG RSIR / ASHRAE 172 MA42LHJM  
RSCR / ASHRAE 172 MA45LDJG RSIR / ASHRAE 172 MA45LCJG RSIR /  
ASHRAE 172 MA45LJJM RSCR / ASHRAE 172 MA45LHJM RSCR / ASHRAE

172 MA53LABM RSCR / ASHRAE 172 MA53LATG RSIR ~240/ ASHRAE 172  
MA53LAJM RSCR / ASHRAE 172 MA53LJJG RSIR / ASHRAE 172 MA53LBJG  
RSIR / ASHRAE 172 MA53LAJG RSIR / ASHRAE 172 MA53LAEG(AL) RSIR  
~240/ ASHRAE 180 MA53LAEM(AL) RSCR ~240/ ASHRAE 180 MA57LBJG  
RSIR / ASHRAE 172 MA57LABM RSCR / ASHRAE 180 MA57LAEG RSIR  
~240/ ASHRAE 172 MA57LAEM(AL) RSCR ~240/ ASHRAE 180  
MA57LBEG(AL) RSIR ~240/ ASHRAE 180 MA57LBJG RSIR / ASHRAE 177  
MA57LJJG RSIR / ASHRAE 177 MA53LHEM RSCR ~240/ ASHRAE 172  
MA57LDJM RSCR / ASHRAE 177 MA53LBCG RSIR 115/ ASHRAE 172  
MA53LBCM RSCR 115/ ASHRAE 172 MA62LCEG RSIR ~240/ ASHRAE 180  
MA62LCEM RSCR ~240/ ASHRAE 180 MA62LDEG RSIR ~240/ ASHRAE 172  
MA53LAUG RSIR 115~127/ ASHRAE 172 MA62LBJG RSIR / ASHRAE 177  
MA62LJJG RSIR / ASHRAE 177 MA62LDJM RSCR / ASHRAE 177 MA62LBEG  
RSIR ~240/ ASHRAE 177 MA62LCEG RSIR ~240/ ASHRAE 177 MA53LADG  
RSIR / ASHRAE 172 MA53LADM RSCR / ASHRAE 172 MA53LCCM RSCR  
115/ ASHRAE 172 MA53LABM RSCR / ASHRAE 172 MA69LKEM RSCR ~240/  
ASHRAE 177 MA69LJEG RSIR ~240/ ASHRAE 177 MA69LJEP CSIR ~240/  
ASHRAE 177 MA69LHEM RSCR ~240/ ASHRAE 177 MA69LHEG RSIR ~240/  
ASHRAE 177 R134a MA / MC MA MC LQ Capacity EER COP MA69LHEP  
CSIR ~240/ ASHRAE 177 MA57LADM RSCR / ASHRAE 180 MA57LABM RSCR  
/ ASHRAE 180 MA69LDEG RSIR ~240/ ASHRAE 172 MA69LCEG RSIR  
~240/ ASHRAE 180 MA69LCEM RSCR ~240/ ASHRAE 180 MA69LAEM RSCR  
~240/ ASHRAE 177 MA72LBJG RSIR / ASHRAE 177 MA72LHEM RSCR  
~240/ ASHRAE 177 MA72LKEM RSCR ~240/ ASHRAE 177 MA72LBEM RSCR  
~240/ ASHRAE 177 MA72LJEP CSIR ~240/ ASHRAE 177 MA72LJEG RSIR  
~240/ ASHRAE 177 MA72LHEG RSIR ~240/ ASHRAE 177 MA88LAEP CSIR  
~240/ ASHRAE 177 MA98LAEM RSCR ~240/ ASHRAE 182 MC53LBEM RSCR  
~240/ ASHRAE 172 MC57LAEM RSCR ~240/ ASHRAE 177 MC57LBEM RSCR  
~240/ ASHRAE 177 MA57LBJM RSCR / ASHRAE 177 LQ75LAEM RSCR  
~240/ ASHRAE 203 LQ86LAEM RSCR ~240/ ASHRAE 203 Remark  
LQ69LAUM RSCR 115~127/ ASHRAE 203 E-PTC LQ69LAUM RSCR 115~127/  
ASHRAE 203 LQ69LAUH RSCR 115~127/ ASHRAE 203 E-PTC LQ69LADM  
RSCR / ASHRAE 203 LQ75LAUM RSCR 115~127/ ASHRAE 203 E-PTC  
LQ100LAJH CSR / ASHRAE 203 LQ86LADM RSCR / ASHRAE 203 Note 2 :  
condition Evaporating temperature Condensing temperature  
Ambient temperature LQ

8 14 LG Reciprocating Compressor LG Reciprocating Compressor  
15 R134a LX Capacity EER COP LX67LABM RSCR / ASHRAE 200  
LX67LHBM RSCR / ASHRAE 203 LX72LATG RSIR ~240/ ASHRAE 200  
LX72LBEG RSIR ~240/ ASHRAE 200 LX72LAAM RSCR 110/ ASHRAE 200  
LX72LATF CSIR ~240/ ASHRAE 200 LX72LATH CSR ~240/ ASHRAE 200  
LX72LAEM RSCR ~240/ ASHRAE 200 LX72LHJH CSR / ASHRAE 203  
LX72LHJM RSCR / ASHRAE 203 LX72LHJF CSIR / ASHRAE 203 LX67LAQG  
RSIR 100~115/ ASHRAE 200 LX86LABM RSCR / ASHRAE 203 LX86LBEG  
RSIR ~240/ ASHRAE 200 LX86LBEF CSIR ~240/ ASHRAE 200 LX86LCEG  
RSIR ~240/ ASHRAE 203 LX86LHEM RSCR ~240/ ASHRAE 203 LX86LHJF  
CSIR / ASHRAE 203 LX67LABM RSCR / ASHRAE 200 LX67LAFM RSCR  
127/ ASHRAE 200 LX67LHBM RSCR / ASHRAE 203 LX86LPBP CSIR /  
ASHRAE 203 LX86LAEG RSIR ~240/ ASHRAE 203 LX72LATG RSIR /  
ASHRAE 200 LX72LBQG RSIR 100~115/ ASHRAE 200 LX72LAAM RSCR  
110/ ASHRAE 200 LX72LATF CSIR / ASHRAE 200 LX72LATH CSR /  
ASHRAE 200 LX72LHQF CSIR 100~115/ ASHRAE 203 LX95LAAH CSR 110/  
ASHRAE 203 LX95LABH CSR / ASHRAE 203 LX86LACM RSCR 115/ ASHRAE  
203 LX86LAQM RSCR 100~115/ ASHRAE 203 LX86LPBP CSIR / ASHRAE  
203 LX86LADM RSCR / ASHRAE 203 LX86LABM RSCR / ASHRAE 203  
LX86LPDP CSIR / ASHRAE 200 LX110LAJH CSR /50 2 1, ASHRAE 203  
LX110LAJM RSCR /50 2 1, ASHRAE 203 LX110LAEH CSR ~240/50 2 1,  
ASHRAE 203 LX110LAEM RSCR ~240/50 2 1, ASHRAE 203 LX R134a LX  
1 Capacity EER COP LX110LAAH CSR 110/50 2 1, ASHRAE 203  
LX110LQJG RSIR /50 2 1, ASHRAE 200 LX110LHJH CSR /50 2 1,  
ASHRAE 203 LX110LAJM RSCR / , ASHRAE 203 LX95LAAH CSR 110/ ,  
ASHRAE 203 LX95LADH CSR / , ASHRAE 203 LX95LABH CSR / , ASHRAE  
203 LX95LBQH CSR 100~115/ , ASHRAE 203 LX95LAFH CSR 127/ ,  
ASHRAE 203 LX95LAQH CSR 100~115/ , ASHRAE 203 LX110LAAH CSR  
110/ , ASHRAE 203 LX110LPDP CSIR / , ASHRAE 203 LX125LAJM RSCR  
/ , ASHRAE 203 Note 2 : condition Evaporating temperature  
Condensing temperature Ambient temperature

9 16 LG Reciprocating Compressor LG Reciprocating Compressor  
17 R600a NS CSA Capacity EER COP NS36NAAG RSIR 110/ ASHRAE 157  
NS36NAAG RSIR 110/ ASHRAE 157 NSA43NACM RSCR 115/ ASHRAE 157  
NSA43NACG RSIR 115/ ASHRAE 157 CSA043NHEG RSIR ~240/ ASHRAE  
167 CSA043NHAG RSIR 110/ ASHRAE 167 CSA047NHEG RSIR ~240/

ASHRAE 167 CSA043NHAG RSIR 110/ ASHRAE 167 CSA053NHEG RSIR  
~240/ ASHRAE 167 CSA057NHEG RSIR ~240/ ASHRAE 167 CSA057NJEG  
RSIR ~240/ ASHRAE 157 CSA062NHAG RSIR 110/ ASHRAE 167  
CSA062NHEG RSIR ~240/ ASHRAE 167 CSA057NHCG RSIR 115/ ASHRAE  
167 CSA069NHAG RSIR 110/ ASHRAE 167 CSA069NHEG RSIR ~240/  
ASHRAE 167 CSA062NHAG RSIR 110/ ASHRAE 167 CSA075NJEG RSIR  
~240/ ASHRAE 157 CSA075NHEG RSIR ~240/ ASHRAE 167 CSA075NHEM  
RSCR ~240/ ASHRAE 167 CSA069NHCG RSIR 115/ ASHRAE 167  
CSA069NHAG RSIR 110/ ASHRAE 167 CSA075NHCG RSIR 115/ ASHRAE  
167 R600a CMA Capacity EER COP Remark CMA057NAAG RSIR 110/  
ASHRAE 171 CMA057NAEM RSCR ~240/ ASHRAE 171 CMA057NAEM RSCR  
~240/ ASHRAE 171 E-PTC CMA057NHEM RSCR ~240/ ASHRAE 171  
CMA057NHEM RSCR ~240/ ASHRAE 171 E-PTC CMA062NAEM RSCR ~240/  
ASHRAE 171 CMA062NAEM RSCR ~240/ ASHRAE 171 E-PTC CMA062NHEM  
RSCR ~240/ ASHRAE 171 CMA062NHEM RSCR ~240/ ASHRAE 171 E-PTC  
CMA057NAAG RSIR 110/ ASHRAE 171 CMA069NJEM RSCR ~240/ ASHRAE  
171 CMA069NAEM RSCR ~240/ ASHRAE 171 CMA069NAEM RSCR ~240/  
ASHRAE 171 E-PTC CMA069NHEM RSCR ~240/ ASHRAE 171 CMA069NHEM  
RSCR ~240/ ASHRAE 171 E-PTC CMA069NHAM RSCR 110/ ASHRAE 171  
CMA075NAEM RSCR ~240/ ASHRAE 171 CMA075NAEM RSCR ~240/ ASHRAE  
171 E-PTC CMA075NHEM RSCR ~240/ ASHRAE 171 CMA075NHEM RSCR  
~240/ ASHRAE 171 E-PTC CMA075NHAM RSCR 110/ ASHRAE 171  
CMA069NHAM RSCR 110/ ASHRAE 171 CMA082NHEM RSCR ~240/ ASHRAE  
171 CMA082NHEM RSCR ~240/ ASHRAE 171 E-PTC CMA082NJEG RSIR  
~240/ ASHRAE 171 CMA082NAEM RSCR ~240/ ASHRAE 171 Note 2 :  
condition Evaporating temperature Condensing temperature  
Ambient temperature Note 2 : condition Evaporating temperature  
Condensing temperature Ambient temperature NS / MSA / CSA CMA

10 18 LG Reciprocating Compressor LG Reciprocating Compressor  
19 R600a CMA Capacity EER COP Remark CMA082NAEM RSCR ~240/  
ASHRAE 171 E-PTC CMA089NHEM RSCR ~240/ ASHRAE 171 CMA089NHEM  
RSCR ~240/ ASHRAE 171 E-PTC CMA089NJEG RSIR ~240/ ASHRAE 171  
CMA075NHAM RSCR 110/ ASHRAE 171 CMA089NAEM RSCR ~240/ ASHRAE  
171 CMA089NAEM RSCR ~240/ ASHRAE 171 E-PTC CMA089NBEM RSCR  
~240/ ASHRAE 171 CMA098NJEM RSCR ~240/ ASHRAE 171 CMA098NAEM  
RSCR ~240/ ASHRAE 171 CMA098NAEM RSCR ~240/ ASHRAE 171 E-PTC



CMA098NJEG RSIR ~240/ ASHRAE 171 CMA098NHEM RSCR ~240/ ASHRAE 171 CMA098NHEM RSCR ~240/ ASHRAE 171 E-PTC CMA098NJEM RSCR ~240/ ASHRAE 171 CMA089NHDM RSCR / ASHRAE 171 CMA089NHDM RSCR / ASHRAE 171 E-PTC CMA110NAEM RSCR ~240/ ASHRAE 171 CMA110NAEM RSCR ~240/ ASHRAE 171 E-PTC CMA110NAEM RSCR ~240/ ASHRAE 171 CMA110NAEM RSCR ~240/ ASHRAE 171 CMA098NARM RSCR 110~127/ ASHRAE 171 CMA098NADM RSCR / ASHRAE 171 CMA121NAEM RSCR ~240/ ASHRAE 171 CMA121NAEM RSCR ~240/ ASHRAE 171 CMA110NADM RSCR / ASHRAE 171 R600a MB MQ LQ Capacity EER COP MB62NJEG RSIR ~240/ ASHRAE 172 MB82NAEM RSCR ~240/ ASHRAE 177 MB82NJEG RSIR ~240/ ASHRAE 177 MB82NJEM RSCR ~240/ ASHRAE 177 MB98NJEG RSIR ~240/ ASHRAE 177 MQ88NAEM RSCR ~240/ ASHRAE 180 MQ98NAJH CSR / ASHRAE 180 MQ98NAEM RSCR ~240/ ASHRAE 180 Remark LQ119NAEM RSCR ~240/ ASHRAE 203 E-PTC LQ119NAEM RSCR ~240/ ASHRAE 203 LQ125NAEM RSCR ~240/ ASHRAE 203 LQ140NAEM RSCR ~240/ ASHRAE 203 LQ119NAQM RSCR 100~115/ ASHRAE 203 LQ140NAEM RSCR ~240/ ASHRAE 203 LQ140NAEH CSR ~240/ ASHRAE 203 LQ140NAEM RSCR ~240/ ASHRAE 203 E-PTC Note 2 : condition Evaporating temperature Condensing temperature Ambient temperature Note 2 : condition Evaporating temperature Condensing temperature Ambient temperature CMA MB / MQ LQ

11 20 LG Reciprocating Compressor LG Reciprocating Compressor  
21 Application : HBP Application : HBP R134a CMA MA Capacity  
EER COP CMA042HHDM RSCR / , ASHRAE 161 CMA053HHDM RSCR / ,  
ASHRAE 161 CMA062HAEM RSCR ~240/ , ASHRAE 171 CMA062HHDM RSCR  
/ , ASHRAE 171 CMA075HAEM RSCR ~240/ , ASHRAE 171 CMA075HADM  
RSCR /60 0 2, ASHRAE 171 CMA089HADM RSCR / , ASHRAE 171  
MA42HJEP CSIR ~240/ , ASHRAE 172 MA53HJEF CSIR ~240/ , ASHRAE  
172 MA53HAEF CSIR ~240/ , ASHRAE 172 MA62HAEG RSIR ~240/ ,  
ASHRAE 177 MA62HAEF CSIR ~240/ , ASHRAE 177 MA72HAEP CSIR  
~240/ , ASHRAE 177 Note 2 : condition Evaporating temperature  
Condensing temperature Ambient temperature ASHRAE 7.2 C 54.4 C  
35 C R134a LX Capacity EER COP LX72HAEP CSIR ~240/ , ASHRAE  
203 LX72HAEG RSIR ~240/ , ASHRAE 203 LX72HPDP CSIR /60 0 2,  
ASHRAE 200 LX86HAEP CSIR ~240/ , ASHRAE 203 LX86HAEG RSIR  
~240/50 5 2, ASHRAE 203 LX86HPDP CSIR / , ASHRAE 200 LX110HAEP

CSIR ~240/ ,613 1, ASHRAE 203 LX110HAEM RSCR ~240/ ,772 1,  
ASHRAE 203 LX125HPJP CSIR / ,950 1, ASHRAE 203 LX110HPDP CSIR  
/ ,9 1, ASHRAE 200 LX110HACF CSIR 115/ ,129 1, ASHRAE 203  
LX125HPDP CSIR / ,764 1, ASHRAE 203 Note 2 : condition  
Evaporating temperature Condensing temperature Ambient  
temperature ASHRAE 7.2 C 54.4 C 35 C CMA MA LX

Mbsm\_dot\_pro\_private\_PDF\_LX110LQJGTélécharger



LG



ساید الجی LG



**REFRIGERATOR-FREEZER**  
**MODEL : KF-P8903HLP**

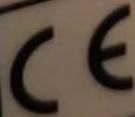
<b>RATING</b>	220V ~ 50Hz
<b>CLIMATE CLASS</b>	T
<b>RATED CURRENT</b>	1.73A
<b>FREEZING CAPACITY</b>	12.0kg/24Hr
<b>DEFROSTING INPUT</b>	260W
<b>RATED INPUT OF HEATER SHEATH</b>	260W
<b>STORAGE/GROSS VOL. TOTAL</b>	538 ℓ / 606 ℓ
<b>-FREEZER COMPARTMENT</b>	173 ℓ / 228 ℓ
<b>-REFRIGERATOR COMPARTMENT</b>	365 ℓ / 378 ℓ
<b>REFRIGERANT</b>	R134a 180g
<b>INSULATION BLOWING GAS</b>	CYCLOPENTANE
<b>DIMENSIONS</b>	894(W)x753(D)x1753(H)mm

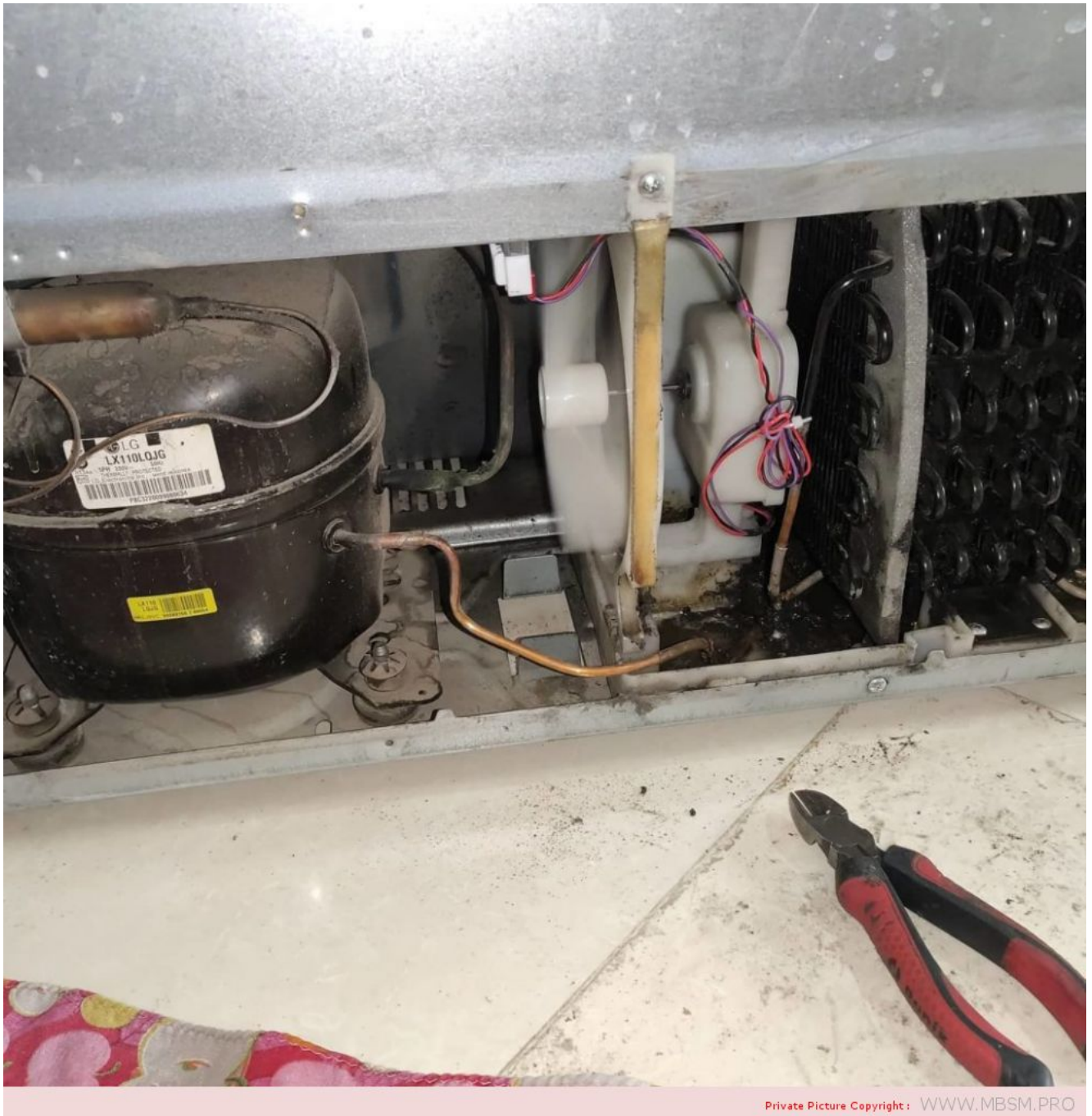
**MADE IN EUROPE**  
**SERIAL NO.**



910WRKG00805

TAB34634781





# تعویض پروانه فن





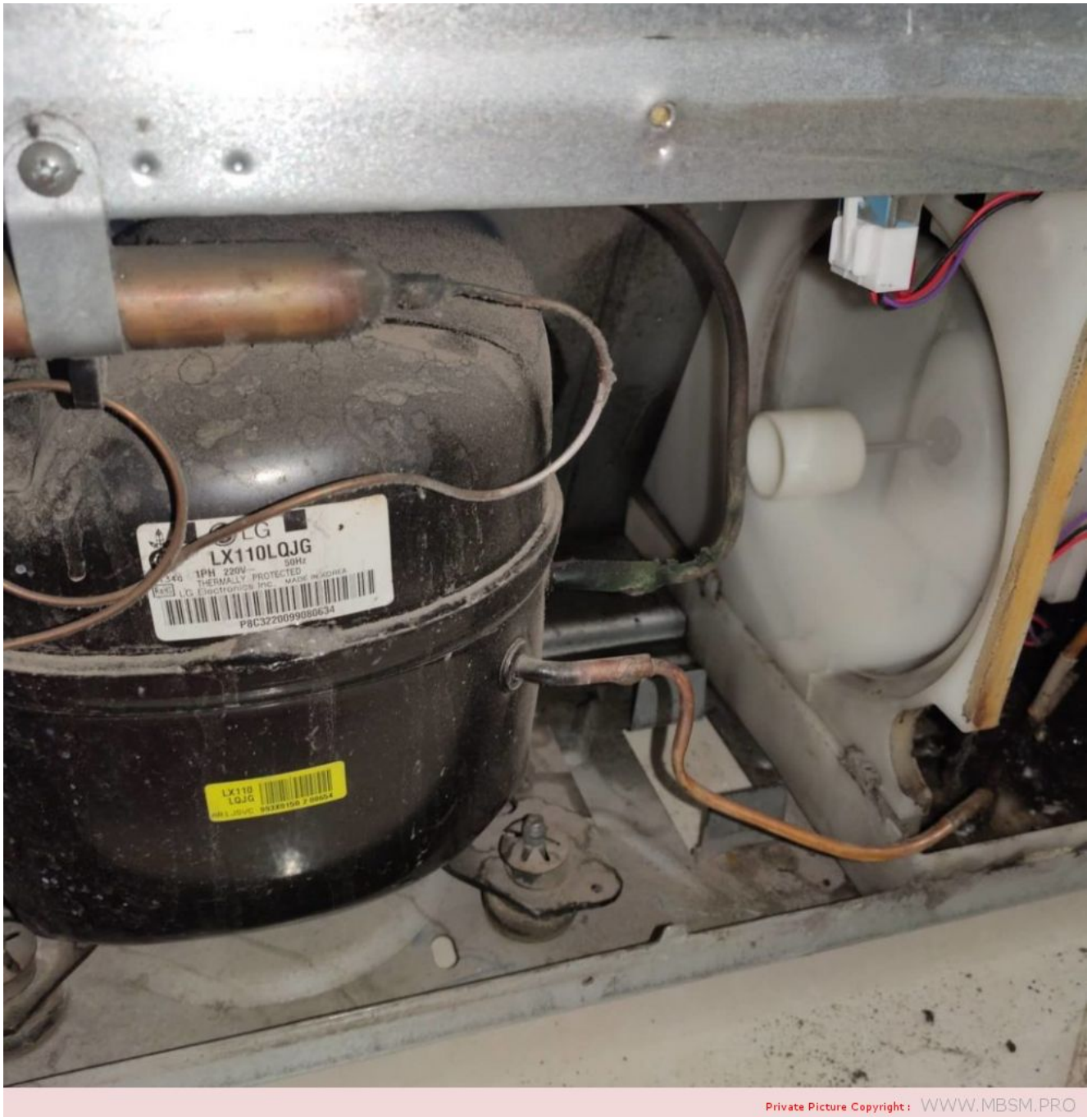
LG

**LX110LQJG**

R134a 1PH 220V ~ 50Hz  
THERMALLY PROTECTED  
RoHS LG Electronics Inc. MADE IN KOREA



P8C2220101310006



Private Picture Copyright: [WWW.MBSM.PRO](http://WWW.MBSM.PRO)

**compressor, R134a, AE4430Y-FZ,  
HERMÉTIQUE-TECUMSEH,**



# 220-240V 50Hz, 1/4HP++, HMBP, 1/3HP, 337W, AEZ4430Y

written by Lilianne | 8 December 2021

Compressor Tecumseh L` Unite AEZ4430Y/AE4430Y, HBP – R134a,  
220 – 240V, 50 Hz, 1 phase \*Warning – equivalent goods:  
AE4430Y will be delivered

---

Refrigerant:	R134a
Power range(W):	701 – 1000 W
Connecting size:	3/16"
Suction:	1/4"
Working area:	HBP
Design type:	Hermetic
Model series:	AE
Use with:	Expansion/Capillary
Power supply:	230 V
Oil type:	P0E
Engine type:	CSIR
Article condition:	New
Info:	Oil filled
Shipping weight:	12,20 Kg
Contents:	1,00 Pieces
Dimensions ( height ):	19,90 cm
customs tariff number:	84143081
Manufacturer:	Tecumseh L` Unite
Model:	AEZ4430Y
Stroke volume (cm3):	8,8

Performance condition:	+5 / +50 °C
Power (W):	768
Engine type:	CSIR
dbA @ 1m:	50
Note:	Fan cooling necessary
Equipment:	Start-Capacitor 50 uF / 250V
Oil quantity (l):	0,35
Compressor type:	Piston
Suction (inch):	1/4
Discharge (inch):	3/16
Alternative:	AE4430Y





Private Picture Copyright : [WWW.MBSM.PRO](http://WWW.MBSM.PRO)

f  
Mbsm\_dot\_pro\_private\_PDF\_AEZ4430YTélécharger  
Compressor Tecumseh L` Unite AE4430Y/AEZ4430Y, HBP – R134a,

220 – 240V, 50 Hz, 1 phase, discharge: 8.02 cm<sup>3</sup>, oil type: POE, oil charge: 280 cm<sup>3</sup>, electrical equipment CSIR, cooling power: 702 W at +5 / +50 °C, connection: suction: 1/4 inch, discharge: 3/16 inch, sound level: 56 dBA, start capacitor: 50uF/250V, expansion device: capillary or with expansion valve, cooling: forced, height: 200 mm, weight: 9.7 kg

							
CODE CD	TYPE	CODE CD	TYPE	CODE CD	TYPE	CODE CD	TYPE
FRD255	ML60TB	FRD696	FRD6CL	VD6063	NB6165GK	BTD2876	AEZ4430Z
FRD137	GP14TB	-	NL11MF	-	NE6210Z	FRD464	CAE4440Y
VD6043	GP12TB	FRD463	FRG11- NL10MF	SOMD1432	NE6187Z	-	-
FRD256	ML80TB	-	NL7MLX	-	NE6181GK	BTD2742	AEZ4440Z
MED2302	MP14TP	-	-	FRD158	T6217GK	FRD443	CAE9470Z
FRD257	ML90TB	-	-	-	NE6210GK	FRD442	CAE4450Z
PLD1803	GL45TB	FRD333	TL5G	-	BP6125H	CHD2658	THB4415Y
ISD1007	MR22FB	FRLD2643	SC21CL	SOMD17676	T2180GK	MED2261	CAJ2440Z
FRD665	MX18FB	FRD271	SC15CL	-	T2168GK	PLD1781	CAJ2428Z
ITD281	ML45TB	-	-	-	NB6144GK	FRD254	AEZ4425Z
VD6041	GL90TB	FRD128	FR10G- NL8.4MF	FRD130	NE6170Z	FRD501	AEZ4430Y
ITD284	MP12TB	-	SC10MLX	FRD144	NE9213GK	INF2116	CAE9460Z
-	GP12FB	FRD463	FR11G	FRD140	NE2121Z	-	AEZ2410Y
FRD695	MS34FB	-	-	FRD467	N2212GK	MARD1027	CAJ2464Z
-	MX16TB	-	SC15MLX	FRD156	T6220GK	VD6062	CAJ9480Z
SOMD17024	MX18TB	BTD2337	SC18MLX	FRD159	T6222GK	FRD444	CAJ9510Z
PLD1805	GL80TB	SOMD10205	FR7.5G- NL7.3MF	-	NE6160Z	FXD1075	AEZ4425Y
-	GL80PB	SOMD10205	FR7.5G- NL7.3MF	-	NE5160Z	-	-
GVD66397	MP12FB	ICD6006	SC12CL	FRLD2524	T2155GK	-	CAE2420Z
PLD1807	GL60TB	FRLD2624	NL6.1MF	IAD1434	NB6144Z	SOMD17679	THB4419Y- THB4422Y
VD6022	GL90AA	-	NLE9F	FRD142	NB2118Z	-	AEZ2380Y

							
CODE CD	TYPE	CODE CD	TYPE	CODE CD	TYPE	CODE CD	TYPE
-	GL40PB	-	-	FRD 135	BF5132H	-	-
MED2303	MX21FB	VD6019	SC18CL	FRD 164	T2178GK	PLD1782	CAJ2432Z
-	MS26FB	-	GS26CLX	FRD 154	NJ2192GK	PLD1784	CAJ2446Z
VD6040	L76TN	-	-	-	NE6181E	-	AEZ4440E
IAD 1475	ML80FB	IAD1448	FR8.5CL	FRD157	NE2125GK	ARD3991	AEZ2415Z
GVD66397	MP12FB	FRD475	SC10CL	FRD146	NE2134GK	-	CAE2417Z- CAE2420Z
GVD 19540	ML90FB	FRD475	SC10CL	IAD1426	NEK2134GK	-	CAE2417Z- CAE2420Z
ISD 1007	MR22FB	FRLD2643	SC21CL	IAD1383	T2180GJ	MED2261	CAJ2440Z
FRD257	ML90TB	-	-	FRD 145	NEK6210GK	FRD442	CAE4450Z
ITD284	MP12TB	-	SC12MLX	FRD 144	NE9213GK	INF2116	CAE9460Z
-	MR22TB	-	GS21MLX	FRD259	NJ9226GK	FRD476	CAJ9513Z
IAD 1384	MS26TB	-	GLS26MLX	IAD1461	NJ9232GK	ITD955	CAJ4517Z
FRD473	MS34TB	-	GLS34MLX	INF21730	NJ9238GK	FRD468	CAJ4519Z
ZDA2548	GX18TB	-	-	FRD131	T6213Z	FRD461	CAE4448Y
IAD 1475	ML80FB	IAD1448	FR8.5CL	IAD1432	NEK2125GK	-	AEZ2415Z
IAD1376	MP14FB	ICD6006	SC12CL	FRD162	NEK2150GK	-	CAE2420Z
ZDA2548	GX18TB	IAD 1366	SC18G	FRD 139	T6215Z	-	CAE4461Y
-	GL90PB	FRD 128	FR10G- NL8.4MF	-	NE5170Z	-	-
VD6032	L45TN	-	-	FRD179	NB6152E	-	-
VD6034	L57TN	-	-	-	NB6165E	FGD4617	AEZ4430E
VD6036	L88TN	-	-	-	NE6210E	FGD4604	CAE4450E- CAE9450T

**LOW BACK PRESSURE COMPRESSORS**

Type	COMPRESSOR MODELS	Nominal Power (H.P.)			REFRIGERATION CAPACITY AT 50HZ Rafed 54.5°C Cond Temp (Watts)								VOLTAGE
		t	Refrigerant	Displacement (cm <sup>3</sup> )	Evaporating Temperature								
					Oil charge (cm <sup>3</sup> )	-25°C	-15°C	-10°C	-5°C	0°C	+7.2°C	+15°C	
						t	t	t	t	t	t	t	
PISTON	THB4410Y	1/8	R134a	2.72	250	65.8	74	101	132	170	237	332	220-240V/1/50Hz
	THB4413Y	1/7	R134a	3.58	250	95.3	104	137	178	227	315	436	220-240V/1/50Hz
	THB4415Y	1/6	R134a	4.23	250	117	123	160	206	262	363	502	220-240V/1/50Hz
	THB4419Y	1/5	R134a	5.20	250	132	149	194	251	319	439	602	220-240V/1/50Hz
	THB4422Y	1/5	R134a	6.10	250	176	194	248	315	394	533	717	220-240V/1/50Hz
	AEZ4425Y	1/5	R134a	7.55	450	116	185	260	350	455	635	866	220-240V/1/50Hz
	AEZ4430Y	1/4	R134a	8.85	450	195	245	328	432	558	777	1065	220-240V/1/50Hz
	CAE4440Y	1/3	R134a	12.05	450	236	310	421	561	731	1026	1413	220-240V/1/50Hz
	CAE4448Y	3/7	R134a	14.15	450	344	403	530	693	892	1242	1705	220-240V/1/50Hz
	CAE4456Y	7/16	R134a	16.2	450	381	458	604	787	1009	1396	1904	220-240V/1/50Hz
	CAJ4452Y	3/7	R134a	15.2	887	226	370	528	724	957	1358	1879	220-240V/1/50Hz
	CAJ4461Y	1/2	R134a	18.3	887	370	475	642	856	1115	1569	2168	220-240V/1/50Hz 400V/3/50Hz
	CAJ4476Y	5/8	R134a	21.75	887	352	536	756	1030	1358	1926	2668	220-240V/1/50Hz
	CAJ4492Y	3/4	R134a	25.95	887	255	584	871	1215	1617	2295	3164	220-240V/1/50Hz 400V/3/50Hz
	CAJ4511Y	1	R134a	32.7	887	569	878	1227	1654	2160	3026	4148	220-240V/1/50Hz 400V/3/50Hz
	TAJ4461Y												
	FH4581Y	1-1/2	R134a	53.2	1330	208	1036	1650	2371	3200	4583	6333	220-240V/1/50Hz 400V/3/50Hz
	TFH4518Y												
TFH4525Y	2	R134a	74.25	1330	1155	1667	2343	3201	4329	6053	8442	220-240V/1/50Hz 400V/3/50Hz	
TFH4525Y													

Private Picture Copyright : WWW.MBSM.PRO

**Rotary Compressor**

**MEDIUM/HIGH BACK PRESSURE COMPRESSORS**

Type	COMPRESSOR MODELS	Nominal Power (H.P.)			REFRIGERATION CAPACITY AT 50HZ Rafed 54.5°C Cond Temp (Watts)						VOLTAGE	
		t	Refrigerant	Displacement (cm <sup>3</sup> )	Evaporating Temperature							
					Oil charge (cm <sup>3</sup> )	-10°C	-5°C	0°C	+7.2°C	+10°C		+15°C
						t	t	t	t	t		t
Rotary	RK 5450Y	1/2	R134a	11.4	414	609	754	935	1260	1407		230V/1/50/60Hz
	TRK 5450Y	1/2	R134a	11.4	414	609	754	935	1260	1407		440V/3/50Hz
	RK 5480Y	2/3	R134a	18.1	430	990	1232	1530	2056	2291		230V/1/50/60Hz
	TRK 5480Y	2/3	R134a	18.1	430	990	1232	1530	2056	2291		440V/3/50Hz
	RK 5512Y	1	R134a	24.4	444	1287	1598	1976	2641	2931		230V/1/50/60Hz
	TRK 5412Y	1	R134a	24.4	444	1287	1598	1976	2641	2931		440V/3/50Hz

Private Picture Copyright : WWW.MBSM.PRO

**MEDIUM/HIGH BACKPRESSURE COMPRESSORS**

TYPE	COMPRESSOR MODELS	Nominal Power (H.P.)		REFRIGERATION CAPACITY AT 50HZ Rafed @54.5°C Cond Temp (Watts)						VOLTAGE		
		τ	Refrigerant	Displacement (cm <sup>3</sup> )	Evaporating Temperature							
					Motor type	-15°C	-9.4°C	-3.9°C	+7.2°C		+10.0°C	+12.8°C
						τ	τ	τ	τ		τ	τ
PISTON	AE3414YS	1/6	R134a	4.49	RSIR	116	159	212	354	398	446	220-240V/1/50Hz
	AE3417YS	1/6	R134a	5.67	RSIR	148	203	270	451	507	568	220-240V/1/50Hz
	AE4425YS	1/5	R134a	7.57	CSIR	221	303	403	673	757	849	220-240V/1/50Hz
	AE4430YS	1/4	R134a	8.85	CSIR	262	358	477	796	896	1003	220-240V/1/50Hz
	AE4440YS	1/3	R134a	12.04	CSIR	346	474	631	1054	1186	1328	220-240V/1/50Hz
	AE4448YS	3/7	R134a	14.17	CSIR	404	553	736	1230	1383	1550	220-240V/1/50Hz

Private Picture Copyright: WWW.MBSM.PRO

**THE NEW TWO GENERATION BRAZIL COMPRESSORS**

TYPE	COMPRESSOR MODELS	Nominal Power (H.P.)		REFRIGERATION CAPACITY AT 50HZ Rafed @54.5°C Cond Temp (Watts)								VOLTAGE	
		τ	Refrigerant	Displacement (cm <sup>3</sup> )	Evaporating Temperature								
					-20°C	-15°C	-10°C	-5°C	0°C	+5°C	+10°C		+15°C
					τ	τ	τ	τ	τ	τ	τ		τ
PISTON	AE4425Y-FZ1A	1/5	R134a	6.69	160	237	312	390	479	583	709	863	220-240V/1/50Hz
	AE4430Y-FZ1A	1/4	R134a	8.02	239	270	352	450	566	702	861	1045	220-240V/1/50Hz
	AE4440Y-FZ1A	1/3	R134a	10.33	332	369	471	591	733	899	1093	1317	220-240V/1/50Hz
	AE4450Y-FZ1C	3/8	R134a	13.24	345	478	620	778	957	1163	1402	1680	220-240V/1/50Hz
	AE4456Y-FZ1C	1/2	R134a	14.51	479	534	682	854	1052	1282	1547	1853	220-240V/1/50Hz
	AE4460Y-FZ3C	1/2	R134a	15.09	435	561	712	890	1095	1330	1594	1889	220-240V/1/50Hz

Private Picture Copyright: WWW.MBSM.PRO

**MEDIUM/HIGH BACK PRESSURE COMPRESSORS**

TYPE	COMPRESSOR MODELS	Nominal Power (H.P.)		REFRIGERATION CAPACITY AT 50HZ Rafed @54.5°C Cond Temp (Watts)								VOLTAGE		
		τ	Refrigerant	Displacement (cm <sup>3</sup> )	Oil charge (cm <sup>3</sup> )	Evaporating Temperature								
						-15°C	-10°C	-5°C	0°C	+5°C	+10°C		+15°C	
						τ	τ	τ	τ	τ	τ		τ	
ROTARY	RGA/HGA4467Z	1/2	R404A	9.50	290	679	847	1047	1283	1557	1872	2231	220-240V/1/50Hz	
	BGA/HGA4480Z	2/3	R404A	11.50	290	825	1017	1252	1530	1851	2212	2613	220-240V/1/50Hz	
	RGA/HGA4492Z	3/4	R404A	12.50	290	905	1133	1398	1706	2060	2468	2932	220-240V/1/50Hz	
	RGA/HGA4512Z	1	R404A	16.10	290	1163	1438	1770	2160	2609	3118	3689	220-240V/1/50Hz	
	RGA/HGA4445Y	1/3	R134a	9.50	290	392	493	618	770	954	1173	1430	220-240V/1/50Hz	
	RGA/HGA4450Y	2/5	R134a	11.50	290	501	625	778	963	1184	1445	1749	220-240V/1/50Hz	
	RGA/HGA4460Y	1/2	R134a	12.70	290	537	677	844	1045	1287	1576	1920	220-240V/1/50Hz	
	RGA/HGA4576Y	2/3	R134a	16.10	290	696	870	1086	1349	1662	2030	2457	220-240V/1/50Hz	

Private Picture Copyright: WWW.MBSM.PRO



# **Embraco, Universal, EM45HHR, R134a, Refrigeration Compressor, Low, Medium & High Back Pressure, 1/8hp, Nominal Motor HP, For use with refrigerators, ice makers, frozen food cabinets, frozen food display cases, display windows, 115v**

written by Lilianne | 8 December 2021

Embraco Universal EM45HHR R134a Refrigeration Compressor. Low, Medium & High Back Pressure. 1/8 Nominal Motor HP. For use with refrigerators, ice makers, frozen food cabinets, frozen food display cases, display windows, etc.

Replaces Embraco EMI40HNR and EM45HNR and Tecumseh AEA3417YXA.

Motor: Resistive Start Inductive Run & Captive Start Inductive Run (RSIR/CSIR)

Evaporating Temperatures: -10°F to 45°F

## **Product Specifications**

BTU Capacity HBP:	1775
BTU Capacity LBP & MBP:	420
Horsepower (HP):	1/8
Locked Rotor Amps (LRA):	17.0
Motor Type:	RSIR/CSIR

Required Refrigerant :	R134a
Skill Level:	
Starting Torque:	Normal
Volts (V):	115

Mbsm\_dot\_pro\_private\_PDF\_EM45HHR-1Télécharger  
Mbsm\_dot\_pro\_private\_PDF\_EM45HHRTélécharger





GDM-06-LD BLK  
8947049







ture Copyright : WWW.MBSM.PRO

- ✘
- ✘
- ✘
- ✘
- ✘
- ✘
- ✘

---

# Approximate base metal temperature

written by Lilianne | 8 December 2021  
approximate base metal temperature

التمييز بين درجات حرارة المعدن خلال عملية التلحيم

#mbsmpro

- ✘

---

# Compressor, FLB075LBNA, LG-Original New Linear Refrigerator Compressor, LG-compressor, Inverter 0~220V 53Hz, R134a(165g), LSXC22386, LSXC22326, LSXC22336, 1/4HP

written by Lilianne | 8 December 2021

FLS075LANA is the new **compressor** model number It replaces these older **LG/Kenmore Elite compressor** versions: FC75LBNA  
FLA075LANA FLB075LANA **FLB075LBNA**

Compressor Fls075lana\_replacement A: Fla075lana, Flb075lana

Compressor, FLB075LBNA, LG-Original New Linear Refrigerator Compressor, LG-compressor, Inverter 0~220V 53Hz, R134a(165g), LSXC22386, LSXC22326, LSXC22336, 1/4HP

New version LG Compressor part # TCA38091801 & Software Jig TCA35911910

Compressor has a purple decal and red decal on top warning about the software update.

FLS075LANA is the new compressor model number

It replaces these older LG/Kenmore Elite compressor versions:

FC75LBNA

FLA075LANA

FLB075LANA

FLB075LBNA









SEARS BRANDS  
MANAGEMENT CORPORATION  
HOFFMAN ESTATES, IL 60179

HOUSEHOLD REFRIGERATOR/  
REFRIGÉRATEUR MENAGERE

**MODEL/MODÈLE :**  **795.73153.610**

RATING/CAPACITÉ NOMINALE **115V ~ 60Hz 2.9A**

REFRIGERANT/RÉFRIGÉRANT **R134a 5.11oz**

DEFROSTING INPUT / PUISSANCE ABSORBÉE EN DÉGIVRAGE **360W**

POWER INPUT OF DEFROST HEATER /  
PUISSANCE ABSORBÉE DE LA RÉSTANCE DE DÉGIVRAGE

FREEZER/CONGÉLATEUR **350W**

PRODUCTION DATE / DATE DE PRODUCTION **2016.04**

DIMENSIONS **35 3/4(W) x 36 1/4(D) x 70 1/4(H) inch**

DESIGN PRESSURES/ HIGH SIDE/ CÔTÉ SUPÉRIEUR **400PSI Ga**

PRESSION DE DESSIN LOW SIDE/ CÔTÉ INFÉRIEUR **140PSI Ga**

SER.No./NO.DE SÉRIE:

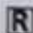
MADE IN KOREA  
FABRIQUÉ EN CORÉE



**604KR00971**



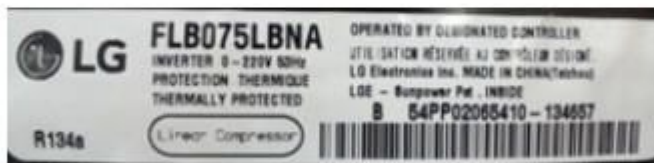
For SEARS REPAIR SERVICE  
CALL 1-844-553-6667  
AU CANADA POUR SERVICE EN  
FRANÇAIS 1-800-LE-FOYER<sup>SM</sup>  
24HOURS A DAY,  
7 DAYS A WEEK FOR SEARS  
REPAIR SERVICE  
LE SERVICE DE REPARATION  
SEARS CANADA  
VINGT-QUATRE HEURES PAR JOUR,  
SEPT JOURS PAR SEMAINE.

TAB37097603 

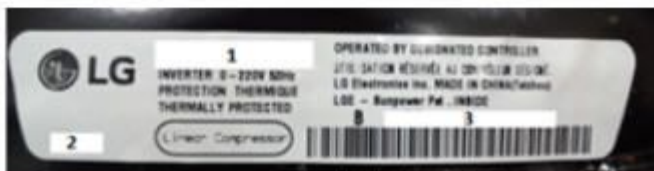




### Name Plate



Size : 90mm X 20mm



Private Picture Copyright : [WWW.MBSM.PRO](http://WWW.MBSM.PRO)

## Compressor Label

### 1. Compressor Model

**FLB075LBNA**

- **Series name** -----  
DLF/FA/FB
- **Displacement** -----  
ex)90=9.0 /stroke
- **Application Category** -----  
- L : LBP with R134a  
- H : HBP with R134a  
- N : LBP with R600a
- **Operating Type**  
A : A-Inverter  
E : E-Inverter
- **Rated Voltage & Frequency**  
- M : 220V 50/60Hz  
- N : 115V 50/60Hz
- **Efficiency version**  
A : 1<sup>st</sup> generation  
B : 2<sup>nd</sup> generation

### 2. Refrigerant

### 3. Serial Number

**00 00 9 2003 5 13 0012**

- Buyer Code -----
  - Model Code -----
  - Line -----
  - Year -----
  - Month -----
  - Date -----
  - Serial No. -----
- 1 : January    O : October  
~                N : November  
9 : September    D : December

Private Picture Copyright : [WWW.MBSM.PRO](http://WWW.MBSM.PRO)

Defrost	End	Auto	
	Evaporation	Forced method	
	Type of heat shield	Cyclo-Pentane	
F-Room	Fixed Shelf	3	
	Drawer	2	
R-Room	Fixed Shelf	4	
	Shelf(Movable, Folding)	-	
	Egg container	-	
Freezing cycle	Vegetable room	2	
	Compressor driving method	A Logic Inverter operation	
	Evaporation	Pin tube type	
	Condenser	Forced convection method	
	F-Room oil	Freol Alpha5 oil(175cc)	
	Type of refrigerant	<b>R134a(165g)</b>	
	Capillary tube	Φ 0.7/0.9	
Dryer (drying tube)	MOLECULAR SIEVE XH-9		
Electrical parts	Initial defrost	4~5 hours (vary depending on condition)	
	Defrost cycle	9~11 hours (vary depending on condition)	
	Rest time	3 Min	
	Defrost sensor	Returend to defrost function when reaching to 5°C	
	Temp.fuse (rated/ operation temperature)	250V / 72°C	
	Heater Sheath	AC 115V / 260W	
	Parts related with dewing prevention	Dispenser duct door heater	-
		R-Room home bar heater	120V / 6.5W
		F-Room home bar heater	-
		Dispenser heater	DC 12V / 2.5W
	Capacitor	Comp' Running	AC 450V / 20 μF
		l/maker geared motor Running	AC 250V / 14 μF

Private Picture Copyright : [WWW.MBSM.PRO](http://WWW.MBSM.PRO)

---

# Caj4492A, R12, Tecumseh, Refrigeration, Compressor, 3/4HP, Medium/High Back Pressure

written by Lilianne | 8 December 2021



Private Picture Copyright: [WWW.MBSM.PRO](http://WWW.MBSM.PRO)

Caj4492A, R12, Tecumseh, Refrigeration, Compressor, 3/4HP, Medium/High Back Pressure

---

**Danfoss, secop, refrigerator,  
compressor, SC15G, 104G8520,  
R134a, 3/8HP,  
1ph/220V-240/50HZ**

written by Lilianne | 8 December 2021



Private Picture Copyright: [WWW.MBSM.PRO](http://WWW.MBSM.PRO)

3/8HP Danfoss secop refrigerator compressor SC15G 104G8520 for R134a

**Main features:**



1. Adopt high efficient rotary compressor and Japan made motors,

save power 10% or above.

2. The horizontal designed series can save much space.

3. Optimized design can be tightly built inside the equipment,

which can save installation time and labor cost.

4. Widely used in freezing storage, cold room, automatic

vendor machine, cold tanks on the ship, etc. as well as in the home use, commercial, refrigerator,

refrigeration machine, dehumidifier,

low-temperature laboratory device and some special refrigeration equipment.

#### **Available models and details for secop compressor:**

Model	Gas	Qty/pallet	HP	Voltage	Code	Details
SC10C	R22	80	1/3	1ph/220V-240/50HZ	104L2516	MLBP HST
SC12C	R22	80	3/8	1ph/220-240V/50HZ	104L2674	MLBP HST
SC15CM	R22	80	1/2	1ph/220V-240V/50HZ	104L2848	MLBP HST
SC18CM	R22	80	5/8	1ph/220-240V/50HZ	104L2120	MLBP HST
SC10D	R22	80	3/8	1ph/220-240V/50HZ	104L2529	MHBP HST
SC12D	R22	80	1/2	1ph/220-240V/50HZ	104L2694	MHBP HST
SC15D	R22	80	5/8	1ph/220-240V/50HZ	104L2859	MHBP HST
SC10CL	R404A	80	1/3	1ph/220-240V/50HZ	104L2523	LMBP HST
SC12CL	R404A	80	3/8	1ph/220-240V/50HZ	104L2623	LMBP HST
SC15CL	R404a	80	1/2	1ph/220-240V/50HZ	104L2853	LMBP HST
SC18CL	R404a	80	5/8	1ph/220V-240V/50HZ	104L2123	LMBP HST

SC21CL	R404a	80	7/8	1ph/220-240V/50HZ	104L2322	LBP HST
SC10G	R134a	80	5/16	1ph/220-240V/50HZ	104G8000	LMHBP HST
SC12G	R134a	80	1/3	1ph/220-240V/50HZ	104G8240	LMHBP HST
<b>SC15G</b>	<b>R134a</b>	<b>80</b>	<b>3/8</b>	<b>1ph/220V-240V/50HZ</b>	<b>104G8520</b>	<b>LMHBP HST</b>
SC18G	R134a	80	1/2	1ph/220-240V/50HZ	104G8820	LMHBP HST
SC21G	R134a	80	5/8	1ph/220-240V/50HZ	104G8140	LMHBP HST



Private Picture Copyright : [WWW.MBSM.PRO](http://WWW.MBSM.PRO)

Mbsm\_dot\_pro\_private\_PDF\_sc15g\_104g8520\_r134a\_220v\_50hz\_60hz\_01-2013\_desd402k302Télécharger

---

**Compressor, 103U2954,  
Danfoss, fr10B, 103u, 2954,  
1/3 HP, lbp, r12, FR10B  
COMPRESSOR 220V,  
103U2954FR10B, FR11B  
Compressor R-12 3/8 HP 230V,  
fr21b Compressor R134a 3/4  
HP++/ 1 hp-, 230V, hbp++**

written by Lilianne | 8 December 2021



Compressor, 103U2954, Danfoss, fr10B, 103u, 2954, 1/4 HP, lbp, r12, FR10B COMPRESSOR 220V, 103U2954FR10B

---

**COMPRESSOR, DANFOSS, SECOP,  
HMK95AA, R600, 145W, 1/5CV,  
réfrigérateur , congélateur,  
LBP, Equivalent: EMBRACO  
NBM1114Y – NBM1116Y, DANFOSS  
NLE11KK – NL10K – NL11K –  
NLE15K, DANFOSS NLE11KK –  
NL10K – NL11K – NLE15K,  
DANFOSS NLE11KK – NL10K –  
NL11K – NLE15K, ELECTROLUX  
HP14AH – HP12AH, SECOP  
TLES8.7KK.3 – HMK95AA**

written by Lilianne | 8 December 2021



COMPRESSOR, DANFOSS, SECOP, HMK95AA, R600, 145W, 1/5CV,  
réfrigérateur , congélateur, LBP, Equivalent: EMBRACO NBM1114Y –  
NBM1116Y, DANFOSS NLE11KK – NL10K – NL11K – NLE15K, DANFOSS  
NLE11KK – NL10K – NL11K – NLE15K, DANFOSS NLE11KK – NL10K –  
NL11K – NLE15K, ELECTROLUX HP14AH – HP12AH, SECOP TLES8.7KK.3  
– HMK95AA