

# Mbsm,pro, air conditioner, Condor, CsHR09-gcm1t1(0), 9000 btu, 4.5 A, r22, 750 G, T1

Category: air conditioner

written by Lilianne | 2 September 2022

**Condor** مكيف هوائي منفصل - وحدة خارجية  
Climatiseur Split-unité extérieure

Modèle		CSHR09-GCM1T1(0)		النوع	
Voltage	220-240V~	جهد التيار	Refrroidissement	سعة التبريد	9000BTU/h
Fréquence	50Hz	التردد	Chauffage	سعة التدفئة	9800BTU/h
Type du climat	T1	نوع المناخ	Puissance Electr. au refroidiss.	الطاقة الكهربائية للتبريد	925W
Poids	25kg	الوزن	Puissance Electr. au chauffage	الطاقة الكهربائية للتدفئة	900W
Isolation	I	العزل	Puissance nominal refroid.	الطاقة القصوى للتبريد	1200W
Réfrigérant	R22	سائل التبريد	Puissance nominal chauff.	الطاقة القصوى للتدفئة	1200W
Charge réfri.	0.70kg	الكمية			
Comp. LRA	21A	للضغوط			
Degré de protection	IP24	درجة الحماية			
Nuisance	50dB(A)	معيان الضوضاء			
Pression de fonctionnement max admissible coté refoulement	2.5MPa	ضغط الطرد الأقصى			
Pression de fonctionnement max admissible coté aspiration	0.6MPa	ضغط السحب الأقصى			

Fabriqué en Algérie  
صنع في الجزائر

6 130839 002570  
63229966728

Private Picture Copyright : WWW.MBSM.PRO

Mbsm,pro, air conditioner, Condor, CsHR09-gcm1t1(0), 9000 btu, 4.5 A, r22, 750 G, T1

Mbsm.pro, Hermetic, Compressor, Electrolux, L88TN, 3/8 Hp ++, R-22, HMBP, Q=416W, tk-15°C/, tc55, 230V 50Hz, L88TN , ACC, ALPENINOX, ASCASO, BARLINE ,L88TN, CUBIGEL, EUNASA, EURFRIGOR , GEV, ICEMATIC, ITV, SCOTSMAN, SIMAG, ZANUSSI

Category: compressor

written by Lilianne | 2 September 2022

Mbsm.pro, Hermetic, Compressor, Electrolux, L88TN, 3/8 Hp ++, R-22, HMBP, Q=416W, tk-15°C/, tc55, 230V 50Hz, L88TN , ACC, ALPENINOX, ASCASO, BARLINE ,L88TN, CUBIGEL, EUNASA, EURFRIGOR , GEV, ICEMATIC, ITV, SCOTSMAN, SIMAG, ZANUSSI

---

Mbsm.pro, Huayi, Compressor, B25H, R134a, LBP, COMPRESSORS -B SERIES, B25H5 127V, B25H 220V, Water Dispenser, 220-240V/50HZ, 55w, 1/14 hp, 220-240V/60HZ, 63w, 1/12hp

Category: compressor

written by Lilianne | 2 September 2022

Mbsm.pro, Huayi, Compressor, B25H, R134a, LBP, COMPRESSORS -B SERIES, B25H5 127V, B25H 220V, Water Dispenser, 220-240V/50HZ, 55w, 1/14 hp, 220-240V/60HZ, 63w, 1/12hp

---

Mbsm.pro, Panasonic, rotary, compressor, rotary compressor, R22, 220-240V 50HZ, 2jd550D3AA03, 2JD550D, 35.000 BTU, R1a 5.65 A, Lra 21.0 A, 4.375 Hp, 2.91 Ton

Category: compressor

written by Lilianne | 2 September 2022

Mbsm.pro, Panasonic, rotary, compressor, rotary compressor, R22, 220-240V 50HZ,

2jd550D3AA03, 2JD550D, 35.000 BTU, R1a 14.7, Lra 68.0, 4.375 Hp, 2.91 Ton

---

## Mbsm.pro, Compressor, Embraco, Aspera, EMY26CLC, LBP, R600a, 220 – 240V/1/50Hz, 1/12 HP, RSIR, LRA 7.8 A, 83 Wat

Category: compressor

written by Lilianne | 2 September 2022



Private Picture Copyright: [WWW.MBSM.PRO](http://WWW.MBSM.PRO)

Compressor, Embraco, Aspera, EMY26CLC, LBP, R600a, 220 – 240V/1/50Hz, 1/12 HP, RSIR, LRA 7.8 A, 83 Wat

---

## Mbsm.pro, Compressor, Hermetic, Tecumseh, AEZ9440T, R22, 1/3 hp++, MHBP

Category: compressor

written by Lilianne | 2 September 2022

# Basic Info.

Model NO.AEZ9440TLubrication StyleLubricatedCooling SystemAir CoolingCylinder ArrangementBalanced Opposed ArrangementCylinder PositionHorizontalStructure TypeClosed TypeCompress LevelSingle-StageRefrigerant TypeFreonTypeReciprocatingPerformanceLow NoiseDrive ModeElectricPower SourceAC Power ConfigurationStationaryMaterialCopperPiston TypeClosedTrademarkTecumseh HermetiqueTransport PackagePalletSpecificationCE / RoHsOriginChinaHS Code8414301900

## Product Description

Tecumseh Hermetique R134a / R404a/ R22 reciprocating compressor

Hermetique R22  
HBP

For Air  
Conditioning  
Applications.

Features:

Anti Vibration  
mounts supplied

Charged with  
mineral oil and  
dry nitrogen

Crankcase  
heater on TAG  
models

Fan cooling  
required on all  
models

Specifications:

Capacity Rating

Basis: 35°C

Ambient, 11K

Return Gas

Superheat,  
54.5°C

Condensing,  
46.2°C Liquid  
entering

Expansion  
Valve.

Current FLA are  
given at  
nominal  
voltage, rated  
conditions and  
7.2°C

Evaporating  
Temperature.

Motor Types:

PSC = Permanent  
Split  
Capacitor, 1  
Phase, 50 Hz.  
220-240 Volt

3Ø: 3 Phase, 50  
Hz, 400 Volt

Expansion

Device:

C = Capillary  
Tube

C/V = Capillary  
Tube or  
Expansion Valve  
R22 Hermetic

Model No.	Nominal HP	Displ. cm <sup>3</sup> /rev	Motor Type	Nominal Current FLA	Exp. Device	Oil Charge cm <sup>3</sup>	Connections: inches		
cm <sup>3</sup>	Discharge Proc.								
AE 5465E	1/2	12.05	PSC	3.2	C	450	3/8 Tube	1/4 Tube	3/8 Tube
AJ 5510F	3/4	18.6	PSC	5.2	C	887	3/8 Tube	1/4 Tube	1/4 Tube
AJ 5512E	1	21.75	PSC	5.9	C	887	3/8 Tube	1/4 Tube	1/4 Tube
AJ 5513E	1	24.2	PSC	6	C	887	3/8 Tube	1/4 Tube	1/4 Tube
AJ 5515E	1 1/4	25.95	PSC	7.2	C	887	1/2 Tube	5/16 Tube	1/4 Tube
AJ 5518E	1 1/2	32.7	PSC	9.3	C	887	1/2 Tube	5/16 Tube	1/4 Tube
AJ 5519E	1 1/2	34.45	PSC	9.96	C	887	1/2 Tube	5/16 Tube	1/4 Tube
FH 5522E	1 3/4	39.95	PSC	9	C	1330	5/8 Tube	3/8 Tube	5/16 Tube
TFH 5522E	1 3/4	39.95	3Ø	3.8	C/V	1330	5/8 Tube	3/8 Tube	5/16 Tube
FH 5524E	2	43.5	PSC	10	C	1330	5/8 Tube	3/8 Tube	5/16 Tube
TFH 5524E	2	43.5	3Ø	4	C/V	1330	5/8 Tube	3/8 Tube	5/16 Tube
FH 5527E	2 1/4	49.1	PSC	12	C	1330	5/8 Tube	3/8 Tube	5/16 Tube
TFH 5527E	2 1/4	49.1	3Ø	4.2	C/V	1330	5/8 Tube	3/8 Tube	5/16 Tube
FH 5531E	2 1/2	56.65	PSC	14.1	C	1330	3/4 Tube	3/8 Tube	5/16 Tube
TFH 5531E	2 1/2	56.65	3Ø	8	C/V	1330	3/4 Tube	3/8 Tube	5/16 Tube
FH5540E	3	74.25	PSC	18.6	C	1330	3/4 Tube	3/8 Tube	5/16 Tube
TFH 5540E	3	74.25	3Ø	6	C/V	1330	3/4 Tube	3/8 Tube	5/16 Tube
TFH 5540E	3	74.25	3Ø	6	C/V	1330	78	1/2 Valve	5/16 Tube
TAG 5546E	3 3/4	90.2	3Ø	6.6	C/V	1960	7/8 Tube	1/2 Tube	3/8 Tube
TAG 5553E	4	100.7	3Ø	7.4	C/V	1960	7/8 Tube	1/2 Tube	3/8 Tube
TAG 5561E	5	112.5	3Ø	9	C/V	1960	7/8 Tube	1/2 Tube	3/8 Tube
TAG 5568E	6	124.4	3Ø	9.6	C/V	1960	7/8 Tube	1/2 Tube	3/8 Tube
TAG 5573E	6 1/2	134.8	3Ø	11	C/V	1960	7/8 Tube	1/2 Tube	3/8 Tube

Hermetique R22  
M/HBP  
For Medium /  
High  
Temperature  
Applications  
Features:  
Anti-Vibration  
mounts supplied

Charged with mineral oil and dry nitrogen

Rotalock suction valve on CAJ/TAJ models

Crankcase heater on FH/TFH and TAG models

Oil sight glass on FH/TFH and TAG models

Fan cooling required on all models

All models suit capillary tube or expansion valve operation

Rotalock suction and discharge valves on FH/TFH and TAG models

Specifications:  
Capacity Rating Basis: 35°C Ambient, 11K Return Gas Superheat, 54.5°C Condensing, 46°C Liquid entering Expansion Valve.

Current FLA are given at nominal voltage, rated conditions and 7.2°C evaporating temperature.

Motor Types:  
CSIR: Capacitor start, Induction run }  
1 Phase, 50 Hz, 220-240 Volt  
CSR: Capacitor start and run  
3Ø: 3 Phase, 50 Hz, 400 Volt

Conversion:  
Watts x 3.412 = BTU/Hr  
BTU/Hr x 0.293 = Watts

R22 Hermetic

Model No.	Nominal HP	Displ. cm <sup>3</sup> /rev	Motor Type	Nominal Current FLA	Oil Charge cm <sup>3</sup>	Connections: inches	
	Suction	Discharge					
AEZ 4425E	1/5	4.5	CSIR	1.75	450	1/4 Tube	3/16 Tube
AEZ 4430E	1/4	5.7	CSIR	2.2	450	1/4 Tube	3/16 Tube
AEZ 4440E	1/3	7.55	CSIR	2.6	450	1/4 Tube	3/16 Tube

AEZ 9440T	1/3	7.55	CSR	2.03	450	3/8 Tube	1/4 Tube
CAE 4450E	3/8	9.4	CSIR	3.3	450	3/8 Tube	1/4 Tube
CAE 9450T	3/8	9.5	CSR	2.6	450	3/8 Tube	1/4 Tube
CAE 9460T	1/2	11.3	CSR	3.2	450	3/8 Tube	1/4 Tube
CAJ 9408T	5/8	15.2	CSR	3.68	887	1/2 Valve	5/16 Tube
CAJ 9510T	1	18.3	CSR	4.8	887	5/8 Valve	5/16 Tube
CAJ 9513T	1 1/8	24.2	CSR	5.9	887	5/8 Valve	5/16 Tube
CAJ 4517E	1 1/4	25.95	CSR	6.1	887	5/8 Valve	3/8 Tube
TAJ 4517T	1 1/2	25.95	3Ø	2.5	887	5/8 Valve	3/8 Tube
TAJ 4519T	1 1/2	34.45	3Ø	3.5	887	5/8 Valve	1/2 Valve
FH 4524F	2	43.5	CSR	9.55	1480	5/8 Valve	1/2 Valve
TFH 4524F	2	4.35	3Ø	3.9	1480	7/8 Valve	1/2 Valve
FH 4531F	2 1/2	56.65	CSR	12.6	1480	7/8 Valve	1/2 Valve
TFH4531F	2 1/2	56.65	3Ø	4.75	1480	7/8 Valve	1/2 Valve
TFH 4540F	3	74.25	3Ø	6.08	1480	7/8 Valve	1/2 Valve
TAG 4546T	4	90.2	3Ø	6.6	1960	7/8 Valve	5/8 Valve
TAG 4553T	4 1/2	100.7	3Ø	7.4	1960	7/8 Valve	5/8 Valve
TAG 4561T	5	112.5	3Ø	9	1960	1 7/8 Valve	5/8 Valve
TAG 4568T	6	124.4	3Ø	9.6	1960	1 7/8 Valve	5/8 Valve
TAG 4573T	6 1/2	134.8	3Ø	11	1960	1 7/8 Valve	5/8 Valve

Tecumseh  
Hermetique  
R134a  
The world  
renowned  
L'Unite  
Hermetique  
compressors are  
manufactured by  
Tecumseh.

Features:

Charged with  
polyolester oil  
and dry  
nitrogen

Crankcase  
heater on  
FH/TFH and TAG  
models

Oil sight glass  
on FH/TFH and  
TAG models

Rotalock valves  
are included  
for all valve  
connection  
compressors

Anti-vibration  
mounts supplied

Single Phase –  
Medium High SST

Model No.	Nominal HP	Displacement: cm <sup>3</sup> /rev	Cooling	Oil Charge: ml
CAJ4476Y	5/8	21.75	Fan	887
CAJ4492Y	3/9	25.95	Fan	887
CAJ4511Y	1	32.7	Fan	887
FH4518Y	1 1/2	53.2	Fan	1480
FH4525Y	2	74.25	Fan	1480

Three Phase –  
Medium High SST

Model No.	Nominal HP	Displacement: cm3/rev	Cooling	Oil Charge: ml
TAJ4511Y	1	32.7	Fan	887
TFH4518Y	1 1/2	53.2	Fan	1480
TFH4525Y	2	74.25	Fan	1480
TAG4528Y	2 1/2	90.2	Fan	1960
TAG4534Y	2 3/4	100.7	Fan	1960
TAG4537Y	3	112.5	Fan	1960
TAG4543Y	3 1/2	124.4	Fan	1960

Superceded Models

Model No.	Nominal HP	Displacement: cm3/rev	Cooling	Oil Charge: ml
AEZ4425Y	1/5	7.55	Fan	450
AEZ4430Y	1/4	8.85	Fan	450
CAE4440Y	3/8	12.05	Fan	450
CAE4448Y	1/3	14.15	Fan	450
CAJ4452Y	1/3	15.2	Fan	887
CAE4456Y	1/2	16	Fan	450
CAJ4461Y	1/2	18.3	Fan	887

Tecumseh  
Hermetique  
R404A

The world renowned  
L'Unite  
Hermetique  
compressors are  
manufactured by  
Tecumseh.

Features:

Charged with  
polyolester oil  
and dry  
nitrogen

Crankcase  
heater on  
FH/TFH and TAG  
models

Oil sight glass  
on FH/TFH and  
TAG models

Rotalock valves  
are included  
for all valve  
connection  
compressors

Anti-vibration  
mounts supplied

Specifications:



Capacity Rating  
 Basis: 35°C  
 Ambient, 11K  
 Return Gas  
 Superheat,  
 54.5°C  
 Condensing,  
 46°C Liquid  
 entering  
 Expansion  
 Valve.

Current FLA are  
 given at  
 nominal  
 voltage, rated  
 conditions and  
 7.2°C  
 Evaporating  
 Temperature.

Motor Types:

CSIR: Capacitor  
 Start,  
 Induction Run 1  
 Phase, 50 Hz,  
 220-240 Volt

CSR: Capacitor  
 Start and Run  
 3Ø: 3 Phase, 50  
 Hz, 400 Volt

All models are  
 also suitable  
 for operation  
 with R507

Single Phase –  
 Medium High SST

Model No.	Nominal HP	Displacement: cm <sup>3</sup> /rev	Cooling	Oil Charge: ml
CAJ9480Z	5/8	15.2	Fan	887
CAJ9510Z	1	18.3	Fan	887
CAJ9513Z	1 1/8	24.2	Fan	887
CAJ4517Z	1 1/4	25.95	Fan	887
CAJ4519Z	1 1/2	34.45	Fan	887
FH4522Z	1 3/4	39.95	Fan	1480
FH4524Z	2	43.5	Fan	1480
FH4531Z	2 1/2	56.65	Fan	1480
FH4540Z	3	74.25	Fan	1480

Three Phase –  
 Medium High SST

Model No.	Nominal HP	Displacement: cm <sup>3</sup> /rev	Cooling	Oil Charge: ml
TAJ9480Z	5/8	15.2	Fan	887
TAJ9510Z	1	18.3	Fan	887
TAJ9513Z	1 1/8	24.2	Fan	887
TAJ4517Z	1 1/4	25.95	Fan	887
TAJ4519Z	1 1/2	34.45	Fan	887
TFH4522Z	1 3/4	39.95	Fan	1480
TFH4524Z	2	43.5	Fan	1480
TFH4531Z	2 1/2	56.65	Fan	1480
TFH4540Z	3	74.25	Fan	1480
TAG4546Z	4	90.2	Fan	1960
TAG4553Z	4 1/2	100.7	Fan	1960

TAG4561Z	5	112.5	Fan	1960
TAG4568Z	6	124.4	Fan	1960
TAG4573Z	6 1/2	134.8	Fan	1960

Single Phase –  
Low SST

Model No.	Nominal HP	Displacement: cm <sup>3</sup> /rev	Cooling	Oil Charge: ml
CAE2417Z	1/3	11.3	Fan	450
CAE2420Z	1/2	12.54	Fan	450
CAE2424Z	5/8	15	Fan	450
CAJ2428Z	1/2	15.2	Fan	887
CAJ2432Z	5/8	18.3	Fan	887
CAJ2446Z	3/4	26.15	Fan	887
CAJ2464Z	1 1/2	34.45	Fan	887
FH2480Z	2	53.2	Fan	1625
FH2511Z	2 1/2	74.25	Fan	1625

Three Phase –  
Low SST

Model No.	Nominal HP	Displacement: cm <sup>3</sup> /rev	Cooling	Oil Charge: ml
TAJ2464Z	1 1/2	34.45	Fan	887
TFH2480Z	2	53.2	Fan	1625
TFH2511Z	2 1/2	74.25	Fan	1625
TAG2516Z	4	112.5	Fan	1960
TAG2522Z	5 1/2	134.8	Fan	1960

Three Phase –  
Parallel  
Applications

Model No.	Nominal HP	Displacement: cm <sup>3</sup> /rev	Application: SST	Cooling	Oil Charge: ml
TAGP4546Z	4	90.2	Medium	Fan	1960
TAGP4553Z	4 1/2	100.7	Medium	Fan	1960
TAGP4561Z	5	112.5	Medium	Fan	1960
TAGP4568Z	6	124.4	Medium	Fan	1960
TAGP4573Z	6 1/2	134.8	Medium	Fan	1960
TAGP2516Z	4	112.5	Low	Fan	1960
TAGP2522Z	5 1/2	134.8	Low	Fan	1960



Private Picture Copyright : [WWW.MBSM.PRO](http://WWW.MBSM.PRO)

**MEDIUM/HIGH BAK PRESSURE COMPRESSORS**

Type	COMPRESSOR MODELS	Nominal Power (H.P.)	Refrigerant		REFRIGERATION CAPACITY AT 50HZ Rafed 54.5°C Cond Temp (Watts)						VOLTAGE	
			Displacement (cm <sup>3</sup> )	Oil charge (cm <sup>3</sup> )	Evaporating Temperature							
					-25°C	-15°C	-10°C	0°C	+7.2°C	+15°C		
	AEZ4425E	1/5	R22	4.50	250	138	192	256	413	553	728	220-240V/1/50Hz
	AEZ4430E	1/4	R22	5.70	250	192	255	336	538	718	945	220-240V/1/50Hz
	AEZ3440E	1/3	R22	7.55	350	308	362	464	733	980	1298	220-240V/1/50Hz
	AEZ4440E	1/3	R22	7.55	350	308	362	464	733	980	1298	220-240V/1/50Hz
	AEZ9440T	1/3	R22	7.55	350	222	362	464	733	975	1302	220-240V/1/50Hz
	CAE4450E	3/7	R22	9.40	350	355	426	554	896	1212	1623	220-240V/1/50Hz
	CAE9450T	3/7	R22	9.40	350	256	426	554	896	1212	1623	220-240V/1/50Hz
	CAE9460T	1/2	R22	11.30	350	324	553	715	1134	1514	2000	220-240V/1/50Hz
	CAJ9480T TAJ9480T	5/8	R22	15.20	887	461	786	1011	1586	2103	2761	220-240V/1/50Hz 400V/3/50Hz
	CAJ9510T TAJ9510T	1	R22	18.30	887	545	956	1229	1909	2510	3266	220-240V/1/50Hz 400V/3/50Hz
	CAJ9513T TAJ9513T	1-1/8	R22	24.20	887	526	1074	1451	2411	3272	4366	220-240V/1/50Hz 400V/3/50Hz
PISTON	CAJ4517E TAJ4517T	1-1/4	R22	25.95	887	771	1233	1673	2727	3629	4743	220-240V/1/50Hz 400V/3/50Hz



Private Picture Copyright : [WWW.MBSM.PRO](http://WWW.MBSM.PRO)



Private Picture Copyright : [WWW.MBSM.PRO](http://WWW.MBSM.PRO)

---

# Mbsm.pro, Compressor, ELECTROLUX, 3/4 Hp ++ (big), R-12, S26TY, HMBP

Category: compressor

written by Lilianne | 2 September 2022



Private Picture Copyright : [WWW.MBSM.PRO](http://WWW.MBSM.PRO)

Private Picture Copyright : [WWW.MBSM.PRO](http://WWW.MBSM.PRO)

Commercial R12 – Medium Suction Temperature

Capacity range (watts)	Aspera	Kirby	Old Kirby Model	Danfoss	L'Unite Hermetique	Unidad Electrolux	Kelvinator	Necchi	Bulkon
201-250		AE6LMY	AE67ZD7 AE6LMA	TL4B		L57PX	S88ND	M4J	
250-300								M5J	
301-350	A5144A	AE8MG	AE59ZF9 AE8LMA						
351-400		AE9MHY	AE4425A AE9MHA	FR6B	CAE59ZF9	L76PX		M7J	
401-450	A5160A			FR7.5B		L68TY	S54FD		
450-500	A6170A	AEV9LMY	AE7416A AE10LMA	FR8.5B	CAE41ZF11	L88TX	S44ND	M9J	
501-550							S54FD S44CFD	M11, A9	
551-600	T6185A	AE12LMY	AE12LJ	FR10B	CAE4440A	P12TY	S33FD S33TF		
601-650	E6187A			FR11B SC10B					
651-700		AE14LMY	AE7423A AE14LMA			P14TY			KB14B1
701-800	T6213A			SC12B	CAJ4452A			A13	
801-900		AE16LMY	AE16LMA AE16LJ	SC15B				N17	KB19B1
901-1000		AJ18MY	AJ7428A						KB19B1
1001-1200	T6215A	AJ22LMY	AJ7434A AJ22LJ	SC18B	CAJ4461A	S18TY	S5050FDH		KB23B1
1201-1400	J6220A	AJ26LMY	AJ7445A AJ26LJ	SC21B		S26TY	S7575FDH		KB26B1
1401-2000	J6226A	AJ34LMY	AJ7457A AJ34LJ		CAJ4511A	S34TY	S1010FDH		KB37B1
2001-2500	H6238A	AH49MHY	AH4514A		CAH4518A TAH4518A				
2501-3500	H6253A	AH74MHY	AH4521A		CAH4524A TAH4524A				





HMBP															
R12 50 Hz			CECOMAF (W)						ASHRAE		R12 50 Hz				
			-25	-15	5		10	7.2							
					W	COP		kcal/h	COP						
<b>220-240V 50Hz ~I</b>															
L45PX	1/6	F	4.50	77	131	325	1.68	391	330	1.91	C	300	8.4	RSIR	R
L57PX	1/5	F	5.67	97	171	422	1.84	505	427	2.10	C	300	9.5	RSIR	R
L76TX	1/5	F	7.57	131	223	545	1.84	654	553	2.07	C-V	300	9.5	CSIR	R
L88TY	1/4	F	8.85	165	276	646	1.87	768	652	2.11	C-V	300	10.0	CSIR	R
P12TY	3/8	F	12.00	209	356	871	1.82	1044	882	2.05	C-V	400	11.2	CSIR	R
P14TY	3/8	F	14.00	242	412	985	1.73	1176	996	1.96	C-V	400	11.5	CSIR	R
R18TY	1/2	F	18.10	277	533	1328	2.02	1586	1343	2.30	C-V	640	19.9	CSIR	R
X18TY	1/2	F	18.40	322	544	1323	1.95	1587	1340	2.20	C-V	500	16.1	CSIR	R
S26TY	3/4	F	25.93	391	770	1933	2.01	2307	1955	2.29	C-V	887	22.7	CSIR	R
S34TY	I	F	34.42	643	1171	2752	2.31	3255	2771	2.60	C-V	887	22.7	CSR	R
<b>200-220/230V 50/60Hz ~I</b>															
L45PX	1/6	F	4.50	77	131	325	1.59	391	330	1.79	C	300	8.4	RSIR	R
L57PX	1/5	F	5.67	97	173	389	1.75	456	390	1.96	C	300	9.5	RSIR	R
S18TY	1/2	F	18.10	277	533	1329	1.99	1586	1344	2.26	C-V	887	21.8	CSIR	R
X18TY	1/2	F	18.40	322	544	1323	1.93	1587	1340	2.18	C-V	500	16.1	CSIR	R
S26TY	3/4	F	25.93	391	770	1933	2.00	2307	1954	2.27	C-V	887	22.7	CSIR	R
S34TY	I	F	34.42	643	1171	2752	2.27	3255	2770	2.58	C-V	887	22.7	CSR	R

Private Picture Copyright : WWW.MBSM.PRO

Mbsm\_dot\_pro\_private\_PDF\_S26TYTélécharger

Mbsm.pro, Compressor, ACC, Cubigel, Huayi, Electrolux, ZEM, MPT14LA, MPT14RA, LBP, R404A, R507, 1/2HP, 220-240V

Category: compressor

written by Lilianne | 2 September 2022

Compressor Tecumseh L` Unite CAJ2432Z, LBP – R404A, 220 – 240V, 50 Hz, 1 phase, discharge: 18.3 cm<sup>3</sup>, oil type: POE, oil charge: 887 cm<sup>3</sup>, electrical equipment: CSR, cooling power 381 W at -35 / +40 °C, connection: suction: 1/2 inch, discharge: 5/16 inch, sound level: 56 dBA, start capacitor: 8 8 uF/250V, run capacitor: 15 uF/400V, expansion device: capillary or expansion valve, height: 271 mm, weight: 21.5kg

Type: Low back pressure (LBP)

Refrigerant: R404a/507

Displacement: 14.32cm<sup>3</sup>

Power: 1/2CV

Voltage: 230V – 50Hz

Single-phase

Motor type: CSR

Weight: 13.4 kg

Evaporation temperature

-40°C: 243W

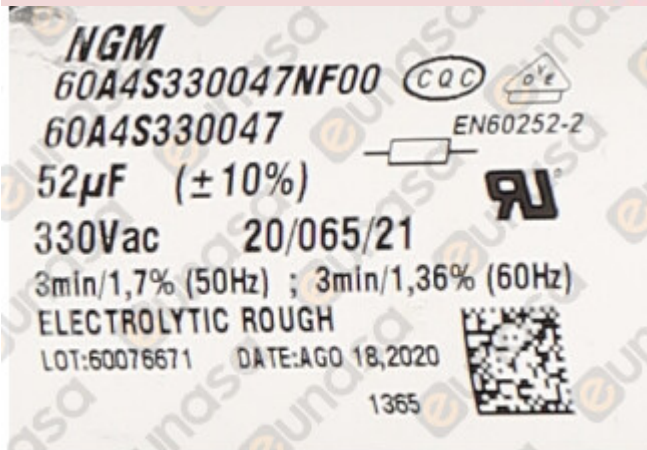
-30°C: 420W

-25°C: 535W

-10°C: 988W



Private Picture Copyright : [WWW.MBSM.PRO](http://WWW.MBSM.PRO)



Private Picture Copyright : [WWW.MBSM.PRO](http://WWW.MBSM.PRO)



Private Picture Copyright: [WWW.MBSM.PRO](http://WWW.MBSM.PRO)

Mbsm\_dot\_pro\_private\_PDF\_MPT14LATélécharger

Mbsm.pro, COPLAND, Compressor,  
KCJ511HAE, KCJ511HAE-BXXX , HBP,  
1-3/8 hp big ++, R-22 , 230 V, 50 Hz,  
1PH , FAN, 350 ft3 / m

Category: compressor

written by Lilianne | 2 September 2022

#### Technical Specification

Cooling Capacity (Btu/hr) 11275

Cooling Capacity (w) 3302

HP 1-3/8

LRA 54

COMPRESSOR MECHANICAL AND PHYSICAL DATA

Number of cylinders 2

Displacement @ 50 Hz, cu.m/h 3.2  
Bore/Stroke, mm 3.5/1.9  
Length/Width, mm 235/179  
Height, mm 264  
Net Weight, kg 21.5  
Stub Suction, inch 5/16  
Stub Discharge, inch 5/16  
Oil Quantity, l 0.9  
Base mounting (hole dia), mm NA (0.0)  
Sound Pressure @ 1m (HT), dBA 57  
Sound Power (HT), dBA 68  
COMPRESSOR ELECTRICAL DATA (220/240V – 1~ – 50Hz)  
Locked Rotor Current, A 25  
Default Enclosure Class IP 21 (IEC 34)  
ACCESSORIES OPTIONAL  
Mounting Grommets Standard  
Single Phase Equipment Relay, Start and Run Capacitor



Private Picture Copyright: [WWW.MBSM.PRO](http://WWW.MBSM.PRO)

Horse Power

50HZ

Brand

COPLAND

Compressor Technology

HERMETIC

Model Name/Number

KCJ511HAE

Power

220V



Private Picture Copyright : [WWW.MBSM.PRO](http://WWW.MBSM.PRO)

[Mbsm\\_dot\\_pro\\_private\\_PDF\\_KCJ511HAETélécharger](#)  
[Mbsm\\_dot\\_pro\\_private\\_PDF\\_KCJ511HAE-1Télécharger](#)

---

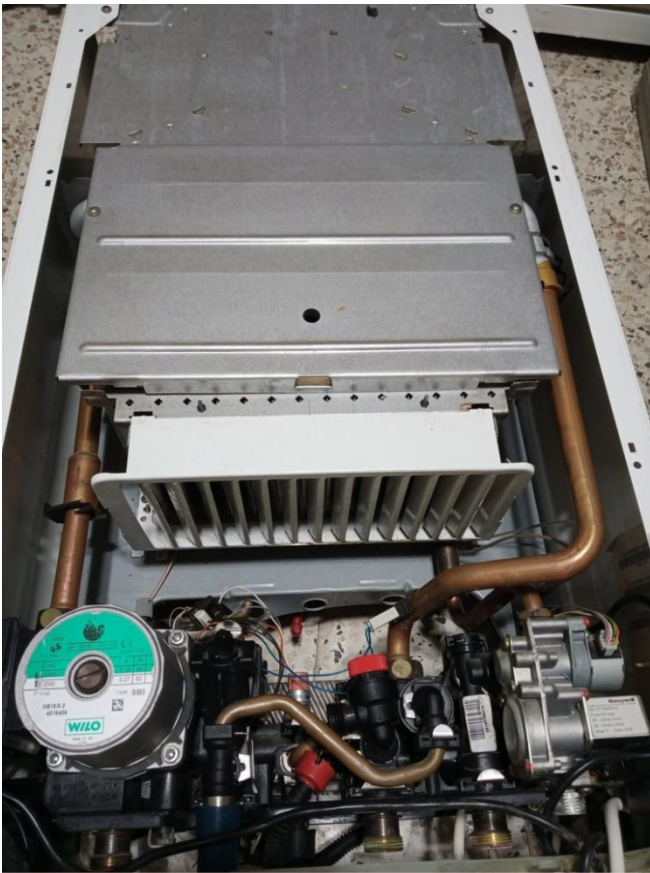
## Saunier Duval C25E

Category: Pictures

written by Lilianne | 2 September 2022



Private Picture Copyright: [WWW.MBSM.PRO](http://WWW.MBSM.PRO)



Private Picture Copyright: [WWW.MBSM.PRO](http://WWW.MBSM.PRO)