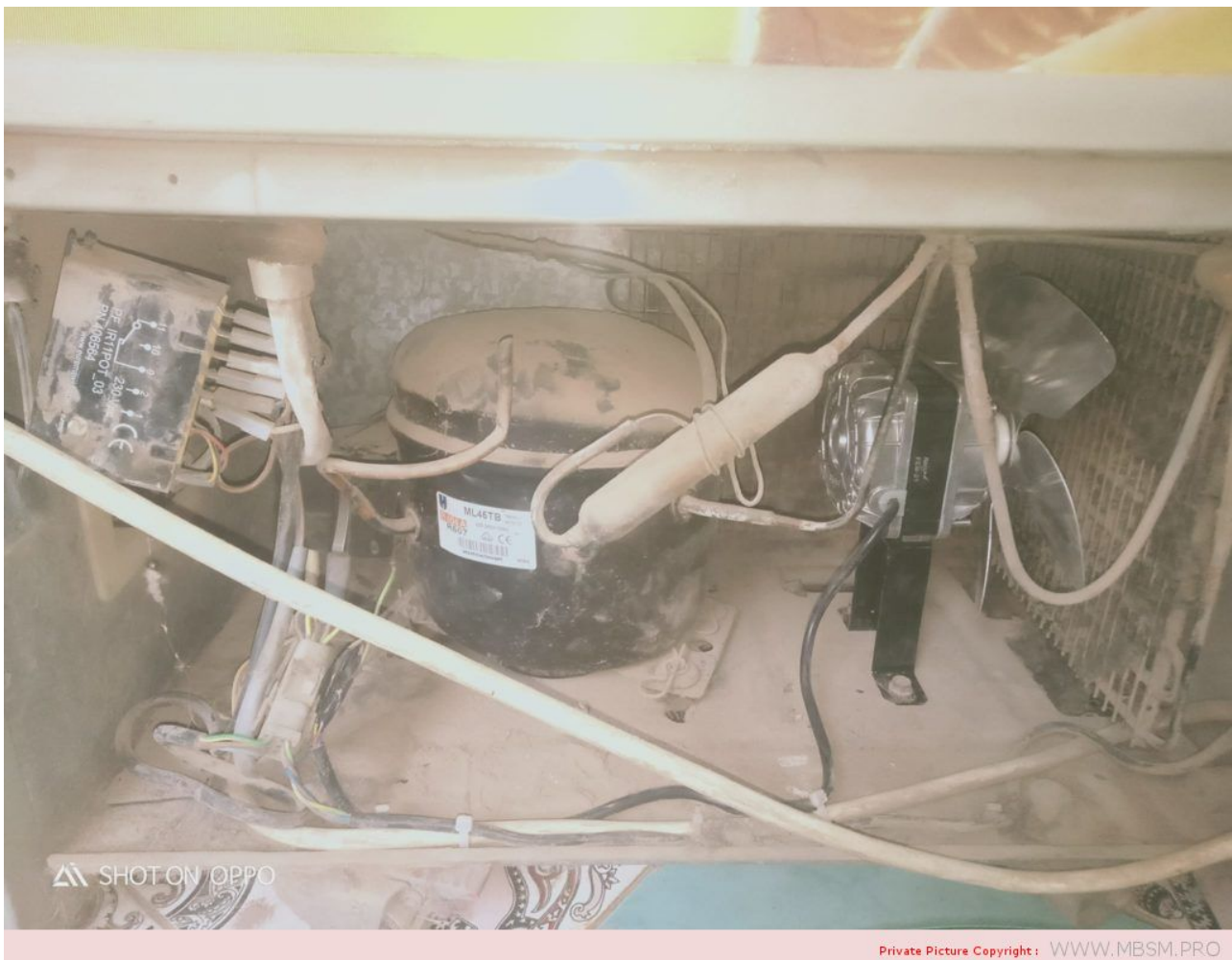


Mbsm.pro, Compressor, Cubigel, Huayi, Electrolux, ZEM, Freezer, ML45TB, HMBP, R404A, R507, 220 – 240V/1/50Hz, 1/5 HP, ++ Big, 1/4 Hp –, CSIR

written by Lilianne | 11 February 2022



Compressor ACC Cubigel Huayi Electrolux ZEM ML45TB, HMBP –
R404A, R507, 220 – 240V/1/50Hz, 1/5 HP, discharge 4.5 cm³,
motor type CSIR, oil type ISO VG46 ester, oil charge 300 cm³,
528 W at +5 / +55 °, input power, current 352 W, 2.04A,
expansion device: capillar or valve, cooling: fan, weight 10.1

kg

**Compressor Embraco Aspera
NEK6210GK, MBP – R404A, R507,
220 – 240V/1/50Hz, 1/2 HP,
discharge 8.77 cm³, motor
type CSIR, lubricant type POE
22, lubricant charge 350
ml.1318 W at +7.2 / +54.4 °,
expansion device: capillary
or valve, cooling: fan
cooling, weight 11 kg**

written by Lilianne | 11 February 2022

Compressor ASPERA NEK6210GK | NEK 6210 GK

Compressor Embraco Aspera NEK6210GK, MBP – R404A, R507, 220 – 240V/1/50Hz, 1/2 HP, discharge 8.77 cm³, motor type CSIR, lubricant type POE 22, lubricant charge 350 ml.1318 W at +7.2 / +54.4 °, expansion device: capillary or valve, cooling: fan cooling, weight 11 kg

Refrigerant	R404A/R507
Working range[stC] MBP	-20 do +10

Nominal capacity [W] (evaporating temperature +7,2C, Condensing temperatur +54,4C)	1303
Power supply	220-240V 50Hz
Engine type	CSIR
Displacement [cm ³]	8,77
Weight [kg]	11

Evaporating temperature +55 C

Evaporating Temperature	Cooling Capacity +/-5%	Power Consumption +/-5%	Current Consumption +/-5%	Gas Flow Rate +/-5%	Efficiency +/-7%			
						(kg/h)	(kcal/Wh)	(W/W)
°C	(kcal/h)	(W)	(Btu/h)	(W)	(A)	(kg/h)	(kcal/Wh)	(W/W)
-20	384	447	1.525	365	2,36	11,99	1,05	1,22
-15	467	544	1.855	419	2,58	14,69	1,12	1,30
-10	574	668	2.278	470	2,79	18,18	1,22	1,42
-5	704	819	2.795	519	3,00	22,51	1,36	1,58
0	858	998	3.405	565	3,20	27,73	1,52	1,77
5	1.036	1.204	4.109	609	3,40	33,90	1,70	1,98
10	1.237	1.438	4.907	650	3,59	41,06	1,90	2,21

Substitutes for this compressor are: Electrolux ML90TB , L'Unite Hermetique/Tecumseh AE4450Z

Refrigerant:	R404A, R507
--------------	-------------

Embraco aspera

NEK6210GK



THERMALLY PROTECTED

220 - 240V - 50Hz

R 404A

POE: OIL 350°C

1 PH

SUCTION

MADE IN SLOVAKIA NO START WITHOUT STARTING DEVICE



958CA51

LX

N10ZGP43

Mbsm_dot_pro_private_PDF_NEK6210GKTélécharger