

www.mbsm.pro, Zmc GP12TB 3/8 Hp – 1/2 Hp ,Compresseur, R134a 220V

written by Jamila | 9 September 2018

www.mbsm.pro, Zmc GP12TB 3/8 Hp ,Compresseur, R134a 220V

www.mbsm.pro, Electrolux GL75AA Refrigerator 1/5 HP, Compressor Cooling solution for Refrigerators

written by Jamila | 9 September 2018



Picture5 Mbsm Dot Pro : www.mbsm.pro

www.mbsm.pro, Electrolux GL75AA Refrigerator 1/5 HP,
Compressor Cooling solution for Refrigerators

www.mbsm.pro , LG MA42LBJG Refrigerator Compressor 1/6 Hp , Cooling solution for Refrigerators

written by Jamila | 9 September 2018



www.mbsm.pro

Cooling solution for Refrigerators & Commercial Appliances
This M-series reciprocating LBP compressor provides complete cooling solution for Domestic & Commercial refrigeration appliances. Compact Size, Silent operation, Low Voltage start ability (LVS) are its prominent features. M-Series compressor caters to 6s quality assurance and has globally proven reliability.

www.mbsm.pro , Code Erreur E2 , Machine a Laver Benken

written by mahdi miled | 9 September 2018

Le Code d'erreur E2 est suite au blocage d'eau au petit filtre a l'entree d'eau ou absence d'eau ou panne de vanne

www.mbsm.pro , Réparation , CONTRÔLEUR DE PRESSION JETLY TYPE PRESSCONTROL

written by mahdi miled | 9 September 2018

Démarrage immédiat de la pompe à l'ouverture d'un robinet.

Les contrôleurs de pression JETLY de la série PRESSCONTROL, permettent la suppression des dispositifs de commande et de protection manque d'eau de la pompe (électrodes, flotteurs, contacteurs manométrique). En effet, les PRESSCONTROL sont des systèmes hydrauliques et électroniques conçus pour automatiser et protéger contre le manque d'eau les pompes de surfaces et immergées. Ce système gère automatiquement le fonctionnement de la pompe et l'appareil ne demande ni réglage, ni entretien d'aucune sorte.

www.mbsm.pro , Plomberie , Finition Douche , Installation Multicouche Avec Collecteur

written by mahdi miled | 9 September 2018

www.mbsm.pro, Plomberie, Finition Douche, Installation Multicouche Avec Collecteur

Mbsm.pro, erreur E2 machine a laver Gmc Automatique

written by mahdi miled | 9 September 2018

Pour ce problème, la solution est : switcher de la porte ...
certain l'annule complètement ...

**www.mbsm.pro , free, For
windows, Personal Renamer ,
Easy filerenaming, Portable
Bulk File Renamer, Folder
monitor, All in one,**

written by mahdi miled | 9 September 2018

www.mbsm.pro , free, For windows, Personal Renamer , Easy
filerenaming, Portable Bulk File Renamer, Folder monitor, All
in one,

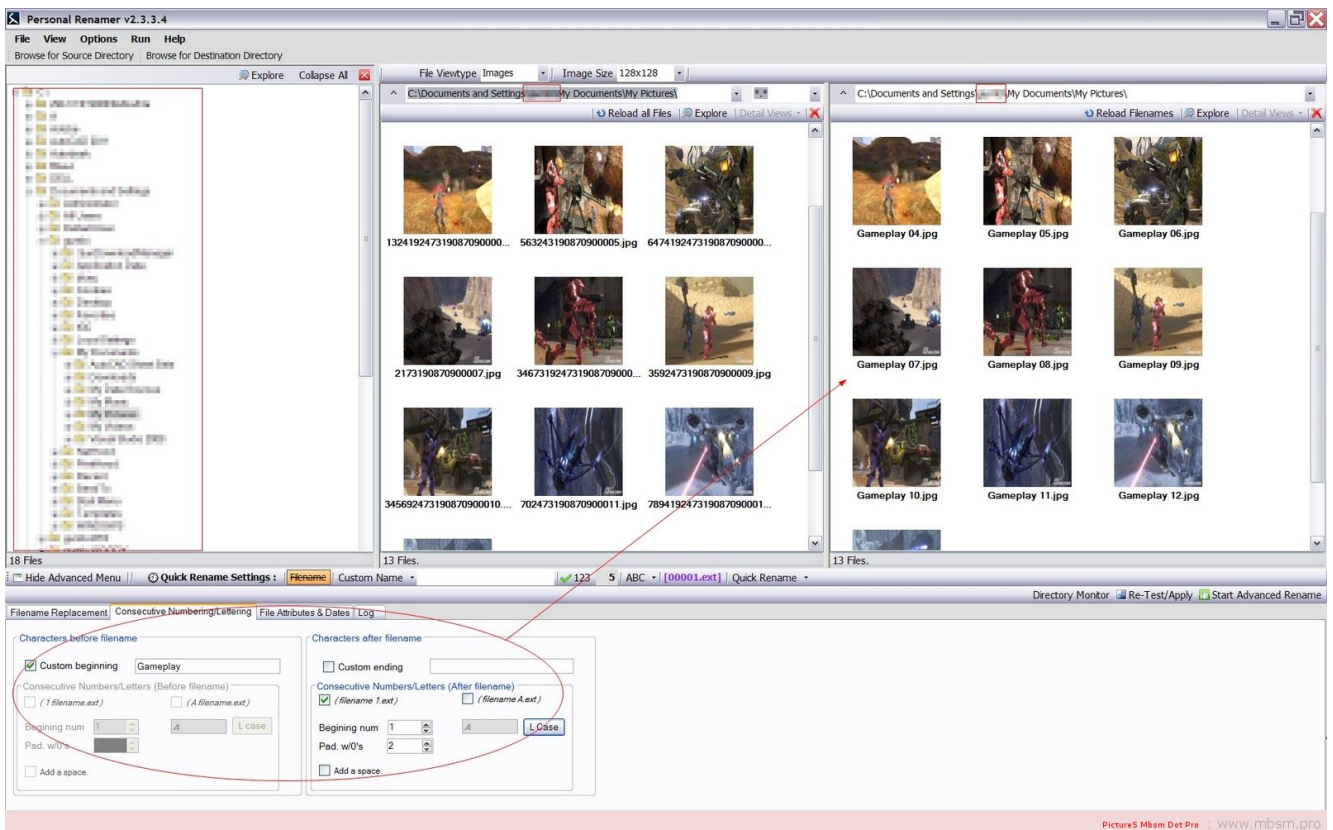
**Personal Renamer is being upgraded,
and now has an official website
Please**

visit www.personalrenamer.com

Many have waited for this release, more specifically for the addition of the service monitor which has been added to the program in this release. Personal Renamer has always had the option to monitor a directory and rename files but with this latest addition users can have Personal Renamer monitor a directory invisibly the background, and more importantly while logged out. This is a very powerful and useful addition. Other new features include Undo and the option to apply saved settings when program starts up.

Download Version 2.4.0.0 (Service Beta)

[www-mbsm-pro-Personal-Renamer-Easy-filerenaming-Portable-Bulk-File-Renamer-Folder-monitor-All-in-one-1.jpg](#) (279 KB)

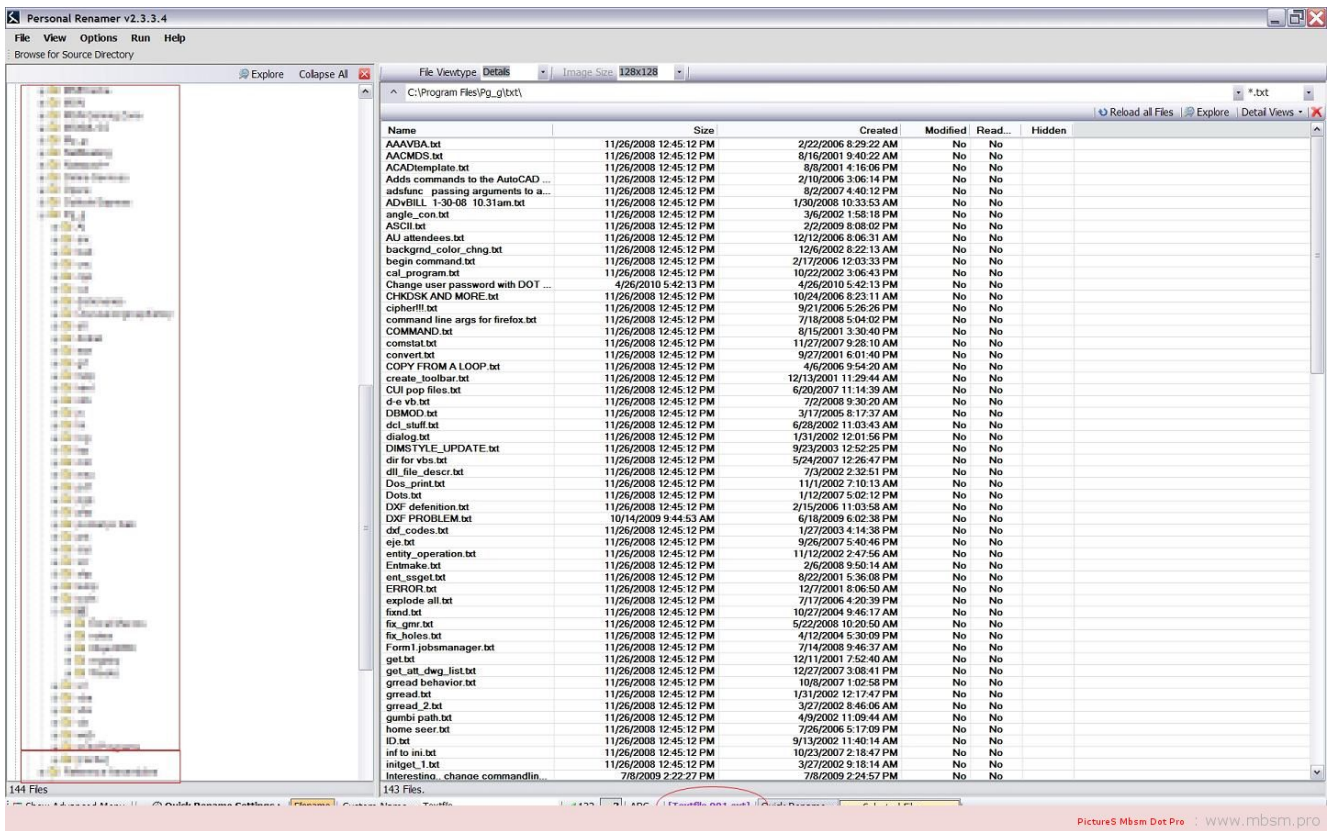


[www-mbsm-pro-Personal-Renamer-Easy-filerenaming-Portable-Bulk-](#)

File-Renamer-Folder-monitor-All-in-one-1.jpg (223 KB)



www-mbsm-pro-Personal-Renamer-Easy-filerenaming-Portable-Bulk-File-Renamer-Folder-monitor-All-in-one-2.jpg (253 KB)



www-mbsm-pro-Personal-Renamer-Easy-filerenaming-Portable-Bulk-File-Renamer-Folder-monitor-All-in-one-2.jpg (261 KB)



www.mbsm.pro , Some Funny Electric pictures part1

written by mahdi miled | 9 September 2018

www.mbsm.pro , Some Funny Electric pictures part1

mbsm-dot-pro-picture-electric -funny1.jpg (37 KB)



mbsm-dot-pro-picture-electric -funny1.jpg (47 KB)



mbsm-dot-pro-picture-electric -funny2.jpg (63 KB)



mbsm-dot-pro-picture-electric -funny2.jpg (73 KB)



mbsm-dot-pro-picture-electric -funny3.jpg (121 KB)



mbsm-dot-pro-picture-electric -funny3.jpg (124 KB)



mbsm-dot-pro-picture-electric -funny4.jpg (145 KB)



mbsm-dot-pro-picture-electric -funny4.jpg (133 KB)



mbsm-dot-pro-picture-electric -funny5.jpg (117 KB)



mbsm-dot-pro-picture-electric -funny5.jpg (129 KB)



mbsm-dot-pro-picture-electric -funny6.jpg (23 KB)



mbsm-dot-pro-picture-electric -funny6.jpg (27 KB)



mbsm-dot-pro-picture-electric -funny7.jpg (62 KB)



mbsm-dot-pro-picture-electric -funny7.jpg (72 KB)



mbsm-dot-pro-picture-electric -funny8.jpg (31 KB)



mbsm-dot-pro-picture-electric -funny8.jpg (33 KB)



www.mbsm.pro , Quelle est la différence entre le SDS PLUS et le SDS MAX ?

written by mahdi miled | 9 September 2018

Lorsque vous choisissez un outil, vous aurez donc le choix entre la fixation par mandrin classique (avec ou sans clé de serrage) et par mandrin SDS avec les variantes SDS PLUS et SDS MAX.

Attention, vos accessoires classiques ne seront pas adaptés aux système SDS et inversement ! Le système SDS accueille en effet des mèches/forets avec cannelures qui s'encastrent dans le mandrin et permettent une fixation plus fiable que les forets classiques qui finissent par «glisser dans le mandrin», particulièrement lors de gros travaux (forage / percussion sur de la pierre)