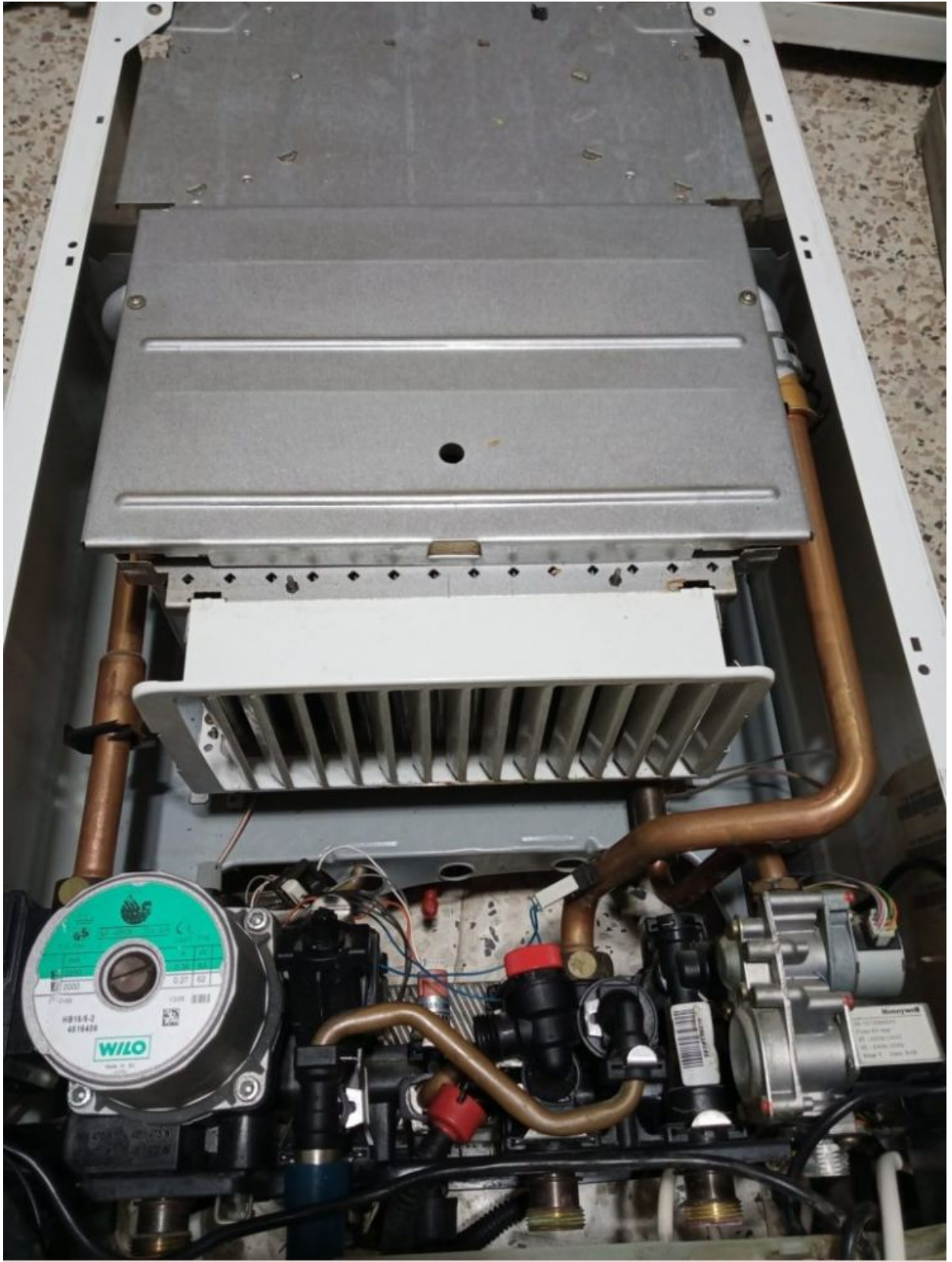


Saunier Duval C25E

written by Lilianne | 29 December 2021





Private Picture Copyright: WWW.MBSM.PRO

Thermostat d'ambiance , Thermostat de sécurité, Marque IMIT, Italie

written by Lilianne | 29 December 2021















Private Picture Copyright : WWW.MBSM.PRO



Private Picture Copyright : WWW.MBSM.PRO





Private Picture Copyright : WWW.MBSM.PRO

SCHNEIDER N:ATV32H075M2
variable speed drive ATV32 –
0,75 kw – 200 V – 1 phase –
with heat sink

written by Lilianne | 29 December 2021







PINCE EMBOITURE VIRAX 12-32MM SERTISSAGE AXIAL PER-PEX 12-16MM

written by Lilianne | 29 December 2021



Private Picture Copyright: WWW.MBSM.PRO







Private Picture Copyright : WWW.MBSM.PRO



Machine a laver lg 11kg

written by Lilianne | 29 December 2021



Mbsm.pro, Compressor,
JIAXIPERA, ND1080Y, 1/8HP,
ND1090Y, 1/8+HP, ND1110Y,
1/7HP, ND1111Y, 1/6-HP,
ND1112Y, 1/6+HP, NX1080Y,
1/8HP, NX1090Y, 1/8+HP,
NX1110Y, 1/7HP, NX1111Y,
1/6HP, NX1112Y, 1/6+HP,
NX1113Y, 1/5HP, NX1114Y,
1/5+HP, NX1116Y, 1/4HP,
NX1117Y, 1/4HP, NX1119Y,
1/4+HP, NX1120Y, 1/4+HP,
TB1080Y, 1/8HP, TB1090Y,
1/8+HP, TB1110Y, 1/7HP,
TB1111Y, 1/6HP, TB1112Y,
1/6+HP, TB1113Y, 1/5HP,
TB1114Y, 1/5+HP, TX1080Y,
1/8HP, TX1090Y, 1/8+HP,

**TX1110Y, 1/7HP, TX1111Y,
1/6HP, TX1112Y, 1/6+HP,
TX1113Y, 1/5HP, TX1114Y,
1/5+HP, VNX1111Y, 1/6HP,
VNX1113Y, 1/5HP, VNX1116Y,
1/4HP, ZBX1117CY, 1/4HP,
ZBX1119CY, 1/4+HP, ZBX1121CY,
1/4+HP**

written by Lilianne | 29 December 2021

Mbsm.pro, Compressor, JIAXIPERA, ND1080Y, 1/8HP, ND1090Y, 1/8+HP, ND1110Y, 1/7HP, ND1111Y, 1/6-HP, ND1112Y, 1/6+HP, NX1080Y, 1/8HP, NX1090Y, 1/8+HP, NX1110Y, 1/7HP, NX1111Y, 1/6HP, NX1112Y, 1/6+HP, NX1113Y, 1/5HP, NX1114Y, 1/5+HP, NX1116Y, 1/4HP, NX1117Y, 1/4HP, NX1119Y, 1/4+HP, NX1120Y, 1/4+HP, TB1080Y, 1/8HP, TB1090Y, 1/8+HP, TB1110Y, 1/7HP, TB1111Y, 1/6HP, TB1112Y, 1/6+HP, TB1113Y, 1/5HP, TB1114Y, 1/5+HP, TX1080Y, 1/8HP, TX1090Y, 1/8+HP, TX1110Y, 1/7HP, TX1111Y, 1/6HP, TX1112Y, 1/6+HP, TX1113Y, 1/5HP, TX1114Y, 1/5+HP, VNX1111Y, 1/6HP, VNX1113Y, 1/5HP, VNX1116Y, 1/4HP, ZBX1117CY, 1/4HP, ZBX1119CY, 1/4+HP, ZBX1121CY, 1/4+HP



ZBX 1119 CY
1 / 4 + HP



ZBX 1121 CY
1 / 4 + HP



ZBX 1122 CY
1 / 4 + HP

Private Picture Copyright : WWW.MBSM.PRO



MH 1110 Y
1 / 6 - HP

ND 1070 Y
1 / 9 HP

ND 1080 Y
1 / 8 HP



ND 1090 Y
1 / 8 + HP



ND 1110 Y
1 / 7 HP



ND 1111 Y
1 / 6 - HP



ND 1112 Y
1 / 6 + HP



NX 1080 Y
1 / 8 HP



NX 1090 Y
1 / 8 + HP

Private Picture Copyright : WWW.MBSM.PRO



**Mbsm.pro, Deep, freezer,
congeła, 383 Litre,
Compressor, R134A, 215W, 1/4
Hp++, 1/3 Hp-, 215W**

written by Lilianne | 29 December 2021

□ □□□□ □□□□ ,□□□□□□□□ □□ □□□□□□□ □□□□□□ □□□□□ , □□□*hp*
,□ □□□□ □□□□□, □□□□ □□□□□ □□□□□*hp*



Private Picture Copyright: WWW.MBSM.PRO



Mbsm.pro, Refrigerator, Compressor, Samsung, 1/4 Hp, r134a, 150g, MK172HL1UA,

**MK172H-L1UA, MK172HL1UA/TSE,
200/220V-50HZ/ 135W,
200/220V-60HZ/159W, RSCR**

written by Lilianne | 29 December 2021



https://www.mbsm.pro/wp-content/uploads/2020/12/Mbsm_dot_pro_private_PDF_compressor-catalogue-2015-1.pdf

SPECIFICATION

REFRIGERATOR MODEL NO :	RT41MASW
DIMENSION(WxDxH) :	670mm x 650mm x 1685mm
GROSS CAPACITY :	410 l
RATED VOLTAGE :	220V
RATED FREQUENCY :	60Hz
RATED INPUT :	136W
RATED CURRENT :	0.86A
DEFROSTING INPUT(W/A) :	274W/1.24A
CLIMATIC CLASS OF THE APPLIANCE :	T
RATED MAXIMUM INPUT OF LAMP :	30 W
NAME OF REFRIGERANT :	R-134a
MASS OF REFRIGERANT :	150 g
NET WEIGHT :	67 Kg
NAME OF INSULATION BLOWING GAS :	CYCLOPENTANE
MADE IN THAILAND	

DA68-01618A

Private Picture Copyright : WWW.MBSM.PRO



L111CYA, COMPRESSOR, ASSY, Indesit , Ariston, whirlpool, 1/5hp, 1bp, 180W, r600a

written by Lilianne | 29 December 2021





Mbsm_dot_pro_private_PDF_L111CYATélécharger

HGX12P/75-4,

R410A,

compressor, semi-hermétique, BOCK, 25,0 hp

written by Lilianne | 29 December 2021

HGX12P/75-4 R410A

Data Sheet

Power supply	220/240 V-380/420 V-50 Hz-3 ph (265/290 V-440/480 V-60 Hz-3 ph) Δ Y
Horsepower	25,0 hp
Displacement	6,70 m3
Cooling capacity at Refrigeration conditions, R407C	3,39 kW
Cooling capacity at Refrigeration conditions, R404A	3,97 kW
Refrigerant	R134a, R404A, R407C, R407F, R448A, R449A, R507, R513A
Suction pipe	5/8"
Discharge pipe	1/2"
Weight	49 kg
LRA (Δ/y)	43/25 A
MCC (Δ/y)	8,0/4,6 A
Type of oil	FUCHS Reniso Triton SE 55
Other remarks	Available in ATEX version, Electronic frequency control (30-70 Hz), Equipped with oil pump without connections to the differential oil pressure switch

Accessories	Control Capacity 50/100%, Crankcase heater 50-120 W, Thermal protection thermostat (PTC sensor)
Application	MHBP
Technology	Fixed speed
Lubrication mode	Oil pump
Low pressure design	19 bar
High pressure design	28 bar
Type of motor cooling	Suction gas
Protection type	IP 66
Motor protection type	INT69 G
Speed	1450 rpm
1)	



Mbsm_dot_pro_private_PDF_HGX12PTélécharger

BOCK BOCK GmbH, Benzstr.7
72636 Frickenhausen, Germany **CE**

Typ: HGX12P/75-4 S

Nr.: BD44874A046

I_{max} : 8,0/4,6A

I_{block} Δ : 43A Y: 25A

P_{max} : ND(LP) / HD(HP) = 19/28 bar

220-240V Δ /380-420VY - 3 - 50HZ

n: 1450 min⁻¹ \dot{V}_{th} : 6,70 m³/h

265-290V Δ /440-480VY - 3 - 60HZ

n: 1740 min⁻¹ \dot{V}_{th} : 8,1 m³/h

IP66

Öl: BOCKlubE55

W
Impo

Ab 02. August 2021 sind
Diese Änderung ist auch an
Die im Werk serienmäßig eingepflichteten
Wartungseinheiten minderwertiger
aufgrund der Verwendung im gesamten
erheblich abwechseln und zudem
Insbesondere eine Validierung im
Ölen nicht gewährleistet. Aus diesem Grund
Für durch alternative Öle entstandene Schäden

Kältemittel
HFKW / HFO
CO₂ / HFO
HFCKW
Kohlenwasserstoffe

Typschild Beispiel:
Name plate example: