

# Mbsm.pro, compressor, Secop, GTK55AT, 170W, R134, LBP, 1/5 HP, RSIR, 579 BTU

written by Lilianne | 22 August 2022



Private Picture Copyright : [WWW.MBSM.PRO](http://WWW.MBSM.PRO)

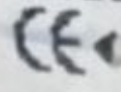
Mbsm.pro, compressor, Secop, GTK55AT, 170W, R134, LBP, 1/5 HP, RSIR, 579 BTU

---

**Mbsm.pro, Compressor,  
EG70HLR, Embraco,  
Refrigerator, 1/4 hp, Lbp,  
R134, Eg 70 Hlr**

written by Lilianne | 22 August 2022

Embraco EG 70HLR



HERMALLY PROTECTED

220-240V  
50Hz

13.3 LRA  
R 134a 1 PH



MADE IN BRAZIL



513700055 FAB 1 29-SEP-02 J03NB46P

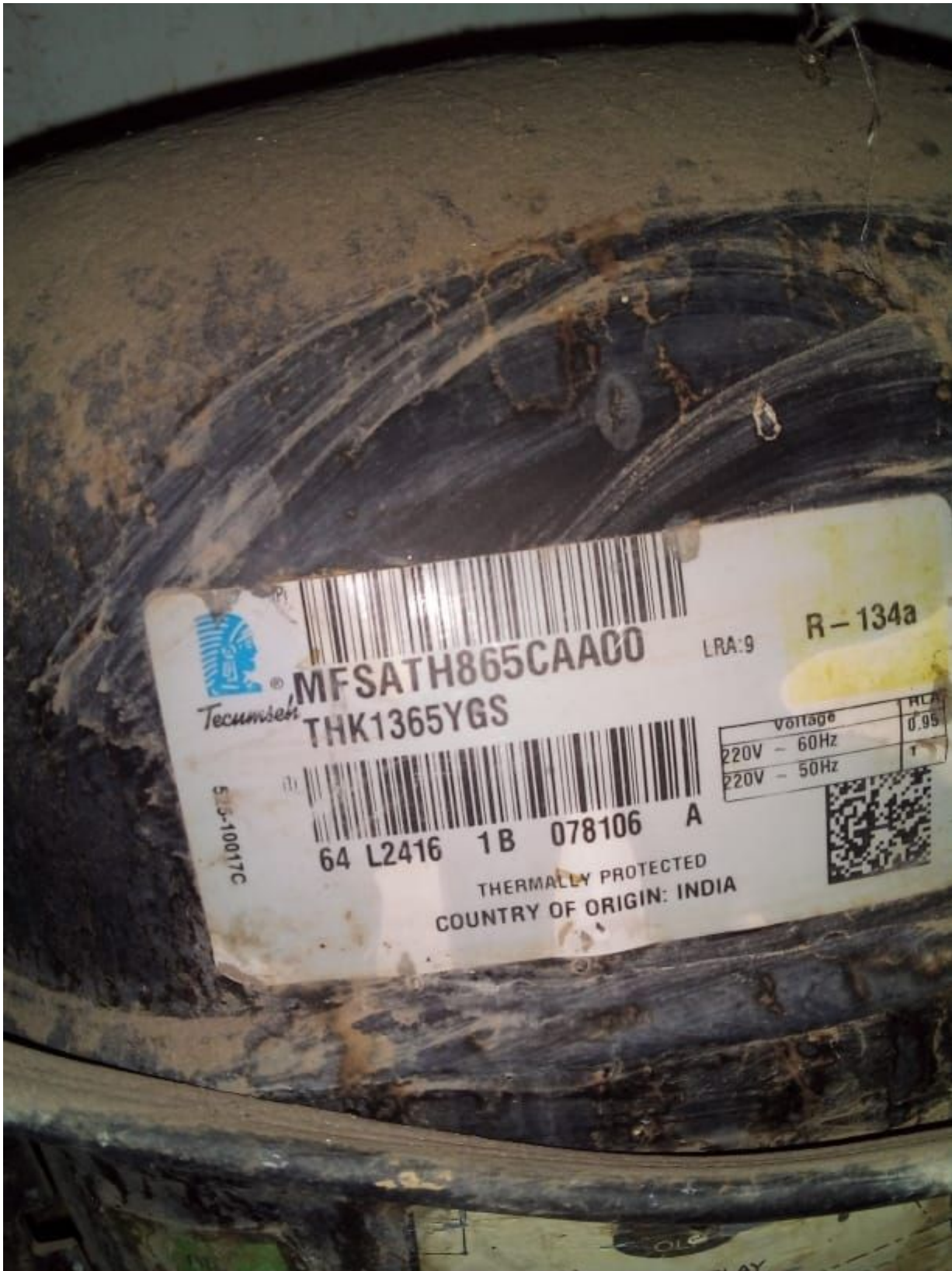


Mbsm.pro, Compressor, EG70HLR, Embraco, Refrigerator, 1/4 hp,  
Lbp, R134, Eg 70 Hlr

---

**Mbsm.pro, COMPRESSOR, THG  
1365YS, THG1365YS, 1/5 HP,  
R134, 230/1/50, TECUMSEH  
EUROPE, 1bp, 160 w, 540 btu/h**

written by Lilianne | 22 August 2022



Private Picture Copyright : [WWW.MBSM.PRO](http://WWW.MBSM.PRO)

Mbsm.pro, COMPRESSOR, THG 1365YS, THG1365YS, 1/6 HP, R134, 230/1/50, TECUMSEH EUROPE, lbp

---

# Mbsm.pro, Compressor, QD series, Compressor, Refrigerator, R134, R12, R134A, R406, R12/R134A/R406-LBP compressor performance parameter

written by Lilianne | 22 August 2022



Mbsm.pro, Compressor, QD series, Compressor, Refrigerator, R134, R12, R134A, R406, R12/R134A/R406-LBP compressor performance parameter

---

# Hitachi Compressor, LBP, R134a, FL1152-RG, 1/6 Hp, 155W, série R012

written by Lilianne | 22 August 2022

Code No.	Model	HP	Capacity (W)	Current (A)	Efficiency COP (w/w)	Voltage / Frequency
<b>R134a Models</b>						
R012001	FL 06S34-TAB	1/12	85	0.70	0.93	220V – 240V / 50Hz
R012002	FL 0739-SQ	1/10	114	0.72	1.20	
R012003	FL 0847-SD	1/8	130	0.83	1.19	
R012005	FL 1152-SB	1/6	143	0.82	1.27	
R012006	FL 1257-SR	1/5	160	0.90	1.25	
R012007	FL 14S62-TAD	1/5	175	0.95	1.30	
R012008	FL 1568-SQ	1/4	200	1.11	1.30	
R012009	FL 20S88-TAC	1/3	255	1.50	1.25	
R012010	FL1888-SE	1/3	245	1.51	1.25	
<b>R600a Models</b>						
	CL 0545-SZ	1/12	62	0.70	1.12	220V – 240V / 50Hz
	CL 1297-SA	1/5	156	0.90	1.46	
	CL 1310-SA	1/5+	163	0.95	1.48	
<b>R600a Models (Inverter)</b>						
	CL 1588-DZ	1/6	134	0.83	1.62	220V – 240V / 50Hz
	CL 1610-DL	1/5	160	0.90	1.65	

Private Picture Copyright : WWW.MBSM.PRO

HITACHI FL1152-RG  
220V 50/60Hz OIL 2010.04.27  
SERIAL NO. 00542 HFC-134a  
⚠ WARNING | HIGH TEMPERATURE  
ELECTRIC SHOCK DO NOT TOUCH H24



60Hz	FL1462-P*	6.2	180	154	615	350	St		RSIR	10.5	200	
	FL1462-P*	6.2	210	180	717	310	St		RSCR	11.8	216	
	FL1568-P*	6.8	210	180	717	310	St		RSCR	11.5	217	
	FL1675-P*	7.5	233	200	795	300			RSIR	10.8	216	
	FL1875-P*	7.5	225	193	768	300		OC	RSIR	11.9	211	
	FL1875-P*	7.5	255	219	871	300		OC	RSCR	11.9	216	
	FL0634-U*	3.4	98	84	335	270	St		RSIR	8.3	179	
	FL0739-U*	3.9	114	98	389	270	St		RSIR	8.3	179	
	FL1052-U*	5.2	147	126	502	270	St		RSIR	8.1	179	
127V	FL1152-U*	5.2	155	133	529	240	St		RSIR	9.0	180	
60Hz	FL1262-U*	6.2	173	148	591	320	St		RSIR	9.8	195	
	FL1462-U*	6.2	180	154	615	350	St		RSIR	10.5	200	
	FL1568-U*	6.8	208	178	710	310	St		RSCR	11.5	216	
	FL1568-U*	6.8	228	196	778	310	St		RSIR	10.5	200	
	FL1875-U*	7.5	225	193	768	300		OC	RSIR	11.1	216	
200V	FL1875-T*	7.5	200	232	172	683	300		OC	IR	11.1	211
50/60Hz	FL2088-T*	8.8	263	290	226	898	300		OC	IR	11.1	211
	FL0634-R*	3.4	98	84	335	270	St		RSIR	8.0	179	
	FL0739-R*	3.9	115	99	393	270	St		RSIR	8.0	179	
	FL0845-R*	4.5	122	105	417	240	St		RSIR	8.7	180	
220V	FL1052-R*	5.2	150	129	512	240	St		RSIR	8.9	180	
60Hz	FL1152-R*	5.2	155	133	529	270	St		RSIR	8.1	179	
	FL1262-R*	6.2	162	139	553	320	St		RSIR	9.8	195	
	FL1462-R*	6.2	207	178	707	300	St		RSIR	10.6	196	
	FL1568-R*	6.8	228	196	778	310	St		RSIR	10.5	200	
	FL1568-R*	6.8	181	155	618	300	St		RSCR	11.5	216	
	FL1875-R*	7.5	238	204	813	300		OC	RSIR	11.1	216	
	FL0634-S*	3.4	95	82	324	240	St		RSCR	9.0	180	
	FL0634-S*	3.4	82	70	280	270	St		RSIR	7.8	179	
	FL0734-S*	3.4	95	82	326	240	St		RSCR	9.0	180	

Private Picture Copyright : [WWW.MBSM.PRO](http://WWW.MBSM.PRO)

Mbsm\_dot\_pro\_private\_PDF\_FL1152-RGTélécharger

**Mbsm . pro , PDF , DAEWOO  
COMPRESSOR, HPL23YH-5, 199W,  
1/4 Hp, R134A , 90G**

written by Lilianne | 22 August 2022



Private Picture Copyright: [WWW.MBSM.PRO](http://WWW.MBSM.PRO)

Mbsm\_dot\_pro\_private\_PDF\_HPL23YH-5Télécharger  
Mbsm\_dot\_pro\_private\_PDF\_HPL23YH-5-2Télécharger



Private Picture Copyright: [WWW.MBSM.PRO](http://WWW.MBSM.PRO)



---

**Kulthorn, compressor,  
Kulthorn compressor, c-  
qn76l6f, c-qn76l6f-l, 1/10  
Hp, 1Ph, Serie C-q, R134a, 76  
watt, Low back pressure,**

# 200-220V/50hz, 220v/60hz, Compressor modifier

written by Lilianne | 22 August 2022

Kulthorn, compressor, Kulthorn compressor, c-qn76l6f, 1/10 Hp, 1Ph, Serie C-q, R134a, 76 watt, Low back pressure, 200-220V/50hz, 220v/60hz, Compressor modifier

## Compressor Motor Protectors

Each compressor incorporates a motor protection device or system. Generally, the larger the compressor, the more sophisticated the motor protector.

It is essential that an electric motor is protected against conditions that could otherwise result in damage to the motor or to the electrical supply system. For this reason, every Kulthorn compressor is supplied with a motor protector, sometimes referred to as an overload. The more expensive the compressor, the greater is the economic justification for specifying a motor protector that has the ability to protect over a wider range of conditions.

### 1. External Motor Protectors

A smaller compressor (such as an AZ, AE or WJ) is fitted with an external motor protector. Most commonly, this is a compact, cylindrical device that contains a snapaction bimetallic disc. The protector is mounted in contact with the surface of the compressor housing, inside the terminal guard. The compressor current passes through the bimetallic disc. The resistance of this disc causes the disc temperature to increase as the motor current increases. There is usually

a small heater, located under the disc and connected in series with the disc itself. This heater further raises the temperature of the disc. There is also the impact of the compressor shell temperature, and a hot compressor will further increase the disc temperature. The temperature of the disc is thus influenced by the combined effects of –

- the compressor motor current
- the compressor shell temperature

When the bimetallic disc reaches a predetermined temperature (often either 105°C or 120°C) the disc will snap open, and power supply to the compressor will be interrupted.

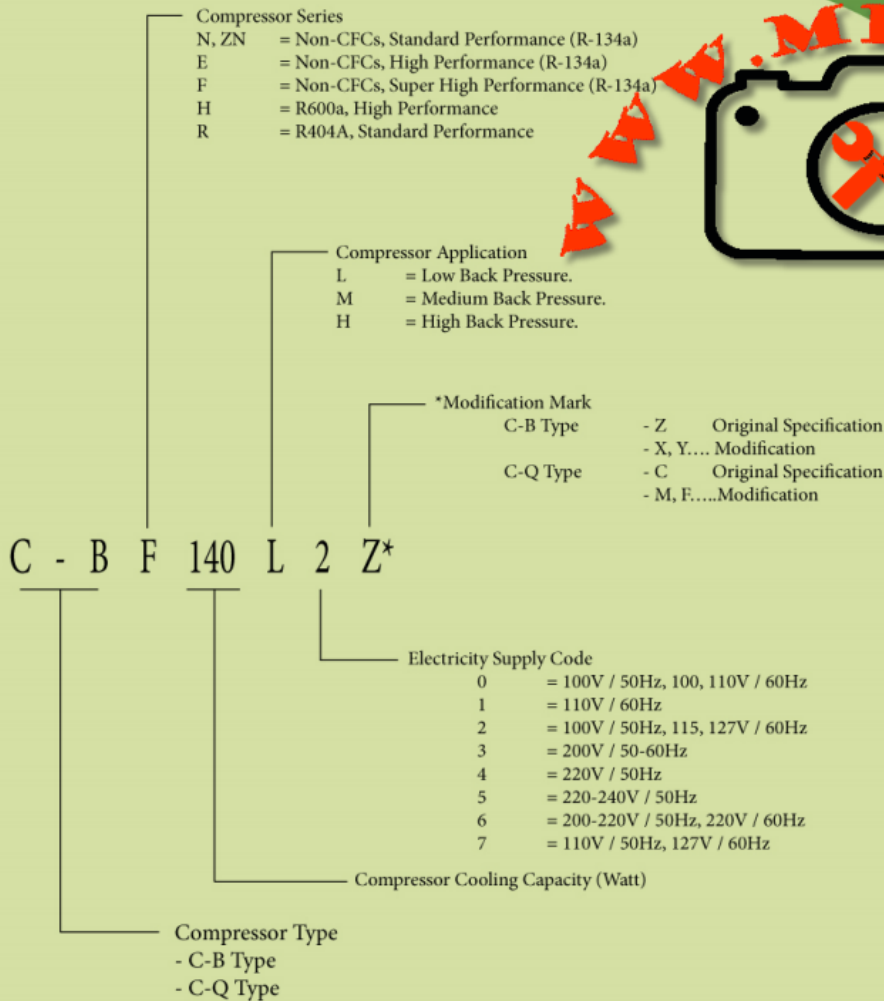
The compressor will cool, and at a reduced disc temperature the protector will reset and the compressor will restart, or attempt to restart. If the abnormal condition that caused the protector to trip in the first place still exists, the compressor is likely to continue to cycle on the overload until that condition is corrected.

There are two situations where a motor protector is expected to operate.

2. When the compressor is running under extreme conditions.
3. When the compressor is in a locked rotor condition. This is a situation where the compressor cannot start because the voltage is too low, the system pressures are outside the range for which the compressor is approved, there is internal damage to the compressor, or there is some other reason why the compressor is incapable of starting



## Model Number System



Private Picture Copyright : [WWW.MBSM.PRO](http://WWW.MBSM.PRO)

Mbsm\_dot\_pro\_private\_PDF\_2019-06-13\_110312\_technical\_bulletinT  
 télécharger

Mbsm\_dot\_pro\_private\_PDF\_kpccatalogTélécharger

Mbsm\_dot\_pro\_private\_PDF\_KULTHORN-CATALOGUE\_webTélécharger

Mbsm\_dot\_pro\_private\_PDF\_Kulthorn-CatalogTélécharger

Mbsm\_dot\_pro\_private\_PDF\_Model-Number-SystemTélécharger



# KULTHORN

## COMPRESSOR

Private Picture Copyright : [WWW.MBSM.PRO](http://WWW.MBSM.PRO)



Name: Kulthorn Premier Company Limited (KPC)  
 Established: December 1982  
 Registered Capital: Baht 1,125 Million  
 Address: 446/3 Moo 9 Chachoengsao – Nakornratchasima Road,  
 Kabinburi Industrial Estate, Nongki, Kabinburi, Prachinburi 25160, Thailand  
 Telephone: (037) 204835, 455516  
 Fax: (037) 455525, 204844  
 E-mail: sales\_kpc@kulthorn.com  
 kamjorn@kulthorn.com  
 Employees: 900 persons  
 Land area: 91 rai (145,600 m<sup>2</sup>)  
 Building of area: 41,500 m<sup>2</sup>  
 Business Products: Hermetic Reciprocating Compressor (Scotch Yoke Mechanism)  
 (Product under license SANYO Japan) Size 30-250 Watt.  
Compressor series / Refrigerant  
 C-BN, C-BZN, C-BE, C-BF / R-134a  
 C-QN / R-134a  
 C-BH / R-600a  
 C-BR / R-404A  
 Shareholder: Kulthorn Kirby Public Company Limited 100%  
 Customers: **Domestic** – Haier, Sanyo, Toshiba, Hitachi, Daewoo, Samsung, Sanden, etc.  
**Total = 35%**  
**Export** – Daewoo, Sanyo Group, GE, Sanden, Haier, Singer, Videocon,  
 Toshiba, etc.  
**Total = 65%**  
 Quality System: ISO 9001:2000 Certified by TUV Nord Year 2003  
 Q-Mark Certified by F.T.I. Year 2007



Private Picture Copyright: WWW.MBSM.PRO

# COMPRESSEUR, DANFOSS, SECOP, NL7.3MF, 105G6772 195B0370, 105G, 6773, R134a, 1 / 4L Hp, cylindrée 7.27 cc, displacement 7.27 cc, MBP

written by Lilianne | 22 August 2022

mbsm.pro, COMPRESSEUR, DANFOSS, SECOP, NL7.3MF, 105G6772  
 195B0370, 105G, 6773, R134a, 1 / 4L Hp++big, cylindrée 7.27  
 cc, displacement 7.27 cc, MBP

## Détails techniques

220/230V 50/60Hz

puissance 1/4L HP – cylindrée 7,27 cc

gaz R134a MBP

DANFOSS 105G6772

## **FRIULINOX**

**FriulinoxArmoireréfrigérée** AF12-14, AF12-14 VTR, AF12-14 VTRP, AF14, AF6-1, AF6-7, AF6-7 VTR, AF7, AF7 VTR, AF7-14, AG60 GOLD, AG60 H2O, AG60 SILVER, AG60 SILVERP, AG60P, AL-EN SUPER, AL-EN1, AL-EN1 SUPER, AL-EN1P, AL-EN2, AL-EN2 SUPER, AL-ENP, AP12-14, AP14, AP6, AP6-12, AP6-7, AP7, AP7-14, AR12-14, AR12-14 VTR, AR14, AR6-12, AR6-12 VTR, AR6-7, AR6-7 VTR, AR7, AR7-14, AR7-14 VTR, AR-EN GOLD, AR-EN SILVER, AR-EN1, AR-EN1 GOLD, AR-EN1 VTR, AR-EN2, AR-ENP, ARF142, ARP142, ARP-EN1, ARP-EN2, EN GOLD, EN P, EN SILVER, EN1, EN1 GOLD, EN1 H2O, EN1 H2O SILVER, EN1 SILVER, EN1 VTR, EN2, EN2 H2O

**FriulinoxCellulede** refroidissement ARP122

**FriulinoxVitrineréfrigérée** AFP122, AFP142, ARF122

## **INFRICO**

**InfricoArmoireréfrigérée** AN-502-MX

**InfricoComptoirneutre** réfrigérée ME-1000-BAND, ME-1000-II, MP-1740-CN

**InfricoTableréfrigérée** BMPP-1500-EN, BMPPF-1500-II, EB-1500-II, ME-1000-PIZZA

...et d'autres dispositifs



Private Picture Copyright : [WWW.MBSM.PRO](http://WWW.MBSM.PRO)

Mbsm\_dot\_pro\_private\_PDF\_nl7.3mf-1Télécharger

---

**Tecumseh, competitive, cross,  
RG211-12, RG211, 1/4 hp ,  
1150 BTU, R134a, 1.29 FLA,  
12.0 LRA, 220v-240v0/60hz**

written by Lilianne | 22 August 2022

Mbsm\_dot\_pro\_private\_PDF\_tecumseh\_competitive\_cross\_refTélécharger

Tecumseh, competitive, cross, RG211-12, 1/4 hp , 1150 BTU,

R134a,1.29 FLA, 12.0 LRA, 220v-240v0/60hz

Americold BW & Hupp App-Ref Volt/Hz/Ph Btu/h Tecumseh Model  
LT-R134a (continued)

GP16FE	LT-R134a	115/60/1	1440	AEA2413YXA	
GRG105-1	LT-R134a	115/60/1	580	AEA1360YXA	
GRG106-1	LT-R134a	115/60/1	670	AEA1360YXA	
GRG107-1	LT-R134a	115/60/1	740	TPA1380YXA	
GRG108-1	LT-R134a	115/60/1	840	TPA1380YXA	
GRG109-1	LT-R134a	115/60/1	970	TPA1390YXA	
GRG205-1	LT-R134a	115/60/1	580	AEA1360YXA,	OIL COOLER
GRG206-1	LT-R134a	115/60/1	670	AEA1360YXA	
GRG207-1	LT-R134a	115/60/1	740	TPA1380YXA	
GRG208-1	LT-R134a	115/60/1	840	TPA1380YXA	
GRG209-1	LT-R134a	115/60/1	970	TPA1390YXA	
GRH104-1	LT-R134a	115/60/1	475	N/A	
GRH105-1	LT-R134a	115/60/1	590	AEA1360YXA	
GRH106-1	LT-R134a	115/60/1	675	AEA1360YXA	
GRH107-1	LT-R134a	115/60/1	770	TPA1380YXA	
GRH108-1	LT-R134a	115/60/1	880	TPA1380YXA	
GRH109-1	LT-R134a	115/60/1	990	TPA1390YXA	
GRH110-1	LT-R134a	115/60/1	1050	AEA2410YXA,	TP1410YXA
RF107-1	LT-R134a	115/60/1	740	TPA1380YXA	
RF108-1	LT-R134a	115/60/1	858	TPA1380YXA	
RG107-1	LT-R134a	115/60/1	730	TPA1380YXA	
RG108-1	LT-R134a	115/60/1	845	TPA1380YXA	
RG109-1	LT-R134a	115/60/1	910	TPA1390YXA	
RG111-1	LT-R134a	115/60/1	1150	AEA2410YXA,	TPA1410YXA
RG113-1	LT-R134a	115/60/1	1300	AEA2413YXA	
RG211-1	LT-R134a	115/60/1	1150	AEA2410YXA,	TPA1410YXA
RG213-1	LT-R134a	115/60/1	1325	AEA2413YXA	
RH106-1	LT-R134a	115/60/1	674	AEA1360YXA	
RH107-1	LT-R134a	115/60/1	730	TPA1380YXA	
RH108-1	LT-R134a	115/60/1	840	TPA1380YXA	
RH109-1	LT-R134a	115/60/1	980	AEA2410YXA,	TPA1410YXA

RH110-1 LT-R134a 115/60/1 990 AEA2410YXA, TPA1410YXA  
LT-R22  
CL25A LT-R22 115/60/1 1210 AEA1411EXA  
CL33A LT-R22 115/60/1 1520 N/A  
L50A LT-R22 115/60/1;  
208-230/60/1 SPECIAL N/A  
OSG107-1 LT-R22 115/60/1 766 AEA0415EXA  
OSG207-1 LT-R22 115/60/1 766 AEA0415EXA, OIL COOLER  
OSG212-1 LT-R22 115/60/1 1254 AKA9428EXA  
LT-R404A  
HP310-1 LT-R404A 115/60/1 1080 AEA2410ZXA  
HP317-1 LT-R404A 115/60/1 1700 N/A  
HP321-1 LT-R404A 115/60/1 2000 AJA2419ZXA  
HP327-1 LT-R404A 115/60/1 2580 AJA2425ZXA  
MP12FG LT-R404A 220-230/60/1 2111 N/A  
MP14FG LT-R404A 220-230/60/1 2523 AJA2525ZXD  
MT-R12  
AYCM33 MT-R12 115/60/1 2800 N/A  
AYM33 MT-R12 115/60/1 2800 N/A  
AYM50 MT-R12 115/60/1 SPECIAL N/A  
CM25 MT-R12 115/60/1 2540 N/A  
CM33 MT-R12 115/60/1 3160 AKA9434AXA

Americold BW & Hupp	App-Ref	Volt/Hz/Ph	Btu/h	Tecumseh Model
<b>LT-R134a (continued)</b>				
GP16FE	LT-R134a	115/60/1	1440	AEA2413YXA
GRG105-1	LT-R134a	115/60/1	580	AEA1360YXA
GRG106-1	LT-R134a	115/60/1	670	AEA1360YXA
GRG107-1	LT-R134a	115/60/1	740	TPA1380YXA
GRG108-1	LT-R134a	115/60/1	840	TPA1380YXA
GRG109-1	LT-R134a	115/60/1	970	TPA1390YXA
GRG205-1	LT-R134a	115/60/1	580	AEA1360YXA, OIL COOLER
GRG206-1	LT-R134a	115/60/1	670	AEA1360YXA
GRG207-1	LT-R134a	115/60/1	740	TPA1380YXA
GRG208-1	LT-R134a	115/60/1	840	TPA1380YXA
GRG209-1	LT-R134a	115/60/1	970	TPA1390YXA
GRH104-1	LT-R134a	115/60/1	475	N/A
GRH105-1	LT-R134a	115/60/1	590	AEA1360YXA
GRH106-1	LT-R134a	115/60/1	675	AEA1360YXA
GRH107-1	LT-R134a	115/60/1	770	TPA1380YXA
GRH108-1	LT-R134a	115/60/1	880	TPA1380YXA
GRH109-1	LT-R134a	115/60/1	990	TPA1390YXA
GRH110-1	LT-R134a	115/60/1	1050	AEA2410YXA, TP1410YXA
RF107-1	LT-R134a	115/60/1	740	TPA1380YXA
RF108-1	LT-R134a	115/60/1	858	TPA1380YXA
RG107-1	LT-R134a	115/60/1	730	TPA1380YXA
RG108-1	LT-R134a	115/60/1	845	TPA1380YXA
RG109-1	LT-R134a	115/60/1	910	TPA1390YXA
RG111-1	LT-R134a	115/60/1	1150	AEA2410YXA, TPA1410YXA
RG113-1	LT-R134a	115/60/1	1300	AEA2413YXA
RG211-1	LT-R134a	115/60/1	<b>1150</b>	AEA2410YXA, TPA1410YXA
RG213-1	LT-R134a	115/60/1	1325	AEA2413YXA
RH106-1	LT-R134a	115/60/1	674	AEA1360YXA



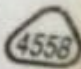
RG211-12

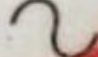


3066



0027505

220V-240V 

50/60 Hz 

1.29 FLA 12.0 LRA

7:51 2807

3/5/1998

AMERICOLD

THERMALLY PROTECTED

R134a  1623-3566



---

**QD35HG, 1/11 HP, 220V,  
SIKELAN, R134a, mini  
congélateur, petit bar  
réfrigérateur, réfrigérateur  
distributeur, refroidisseur  
d'eau, série L, RSIR, 75 w**

written by Lilianne | 22 August 2022





Private Picture Copyright: [WWW.MBSM.PRO](http://WWW.MBSM.PRO)

## 1. Product Performance

1) QD35HG, série L , utilisez le réfrigérant R134A;

- 2) Application de tension 220V à 240V;
- 3) Fréquence pour 50 / 60HZ;
- 4) Type de moteur: RSIR;
- 5) Type de refroidissement: ST;
- 6) Le dispositif de démarrage est le relais PTC;
- 7) Application: basse contre-pression;
- 8) La puissance nominale est de 1 / 11HP;
- 9) Le COP est de 1,05 avec une capacité de refroidissement de 75 W.

Selon les conditions de test (ASHRAE)

Température d'évaporation: -23,3 degrés

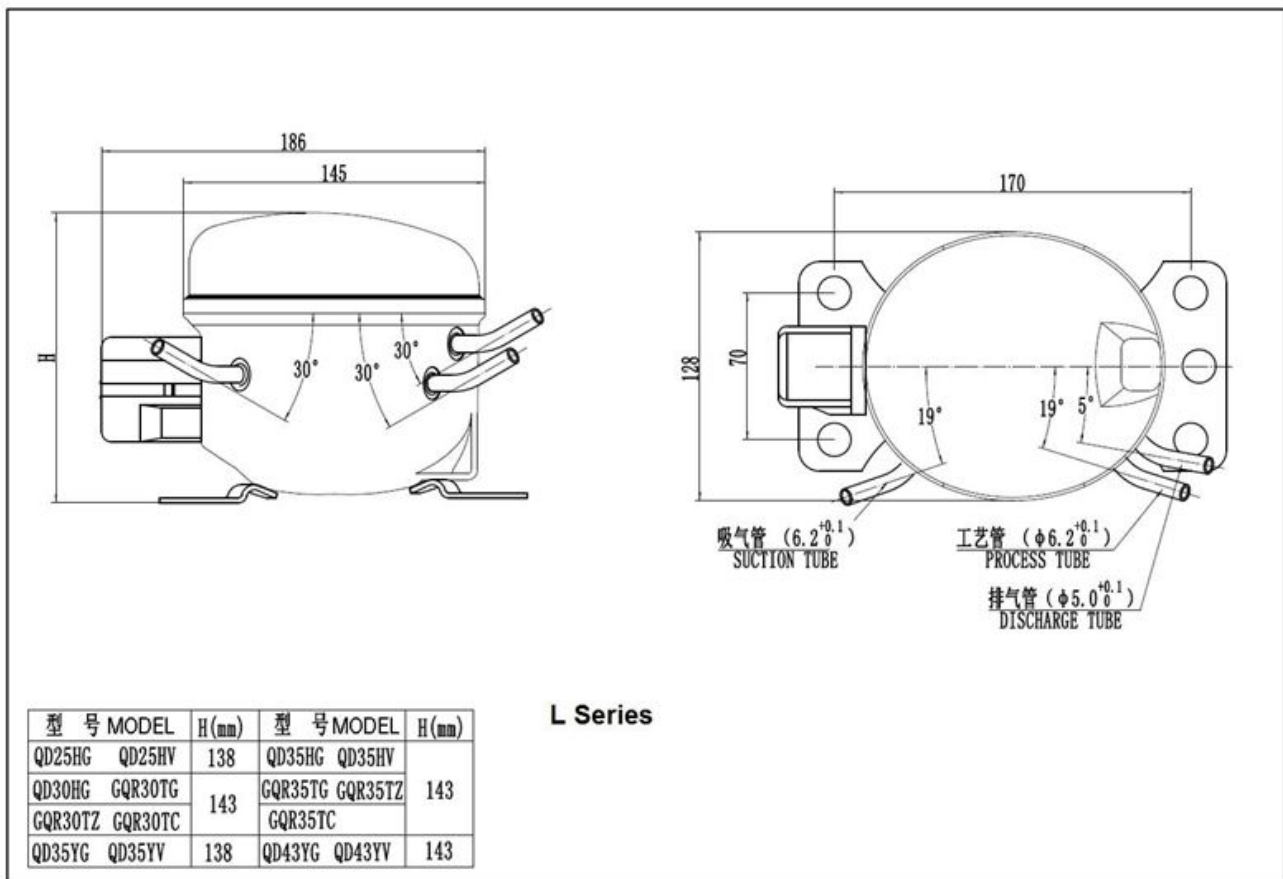
Température ambiante: 32,2 degrés

Température de sous-refroidissement: 32,2 degrés

Température de condensation: 54,4 degrés

Température d'aspiration: 32,2 degrés

Serial	Model	HP	V/Hz	Dispt (cm <sup>3</sup> )	Cooling Capacity (ASHRAE)						Motor type	Starting Device	Starting capacitor (uF)	Running capacitor (uF)	Cooling Type
					Test Conditions: -23.3°C (-10F)										
					Capacity (W)	Capacity (Btu/h)	Input Power (W)	Current (A)	COP	EER					
L	QD25HG	1/12	220-240V/50-60Hz	2.5	55	188	52	0.55	1.05	3.61	RSIR	PTC Starting Relay	/	/	ST
	QD30HG	1/12		3.0	65	222	62	0.63	1.05	3.58	RSIR		/	/	ST
	QD35HG	1/11		3.5	75	256	71	0.68	1.05	3.60	RSIR		/	/	ST
	ADW43	1/6-		4.3	110	375	100	1.0	1.1	3.75	RSIR		/	/	ST
	ADW51	1/6		5.1	125	427	104	1.1	1.2	4.10	RSIR		/	/	ST
	ADW57	1/5-		5.7	135	461	112	1.15	1.2	4.11	RSIR		/	/	ST
MS	ADW43	1/6-		4.3	110	375	100	1.0	1.1	3.75	RSIR	PTC/Current Starting Relay	/	/	ST
	ADW51	1/6		5.1	125	427	104	1.1	1.2	4.10	RSIR		/	/	ST
	ADW57	1/5-		5.7	135	461	112	1.15	1.2	4.11	RSIR		/	/	ST
	ADW66	1/4-		6.6	165	563	132	1.2	1.25	4.27	RSIR		/	/	ST
	ADW77	1/4		7.7	185	631	148	1.4	1.25	4.27	RSIR		/	/	ST
	ADW86	1/4+		8.6	200	682	160	1.45	1.25	4.27	RSIR		/	/	ST
MK	ADW91	1/3-		9.1	220	751	176	1.65	1.25	4.27	RSIR		/	/	ST
	ADW66	1/4-		6.6	165	563	132	1.2	1.25	4.27	RSIR		/	/	ST
	ADW77	1/4	7.7	185	631	148	1.4	1.25	4.27	RSIR	/		/	ST	
	ADW86	1/4+	8.6	200	682	160	1.45	1.25	4.27	RSIR	/		/	ST	
	ADW91	1/3-	9.1	220	751	176	1.65	1.25	4.27	RSIR	/		/	ST	
	ADW110	3/8	11.0	270	921	215	2.05	1.25	4.28	RSIR	/		/	F	
WQ	ADW91	1/3-	9.1	220	751	176	1.65	1.25	4.27	RSIR	Current Starting Relay		/	/	F
	ADW110	3/8	11.0	270	921	215	2.05	1.25	4.28	RSIR			/	/	F
	ADW128	3/8+	12.8	320	1092	256	2.3	1.25	4.27	CSIR		80	/	F	
	ADW142	1/2-	14.2	350	1194	280	2.6	1.25	4.27	CSIR		80	/	F	
	ADW153	1/2	15.3	380	1297	304	2.8	1.25	4.27	CSIR		80	/	F	



Private Picture Copyright : [WWW.MBSM.PRO](http://WWW.MBSM.PRO)

## 1. Product Performance

- 1) QD35HG, série L, utilisez le réfrigérant R134A;
- 2) Application de tension 220V à 240V;
- 3) Fréquence pour 50 / 60HZ;
- 4) Type de moteur: RSIR;
- 5) Type de refroidissement: ST;
- 6) Le dispositif de démarrage est le relais PTC;
- 7) Application: basse contre-pression;
- 8) La puissance nominale est de 1/11 HP;
- 9) Le COP est de 1,05 avec une capacité de refroidissement de 75 W.

Ce modèle a passé les certificats CB / VDE et les personnages principaux comme ci-dessous

- 1) Petite taille;
- 2) haute efficacité et fiabilité;
- 3) faible bruit et vibration;

4) appliqué au mini réfrigérateur, au distributeur d'eau, etc.

basé sur la condition d'essai (ASHRAE)

température d'évaporation: -23,3 degrés

Température ambiante: 32,2 degrés

Température de sous-refroidissement: 32,2 degrés

Température de condensation: 54,4 degrés

Température d'aspiration: 32,2 degrés

## 2. Spécifications du compresseur

En série	Modèle	HP	Tension / Fréquence (V / Hz)	Déplacement (cm <sup>3</sup> )	Capacité de refroidissement ASHRAE																				Type de moteur	Dispositif de démarrage	Condensateur de démarrage (uF)	Condensateur de fonctionnement (uF)	Type de refroidissement				
					-35 ° C (-31F)			-30 ° C (-22F)			-25 ° C (-13F)			Conditions d'essai: -23,3 ° C (-10F)					-20 ° C (-4F)		-15 ° C (5F)		-10 ° C (10 ° F)							-5 ° C (23 F)		0 ° C (32 F)	
					W	Btu / h	W	Btu / h	W	Btu / h	Capacité (W)	Capacité (Btu / h)	Puissance d'entrée (W)	Courant (A)	FLIC	EER	W	Btu / h	W	Btu / h	W	Btu / h	W	Btu / h						W	Btu / h	W	Btu / h
L	QD25HG	1/12	220 à 240 V / 50 à 60 Hz	2,5	25	85	33	113	42	143	55	188	52	0,55	1,05	3,61	69	235	86	293	107	365	134	457	168	573	RSIR	/	/	ST			
	QD30HG	1/12		3,0	30	102	39	133	59	171	65	222	62	0,63	1,05	3,58	81	276	102	348	127	433	159	543	198	676	RSIR	/	/	ST			
	QD35HG	1/11		3,5	34	116	44	150	58	198	75	256	71	0,68	1,05	3,60	94	321	117	399	147	502	183	624	229	781	RSIR	/	/	ST			
	ADW43	1 / 6-		4.3	50	171	65	222	85	290	110	375	100	1.0	1.1	3.75	138	471	172	587	215	734	269	918	336	1146	RSIR	/	/	ST			
	ADW51	1/6		5.1	57	194	74	252	96	328	125	427	104	1.1	1.2	4.10	156	532	195	665	244	833	305	1041	382	1303	RSIR	/	/	ST			
ADW57	1 / 5-	5,7		62	212	80	273	104	355	135	461	112	1,15	1.2	4.11	170	580	211	720	264	901	330	1126	412	1406	RSIR	/	/	ST				
SP	ADW43	1 / 6-		4.3	50	171	65	222	85	290	110	375	100	1.0	1.1	3.75	138	471	172	587	215	734	269	918	336	1146	RSIR	/	/	ST			
	ADW51	1/6		5.1	57	194	74	252	96	328	125	427	104	1.1	1.2	4.10	156	532	195	665	244	833	305	1041	382	1303	RSIR	/	/	ST			
	ADW57	1 / 5-		5,7	62	212	80	273	104	355	135	461	112	1,15	1.2	4.11	170	580	211	720	264	901	330	1126	412	1406	RSIR	/	/	ST			
	ADW66	1 / 4-		6,6	75	256	98	334	127	433	165	563	132	1.2	1,25	4,27	206	703	258	880	322	1099	403	1375	504	1720	RSIR	/	/	ST			
	ADW77	1/4		7,7	84	287	109	372	142	485	185	631	148	1,4	1,25	4,27	231	788	289	986	361	1232	452	1542	565	1928	RSIR	/	/	ST			
	ADW86	1/4 +		8,6	91	310	118	403	154	525	200	682	160	1,45	1,25	4,27	250	853	313	1068	391	1334	488	1665	610	2081	RSIR	/	/	ST			
LM	ADW91	1 / 3-		9.1	100	341	130	444	169	577	220	751	176	1,65	1,25	4,27	275	938	344	1174	430	1467	537	1832	671	2289	RSIR	/	/	ST			
	ADW43	1 / 6-		4.3	50	171	65	222	85	290	110	375	100	1.0	1.1	3.75	138	471	172	587	215	734	269	918	336	1146	RSIR	/	/	ST			
	ADW51	1/6		5.1	57	194	74	252	96	328	125	427	104	1.1	1.2	4.10	156	532	195	665	244	833	305	1041	382	1303	RSIR	/	/	ST			
	ADW57	1 / 5-	5,7	62	212	80	273	104	355	135	461	112	1,15	1.2	4.11	170	580	211	720	264	901	330	1126	412	1406	RSIR	/	/	ST				
	ADW66	1 / 4-	6,6	75	256	98	334	127	433	165	563	132	1.2	1,25	4,27	206	703	258	880	322	1099	403	1375	504	1720	RSIR	/	/	ST				
MK	ADW77	1/4	7,7	84	287	109	372	142	485	185	631	148	1,4	1,25	4,27	231	788	289	986	361	1232	452	1542	565	1928	RSIR	/	/	ST				
	ADW66	1 / 4-	6,6	75	256	98	334	127	433	165	563	132	1.2	1,25	4,27	206	703	258	880	322	1099	403	1375	504	1720	RSIR	/	/	ST				
	ADW77	1/4	7,7	84	287	109	372	142	485	185	631	148	1,4	1,25	4,27	231	788	289	986	361	1232	452	1542	565	1928	RSIR	/	/	ST				
	ADW86	1/4 +	8,6	91	310	118	403	154	525	200	682	160	1,45	1,25	4,27	250	853	313	1068	391	1334	488	1665	610	2081	RSIR	/	/	ST				
WQ	ADW91	1 / 3-	9.1	100	341	130	444	169	577	220	751	176	1,65	1,25	4,27	275	938	344	1174	430	1467	537	1832	671	2289	RSIR	/	/	ST				
	ADW110	3/8	11,0	123	420	160	546	208	710	270	921	215	2,05	1,25	4,28	338	1153	422	1440	527	1798	659	2249	824	2811	RSIR	/	/	F				
	ADW91	1 / 3-	9.1	100	341	130	444	169	577	220	751	176	1,65	1,25	4,27	275	938	344	1174	430	1467	537	1832	671	2289	RSIR	/	/	F				
	ADW110	3/8	11,0	123	420	160	546	208	710	270	921	215	2,05	1,25	4,28	338	1153	422	1440	527	1798	659	2249	824	2811	RSIR	/	/	F				
	ADW128	3/8 +	12,8	146	498	189	645	246	839	320	1092	256	2,3	1,25	4,27	400	1365	500	1706	625	2133	781	2665	977	3334	CSIR	80	/	F				
ADW142	1 / 2-	14.2	159	543	207	706	269	918	350	1194	280	2.6	1,25	4,27	438	1494	547	1866	684	2334	855	2917	1068	3644	CSIR	80	/	F					
ADW153	1/2	15,3	173	590	225	768	292	996	380	1297	304	2,8	1,25	4,27	475	1621	594	2027	742	2532	828	2825	1160	3958	CSIR	80	/	F					

