

Mbsm.pro, Compressor, PH31VNET, r22, 1-1/2 hp, 1-1/2 Ton, 18000 btu/h, Capacitor 45uf, 1 ph/220v

written by Lilianne | 19 November 2024

SCROLL COMPRESSOR (FOR 10-15 TONS)

MODEL	P/N	BTUH	V/Ph/Hz	LISTED PRICE	
TTA180RD00QA					
TTA100RD00PA, TTA200RD00PA	SM120	015-0228	102,800	380/3/50	43,500.00
TTA120RD00PA, TTA240RD00PA	SM148	015-0234	123,100	380/3/50	48,000.00

TRANE CDU MODEL

MODEL	P/N	BTUH	V/Ph/Hz	LISTED PRICE	
RAUP400	SM120	015-0228	102,800	380/3/50	43,500.00
RAUP500, RAUP500 (CSHA-10)	SM165	015-0235	123,200	380/3/50	52,000.00
RAUP600, RAUP600 (CSHA-15)	SM185	015-0236	143,300	380/3/50	57,500.00

ROTARY COMPRESSOR (FOR 0.75-5 TONS)

TRANE CDU MODEL	MODEL	P/N	BTUH	V/Ph/Hz	LISTED PRICE
WTK507A800/E/G/FBA	RH135VHAT	015-0156	7,777	220/1/50	4,400.00
TTK509PBSEDA	RH154VHST	015-0223	9,087	220/1/50	4,600.00
TTK509PB, WTK509A800E/G/FBA	RH165VHET	015-0240	9,603	220/1/50	4,550.00
TTK512QB, TTK512LB, TTK015QB, TTK512LB5, TTK512MB5, TTK512PB, WTK512A800E/G/FCA	RH207VRFY	015-0268	12,290	220/1/50	4,300.00
TTK515LB00CA, TTK515QB00AA	RH277VHST	015-0246	16,541	220/1/50	6,700.00
TTK518LB00DA, TTK518QB00AA, WTK518A800E/G/FCA	RH313VAGT	015-0270	18,660	220/1/50	7,000.00
TTK015QB, TTK515LB, TTK018QB, TTK518LB	PH28VNET	015-0148	16,705	220/1/50	7,000.00
TTK518LB5, TTK518MB5, TTK518PB, WTK518A800E/G/FBA	PH31VNET	015-0149	18,570	220/1/50	7,200.00
TTK518LB50HA	RH295VAST	015-0334	17,640	220/1/50	6,900.00
NON TRANE MODEL	PH33VNET	999-15043	20,395	220/1/50	7,000.00
WTK524A800E/G/FBA	PH39VPET	015-0225	23,490	220/1/50	7,600.00
TTK524MB00E/F/GA	PH41VPYT	015-0299	25,655	220/1/50	8,000.00
TTK524QB00A/BA, TTK524LB00GA					
TTK024QB, TTK524LB, TTK524MB	NH41VXBT	888-150055	25,828	220/1/50	9,200.00
TTK524PBDEGA	NH44VXBT	888-150048	26,617	220/1/50	9,100.00
NON TRANE MODEL	NH47VXBT	888-150049	29,514	220/1/50	9,300.00
TTK030QB, TTK530MB, TTK530QB, WTK530A800E/G/FCA	NH52VXBT	015-0284	33,008	220/1/50	9,200.00
TTK036QB, TTK536QB, WTK536A800E/G/FCA	NH56VXBT	015-0276	36,072	220/1/50	9,900.00
TTK036QD, TTK536QD, WTK536AD00E/G/FCA	NH56YXCT	015-0277	36,338	380/3/50	10,700.00

Mbsm.pro, Compressor, PH31VNET, r22, 1-1/2 hp, 1-1/2 Ton, 18000 btu/h, Capacitor 45uf, 1 ph/220v

Mbsm.pro, Compressor, CRAQ-0150-PFV-501, Copeland,

1-1/2 HP, 208-230V, 1 PH, 17,000 BTU, R22, R407C, Hermetic

written by Lilianne | 19 November 2024



Copeland™ Three Phase Compressor Models

TONNAGE	CR6/5 Ton	CRKQ	CR7	CR1,2,3	CRKF	CRKH	ZRK5/K3
1.5T	CR18K6-TF5	CR18KQ-TF5		CRA1-0150-TF5 CRA1-0150-TFC CRA1-0150-TFD CRC1-0175-TF5			
	CR22K6-TF5						ZR21K5-TF5
	CR24K6-TF5	CR24KQ-TF5		CRD1-0200-TF5 CRD1-0200-TFD ZR25K5-TF5			ZR21K5-TFD ZR25K5-TF5
2T	CR24K6-TFD	CR24KQ-TFD		CRE1-0225-TF5 CRE1-0225-TFD			ZR28K5-TF5
	CR28K6-TF5	CR28KQ-TF5	CR28K7-TF5				ZR28K5-TFD
	CR28K6-TFD	CR28KQ-TFD					ZR28K5-TF5
	CR30K6-TF5						ZR28K5-TFD
	CR30K6-TFD	CR30KQ-TFD		CRF1-0250-TFD CRF1-0250-TF5			ZR32K5-TF5
3T	CR32K6-TF5	CR32KQ-TF5	CR31K7-TF5	CRG3-0250-TF5 CRG3-0250-TFD			ZR32K5-TFD
	CR32K6-TFE	CR33KQ-TFD					ZR32K5-TFE
	CR35K6-TF5	CR34KQ-TF5		CRH3-0275-TF5 CRI3-0290-TF5			ZR32K5-TF5
	CR35K6-TFD	CR34KQ-TFD		CRH3-0275-TFD CRI3-0290-TFD			ZR32K5-TFD
	CR35K6-TFE	CR37KQ-TF5		CRH3-0275-TFE			ZR32K5-TFE
	CR38K6-TF5	CR37KQ-TFD		CRJ3-0300-TF5 CRJ3-0300-TFD			ZR38K5-TF5 ZR38K5-TFD
	CR38K6-TFE			CRK3-0325-TF5			ZR38K5-TFE
	CR42K6-TF5	CR41KQ-TF5 CRKQ-0325-TF5					ZR42K5-TF5
	CR42K6-TFD	CR41KQ-TFD CRKQ-0325-TFD		CRK3-0325-TFD			ZR42K5-TFD
	CR42K6-TFE	CRKQ-0325-TFE		CRK3-0325-TFE			ZR42K5-TFE
3.5T	CR47K6-TF5	CR47KQ-TF5		CRK3-0350-TF5 CRL3-0350-TF5			ZR48K5-TF5
	CR47K6-TFD	CR47KQ-TFD		CRK3-0350-TFD			ZR48K5-TFD
4T						ZR48K5-TF5 ZR48K5-TFD	

Code	Hz-Phase-Volts
PFV	60-1-208/230
PFJ	60-1-265
TF5	60-3-200/230
TFD	60-3-460
TFE	60-3-575

www.Mbsm.pro



copeland-service-cr-compressor-cross-reference-manual-guide-en-us-1569036Download

The compressor model CRAQ-0150-PFV-501 is a Hermetic compressor manufactured by Copeland. It is a 1-phase, 208/230V compressor designed for air conditioning applications. The compressor uses HCFC or R-22 refrigerant and operates at 60Hz.

Here are some of the key specifications of the CRAQ-0150-PFV-501 compressor:

- **Capacity:** 18,300 – 23,900 BTU/hr
- **Power:** 1,910 – 1,520 W
- **Current:** 8.8 – 7.0 Amps
- **EER:** 9.6 – 15.7 BTU/Wh
- **Mass Flow:** 268 – 308 lbs/hr
- **Sound Power:** 72 – 77 dBA
- **Vibration:** 1.7 – 2.7 mils (peak-peak)
- **Displacement:** 2.00 in³/Rev
- **Overall Length:** 9.44 in
- **Overall Width:** 9.13 in
- **Overall Height:** 13.56 in
- **Mounting Length:** 7.50 in
- **Mounting Width:** 7.50 in
- **Mounting Height:** 13.94 in
- **Suction Size:** 5/8 in
- **Discharge Size:** 3/8 in
- **Initial Oil Charge:** 55 oz
- **Oil Recharge:** 51 oz
- **Net Weight:** 61.0 lbs
- **Internal Free Volume:** 345.0 in³

This compressor is no longer in production and has been replaced by newer, more efficient models. However, it is still a popular choice for replacement applications due to its reliability and performance.

Mbsm.pro, Compressor, QX-34F050, 2 hp, r22, GREE, Rotary Compressor, 20185Btu

written by Lilianne | 19 November 2024



QX-34F050 is a model number for a rotary compressor, specifically the Gree Landa Compressor QX-34F050gA.

Key Features:

- **Refrigerant:** R22
- **Input Power:** 1810W
- **Cooling Capacity:** 20185 BTU/H
- **Voltage:** 220-240V, 50Hz
- **Applications:** Air conditioning, dryers, refrigeration,

chillers, etc.



- ✘
- ✘
- ✘
- ✘

**Mbsm.pro, AJ5515E-FZ3C,
AJ5515E, AJ5EL1GF602,
Tecumseh, 1-1/4 hp, R22,
Tecumseh compressor, Hermetic**

piston

written by Lilianne | 19 November 2024



Mbsm.pro, AJ5515E-FZ3C, AJ5515E, AJ5EL1GF602 , Tecumseh, 1-1/4 hp, R22, Tecumseh compressor, Hermetic piston

Mbsm.pro, 104L2120, DANFOSS, REFRIGERATION, Reciprocating, compressor, SC18CM, 3/4 hp, 1bp, r22, 220v/50hz/1ph

written by Lilianne | 19 November 2024



Mbsm.pro, 104L2120, DANFOSS, REFRIGERATION, Reciprocating, compressor, SC18CM, 3/4 hp, 1bp, r22, 220v/50hz/1ph

Mbsm.pro, Compressor , Air Conditioning, r22, Tecumseh, AGC5568EXG, AG144UT-001-J7,

**5-1/2 HP, 4 ton, R-22, 56700
btu, HBP/AC, 460V 3ph 60Hz
380-420V**

written by Lilianne | 19 November 2024



Mbsm.pro, Compressor , Air Conditioning, r22, Tecumseh, AGC5568EXG, AG144UT-001-J7, 5-1/2 HP, 4 ton, R-22, 56700 btu, HBP/AC

**Mbsm.pro, compressor, ZR57KE-
TFD, 4.8 hp, 13.900 w, 47500
btu, r22, emerson, copeland,
scroll, ZR Series,
380-420□/50H2, 3 Ph**

written by Lilianne | 19 November 2024



Mbsm.pro, compressor, ZR57KE-TFD, 4.8 hp, 13.900 w, 47500 btu, r22, emerson, copeland, scroll, ZR Series, 380-420□/50H2, 3 Ph

**Mbsm.pro, compressor, Gree,
Air conditioner, 0XSH-
F375E090, 0XSH-F375, 22100
BTU, 37.50 cm³, 6477 w,
capacitor 60 uf, 1.8 ton, 2.8
hp, 220 v, 1ph, r22**

written by Lilianne | 19 November 2024

 **GREE**

QXSH-F375E090

1PH 50Hz

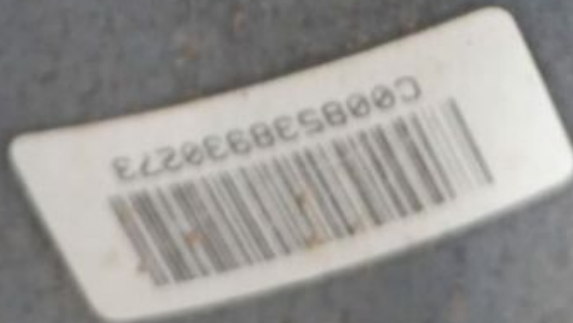
220-240V~

R22



LD887BZ31100094

ZHUHAI LANDA COMPRESSOR CO., LTD.



Private Picture Copyright : WWW.MBSM.PRO

Mbsm.pro, compressor, Gree, Air conditioner, OXSH-F375E090, OXSH-F375, 22100 btu, 37.50 cm³, 6477 w, capasitor 60 uf, 1.8 ton, 2.8 hp, 220 v, 1ph

**Mbsm.pro, AC Compressor, 2
Ton, 208-230v, Bristol,
H21J20BABC, H22B203ABC,
H21J193ABC, r22, Capacitor 30
uf**

written by Lilianne | 19 November 2024



Mbsm.pro, AC Compressor, 2 Ton, 208-230v, Bristol, H21J20BABC,
H22B203ABC, H21J193ABC, r22, Capacitor 30 uf

**Mbsm.pro, Compressor, 55R613G
T-9ASM, 12000 btu, r22, 1
Ton, 1.5 hp, Air conditioner,
220 v 1ph**

written by Lilianne | 19 November 2024



Mbsm.pro, Compressor, 55R613G T-9ASM, 12000 btu, r22, 1 Ton,
1.5 hp, Air conditioner, 220 v 1ph