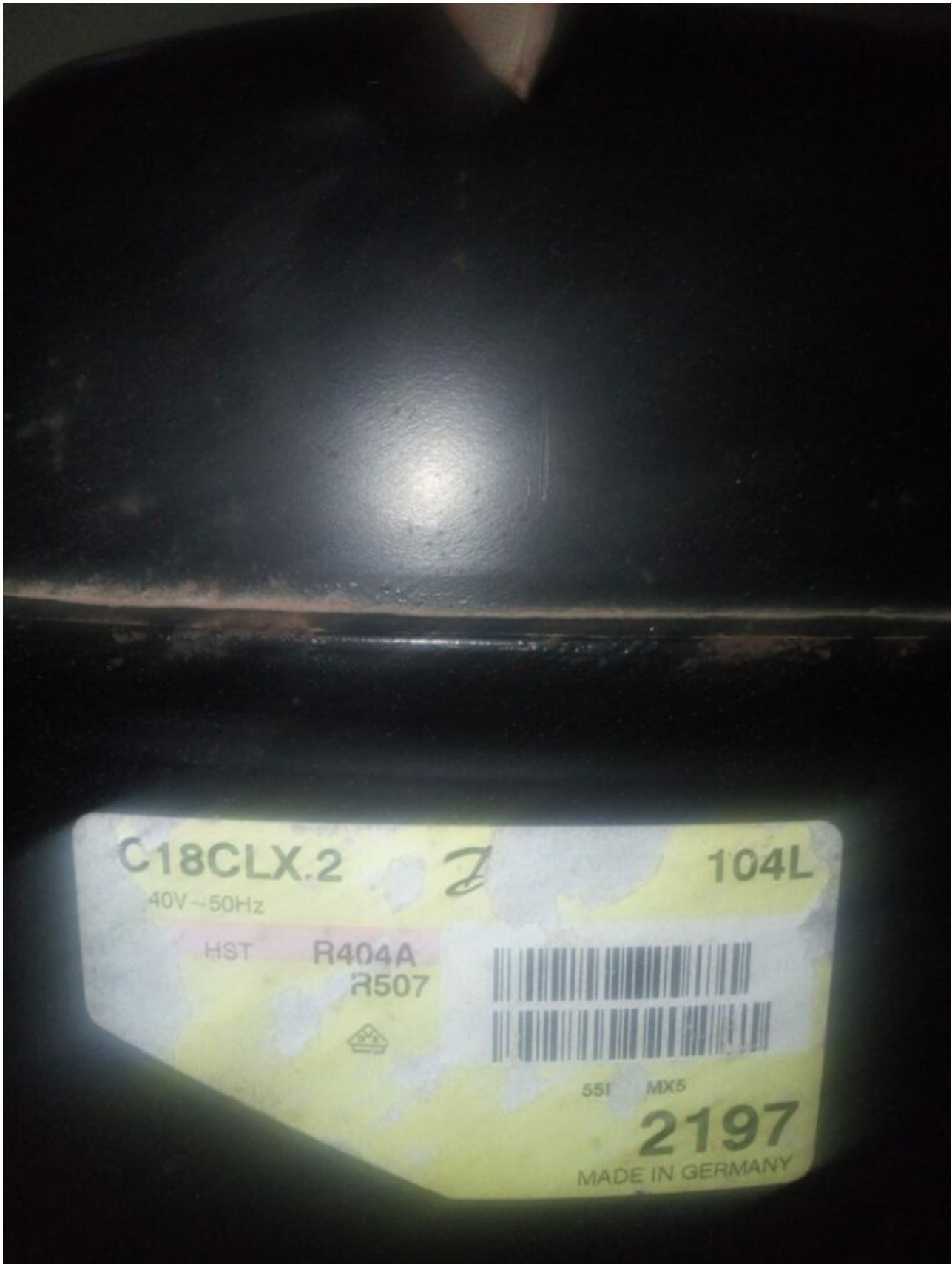


**Mbsm.pro, compressor, Secop,
SC18CLX.2, 104L2197, Danfoss
R404A, R507, 3/4 hp, 1bp**

written by Lilianne | 20 January 2024



Private Picture Copyright : WWW.MBSM.PRO

Mbsm.pro, compressor, Secop, SC18CLX.2, 104L2197, Danfoss R404A, R507, 3/4 hp, lbp

Hermetic, compressor, Embraco, Aspera, NEK2134GK-A, CSIR, R404A, R507, 1/2 Hp, 8.7 cm³, NEK2134GK, 1bp, NEK 2134 U

written by Amina | 20 January 2024



Private Picture Copyright : WWW.MBSM.PRO

Hermetic, compressor, Embraco, Aspera, NEK2134GK-A, CSIR, R404A, R507, 1/2 Hp, 8.7 cm³, NEK2134GK, 1bp, NEK 2134 U

**Mbsm.pro, Compressor,
Embraco, Aspera, NJ9226GK,
MBP, R404A, R507,
230V/1/50Hz, 1 HP++, 1.5
hp++, 1.75 hp**

written by mahdi miled | 20 January 2024



Mbsm.pro, Compressor, Embraco, Aspera, NJ9226GK, MBP, R404A,
R507, 230V/1/50Hz, 1 HP++,

**Mbsm.pro, Compressor,
DLLP-40X, DLLP-40X-EWL, DWM,
Copeland, Semi-Hermetic
Compressor, 4 Hp, R507, 400V
/3PH/ 50hz**

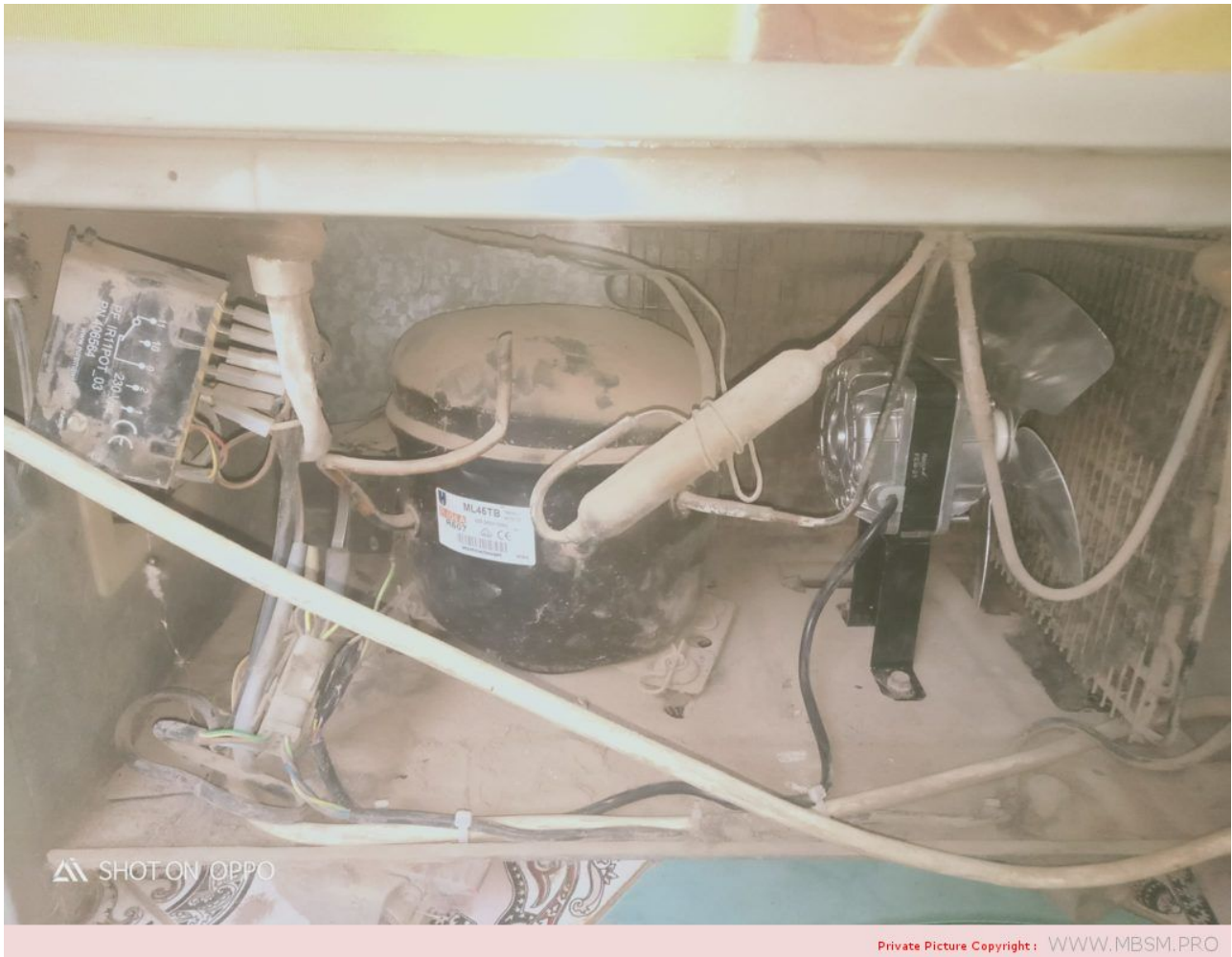
written by Lilianne | 20 January 2024



Mbsm.pro, Compressor, DLLP-40X, DLLP-40X-EWL, DWM, Copeland,
Semi-Hermetic Compressor, 4 Hp, R507, 400V /3PH/ 50hz

**Mbsm.pro, Compressor,
Cubigel, Huayi, Electrolux,
ZEM, Freezer, ML45TB, HMBP,
R404A, R507, 220 –
240V/1/50Hz, 1/5 HP, ++ Big,
1/4 Hp –, CSIR**

written by Lilianne | 20 January 2024



Compressor ACC Cubigel Huayi Electrolux ZEM ML45TB, HMBP – R404A, R507, 220 – 240V/1/50Hz, 1/5 HP, discharge 4.5 cm³, motor type CSIR, oil type ISO VG46 ester, oil charge 300 cm³, 528 W at +5 / +55 °, input power, current 352 W, 2.04A, expansion device: capillar or valve, cooling: fan, weight 10.1 kg

Mbsm.pro, Compressor, ACC, Cubigel, Huayi, Electrolux,

ZEM, MPT14LA , MPT14RA, LBP , R404A, R507, 1/2HP, 220-240V

written by Lilianne | 20 January 2024

Compressor Tecumseh L` Unite CAJ2432Z, LBP – R404A, 220 – 240V, 50 Hz, 1 phase, discharge: 18.3 cm³, oil type: POE, oil charge: 887 cm³, electrical equipment: CSR, cooling power 381 W at -35 / +40 °C, connection: suction: 1/2 inch, discharge: 5/16 inch, sound level: 56 dBA, start capacitor: 8 8 uF/250V, run capacitor: 15 uF/400V, expansion device: capillary or expansion valve, height: 271 mm, weight: 21.5kg

Type: Low back pressure (LBP)

Refrigerant: R404a/507

Displacement: 14.32cm³

Power: 1/2CV

Voltage: 230V – 50Hz

Single-phase

Motor type: CSR

Weight: 13.4 kg

Evaporation temperature

-40°C: 243W

-30°C: 420W

-25°C: 535W

-10°C: 988W



Private Picture Copyright : WWW.MBSM.PRO



Mbsm_dot_pro_private_PDF_MPT14LATélécharger

**Compressor Embraco Aspera
NEK6210GK, MBP – R404A, R507,
220 – 240V/1/50Hz, 1/2 HP,**

discharge 8.77 cm³, motor type CSIR, lubricant type POE 22, lubricant charge 350 ml.1318 W at +7.2 / +54.4 °, expansion device: capillary or valve, cooling: fan cooling, weight 11 kg

written by Lilianne | 20 January 2024
Compressor ASPERA NEK6210GK | NEK 6210 GK

Compressor Embraco Aspera NEK6210GK, MBP – R404A, R507, 220 – 240V/1/50Hz, 1/2 HP, discharge 8.77 cm³, motor type CSIR, lubricant type POE 22, lubricant charge 350 ml.1318 W at +7.2 / +54.4 °, expansion device: capillary or valve, cooling: fan cooling, weight 11 kg

Refrigerant	R404A/R507
Working range[stC] MBP	-20 do +10
Nominal capacity [W] (evaporating temperature +7,2C, Condensing temperatur +54,4C)	1303
Power supply	220-240V 50Hz
Engine type	CSIR
Displacement [cm ³]	8,77
Weight [kg]	11

Evaporating temperature +55 C

Evaporating Temperature	Cooling Capacity +/-5%	Power Consumption +/-5%	Current Consumption +/-5%	Gas Flow Rate +/-5%	Efficiency +/-7%

°C	(kcal/h)	(W)	(Btu/h)	(W)	(A)	(kg/h)	(kcal/Wh)	(W/W)
-20	384	447	1.525	365	2,36	11,99	1,05	1,22
-15	467	544	1.855	419	2,58	14,69	1,12	1,30
-10	574	668	2.278	470	2,79	18,18	1,22	1,42
-5	704	819	2.795	519	3,00	22,51	1,36	1,58
0	858	998	3.405	565	3,20	27,73	1,52	1,77
5	1.036	1.204	4.109	609	3,40	33,90	1,70	1,98
10	1.237	1.438	4.907	650	3,59	41,06	1,90	2,21

Substitutes for this compressor are: Electrolux ML90TB ,
L'Unite Hermetique/Tecumseh AE4450Z

Refrigerant:	R404A, R507
--------------	-------------

Embraco aspera

NEK6210GK



THERMALLY PROTECTED

220 - 240V - 50Hz

R 404A

POE: OIL 350°C

1 PH

SUCTION

MADE IN SLOVAKIA NO START WITHOUT STARTING DEVICE



958CA51

LX

N10ZGP43

**Compressor ,Embraco Aspera
,NJ2212GK, LBP – R404A, R507,
220-240V/1/50Hz, 1.5 HP,
34.38 cm³, LRA 36.0 A, CSR,
lubricant charge 750ml POE
22, 1547 W ,at -23.3 / +54.4
°**

written by Lilianne | 20 January 2024



Compressor ,Embraco Aspera ,NJ2212GK, LBP – R404A, R507,
220-240V/1/50Hz, 1.5 HP, 34.38 cm³, LRA 36.0 A, CSR, lubricant
charge 750ml POE 22, 1547 W ,at -23.3 / +54.4 °