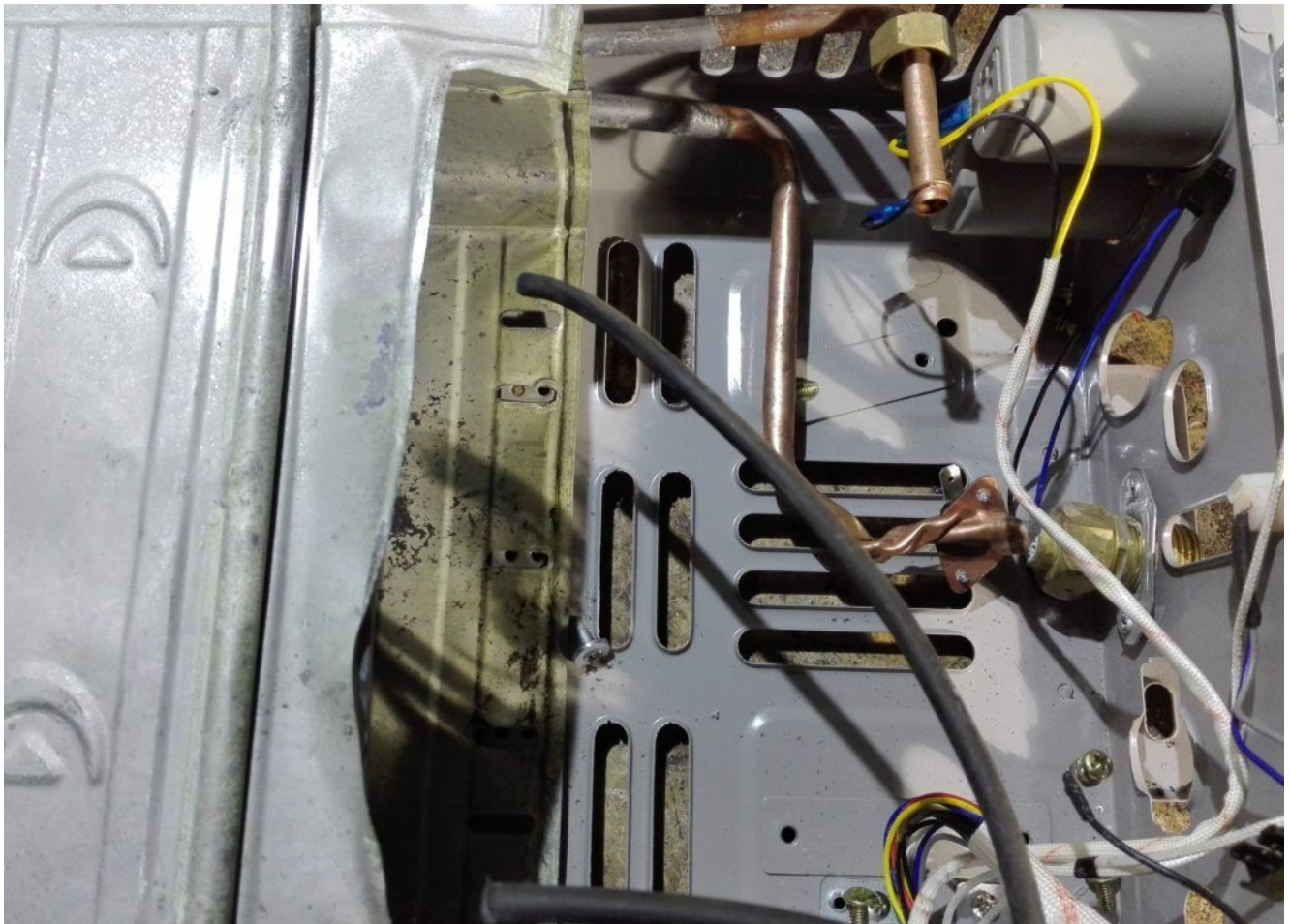


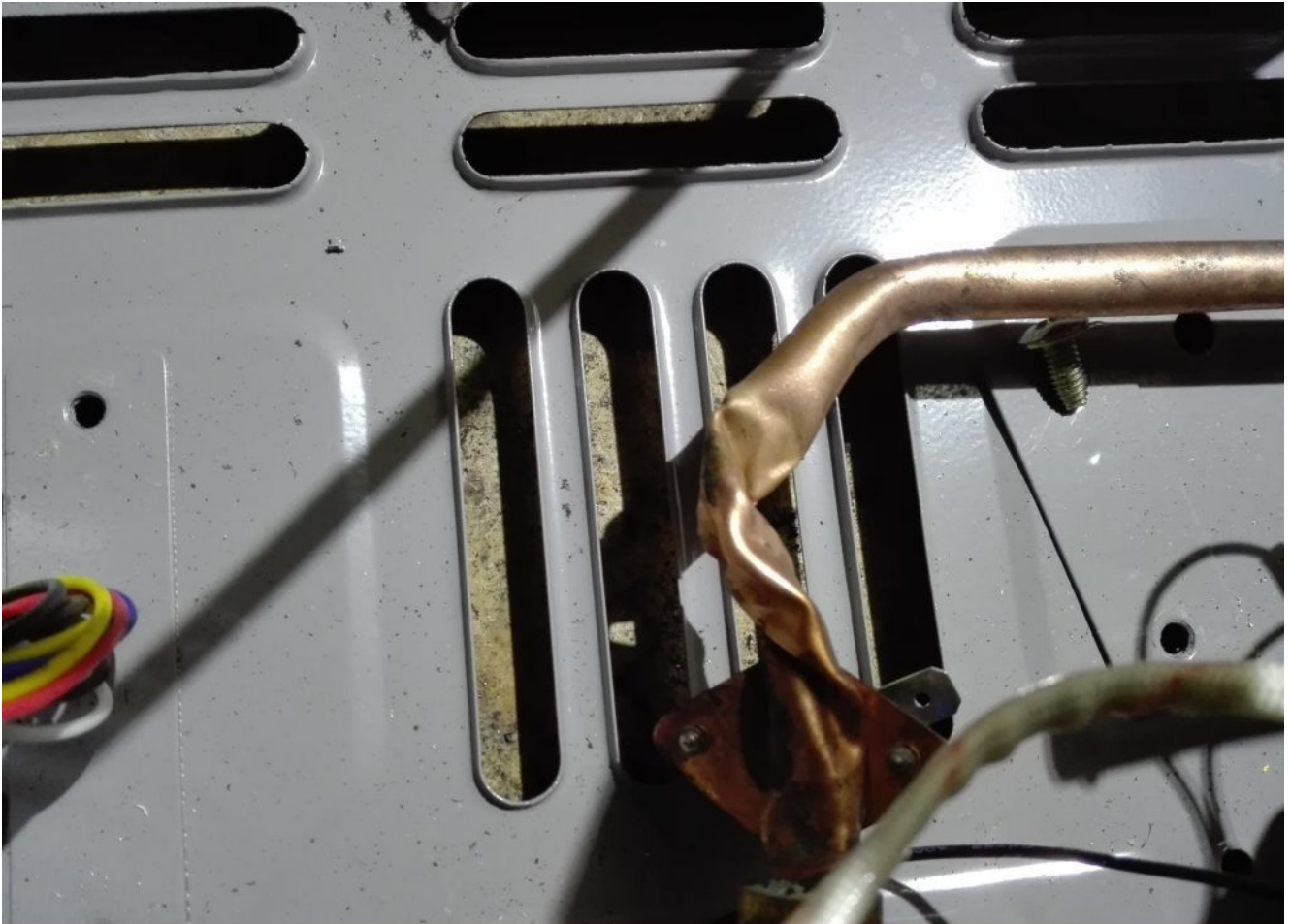
Erreur Grave montage chauffe bain Électronique

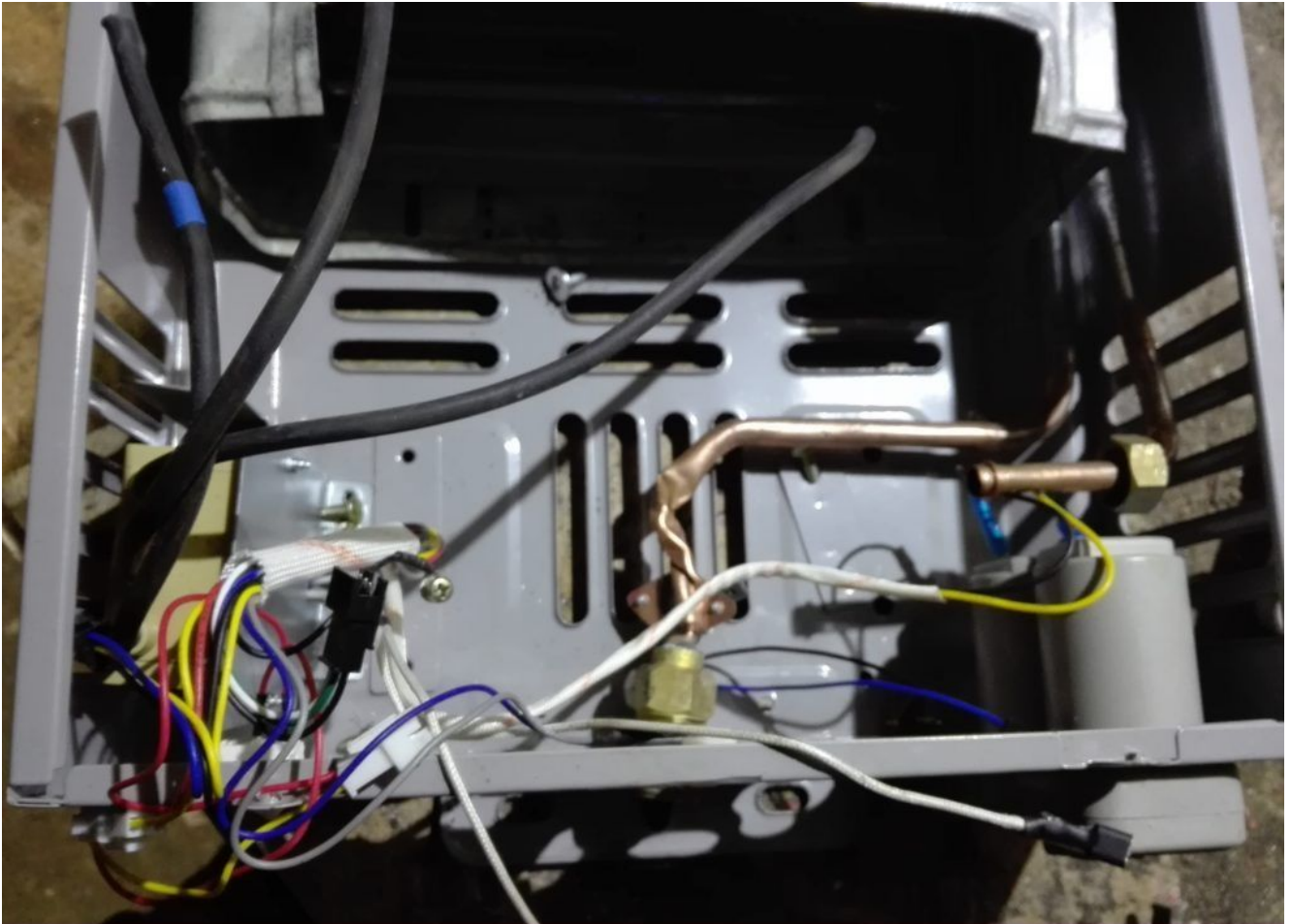
written by Lilianne | 8 April 2020

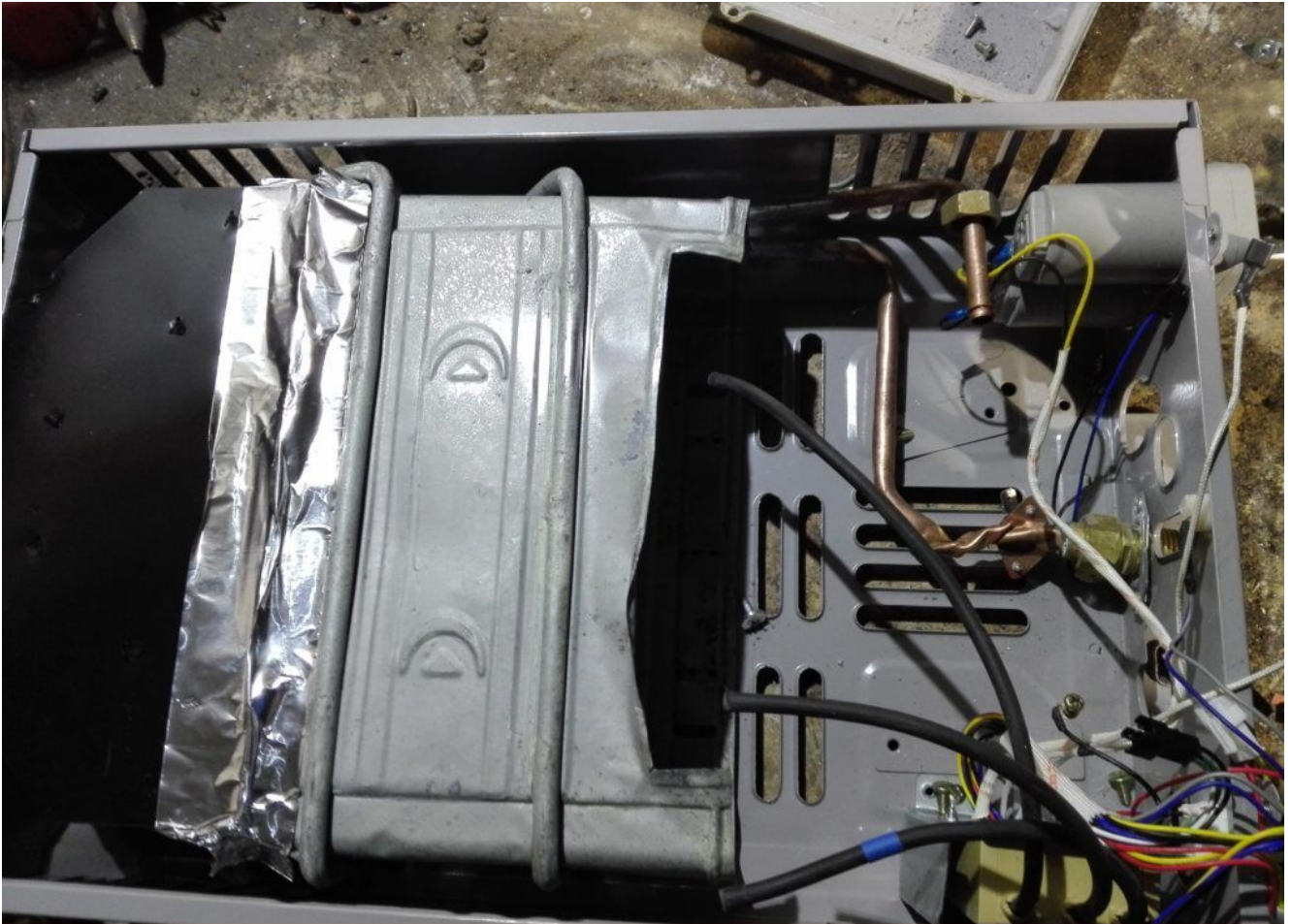
خطأ كبير في تركيب سخان الحمام

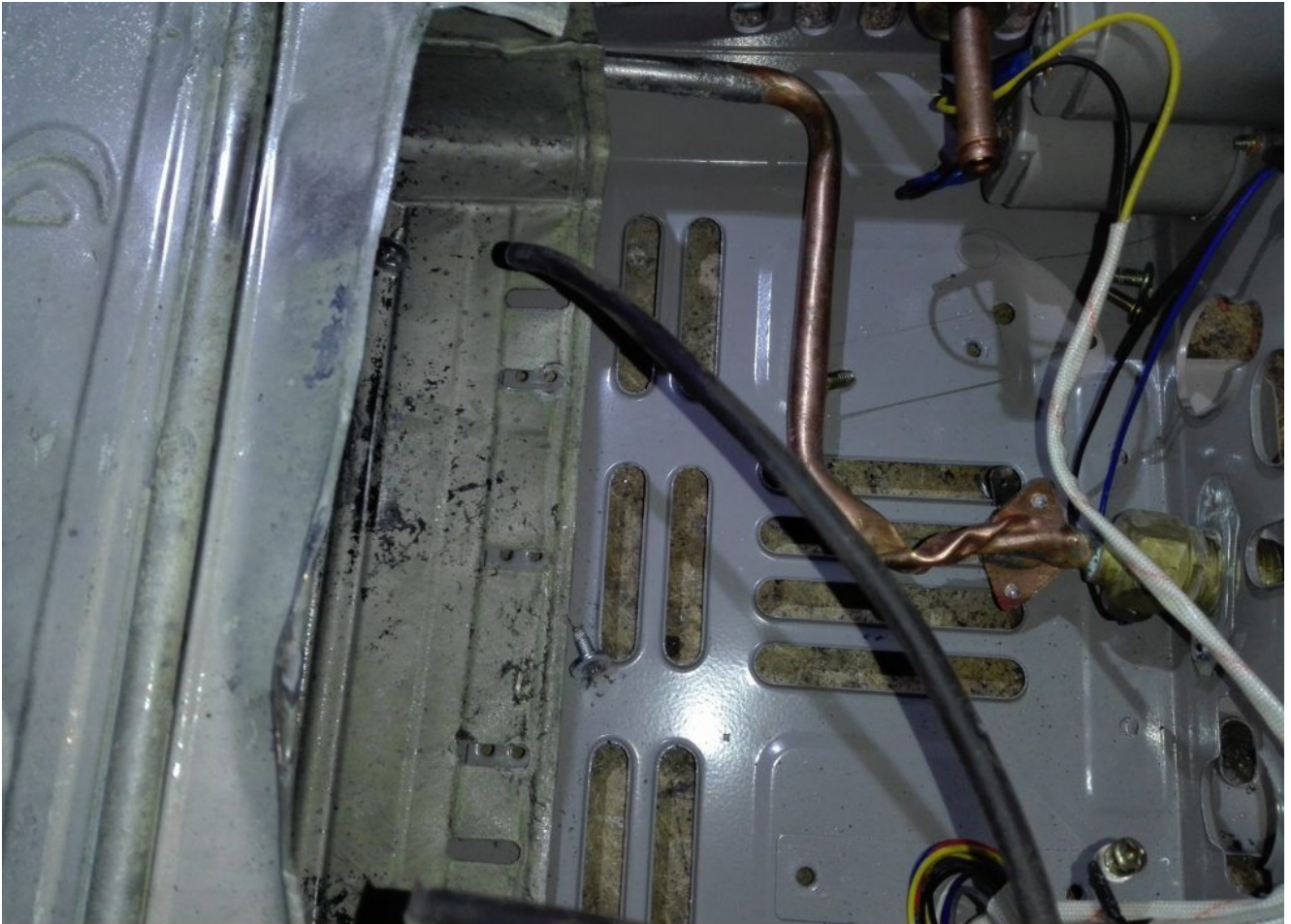
Serious bath heater mounting error

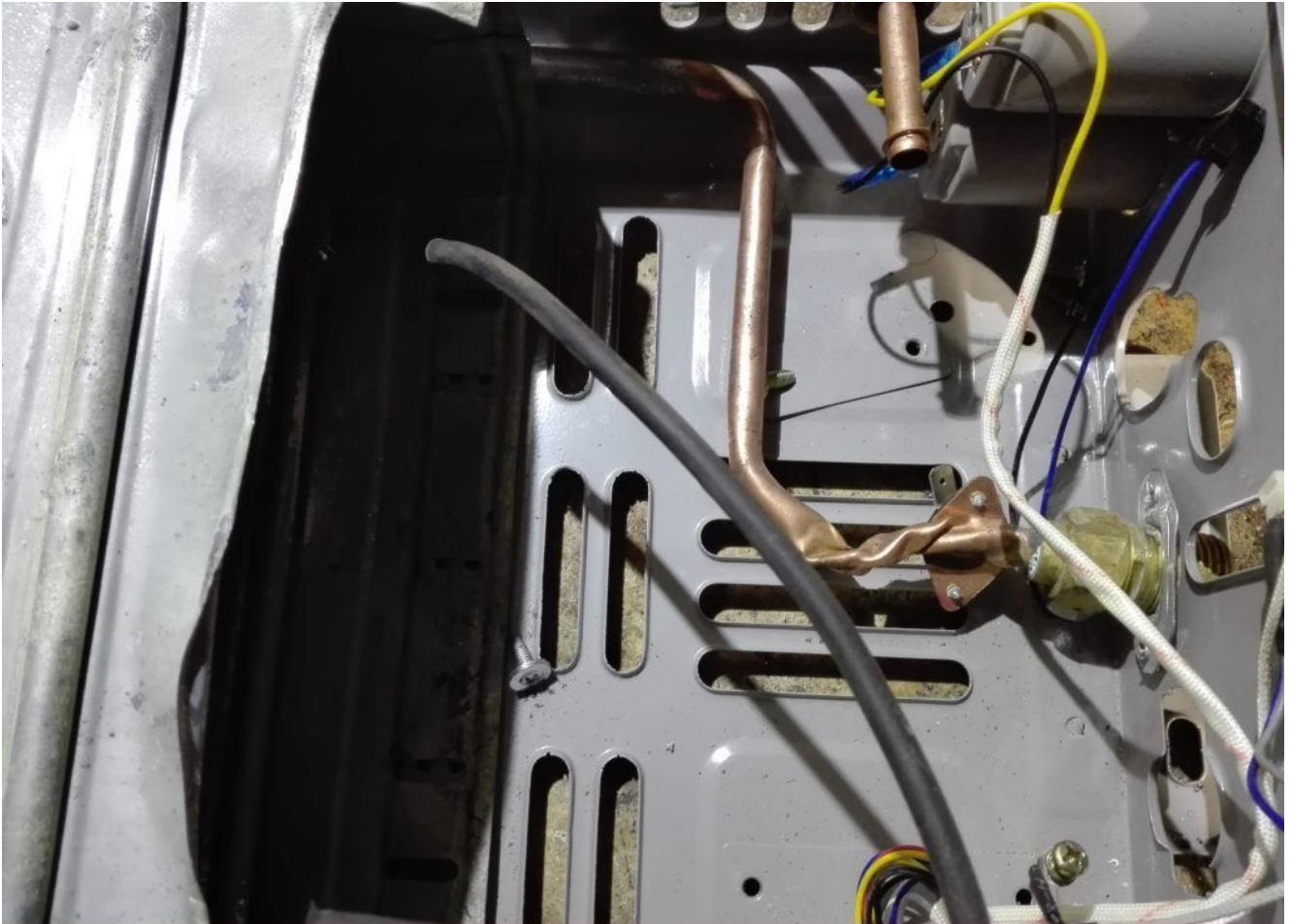


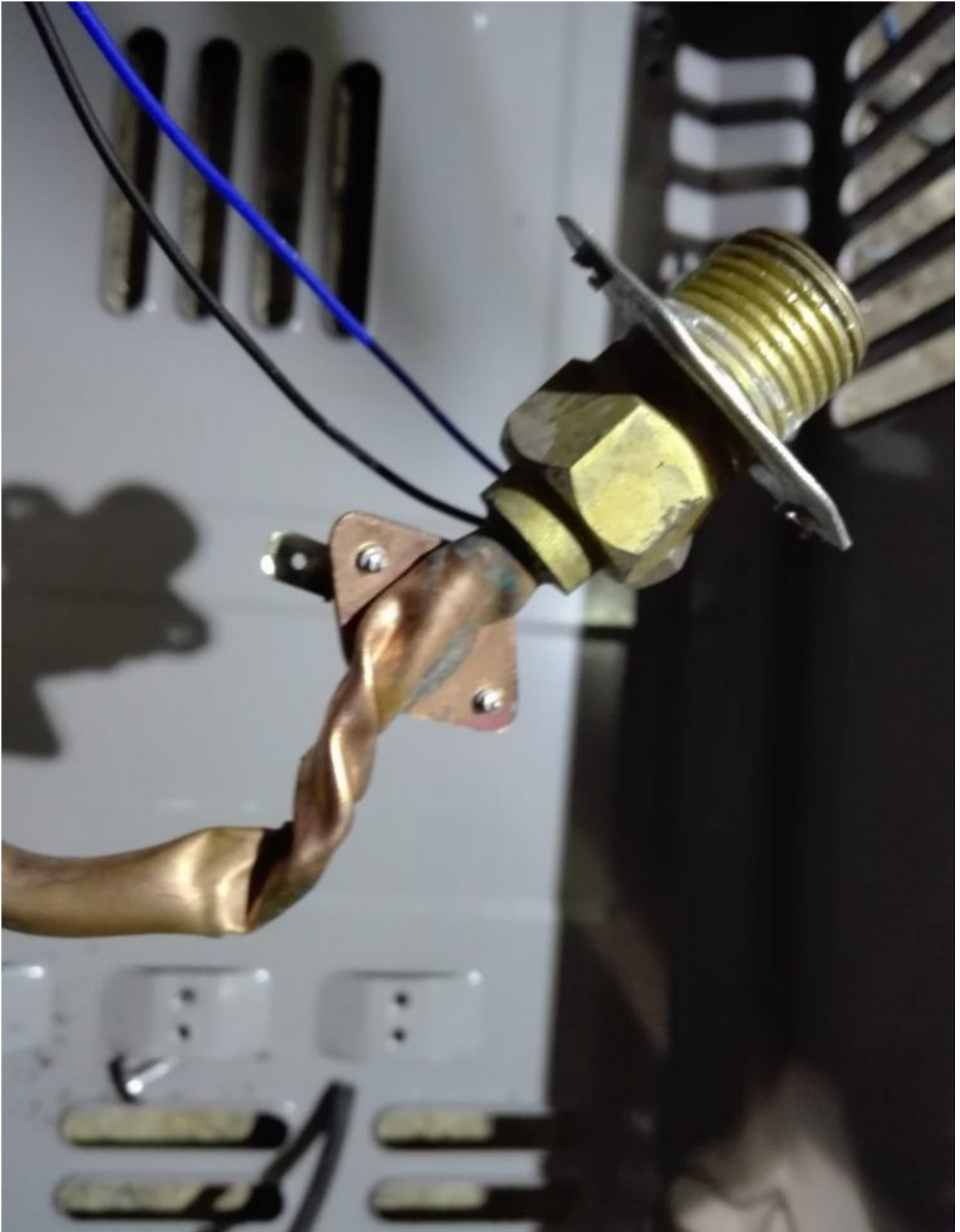


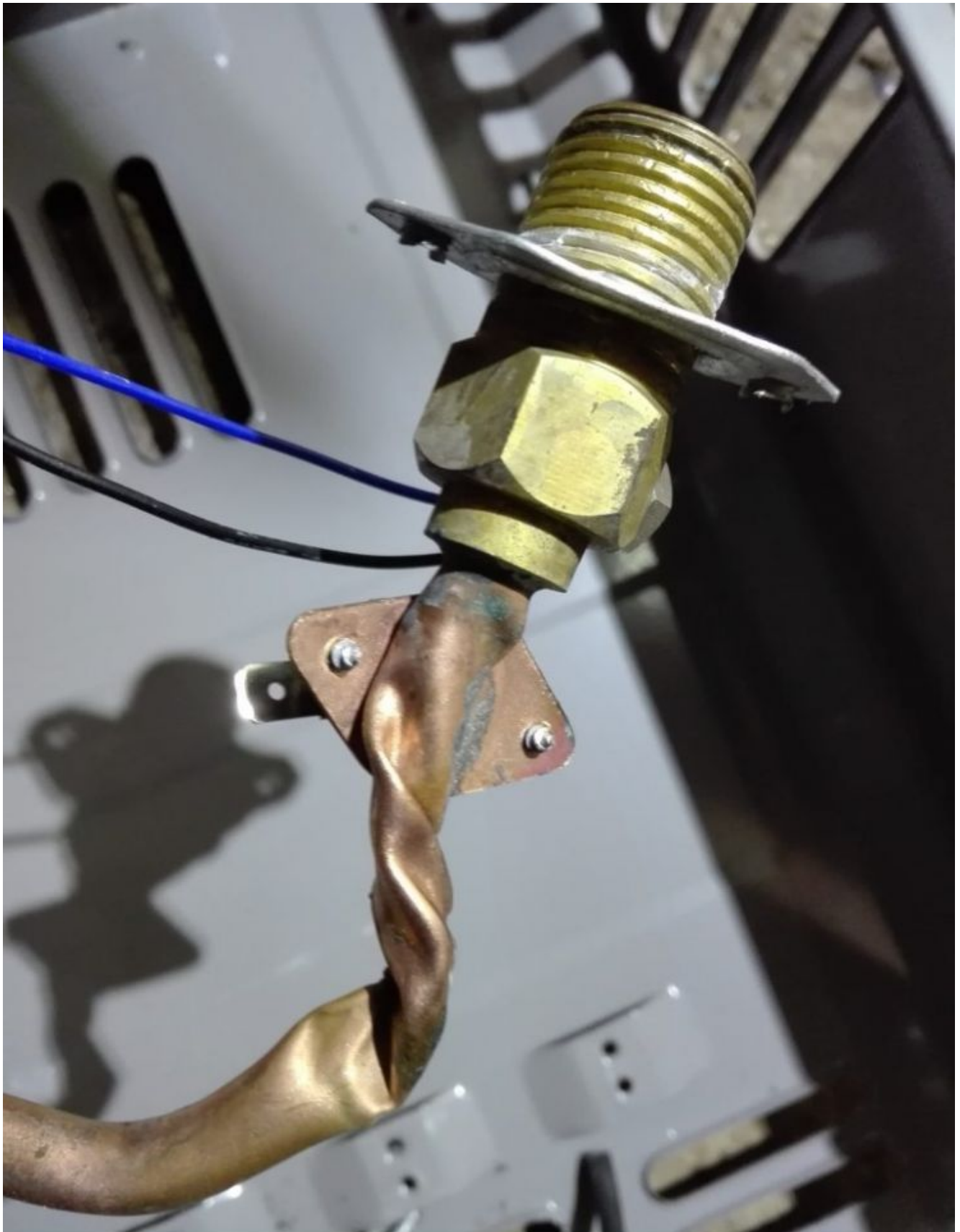


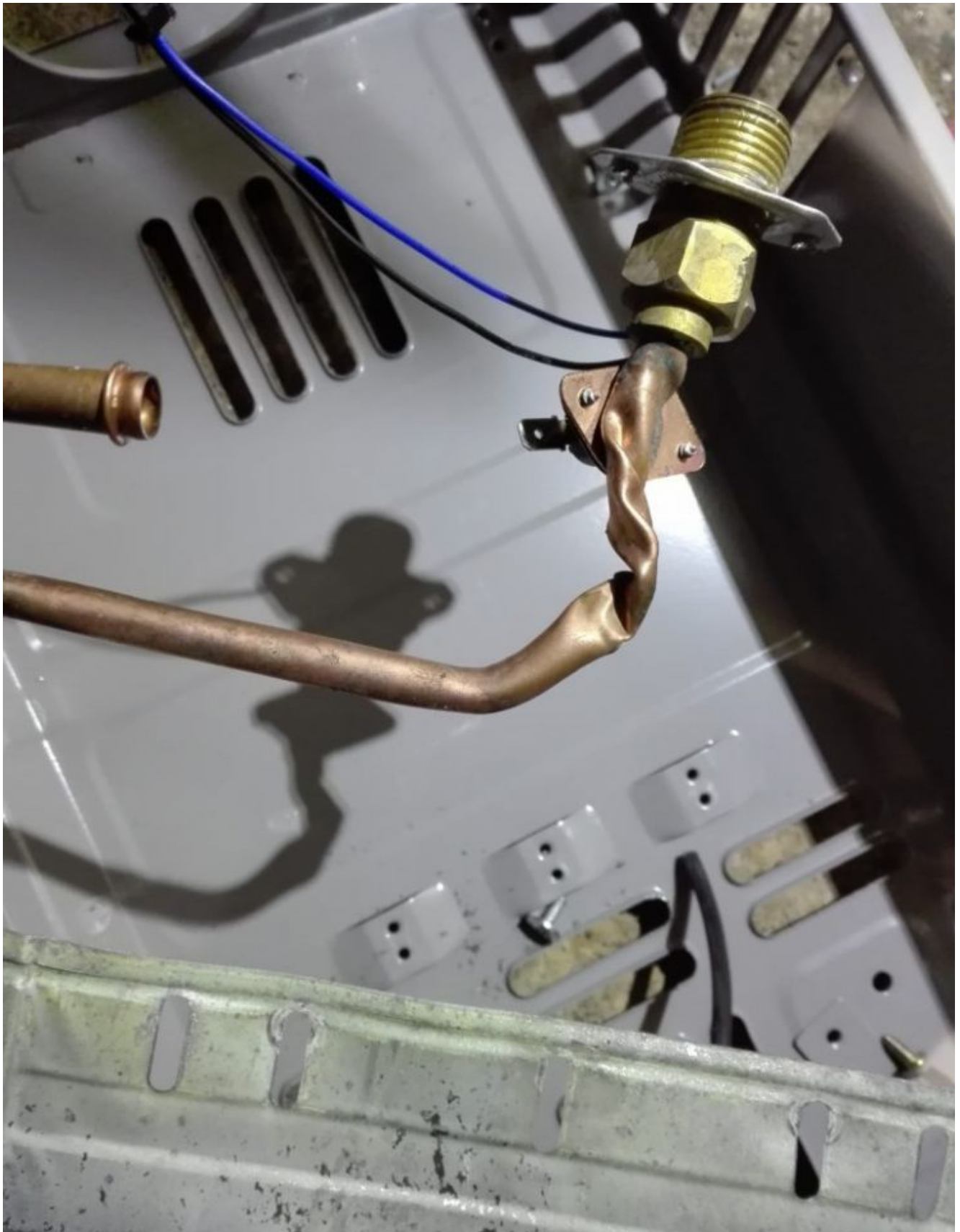












Un petit projet à réaliser .. Une balançoire haute sécurité pour les enfants

written by Lilianne | 8 April 2020

مشروع صغير للتنفيذ .. أرجوحة أطفال عالية السلامة

A small project for implementation .. A high-safety swing for children



























Erreur de maintenance chauffe eau solaire

written by Lilianne | 8 April 2020

خطأ صيانة سخان المياه بالطاقة الشمسية

Solar water heater maintenance error











Picture5 Mbsm Dot Pro : www.mbsm.pro

Cosse et Fiche plat

written by Lilianne | 8 April 2020

On trouve également sur le marché des **cosses** pour batterie qui diffèrent selon leur surface de contact avec la batterie. Dans cette catégorie d'accessoires de connexion, on peut trouver des boîtes de dérivation, du ruban adhésif ou des bornes et des dominos.





Core Mécanique du chauffe-eau Électronique 10 litre

written by Lilianne | 8 April 2020



Core Mécanique du chauffe-eau Électronique 10 litre

COMPRESSEUR ZEL , 200w , HDL200A, R600a, LBP , 1/4 hp

written by Lilianne | 8 April 2020



GML70G,

**GML90G,
GML125G,
HMM70A,
HMM90A,
HML125AT,
GML140AT
GML200AT,
GTH88AA,
HML140AT,
HML200A,
HKD14AA,
GML125G,
GTH88AA,**

**GDL145D,
GDL175D,
GML140A,
GML160A,
GML180A,
GML200A,
GML145D,
GML175D,
GPL175D*,
GXL175D,
GXL200D,**



Mbsm_dot_pro_private_PDF_catalog_zelTélécharger
COMPRESSEUR ZEL HML170A AU R600A LBP 1/6HP 9.5CM3



**COMPRESOR ACC GL80AN R134
1/5, Cubigel Compressors LBP
, Hermetic, Freezing,
Tb/Cooling/hmbp**

written by Lilianne | 8 April 2020





Type: Hermetic piston compressors

Producer: ACC
Series: HMBP/tb

Model: GL80AN

General data

Refrigerant:	R134a	
Discharge element:	C	
Cooling:	S	
Maximum ambient temperature [°C]:	43	

Compressor's data

Cylinder capacity [cm ³]:	8,1	
Displacement [m ³ /h]:	1,4	
Weight [kg]:	10,6	
Oil charge [cm ³]:	445	
Oil type:	ISO VG 19 ESTER	

Engine's data

Engine type:	RSIR	
Power [KM]:	1/5	
Starting element:	LST	
Power supply:	220V 50Hz	
Voltage range:	170-242	
Locked rotor current [A]:	18	
Running winding resistance (25°C) [Ω]:	5,81	
Starting winding resistance (25°C) [Ω]:	11,01	

Electrical data

Relays:	3003	
Shielding element:	MRP321LZ, T0683, AF11FI	
Starting capacitor volume [μ F]:		

Connections

	millimeters	inches	
Suction tube:	6,5		
Service tube:	6,5		
Discharge tube:	4,9		

GL80AN (1)Download

**mbsm.pro , Compresseur Aspera
, Embraco , NEK2168GK ,
R404a/R507 , LBP , 3/4
HP, nominal output: 707 W**

written by Lilianne | 8 April 2020

EMBRACO is a company specialized in cooling solutions and world leader in the hermetic compressor market. Our mission: provide innovative solutions for a better quality of life, always

attentive to technological excellence and sustainability.

Technological leadership, operational excellence and sustainability are some of the pillars

which ensure the EMBRACO differential over other companies in the world market. Its

products are now considered the favorite leading home appliance manufacturers by major

automakers and are spotlighted by manufacturers of commercial refrigeration equipment.

With global operations and production capacity exceeding 34 million units a year, the company offers solutions that are differentiated for their innovation and low energy consumption. Its 11.500 employees work in factories and offices located in Brazil (headquarters), China, Italy, Slovakia, Mexico, the United States and Russia.

Energy efficiency is constantly sought in the processes, products and relationships with the communities where it operates. Our company is the absolute leader in this segment, being able to offer products that meet the most restrictive international standards regarding energy consumption.

As a worldwide leader, EMBRACO tries to anticipate market changes, and in doing so, our company is in a state of permanent transformation. We continuously assess our processes in order to maintain our leadership within the industry and promote growth, without forgetting the pillars of our organization.

Compressor ASPERA NEK2168GK | NEK 2168 GK

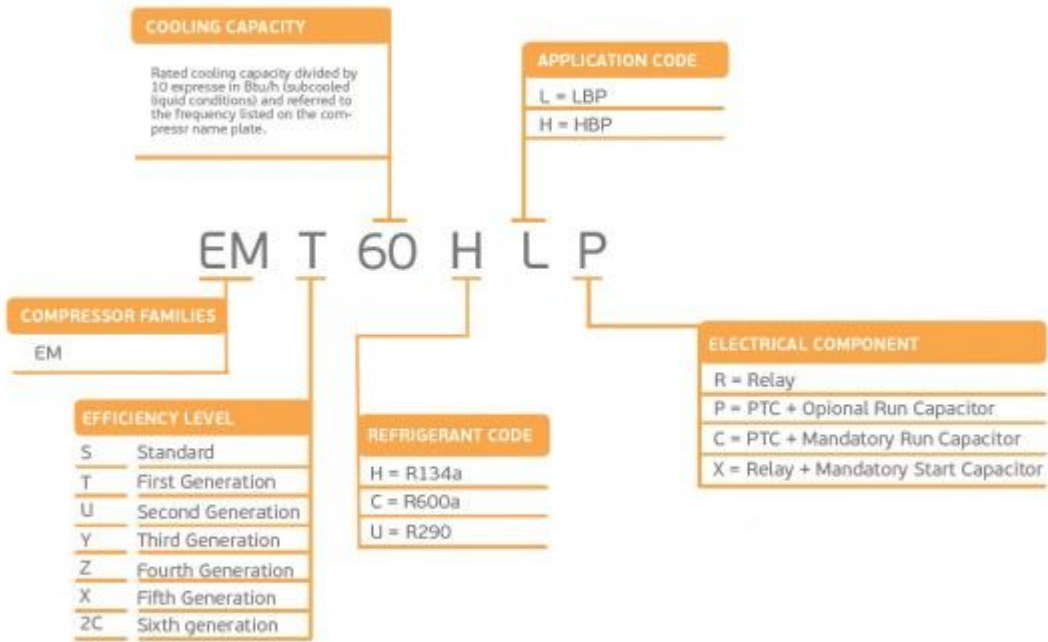
Refrigerant	R404/R507
Working range[stC] LBP	-40 to -10
Nominal capacity [W] (evaporating temperature -23,3C, Condensing temperatur +54,4C)	688
Power supply	220-240V 50Hz
Engine type	CSIR
Displacement [cm ³]	14,28
Weight [kg]	11,6

Evaporating temperature +55 C

Evaporating Temperature	Cooling Capacity +/-5%	Power Consumption +/-5%	Current Consumption +/-5%	Gas Flow Rate +/-5%	Efficiency +/-7%			
						(kg/h)	(kcal/Wh)	(W/W)
°C	(kcal/h)	(W)	(Btu/h)	(W)	(A)	(kg/h)	(kcal/Wh)	(W/W)
-40	226	263	897	370	3,46	6,01	0,61	0,71
-35	309	359	1.224	435	3,57	8,22	0,71	0,82
-30	413	481	1.640	506	3,73	11,06	0,82	0,95
-25	541	629	2.146	584	3,95	14,52	0,93	1,08
-20	691	803	2.740	668	4,21	18,64	1,03	1,20
-15	863	1.004	3.424	759	4,53	23,43	1,14	1,32
-10	1.058	1.230	4.197	856	4,90	28,92	1,24	1,44

Refrigerant: R404A, R507

R404A / R507								
	LBP	VOLT. FREQ.	COOL. CAP. [W]	DISPL. [cc]	MBP	VOLT. FREQ.	COOL. CAP. [W]	DISPL. [cc]
	NE NEK	NEK2117GK	A	125	4,51	NEK6144GK	A	550
NEK2121GK		A	151	5,44	NEK6165GK	A	743	6,20
NEK2125GK		A	182	6,20	NEK6181GK	A	841	7,28
NEK2130GK		A	213	7,37	NEK6210GK	A / N	1.005	8,77
NEK2134GK		A / N	248	8,77	NEK6213GK	A	1.337	12,11
NEK2150GK		A	329	12,11	NEK6217GK	A / N	1.164	14,28
NEK2168GK		A	378	14,28				
NEK2172GK		C	819	16,80				



embraco NEK



R404A LBP

Picture5 Mbsm Dot Pro : www.mbsm.pro

■ 

mbsm.pro , Compresseur Aspera , Embraco NEK2168GK , R404A , LBP , 3/4 HP

Compresseur hermetique de Aspera – Embraco NEK2168GK – R404A
3/4 HP

220-240V 50 Hz

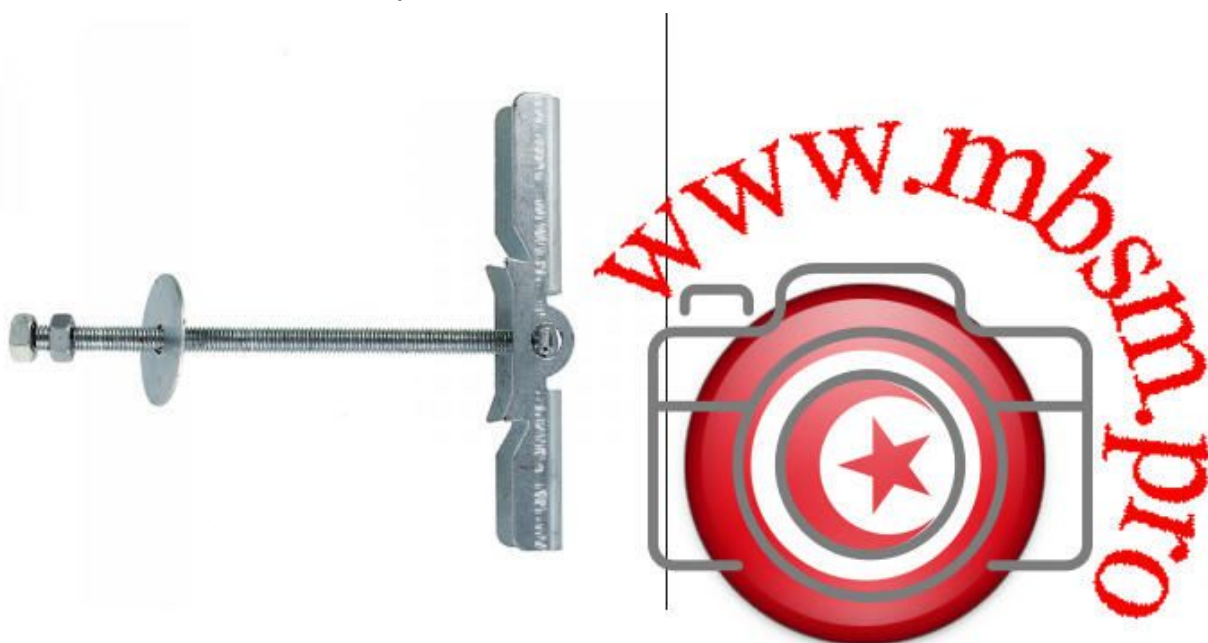
Cylindrée = 14.3 CM3

APPLICATIONS = LBP

Moteur type: CSR

Mbsm.pro, cheville papillon pour plafond , ou La cheville ou l'ancrage sert à fixer un objet sur une surface

written by Lilianne | 8 April 2020



Picture5 Mbsm Dot Pro : www.mbsm.pro

Les ancrages sont beaucoup utilisés en construction, mais on en utilise aussi régulièrement pour des choses simples comme faire la pose d'un portrait sur un mur.

L'ancrage est beaucoup utilisé pour visser dans un mur de gypse, car celui-ci n'est pas assez rigide pour maintenir un clou ou une vis fermement. Il faut donc utiliser un moyen afin pouvoir visser quelque chose solidement, malgré la fragilité du revêtement de mur.

Mbsm.pro , Compressor ESC 8.5, R134a, Necchi (530591) , 1/5 Hp ,159 w

written by Jamila | 8 April 2020

Mbsm.pro , Compressor ESC 8.5, R134a, Necchi (530591) , 1/5 Hp
,159 w

	Motore	cm³	Volt	Watt -10°C	Watt -30°C	
RIB5150	A9EV – R22 – 3/8 – LBP	CSR	9,29	220	642	
RIB5160	A11EV – R22 – 1/2 Hp – LBP	CSR	11,11	220	781	
RIB5350	A13EV – R22 – 5/8 Hp – LBP	CSR	13,35	220	967	
RIB5450	N17EV – R22 – 3/4 Hp – LBP	CSR	17,52	220	1221	
RIB5550	N21EV – R22 -1- Hp LBP	CSR	20,68	220	1464	
RIB5650	N23EV – R22 – 1,2 Hp – LBP	CSR	23,18	230	1616	
RIB7104	NB4 COMPRESS. R12 24V. FRAMEC 1/8 =					
RIB7108	NB8 COMPRESS. R12 24V.FRAMEC 175W.=					
RIB7113	NB13HP COMPRESS.R12 24V.FRAMEC 1/3=					

RIBB010	ETR 3 – R134A – 1/12 Hp – LBP	RSIR	3,00	220	127	
RIBB020	ETR 3,5 HP 1/10 R134A – LBP	RSIR	3,50	220	156	
RIBB030	ETR 4 HP 1/8 R134A – LBP	RSIR	4,10	220	179	
RIBB040	ETR 5 – R134a – HP 1/6 – LBP	RSIR	5,12	220	231	
RIBB050	ETR5,5 – R134a – 1/6 Hp – LBP	RSIR	5,55	220	257	
RIBB080	ESC5 – R134a – 1/6 Hp – LBP	RSIR	5,12	220	222	
RIBB100	ESC7 – R134a – 1/5 Hp – LBP	RSIR	7,00	220	307	
RIBB110	ESC8 – R134a – 1/5 Hp – LBP	RSIR	7,75	220	358	
RIBB130	ESC9 – R134a – 1/4 Hp – LBP	RSIR	9,07	220	424	
RIBB140	ESC11 – R134a – 1/3 Hp – LBP	RSIR	10,63	220	501	
RIBB200	ESC4H – R134a – 1/8 Hp – LBP	RSIR	4,10	220	177	
RIBB400	ESR 7 – R134a – 1/5 Hp – LBP	RSIR	7,00	220	307	
RIBB410	ESR 8 – R134a – 1/5 Hp – LBP	RSIR	7,75	220	358	
RIBB430	ESR 9 – R134a – 1/4 Hp – LBP	RSIR	9,07	220	424	
RIBB440	ESR11 – R134a – 1/3 Hp – LBP	RSIR	10,63	220	501	
RIBE040	TN17EV – R404 – 3/4 Hp – LBP	CSR	17,52	220		565

RIBE050	TN21EV – R404 – 1 Hp – LBP	CSR	20,68	220		644
RIBE060	TN23EV – R404 – 1,2 Hp – LBP	CSR	23,18	220		726
RIBT999	COMPRESSORE ELECTROLUX DESCR.BOLLA					



neue Type	Verdichter Type		Kälte- mittel	Bereich	1)Betrieb	2)Leistungs- aufnahme Watt	3)Strom- aufnahme A	Öl- füllung cm ³	Bestell-Nr.
		Vorläufer Type							
mit Esterölfüllung									
*ETR 3	-	-	R 134 a	LBP	K	68	0,55	185	*230.051
*ETR 3,5	-	-	R 134 a	LBP	K	81	0,58	185	*230.053
*ETR 4	-	-	R 134 a	LBP	K	89	0,64	185	*230.055
*ETR 5	-	-	R 134 a	LBP	K	109	0,76	185	*230.057
*ETR 5,5	-	-	R 134 a	LBP	K	118	0,80	185	*230.059
*ESR 7	ESC 7	-	R 134 a	LBP	K	127	0,83	220	*230.073
*ESR 8	ESC 8	-	R 134 a	LBP	K	149	1,00	220	*230.075
*ESR 8,5	ESC 8,5	-	R 134 a	LBP	K	159	1,07	220	*230.077
*ESR 9	ESC 9	-	R 134 a	LBP	K	177	1,20	220	*230.079
*ESR 11	ESC 11	-	R 134 a	LBP	K	215	1,42	220	*230.081
ETR 4H	ES(C)R4H	-	R 134 a	HBP	K	187	1,13	185	-
ETR 5H	ES(C)R5H	-	R 134 a	HBP	K	231	1,30	185	-
ESR 7H	ESC 7H	-	R 134 a	HBP	K	288	1,61	220	-
ESR 9H	ESC 9H	-	R 134 a	HBP	K	396	2,31	220	-
ESR 11H	ESC 11H	-	R 134 a	HBP	K	472	2,64	220	-
TA 13 EV	-	-	R 404 A	LBP	K/E	463	2,15	950	230.095
TN 17 EV	-	-	R 404 A	LBP	K/E	627	2,83	950	230.097
TN 21 EV	-	-	R 404 A	LBP	K/E	727	3,61	950	230.099

Picture5 Mbsm Dot Pro : www.mbsm.pro