

Compressor, LG, GK113P, R410A, 220-240V, 50Hz, 9600 Btu / h, capacitor 35 uF, 1Piston

written by Lilianne | 8 December 2021

Refrigerant	Type	Frequency	Voltage	Series	Model	Cooling	Capacity	Input	EER	COP	Test Condition
Btu/hr	Watts	Watts	Btu/W.hr	W/W							
R410A	1piston	50Hz	1 Φ , 220/240V	GA	GA066P	5,270	1,544	555	9.5	2.78	ASHRAE
GA080P	6,550	1,919	668	9.81	2.87	ASHRAE					
GA086P	7,050	2,066	735	9.59	2.81	ASHRAE					
GAB	GAB040P	3,130	917	340	9.2	2.7	ASHRAE				
GAB042P	3,410	999	355	9.6	2.81	ASHRAE					
GAB048P	3,985	1,168	403	9.9	2.9	ASHRAE					
GAB072P	5,950	1,744	590	10.08	2.95	ASHRAE					
GK	GK086P	6,900	2,022	726	9.5	2.79	ASHRAE				
GK094P	7,700	2,256	794	9.7	2.84	ASHRAE					
GK102P	8,250	2,418	841	9.81	2.87	ASHRAE					
GK113P	9,000	2,637	914	9.85	2.89	ASHRAE					
GK120P	9,700	2,842	1,010	9.6	2.81	ASHRAE					
GK141P	11,350	3,326	1,170	9.7	2.84	ASHRAE					
GK151P	12,200	3,575	1,245	9.8	2.87	ASHRAE					
GKS	GKS094P	7,700	2,256	755	10.2	2.99	ASHRAE				
GKS108P	8,700	2,549	838	10.38	3.04	ASHRAE					
GKS113P	8,750	2,564	920	9.51	2.79	ASHRAE					
GKS134P	10,900	3,194	1,100	9.91	2.9	ASHRAE					
GKS141P	11,500	3,370	1,116	10.3	3.02	ASHRAE					
GKS151P	12,230	3,584	1,245	9.82	2.88	ASHRAE					
GJ	GJ176P	14,400	4,220	1,485	9.7	2.84	ASHRAE				
GJ196P	16,500	4,835	1,705	9.68	2.84	ASHRAE					
GJ208P	17,500	5,128	1,750	10	2.93	ASHRAE					
GJ222P	18,500	5,421	1,867	9.91	2.9	ASHRAE					
GJ230P	19,100	5,597	1,949	9.8	2.87	ASHRAE					



Private Picture Copyright: WWW.MBSM.PRO

Mbsm_dot_pro_private_PDF_gk113pTélécharger

Compressor, LX110LQJG, Refrigeration freezer, KF- P8903HLP, 1/3HP, 260W, R134A, 180G, Refrigerator Amerercaïn

written by Lilianne | 8 December 2021

1 Reciprocating & Linear Compressor Compressor Technology for Refrigerator

2 01 LG Compressor Model Variety In order to offer you a various product portfolio of refrigerator compressor, our range covers constant and inverter of Reciprocating and Linear compressor with low pressure as well as high pressure. It enables to provide you with full support in all application of your needs. Customer Support LG compressors promise to deliver a satisfaction level for all your business stage from research, development to the spec-in that exceeds our customers expectations, and strives to provide the highest value to our customers through a fast, accurate and differentiated service & solution as your business partner. Technology LG compressors are continuously evolving group of high-precision machining and assembly technologies from accumulated techniques for generating sustainable world best compressor. Especially we are enabling to give our customers technical support in order to provide best performance compressor through design mechanism and produce key technology of compressor, inverter motor and drive that makes you to achieve optimized product. Quality With the product quality and safety evaluation system that performs basic quality and safety evaluation for products at every production stage. Under the quality gate system, all our products undergo a safety check at each quality gate based on a checklist, preventing shipments of products with quality or safety issues. We also have achieved recognition our quality and

sustainability from Europe, North America, China and Japan.
Why LG Compressor? LG Compressor 01

3 02 LG Compressor LG Compressor 03 Brief History & Factory
Milestones & Production Sites China Qinhuangdao (Casting)
Tianjin (Rotary, Scroll) Nanjing () Taizhou (Reciprocating) 13
Production Refrigerator Compressor Production Air-conditioner
Compressor Production Compressor Division Compressor Sales 100
Million Units Establishment of C&M Business Unit 2011 Korea
(HQ) Changwon (Reciprocating, Linear, Rotary, Scroll,) India
Noida (Reciprocating) Thailand Rayong (Rotary)

4 04 LG Compressor LG Compressor 05 Contents Why LG
Compressor? Brief History & Factory Reciprocating Compressor –
Product Range – Nomenclature – Specification I Constant speed
– Specification I Inverter – Specification I Controller –
Attached / Detached Controller – Mounting – Packing &
Container Stuffing Quantity Linear Compressor – Product Range
– Nomenclature – Specification – Wiring Diagram – Accessory
Part – Packing & Container Stuffing Quantity

5 08 LG Reciprocating Compressor LG Reciprocating Compressor
09 Nomenclature Product type B : BLDC C : Constant Speed F :
Linear Size C : Compact L : Large M : Medium S : Small
Generation code (A-Z) B M A 098 N A M V Operating type Rated
voltage & frequency Code Voltage Hz Code Voltage Hz A /60 Q
110~ B 50/60 R 110~ C D 60 E ~ S T Code Voltage G RSIR M RSCR
F CSIR H CSR K RSIR N RSCR P CSIR R CSR V Inverter 200~ ~ F J
60 U 115~ K M ~240 50/60 L N 115~127 50/60 P Improvement order
A, B, C : Cu Wire H, J : Al Wire R134a TS Capacity EER COP
TS22LHEG RSIR ~240/ ASHRAE TS22LHAG RSIR 110/ ASHRAE TS24LATG
RSIR ~240/ ASHRAE TS24LJJG RSIR / ASHRAE TS24LHJG RSIR /
ASHRAE TS24LAAG RSIR 110/ ASHRAE TS24LHAG RSIR 110/ ASHRAE
TS24LHTG RSIR ~240/ ASHRAE TS22LHAG RSIR 110/ ASHRAE TS22LHDG
RSIR / ASHRAE TS22LHCG RSIR 115/ ASHRAE TS24LADG RSIR / ASHRAE
TS24LATG RSIR / ASHRAE TS24LAAG RSIR 100/ ASHRAE TS24LHAG RSIR
110/ ASHRAE TS24LHUG RSIR 115~127/ ASHRAE TS24LAFG RSIR 127/
ASHRAE TS24LBDM RSCR / ASHRAE TS24LACG RSIR 115/ ASHRAE

TS24LHDG RSIR / ASHRAE TS24LHTG RSIR / ASHRAE Note 2 :
condition Evaporating temperature Condensing temperature
Ambient temperature TS Capacity Displacement (ex :
098=9.8cc/rev) Refrigerants L : R134a H : R134a HBP N : R600a

6 10 LG Reciprocating Compressor LG Reciprocating Compressor
11 R134a NS Capacity EER COP NS24LBEG RSIR ~240/ ASHRAE 157
NS24LABG RSIR / ASHRAE 147 NS24LAEG RSIR ~240/ ASHRAE 147
NS24LABG RSIR / ASHRAE 147 NS24LBCG RSIR 115/ ASHRAE 157
NS24LBCM RSCR 115/ ASHRAE 157 NS24LADG RSIR / ASHRAE 147
NS24LACG RSIR 115/ ASHRAE 147 NS30LABG RSIR / ASHRAE 147
NSA24LACG RSIR 115/ ASHRAE 147 NS30LAEG RSIR ~240/ ASHRAE 147
NS30LABG RSIR / ASHRAE 147 NS36LABG RSIR / ASHRAE 157 NS30LACG
RSIR 115/ ASHRAE 147 NS30LACM RSCR 115/ ASHRAE 147 NS36LAEG
RSIR ~240/ ASHRAE 157 NSA30LACG RSIR 115/ ASHRAE 147 NS36LACG
RSIR 115/ ASHRAE 157 NS36LADG RSIR / ASHRAE 157 NS36LADM RSCR
/ ASHRAE 157 NS36LABG RSIR / ASHRAE 157 NSA36LACG RSIR 115/
ASHRAE 157 R134a CMA Capacity EER COP CMA042LHJG RSIR / ASHRAE
171 CMA042LHDM RSCR / ASHRAE 171 CMA042LHCG RSIR 115/ ASHRAE
171 CMA042LHCM RSCR 115/ ASHRAE 171 CMA042LHUM RSCR 115~127/
ASHRAE 171 CMA053LHEG RSIR ~240/ ASHRAE 171 CMA053LHEM RSCR
~240/ ASHRAE 171 CMA057LHEM RSCR ~240/ ASHRAE 171 CMA057LHEG
RSIR ~240/ ASHRAE 171 CMA057LAEM RSCR ~240/ ASHRAE 171
CMA053LHDG RSIR / ASHRAE 171 CMA053LHCG RSIR 115/ ASHRAE 171
CMA053LHCM RSCR 115/ ASHRAE 171 CMA062LHEG RSIR ~240/ ASHRAE
171 CMA062LHEM RSCR ~240/ ASHRAE 171 CMA069LAEM RSCR ~240/
ASHRAE 171 CMA069LBEM RSCR ~240/ ASHRAE 171 CMA069LHEM RSCR
~240/ ASHRAE 171 CMA075LHDM RSCR / ASHRAE 171 Note 2 :
condition Evaporating temperature Condensing temperature
Ambient temperature Note 2 : condition Evaporating temperature
Condensing temperature Ambient temperature NS CMA

7 12 LG Reciprocating Compressor LG Reciprocating Compressor
13 R134a MA Capacity EER COP MA42LPJG RSIR / ASHRAE 172
MA42LMJM RSCR / ASHRAE 172 MA42LMJG RSIR / ASHRAE 172 MA42LHJM
RSCR / ASHRAE 172 MA45LDJG RSIR / ASHRAE 172 MA45LCJG RSIR /
ASHRAE 172 MA45LJJM RSCR / ASHRAE 172 MA45LHJM RSCR / ASHRAE

172 MA53LABM RSCR / ASHRAE 172 MA53LATG RSIR ~240/ ASHRAE 172
MA53LAJM RSCR / ASHRAE 172 MA53LJJG RSIR / ASHRAE 172 MA53LBJG
RSIR / ASHRAE 172 MA53LAJG RSIR / ASHRAE 172 MA53LAEG(AL) RSIR
~240/ ASHRAE 180 MA53LAEM(AL) RSCR ~240/ ASHRAE 180 MA57LBJG
RSIR / ASHRAE 172 MA57LABM RSCR / ASHRAE 180 MA57LAEG RSIR
~240/ ASHRAE 172 MA57LAEM(AL) RSCR ~240/ ASHRAE 180
MA57LBEG(AL) RSIR ~240/ ASHRAE 180 MA57LBJG RSIR / ASHRAE 177
MA57LJJG RSIR / ASHRAE 177 MA53LHEM RSCR ~240/ ASHRAE 172
MA57LDJM RSCR / ASHRAE 177 MA53LBCG RSIR 115/ ASHRAE 172
MA53LBCM RSCR 115/ ASHRAE 172 MA62LCEG RSIR ~240/ ASHRAE 180
MA62LCEM RSCR ~240/ ASHRAE 180 MA62LDEG RSIR ~240/ ASHRAE 172
MA53LAUG RSIR 115~127/ ASHRAE 172 MA62LBJG RSIR / ASHRAE 177
MA62LJJG RSIR / ASHRAE 177 MA62LDJM RSCR / ASHRAE 177 MA62LBEG
RSIR ~240/ ASHRAE 177 MA62LCEG RSIR ~240/ ASHRAE 177 MA53LADG
RSIR / ASHRAE 172 MA53LADM RSCR / ASHRAE 172 MA53LCCM RSCR
115/ ASHRAE 172 MA53LABM RSCR / ASHRAE 172 MA69LKEM RSCR ~240/
ASHRAE 177 MA69LJEG RSIR ~240/ ASHRAE 177 MA69LJEP CSIR ~240/
ASHRAE 177 MA69LHEM RSCR ~240/ ASHRAE 177 MA69LHEG RSIR ~240/
ASHRAE 177 R134a MA / MC MA MC LQ Capacity EER COP MA69LHEP
CSIR ~240/ ASHRAE 177 MA57LADM RSCR / ASHRAE 180 MA57LABM RSCR
/ ASHRAE 180 MA69LDEG RSIR ~240/ ASHRAE 172 MA69LCEG RSIR
~240/ ASHRAE 180 MA69LCEM RSCR ~240/ ASHRAE 180 MA69LAEM RSCR
~240/ ASHRAE 177 MA72LBJG RSIR / ASHRAE 177 MA72LHEM RSCR
~240/ ASHRAE 177 MA72LKEM RSCR ~240/ ASHRAE 177 MA72LBEM RSCR
~240/ ASHRAE 177 MA72LJEP CSIR ~240/ ASHRAE 177 MA72LJEG RSIR
~240/ ASHRAE 177 MA72LHEG RSIR ~240/ ASHRAE 177 MA88LAEP CSIR
~240/ ASHRAE 177 MA98LAEM RSCR ~240/ ASHRAE 182 MC53LBEM RSCR
~240/ ASHRAE 172 MC57LAEM RSCR ~240/ ASHRAE 177 MC57LBEM RSCR
~240/ ASHRAE 177 MA57LBJM RSCR / ASHRAE 177 LQ75LAEM RSCR
~240/ ASHRAE 203 LQ86LAEM RSCR ~240/ ASHRAE 203 Remark
LQ69LAUM RSCR 115~127/ ASHRAE 203 E-PTC LQ69LAUM RSCR 115~127/
ASHRAE 203 LQ69LAUH RSCR 115~127/ ASHRAE 203 E-PTC LQ69LADM
RSCR / ASHRAE 203 LQ75LAUM RSCR 115~127/ ASHRAE 203 E-PTC
LQ100LAJH CSR / ASHRAE 203 LQ86LADM RSCR / ASHRAE 203 Note 2 :
condition Evaporating temperature Condensing temperature
Ambient temperature LQ

8 14 LG Reciprocating Compressor LG Reciprocating Compressor
15 R134a LX Capacity EER COP LX67LABM RSCR / ASHRAE 200
LX67LHBM RSCR / ASHRAE 203 LX72LATG RSIR ~240/ ASHRAE 200
LX72LBEG RSIR ~240/ ASHRAE 200 LX72LAAM RSCR 110/ ASHRAE 200
LX72LATF CSIR ~240/ ASHRAE 200 LX72LATH CSR ~240/ ASHRAE 200
LX72LAEM RSCR ~240/ ASHRAE 200 LX72LHJH CSR / ASHRAE 203
LX72LHJM RSCR / ASHRAE 203 LX72LHJF CSIR / ASHRAE 203 LX67LAQG
RSIR 100~115/ ASHRAE 200 LX86LABM RSCR / ASHRAE 203 LX86LBEG
RSIR ~240/ ASHRAE 200 LX86LBEF CSIR ~240/ ASHRAE 200 LX86LCEG
RSIR ~240/ ASHRAE 203 LX86LHEM RSCR ~240/ ASHRAE 203 LX86LHJF
CSIR / ASHRAE 203 LX67LABM RSCR / ASHRAE 200 LX67LAFM RSCR
127/ ASHRAE 200 LX67LHBM RSCR / ASHRAE 203 LX86LPBP CSIR /
ASHRAE 203 LX86LAEG RSIR ~240/ ASHRAE 203 LX72LATG RSIR /
ASHRAE 200 LX72LBQG RSIR 100~115/ ASHRAE 200 LX72LAAM RSCR
110/ ASHRAE 200 LX72LATF CSIR / ASHRAE 200 LX72LATH CSR /
ASHRAE 200 LX72LHQF CSIR 100~115/ ASHRAE 203 LX95LAAH CSR 110/
ASHRAE 203 LX95LABH CSR / ASHRAE 203 LX86LACM RSCR 115/ ASHRAE
203 LX86LAQM RSCR 100~115/ ASHRAE 203 LX86LPBP CSIR / ASHRAE
203 LX86LADM RSCR / ASHRAE 203 LX86LABM RSCR / ASHRAE 203
LX86LPDP CSIR / ASHRAE 200 LX110LAJH CSR /50 2 1, ASHRAE 203
LX110LAJM RSCR /50 2 1, ASHRAE 203 LX110LAEH CSR ~240/50 2 1,
ASHRAE 203 LX110LAEM RSCR ~240/50 2 1, ASHRAE 203 LX R134a LX
1 Capacity EER COP LX110LAAH CSR 110/50 2 1, ASHRAE 203
LX110LQJG RSIR /50 2 1, ASHRAE 200 LX110LHJH CSR /50 2 1,
ASHRAE 203 LX110LAJM RSCR / , ASHRAE 203 LX95LAAH CSR 110/ ,
ASHRAE 203 LX95LADH CSR / , ASHRAE 203 LX95LABH CSR / , ASHRAE
203 LX95LBQH CSR 100~115/ , ASHRAE 203 LX95LAFH CSR 127/ ,
ASHRAE 203 LX95LAQH CSR 100~115/ , ASHRAE 203 LX110LAAH CSR
110/ , ASHRAE 203 LX110LPDP CSIR / , ASHRAE 203 LX125LAJM RSCR
/ , ASHRAE 203 Note 2 : condition Evaporating temperature
Condensing temperature Ambient temperature

9 16 LG Reciprocating Compressor LG Reciprocating Compressor
17 R600a NS CSA Capacity EER COP NS36NAAG RSIR 110/ ASHRAE 157
NS36NAAG RSIR 110/ ASHRAE 157 NSA43NACM RSCR 115/ ASHRAE 157
NSA43NACG RSIR 115/ ASHRAE 157 CSA043NHEG RSIR ~240/ ASHRAE
167 CSA043NHAG RSIR 110/ ASHRAE 167 CSA047NHEG RSIR ~240/

ASHRAE 167 CSA043NHAG RSIR 110/ ASHRAE 167 CSA053NHEG RSIR
~240/ ASHRAE 167 CSA057NHEG RSIR ~240/ ASHRAE 167 CSA057NJEG
RSIR ~240/ ASHRAE 157 CSA062NHAG RSIR 110/ ASHRAE 167
CSA062NHEG RSIR ~240/ ASHRAE 167 CSA057NHCG RSIR 115/ ASHRAE
167 CSA069NHAG RSIR 110/ ASHRAE 167 CSA069NHEG RSIR ~240/
ASHRAE 167 CSA062NHAG RSIR 110/ ASHRAE 167 CSA075NJEG RSIR
~240/ ASHRAE 157 CSA075NHEG RSIR ~240/ ASHRAE 167 CSA075NHEM
RSCR ~240/ ASHRAE 167 CSA069NHCG RSIR 115/ ASHRAE 167
CSA069NHAG RSIR 110/ ASHRAE 167 CSA075NHCG RSIR 115/ ASHRAE
167 R600a CMA Capacity EER COP Remark CMA057NAAG RSIR 110/
ASHRAE 171 CMA057NAEM RSCR ~240/ ASHRAE 171 CMA057NAEM RSCR
~240/ ASHRAE 171 E-PTC CMA057NHEM RSCR ~240/ ASHRAE 171
CMA057NHEM RSCR ~240/ ASHRAE 171 E-PTC CMA062NAEM RSCR ~240/
ASHRAE 171 CMA062NAEM RSCR ~240/ ASHRAE 171 E-PTC CMA062NHEM
RSCR ~240/ ASHRAE 171 CMA062NHEM RSCR ~240/ ASHRAE 171 E-PTC
CMA057NAAG RSIR 110/ ASHRAE 171 CMA069NJEM RSCR ~240/ ASHRAE
171 CMA069NAEM RSCR ~240/ ASHRAE 171 CMA069NAEM RSCR ~240/
ASHRAE 171 E-PTC CMA069NHEM RSCR ~240/ ASHRAE 171 CMA069NHEM
RSCR ~240/ ASHRAE 171 E-PTC CMA069NHAM RSCR 110/ ASHRAE 171
CMA075NAEM RSCR ~240/ ASHRAE 171 CMA075NAEM RSCR ~240/ ASHRAE
171 E-PTC CMA075NHEM RSCR ~240/ ASHRAE 171 CMA075NHEM RSCR
~240/ ASHRAE 171 E-PTC CMA075NHAM RSCR 110/ ASHRAE 171
CMA069NHAM RSCR 110/ ASHRAE 171 CMA082NHEM RSCR ~240/ ASHRAE
171 CMA082NHEM RSCR ~240/ ASHRAE 171 E-PTC CMA082NJEG RSIR
~240/ ASHRAE 171 CMA082NAEM RSCR ~240/ ASHRAE 171 Note 2 :
condition Evaporating temperature Condensing temperature
Ambient temperature Note 2 : condition Evaporating temperature
Condensing temperature Ambient temperature NS / MSA / CSA CMA

10 18 LG Reciprocating Compressor LG Reciprocating Compressor
19 R600a CMA Capacity EER COP Remark CMA082NAEM RSCR ~240/
ASHRAE 171 E-PTC CMA089NHEM RSCR ~240/ ASHRAE 171 CMA089NHEM
RSCR ~240/ ASHRAE 171 E-PTC CMA089NJEG RSIR ~240/ ASHRAE 171
CMA075NHAM RSCR 110/ ASHRAE 171 CMA089NAEM RSCR ~240/ ASHRAE
171 CMA089NAEM RSCR ~240/ ASHRAE 171 E-PTC CMA089NBEM RSCR
~240/ ASHRAE 171 CMA098NJEM RSCR ~240/ ASHRAE 171 CMA098NAEM
RSCR ~240/ ASHRAE 171 CMA098NAEM RSCR ~240/ ASHRAE 171 E-PTC

CMA098NJEG RSIR ~240/ ASHRAE 171 CMA098NHEM RSCR ~240/ ASHRAE 171 CMA098NHEM RSCR ~240/ ASHRAE 171 E-PTC CMA098NJEM RSCR ~240/ ASHRAE 171 CMA089NHDM RSCR / ASHRAE 171 CMA089NHDM RSCR / ASHRAE 171 E-PTC CMA110NAEM RSCR ~240/ ASHRAE 171 CMA110NAEM RSCR ~240/ ASHRAE 171 E-PTC CMA110NAEM RSCR ~240/ ASHRAE 171 CMA110NAEM RSCR ~240/ ASHRAE 171 CMA098NARM RSCR 110~127/ ASHRAE 171 CMA098NADM RSCR / ASHRAE 171 CMA121NAEM RSCR ~240/ ASHRAE 171 CMA121NAEM RSCR ~240/ ASHRAE 171 CMA110NADM RSCR / ASHRAE 171 R600a MB MQ LQ Capacity EER COP MB62NJEG RSIR ~240/ ASHRAE 172 MB82NAEM RSCR ~240/ ASHRAE 177 MB82NJEG RSIR ~240/ ASHRAE 177 MB82NJEM RSCR ~240/ ASHRAE 177 MB98NJEG RSIR ~240/ ASHRAE 177 MQ88NAEM RSCR ~240/ ASHRAE 180 MQ98NAJH CSR / ASHRAE 180 MQ98NAEM RSCR ~240/ ASHRAE 180 Remark LQ119NAEM RSCR ~240/ ASHRAE 203 E-PTC LQ119NAEM RSCR ~240/ ASHRAE 203 LQ125NAEM RSCR ~240/ ASHRAE 203 LQ140NAEM RSCR ~240/ ASHRAE 203 LQ119NAQM RSCR 100~115/ ASHRAE 203 LQ140NAEM RSCR ~240/ ASHRAE 203 LQ140NAEH CSR ~240/ ASHRAE 203 LQ140NAEM RSCR ~240/ ASHRAE 203 E-PTC Note 2 : condition Evaporating temperature Condensing temperature Ambient temperature Note 2 : condition Evaporating temperature Condensing temperature Ambient temperature CMA MB / MQ LQ

11 20 LG Reciprocating Compressor LG Reciprocating Compressor
21 Application : HBP Application : HBP R134a CMA MA Capacity
EER COP CMA042HHDM RSCR / , ASHRAE 161 CMA053HHDM RSCR / ,
ASHRAE 161 CMA062HAEM RSCR ~240/ , ASHRAE 171 CMA062HHDM RSCR
/ , ASHRAE 171 CMA075HAEM RSCR ~240/ , ASHRAE 171 CMA075HADM
RSCR /60 0 2, ASHRAE 171 CMA089HADM RSCR / , ASHRAE 171
MA42HJEP CSIR ~240/ , ASHRAE 172 MA53HJEF CSIR ~240/ , ASHRAE
172 MA53HAEF CSIR ~240/ , ASHRAE 172 MA62HAEG RSIR ~240/ ,
ASHRAE 177 MA62HAEF CSIR ~240/ , ASHRAE 177 MA72HAEP CSIR
~240/ , ASHRAE 177 Note 2 : condition Evaporating temperature
Condensing temperature Ambient temperature ASHRAE 7.2 C 54.4 C
35 C R134a LX Capacity EER COP LX72HAEP CSIR ~240/ , ASHRAE
203 LX72HAEG RSIR ~240/ , ASHRAE 203 LX72HPDP CSIR /60 0 2,
ASHRAE 200 LX86HAEP CSIR ~240/ , ASHRAE 203 LX86HAEG RSIR
~240/50 5 2, ASHRAE 203 LX86HPDP CSIR / , ASHRAE 200 LX110HAEP

CSIR ~240/ ,613 1, ASHRAE 203 LX110HAEM RSCR ~240/ ,772 1,
ASHRAE 203 LX125HPJP CSIR / ,950 1, ASHRAE 203 LX110HPDP CSIR
/ ,9 1, ASHRAE 200 LX110HACF CSIR 115/ ,129 1, ASHRAE 203
LX125HPDP CSIR / ,764 1, ASHRAE 203 Note 2 : condition
Evaporating temperature Condensing temperature Ambient
temperature ASHRAE 7.2 C 54.4 C 35 C CMA MA LX

Mbsm_dot_pro_private_PDF_LX110LQJGTélécharger



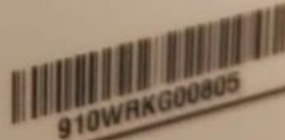




REFRIGERATOR-FREEZER
MODEL : KF-P8903HLP

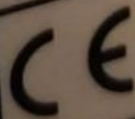
RATING	220V ~ 50Hz
CLIMATE CLASS	T
RATED CURRENT	1.73A
FREEZING CAPACITY	12.0kg/24Hr
DEFROSTING INPUT	260W
RATED INPUT OF HEATER SHEATH	260W
STORAGE/GROSS VOL. TOTAL	538 ℓ / 606 ℓ
-FREEZER COMPARTMENT	173 ℓ / 228 ℓ
-REFRIGERATOR COMPARTMENT	365 ℓ / 378 ℓ
REFRIGERANT	R134a 180g
INSULATION BLOWING GAS	CYCLOPENTANE
DIMENSIONS	894(W)x753(D)x1753(H)mm

MADE IN EUROPE
SERIAL NO.



910WRKG00805

TAB34634781





Private Picture Copyright: WWW.MBSM.PRO





LG

LX110LQJG

R134a 1PH 220V ~ 50Hz
THERMALLY PROTECTED
RoHS LG Electronics Inc. MADE IN KOREA



P8C2220101310006

compressor, R134a, AE4430Y-FZ, HERMÉTIQUE-TECUMSEH, 220-240V 50Hz, 1/4HP++, HMBP, 1/3HP, 337W, AEZ4430Y

written by Lilianne | 8 December 2021

Compressor Tecumseh L` Unite AEZ4430Y/AE4430Y, HBP – R134a, 220 – 240V, 50 Hz, 1 phase *Warning – equivalent goods: AE4430Y will be delivered

Refrigerant:	R134a
Power range(W):	701 – 1000 W
Connecting size:	3/16"
Suction:	1/4"
Working area:	HBP
Design type:	Hermetic
Model series:	AE
Use with:	Expansion/Capillary
Power supply:	230 V
Oil type:	POE
Engine type:	CSIR
Article condition:	New
Info:	Oil filled
Shipping weight:	12,20 Kg
Contents:	1,00 Pieces

Dimensions (height):	19,90 cm
customs tariff number:	84143081
Manufacturer:	Tecumseh L` Unite
Model:	AEZ4430Y
Stroke volume (cm3):	8,8
Performance condition:	+5 / +50 °C
Power (W):	768
Engine type:	CSIR
dbA @ 1m:	50
Note:	Fan cooling necessary
Equipment:	Start-Capacitor 50 uF / 250V
Oil quantity (l):	0,35
Compressor type:	Piston
Suction (inch):	1/4
Discharge (inch):	3/16
Alternative:	AE4430Y



Private Picture Copyright : WWW.MBSM.PRO

f
Mbsm_dot_pro_private_PDF_AEZ4430YTélécharger
Compressor Tecumseh L` Unite AE4430Y/AEZ4430Y, HBP – R134a,

220 – 240V, 50 Hz, 1 phase, discharge: 8.02 cm³, oil type: POE, oil charge: 280 cm³, electrical equipment CSIR, cooling power: 702 W at +5 / +50 °C, connection: suction: 1/4 inch, discharge: 3/16 inch, sound level: 56 dBA, start capacitor: 50uF/250V, expansion device: capillary or with expansion valve, cooling: forced, height: 200 mm, weight: 9.7 kg



Embraco, Universal, EM45HHR, R134a, Refrigeration Compressor, Low, Medium & High Back Pressure, 1/8hp, Nominal Motor HP, For use with refrigerators, ice makers, frozen food cabinets, frozen food display cases, display windows, 115v

written by Lilianne | 8 December 2021

Embraco Universal EM45HHR R134a Refrigeration Compressor. Low,

Medium & High Back Pressure. 1/8 Nominal Motor HP. For use with refrigerators, ice makers, frozen food cabinets, frozen food display cases, display windows, etc.

Replaces Embraco EMI40HNR and EM45HNR and Tecumseh AEA3417YXA.

Motor: Resistive Start Inductive Run & Captive Start Inductive Run (RSIR/CSIR)

Evaporating Temperatures: -10°F to 45°F

Product Specifications

BTU Capacity HBP:	1775
BTU Capacity LBP & MBP:	420
Horsepower (HP):	1/8
Locked Rotor Amps (LRA):	17.0
Motor Type:	RSIR/CSIR
Required Refrigerant :	R134a
Skill Level:	
Starting Torque:	Normal
Volts (V):	115

Mbsm_dot_pro_private_PDF_EM45HHR-1Télécharger

Mbsm_dot_pro_private_PDF_EM45HHRTélécharger



Approximate base metal temperature

written by Lilianne | 8 December 2021
approximate base metal temperature

التمييز بين درجات حرارة المعدن خلال عملية التلحيم

#mbsmpro



**Compressor, r600a, 1/5HP,
LBP, 149W, htk12aa,
Electrolux, Brandt, 220-240V
50Hz, Run Capacitor: 4.0 μ F (
5.0 μ F as alternative) ,
Motor type RSCR/RSIR**

written by Lilianne | 8 December 2021
compressor/compressor ACC – Electrolux HTK12AA, LBP – R600a,
Power consumption 1/5HP++, 220-240V/1/50Hz, Motor type RSIR,
Injection: Capillary operation, Displacement 11.1 cm³, Oil
type mineral oil, Oil quantity 170 cm³, Power 116 W at -25 /
+55°C, Power consumption 149 W, Current 0.77, Weight
8.6Cooling capacity

-10 °C	-15 °C	-20 °C	-25 °C	-30 °C	-35 °C
300	240	188	144	107	78
Shipping Class				Standard	
Scope Of Application				LBP	
Lieferzeit				2-3 Wochen	
Type Of Construction				Piston	
Condensation Temperature				55°C	
Maker				ACC	
Manufacturer No.				HPY12AA	
Displacement In Cm3				11.1	
Measuring Requirements				Ashrae	
Refrigerants				R600a	
Series				HPY	
Condensing Units Compressors				Compressors	
Suspense				220-240V	
Weight In Kg				12.7	

1. Be the first to review this product

Mbsm_dot_pro_private_PDF_HTK12AA-1-1Télécharger
Mbsm_dot_pro_private_PDF_HTK12aa-1Télécharger



Cabine de douche carré 80cm Décors PALMIER

written by Lilianne | 8 December 2021

Cabine de douche carré 80cm Décors PALMIER



Compressor, FLB075LBNA, LG-Original New Linear Refrigerator Compressor, LG-compressor, Inverter 0~220V 53Hz, R134a(165g), LSXC22386, LSXC22326, LSXC22336, 1/4HP

written by Lilianne | 8 December 2021

FLS075LANA is the new **compressor** model number It replaces these older **LG/Kenmore Elite compressor** versions: FC75LBNA FLA075LANA FLB075LANA **FLB075LBNA**

Compressor Fls075lana_replacement A: Fla075lana, Flb075lana

Compressor, FLB075LBNA, LG-Original New Linear Refrigerator Compressor, LG-compressor, Inverter 0~220V 53Hz, R134a(165g), LSXC22386, LSXC22326, LSXC22336, 1/4HP

New version LG Compressor part # TCA38091801 & Software Jig

TCA35911910

Compressor has a purple decal and red decal on top warning about the software update.

FLS075LANA is the new compressor model number

It replaces these older LG/Kenmore Elite compressor versions:

FC75LBNA

FLA075LANA

FLB075LANA

FLB075LBNA



Caj4492A, R12, Tecumseh, Refrigeration, Compressor, 3/4HP, Medium/High Back Pressure

written by Lilianne | 8 December 2021



Caj4492A, R12, Tecumseh, Refrigeration, Compressor, 3/4HP, Medium/High Back Pressure

**COMPRESSOR, EMBRACO,
EGAS100HLP, EGAS 100 HLP,
EGAS 100HLP, R-134, -23.3 C,
243 W, sharp sj-48c, 384
LITRE, 1/4++ or 1/3hp,
220-240 V 50 Hz**

written by Lilianne | 8 December 2021



COMPRESSOR, EMBRACO, EGAS100HLP, EGAS 100 HLP, EGAS 100HLP,
R-134, -23.3 C, 243 W, sharp sj-48c, 384 LITRE, 1/4++ or
1/3hp, 220-240 V 50 Hz