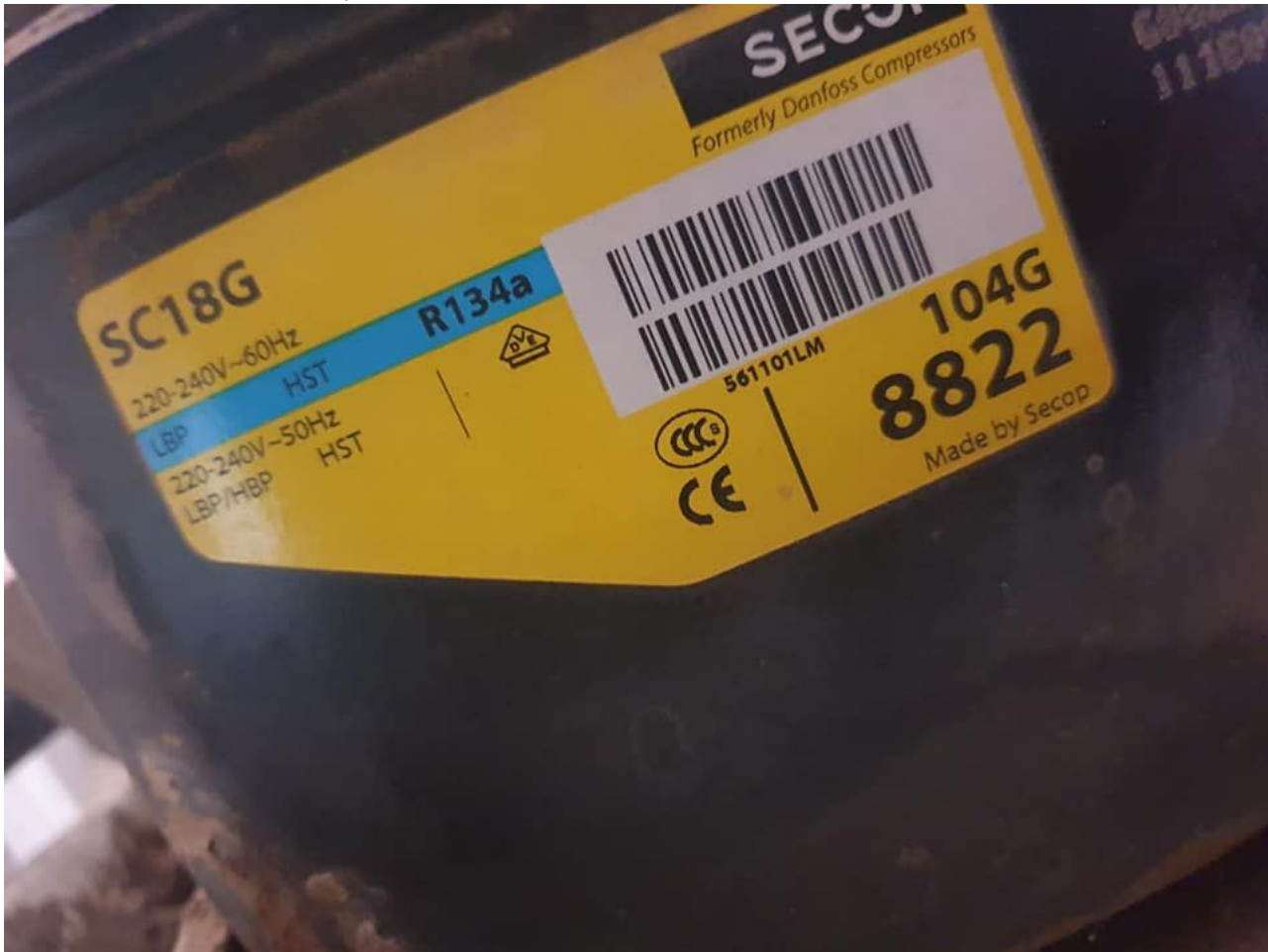


Compressor, Danfoss, Secop, SC18G, 104g8822, 1/2HP, R134A, 685 Litres, Presentoire cokacolla, LBP/HBP

Category: compressor

written by Lilianne | 8 May 2021



Private Picture Copyright : WWW.MBSM.PRO



Private Picture Copyright : WWW.MBSM.PRO

Overview Quick details Type : compressor Brand Name : SECOP Model Number : ASC18G Certification : CE, CCC After-sales service provided : No overseas service provided. Gas : R134a Type : Piston Power Source : AC Power Lubrication Style : Lubricated Mute : Yes Package : wooden case or carton Application : Danfoss Freezer Compressor Delivery time : 7-20 Days Special period : 1 month Supply Ability Supply Ability 3000 Piece / Pieces per Month Packaging and shipping Packaging Details 1. For small order quantity: packed with a wooden case or carton.

2. For full container: packed with pallet, 24 pallets in one 20ft container. posture GuangZhou, Huangpu port Processing time: : A. 7-30 days

1. Product name:

1, Danfoss refrigeration / refrigeration compressor SC18G

2. Type: LBP 3. Voltage

: 220 ~ 240V / 50Hz, 1 / 2HP

| No | Model | HP | Temperature | Electricity | Refrigerant |
|----|--------|------|-------------|---------------|-------------|
| 1 | SC10C | 1/3 | LBP | 220~240V/50HZ | R22 |
| 2 | SC12C | 3/8 | LBP | 220~240V/50HZ | R22 |
| 3 | SC15CM | 1/2 | LBP | 220~240V/50HZ | R22 |
| 4 | SC18CM | 5/8 | LBP | 220~240V/50HZ | R22 |
| 5 | SC10D | 3/8 | MBP | 220~240V/50HZ | R22 |
| 6 | SC12D | 1/2 | MBP | 220~240V/50HZ | R22 |
| 7 | SC15D | 5/8 | MBP | 220~240V/50HZ | R22 |
| 8 | SC10G | 5/16 | MBP | 220~240V/50HZ | R22 |
| 9 | SC12G | 1/3 | MBP | 220~240V/50HZ | R134A |
| 10 | SC15G | 3/8 | MBP | 220~240V/50HZ | R134A |
| 11 | SC18G | 1/2 | MBP | 220~240V/50HZ | R134A |
| 12 | SC21G | 5/8 | MBP | 220~240V/50HZ | R134A |
| 13 | SC10CL | 1/3 | LBP | 220~240V/50HZ | R404a |
| 14 | SC12CL | 3/8 | LBP | 220~240V/50HZ | R404a |
| 15 | SC15CL | 1/2 | LBP | 220~240V/50HZ | R404a |
| 16 | SC18CL | 5/8 | LBP | 220~240V/50HZ | R404a |
| 17 | SC21CL | 7/8 | LBP | 220~240V/50HZ | R404a |

Private Picture Copyright : WWW.MBSM.PRO

4. Gas consumption: R134a



Everest

| | | | | | |
|--|-----------------|---------------|-------------|------|-------|
| Number | : 1117825 | Model | : EV 024 SD | | |
| Volume | : 1.2 CBM | Capacity | : 685 LTRS | | |
| Weight | : 157 KG | Color/Logo | : RED | | |
| Consumption | : 14 Kwh/24 hrs | Date | : DEC 2011 | | |
| 0 Hz | : 50 | Ref. Type | : R134A | GRMS | : 475 |
| 2 Watt | : 646 | Climate Class | : D | | |
| Capacity at 0 Deg.C evaporator temperature | : 980 | | | | |

MADE IN EGYPT



Wattage of Lamps: 20(TOP) 40(SIDE)





Private Picture Copyright : WWW.MBSM.PRO



Private Picture Copyright : WWW.MBSM.PRO

PARIS 210 (-)



AHT

Serialnr 409974 00007779

Gerätedaten
cabinet data

Innenraumbeleuchtung
Light inside cabinet

class 3 (25°C/60%rH)

(-)

Nennspannung/frequ. Nom Voltg./frequ.
Tension/Fréquence nominale

220-240V/50Hz

220-240V/50Hz

Nennaufnahme Nom Consump.
Prise de courant nominale

480 W

50 W

Nennstrom Nom Current
Courant nominal

2,6 A

0,21 A

Schutzart Protection class
Type de protection

IP 21

IP 21

Typ Type

B 825

LE221

Energieaufnahme Energy consump.
Absorption d'énergie

9,2 kWh/24h

Absicherung Fuse
Protection par fusibles

16 A

Kältemittel(Menge) Refrigerant(Quan)
Type / Quantité de réfrigérant

R404A/0,250 kg

Nettoinhalt Net Content
Capacité nette

724 dm³

Lampe Lamp

max. zul. Betriebsüberdruck 30 bar
Eigensicher nach VVV-VBG 20, § 7.3
Dichtheit geprüft

Surpression max. de service admise
Sécurité propre selon VVV-VBG 20
Imperméabilité examinée



ENTSORGUNGSHINWEIS

WARMEDÄMMSTOFF: PU MIT PENTAN

Das Gerät nicht dem normalen Müll, sondern als Sondermüll entsprechend den Vorschriften für die Entsorgung zu behandeln.

Darauf achten, daß dabei die Rohrleitungen nicht beschädigt werden.

DISPOSAL
THERMAL INSULATION: PU WITH PENTAN
The cabinet is not standard waste but has to be disposed of according to the local waste disposal regulations. Make sure that the tubes are not damaged.

MISE AU REBUT
ISOLATION THERMIQUE: PU AVEC PENTANE

Votre bahut n'est pas de rebut ordinaire. Il doit être traité en tant que déchet spécial. Faites attention de ne pas endommager les conduites.

COMPRESSOR, DONPER, NE6213CK, 1/2hp, R404a

Category: compressor

written by Lilianne | 8 May 2021

Ne6213Ck Compressor R404A Med Temp 12 Disp 1080W @ -5 1/2Hp 240V 50Hz



Private Picture Copyright : WWW.MBSM.PRO



NE6213CK
220-240V-50Hz 1PH
THERMALLY PROTECTED
RoHS CE ACC0083
http://www.danfoss.com
0126741729011801180
R404A

NE6213CK COMPRESSOR R404A MED TEMP 12 DISP 1080W @ -5 1/2HP 240V 50HZ

Displacement: 12 cm³

Power: 1/2 HP

Oil Charge: 450 +/- 10 mL

Cooling capacity: 1080W @-5 SST

COP: ASHRAE 1.80

Private Picture Copyright : WWW.MBSM.PRO

Testing condition:

| Test conditions | H.B.P | |
|-------------------|---------|---------|
| | ASHRAE | CECOMAF |
| Evaporating Temp. | +7.2°C | +5°C |
| Ambient Temp. | +35.0°C | +32°C |
| Condensing Temp. | +54.4°C | +55°C |
| Suction Temp. | +35.0°C | +32°C |
| Subcooling Temp. | +46.1°C | +55°C |

3. Running Condition

| | |
|-----------------------------------|--------------------|
| Ambient temp. | 0~43°C |
| Evaporating temp. | -15~10°C |
| Voltage range | 187~264V |
| Max. condensing temp. | 65°C |
| Max. winding temp. | 130°C |
| Max. shell temp. | 95°C |
| Max. discharge temp. | 120°C |
| Start voltage | 187V [5/5bar(abs)] |
| Shell min. resistance to pressure | 35bar |

Private Picture Copyright : WWW.MBSM.PRO

1. Compressor Type

| | |
|-------------------------|----------------------------|
| Compressor model | NE6213CK |
| Rated voltage/frequency | 220-240V~50Hz |
| Refrigerant | R404A |
| Application | High back pressure (H.B.P) |
| Cooling method | Fan Cooling |
| Start torque | High starting torque (HST) |
| Control device | Capillary tube |
| Motor type | CSIR |

Private Picture Copyright : WWW.MBSM.PRO

Mbsm_dot_pro_private_PDF_ne6213ck-compressorTélécharger

Whirlpool, Aspera, NE2125E, LBP, capacitive, start inductive run, hermetic compressor, R22, 1/4Hp++ or 1/3Hp-

Category: compressor

written by Lilianne | 8 May 2021

ompressor Aspera NE2125E, LBP – R22, 220-240V / 1 / 50Hz, stroke volume 8.78 cm³, LRA 11.0A, motor type CSIR, capillary tube / expansion valve operation, oil AB 46.Cooling

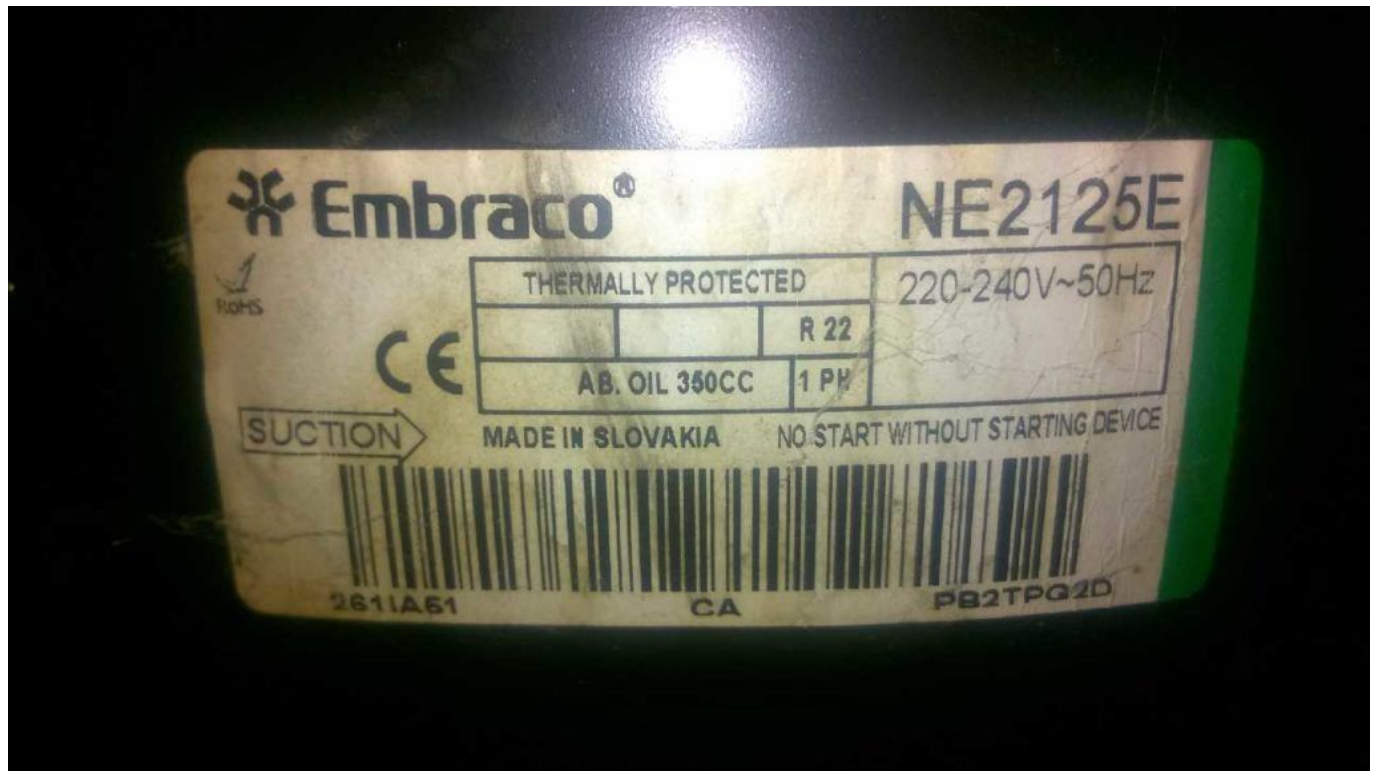
capacity measured for condensation temperature of: 45 ° C, Measurement conditions: ASHRAE

Unfortunately the compressor is no longer available.

If you would like an offer for an identical alternative, please email us or give us a short call, we will prepare an offer for you.Cooling capacity (W) at To

– 10 ° C – 15 ° C – 20 ° C – 25 ° C – 30 ° C

651 517 401 304 226



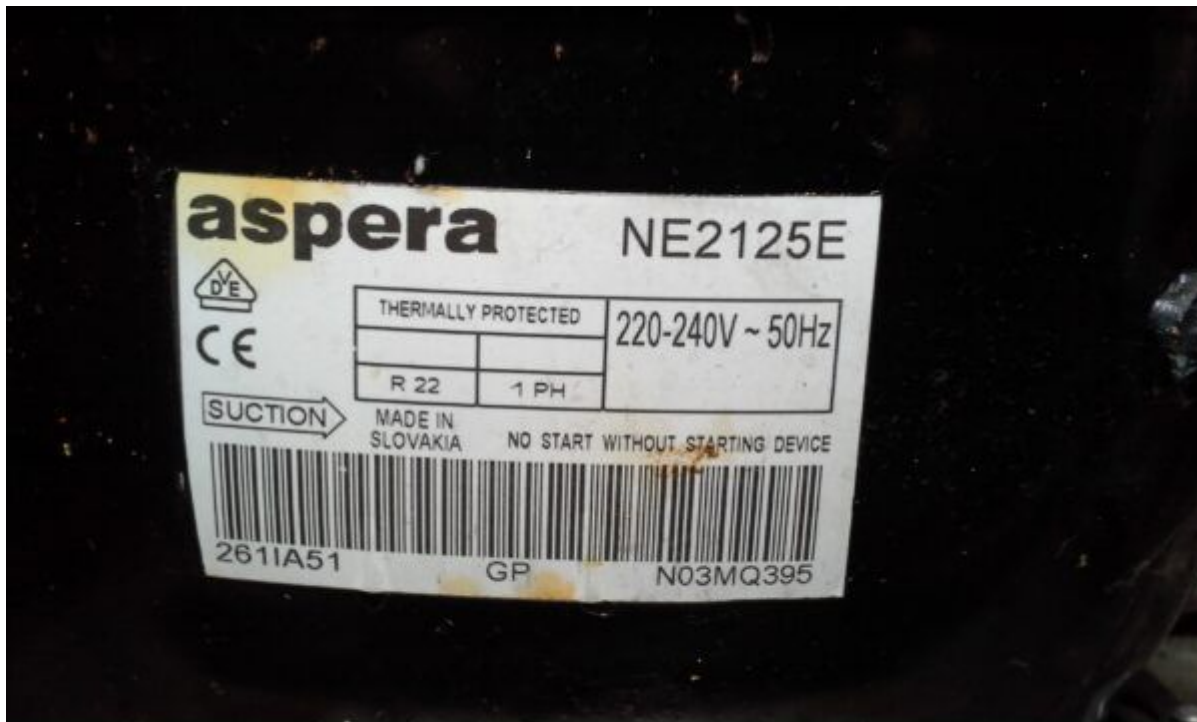
Private Picture Copyright : WWW.MBSM.PRO

R22 - LBP Applications

| COMPRESSOR | FREQUENCY | DIMENSION | |
|------------|-----------|-------------------------------------|---|
| | | (from -30°C to -5°C evap. temp.) | - |
| NE2125E | 50 Hz | 0.91 mm I.D. x 3.2 m | - |
| | 60 Hz | 0.91 mm I.D. x 2.85 m | - |
| NE2134E | 50 Hz | 0.91 mm I.D. x 2.8 m | - |
| | 60 Hz | 0.91 mm I.D. x 2.5 m | - |
| T2140E | 50 Hz | 0.91 mm I.D. x 2.6 m | - |
| | 60 Hz | 0.91 mm I.D. x 2.3 m | - |
| T2155E | 50 Hz | 1.20 mm I.D. x 3.9 m | - |
| | 60 Hz | 1.20 mm I.D. x 3.5 m | - |
| T2168E | 50 Hz | 1.20 mm I.D. x 3.3 m | - |
| | 60 Hz | 1.20 mm I.D. x 2.8 m | - |
| NJ2178E | 50 Hz | 1.20 mm I.D. x 3.0 m | - |

PictureS Mbsm Dot Pro : www.mbsm.pro

Private Picture Copyright : WWW.MBSM.PRO



Private Picture Copyright : WWW.MBSM.PRO



Private Picture Copyright : WWW.MBSM.PRO



Private Picture Copyright : WWW.MBSM.PRO



Private Picture Copyright : WWW.MBSM.PRO









Private Picture Copyright: WWW.MBSM.PRO

Mbsm_dot_pro_private_PDF_ne2125e-Embraco_VerdichterTélécharger

| | |
|-------------------------------------|----------------------|
| Shipping Class | Default |
| Scope Of Application | LBP |
| Delivery Time | 2-3 Weeks |
| Stock Availability | In Stock |
| Type | Reciprocating Piston |
| Condensation Temperature | 45 ° C |
| Manufacturer | Aspera |
| Manufacturer No. | NE2125E |
| Power In Hp | 1/4 + |
| Starting Torque | HST |
| Stroke Volume In Cm3 | 8.78 |
| Measurement Conditions | Ashrae |
| Refrigerant | R22 |
| Oil Type | IS046 |
| Series | NE |
| Condensing Units Compressors | Compressor |

Tension
Weight In Kg

220-240V
10.4

Reciprocating Compressors, Q Series,
Reciprocating Fixed Speed, R134a,
100g, LBP, QA66C14GAX5, RSIR, 145W,
1/5HP, 170L

Category: compressor

written by Lilianne | 8 May 2021



Private Picture Copyright: WWW.MBSM.PRO

MODEL QA66C14GAX5
220V ~ 50Hz 1PH R134a
THERMALLY PROTECTED
MATSUSHITA ELECTRIC IND. CO., LTD.
MADE IN MALAYSIA



Electrostar
الالكتروستار

Model **ES170 T**

طراز

W **136** وات

A **1.12** أمبير

HZ **50**

ذبذبة

Ser No.



018018

ممتثل

V

220

فولت

R134a

100 gm

وزن وسيط
التبريد

Total Capacity 170 Lit.

Class T

صنع في مصر

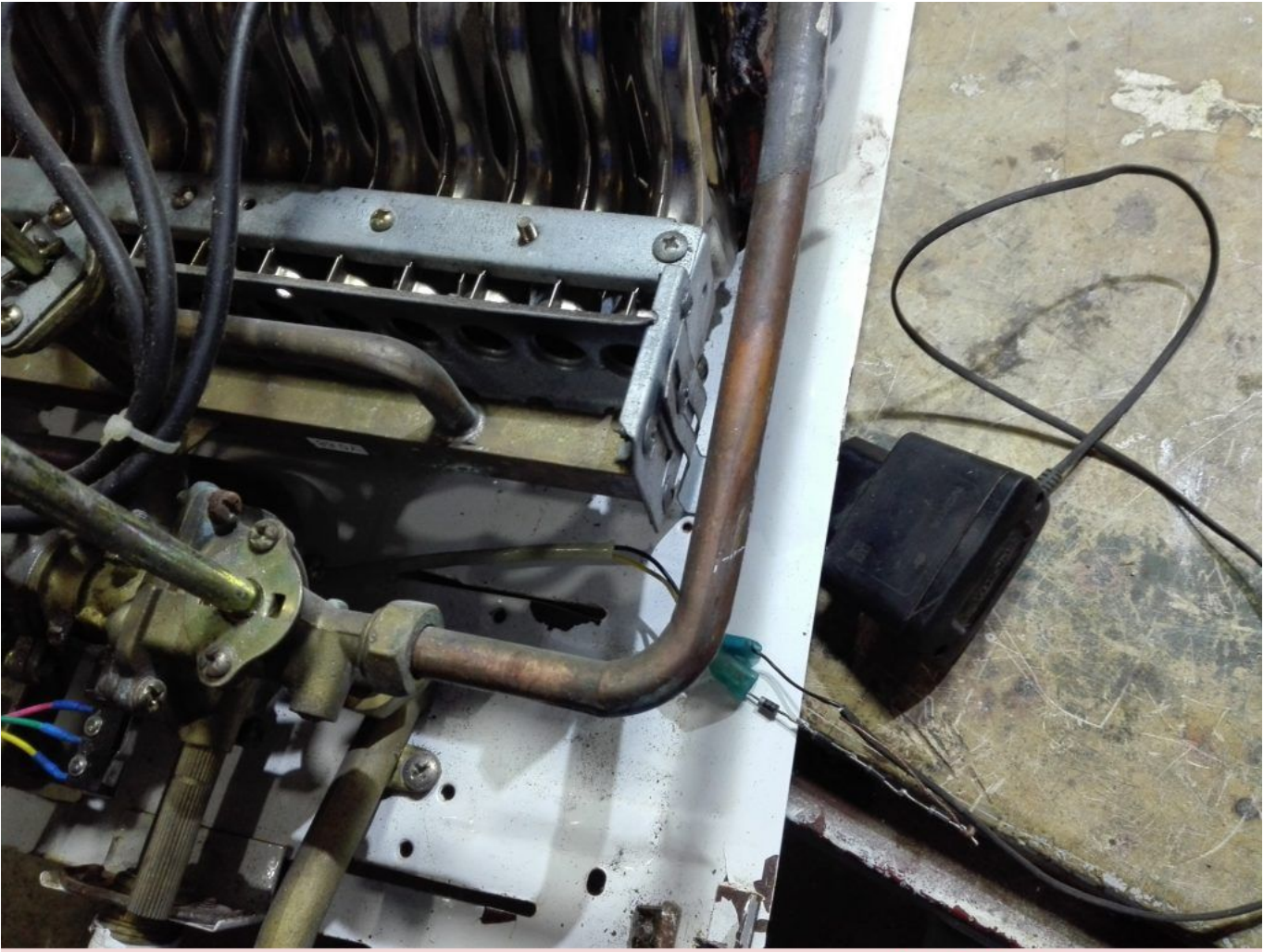
Reduire 5.0v d'un chargeur gsm portable Jusqu'à 3.0V Pour Allimenter un Chauffe-eau 10 Litre Électronique

Category: Développement,electricity,electronique
written by Lilianne | 8 May 2021

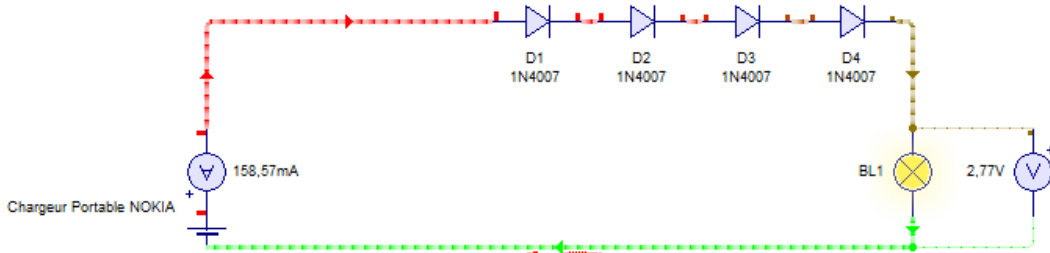
تقليل 5.0 فولت من شاحن جي إس إم محمول إلى 3.0 فولت لتشغيل سخان مياه إلكتروني بسعة 10 لترات

Reduire 5.0v d'un chargeur gsm portable Jusqu'à 3.0V Pour Allimenter un Chauffe-eau 10 Litre Électronique

Reduce 5.0v of a portable gsm charger to 3.0V to power a 10 liter electronic water heater



Private Picture Copyright : WWW.MBSM.PRO



Private Picture Copyright : WWW.MBSM.PRO

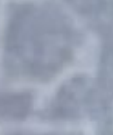


MIND Global Oy

Made in China

Model: FC0200 Output: 5V 1A

Input: AC 100-240V, 50-60Hz, 0.15A



01217

ERIC

CE

VI

Address: Karasaurus 2, 01610 Lappeenranta
FIN-00030013300004512 PHONE: 1022011



Private Picture Copyright: WWW.MBSM.PRO



Private Picture Copyright: WWW.MBSM.PRO





Private Picture Copyright: WWW.MBSM.PRO

Compresseur, MPT18LA, R-404A / R-507, Cubigel Compressors, 1/2 HP, LBP, CSR

Category: compressor

written by Lilianne | 8 May 2021

Le compresseur à piston hermétique à basse température Cubigel MPT18LA est utilisé dans les équipements de réfrigération avec des températures de fonctionnement d'évaporation inférieures à $-20\text{ }^{\circ}\text{C}$:

1. Réfrigérateurs
2. Congélateurs
3. Réfrigérées vitrines
4. Chambres frigorifiques pour produits surgelés.

Caractéristiques du compresseur Cubigel MPT18LA:

- Travailler sur le fréon R404a / R507a
- Application de LBP (Low Dack Pressure)
- Volume du cylindre 18 cm^3

- Capacité d'huile 450 cm³
- Type d'huile ISO VG 32 ESTER
- Courant de démarrage 19 A
- Poids 12,5 kg

Caractéristiques du moteur du compresseur Cubigel MPT18LA:

- Type de moteur CSR
- Puissance 1/2 CV
- Tension 200-220V 50Hz
- Tension admissible 170-242 V



cubigel
compressors

MPT18LA
220-240V-50Hz PH1

R404A
R507

THERMALLY PROTECTED

CE

MADE IN SPAIN

9041257434100130

09121

Compressor, AE4470Z-FZ3C, AE4470Z-FZ, Compressor Tecumseh, AE4470Z FZ, HBP/CBP, 1/2 HP, ++BIG, R-404a

Category: compressor

written by Lilianne | 8 May 2021

Données techniques

- Modèle: **AE4470Z**
- Gaz: **R-404a**
- Température/Pression: **Haute Pression**
- Puissance: **1/2 HP**
- Voltage: **230 V**
- Type De Courant: **Monophasé**
- Fréquence: **50 Hz**
- Type De Compresseur: **Hermétique**
- Décalage: **12.01 cm³**
- Cons.Énergie -10°C: **597 W**
- Cons.Énergie -5°C: **631 W**
- Cons.Énergie 0°C: **663 W**
- Cons.Énergie +5°C: **693 W**
- Cons.Énergie +10°C: **721 W**
- T° De Condensation: **40 °C**
- Capacité Frigorífica -20°C: **637 Kcal/h**
- Capacité Frigorífica -15°C: **796 Kcal/h**
- Capacité Frigorífica -10°C: **975 Kcal/h**
- Capacité Frigorífica -5°C: **1178 Kcal/h**
- Capacité Frigorífica 0°C: **1408 Kcal/h**
- Capacité Frigorífica 5°C: **1671 Kcal/h**
- Capacité Frigorífica 10°C: **1970 Kcal/h**
- Tipo Test: **EN.12900**

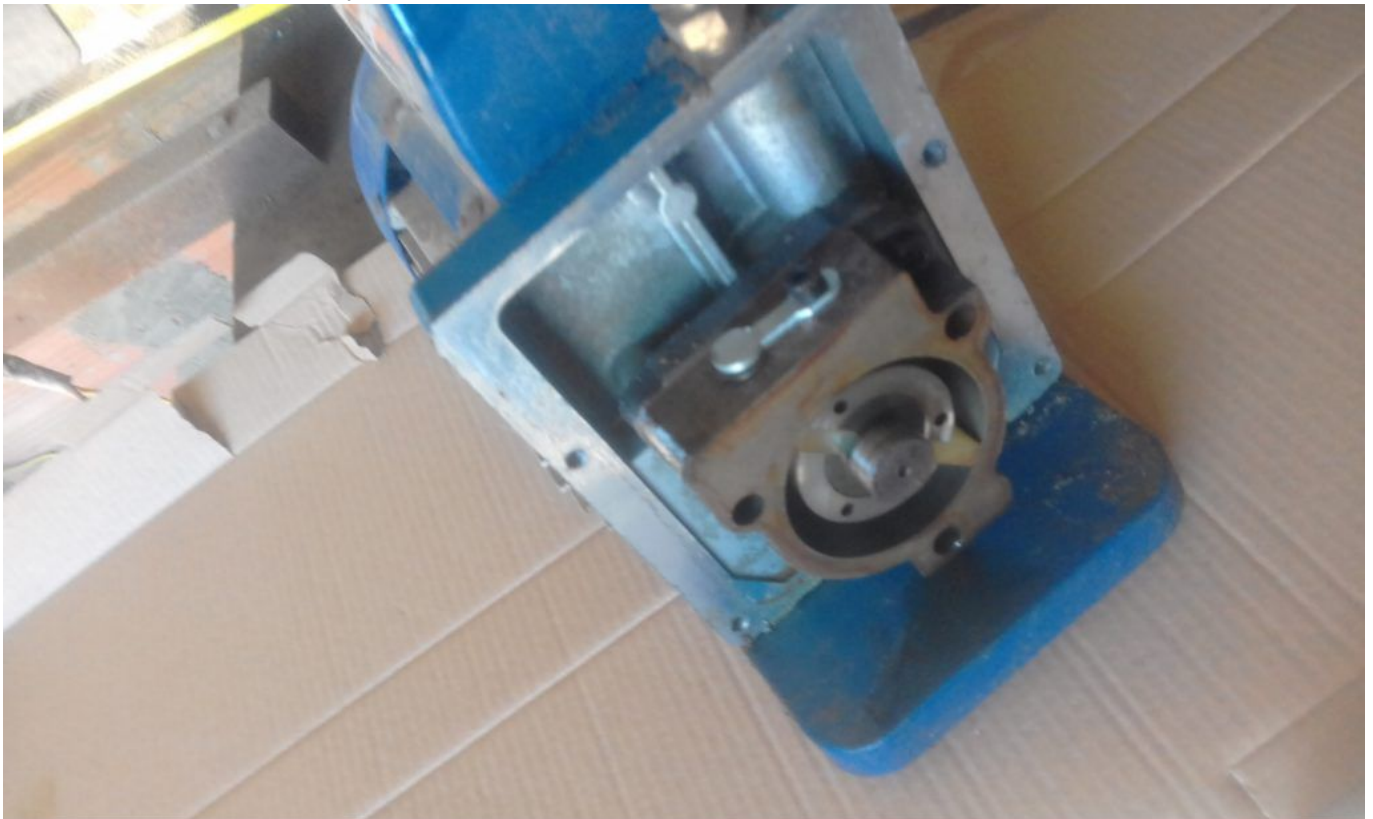


Mbsm_dot_pro_private_PDF_AE4470Z-FZ3CTélécharger

Mbsm_dot_pro_private_PDF_compresseur-unite-hermetique-tecumseh-ae4470zTélécharger

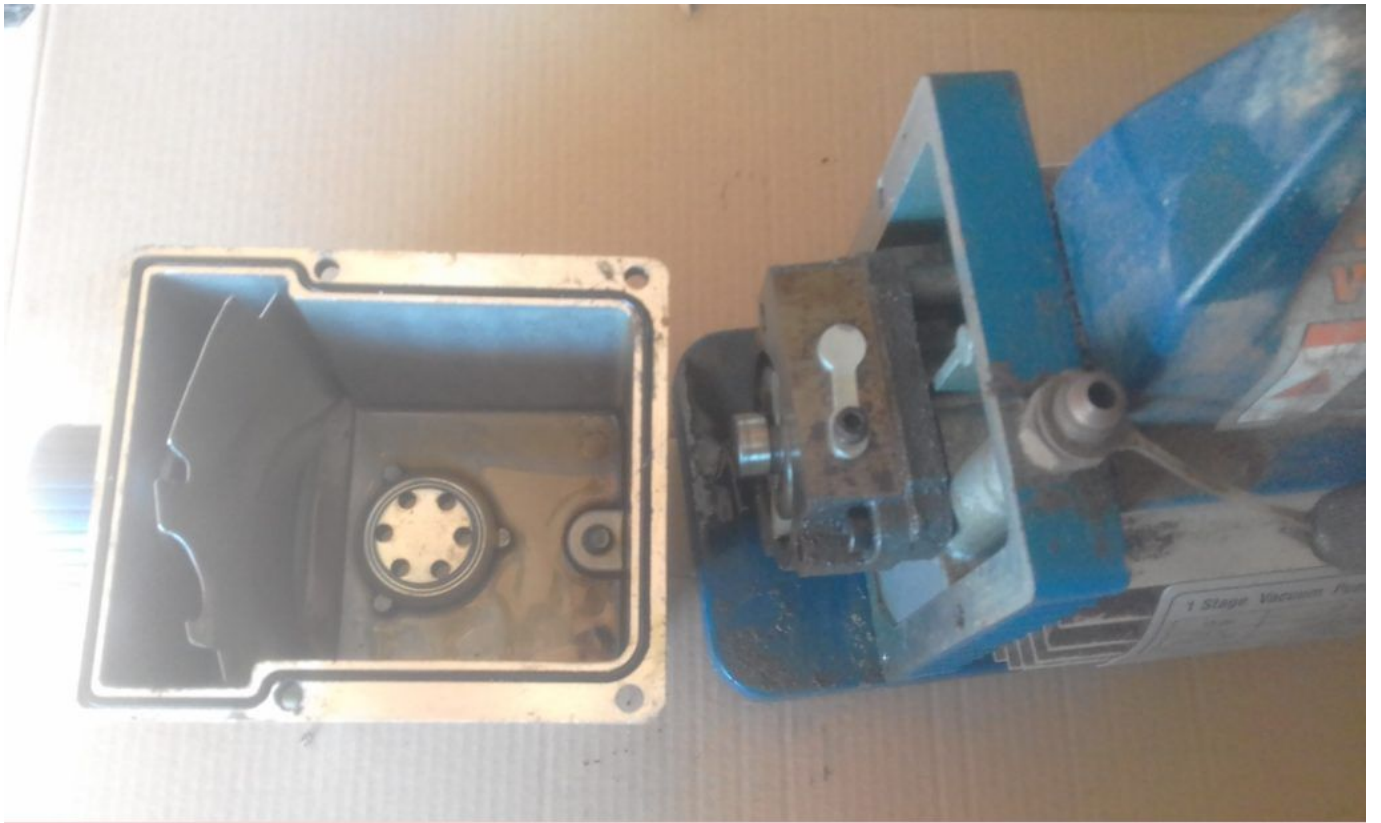
Vacuum Pump, 1/4 Hp , Vane Pump, Rotary Vane, Valve Rotary, POMPE À VIDE, Restoration

Category: Technologie, Tester ok
written by Lilianne | 8 May 2021



Private Picture Copyright : WWW.MBSM.PRO





Private Picture Copyright: WWW.MBSM.PRO



Private Picture Copyright: WWW.MBSM.PRO

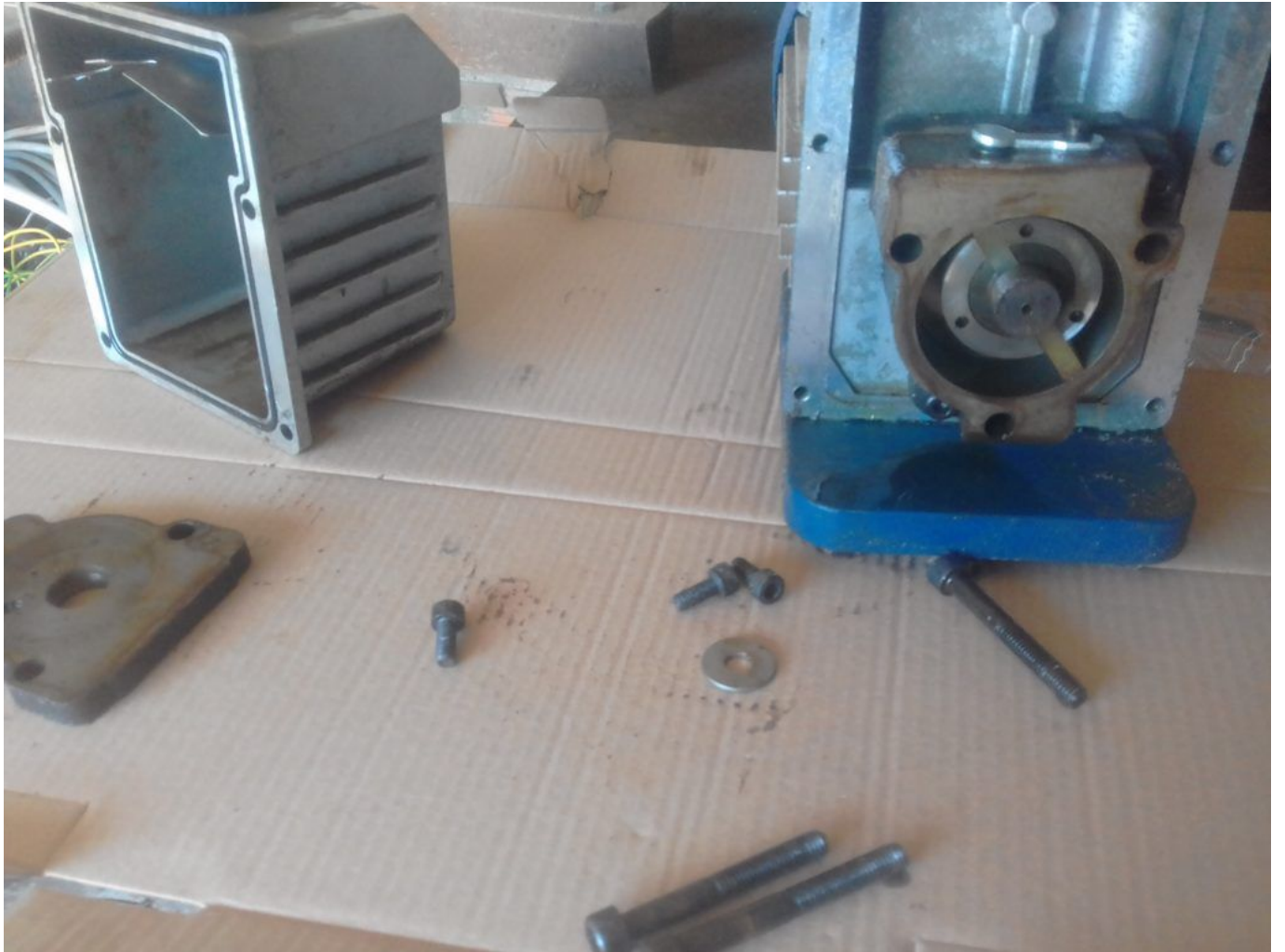


Private Picture Copyright: WWW.MBSM.PRO



Private Picture Copyright: WWW.MBSM.PRO











Private Picture Copyright : WWW.MBSM.PRO





















Private Picture Copyright: WWW.MBSM.PRO





Private Picture Copyright: WWW.MBSM.PRO



Private Picture Copyright : WWW.MBSM.PRO

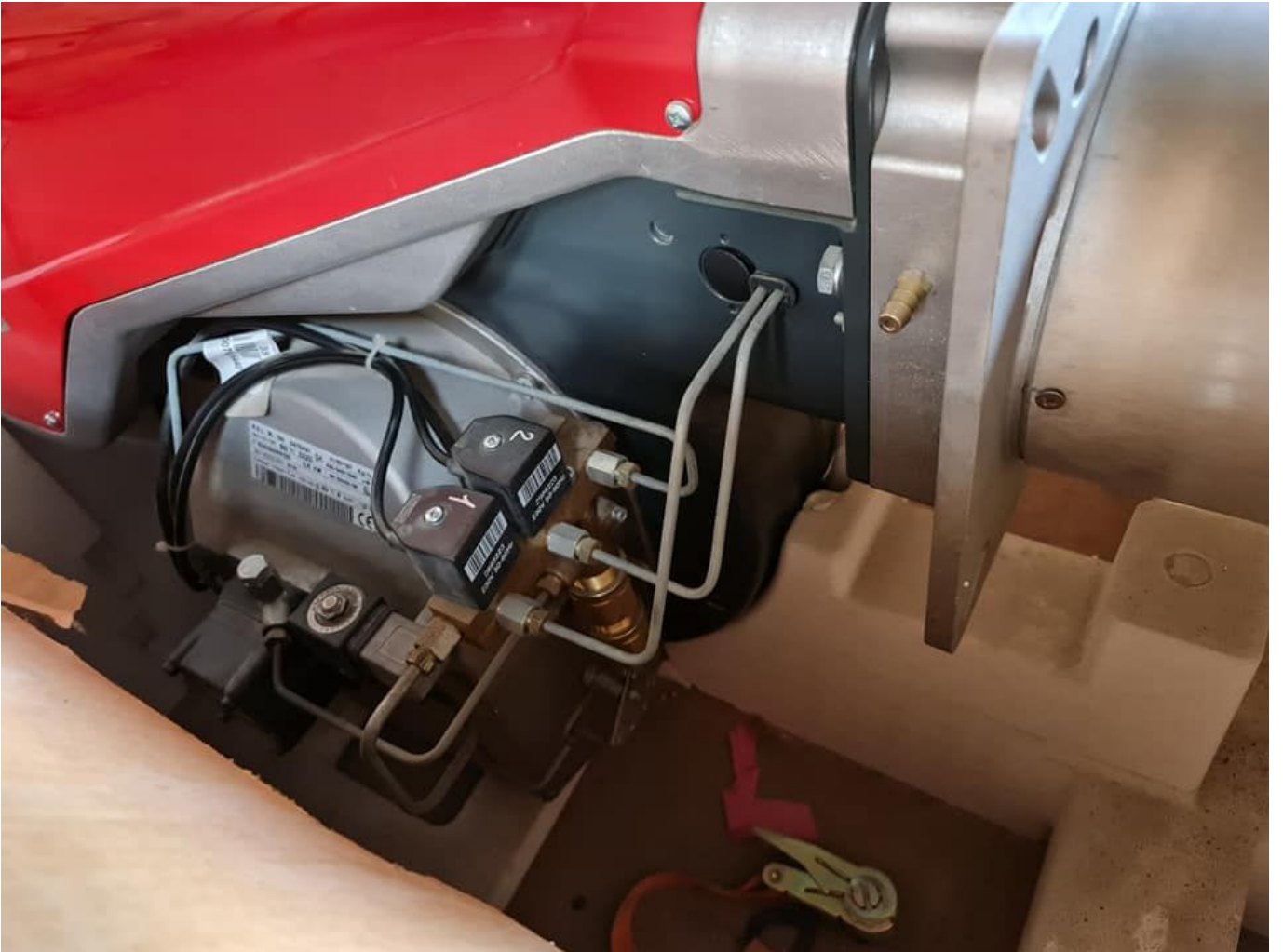
MAZOUT, Brûleur, FIOUL, Combust, RIELLO, RBL, R.B.L, Baltur , POUR CHAURIDIÈRE DE CHAUFFAGE DOMESTIQUE

Category: Plomberie,Technologie

written by Lilianne | 8 May 2021

MAZOUT, Brûleur, FIOUL, Combust, RIELLO, RBL, R.B.L, Baltur , POUR CHAURIDIÈRE DE CHAUFFAGE DOMESTIQUE





696440

| | | | |
|--------------------------|-------------|---|---|
| R.E.L. RL 130 3475431 | |  | 41/80+130 Kg/n |
| TIPO/TYP/TYPE | 662 T1 DZZO | | 486/948+1540 kW |
| N° | 02428000129 | 2,6 kW | BN 5G426/99  |
| 3N~400/230V 50 Hz | | | |
| Combust. / Heizöl / Fuel | | max.visc @ 20 °C | 6 mm ² /s (1,5°E) |



Private Picture Copyright : WWW.MBSM.PRO

| | | | | |
|---|---------------|---------|--|---|
| R.B.L. | RL 190 | 3092152 |  | 64/120+206 Kg/h |
| TPO/TYP/TYPE | 2152D | DZZO | | 759/1423+2443 KV |
| N° | 02478000225 | 5,5 kW | | |
| | 3N ~ 400/230V | 50 Hz | | |
| Combust./Heizöl/Fuel max.visc @ 20°C 6 mm \varnothing (1,5"E) | | | | |
| RELO S.p.A. I-37045 Legnago (VR) | | |  |  |







Private Picture Copyright : WWW.MBSM.PRO



Private Picture Copyright : WWW.MBSM.PRO

baltur

Cento (FE)
s.r.l.

BGN 300P

N. Matr. 2240049 Anno 1995
Serial Nr. 2240049 Year 1995
Combustibile Metano
Fuel Natural gas
Bistadio Basse pressione
Two stage Low pressure
Gas Categoria I
Potenza termica nom 7.5 kW
Rated input 7.5 kW
3N 50 Hz 220-380 V MADE IN ITALY

| | | | | | |
|---|---|---|---|---|---|
| 1 | 2 | 3 | 4 | 5 | 6 |
|---|---|---|---|---|---|

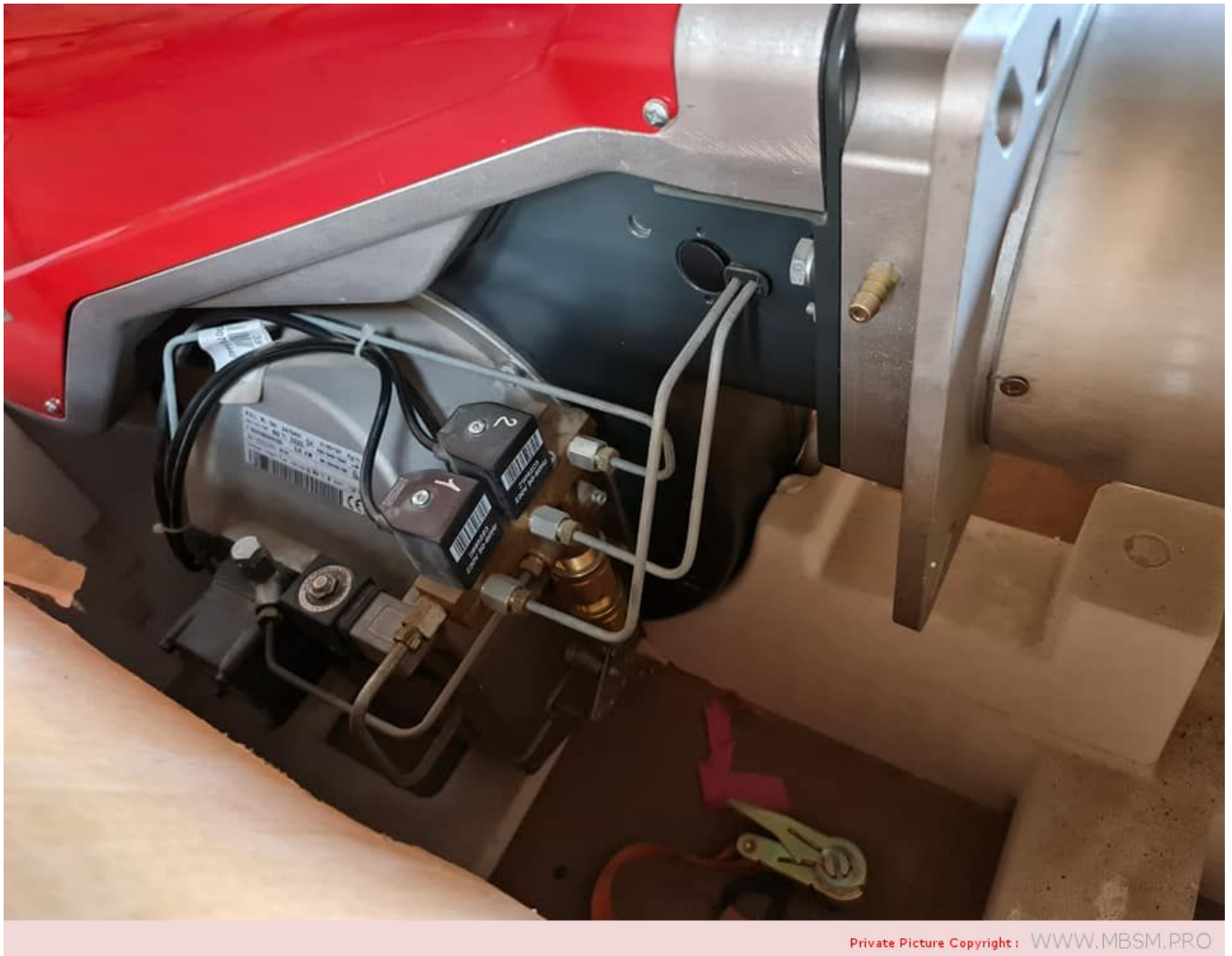
collegato in linea

| | | | | |
|---|------------------|---|--------------------------------|--------|
| N02488000983 | TIPO/TYP TYPE | 2116 0 | 220 V ~ 50/60 Hz | 0.9 kW |
|  | | 80 ÷ 450 Kg/h | 990 ÷ 5200 | kW |
| Combust. Heizöl / Fuel | max. visc. @ | 50°C | 500 mm ² /s (69 °E) | 0224 |
| TI 10 PR 50°2116 | | | | R.B.L. |
| | | <input type="checkbox"/> DUE STADI PROGRESSIVI GLEITEND ZWEISTUFIG | | |
| | | <input type="checkbox"/> MODULANTE MODULIEREND | | |





Private Picture Copyright : WWW.MBSM.PRO



Private Picture Copyright : WWW.MBSM.PRO

ZMC, zanussi, Made in Egypt,
Compressor, Frost Free Freezer,
GM90AZ, EGM90AZ, 155W, 1/5Hp, 134A,
150G, Electrostar Freezer, 260L
CRoss, 235L Storage , 220v-50H, 1.2A,
Class T

Category: compressor

written by Lilianne | 8 May 2021

COMPRESSOR TECHNICAL DATA

General Data

| | |
|---------------------------------------|----------------|
| Refrigerant: | R134a |
| Application: | LBP |
| Evaporating Temperature Range: | -30°C to -10°C |
| Voltage/Frequency: | 220/240V/50 HZ |

Compressor Cooling: Static
Expansion Device: Capillary Tube
Packaging Quantity: Multi – 96:120 pcs
Approvals: CE-VDE-GOST

Mechanical Data

Oil Charge: 300 cm³
Oil Type Configuration: ester
Oil Type Viscosity: 19 cSt
Weight: 10 kg

Electrical Data

Motor Type: RSIR / RSCR*
Voltage working range at 50 Hz: 187-264V
Maximum Motor Temperature: 130°C
Locked Rotor Current: 14.46 / 9.86 A
Start Winding Resistance: 23.40Ω at 25°C
Run Winding Resistance: 8.08 Ω at 25°C
Phase: 1 ph

External Characteristics

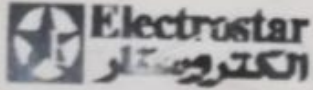
Internal Diameter (mm)
Suction Connector 6.5
Discharge Connector 4.9
Process Connector 6.5
Material Copper

Electrical Components

Starting Device: PTC 14Ω
Motor Protection: T0490/xx

ZMC **GM90AZ** 1137
R 134 a 220-240V-50Hz
MADE IN EGYPT
PGF 474
0002263

OO HUAWEI NOVA 5T
OO AI QUAD CAMERA



Made In Egypt

Frost Free Freezer

Model **ES 260 NF** طراز

Voltage **220 V - 50 HZ** **1.2A** **155 W**

Freezing Capacity 22 Kg/24Hr Freezer Stopage Volume 235 Lit.

Total Gross Volume 260 Lit Refrig. Storage Volume



024287

R134a **150g** وزن وسيط

التبريد

Class T صنع في مصر

| | | |
|-------------------|-----------------------------------|------|
| max. lamp input | Without | 15 W |
| Protection Rating | IPX 4 | |
| According To | ES 6000 / 2008 - ISO 15502 / 2005 | |

OO HUAWEI NOVO 5T
OO AI QUAD CAMERA

Private Picture Copyright : WWW.MBSM.PRO