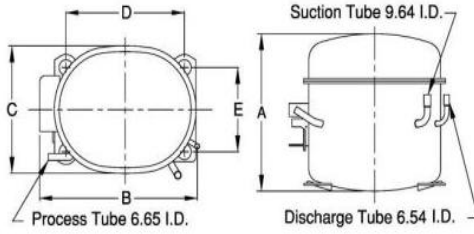




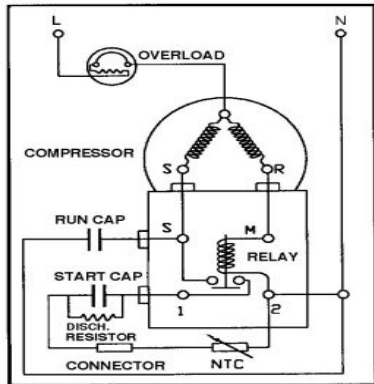
UNCONTROLLED COPY

**PRINCIPAL DIMENSIONS - mm**



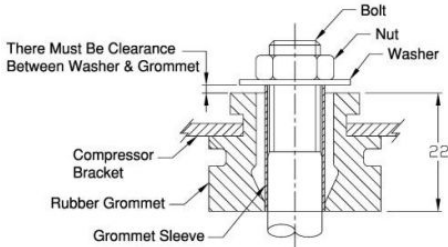
A: 216	B: 216	C: 155	D: 165	E: 102
--------	--------	--------	--------	--------

**SCHEMATIC WIRING DIAGRAM C.S.R.**



**SCHEMATIC WIRING DIAGRAM -**

**MOUNTING KIT**



Electrical : 115 V/60 Hz. 1 Phase

**Nominal Performance**

Capacity	986 / - Watts
	3,364 / - BTU/Hr
	848 / - Kcal/Hr
Power Input	663 / - Watts
Locked Rotor Amps	40.00 / - Amps
Max Continuous Current	- / - Amps
Rated Load Amps	5.90 / - Amps
COP	1.49 / - Watts / Watts
EER	5.07 / - BTU/W-Hr

**Testing Conditions**

Condensing Temperature	54.40 °C	129.9 °F
Evaporating Temperature	-6.70 / - °C	19.9 / - °F
Liquid Temperature	46.10 °C	115.0 °F
Return Gas Temperature	35.00 °C	95.0 °F
Ambient Temperature	35.00 °C	95.0 °F

**Application**

Evaporating Temp. Range	CBP	@ -23.30 ° C to 12.70 ° C
		(-9.9° F to 54.9° F)
	Heat Pump	- ° C to - ° C
		(-° F to -° F)
Refrigerant	R134a	
Refrigerant Flow Control	Capillary Tube	
Compressor Cooling	Fan (460 CFM)	

**Compressor and Motor data**

Compressor Type	Reciprocating
Displacement	18.00 cc.
Oil Type	Polyolester Oil
Oil Charge	457 cc.
Motor Type	C.S.R. ; 2 Pole 3,500 / - r/m
Voltage Range	104-126/- Volts 60/- Hz.
Winding Resistance at 25 ° C	
Start	6.02 Ohms
Run	0.82 Ohms
Weight with Oil	12.19 Kg.
Weight with Oil and Accessories	13.04 Kg.

**Electrical Components**

**Motor Protector**

Type	External Overload 3/4"
Model Number	KME664-30/C
Open / Close	140-150 / 70-52 ° C
1st Cycle trip at 25 ° C	28.50 Amps(main) - Amps(start)

**Motor Starter**

Type	Current Relay
Model Number	KME682-17NT
Pick Up (max.)	22.80 Amps
Drop Out (min.)	20.00 Amps
Terminal Cover	KMD 901-12
Start Capacitor	130-156 µF 330 VAC.
Disch Resistor for Start Cap	15000 Ohms 2 W
Run Capacitor	25 µF 440 VAC.

**Mounting Kit**

Rubber Grommet	4007KMD905-3
Sleeve Grommet	3KMD903-2-Z
Washer	4023KEB387

Since we are constantly improving our product , the specification are subject to change without notice.

REV. DATE	C / N No.
11-03-16	0077/16

**Certificate Marks**



**RoHS**

